

TABLE 1
FIELD DATA SUMMARY TABLE
NOBLE 100322
BALL RANCH AC 15-65HN TANK BATTERY, WELD COUNTY, COLORADO
REM # 23764

Sample ID	Sample Date	Depth (ft)	GPS Data		PDOP Value	VOC Concentration (ppm)
			Latitude	Longitude		
MET01@6"	9/21/2022	0.5	40.577625	-104.430408	NA	1.8 ppm
MET02@6"	9/21/2022	0.5	40.577628	-104.430385	NA	1.5 ppm
ECD01@6"	9/21/2022	0.5	40.577506	-104.430315	NA	1.9 ppm
ECD02@6"	9/21/2022	0.5	40.577507	-104.430268	NA	1.4 ppm
SEP01@3'	9/21/2022	3	40.577602	-104.430365	NA	19.9 ppm
SEP02@3'	9/21/2022	3	40.577600	-104.430325	NA	0.9 ppm
AST01@1.5'	9/21/2022	1.5	40.577959	-104.430325	NA	0.3 ppm
AST02@1'	9/21/2022	1	40.577910	-104.430324	NA	0.2 ppm
AST03@1.5'	9/21/2022	1.5	40.577870	-104.430322	NA	0.3 ppm
AST04@1'	9/21/2022	1	40.577828	-104.430322	NA	0.1 ppm
AST05@1'	9/21/2022	1	40.577788	-104.430326	NA	0.3 ppm
PWVB01@8'	9/21/2022	8	40.577753	-104.430332	NA	27.1 ppm
PWVS01@6'	9/21/2022	6	40.577735	-104.430330	NA	2.2 ppm
PWVW01@6'	9/21/2022	6	40.577753	-104.430354	NA	7.7 ppm
PWVN01@6'	9/21/2022	6	40.577769	-104.430322	NA	12.6 ppm
PWVE01@6'	9/21/2022	6	40.577753	-104.430308	NA	25.2 ppm
SS-CEN 8FT	05/19/2023	8	40.577777	-104.430341	-	Refer to Bore Logs
SS-E 9FT	05/19/2023	9	40.577775	-104.430302	-	Refer to Bore Logs
SS-N 9FT	05/19/2023	9	40.577800	-104.430337	-	Refer to Bore Logs
SS-W 9FT	05/19/2023	9	40.577777	-104.430374	-	Refer to Bore Logs
N Wall 8 Ft	10/4/2024	8	40.5778041	-104.4303611	0.90	0.0
E Wall 8 Ft	10/4/2024	8	40.5777721	-104.4303165	0.90	0.0
S Wall 8 Ft	10/4/2024	8	40.5777393	-104.4303614	0.80	0.0

Sample ID	Sample Date	Depth (ft)	GPS Data		PDOP Value	VOC Concentration (ppm)
			Latitude	Longitude		
W Wall 8 Ft	10/4/2024	8	40.5777718	-104.4304050	0.80	0.0
Floor 9 Ft	10/4/2024	9	40.5777701	-104.4303603	-	0.0
BKG 1 8FT	05/19/2023	8	40.5773491	-104.4301269	-	Refer to Bore Logs
BKG 2 9FT	05/19/2023	9	40.5771648	-104.4304850	-	Refer to Bore Logs
BKG 3 9FT	05/19/2023	9	40.5774428	-104.4306647	-	Refer to Bore Logs
BKG 4 8FT	05/19/2023	8	40.5780622	-104.4306687	-	Refer to Bore Logs
BKG 5 9FT	05/19/2023	9	40.5782812	-104.4302959	-	Refer to Bore Logs

1. Global Positioning System (GPS) data is provided in decimal degrees using North American Datum (NAD) 83 UTMZone 13 North.

2. Volatile organic compound (VOC) concentrations are measured in the field using a photoionization detector (PID).

PDOP = Position Dilution of Precision

ppm = Parts per million

in. = Inches

ft. = Feet

bgs = Below ground surface


 = Material excavated and transported off site for disposal.

TABLE 2
SUMMARY OF VOLATILE ORGANIC SOIL CHEMISTRY DATA
NOBLE 100322
BALL RANCH AC 15-65HN TANK BATTERY, WELD COUNTY, COLORADO
REM # 23764

Sample ID	Sample Date	Depth (ft)	Benzene (mg/kg)	Toluene (mg/kg)	Ethyl-Benzene (mg/kg)	Xylenes (mg/kg)	1,2,4-Trimethyl-Benzene (mg/kg)	1,3,5-Trimethyl-Benzene (mg/kg)	Naphthalene (mg/kg)	TPH (mg/kg)	TPH GRO (mg/kg)	TPH DRO (mg/kg)	TPH ORO (mg/kg)
ECMC Table 915-1 Limits (Residential SSL)			1.2	490	5.8	58	30	27	2	500	500**		
ECMC Table 915-1 Limits (Protection of Groundwater SSL)			0.0026	0.69	0.78	9.9	0.0081	0.0087	0.0038	500	500**		
AST01@1.5'	09/21/2022	1.5	<0.0020	<0.0050	<0.0050	<0.010	<0.0050	<0.0050	<0.0038	<500	<0.50	<50	<50
AST02@1'	09/21/2022	1	<0.0020	<0.0050	<0.0050	<0.010	<0.0050	<0.0050	<0.0038	<500	<0.50	<50	<50
AST03@1.5'	09/21/2022	1.5	<0.0020	<0.0050	<0.0050	<0.010	<0.0050	<0.0050	<0.0038	<500	<0.50	<50	<50
AST04@1'	09/21/2022	1	<0.0020	<0.0050	<0.0050	<0.010	<0.0050	<0.0050	<0.0038	<500	<0.50	<50	<50
AST05@1'	09/21/2022	1	<0.0020	<0.0050	<0.0050	<0.010	<0.0050	<0.0050	<0.0038	<500	<0.50	<50	<50
PWVB01@8'	09/21/2022	8	<0.0020	<0.0050	<0.0050	<0.010	0.012	<0.0050	0.0082	<500	<0.50	<50	<50
PWVE01@6'	09/21/2022	6	<0.0020	0.0078	0.0061	0.028	0.0075	<0.0050	<0.0038	<500	<0.50	<50	<50
SEP01@3'	09/21/2022	3	<0.0020	<0.0050	<0.0050	<0.010	<0.0050	<0.0050	<0.0038	<500	<0.50	<50	<50
SEP02@3'	09/21/2022	3	<0.0020	<0.0050	<0.0050	<0.010	<0.0050	<0.0050	<0.0038	<500	<0.50	<50	<50
SS-CEN 8FT	05/19/2023	8	<0.0020	<0.0050	<0.0050	<0.010	<0.0050	0.006	<0.0038	<500	<0.50	<50	<50
SS-E 9FT	05/19/2023	9	<0.0020	<0.0050	<0.0050	<0.010	<0.0050	<0.0050	<0.0038	<500	<0.50	<50	<50
SS-N 9FT	05/19/2023	9	<0.0020	<0.0050	<0.0050	<0.010	<0.0050	<0.0050	<0.0038	<500	<0.50	<50	<50
SS-W 9FT	05/19/2023	9	<0.0020	<0.0050	<0.0050	<0.010	<0.0050	<0.0050	<0.0038	<500	<0.50	<50	<50
E Wall 8ft	10/04/2024	8	<0.0020	<0.0050	<0.0050	<0.010	<0.0050	<0.0050	<0.0038	<500	<0.50	<50	<50
Floor 9ft	10/04/2024	9	<0.0020	<0.0050	<0.0050	<0.010	<0.0050	<0.0050	<0.0038	<500	<0.50	<50	<50
N Wall 8ft	10/04/2024	8	<0.0020	<0.0050	<0.0050	<0.010	<0.0050	<0.0050	<0.0038	<500	<0.50	<50	<50
S Wall 8ft	10/04/2024	8	<0.0020	<0.0050	<0.0050	<0.010	<0.0050	<0.0050	<0.0038	<500	<0.50	<50	<50
W Wall 8ft	10/04/2024	8	<0.0020	<0.0050	<0.0050	<0.010	<0.0050	<0.0050	<0.0038	<500	<0.50	<50	<50

1. Bold values exceed the ECMC Table 915-1 limit(s)
 2. Red & blue highlighted soil analytical values indicate an exceedance of the referenced soil screening level (SSL)
 3. * Indicates laboratory minimum detection limit in excess of SSL
 4. ** Summation of GRO+DRO+ORO must be less than 500 mg/kg
- NA - Not analyzed

= Material excavated and transported off site for disposal.

TABLE 3
SUMMARY OF POLYCYCLIC AROMATIC HYDROCARBON SOIL CHEMISTRY DATA
NOBLE 100322
BALL RANCH AC 15-65HN TANK BATTERY, WELD COUNTY, COLORADO
REM # 23764

Sample ID	Sample Date	Depth (ft)	Acenaphthene (mg/kg)	Anthracene (mg/kg)	Benzo (a) Anthracene (mg/kg)	Benzo (a) Pyrene (mg/kg)	Benzo (b) Fluoranthene (mg/kg)	Benzo (k) Fluoranthene (mg/kg)	Chrysene (mg/kg)	Dibenzo (a,h) Anthracene (mg/kg)	Fluoranthene (mg/kg)	Fluorene (mg/kg)	Indeno (1,2,3-cd) Pyrene (mg/kg)	Pyrene (mg/kg)	1-Methyl - Naphthalene (mg/kg)	2-Methyl- Naphthalene (mg/kg)
ECMC Table 915-1 Limits (Residential SSL)			360	1800	1.1	0.11	1.1	11	110	0.11	240	240	1.1	180	18	24
ECMC Table 915-1 Limits (Protection of Groundwater SSL)			0.55	5.8	0.011	0.24	0.3	2.9	9	0.096	8.9	0.54	0.98	1.3	0.006	0.019
AST01@1.5'	09/21/2022	1.5 Ft	<0.00500	<0.00500	<0.00500	<0.00500	<0.00500	<0.00500	<0.00500	<0.00500	<0.00500	<0.00500	<0.00500	<0.00500	<0.00500	<0.00500
AST02@1'	09/21/2022	1.0 Ft	<0.00500	<0.00500	<0.00500	<0.00500	<0.00500	<0.00500	<0.00500	<0.00500	<0.00500	<0.00500	<0.00500	<0.00500	<0.00500	<0.00500
AST03@1.5'	09/21/2022	1.5 Ft	<0.00500	<0.00500	<0.00500	<0.00500	<0.00500	<0.00500	<0.00500	<0.00500	<0.00500	<0.00500	<0.00500	<0.00500	<0.00500	<0.00500
AST04@1'	09/21/2022	1.0 Ft	<0.00500	<0.00500	<0.00500	<0.00500	<0.00500	<0.00500	<0.00500	<0.00500	<0.00500	<0.00500	<0.00500	<0.00500	<0.00500	<0.00500
AST05@1'	09/21/2022	1.5	<0.00500	<0.00500	<0.00500	<0.00500	<0.00500	<0.00500	<0.00500	<0.00500	<0.00500	<0.00500	<0.00500	<0.00500	<0.00500	<0.00500
PWVB01@8'	09/21/2022	1	<0.00500	<0.00500	<0.00500	<0.00500	<0.00500	<0.00500	<0.00500	<0.00500	<0.00500	<0.00500	<0.00500	<0.00500	0.0168	<0.00500
PWVE01@6'	09/21/2022	1.5	<0.00500	<0.00500	<0.00500	<0.00500	<0.00500	<0.00500	<0.00500	<0.00500	<0.00500	<0.00500	<0.00500	<0.00500	<0.00500	<0.00500
SEP01@3'	09/21/2022	1	<0.00500	<0.00500	<0.00500	<0.00500	<0.00500	<0.00500	<0.00500	<0.00500	<0.00500	<0.00500	<0.00500	<0.00500	<0.00500	<0.00500
SEP02@3'	09/21/2022	1	<0.00500	<0.00500	<0.00500	<0.00500	<0.00500	<0.00500	<0.00500	<0.00500	<0.00500	<0.00500	<0.00500	<0.00500	<0.00500	<0.00500
SS-CEN 8FT	05/19/2023	8	<0.00500	<0.00500	0.0219	<0.00500	<0.00500	<0.00500	0.0222	<0.00500	<0.00500	<0.00500	<0.00500	0.0400	0.24	<0.00500
SS-E 9FT	05/19/2023	6	<0.00500	<0.00500	<0.00500	<0.00500	<0.00500	<0.00500	<0.00500	<0.00500	<0.00500	<0.00500	<0.00500	<0.00500	<0.00500	<0.00500
SS-N 9FT	05/19/2023	3	<0.00500	<0.00500	<0.00500	<0.00500	<0.00500	<0.00500	<0.00500	<0.00500	<0.00500	<0.00500	<0.00500	<0.00500	<0.00500	<0.00500
SS-W 9FT	05/19/2023	3	<0.00500	<0.00500	<0.00500	<0.00500	<0.00500	<0.00500	<0.00500	<0.00500	<0.00500	<0.00500	<0.00500	<0.00500	<0.00500	<0.00500
E Wall 8ft	10/04/2024	8	<0.00500	<0.00500	<0.00500	<0.00500	<0.00500	<0.00500	<0.00500	<0.00500	<0.00500	<0.00500	<0.00500	<0.00500	<0.00500	<0.00500
Floor 9ft	10/04/2024	9	<0.00500	<0.00500	<0.00500	<0.00500	<0.00500	<0.00500	<0.00500	<0.00500	<0.00500	<0.00500	<0.00500	<0.00500	<0.00500	<0.00500
N Wall 8ft	10/04/2024	9	<0.00500	<0.00500	<0.00500	<0.00500	<0.00500	<0.00500	<0.00500	<0.00500	<0.00500	<0.00500	<0.00500	<0.00500	<0.00500	<0.00500
S Wall 8ft	10/04/2024	9	<0.00500	<0.00500	<0.00500	<0.00500	<0.00500	<0.00500	<0.00500	<0.00500	<0.00500	<0.00500	<0.00500	<0.00500	<0.00500	<0.00500
W Wall 8ft	10/04/2024	8	<0.00500	<0.00500	<0.00500	<0.00500	<0.00500	<0.00500	<0.00500	<0.00500	<0.00500	<0.00500	<0.00500	<0.00500	<0.00500	<0.00500

1. Bold values exceed the ECMC Table 915-1 limit(s)

2. Red & blue highlighted soil analytical values indicate an exceedance of the referenced soil screening level (SSL)

3. * Indicates laboratory minimum detection limit in excess of SSL

NA - Not analyzed

= Material excavated and transported off site for disposal.

TABLE 4
SUMMARY OF SOIL SUITABILITY FOR RECLAMATION
NOBLE 100322
BALL RANCH AC 15-65HN TANK BATTERY, WELD COUNTY, COLORADO
REM # 23764

Sample ID	Sample Date	Depth (ft)	pH (Standard Units)	EC (mmhos/cm)	SAR (Standard Units)	Boron (mg/L)
ECMC Table 915-1 Soil Suitability Limits			6 - 8.3	<4	<6	2
AST01@1.5'	09/21/2022	1.5	6.66	2.39	0.478	0.0615
AST02@1'	09/21/2022	1	6.78	3.06	0.452	0.0782
AST03@1.5'	09/21/2022	1.5	6.72	0.995	0.378	0.0379
AST04@1'	09/21/2022	1	6.30	1.74	0.359	0.0987
AST05@1'	09/21/2022	1	7.33	4.07	0.499	0.140
PWVB01@8'	09/21/2022	8	7.97	0.834	1.50	0.198
PWVE01@6'	09/21/2022	6	7.94	0.308	2.19	0.308
SEP01@3'	09/21/2022	3	7.92	0.297	0.823	0.173
SEP02@3'	09/21/2022	3	7.72	0.992	1.13	0.205
SS-CEN 8FT	05/19/2023	8	7.30	0.593	1.33	0.654
E Wall 8ft	10/04/2024	8	9.14	0.566	0.411	<2.00
N Wall 8ft	10/04/2024	8	8.69	0.51	2.11	<2.00
S Wall 8ft	10/04/2024	8	8.65	0.151	1.93	<2.00
W Wall 8ft	10/04/2024	8	8.59	0.484	2.05	<2.00
Floor 9ft	10/04/2024	9	7.71	0.238	2.25	<2.00
SS-E 9FT	05/19/2023	9	6.91	0.361	0.738	1.06
SS-N 9FT	05/19/2023	9	6.92	0.728	3.53	1.25
SS-W 9FT	05/19/2023	9	6.96	1.06	3.36	0.697
BKG 1 8FT	05/19/2023	8	7.14	0.260	0.473	0.730
BKG 4 8FT	05/19/2023	8	7.22	2.05	2.26	1.41
BKG 2 9FT	05/19/2023	9	6.93	0.219	0.812	1.19
BKG 3 9FT	05/19/2023	9	6.78	2.46	1.92	0.691

Sample ID	Sample Date	Depth (ft)	pH (Standard Units)	EC (mmhos/cm)	SAR (Standard Units)	Boron (mg/L)
ECMC Table 915-1 Soil Suitability Limits			6 - 8.3	<4	<6	2
BKG 5 9FT	05/19/2023	9	7.41	3.30	2.24	0.837
Maximum Background Concentration			7.41	3.30	2.26	1.41

1. Bold faced values exceed the ECMC Table 915-1 limit(s)

2. Blue highlighted soil analytical values indicate a regulatory exceedance

NA - Not analyzed

= Material excavated and transported off site for disposal.

TABLE 5
SUMMARY OF METALS IN SOIL CHEMISTRY DATA
NOBLE 100322
BALL RANCH AC 15-65HN TANK BATTERY, WELD COUNTY, COLORADO
REM # 23764

Sample ID	Sample Date	Depth (ft)	Arsenic (mg/kg)	Barium (mg/kg)	Cadmium (mg/kg)	Chromium (VI) (mg/kg)	Copper (mg/kg)	Lead (mg/kg)	Nickel (mg/kg)	Selenium (mg/kg)	Silver (mg/kg)	Zinc (mg/kg)
ECMC Table 915-1 Limits (Residential SSL)			0.68	15000	71	0.3	3100	400	1500	390	390	23000
ECMC Table 915-1 Limits (Protection of Groundwater SSL)			0.29	82	0.38	0.00067	46	14	26	0.26	0.8	370
SS-E 9FT	05/19/2023	9	2.52	9.29	<0.245	<0.30	4.65	2.93	1.07	0.436	0.0383	7.29
SS-N 9FT	05/19/2023	9	0.875	6.39	<0.249	<0.30	4.01	2.30	3.89	<0.324	<0.0249	16.2
SS-W 9FT	05/19/2023	9	1.72	62.8	<0.248	<0.30	4.51	239	1.00	1.64	0.0550	6.70
Floor 9ft	10/04/2024	9	3.32	99.9	<0.200	<0.30	9.59	8.38	2.17	0.267	0.0454	13.5
SS-CEN 8FT	05/19/2023	8	0.804	70.3	<0.242	<0.30	2.14	4.81	1.70	<0.314	<0.0242	8.11
E Wall 8ft	10/04/2024	8	3.88	195	0.23	<0.30	8.4	7.79	7.94	<0.260	0.0344	51.6
N Wall 8ft	10/04/2024	8	16.1	45.1	0.478	<0.30	15.9	13	27.9	0.841	0.047	239
S Wall 8ft	10/04/2024	8	4.73	65.3	0.216	<0.30	11.1	8.6	7.83	0.269	0.0445	71.6
W Wall 8ft	10/04/2024	8	5.98	24.7	0.239	<0.30	10.4	8.97	10.8	0.646	0.0393	92
BKG 1 8FT	05/19/2023	8	1.09	111	<0.246	<0.30	3.63	8.38	3.98	0.333	0.0399	25.0
BKG 4 8FT	05/19/2023	8	2.90	24.3	<0.253	<0.30	2.74	6.44	1.60	1.18	0.0380	14.9
BKG 2 9FT	05/19/2023	9	1.00	33.8	<0.257	<0.30	4.36	13.9	0.796	0.496	0.0458	6.85
BKG 3 9FT	05/19/2023	9	0.596	18.2	<0.246	<0.30	4.64	3.34	0.815	<0.320	0.0477	5.24
BKG 5 9FT	05/19/2023	9	2.25	11.1	<0.245	<0.30	4.11	6.46	1.31	0.514	0.0455	9.93
125% Maximum Background Concentration			3.63	139	<0.380	<0.30	4.64	13.9	3.98	1.48	0.0477	25.0

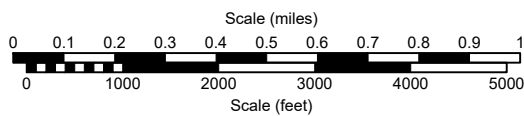
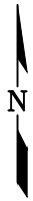
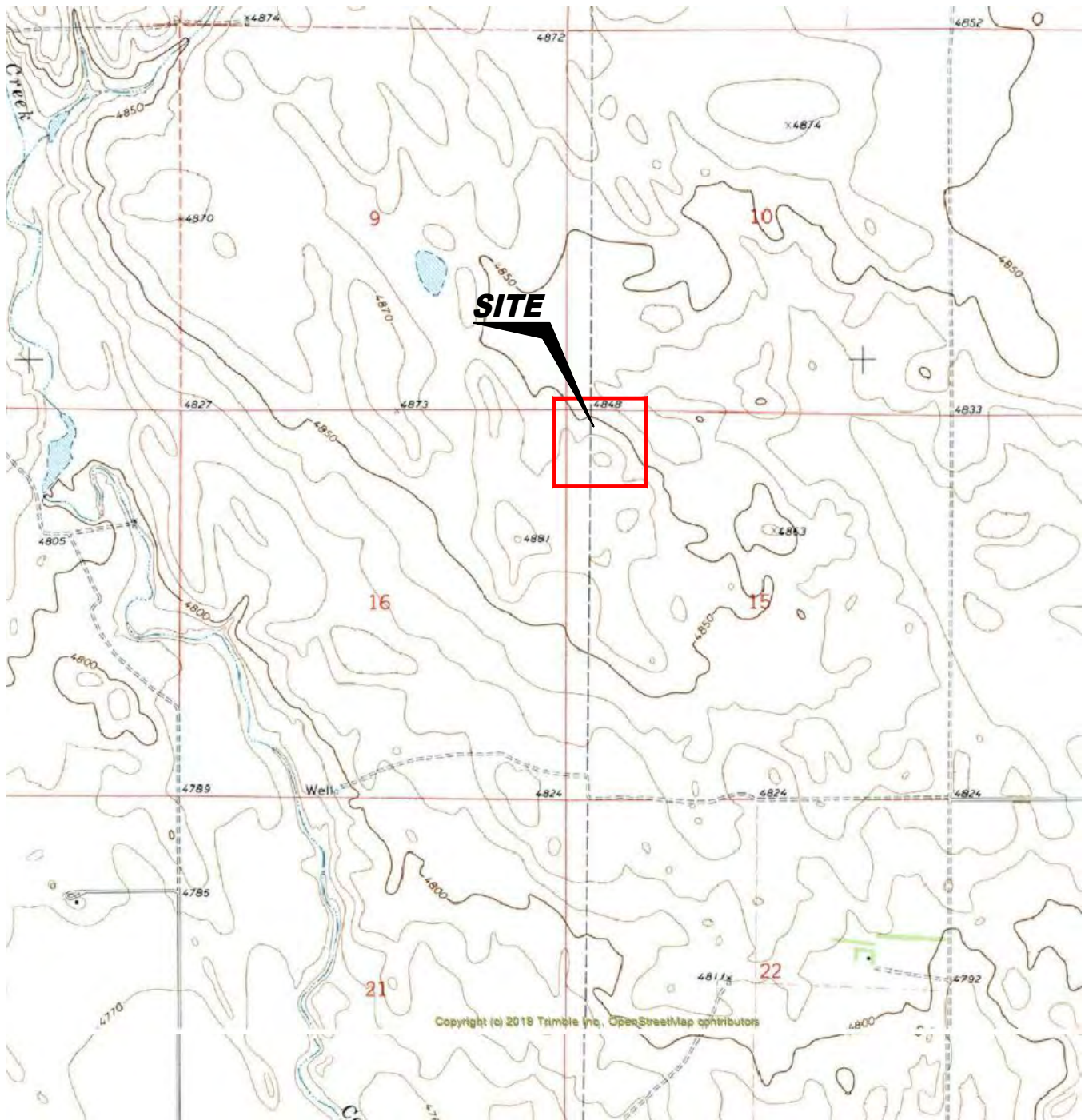
1. Bold values exceed the ECMC Table 915-1 limit(s)

2. Red & blue highlighted soil analytical values indicate an exceedance of the referenced soil screening level (SSL)

* Indicates laboratory minimum detection limit in excess of SSL

NA - Not analyzed

= Material excavated and transported off site for disposal.



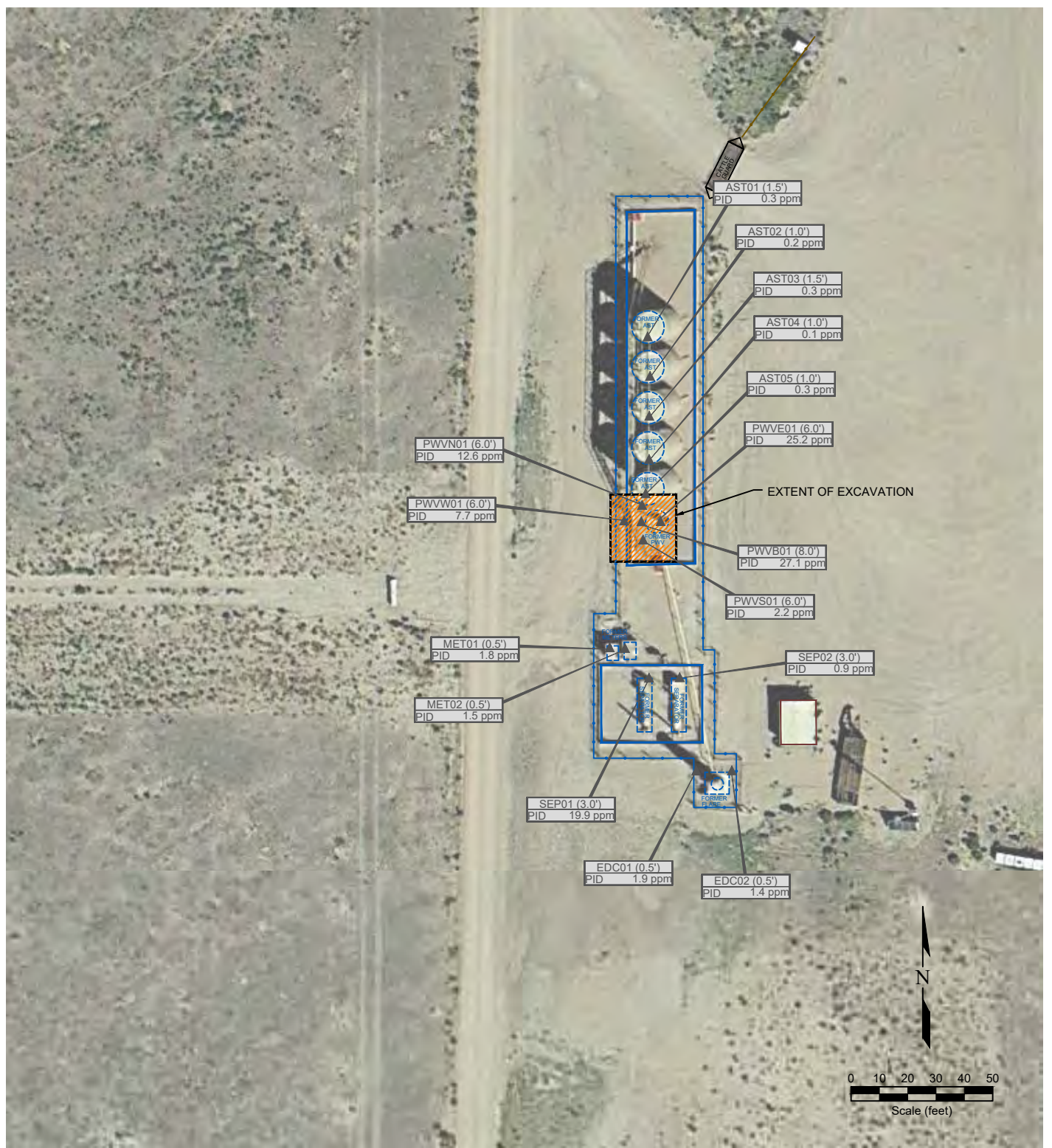
USGS 7.5 MINUTE SERIES (TOPOGRAPHIC)

Figure 1
SITE LOCATION MAP

Noble Energy, Inc. ~ Ball Ranch AC 15-03
 NWNW Sec. 15, T7N, R63W, 6th PM
 Weld County, Colorado
 40.577687°, -104.430380°

Project # C022-124	API #	Facility # 427188
Date 12/12/24	Remediation # 23764	Filename 22124T





LEGEND

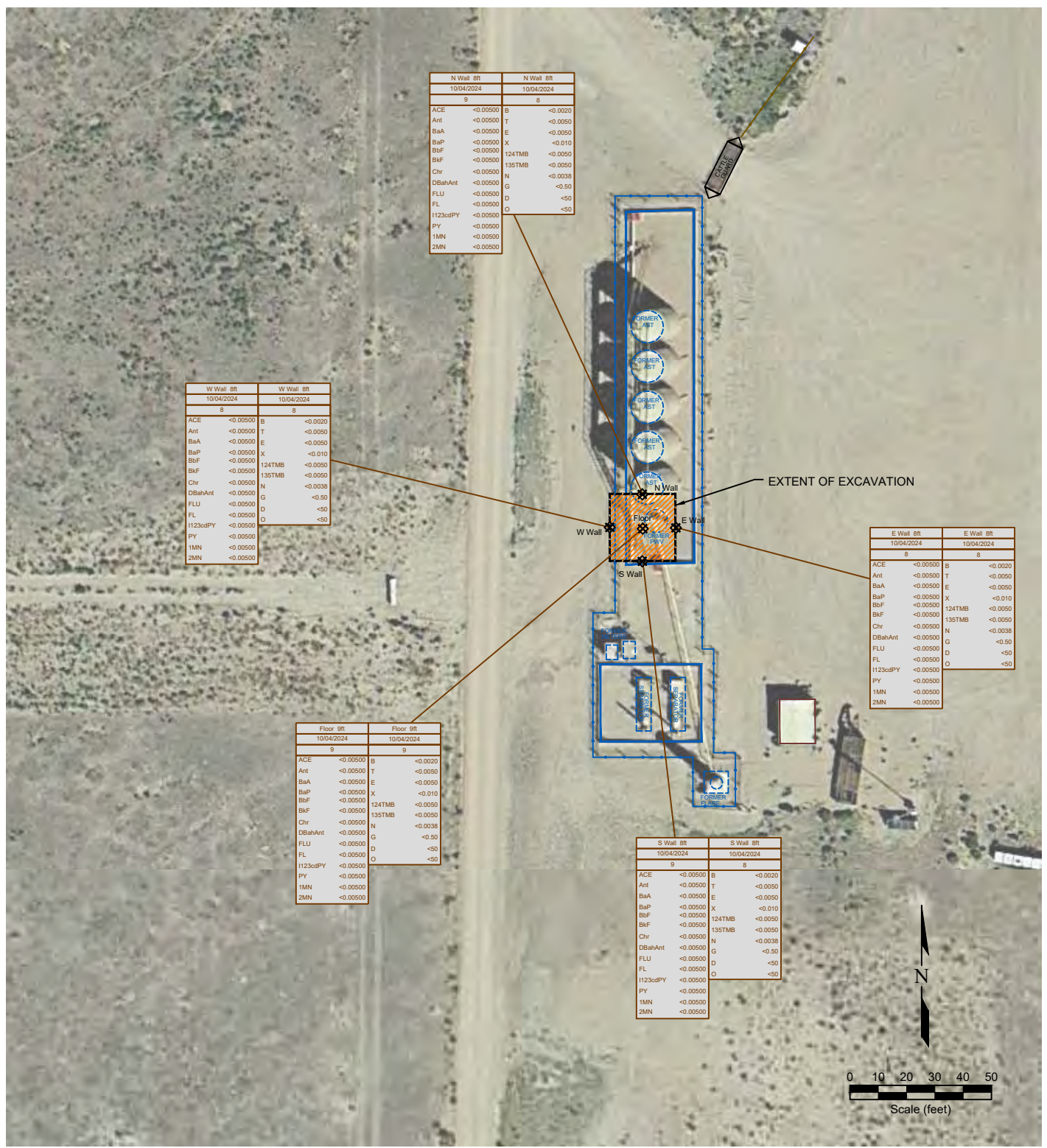
- WELL HEAD LOCATION
- ▲ PID READING LOCATION
- ABOVE GROUND STORAGE TANK
- ▨ AREA OF EXCAVATION
- FORMER FACILITY
- BUILDING
- EXTENT OF EXCAVATION
- FENCE LINE
- CONTAINMENT WALL

**Figure 2
SITE MAP**

Noble Energy, Inc. ~ Ball Ranch AC 15-03
 NWNW Sec. 15, T7N, R63W, 6th PM
 Weld County, Colorado
 40.577687°, -104.430380°

Project No. C022-124	API #	Facility # 427188
Date 12/12/24	Remediation # 23764	Filename 22124Q2





LEGEND

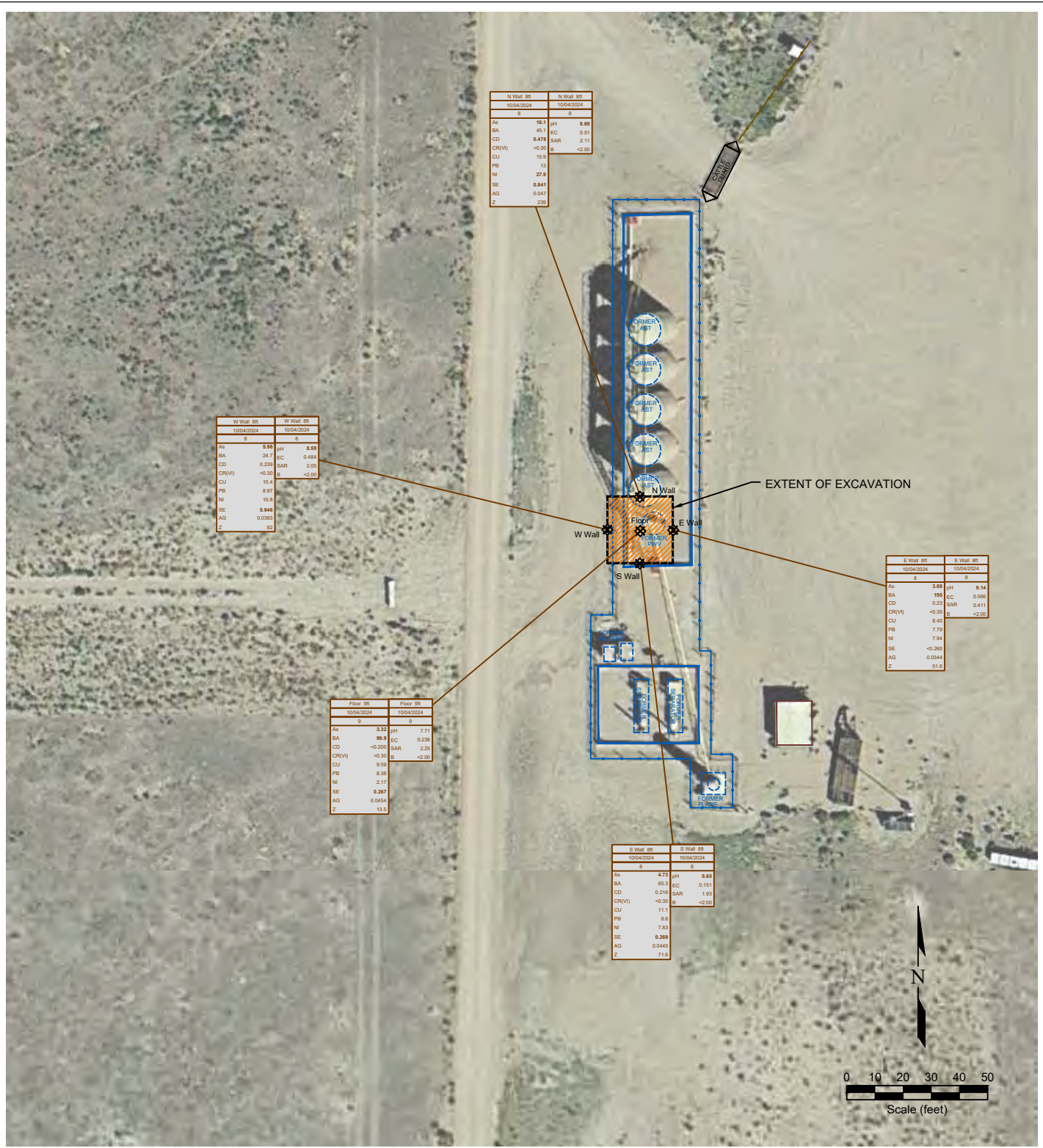
- WELL HEAD LOCATION
- ABOVE GROUND STORAGE TANK
- FORMER FACILITY
- EXTENT OF EXCAVATION
- SOIL SAMPLE LOCATION
- ▨ AREA OF EXCAVATION
- ▭ BUILDING
- FENCE LINE
- CONTAINMENT WALL

SAMPLE ID	SAMPLE ID	SAMPLE ID	SAMPLE ID	
DATE	DATE SAMPLED	DATE	DATE SAMPLED	
DEPTH (ft)	DEPTH (ft)	DEPTH (ft)	DEPTH (ft)	
ACE	<0.0050	ACENAPHTHENE (mg/kg)	B	<0.0020
Ant	<0.0050	ANTHRACENE (mg/kg)	T	<0.0050
BaA	<0.0050	BENZO (A) ANTHRACENE (mg/kg)	E	<0.0050
BaP	<0.0050	BENZO (A) PYRENE (mg/kg)	X	<0.010
BbF	<0.0050	BENZO (B) FLUORANTHENE (mg/kg)	124TMB	<0.0050
BkF	<0.0050	BENZO (K) FLUORANTHENE (mg/kg)	135TMB	<0.0050
Chr	<0.0050	CHRYSENE (mg/kg)	N	<0.0038
DBahAnt	<0.0050	DBENZ (A,H) ANTHRACENE (mg/kg)	G	<0.50
FLU	<0.0050	FLUORANTHENE (mg/kg)	D	<50
FL	<0.0050	FLUORENE (mg/kg)	O	<50
1123cdPY	<0.0050	INDENO (1,2,3-CD) PYRENE (mg/kg)		
PY	<0.0050	PYRENE (mg/kg)		
1MN	<0.0050	1-METHYLNAPHTHALENE (mg/kg)		
2MN	<0.0050	2-METHYLNAPHTHALENE (mg/kg)		

Figure 3
ORGANIC SOIL CHEMISTRY MAP

Noble Energy, Inc. ~ Ball Ranch AC 15-03
 NWNW Sec. 15, T7N, R63W, 6th PM
 Weld County, Colorado
 40.577687°, -104.430380°

Project No. C022-124	API #	Facility # 427188
Date 12/12/24	Remediation # 23764	Filename 22124Q2



LEGEND


- WELL HEAD LOCATION
- ABOVE GROUND STORAGE TANK
- ⊗ SOIL SAMPLE LOCATION
- FORMER FACILITY
- EXTENT OF EXCAVATION
- FENCE LINE
- CONTAINMENT WALL
- AREA OF EXCAVATION
- BUILDING

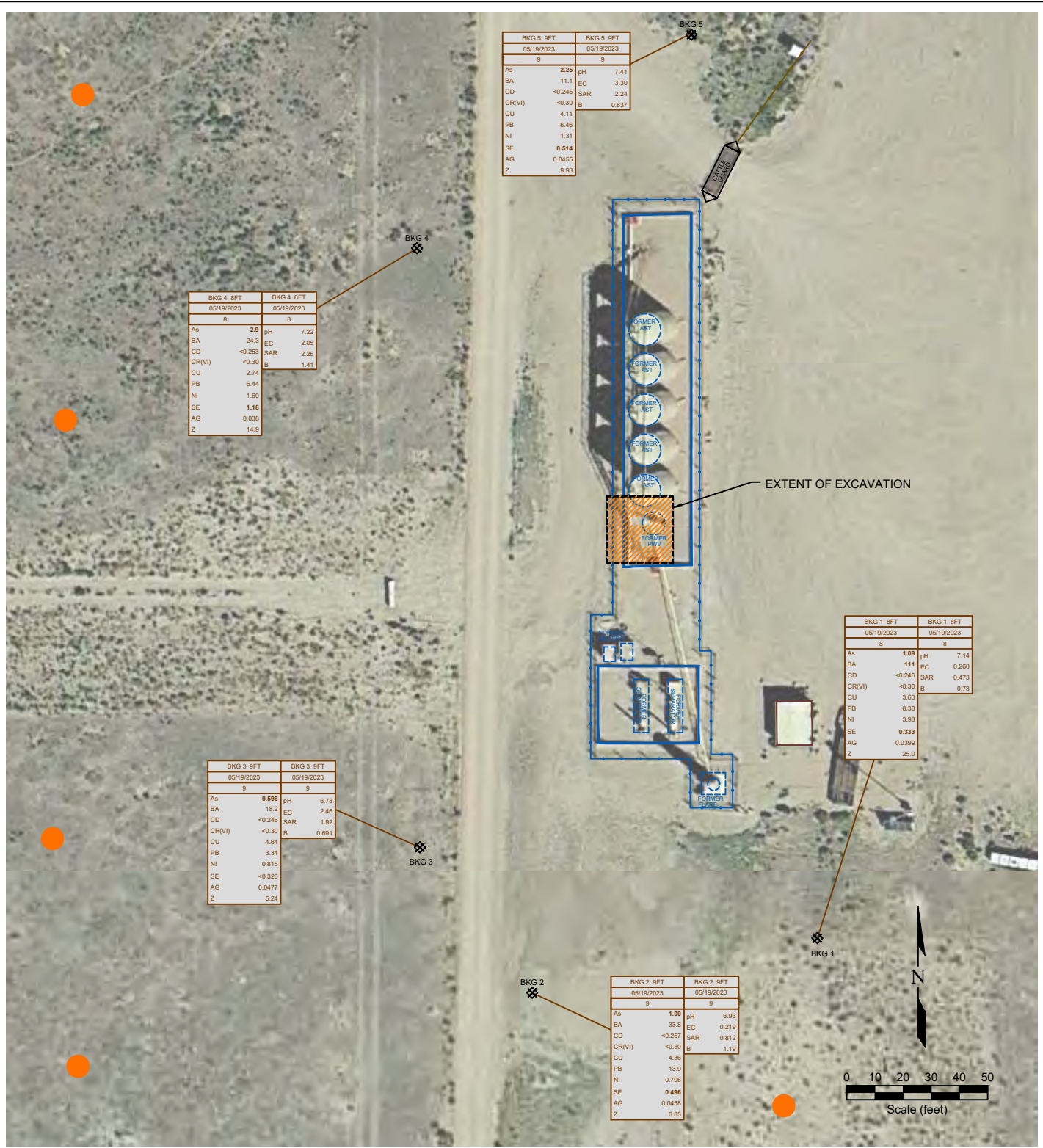
SAMPLE DATE	SAMPLE ID	SAMPLE DATE	SAMPLE ID
DEPTH (ft)	DEPTH (ft)	DEPTH (ft)	DEPTH (ft)
<0.01	ARSENIC (mg/kg)	<0.01	pH (pH units)
<0.01	BARIUM (mg/kg)	7.00	EC (mmhos/cm)
<0.01	CADMIUM (mg/kg)	<1	SAR (unit)
<0.01	CHROMIUM (mg/kg)	<3	BORON (mg/L)
<0.01	COPPER (mg/kg)		
<0.01	LEAD (mg/kg)		
<0.01	NICKEL (mg/kg)		
<0.1	SELENIUM (mg/kg)		
<0.01	SILVER (mg/kg)		
<0.01	ZINC (mg/kg)		

Figure 4

METALS AND INORGANIC SOIL CHEMISTRY MAP

Noble Energy, Inc. ~ Ball Ranch AC 15-03
 NWNW Sec. 15, T7N, R63W, 6th PM
 Weld County, Colorado
 40.577687°, -104.430380°

Project No. C022-124	API #	Facility # 427188	
Date 12/12/24	Remediation # 23764	Filename 22124Q2	



BKG 5 9FT		BKG 5 9FT	
05/19/2023		05/19/2023	
g		g	
As	2.25	pH	7.41
BA	11.1	EC	3.30
CD	<0.245	SAR	2.24
CR(VI)	<0.30	B	0.837
CU	4.11		
PB	6.46		
NI	1.31		
SE	0.514		
AG	0.0455		
Z	9.93		

BKG 4 8FT		BKG 4 8FT	
05/19/2023		05/19/2023	
g		g	
As	2.9	pH	7.22
BA	24.3	EC	2.05
CD	<0.253	SAR	2.26
CR(VI)	<0.30	B	1.41
CU	2.74		
PB	6.44		
NI	1.60		
SE	1.18		
AG	0.038		
Z	14.9		

BKG 3 9FT		BKG 3 9FT	
05/19/2023		05/19/2023	
g		g	
As	0.596	pH	6.78
BA	18.2	EC	2.46
CD	<0.246	SAR	1.92
CR(VI)	<0.30	B	0.691
CU	4.64		
PB	3.34		
NI	0.815		
SE	<0.320		
AG	0.0477		
Z	5.24		

BKG 1 8FT		BKG 1 8FT	
05/19/2023		05/19/2023	
g		g	
As	1.09	pH	7.14
BA	111	EC	0.260
CD	<0.246	SAR	0.473
CR(VI)	<0.30	B	0.73
CU	3.63		
PB	8.36		
NI	3.96		
SE	0.333		
AG	0.0399		
Z	25.0		

BKG 2 9FT		BKG 2 9FT	
05/19/2023		05/19/2023	
g		g	
As	1.00	pH	6.93
BA	33.8	EC	0.219
CD	<0.257	SAR	0.812
CR(VI)	<0.30	B	1.16
CU	4.36		
PB	13.9		
NI	0.706		
SE	0.496		
AG	0.0458		
Z	6.85		

LEGEND

- WELL HEAD LOCATION
- ⊗ SOIL SAMPLE LOCATION
- ABOVE GROUND STORAGE TANK
- FORMER FACILITY
- EXTENT OF EXCAVATION
- AREA OF EXCAVATION
- BUILDING
- FENCE LINE
- CONTAINMENT WALL

● Proposed Background Sampling

SAMPLE	SAMPLE ID	SAMPLE DATE	SAMPLE DATE
DATE	DEPTH (ft)	DATE	DEPTH (ft)
As	<0.01	ARSENIC (mg/kg)	pH
BA	<0.01	BARIUM (mg/kg)	EC
CD	<0.01	CADMIUM (mg/kg)	SAR
CR(VI)	<0.01	CHROMIUM (mg/kg)	B
CU	<0.01	COPPER (mg/kg)	
PB	<0.01	LEAD (mg/kg)	
NI	<0.01	NICKEL (mg/kg)	
SE	<0.01	SELENIUM (mg/kg)	
AG	<0.01	SILVER (mg/kg)	
Z	<0.01	ZINC (mg/kg)	

**Figure 5
BACKGROUND SAMPLE SOIL CHEMISTRY MAP**

Noble Energy, Inc. ~ Ball Ranch AC 15-03
 NWNW Sec. 15, T7N, R63W, 6th PM
 Weld County, Colorado
 40.577687°, -104.430380°

Project No. C022-124	API #	Facility # 427188	
Date 12/12/24	Remediation # 23764	Filename 22124Q2	