

**KT Resources LLC
WRD Federal 25-32
Location ID: 316141**

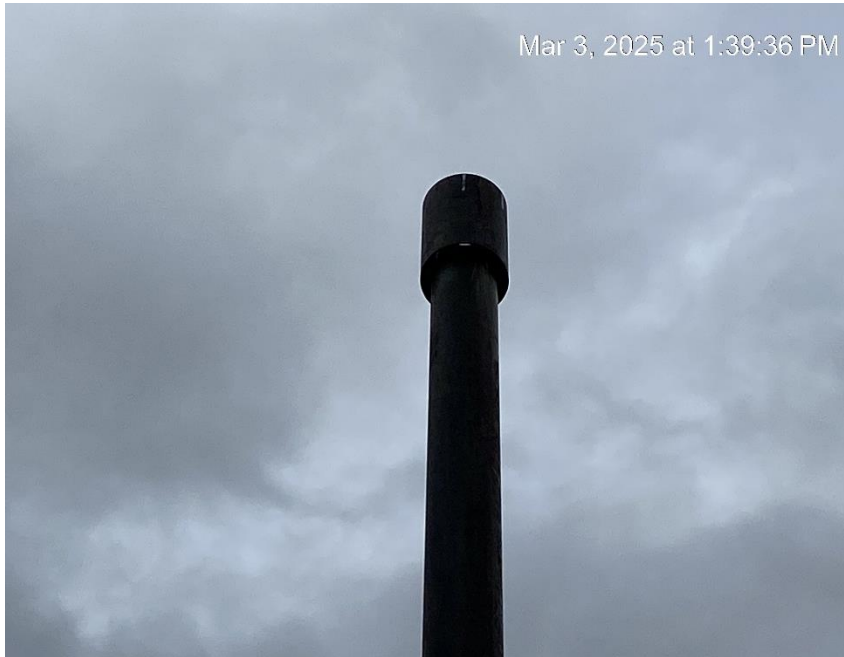


Missing information



Missing required information

**KT Resources LLC
WRD Federal 25-32
Location ID: 316141**



Mar 3, 2025 at 1:39:36 PM

Unable to verify bird protection



Mar 3, 2025 at 1:39:40 PM

Bird protector



KT Resources LLC
WRD Federal 25-32
Location ID: 316141



Leaking load line



Leaking load line

**KT Resources LLC
WRD Federal 25-32
Location ID: 316141**



Erosion and sediment migration from location



Erosion and sediment migration from location

**KT Resources LLC
WRD Federal 25-32
Location ID: 316141**



Sediment migration from access road on to location



Sediment migration from access road on to location

KT Resources LLC
WRD Federal 25-32
Location ID: 316141

Eol. 5855' R. o Blanco Mar 3, 2025 at 1:44:28 PM

IMPACT ANALYTICAL SYSTEMS INC.
365 SOUTH MAIN
BRIGHTON, CO 80601
303-637-0150 www.empactanalytical.com

Meter S/N
15828773
C-09226

Station Name WRD County 25-32
Station No. 120275567 Producer 310P
Sec 25 Township 2N Range 97W
Diff 250" Temp Range 0-150' Tube Size 2.067
Static 200* Absolute 11.84 psig

	Date	Orifice Plate Size	Meter Test Date	Sample Date
3M	3-21-18	1.125 NB.W	3-21-18	3-21-18
KB	8-22-18	1.125	8-22-18	8-22-18
KB	2-27-19	1.125	2-27-19	3-18-19
cl. 8521	9-11-19	1.125	9-11-19	9-10-19
	2-8-22	1.125	2-8-22	

KB



Calibration overdue

Location from Southwest entrance

**KT Resources LLC
WRD Federal 25-32
Location ID: 316141**



Location from North corner



Location from East corner