

EXTRACTION OIL & GAS

**WELD COUNTY
SEC 28-T5N-66W
T-BONE 22N-20-06**

OWB

Plan: PROPOSAL 1

Standard Planning Report

11 February, 2025



Project: WELD COUNTY
Site: SEC 28-T5N-66W
Well: T-BONE 22N-20-06
Wellbore: OWB
Design: PROPOSAL 1

PROJECT DETAILS: WELD COUNTY

Geodetic System: US State Plane 1983
 Datum: North American Datum 1983
 Ellipsoid: GRS 1980
 Zone: Colorado Northern Zone

System Datum: Mean Sea Level



Azimuths to True North
 Magnetic North: 7.48°

Magnetic Field
 Strength: 51551.4nT
 Dip Angle: 66.47°
 Date: 1/30/2025
 Model: IGRF2020

WELL DETAILS: T-BONE 22N-20-06

+N/-S	+E/-W	Northing	Easting	Latitude	Longitude	Slot
0.00	0.00	1376502.10	3198956.39	40.364701°N	104.786005°W	

SECTION DETAILS

Sec	MD	Inc	Azi	TVD	+N/-S	+E/-W	Dleg	TFace	VSec	Target
1	0.00	0.00	0.00	0.00	0.00	0.00	0.00	0.00	0.00	
2	400.00	0.00	0.00	400.00	0.00	0.00	0.00	0.00	0.00	
3	2986.97	51.74	45.59	2649.44	763.37	779.18	2.00	45.59	954.62	
4	9703.25	51.74	45.59	6808.42	4453.99	4546.23	0.00	0.00	5569.86	
5	10270.61	90.00	359.90	7000.00	4933.38	4719.20	10.00	-58.85	6078.71	LP-T-BONE 22N-20-06
6	21052.34	90.00	359.90	7000.00	15715.09	4699.88	0.00	0.00	16402.83	PBHL-T-BONE 22N-20-06

ANNOTATIONS

MD	Inc	Azi	TVD	+N/-S	+E/-W	VSec	Departure	Annotation
400.00	0.00	0.00	400.00	0.00	0.00	0.00	0.00	Start Build 2.00
2986.97	51.74	45.59	2649.44	763.37	779.18	954.62	1090.80	Start 6716.29 hold at 2986.97 MD
9703.25	51.74	45.59	6808.42	4453.99	4546.23	5569.86	6364.45	Start DLS 10.00 TFO -58.85
10270.61	90.00	359.90	7000.00	4933.38	4719.20	6078.71	6887.05	Start 10781.73 hold at 10270.61 MD
21052.34	90.00	359.90	7000.00	15715.09	4699.88	16402.83	17668.78	TD at 21052.34

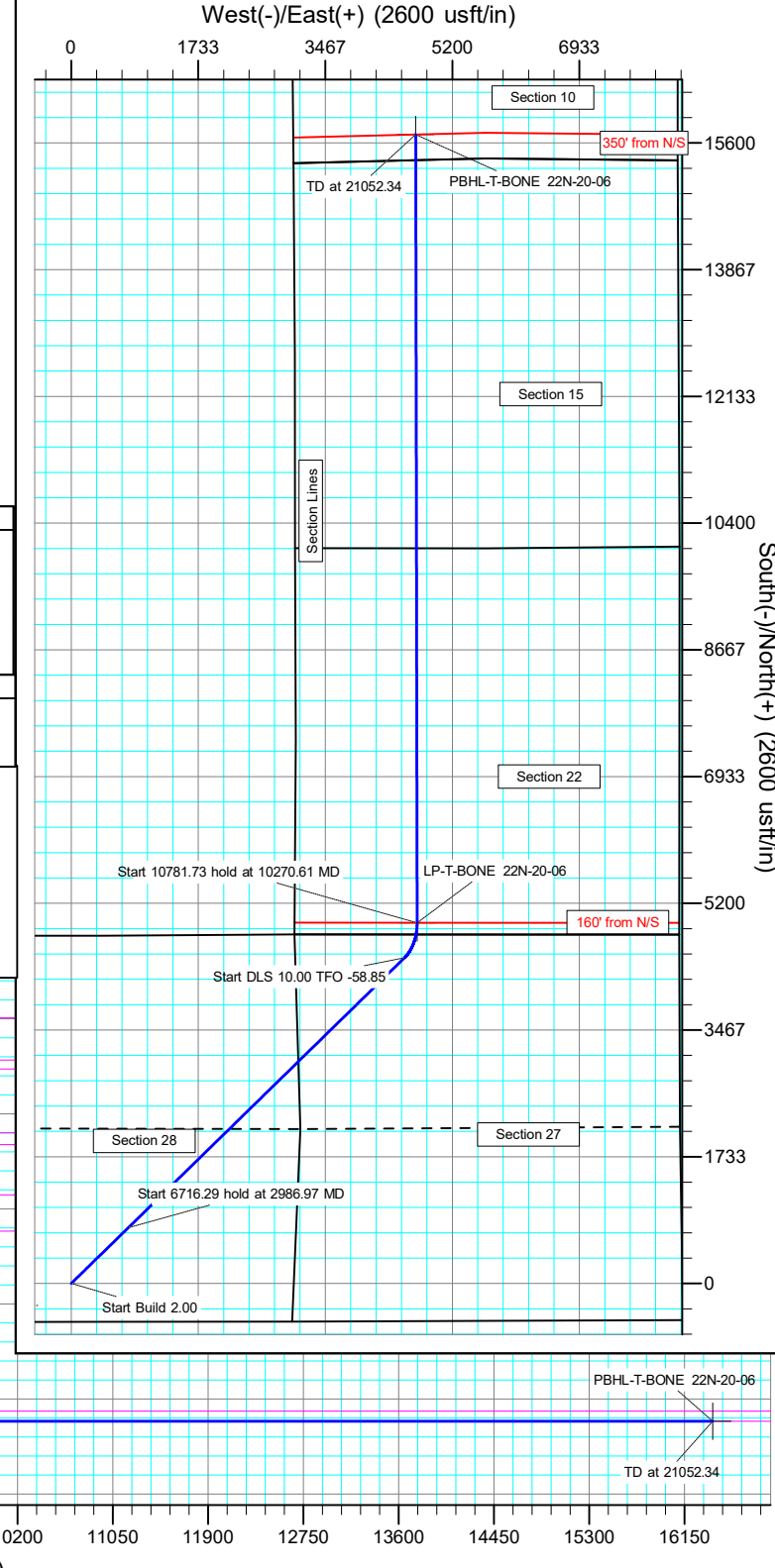
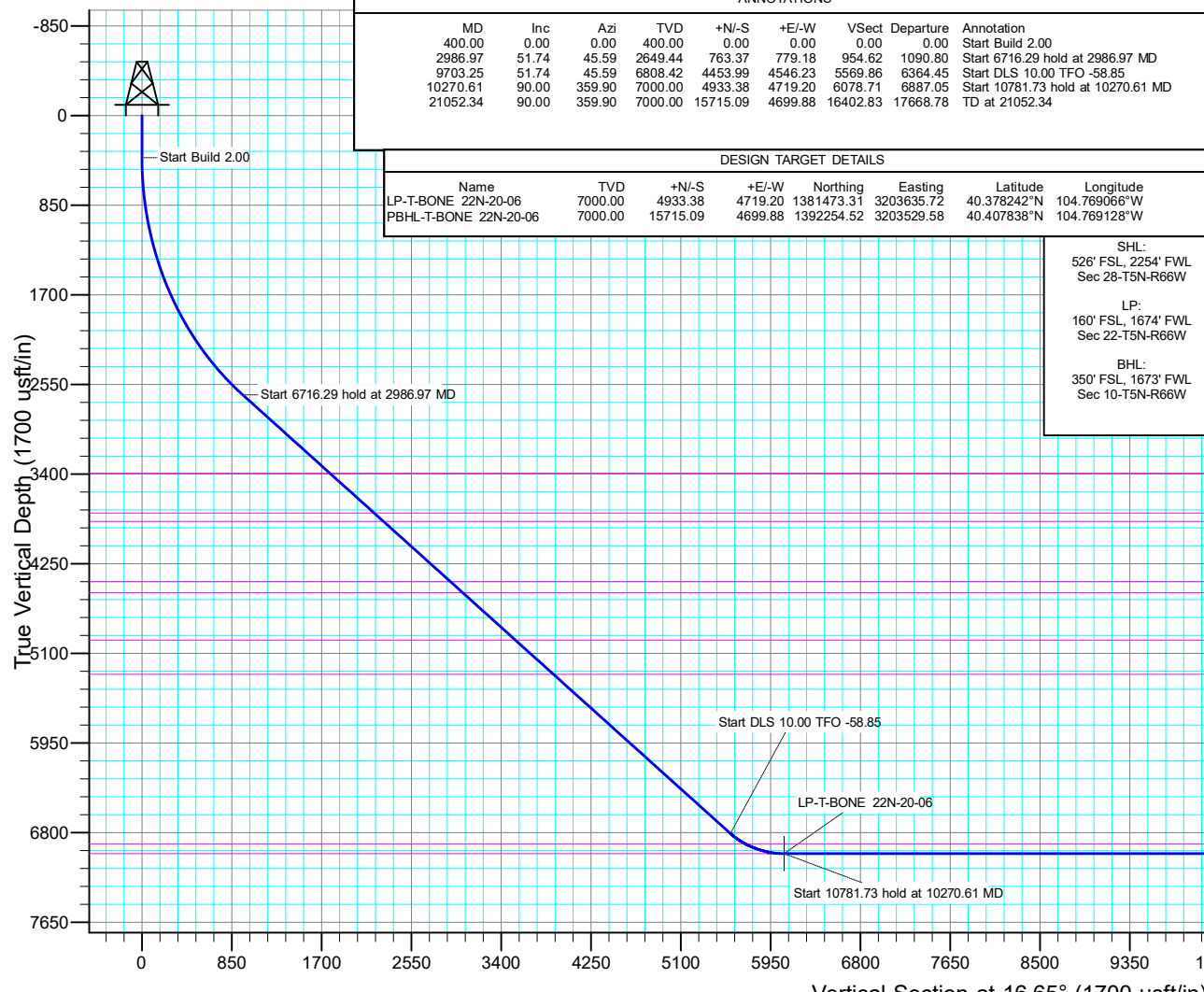
DESIGN TARGET DETAILS

Name	TVD	+N/-S	+E/-W	Northing	Easting	Latitude	Longitude
LP-T-BONE 22N-20-06	7000.00	4933.38	4719.20	1381473.31	3203635.72	40.378242°N	104.769066°W
PBHL-T-BONE 22N-20-06	7000.00	15715.09	4699.88	1392254.52	3203529.58	40.407838°N	104.769128°W

SHL:
 526' FSL, 2254' FWL
 Sec 28-T5N-R66W

LP:
 160' FSL, 1674' FWL
 Sec 22-T5N-R66W

BHL:
 350' FSL, 1673' FWL
 Sec 10-T5N-R66W



Civitas Resources

Planning Report

Database:	EDM	Local Co-ordinate Reference:	Well T-BONE 22N-20-06
Company:	EXTRACTION OIL & GAS	TVD Reference:	KBE 25' @ 4838.00usft
Project:	WELD COUNTY	MD Reference:	KBE 25' @ 4838.00usft
Site:	SEC 28-T5N-66W	North Reference:	True
Well:	T-BONE 22N-20-06	Survey Calculation Method:	Minimum Curvature
Wellbore:	OWB		
Design:	PROPOSAL 1		

Project	WELD COUNTY		
Map System:	US State Plane 1983	System Datum:	Mean Sea Level
Geo Datum:	North American Datum 1983		
Map Zone:	Colorado Northern Zone		

Site	SEC 28-T5N-66W				
Site Position:		Northing:	1,375,980.59 usft	Latitude:	40.363261°N
From:	Lat/Long	Easting:	3,199,339.03 usft	Longitude:	104.784647°W
Position Uncertainty:	0.00 usft	Slot Radius:	13.200 in	Grid Convergence:	0.46 °

Well	T-BONE 22N-20-06					
Well Position	+N/-S	524.57 usft	Northing:	1,376,502.10 usft	Latitude:	40.364701°N
	+E/-W	-378.41 usft	Easting:	3,198,956.39 usft	Longitude:	104.786005°W
Position Uncertainty		0.00 usft	Wellhead Elevation:		Ground Level:	4,813.00 usft

Wellbore	OWB				
Magnetics	Model Name	Sample Date	Declination (°)	Dip Angle (°)	Field Strength (nT)
	IGRF2020	1/30/2025	7.48	66.47	51,551.42467601

Design	PROPOSAL 1			
Audit Notes:				
Version:	Phase:	PROTOTYPE	Tie On Depth:	0.00
Vertical Section:	Depth From (TVD) (usft)	+N/-S (usft)	+E/-W (usft)	Direction (°)
	0.00	0.00	0.00	16.65

Plan Survey Tool Program	Date	2/11/2025			
Depth From (usft)	Depth To (usft)	Survey (Wellbore)	Tool Name	Remarks	
1	0.00	21,052.34	PROPOSAL 1 (OWB)	MWD OWSG	
				OWSG MWD - Standard	

Plan Sections										
Measured Depth (usft)	Inclination (°)	Azimuth (°)	Vertical Depth (usft)	+N/-S (usft)	+E/-W (usft)	Dogleg Rate (°/100ft)	Build Rate (°/100ft)	Turn Rate (°/100ft)	TFO (°)	Target
0.00	0.00	0.00	0.00	0.00	0.00	0.00	0.00	0.00	0.00	
400.00	0.00	0.00	400.00	0.00	0.00	0.00	0.00	0.00	0.00	
2,986.97	51.74	45.59	2,649.44	763.37	779.18	2.00	2.00	0.00	45.59	
9,703.25	51.74	45.59	6,808.42	4,453.99	4,546.23	0.00	0.00	0.00	0.00	
10,270.61	90.00	359.90	7,000.00	4,933.38	4,719.20	10.00	6.74	-8.05	-58.85	LP-T-BONE 22N-20-C
21,052.34	90.00	359.90	7,000.00	15,715.09	4,699.88	0.00	0.00	0.00	0.00	PBHL-T-BONE 22N-2

Civitas Resources

Planning Report

Database:	EDM	Local Co-ordinate Reference:	Well T-BONE 22N-20-06
Company:	EXTRACTION OIL & GAS	TVD Reference:	KBE 25' @ 4838.00usft
Project:	WELD COUNTY	MD Reference:	KBE 25' @ 4838.00usft
Site:	SEC 28-T5N-66W	North Reference:	True
Well:	T-BONE 22N-20-06	Survey Calculation Method:	Minimum Curvature
Wellbore:	OWB		
Design:	PROPOSAL 1		

Planned Survey									
Measured Depth (usft)	Inclination (°)	Azimuth (°)	Vertical Depth (usft)	+N-S (usft)	+E-W (usft)	Vertical Section (usft)	Dogleg Rate (°/100ft)	Build Rate (°/100ft)	Turn Rate (°/100ft)
0.00	0.00	0.00	0.00	0.00	0.00	0.00	0.00	0.00	0.00
100.00	0.00	0.00	100.00	0.00	0.00	0.00	0.00	0.00	0.00
200.00	0.00	0.00	200.00	0.00	0.00	0.00	0.00	0.00	0.00
300.00	0.00	0.00	300.00	0.00	0.00	0.00	0.00	0.00	0.00
400.00	0.00	0.00	400.00	0.00	0.00	0.00	0.00	0.00	0.00
Start Build 2.00									
500.00	2.00	45.59	499.98	1.22	1.25	1.53	2.00	2.00	0.00
600.00	4.00	45.59	599.84	4.88	4.98	6.11	2.00	2.00	0.00
700.00	6.00	45.59	699.45	10.98	11.21	13.73	2.00	2.00	0.00
800.00	8.00	45.59	798.70	19.51	19.92	24.40	2.00	2.00	0.00
900.00	10.00	45.59	897.47	30.46	31.09	38.09	2.00	2.00	0.00
1,000.00	12.00	45.59	995.62	43.81	44.72	54.79	2.00	2.00	0.00
1,100.00	14.00	45.59	1,093.06	59.55	60.79	74.47	2.00	2.00	0.00
1,200.00	16.00	45.59	1,189.64	77.66	79.27	97.12	2.00	2.00	0.00
1,300.00	18.00	45.59	1,285.27	98.12	100.16	122.71	2.00	2.00	0.00
1,400.00	20.00	45.59	1,379.82	120.91	123.41	151.20	2.00	2.00	0.00
1,500.00	22.00	45.59	1,473.17	145.99	149.01	182.56	2.00	2.00	0.00
1,600.00	24.00	45.59	1,565.21	173.33	176.92	216.75	2.00	2.00	0.00
1,700.00	26.00	45.59	1,655.84	202.90	207.10	253.74	2.00	2.00	0.00
1,800.00	28.00	45.59	1,744.94	234.67	239.53	293.47	2.00	2.00	0.00
1,900.00	30.00	45.59	1,832.39	268.60	274.16	335.89	2.00	2.00	0.00
2,000.00	32.00	45.59	1,918.11	304.64	310.95	380.96	2.00	2.00	0.00
2,100.00	34.00	45.59	2,001.97	342.75	349.85	428.63	2.00	2.00	0.00
2,200.00	36.00	45.59	2,083.88	382.89	390.82	478.82	2.00	2.00	0.00
2,300.00	38.00	45.59	2,163.74	425.01	433.81	531.49	2.00	2.00	0.00
2,400.00	40.00	45.59	2,241.45	469.05	478.76	586.56	2.00	2.00	0.00
2,500.00	42.00	45.59	2,316.92	514.96	525.62	643.97	2.00	2.00	0.00
2,600.00	44.00	45.59	2,390.05	562.68	574.33	703.65	2.00	2.00	0.00
2,700.00	46.00	45.59	2,460.76	612.16	624.84	765.53	2.00	2.00	0.00
2,800.00	48.00	45.59	2,528.95	663.34	677.08	829.53	2.00	2.00	0.00
2,900.00	50.00	45.59	2,594.55	716.16	730.99	895.58	2.00	2.00	0.00
2,986.97	51.74	45.59	2,649.44	763.37	779.18	954.62	2.00	2.00	0.00
Start 6716.29 hold at 2986.97 MD									
3,000.00	51.74	45.59	2,657.51	770.53	786.49	963.57	0.00	0.00	0.00
3,100.00	51.74	45.59	2,719.43	825.48	842.57	1,032.29	0.00	0.00	0.00
3,200.00	51.74	45.59	2,781.35	880.43	898.66	1,101.01	0.00	0.00	0.00
3,300.00	51.74	45.59	2,843.28	935.38	954.75	1,169.72	0.00	0.00	0.00
3,400.00	51.74	45.59	2,905.20	990.33	1,010.84	1,238.44	0.00	0.00	0.00
3,500.00	51.74	45.59	2,967.13	1,045.28	1,066.93	1,307.16	0.00	0.00	0.00
3,600.00	51.74	45.59	3,029.05	1,100.23	1,123.01	1,375.88	0.00	0.00	0.00
3,700.00	51.74	45.59	3,090.97	1,155.18	1,179.10	1,444.59	0.00	0.00	0.00
3,800.00	51.74	45.59	3,152.90	1,210.13	1,235.19	1,513.31	0.00	0.00	0.00
3,900.00	51.74	45.59	3,214.82	1,265.08	1,291.28	1,582.03	0.00	0.00	0.00
4,000.00	51.74	45.59	3,276.74	1,320.03	1,347.37	1,650.74	0.00	0.00	0.00
4,100.00	51.74	45.59	3,338.67	1,374.98	1,403.46	1,719.46	0.00	0.00	0.00
4,186.12	51.74	45.59	3,392.00	1,422.31	1,451.76	1,778.64	0.00	0.00	0.00
Base of Upper Pierre aquifer									
4,200.00	51.74	45.59	3,400.59	1,429.93	1,459.54	1,788.18	0.00	0.00	0.00
4,300.00	51.74	45.59	3,462.52	1,484.88	1,515.63	1,856.90	0.00	0.00	0.00
4,400.00	51.74	45.59	3,524.44	1,539.83	1,571.72	1,925.61	0.00	0.00	0.00
4,500.00	51.74	45.59	3,586.36	1,594.78	1,627.81	1,994.33	0.00	0.00	0.00
4,600.00	51.74	45.59	3,648.29	1,649.73	1,683.90	2,063.05	0.00	0.00	0.00
4,700.00	51.74	45.59	3,710.21	1,704.68	1,739.99	2,131.76	0.00	0.00	0.00

Civitas Resources

Planning Report

Database:	EDM	Local Co-ordinate Reference:	Well T-BONE 22N-20-06
Company:	EXTRACTION OIL & GAS	TVD Reference:	KBE 25' @ 4838.00usft
Project:	WELD COUNTY	MD Reference:	KBE 25' @ 4838.00usft
Site:	SEC 28-T5N-66W	North Reference:	True
Well:	T-BONE 22N-20-06	Survey Calculation Method:	Minimum Curvature
Wellbore:	OWB		
Design:	PROPOSAL 1		

Planned Survey										
Measured Depth (usft)	Inclination (°)	Azimuth (°)	Vertical Depth (usft)	+N/-S (usft)	+E/-W (usft)	Vertical Section (usft)	Dogleg Rate (°/100ft)	Build Rate (°/100ft)	Turn Rate (°/100ft)	
4,796.55	51.74	45.59	3,770.00	1,757.74	1,794.14	2,198.11	0.00	0.00	0.00	
Larimer ("Parkman") sandstone										
4,800.00	51.74	45.59	3,772.14	1,759.63	1,796.07	2,200.48	0.00	0.00	0.00	
4,900.00	51.74	45.59	3,834.06	1,814.58	1,852.16	2,269.20	0.00	0.00	0.00	
4,925.74	51.74	45.59	3,850.00	1,828.73	1,866.60	2,286.89	0.00	0.00	0.00	
Larimer ("Parkman") sandstone Base										
5,000.00	51.74	45.59	3,895.98	1,869.53	1,908.25	2,337.92	0.00	0.00	0.00	
5,100.00	51.74	45.59	3,957.91	1,924.49	1,964.34	2,406.63	0.00	0.00	0.00	
5,200.00	51.74	45.59	4,019.83	1,979.44	2,020.43	2,475.35	0.00	0.00	0.00	
5,300.00	51.74	45.59	4,081.75	2,034.39	2,076.52	2,544.07	0.00	0.00	0.00	
5,400.00	51.74	45.59	4,143.68	2,089.34	2,132.60	2,612.79	0.00	0.00	0.00	
5,500.00	51.74	45.59	4,205.60	2,144.29	2,188.69	2,681.50	0.00	0.00	0.00	
5,600.00	51.74	45.59	4,267.53	2,199.24	2,244.78	2,750.22	0.00	0.00	0.00	
5,700.00	51.74	45.59	4,329.45	2,254.19	2,300.87	2,818.94	0.00	0.00	0.00	
5,800.00	51.74	45.59	4,391.37	2,309.14	2,356.96	2,887.65	0.00	0.00	0.00	
5,846.23	51.74	45.59	4,420.00	2,334.54	2,382.89	2,919.42	0.00	0.00	0.00	
Terry ("Sussex") sandstone										
5,900.00	51.74	45.59	4,453.30	2,364.09	2,413.05	2,956.37	0.00	0.00	0.00	
6,000.00	51.74	45.59	4,515.22	2,419.04	2,469.13	3,025.09	0.00	0.00	0.00	
6,015.79	51.74	45.59	4,525.00	2,427.72	2,477.99	3,035.94	0.00	0.00	0.00	
Terry ("Sussex") sandstone Base										
6,100.00	51.74	45.59	4,577.15	2,473.99	2,525.22	3,093.81	0.00	0.00	0.00	
6,200.00	51.74	45.59	4,639.07	2,528.94	2,581.31	3,162.52	0.00	0.00	0.00	
6,300.00	51.74	45.59	4,700.99	2,583.89	2,637.40	3,231.24	0.00	0.00	0.00	
6,400.00	51.74	45.59	4,762.92	2,638.84	2,693.49	3,299.96	0.00	0.00	0.00	
6,500.00	51.74	45.59	4,824.84	2,693.79	2,749.58	3,368.68	0.00	0.00	0.00	
6,600.00	51.74	45.59	4,886.76	2,748.74	2,805.66	3,437.39	0.00	0.00	0.00	
6,700.00	51.74	45.59	4,948.69	2,803.69	2,861.75	3,506.11	0.00	0.00	0.00	
6,742.49	51.74	45.59	4,975.00	2,827.04	2,885.58	3,535.31	0.00	0.00	0.00	
Hygiene ("Shannon") sandstone										
6,800.00	51.74	45.59	5,010.61	2,858.64	2,917.84	3,574.83	0.00	0.00	0.00	
6,900.00	51.74	45.59	5,072.54	2,913.59	2,973.93	3,643.54	0.00	0.00	0.00	
7,000.00	51.74	45.59	5,134.46	2,968.54	3,030.02	3,712.26	0.00	0.00	0.00	
7,100.00	51.74	45.59	5,196.38	3,023.49	3,086.11	3,780.98	0.00	0.00	0.00	
7,200.00	51.74	45.59	5,258.31	3,078.44	3,142.19	3,849.70	0.00	0.00	0.00	
7,267.33	51.74	45.59	5,300.00	3,115.44	3,179.96	3,895.96	0.00	0.00	0.00	
Hygiene ("Shannon") sandstone Base										
7,300.00	51.74	45.59	5,320.23	3,133.39	3,198.28	3,918.41	0.00	0.00	0.00	
7,400.00	51.74	45.59	5,382.16	3,188.34	3,254.37	3,987.13	0.00	0.00	0.00	
7,500.00	51.74	45.59	5,444.08	3,243.29	3,310.46	4,055.85	0.00	0.00	0.00	
7,600.00	51.74	45.59	5,506.00	3,298.24	3,366.55	4,124.57	0.00	0.00	0.00	
7,700.00	51.74	45.59	5,567.93	3,353.19	3,422.64	4,193.28	0.00	0.00	0.00	
7,800.00	51.74	45.59	5,629.85	3,408.14	3,478.72	4,262.00	0.00	0.00	0.00	
7,900.00	51.74	45.59	5,691.77	3,463.09	3,534.81	4,330.72	0.00	0.00	0.00	
8,000.00	51.74	45.59	5,753.70	3,518.04	3,590.90	4,399.43	0.00	0.00	0.00	
8,100.00	51.74	45.59	5,815.62	3,573.00	3,646.99	4,468.15	0.00	0.00	0.00	
8,200.00	51.74	45.59	5,877.55	3,627.95	3,703.08	4,536.87	0.00	0.00	0.00	
8,300.00	51.74	45.59	5,939.47	3,682.90	3,759.17	4,605.59	0.00	0.00	0.00	
8,400.00	51.74	45.59	6,001.39	3,737.85	3,815.25	4,674.30	0.00	0.00	0.00	
8,500.00	51.74	45.59	6,063.32	3,792.80	3,871.34	4,743.02	0.00	0.00	0.00	
8,600.00	51.74	45.59	6,125.24	3,847.75	3,927.43	4,811.74	0.00	0.00	0.00	
8,700.00	51.74	45.59	6,187.17	3,902.70	3,983.52	4,880.46	0.00	0.00	0.00	
8,800.00	51.74	45.59	6,249.09	3,957.65	4,039.61	4,949.17	0.00	0.00	0.00	

Civitas Resources

Planning Report

Database:	EDM	Local Co-ordinate Reference:	Well T-BONE 22N-20-06
Company:	EXTRACTION OIL & GAS	TVD Reference:	KBE 25' @ 4838.00usft
Project:	WELD COUNTY	MD Reference:	KBE 25' @ 4838.00usft
Site:	SEC 28-T5N-66W	North Reference:	True
Well:	T-BONE 22N-20-06	Survey Calculation Method:	Minimum Curvature
Wellbore:	OWB		
Design:	PROPOSAL 1		

Planned Survey										
Measured Depth (usft)	Inclination (°)	Azimuth (°)	Vertical Depth (usft)	+N/-S (usft)	+E/-W (usft)	Vertical Section (usft)	Dogleg Rate (°/100ft)	Build Rate (°/100ft)	Turn Rate (°/100ft)	
8,900.00	51.74	45.59	6,311.01	4,012.60	4,095.70	5,017.89	0.00	0.00	0.00	
9,000.00	51.74	45.59	6,372.94	4,067.55	4,151.78	5,086.61	0.00	0.00	0.00	
9,100.00	51.74	45.59	6,434.86	4,122.50	4,207.87	5,155.32	0.00	0.00	0.00	
9,200.00	51.74	45.59	6,496.78	4,177.45	4,263.96	5,224.04	0.00	0.00	0.00	
9,300.00	51.74	45.59	6,558.71	4,232.40	4,320.05	5,292.76	0.00	0.00	0.00	
9,400.00	51.74	45.59	6,620.63	4,287.35	4,376.14	5,361.48	0.00	0.00	0.00	
9,500.00	51.74	45.59	6,682.56	4,342.30	4,432.23	5,430.19	0.00	0.00	0.00	
9,600.00	51.74	45.59	6,744.48	4,397.25	4,488.31	5,498.91	0.00	0.00	0.00	
9,703.25	51.74	45.59	6,808.42	4,453.99	4,546.23	5,569.86	0.00	0.00	0.00	
Start DLS 10.00 TFO -58.85										
9,750.00	54.26	40.66	6,836.56	4,481.24	4,571.71	5,603.27	10.00	5.40	-10.54	
9,800.00	57.17	35.73	6,864.73	4,513.71	4,597.22	5,641.69	10.00	5.81	-9.85	
9,850.00	60.26	31.13	6,890.71	4,549.36	4,620.72	5,682.58	10.00	6.17	-9.21	
9,890.51	62.87	27.61	6,910.00	4,580.40	4,638.17	5,717.32	10.00	6.45	-8.69	
Sharon Springs										
9,900.00	63.49	26.80	6,914.28	4,587.94	4,642.04	5,725.65	10.00	6.58	-8.44	
9,950.00	66.85	22.72	6,935.28	4,629.13	4,661.02	5,770.56	10.00	6.72	-8.16	
10,000.00	70.31	18.84	6,953.55	4,672.64	4,677.52	5,816.97	10.00	6.92	-7.76	
10,050.00	73.85	15.13	6,968.93	4,718.13	4,691.40	5,864.52	10.00	7.08	-7.43	
10,100.00	77.45	11.55	6,981.33	4,765.25	4,702.56	5,912.86	10.00	7.20	-7.16	
10,150.00	81.10	8.07	6,990.63	4,813.64	4,710.92	5,961.62	10.00	7.29	-6.96	
10,200.00	84.78	4.66	6,996.78	4,862.94	4,716.41	6,010.43	10.00	7.36	-6.83	
10,250.00	88.47	1.28	6,999.73	4,912.77	4,718.99	6,058.91	10.00	7.39	-6.75	
10,270.61	90.00	359.90	7,000.00	4,933.38	4,719.20	6,078.71	10.00	7.41	-6.72	
Start 10781.73 hold at 10270.61 MD - Niobrara A Chalk										
10,300.00	90.00	359.90	7,000.00	4,962.77	4,719.15	6,106.86	0.00	0.00	0.00	
10,400.00	90.00	359.90	7,000.00	5,062.77	4,718.97	6,202.61	0.00	0.00	0.00	
10,500.00	90.00	359.90	7,000.00	5,162.77	4,718.79	6,298.37	0.00	0.00	0.00	
10,600.00	90.00	359.90	7,000.00	5,262.77	4,718.61	6,394.12	0.00	0.00	0.00	
10,700.00	90.00	359.90	7,000.00	5,362.76	4,718.43	6,489.88	0.00	0.00	0.00	
10,800.00	90.00	359.90	7,000.00	5,462.76	4,718.25	6,585.63	0.00	0.00	0.00	
10,900.00	90.00	359.90	7,000.00	5,562.76	4,718.08	6,681.39	0.00	0.00	0.00	
11,000.00	90.00	359.90	7,000.00	5,662.76	4,717.90	6,777.15	0.00	0.00	0.00	
11,100.00	90.00	359.90	7,000.00	5,762.76	4,717.72	6,872.90	0.00	0.00	0.00	
11,200.00	90.00	359.90	7,000.00	5,862.76	4,717.54	6,968.66	0.00	0.00	0.00	
11,300.00	90.00	359.90	7,000.00	5,962.76	4,717.36	7,064.41	0.00	0.00	0.00	
11,400.00	90.00	359.90	7,000.00	6,062.76	4,717.18	7,160.17	0.00	0.00	0.00	
11,500.00	90.00	359.90	7,000.00	6,162.76	4,717.00	7,255.92	0.00	0.00	0.00	
11,600.00	90.00	359.90	7,000.00	6,262.76	4,716.82	7,351.68	0.00	0.00	0.00	
11,700.00	90.00	359.90	7,000.00	6,362.76	4,716.64	7,447.44	0.00	0.00	0.00	
11,800.00	90.00	359.90	7,000.00	6,462.76	4,716.47	7,543.19	0.00	0.00	0.00	
11,900.00	90.00	359.90	7,000.00	6,562.76	4,716.29	7,638.95	0.00	0.00	0.00	
12,000.00	90.00	359.90	7,000.00	6,662.76	4,716.11	7,734.70	0.00	0.00	0.00	
12,100.00	90.00	359.90	7,000.00	6,762.76	4,715.93	7,830.46	0.00	0.00	0.00	
12,200.00	90.00	359.90	7,000.00	6,862.76	4,715.75	7,926.22	0.00	0.00	0.00	
12,300.00	90.00	359.90	7,000.00	6,962.76	4,715.57	8,021.97	0.00	0.00	0.00	
12,400.00	90.00	359.90	7,000.00	7,062.76	4,715.39	8,117.73	0.00	0.00	0.00	
12,500.00	90.00	359.90	7,000.00	7,162.76	4,715.21	8,213.48	0.00	0.00	0.00	
12,600.00	90.00	359.90	7,000.00	7,262.76	4,715.04	8,309.24	0.00	0.00	0.00	
12,700.00	90.00	359.90	7,000.00	7,362.76	4,714.86	8,404.99	0.00	0.00	0.00	
12,800.00	90.00	359.90	7,000.00	7,462.76	4,714.68	8,500.75	0.00	0.00	0.00	
12,900.00	90.00	359.90	7,000.00	7,562.76	4,714.50	8,596.51	0.00	0.00	0.00	
13,000.00	90.00	359.90	7,000.00	7,662.76	4,714.32	8,692.26	0.00	0.00	0.00	

Civitas Resources

Planning Report

Database:	EDM	Local Co-ordinate Reference:	Well T-BONE 22N-20-06
Company:	EXTRACTION OIL & GAS	TVD Reference:	KBE 25' @ 4838.00usft
Project:	WELD COUNTY	MD Reference:	KBE 25' @ 4838.00usft
Site:	SEC 28-T5N-66W	North Reference:	True
Well:	T-BONE 22N-20-06	Survey Calculation Method:	Minimum Curvature
Wellbore:	OWB		
Design:	PROPOSAL 1		

Planned Survey									
Measured Depth (usft)	Inclination (°)	Azimuth (°)	Vertical Depth (usft)	+N/-S (usft)	+E/-W (usft)	Vertical Section (usft)	Dogleg Rate (°/100ft)	Build Rate (°/100ft)	Turn Rate (°/100ft)
13,100.00	90.00	359.90	7,000.00	7,762.76	4,714.14	8,788.02	0.00	0.00	0.00
13,200.00	90.00	359.90	7,000.00	7,862.76	4,713.96	8,883.77	0.00	0.00	0.00
13,300.00	90.00	359.90	7,000.00	7,962.76	4,713.78	8,979.53	0.00	0.00	0.00
13,400.00	90.00	359.90	7,000.00	8,062.76	4,713.60	9,075.28	0.00	0.00	0.00
13,500.00	90.00	359.90	7,000.00	8,162.76	4,713.43	9,171.04	0.00	0.00	0.00
13,600.00	90.00	359.90	7,000.00	8,262.76	4,713.25	9,266.80	0.00	0.00	0.00
13,700.00	90.00	359.90	7,000.00	8,362.76	4,713.07	9,362.55	0.00	0.00	0.00
13,800.00	90.00	359.90	7,000.00	8,462.76	4,712.89	9,458.31	0.00	0.00	0.00
13,900.00	90.00	359.90	7,000.00	8,562.76	4,712.71	9,554.06	0.00	0.00	0.00
14,000.00	90.00	359.90	7,000.00	8,662.76	4,712.53	9,649.82	0.00	0.00	0.00
14,100.00	90.00	359.90	7,000.00	8,762.76	4,712.35	9,745.58	0.00	0.00	0.00
14,200.00	90.00	359.90	7,000.00	8,862.76	4,712.17	9,841.33	0.00	0.00	0.00
14,300.00	90.00	359.90	7,000.00	8,962.76	4,712.00	9,937.09	0.00	0.00	0.00
14,400.00	90.00	359.90	7,000.00	9,062.76	4,711.82	10,032.84	0.00	0.00	0.00
14,500.00	90.00	359.90	7,000.00	9,162.76	4,711.64	10,128.60	0.00	0.00	0.00
14,600.00	90.00	359.90	7,000.00	9,262.76	4,711.46	10,224.35	0.00	0.00	0.00
14,700.00	90.00	359.90	7,000.00	9,362.76	4,711.28	10,320.11	0.00	0.00	0.00
14,800.00	90.00	359.90	7,000.00	9,462.76	4,711.10	10,415.87	0.00	0.00	0.00
14,900.00	90.00	359.90	7,000.00	9,562.76	4,710.92	10,511.62	0.00	0.00	0.00
15,000.00	90.00	359.90	7,000.00	9,662.76	4,710.74	10,607.38	0.00	0.00	0.00
15,100.00	90.00	359.90	7,000.00	9,762.76	4,710.56	10,703.13	0.00	0.00	0.00
15,200.00	90.00	359.90	7,000.00	9,862.76	4,710.39	10,798.89	0.00	0.00	0.00
15,300.00	90.00	359.90	7,000.00	9,962.76	4,710.21	10,894.64	0.00	0.00	0.00
15,400.00	90.00	359.90	7,000.00	10,062.76	4,710.03	10,990.40	0.00	0.00	0.00
15,500.00	90.00	359.90	7,000.00	10,162.76	4,709.85	11,086.16	0.00	0.00	0.00
15,600.00	90.00	359.90	7,000.00	10,262.76	4,709.67	11,181.91	0.00	0.00	0.00
15,700.00	90.00	359.90	7,000.00	10,362.76	4,709.49	11,277.67	0.00	0.00	0.00
15,800.00	90.00	359.90	7,000.00	10,462.76	4,709.31	11,373.42	0.00	0.00	0.00
15,900.00	90.00	359.90	7,000.00	10,562.76	4,709.13	11,469.18	0.00	0.00	0.00
16,000.00	90.00	359.90	7,000.00	10,662.76	4,708.96	11,564.94	0.00	0.00	0.00
16,100.00	90.00	359.90	7,000.00	10,762.76	4,708.78	11,660.69	0.00	0.00	0.00
16,200.00	90.00	359.90	7,000.00	10,862.76	4,708.60	11,756.45	0.00	0.00	0.00
16,300.00	90.00	359.90	7,000.00	10,962.76	4,708.42	11,852.20	0.00	0.00	0.00
16,400.00	90.00	359.90	7,000.00	11,062.76	4,708.24	11,947.96	0.00	0.00	0.00
16,500.00	90.00	359.90	7,000.00	11,162.76	4,708.06	12,043.71	0.00	0.00	0.00
16,600.00	90.00	359.90	7,000.00	11,262.76	4,707.88	12,139.47	0.00	0.00	0.00
16,700.00	90.00	359.90	7,000.00	11,362.76	4,707.70	12,235.23	0.00	0.00	0.00
16,800.00	90.00	359.90	7,000.00	11,462.76	4,707.52	12,330.98	0.00	0.00	0.00
16,900.00	90.00	359.90	7,000.00	11,562.76	4,707.35	12,426.74	0.00	0.00	0.00
17,000.00	90.00	359.90	7,000.00	11,662.75	4,707.17	12,522.49	0.00	0.00	0.00
17,100.00	90.00	359.90	7,000.00	11,762.75	4,706.99	12,618.25	0.00	0.00	0.00
17,200.00	90.00	359.90	7,000.00	11,862.75	4,706.81	12,714.00	0.00	0.00	0.00
17,300.00	90.00	359.90	7,000.00	11,962.75	4,706.63	12,809.76	0.00	0.00	0.00
17,400.00	90.00	359.90	7,000.00	12,062.75	4,706.45	12,905.52	0.00	0.00	0.00
17,500.00	90.00	359.90	7,000.00	12,162.75	4,706.27	13,001.27	0.00	0.00	0.00
17,600.00	90.00	359.90	7,000.00	12,262.75	4,706.09	13,097.03	0.00	0.00	0.00
17,700.00	90.00	359.90	7,000.00	12,362.75	4,705.92	13,192.78	0.00	0.00	0.00
17,800.00	90.00	359.90	7,000.00	12,462.75	4,705.74	13,288.54	0.00	0.00	0.00
17,900.00	90.00	359.90	7,000.00	12,562.75	4,705.56	13,384.30	0.00	0.00	0.00
18,000.00	90.00	359.90	7,000.00	12,662.75	4,705.38	13,480.05	0.00	0.00	0.00
18,100.00	90.00	359.90	7,000.00	12,762.75	4,705.20	13,575.81	0.00	0.00	0.00
18,200.00	90.00	359.90	7,000.00	12,862.75	4,705.02	13,671.56	0.00	0.00	0.00
18,300.00	90.00	359.90	7,000.00	12,962.75	4,704.84	13,767.32	0.00	0.00	0.00
18,400.00	90.00	359.90	7,000.00	13,062.75	4,704.66	13,863.07	0.00	0.00	0.00

Civitas Resources

Planning Report

Database:	EDM	Local Co-ordinate Reference:	Well T-BONE 22N-20-06
Company:	EXTRACTION OIL & GAS	TVD Reference:	KBE 25' @ 4838.00usft
Project:	WELD COUNTY	MD Reference:	KBE 25' @ 4838.00usft
Site:	SEC 28-T5N-66W	North Reference:	True
Well:	T-BONE 22N-20-06	Survey Calculation Method:	Minimum Curvature
Wellbore:	OWB		
Design:	PROPOSAL 1		

Planned Survey									
Measured Depth (usft)	Inclination (°)	Azimuth (°)	Vertical Depth (usft)	+N/-S (usft)	+E/-W (usft)	Vertical Section (usft)	Dogleg Rate (°/100ft)	Build Rate (°/100ft)	Turn Rate (°/100ft)
18,500.00	90.00	359.90	7,000.00	13,162.75	4,704.48	13,958.83	0.00	0.00	0.00
18,600.00	90.00	359.90	7,000.00	13,262.75	4,704.31	14,054.59	0.00	0.00	0.00
18,700.00	90.00	359.90	7,000.00	13,362.75	4,704.13	14,150.34	0.00	0.00	0.00
18,800.00	90.00	359.90	7,000.00	13,462.75	4,703.95	14,246.10	0.00	0.00	0.00
18,900.00	90.00	359.90	7,000.00	13,562.75	4,703.77	14,341.85	0.00	0.00	0.00
19,000.00	90.00	359.90	7,000.00	13,662.75	4,703.59	14,437.61	0.00	0.00	0.00
19,100.00	90.00	359.90	7,000.00	13,762.75	4,703.41	14,533.36	0.00	0.00	0.00
19,200.00	90.00	359.90	7,000.00	13,862.75	4,703.23	14,629.12	0.00	0.00	0.00
19,300.00	90.00	359.90	7,000.00	13,962.75	4,703.05	14,724.88	0.00	0.00	0.00
19,400.00	90.00	359.90	7,000.00	14,062.75	4,702.88	14,820.63	0.00	0.00	0.00
19,500.00	90.00	359.90	7,000.00	14,162.75	4,702.70	14,916.39	0.00	0.00	0.00
19,600.00	90.00	359.90	7,000.00	14,262.75	4,702.52	15,012.14	0.00	0.00	0.00
19,700.00	90.00	359.90	7,000.00	14,362.75	4,702.34	15,107.90	0.00	0.00	0.00
19,800.00	90.00	359.90	7,000.00	14,462.75	4,702.16	15,203.66	0.00	0.00	0.00
19,900.00	90.00	359.90	7,000.00	14,562.75	4,701.98	15,299.41	0.00	0.00	0.00
20,000.00	90.00	359.90	7,000.00	14,662.75	4,701.80	15,395.17	0.00	0.00	0.00
20,100.00	90.00	359.90	7,000.00	14,762.75	4,701.62	15,490.92	0.00	0.00	0.00
20,200.00	90.00	359.90	7,000.00	14,862.75	4,701.44	15,586.68	0.00	0.00	0.00
20,300.00	90.00	359.90	7,000.00	14,962.75	4,701.27	15,682.43	0.00	0.00	0.00
20,400.00	90.00	359.90	7,000.00	15,062.75	4,701.09	15,778.19	0.00	0.00	0.00
20,500.00	90.00	359.90	7,000.00	15,162.75	4,700.91	15,873.95	0.00	0.00	0.00
20,600.00	90.00	359.90	7,000.00	15,262.75	4,700.73	15,969.70	0.00	0.00	0.00
20,700.00	90.00	359.90	7,000.00	15,362.75	4,700.55	16,065.46	0.00	0.00	0.00
20,800.00	90.00	359.90	7,000.00	15,462.75	4,700.37	16,161.21	0.00	0.00	0.00
20,900.00	90.00	359.90	7,000.00	15,562.75	4,700.19	16,256.97	0.00	0.00	0.00
21,000.00	90.00	359.90	7,000.00	15,662.75	4,700.01	16,352.72	0.00	0.00	0.00
21,052.34	90.00	359.90	7,000.00	15,715.09	4,699.88	16,402.83	0.00	0.00	0.00
TD at 21052.34									

Design Targets									
Target Name	Dip Angle (°)	Dip Dir. (°)	TVD (usft)	+N/-S (usft)	+E/-W (usft)	Northing (usft)	Easting (usft)	Latitude	Longitude
LP-T-BONE 22N-20-06 - hit/miss target - Shape - Point	0.00	0.00	7,000.00	4,933.38	4,719.20	1,381,473.31	3,203,635.72	40.378242°N	104.769066°W
PBHL-T-BONE 22N-20-06 - plan hits target center - Point	0.00	0.00	7,000.00	15,715.09	4,699.88	1,392,254.52	3,203,529.58	40.407838°N	104.769128°W

Civitas Resources

Planning Report

Database:	EDM	Local Co-ordinate Reference:	Well T-BONE 22N-20-06
Company:	EXTRACTION OIL & GAS	TVD Reference:	KBE 25' @ 4838.00usft
Project:	WELD COUNTY	MD Reference:	KBE 25' @ 4838.00usft
Site:	SEC 28-T5N-66W	North Reference:	True
Well:	T-BONE 22N-20-06	Survey Calculation Method:	Minimum Curvature
Wellbore:	OWB		
Design:	PROPOSAL 1		

Formations					
Measured Depth (usft)	Vertical Depth (usft)	Name	Lithology	Dip (°)	Dip Direction (°)
4,186.12	3,392.00	Base of Upper Pierre aquifer			
4,796.55	3,770.00	Larimer ("Parkman") sandstone			
4,925.74	3,850.00	Larimer ("Parkman") sandstone Base			
5,846.23	4,420.00	Terry ("Sussex") sandstone			
6,015.79	4,525.00	Terry ("Sussex") sandstone Base			
6,742.49	4,975.00	Hygiene ("Shannon") sandstone			
7,267.33	5,300.00	Hygiene ("Shannon") sandstone Base			
9,890.51	6,910.00	Sharon Springs			
10,270.61	7,000.00	Niobrara A Chalk			

Plan Annotations					
Measured Depth (usft)	Vertical Depth (usft)	Local Coordinates		Comment	
		+N/-S (usft)	+E/-W (usft)		
400.00	400.00	0.00	0.00		Start Build 2.00
2,986.97	2,649.44	763.37	779.18		Start 6716.29 hold at 2986.97 MD
9,703.25	6,808.42	4,453.99	4,546.23		Start DLS 10.00 TFO -58.85
10,270.61	7,000.00	4,933.38	4,719.20		Start 10781.73 hold at 10270.61 MD
21,052.34	7,000.00	15,715.09	4,699.88		TD at 21052.34