

- NOTES:**
- DISTANCES ARE MEASURED PERPENDICULAR TO NEAREST SECTION LINE AND ARE SHOWN ON THE SAME SIDE OF THE SECTION LINE WHERE THE WELL IS LOCATED.
 - ALL LINEAL DISTANCES SHOWN USE THE U.S. SURVEY FOOT; DEFINED AS 1 U.S. FOOT = 1200/3937 METERS.
 - THIS MAP DOES NOT REPRESENT A MONUMENTED BOUNDARY SURVEY. SIXTEENTH CORNER LOCATIONS ARE COMPUTED, UNLESS OTHERWISE NOTED.
 - BOTTOM HOLE LOCATIONS AND HORIZONTAL COMPLETION ZONE PROVIDED BY OTHERS.
 - ALL REBAR AND CAPS ARE MEASURED IN INCHES.
 - ELEVATIONS ARE BASED ON THE NORTH AMERICAN VERTICAL DATUM OF 1988 AS MEASURED BY GNSS OBSERVATIONS USING GEOID 18.

BASIS OF BEARING:
 THE EAST LINE OF THE SOUTHWEST QUARTER OF SECTION 28-T5N-R66W BEARS N00°04'23"W FOR A DISTANCE OF 2642.41' FEET BETWEEN THE SOUTH QUARTER CORNER OF SECTION 28 MONUMENTED BY A 2-1/4" PIPE WITH A 3-1/4" BRASS CAP STAMPED, "PLS 16415", AND AT THE CENTER QUARTER CORNER OF SECTION 28, MONUMENTED BY A 3/4" REBAR WITH A 3-1/4" ALUMINUM CAP STAMPED, "PLS 34995", BEING A GRID BEARING USING THE COLORADO STATE PLANE SYSTEM, NORTH ZONE, BASED ON THE NORTH AMERICAN DATUM OF 1983(2011).

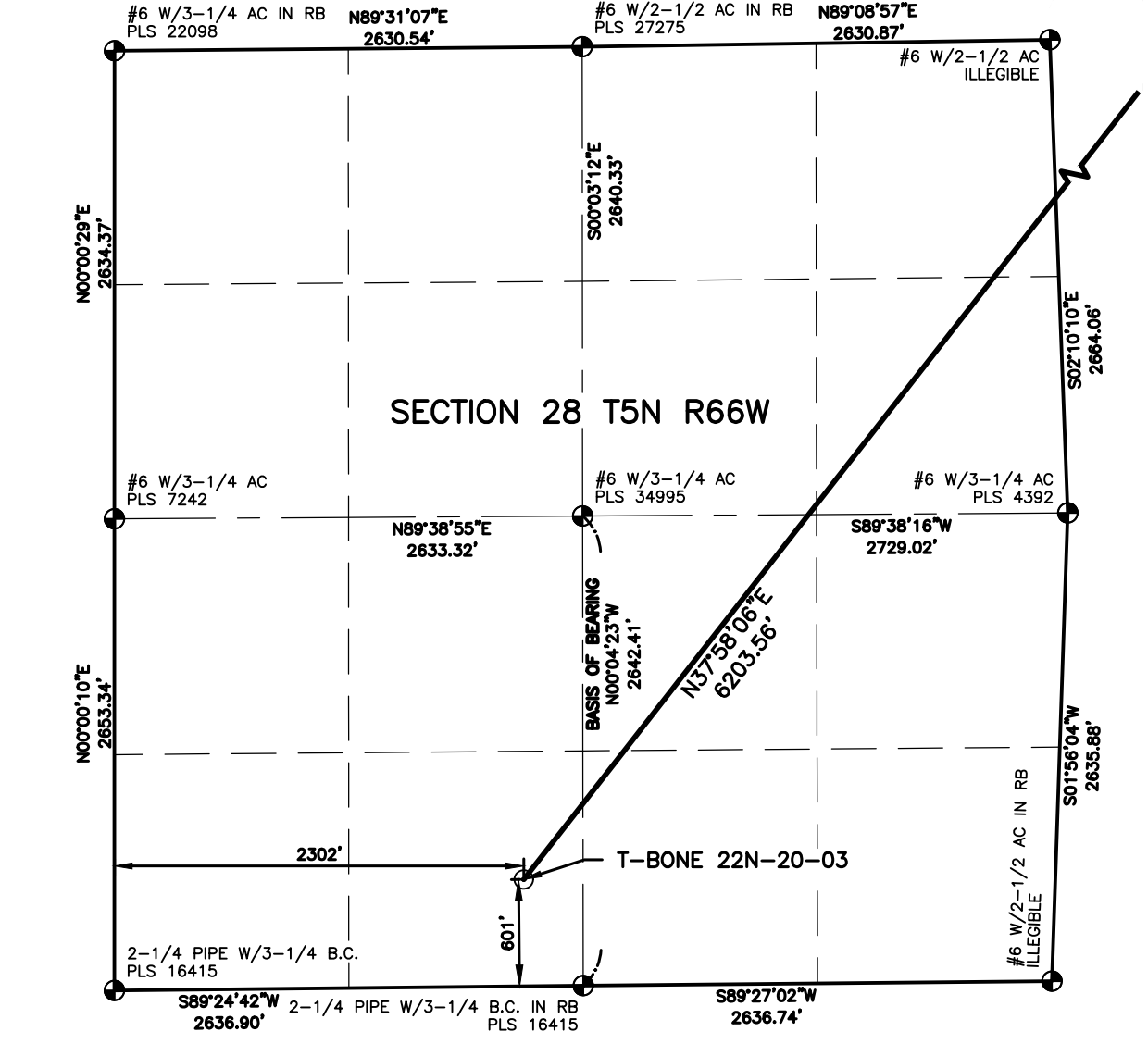
LEGEND

| | | | |
|---|-------------------------|----------|------------------------------|
| ◆ | COMPUTED ALIQUOT CORNER | ⊙ | PROPOSED WELL |
| ⊙ | ALIQUOT CORNER | A.C. | ALUMINUM CAP |
| ⊙ | BOTTOM HOLE | R.B. | RANGE BOX |
| ⊙ | ALIQUOT WITNESS CORNER | CONC. | CONCRETE |
| △ | LANDING POINT | I.C.V.B. | IRRIGATION CONTROL VALVE BOX |

LAND SURVEYOR'S CERTIFICATION
 LAMP RYNEARSON, INC. OF FT. COLLINS, COLORADO HAS, IN ACCORDANCE WITH A REQUEST FROM KALEB ROUSH OF EXTRACTION OIL AND GAS, DETERMINED THE SURFACE LOCATION OF THE WELL DESIGNATED AS T-BONE 22N-20-03 TO BE 601' FROM THE SOUTH LINE AND 2302' FROM THE WEST LINE OF SECTION 28, TOWNSHIP 5 NORTH, RANGE 66 WEST OF THE 6TH P.M., WELD COUNTY, COLORADO.



MICHAEL GERARD STRATTON COLORADO PLS 38621
 DATE OF SURVEY: 10/22/2024 (SECTION CONTROL)
 DATE OF SURVEY: 12/18/2023 (WELL LOCATION)



| SURFACE POINT | | | | LANDING POINT/BEGIN HORIZONTAL COMPLETION ZONE | | | | BOTTOM HOLE/END HORIZONTAL COMPLETION ZONE | | | |
|---------------|-----|-------|-----|--|-----|------|-----|--|-----|------|-----|
| 601' | FSL | 2302' | FWL | 160' | FSL | 859' | FWL | 350' | FSL | 858' | FWL |

| SURFACE POINT | | | | LANDING POINT | | BOTTOM HOLE | | |
|---------------|-------------|-----------|-------|---------------|-----------|-------------|-----------|-------------|
| LATITUDE | LONGITUDE | ELEVATION | PDOP | OPERATOR | LATITUDE | LONGITUDE | LATITUDE | LONGITUDE |
| 40.364908 | -104.785828 | 4812 | 1.480 | R.WARD | 40.378243 | -104.771992 | 40.407783 | -104.772053 |

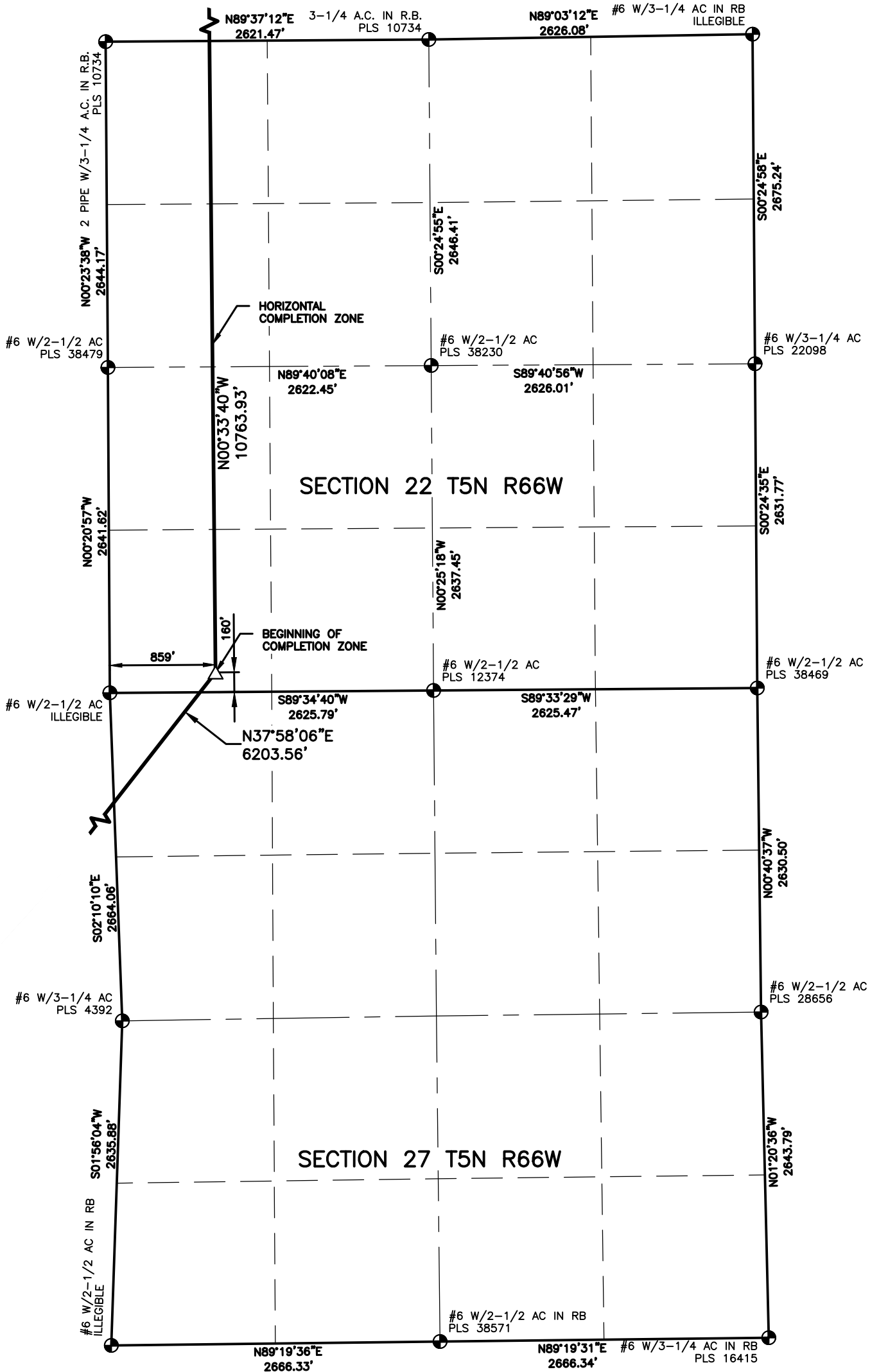
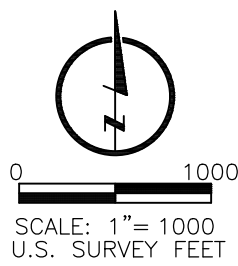
| | | |
|--|--|---|
| LAMP RYNEARSON LAMP RYNEARSON.COM | OMAHA, NEBRASKA 14710 W. DODGE RD., STE. 100 (402)496-2498 FORT COLLINS, COLORADO 4715 PINEAVENUE DR., STE. 100 (970)228-0342 KANSAS CITY, MISSOURI 9001 STATE LINE RD., STE. 200 (816)351-0440 | DESIGNER / DRAFTER JOSH CROAK REVIEWER MICHAEL STRATTON PROJECT NUMBER 0221023 DATE 02/08/2025 SURFACE LOCATION SE4, SW4, S28, T5N, R66W BOOK AND PAGE |
| | CIVITAS EXTRACTION OIL AND GAS | |

WELL LOCATION PLAT

EXTRACTION OIL AND GAS

T-BONE 22N-20-03

L:\Engineering\0221023\01_X06_T Bone 22N-20-03.dwg, 2/7/2025 11:47:18 AM, JOSHUA A. CROAK, LAMP RYNEARSON



NOTES:

1. DISTANCES ARE MEASURED PERPENDICULAR TO NEAREST SECTION LINE AND ARE SHOWN ON THE SAME SIDE OF THE SECTION LINE WHERE THE WELL IS LOCATED.
2. ALL LINEAL DISTANCES SHOWN USE THE U.S. SURVEY FOOT; DEFINED AS 1 U.S. FOOT = 1200/3937 METERS.
3. THIS MAP DOES NOT REPRESENT A MONUMENTED BOUNDARY SURVEY. SIXTEENTH CORNER LOCATIONS ARE COMPUTED, UNLESS OTHERWISE NOTED.
4. BOTTOM HOLE LOCATIONS AND HORIZONTAL COMPLETION ZONE PROVIDED BY OTHERS.
5. ALL REBAR AND CAPS ARE MEASURED IN INCHES.
6. ELEVATIONS ARE BASED ON THE NORTH AMERICAN VERTICAL DATUM OF 1988 AS MEASURED BY GNSS OBSERVATIONS USING GEOID 18.

BASIS OF BEARING:

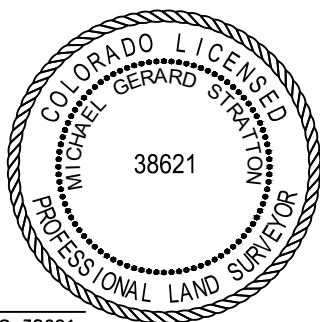
THE EAST LINE OF THE SOUTHWEST QUARTER OF SECTION 28-T5N-R66W BEARS N00°04'23"W FOR A DISTANCE OF 2642.41' FEET BETWEEN THE SOUTH QUARTER CORNER OF SECTION 28 MONUMENTED BY A 2-1/4" PIPE WITH A 3-1/4" BRASS CAP STAMPED, "PLS 16415", AND AT THE CENTER QUARTER CORNER OF SECTION 28, MONUMENTED BY A 3/4" REBAR WITH A 3-1/4" ALUMINUM CAP STAMPED, "PLS 34995", BEING A GRID BEARING USING THE COLORADO STATE PLANE SYSTEM, NORTH ZONE, BASED ON THE NORTH AMERICAN DATUM OF 1983(2011).

LEGEND

- ◆ COMPUTED ALIQUOT CORNER
- ⊕ ALIQUOT CORNER
- ⊙ BOTTOM HOLE
- ⊙^{WC} ALIQUOT WITNESS CORNER
- △ LANDING POINT
- ⊙ PROPOSED WELL
- A.C. ALUMINUM CAP
- R.B. RANGE BOX
- CONC. CONCRETE
- I.C.V.B. IRRIGATION CONTROL VALVE BOX

LAND SURVEYOR'S CERTIFICATION

LAMP RYNEARSON, INC. OF FT. COLLINS, COLORADO HAS, IN ACCORDANCE WITH A REQUEST FROM KALEB ROUSH OF EXTRACTION OIL AND GAS, DETERMINED THE SURFACE LOCATION OF THE WELL DESIGNATED AS T-BONE 22N-20-03 TO BE 601' FROM THE SOUTH LINE AND 2302' FROM THE WEST LINE OF SECTION 28, TOWNSHIP 5 NORTH, RANGE 66 WEST OF THE 6TH P.M., WELD COUNTY, COLORADO.



MICHAEL GERARD STRATTON COLORADO PLS 38621
DATE OF SURVEY: 10/22/2024 (SECTION CONTROL)
DATE OF SURVEY: 12/18/2023 (WELL LOCATION)

| SURFACE POINT | | | LANDING POINT/BEGIN HORIZONTAL COMPLETION ZONE | | | | BOTTOM HOLE/END HORIZONTAL COMPLETION ZONE | | | | |
|---------------|-----|-------|--|------|-----|------|--|------|-----|------|-----|
| 601' | FSL | 2302' | FWL | 160' | FSL | 859' | FWL | 350' | FSL | 858' | FWL |

| SURFACE POINT | | | | | LANDING POINT | | BOTTOM HOLE | |
|---------------|-------------|-----------|-------|----------|---------------|-------------|-------------|-------------|
| LATITUDE | LONGITUDE | ELEVATION | PDOP | OPERATOR | LATITUDE | LONGITUDE | LATITUDE | LONGITUDE |
| 40.364908 | -104.785828 | 4812 | 1.480 | R.WARD | 40.378243 | -104.771992 | 40.407783 | -104.772053 |

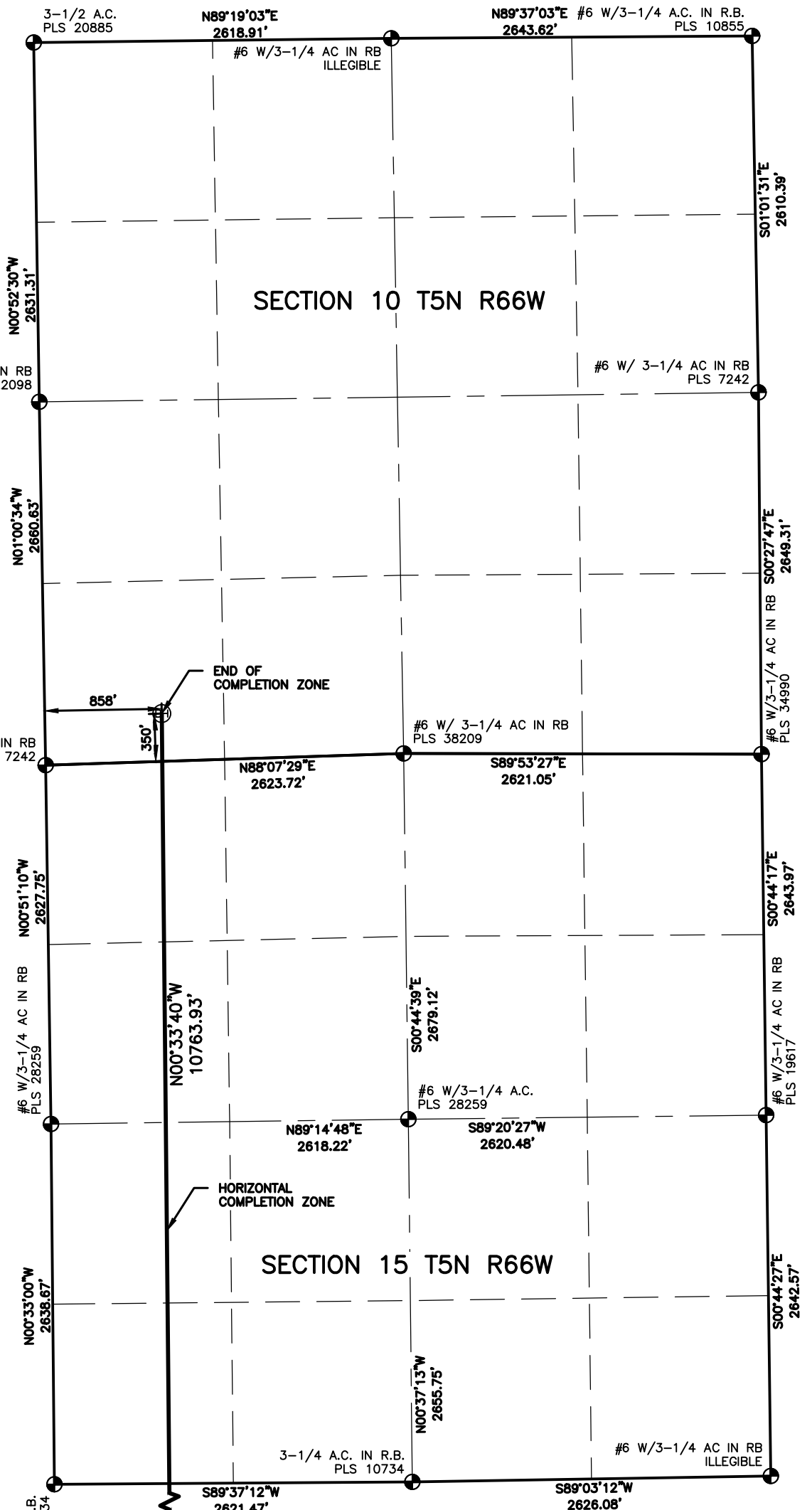
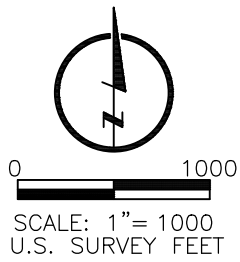
LAMP RYNEARSON

OMAHA, NEBRASKA
14710 W. DODGE RD., STE. 100 (402)496-2498
FORT COLLINS, COLORADO
4715 INNOVATION DR., STE. 100 (970)228-0342
KANSAS CITY, MISSOURI
9001 STATE LINE RD., STE. 200 (816)351-0440

DESIGNER / DRAFTER
JOSH CROAK
REVIEWER
MICHAEL STRATTON
PROJECT NUMBER
0221023
DATE
02/08/2025
SURFACE LOCATION
SE4, SW4, S28, T5N, R66W
BOOK AND PAGE

WELL LOCATION PLAT
EXTRACTION OIL AND GAS
T-BONE 22N-20-03





NOTES:

- DISTANCES ARE MEASURED PERPENDICULAR TO NEAREST SECTION LINE AND ARE SHOWN ON THE SAME SIDE OF THE SECTION LINE WHERE THE WELL IS LOCATED.
- ALL LINEAL DISTANCES SHOWN USE THE U.S. SURVEY FOOT; DEFINED AS 1 U.S. FOOT = 1200/3937 METERS.
- THIS MAP DOES NOT REPRESENT A MONUMENTED BOUNDARY SURVEY. SIXTEENTH CORNER LOCATIONS ARE COMPUTED, UNLESS OTHERWISE NOTED.
- BOTTOM HOLE LOCATIONS AND HORIZONTAL COMPLETION ZONE PROVIDED BY OTHERS.
- ALL REBAR AND CAPS ARE MEASURED IN INCHES.
- ELEVATIONS ARE BASED ON THE NORTH AMERICAN VERTICAL DATUM OF 1988 AS MEASURED BY GNSS OBSERVATIONS USING GEOID 18.

BASIS OF BEARING:

THE EAST LINE OF THE SOUTHWEST QUARTER OF SECTION 28-T5N-R66W BEARS N00°04'23"W FOR A DISTANCE OF 2642.41' FEET BETWEEN THE SOUTH QUARTER CORNER OF SECTION 28 MONUMENTED BY A 2-1/4" PIPE WITH A 3-1/4" BRASS CAP STAMPED, "PLS 16415", AND AT THE CENTER QUARTER CORNER OF SECTION 28, MONUMENTED BY A 3/4" REBAR WITH A 3-1/4" ALUMINUM CAP STAMPED, "PLS 34995", BEING A GRID BEARING USING THE COLORADO STATE PLANE SYSTEM, NORTH ZONE, BASED ON THE NORTH AMERICAN DATUM OF 1983(2011).

LEGEND

- ◆ COMPUTED ALIQUOT CORNER
- ⊙ PROPOSED WELL
- ⊕ ALIQUOT CORNER
- A.C. ALUMINUM CAP
- ⊖ BOTTOM HOLE
- R.B. RANGE BOX
- ⊙^{MC} ALIQUOT WITNESS CORNER
- CONC. CONCRETE
- △ LANDING POINT
- I.C.V.B. IRRIGATION CONTROL VALVE BOX

LAND SURVEYOR'S CERTIFICATION

LAMP RYNEARSON, INC. OF FT. COLLINS, COLORADO HAS, IN ACCORDANCE WITH A REQUEST FROM KALEB ROUSH OF EXTRACTION OIL AND GAS, DETERMINED THE SURFACE LOCATION OF THE WELL DESIGNATED AS T-BONE 22N-20-03 TO BE 601' FROM THE SOUTH LINE AND 2302' FROM THE WEST LINE OF SECTION 28, TOWNSHIP 5 NORTH, RANGE 66 WEST OF THE 6TH P.M., WELD COUNTY, COLORADO.



MICHAEL GERARD STRATTON COLORADO PLS 38621
 DATE OF SURVEY: 10/22/2024 (SECTION CONTROL)
 DATE OF SURVEY: 12/18/2023 (WELL LOCATION)

| SURFACE POINT | | | | LANDING POINT/BEGIN HORIZONTAL COMPLETION ZONE | | | | BOTTOM HOLE/END HORIZONTAL COMPLETION ZONE | | | |
|---------------|-----|-------|-----|--|-----|------|-----|--|-----|------|-----|
| 601' | FSL | 2302' | FWL | 160' | FSL | 859' | FWL | 350' | FSL | 858' | FWL |

| SURFACE POINT | | | | | LANDING POINT | | BOTTOM HOLE | |
|---------------|-------------|-----------|-------|----------|---------------|-------------|-------------|-------------|
| LATITUDE | LONGITUDE | ELEVATION | PDOP | OPERATOR | LATITUDE | LONGITUDE | LATITUDE | LONGITUDE |
| 40.364908 | -104.785828 | 4812 | 1.480 | R.WARD | 40.378243 | -104.771992 | 40.407783 | -104.772053 |

LAMP RYNEARSON

OMAHA, NEBRASKA
 14710 W. DODGE RD., STE. 100 (402)496-2498
 FORT COLLINS, COLORADO
 4715 PINEHURST DR., STE. 100 (970)223-0342
 KANSAS CITY, MISSOURI
 9001 STATE LINE RD., STE. 200 (816)351-0440

DESIGNER / DRAFTER
JOSH CROAK
 REVIEWER
MICHAEL STRATTON
 PROJECT NUMBER
0221023
 DATE
02/08/2025
 SURFACE LOCATION
SE4, SW4, S28, T5N, R66W
 BOOK AND PAGE

WELL LOCATION PLAT
 EXTRACTION OIL AND GAS
 T-BONE 22N-20-03



L:\Engineering\0221023\01_X06_T Bone_ILSURVEY\DRAWINGS\EXHIBITS\WELL PLATS\T-BONE 22N-20-03.dwg, 2/7/2025 11:47:30 AM, JOSHUA A. CROAK, LAMP RYNEARSON