

- NOTES:**
- DISTANCES ARE MEASURED PERPENDICULAR TO NEAREST SECTION LINE AND ARE SHOWN ON THE SAME SIDE OF THE SECTION LINE WHERE THE WELL IS LOCATED.
  - ALL LINEAL DISTANCES SHOWN USE THE U.S. SURVEY FOOT; DEFINED AS 1 U.S. FOOT = 1200/3937 METERS.
  - THIS MAP DOES NOT REPRESENT A MONUMENTED BOUNDARY SURVEY. SIXTEENTH CORNER LOCATIONS ARE COMPUTED, UNLESS OTHERWISE NOTED.
  - BOTTOM HOLE LOCATIONS AND HORIZONTAL COMPLETION ZONE PROVIDED BY OTHERS.
  - ALL REBAR AND CAPS ARE MEASURED IN INCHES.
  - ELEVATIONS ARE BASED ON THE NORTH AMERICAN VERTICAL DATUM OF 1988 AS MEASURED BY GNSS OBSERVATIONS USING GEOID 18.

**BASIS OF BEARING:**  
 THE EAST LINE OF THE SOUTHWEST QUARTER OF SECTION 28-T5N-R66W BEARS N00°04'23"W FOR A DISTANCE OF 2642.41' FEET BETWEEN THE SOUTH QUARTER CORNER OF SECTION 28 MONUMENTED BY A 2-1/4" PIPE WITH A 3-1/4" BRASS CAP STAMPED, "PLS 16415", AND AT THE CENTER QUARTER CORNER OF SECTION 28, MONUMENTED BY A 3/4" REBAR WITH A 3-1/4" ALUMINUM CAP STAMPED, "PLS 34995", BEING A GRID BEARING USING THE COLORADO STATE PLANE SYSTEM, NORTH ZONE, BASED ON THE NORTH AMERICAN DATUM OF 1983(2011).

**LEGEND**

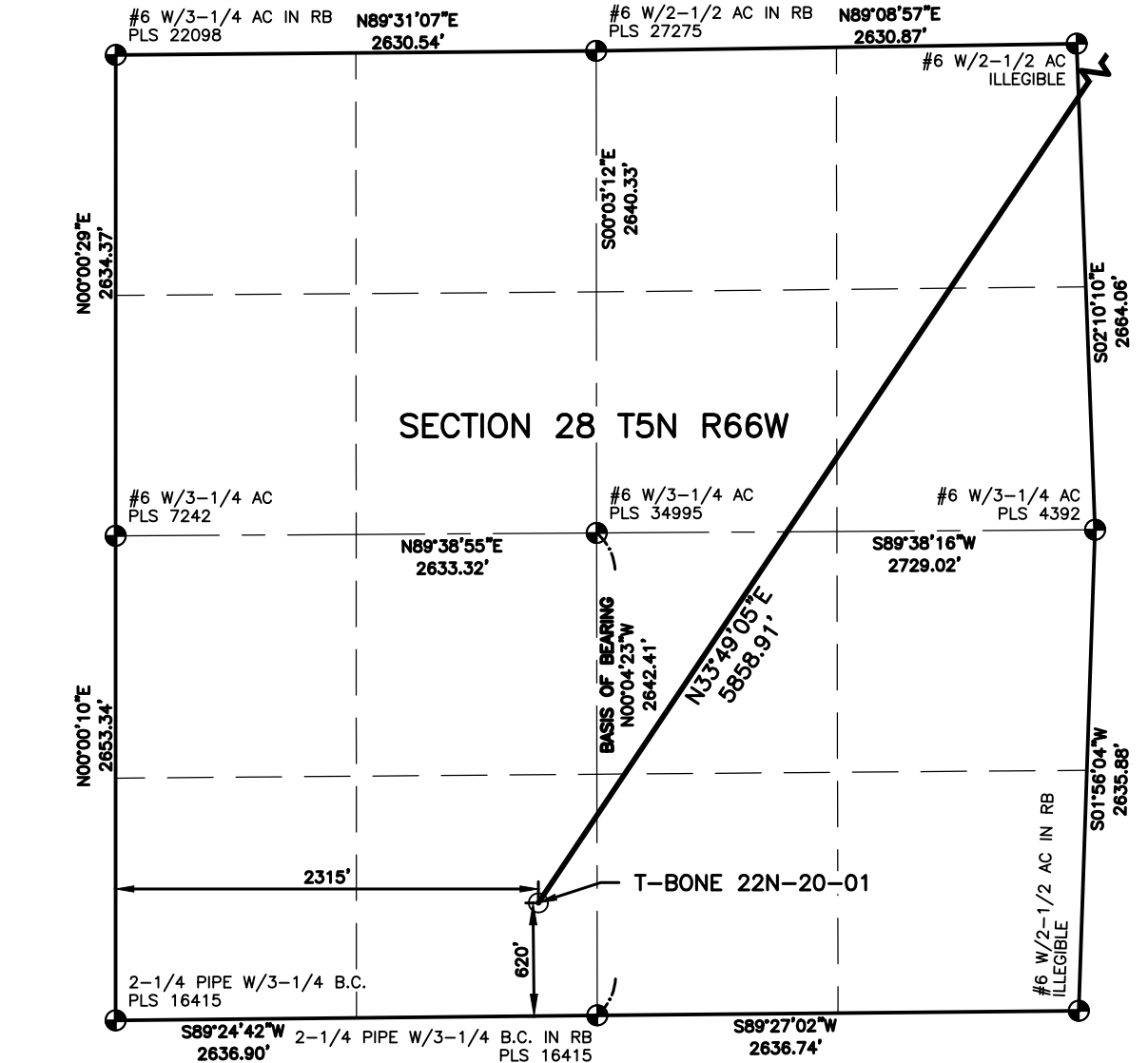
- ◆ COMPUTED ALIQUOT CORNER
- ⊙ PROPOSED WELL
- ⊕ ALIQUOT CORNER
- A.C. ALUMINUM CAP
- ⊖ BOTTOM HOLE
- R.B. RANGE BOX
- ⊙<sup>WC</sup> ALIQUOT WITNESS CORNER
- CONC. CONCRETE
- △ LANDING POINT
- I.C.V.B. IRRIGATION CONTROL VALVE BOX

**LAND SURVEYOR'S CERTIFICATION**

LAMP RYNEARSON, INC. OF FT. COLLINS, COLORADO HAS, IN ACCORDANCE WITH A REQUEST FROM KALEB ROUSH OF EXTRACTION OIL AND GAS, DETERMINED THE SURFACE LOCATION OF THE WELL DESIGNATED AS T-BONE 22N-20-01 TO BE 620' FROM THE SOUTH LINE AND 2315' FROM THE WEST LINE OF SECTION 28, TOWNSHIP 5 NORTH, RANGE 66 WEST OF THE 6TH P.M., WELD COUNTY, COLORADO.



MICHAEL GERARD STRATTON COLORADO PLS 38621  
 DATE OF SURVEY: 10/22/2024 (SECTION CONTROL)  
 DATE OF SURVEY: 12/18/2023 (WELL LOCATION)



SURFACE POINT				LANDING POINT/BEGIN HORIZONTAL COMPLETION ZONE				BOTTOM HOLE/END HORIZONTAL COMPLETION ZONE			
620'	FSL	2315'	FWL	160'	FSL	315'	FWL	350'	FSL	315'	FWL

SURFACE POINT					LANDING POINT		BOTTOM HOLE	
LATITUDE	LONGITUDE	ELEVATION	PDOP	OPERATOR	LATITUDE	LONGITUDE	LATITUDE	LONGITUDE
40.364959	-104.785784	4812	1.481	R.WARD	40.378245	-104.773943	40.407746	-104.774003

**LAMP RYNEARSON**

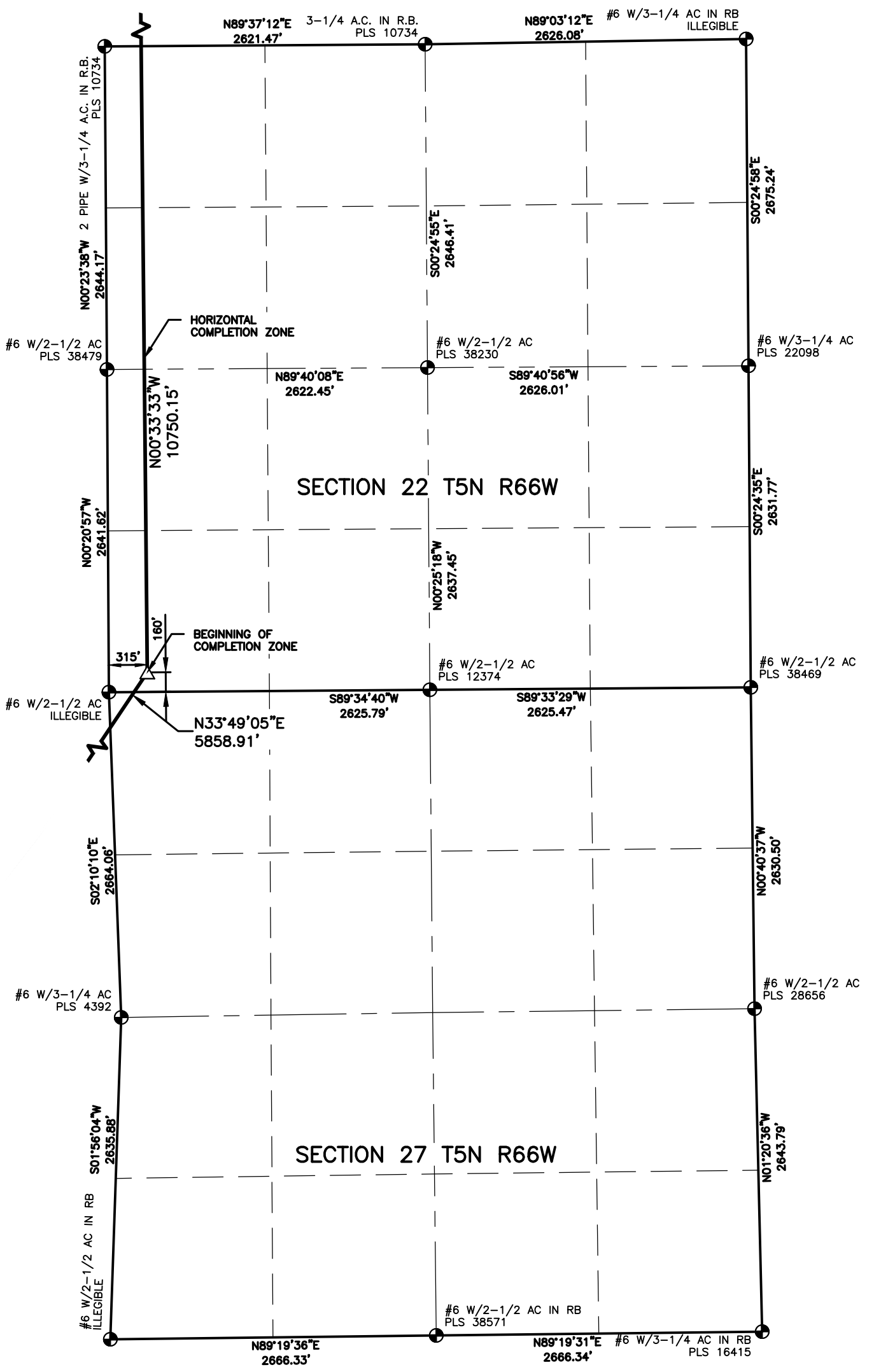
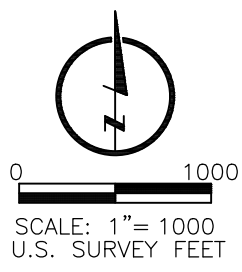
OMAHA, NEBRASKA  
 14710 W. DODGE RD., STE. 100 (402)496-2498  
 FORT COLLINS, COLORADO  
 4715 INNOVATION DR., STE. 100 (970)223-0342  
 KANSAS CITY, MISSOURI  
 9001 STATE LINE RD., STE. 200 (816)351-0440

DESIGNER / DRAFTER  
**JOSH CROAK**  
 REVIEWER  
**MICHAEL STRATTON**  
 PROJECT NUMBER  
**0221023**  
 DATE  
**02/08/2025**  
 SURFACE LOCATION  
**SE4, SW4, S28, T5N, R66W**  
 BOOK AND PAGE

**WELL LOCATION PLAT**  
 EXTRACTION OIL AND GAS  
 T-BONE 22N-20-01



L:\Engineering\0221023\01\_X06\_T Bone 22N-20-01.dwg, 2/7/2025 11:46:35 AM, JOSHUA A. CROAK, LAMP RYNEARSON



- NOTES:**
1. DISTANCES ARE MEASURED PERPENDICULAR TO NEAREST SECTION LINE AND ARE SHOWN ON THE SAME SIDE OF THE SECTION LINE WHERE THE WELL IS LOCATED.
  2. ALL LINEAL DISTANCES SHOWN USE THE U.S. SURVEY FOOT; DEFINED AS 1 U.S. FOOT = 1200/3937 METERS.
  3. THIS MAP DOES NOT REPRESENT A MONUMENTED BOUNDARY SURVEY. SIXTEENTH CORNER LOCATIONS ARE COMPUTED, UNLESS OTHERWISE NOTED.
  4. BOTTOM HOLE LOCATIONS AND HORIZONTAL COMPLETION ZONE PROVIDED BY OTHERS.
  5. ALL REBAR AND CAPS ARE MEASURED IN INCHES.
  6. ELEVATIONS ARE BASED ON THE NORTH AMERICAN VERTICAL DATUM OF 1988 AS MEASURED BY GNSS OBSERVATIONS USING GEOID 18.

**BASIS OF BEARING:**  
 THE EAST LINE OF THE SOUTHWEST QUARTER OF SECTION 28-T5N-R66W BEARS N00°04'23"W FOR A DISTANCE OF 2642.41' FEET BETWEEN THE SOUTH QUARTER CORNER OF SECTION 28 MONUMENTED BY A 2-1/4" PIPE WITH A 3-1/4" BRASS CAP STAMPED, "PLS 16415", AND AT THE CENTER QUARTER CORNER OF SECTION 28, MONUMENTED BY A 3/4" REBAR WITH A 3-1/4" ALUMINUM CAP STAMPED, "PLS 34995", BEING A GRID BEARING USING THE COLORADO STATE PLANE SYSTEM, NORTH ZONE, BASED ON THE NORTH AMERICAN DATUM OF 1983(2011).

**LEGEND**

◆	COMPUTED ALIQUOT CORNER	⊙	PROPOSED WELL
⊕	ALIQUOT CORNER	A.C.	ALUMINUM CAP
⊖	BOTTOM HOLE	R.B.	RANGE BOX
⊙ <sup>WC</sup>	ALIQUOT WITNESS CORNER	CONC.	CONCRETE
△	LANDING POINT	I.C.V.B.	IRRIGATION CONTROL VALVE BOX

**LAND SURVEYOR'S CERTIFICATION**  
 LAMP RYNEARSON, INC. OF FT. COLLINS, COLORADO HAS, IN ACCORDANCE WITH A REQUEST FROM KALEB ROUSH OF EXTRACTION OIL AND GAS, DETERMINED THE SURFACE LOCATION OF THE WELL DESIGNATED AS T-BONE 22N-20-01 TO BE 620' FROM THE SOUTH LINE AND 2315' FROM THE WEST LINE OF SECTION 28, TOWNSHIP 5 NORTH, RANGE 66 WEST OF THE 6TH P.M., WELD COUNTY, COLORADO.



MICHAEL GERARD STRATTON COLORADO PLS 38621  
 DATE OF SURVEY: 10/22/2024 (SECTION CONTROL)  
 DATE OF SURVEY: 12/18/2023 (WELL LOCATION)

SURFACE POINT			LANDING POINT/BEGIN HORIZONTAL COMPLETION ZONE				BOTTOM HOLE/END HORIZONTAL COMPLETION ZONE				
620'	FSL	2315'	FWL	160'	FSL	315'	FWL	350'	FSL	315'	FWL

SURFACE POINT					LANDING POINT		BOTTOM HOLE	
LATITUDE	LONGITUDE	ELEVATION	PDOP	OPERATOR	LATITUDE	LONGITUDE	LATITUDE	LONGITUDE
40.364959	-104.785784	4812	1.481	R.WARD	40.378245	-104.773943	40.407746	-104.774003

**LAMP RYNEARSON**  
 LAMP RYNEARSON.COM

OMAHA, NEBRASKA  
 14710 W. DODGE RD., STE. 100 (402)496.2498  
 FORT COLLINS, COLORADO  
 4715 INNOVATION DR., STE. 100 (970)228.0342  
 KANSAS CITY, MISSOURI  
 9001 STATE LINE RD., STE. 200 (816)351.0440

**CIVITAS**  
 EXTRACTION OIL AND GAS

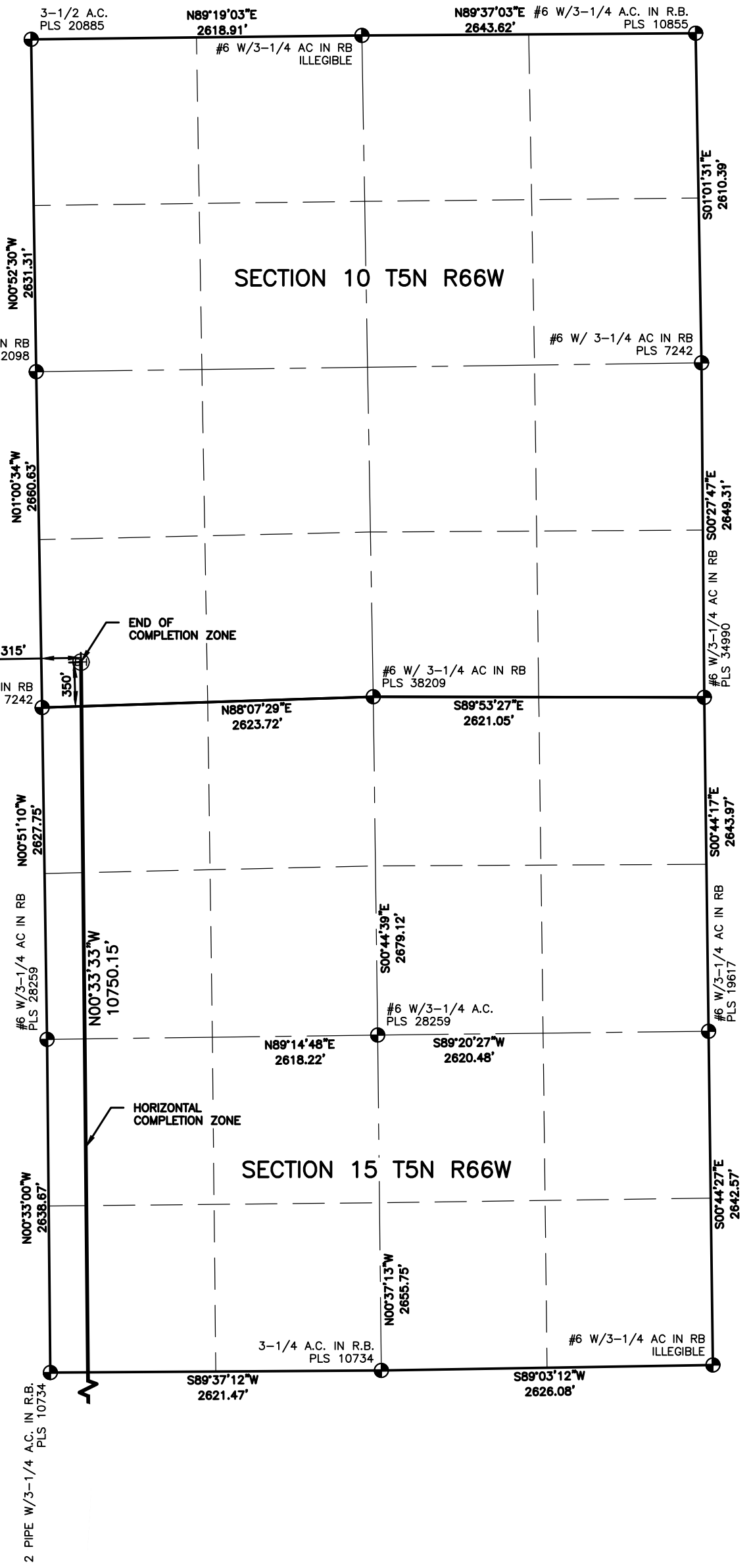
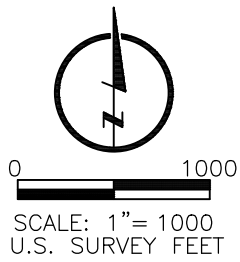
DESIGNER / DRAFTER <b>JOSH CROAK</b>
REVIEWER <b>MICHAEL STRATTON</b>
PROJECT NUMBER <b>0221023</b>
DATE <b>02/08/2025</b>
SURFACE LOCATION <b>SE4, SW4, S28, T5N, R66W</b>
BOOK AND PAGE

# WELL LOCATION PLAT

## EXTRACTION OIL AND GAS

### T-BONE 22N-20-01

L:\Engineering\0221023\01\_X06\_T Bone\_ILSURVEY\DRAWINGS\EXHIBITS\WELL PLATS\T-BONE 22N-20-01.dwg, 2/7/2025 11:46:40 AM, JOSHUA A. CROAK, LAMP RYNEARSON



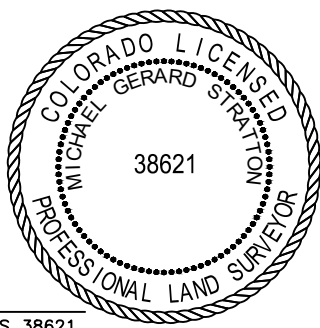
- NOTES:**
- DISTANCES ARE MEASURED PERPENDICULAR TO NEAREST SECTION LINE AND ARE SHOWN ON THE SAME SIDE OF THE SECTION LINE WHERE THE WELL IS LOCATED.
  - ALL LINEAL DISTANCES SHOWN USE THE U.S. SURVEY FOOT; DEFINED AS 1 U.S. FOOT = 1200/3937 METERS.
  - THIS MAP DOES NOT REPRESENT A MONUMENTED BOUNDARY SURVEY. SIXTEENTH CORNER LOCATIONS ARE COMPUTED, UNLESS OTHERWISE NOTED.
  - BOTTOM HOLE LOCATIONS AND HORIZONTAL COMPLETION ZONE PROVIDED BY OTHERS.
  - ALL REBAR AND CAPS ARE MEASURED IN INCHES.
  - ELEVATIONS ARE BASED ON THE NORTH AMERICAN VERTICAL DATUM OF 1988 AS MEASURED BY GNSS OBSERVATIONS USING GEOID 18.

**BASIS OF BEARING:**  
 THE EAST LINE OF THE SOUTHWEST QUARTER OF SECTION 28-T5N-R66W BEARS N00°04'23\"/>

**LEGEND**

◆	COMPUTED ALIQUOT CORNER	⊙	PROPOSED WELL
⊕	ALIQUOT CORNER	A.C.	ALUMINUM CAP
⊖	BOTTOM HOLE	R.B.	RANGE BOX
⊕ <sup>MC</sup>	ALIQUOT WITNESS CORNER	CONC.	CONCRETE
△	LANDING POINT	I.C.V.B.	IRRIGATION CONTROL VALVE BOX

**LAND SURVEYOR'S CERTIFICATION**  
 LAMP RYNEARSON, INC. OF FT. COLLINS, COLORADO HAS, IN ACCORDANCE WITH A REQUEST FROM KALEB ROUSH OF EXTRACTION OIL AND GAS, DETERMINED THE SURFACE LOCATION OF THE WELL DESIGNATED AS T-BONE 22N-20-01 TO BE 620' FROM THE SOUTH LINE AND 2315' FROM THE WEST LINE OF SECTION 28, TOWNSHIP 5 NORTH, RANGE 66 WEST OF THE 6TH P.M., WELD COUNTY, COLORADO.



MICHAEL GERARD STRATTON COLORADO PLS 38621  
 DATE OF SURVEY: 10/22/2024 (SECTION CONTROL)  
 DATE OF SURVEY: 12/18/2023 (WELL LOCATION)

SURFACE POINT				LANDING POINT/BEGIN HORIZONTAL COMPLETION ZONE				BOTTOM HOLE/END HORIZONTAL COMPLETION ZONE			
620'	FSL	2315'	FWL	160'	FSL	315'	FWL	350'	FSL	315'	FWL

SURFACE POINT					LANDING POINT		BOTTOM HOLE	
LATITUDE	LONGITUDE	ELEVATION	PDOP	OPERATOR	LATITUDE	LONGITUDE	LATITUDE	LONGITUDE
40.364959	-104.785784	4812	1.481	R.WARD	40.378245	-104.773943	40.407746	-104.774003

**LAMP RYNEARSON**

OMAHA, NEBRASKA  
 14710 W. DODGE RD., STE. 100 (402)496-2498  
 FORT COLLINS, COLORADO  
 4715 PINEAVENUE DR., STE. 100 (970)223-0342  
 KANSAS CITY, MISSOURI  
 9001 STATE LINE RD., STE. 200 (816)351-0440

DESIGNER / DRAFTER  
**JOSH CROAK**  
 REVIEWER  
**MICHAEL STRATTON**  
 PROJECT NUMBER  
**0221023**  
 DATE  
**02/08/2025**  
 SURFACE LOCATION  
**SE4, SW4, S28, T5N, R66W**  
 BOOK AND PAGE

# WELL LOCATION PLAT

## EXTRACTION OIL AND GAS

### T-BONE 22N-20-01



L:\Engineering\0221023\01\_X06\_T Bone 22N-20-01.dwg, 2/7/2025 11:46:45 AM, JOSHUA A. CROAK, LAMP RYNEARSON