

Wellhead Closure Checklist

COGCC Rule 911.a.(4) Environmental Site Closure Assessment Field Form

Additional attachments (optional):		Pit Closure <u> </u>		Tank Battery Closure <u> </u>		Flowline Closure <u> </u>		Partially Buried Vault Closure <u> </u>	
Site Name & COGCC Facility Number: Shelton R G #26-8		Date: 06/30/23					Remediation Project #: 29038		
Associated Wells: 05-123-12791		Age of Site: Years					Number of Photos Attached: 2		
Location: (GPS coordinates of wellhead or southeastern most wellhead for multiple)						40.285020 / -104.623510			
General Condition of Site: (General observations regarding housekeeping, corrosion, waste management, etc.)									
Good Condition									
USCS Soil Type: Clayey SILT					Estimated Depth to Groundwater: Approx. 6'				
Hydrocarbon Impacted Soils / Spills: (Note estimated size and if impact appears to be surficial or extends to an unknown depth)									
None observed.									
Salt Crusted Soils or Impacted Vegetation: (Note estimated size and if impact appears to be surficial or extends to an unknown depth)									
None observed.									
Wellhead(s)									
Well API	05-123-12791								
Age	Years								
Condition of surface around wellhead	Good Condition								
PID Readings	WH-N: 8.9	WH-E: 9.1	WH-S: 6.9	WH-W: 8.0					
Condition of subsurface (staining present)	Good - No Odor/Staining								
PID Readings	57.8	23.8	9.1	151.5					
Sample taken? Location/Sample ID#	WH-SS-01	WH-SS-02	WH-SS-03	WH-SS-04					
Photo Number(s)	See photolog								
Other observations regarding wellheads:									
Well casing cut/capped prior to assessment.									
Summary									
Was impacted soil identified?									
No		Yes - less than 10 cubic yards			Yes - more than 10 cubic yards				
Total number of samples field screened: 4					Total number of samples collected: 4				
Highest PID Reading: 151.5					Total number of samples submitted to lab for analysis: 4				
If more than 10 cubic yards of impacted soil were observed:									
Vertical extent:					Estimated spill volume:				
N/A									
Lateral extent:					Volume of soil removed:				
Is additional investigation required?									
Was groundwater encountered during the investigation?									
No		Yes - not impacted or in contact with impacted soils			Yes - groundwater impacted and/or in contact with impacted soils				
Measured depth to groundwater: Approx. 6'					Was remedial groundwater removal conducted? Yes No				
Date Groundwater was encountered: 06/30/23					Commencement date of removal:				
Sheen on groundwater? Yes No					Volume of groundwater removed prior to sampling:				
Free product observed? Yes No					Volume of groundwater removed post sampling: N/A				
Total number of samples collected: 1					Total Volume of groundwater removed:				
Total number of samples submitted to lab for analysis: 1									



FIGURES

Figure 1: Topographic Site Location Map

Figure 2: Aerial Site Location Map

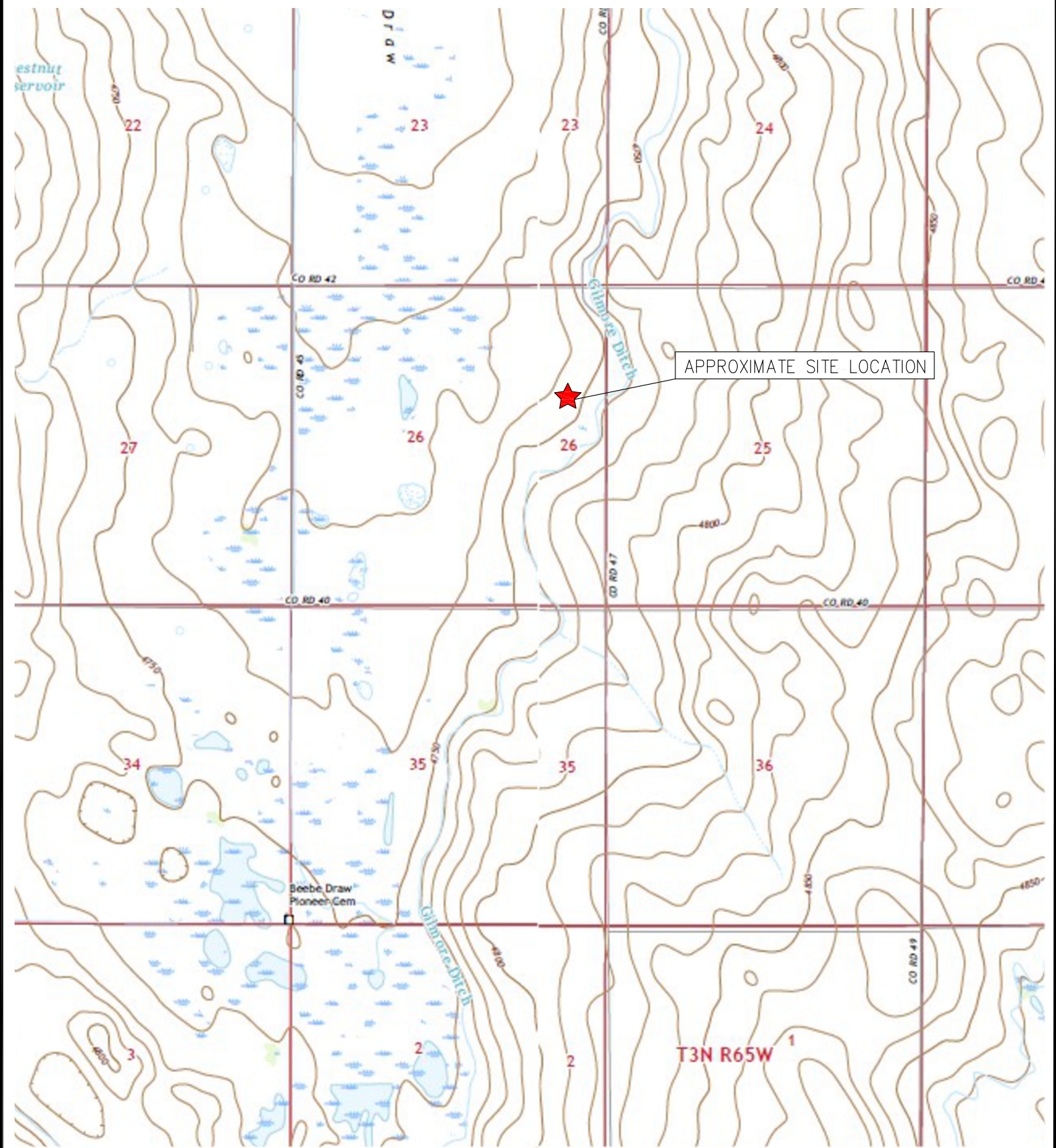
Figure 3: Soil Sample Location Map

Figure 4: Soil Analytical Map

Figure 5: Polycyclic Aromatic Hydrocarbons Map

Figure 6: Grab Groundwater Analytical Map

Figure 7: Metals in Soil Map



APPROXIMATE SITE LOCATION



TOPOGRAPHIC SITE LOCATION MAP
 SHELTON R G #26-8
 CLOSURE ASSESSMENT
 40.285020 / -104.623510
 SE¼ NE¼ SEC.26 T4N R65W 6PM
 WELD COUNTY, COLORADO
 API # 05-123-12791
 REMEDIATION # 29038



EAGLE
 ENVIRONMENTAL
 CONSULTING, LLC

8000 W 44th Ave, Wheat Ridge, CO 80033
 Ph: 303-433-0479 • F: 303-325-5449



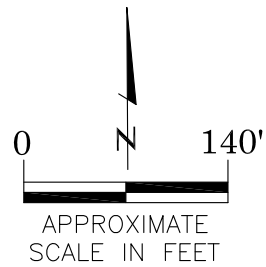
SOURCE: USGS 7.5 MINUTE TOPOGRAPHIC MAP,
 VALLEY VIEW SCHOOL AND LA SALLE, CO
 QUADRANGLES 2022

FIGURE NO. 1



LEGEND

- FORMER SHELTON R G #26-8 WELLHEAD (PLUGGED AND ABANDONED)
- ASSOCIATED SEPARATOR
- APPROXIMATE FLOWLINE LOCATION



AERIAL SITE LOCATION MAP
 SHELTON R G #26-8
 CLOSURE ASSESSMENT
 40.285020 / -104.623510
 SE¼ NE¼ SEC.26 T4N R65W 6PM
 WELD COUNTY, COLORADO
 API # 05-123-12791
 REMEDIATION # 29038

FIGURE NO.

2

DRAWN BY:

JF



EAGLE
 ENVIRONMENTAL
 CONSULTING, LLC

8000 W 44th Ave, Wheat Ridge, CO 80033
 Ph: 303-433-0479 • F: 303-325-5449



LEGEND

- — WELLHEAD ASSESSMENT BOUNDARIES
- SS-02 APPROXIMATE LOCATION OF SOIL SAMPLES SUBMITTED FOR LABORATORY ANALYSIS
- SS-02 APPROXIMATE LOCATION OF SOIL SAMPLES FIELD SCREENED, ONLY, WITH PHOTOIONIZATION DETECTOR

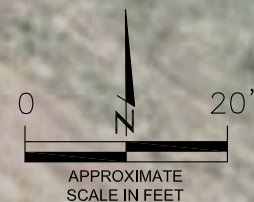
SOIL SAMPLE LOCATION MAP
 SHELTON R G #26-8
 CLOSURE ASSESSMENT
 40.285020 / -104.623510
 SE¼ NE¼ SEC.26 T4N R65W 6PM
 WELD COUNTY, COLORADO
 API # 05-123-12791
 REMEDIATION # 29038

FIGURE NO.
3

DRAWN BY:
JF



EAGLE
 ENVIRONMENTAL
 CONSULTING, LLC
 8000 W 44th Ave, Wheat Ridge, CO 80033
 Ph: 303-433-0479 • F: 303-325-5449



LEGEND

- WELLHEAD ASSESSMENT BOUNDARIES
- APPROXIMATE LOCATION OF SOIL SAMPLES SUBMITTED FOR LABORATORY ANALYSIS

PARAMETERS

SAMPLE LOCATION	
DATE	
DEPTH (FEET)	
B	= BENZENE (mg/kg)
T	= TOLUENE (mg/kg)
E	= ETHYLBENZENE (mg/kg)
X	= TOTAL XYLENES (mg/kg)
N	= NAPHTHALENE (mg/kg)
G	= TPH-GRO (mg/kg)
D	= TPH-DRO (mg/kg)
R	= TPH-RRO (mg/kg)
1,2,4-TMB	= 1,2,4 TRIMETHYLBENZENE (mg/kg)
1,3,5-TMB	= 1,3,5 TRIMETHYLBENZENE (mg/kg)
Brn	= BORON (mg/L)
EC	= SPECIFIC CONDUCTANCE (mmhos/cm)
SAR	= SODIUM ADSORPTION RATIO
pH	= pH (pH UNITS)

mg/kg = MILLIGRAMS PER KILOGRAM
 mg/L = MILLIGRAMS PER LITER
 mmhos/cm = MILLIMHOS PER CENTIMETER

TPH-GRO = TOTAL PETROLEUM HYDROCARBONS - GASOLINE RANGE ORGANICS
 TPH-DRO = TOTAL PETROLEUM HYDROCARBONS - DIESEL RANGE ORGANICS
 TPH-RRO = TOTAL PETROLEUM HYDROCARBONS - RESIDUAL RANGE ORGANICS

NOTES:
 LABORATORY RERUNS WERE COMPLETED AS APPLICABLE ON SAMPLES WITH SOIL SUITABILITY VALUES OUTSIDE OF ECMC TABLE 915-1 REGULATORY RANGE. RESULTS OF THE RERUNS ARE PRESENTED IN PARENTHESES.

VALUES PRESENTED WITH A LESS THAN SYMBOL (<) DID NOT CONTAIN CONCENTRATIONS AT OR ABOVE LABORATORY DETECTION LIMITS.

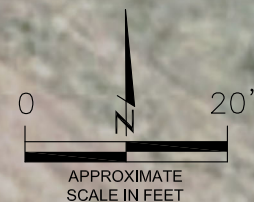
VALUES PRESENTED IN **BOLD** EXCEED ECMC TABLE 915-1 REGULATORY LIMITS.

ECMC = ENERGY & CARBON MANAGEMENT COMMISSION

SOIL ANALYTICAL MAP
 SHELTON R G #26-8
 CLOSURE ASSESSMENT
 40.285020 / -104.623510
 SE¼ NE¼ SEC.26 T4N R65W 6PM
 WELD COUNTY, COLORADO
 API # 05-123-12791
 REMEDIATION # 29038

FIGURE NO.
4

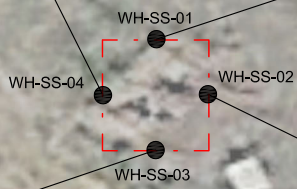
DRAWN BY:
JF



WH-SS-04@5'
 06/30/23
 5'
 B = <0.00200
 T = <0.00200
 E = <0.00200
 X = <0.00200
 N = <0.00380
 G = <0.200
 D = <25.0
 R = <100
 1,2,4-TMB = <0.00200
 1,3,5-TMB = 0.00238
 Brn= 0.649
 EC = 0.972
 SAR= **9.78**
 pH = **8.51** (8.30/8.30)

BACKGROUND-01@2'
 06/30/23
 2'
 SAR= **9.98**
 pH = **8.52**

WH-SS-01@5'
 06/30/23
 5'
 B = <0.00200
 T = <0.00200
 E = <0.00200
 X = <0.00200
 N = <0.00380
 G = 1.33
 D = 32.7
 R = <100
 1,2,4-TMB = <0.00200
 1,3,5-TMB = 0.00660
 Brn= 1.66
 EC = 1.29
 SAR= 5.47
 pH = 8.29



WH-SS-03@5'
 06/30/23
 5'
 B = <0.00200
 T = <0.00200
 E = <0.00200
 X = <0.00200
 N = <0.00380
 G = <0.200
 D = <25.0
 R = <100
 1,2,4-TMB = <0.00200
 1,3,5-TMB = <0.00200
 Brn= 1.09
 EC = 0.689
 SAR= 1.90
 pH = 8.21

WH-SS-02@5'
 06/30/23
 5'
 B = <0.00200
 T = <0.00200
 E = <0.00200
 X = <0.00200
 N = <0.00380
 G = <0.200
 D = 99.1
 R = 275
 1,2,4-TMB = <0.00200
 1,3,5-TMB = <0.00200
 Brn= 1.99
 EC = 1.06
 SAR= 4.81
 pH = **8.46** (8.15/8.18)

LEGEND

- WELLHEAD ASSESSMENT BOUNDARIES
- APPROXIMATE LOCATION OF SOIL SAMPLES SUBMITTED FOR LABORATORY ANALYSIS

PARAMETERS

SAMPLE LOCATION
DATE SAMPLE COLLECTED
APPROXIMATE DEPTH

POLYCYCLIC AROMATIC HYDROCARBONS (PAHs) (mg/kg)

mg/kg = MILLIGRAMS PER KILOGRAM

NOTES:

VALUES PRESENTED WITH A LESS THAN SYMBOL (<) DID NOT CONTAIN CONCENTRATIONS AT OR ABOVE LABORATORY DETECTION LIMITS.

VALUES PRESENTED IN **BOLD** EXCEED ECMC TABLE 915-1 REGULATORY LIMITS.

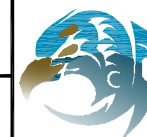
ECMC = ENERGY & CARBON MANAGEMENT COMMISSION

POLYCYCLIC AROMATIC HYDROCARBONS MAP

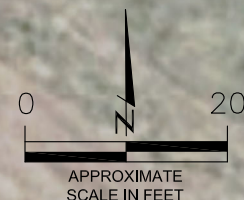
SHELTON R G #26-8
CLOSURE ASSESSMENT
40.285020 / -104.623510
SE¼ NE¼ SEC.26 T4N R65W 6PM
WELD COUNTY, COLORADO
API # 05-123-12791
REMEDIAION # 29038

FIGURE NO.
5

DRAWN BY:
JF



EAGLE
ENVIRONMENTAL
CONSULTING, LLC
8000 W 44th Ave, Wheat Ridge, CO 80033
Ph: 303-433-0479 • F: 303-325-5449

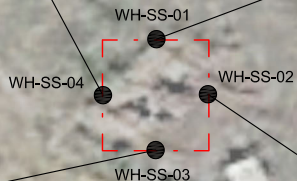


WH-SS-04@5'
06/30/23
5'

1-Methylnaphthalene = <0.00201
2-Methylnaphthalene = <0.00201
Acenaphthene = <0.00067
Anthracene = <0.00067
Benzo(a)anthracene = <0.00067
Benzo(a)pyrene = <0.00067
Benzo(b)fluoranthene = <0.00067
Benzo(k)fluoranthene = <0.00067
Chrysene = <0.00067
Dibenzo(a,h)anthracene = <0.00067
Fluoranthene = <0.00067
Fluorene = <0.00067
Indeno(1,2,3-CD)pyrene = <0.00067
Pyrene = <0.00067

WH-SS-01@5'
06/30/23
5'

1-Methylnaphthalene = 0.00383
2-Methylnaphthalene = 0.00634
Acenaphthene = 0.000693
Anthracene = <0.00067
Benzo(a)anthracene = <0.00067
Benzo(a)pyrene = <0.00067
Benzo(b)fluoranthene = <0.00067
Benzo(k)fluoranthene = <0.00067
Chrysene = 0.00122
Dibenzo(a,h)anthracene = <0.00067
Fluoranthene = <0.00067
Fluorene = 0.00126
Indeno(1,2,3-CD)pyrene = <0.00067
Pyrene = <0.00067



WH-SS-03@5'
06/30/23
5'

1-Methylnaphthalene = <0.00201
2-Methylnaphthalene = <0.00201
Acenaphthene = <0.00067
Anthracene = <0.00067
Benzo(a)anthracene = <0.00067
Benzo(a)pyrene = <0.00067
Benzo(b)fluoranthene = <0.00067
Benzo(k)fluoranthene = <0.00067
Chrysene = <0.00067
Dibenzo(a,h)anthracene = <0.00067
Fluoranthene = <0.00067
Fluorene = <0.00067
Indeno(1,2,3-CD)pyrene = <0.00067
Pyrene = <0.00067

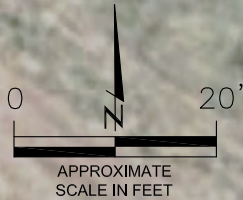
WH-SS-02@5'
06/30/23
5'

1-Methylnaphthalene = 0.00121
2-Methylnaphthalene = 0.00195
Acenaphthene = <0.00067
Anthracene = <0.00067
Benzo(a)anthracene = <0.00067
Benzo(a)pyrene = <0.00067
Benzo(b)fluoranthene = 0.000842
Benzo(k)fluoranthene = <0.00067
Chrysene = 0.000853
Dibenzo(a,h)anthracene = 0.000798
Fluoranthene = <0.00067
Fluorene = <0.00067
Indeno(1,2,3-CD)pyrene = 0.000733
Pyrene = <0.00067



GW-01

GW-01
 06/30/23
 B = **21.9**
 T = 102
 E = 23.1
 X = 316
 N = <2.00
 1,2,4-TMB = 36.3
 1,3,5-TMB = 22.8



LEGEND

--- WELLHEAD ASSESSMENT BOUNDARIES

● APPROXIMATE LOCATION OF GRAB GROUNDWATER SAMPLE SUBMITTED FOR LABORATORY ANALYSIS

PARAMETERS

GROUNDWATER SAMPLE LOCATION
 DATE
 B = BENZENE (µg/L)
 T = TOLUENE (µg/L)
 E = ETHYLBENZENE (µg/L)
 X = TOTAL XYLENES (µg/L)
 N = NAPHTHALENE (µg/L)
 1,2,4-TMB = 1,2,4-TRIMETHYLBENZENE (µg/L)
 1,3,5-TMB = 1,3,5-TRIMETHYLBENZENE (µg/L)

µg/L = MICROGRAMS PER LITER

NOTES:
 VALUES PRESENTED WITH A LESS THAN SYMBOL (<) DID NOT CONTAIN CONCENTRATIONS AT OR ABOVE THE LABORATORY REPORTING LIMIT.

VALUES PRESENTED IN **BOLD** EXCEED THE ECMC TABLE 915-1 REGULATORY LIMITS FOR THAT COMPOUND.

ECMC = ENERGY & CARBON MANAGEMENT COMMISSION

GRAB GROUNDWATER ANALYTICAL MAP
 SHELTON R G #26-8
 CLOSURE ASSESSMENT
 40.285020 / -104.623510
 SE¼ NE¼ SEC.26 T4N R65W 6PM
 WELD COUNTY, COLORADO
 API # 05-123-12791
 REMEDIATION # 29038

FIGURE NO.
6

DRAWN BY:
JF

EAGLE
 ENVIRONMENTAL
 CONSULTING, LLC
 8000 W 44th Ave, Wheat Ridge, CO 80033
 Ph: 303-433-0479 • F: 303-325-5449



BACKGROUND-01@2'
06/30/22
2'

Arsenic = 2.28***
Barium = 45.6
Cadmium = <0.0931
Copper = <9.31
Lead = <9.31
Nickel = <9.31
Selenium = 0.135
Silver = <0.0931
Zinc = <93.1

BACKGROUND-01

(NS)
WH-SS-01

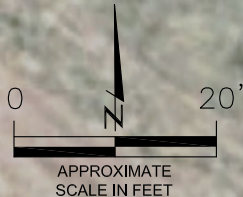
WH-SS-04 (NS)

WH-SS-02

WH-SS-03 (NS)

WH-SS-02@5'
06/30/23
5'

Arsenic = 2.04***
Barium = 58.1
Cadmium = 0.237
Chromium (VI) = <0.252**
Copper = 21.8
Lead = **52.8***
Nickel = <8.61
Selenium = 0.170
Silver = <0.0861
Zinc = <86.1



LEGEND

- WELLHEAD ASSESSMENT BOUNDARIES
- APPROXIMATE LOCATION OF SOIL SAMPLES SUBMITTED FOR LABORATORY ANALYSIS

PARAMETERS

SAMPLE LOCATION
DATE SAMPLE COLLECTED
APPROXIMATE DEPTH
Arsenic = (mg/kg)
Barium = (mg/kg)
Cadmium = (mg/kg)
Chromium (VI) = (mg/kg)
Copper = (mg/kg)
Lead = (mg/kg)
Nickel = (mg/kg)
Selenium = (mg/kg)
Silver = (mg/kg)
Zinc = (mg/kg)

mg/kg = MILLIGRAMS PER KILOGRAM

(NS) – NOT SAMPLED

NOTES:
VALUES PRESENTED WITH A LESS THAN SYMBOL (<) DID NOT CONTAIN CONCENTRATIONS AT/OR ABOVE LABORATORY REPORTING LIMITS AND/OR MINIMUM DETECTION LIMITS.

VALUES PRESENTED IN **BOLD** EXCEED ECMC TABLE 915-1 REGULATORY LIMITS.

*VALUES EXCEED ECMC TABLE 915-1 PROTECTION OF GROUNDWATER SOIL SCREENING LEVELS, ONLY.

**ACHIEVABLE PRACTICAL QUANTITATIVE LIMITS FOR HEXAVALENT CHROMIUM (Cr VI) IN SOILS IS IN THE RANGE OF 0.1 TO 1 mg/kg.

***ARSENIC IS NATURALLY OCCURRING IN COLORADO. LOCAL CLEAN-UP LEVEL (2.85 mg/kg) is 1.25*BACKGROUND (2.28 mg/kg).

ECMC = ENERGY & CARBON MANAGEMENT COMMISSION

METALS IN SOIL MAP
SHELTON R G #26-8
CLOSURE ASSESSMENT
40.285020 / -104.623510
SE ¼ NE ¼ SEC.26 T4N R65W 6PM
WELD COUNTY, COLORADO
API # 05-123-12791
REMEDATION # 29038

FIGURE NO.
7

DRAWN BY:
JF



EAGLE
ENVIRONMENTAL
CONSULTING, LLC
8000 W 44th Ave, Wheat Ridge, CO 80033
Ph: 303-433-0479 • F: 303-325-5449



TABLES

Table 1: Photoionization Detector Reading Summary

Table 2: Soil Analytical Results Summary

Table 3: Groundwater Analytical Results Summary

**TABLE 1
 PHOTOIONIZATION DETECTOR READING SUMMARY
 SHELTON R G #26-8
 CLOSURE ASSESSMENT
 40.285020 / -104.623510
 SE¼ NE¼ SEC.26 T4N R65W 6PM
 WELD COUNTY, COLORADO
 API # 05-123-12791
 REMEDIATION # 29038**

Sample Location (Latitude/Longitude)	Date	Approximate Depth (feet)	PID Reading (ppm-v)	Lab Submission (Y/N)
WH-SS-01 @ 5' (40.285035 / -104.623544)	06/30/23	5	57.8	Y
WH-SS-02 @ 5' (40.285021 / -104.623526)	06/30/23	5	23.8	Y
WH-SS-03 @ 5' (40.285009 / -104.623542)	06/30/23	5	9.1	Y
WH-SS-04 @ 5' (40.285021 / -104.623563)	06/30/23	5	151.5	Y
Background-01 @ 2' (40.285083 / -104.623462)	06/30/23	2	9.2	Y
WH-N @ 0.5' (40.285052 / -104.623546)	06/30/23	0.5	8.9	N
WHE @ 0.5' (40.285021 / -104.623505)	06/30/23	0.5	9.1	N
WH-S @ 0.5' (40.284993 / -104.623540)	06/30/23	0.5	6.9	N
WH-W @ 0.5' (40.285022 / -104.623579)	06/30/23	0.5	8.0	N
(Y/N) = Yes or No ppm-v = parts per million by volume PID = Photoionization Detector				



TABLE 2
SOIL ANALYTICAL RESULTS SUMMARY
SHELTON R G #26-8
CLOSURE ASSESSMENT
40.285020 / -104.623510
SE¼ NE¼ SEC.26 T4N R65W 6PM
WELD COUNTY, COLORADO
API # 05-123-12791
REMEDIATION # 29038

Sample Location		WH-SS-01 @ 5'	WH-SS-02 @ 5'	WH-SS-03 @ 5'	WH-SS-04 @ 5'	Background-01 @ 2'			
(Latitude / Longitude)		(40.285035 / -104.623544)	(40.285021 / -104.623526)	(40.285009 / -104.623542)	(40.285021 / -104.623563)	(40.285083 / -104.623462)			
Sample Date		6/30/2023	6/30/2023	6/30/2023	6/30/2023	6/30/2023			
Sample Depth		5'	5'	5'	5'	2'			
PID Reading (ppm-v)		57.8	23.8	9.1	151.5	9.2			
Regulatory Limits									
Chemical of Concern	Units	ECMC Table 915-1 RSSLs	ECMC Table 915-1 GSSLs	Local Clean-Up Level					
VOCs									
Benzene	mg/kg	1.2	0.0026	--	<0.00200	<0.00200	<0.00200	<0.00200	NA
Toluene	mg/kg	490	0.69	--	<0.00200	<0.00200	<0.00200	<0.00200	NA
Ethylbenzene	mg/kg	5.8	0.78	--	<0.00200	<0.00200	<0.00200	<0.00200	NA
Total Xylenes	mg/kg	58	9.9	--	<0.00200	<0.00200	<0.00200	<0.00200	NA
Naphthalene	mg/kg	2	0.0038	--	<0.00380	<0.00380	<0.00380	<0.00380	NA
1,2,4-Trimethylbenzene	mg/kg	30	0.0081	--	<0.00200	<0.00200	<0.00200	<0.00200	NA
1,3,5-Trimethylbenzene	mg/kg	27	0.0087	--	0.00660	<0.00200	<0.00200	0.00238	NA
TOTAL PETROLEUM HYDROCARBONS									
TPH-GRO	mg/kg	500	--	--	1.33	<0.200	<0.200	<0.200	NA
TPH-DRO	mg/kg		--	--	32.7	99.1	<25.0	<25.0	NA
TPH-RRO	mg/kg		--	--	<100	275	<100	<100	NA
POLYCYCLIC AROMATIC HYDROCARBONS									
1-Methyl-naphthalene	mg/kg	18	0.006	--	0.00383	0.00121	<0.00201	<0.00201	NA
2-Methyl-naphthalene	mg/kg	24	0.019	--	0.00634	0.00195	<0.00201	<0.00201	NA
Acenaphthene	mg/kg	360	0.55	--	0.000693	<0.00067	<0.00067	<0.00067	NA
Anthracene	mg/kg	1800	5.8	--	<0.00067	<0.00067	<0.00067	<0.00067	NA
Benzo(a)-anthracene	mg/kg	1.1	0.011	--	<0.00067	<0.00067	<0.00067	<0.00067	NA
Benzo(a)-pyrene	mg/kg	0.11	0.24	--	<0.00067	<0.00067	<0.00067	<0.00067	NA
Benzo(b)-fluoranthene	mg/kg	1.1	0.3	--	<0.00067	0.000842	<0.00067	<0.00067	NA
Benzo(k)-fluoranthene	mg/kg	11	2.9	--	<0.00067	<0.00067	<0.00067	<0.00067	NA
Chrysene	mg/kg	110	9	--	0.00122	0.000853	<0.00067	<0.00067	NA
Dibenzo(a,h)-anthracene	mg/kg	0.11	0.096	--	<0.00067	0.000798	<0.00067	<0.00067	NA
Fluoranthene	mg/kg	240	8.9	--	<0.00067	<0.00067	<0.00067	<0.00067	NA
Fluorene	mg/kg	240	0.54	--	0.00126	<0.00067	<0.00067	<0.00067	NA
Indeno(1,2,3-cd)-pyrene	mg/kg	1.1	0.98	--	<0.00067	0.000733	<0.00067	<0.00067	NA
Pyrene	mg/kg	180	1.3	--	<0.00067	<0.00067	<0.00067	<0.00067	NA
SOIL SUITABILITY (Inorganics)									
Boron	mg/L	2	--	--	1.66	1.99	1.09	0.649	NA
pH	standard unit	6-8.3	--	--	8.29	8.46 (8.15 / 8.18)	8.21	8.51 (8.30 / 8.30)	8.52
Sodium Adsorption Ratio (SAR)	--	<6	--	--	5.47	4.81	1.90	9.78	9.98
Specific Conductance (EC)	mmhos/cm	<4	--	--	1.29	1.06	0.689	0.972	NA
METALS									
Arsenic	mg/kg	0.68***	0.29***	2.85***	NA	2.04***	NA	NA	2.28***
Barium	mg/kg	15000	82	--	NA	58.1	NA	NA	45.6
Cadmium	mg/kg	71	0.38	--	NA	0.237	NA	NA	<0.0931
Copper	mg/kg	3100	46	--	NA	21.8	NA	NA	<9.31
Lead	mg/kg	400	14	--	NA	52.3*	NA	NA	<9.31
Nickel	mg/kg	1500	26	--	NA	<8.61	NA	NA	<9.31
Selenium	mg/kg	390	0.26	--	NA	0.170	NA	NA	0.135
Silver	mg/kg	390	0.8	--	NA	<0.0861	NA	NA	<0.0931
Zinc	mg/kg	23000	370	--	NA	<86.1	NA	NA	<93.1
Hexavalent Chromium	mg/kg	0.3**	0.00067**	0.1 to 1.0**	NA	<0.252**	NA	NA	NA
ECMC = Energy & Carbon Management Commission		NA - Not Analyzed		VOCs - Volatile Organic Compounds					
mg/kg = milligrams per kilogram		RSSLs = Residential Soil Screening Levels							
mmhos/cm = millimhos per centimeter		GSSLs = Protection of Groundwater Soil Screening Levels							
PID = Photoionization Detector		TPH-GRO = Total Petroleum Hydrocarbons - Gasoline Range Organics							
ppm-v = parts per million by volume		TPH-DRO = Total Petroleum Hydrocarbons - Diesel Range Organics							
mg/L = milligrams per liter		TPH-RRO = Total Petroleum Hydrocarbons - Residual Range Organics							
SAR = Sodium Adsorption Ratio									
Notes:									
Values presented with a less than symbol (<) did not contain concentrations at or above the laboratory reporting limit and/or minimum detection limit.									
Values presented in BOLD exceed ECMC Table 915-1 Regulatory Limits. Values presented with asterisk (*) exceed ECMC Table 915-1 GSSLs, only.									
Laboratory reruns were completed on samples with pH values outside ECMC Table 915-1 Regulatory Range. Results of the reruns are presented in parentheses.									
**Achievable practical quantitative limits for Hexavalent Chromium in soils is in the range of 0.1 to 1 mg/kg.									
***Arsenic is naturally occurring in Colorado. The Local Clean-up Level (2.85 mg/kg) is 1.25*Background (2.28 mg/kg).									

TABLE 3
GROUNDWATER ANALYTICAL RESULTS SUMMARY
SHELTON R G #26-8
CLOSURE ASSESSMENT
40.285020 / -104.623510
SE1/4 NE 1/4 SEC.26 T4N R65W 6PM
WELD COUNTY, COLORADO
API # 05-123-12791
REMIEDIATION # 29038

Sample Location (Latitude/Longitude)	Date	Benzene (µg/L)	Toluene (µg/L)	Ethylbenzene (µg/L)	Total Xylenes (µg/L)	Naphthalene (µg/L)	1,2,4- Trimethylbenzene (µg/L)	1,3,5 - Trimethylbenzene (µg/L)
<i>ECMC Table 915-1 Regulatory Limits (µg/L)</i>		5	560	700	1,400	140	67	67
GW-01 (40.285021 / -104.623544)	06/30/23	21.9	102	23.1	316	<2.00	36.3	22.8

ECMC = Energy & Carbon Management Commission

µg/L - micrograms per liter

Notes: Values presented with a less than symbol (<) indicate concentrations were not observed at or above the laboratory reporting limit.

Values presented in **bold** typeface exceed ECMC Table 915-1 regulatory limits for that compound.