

**TABLE 1**  
**FIELD DATA SUMMARY TABLE**  
**NOBLE ENERGY INC. - 100322**  
**LAND 31-13, 17, 19, 24, 36D TANK BATTERY, WELD COUNTY, COLORADO**  
**REM #33833**



Sample ID	Sample Date	Depth (ft. bgs)	GPS Data <sup>(1)</sup> Latitude/Longitude		PDOP Value	VOC Concentration <sup>(2)</sup> (ppm)
AST01@0-6"	9/9/2024	0-0.5	40.088608	-104.602359	0.9	0.6
AST02@0-6"	9/9/2024	0-0.5	40.088568	-104.602376	0.9	0.6
AST03@0-6"	9/9/2024	0-0.5	40.088519	-104.602371	0.9	0.2
PWV01-B@4.5'	9/9/2024	4.5	40.088658	-104.602359	NC	0.1
PWV01-N@2.5'	9/9/2024	2.5	40.088685	-104.602359	0.9	0.0
PWV01-E@2.5'	9/9/2024	2.5	40.088657	-104.602318	0.9	0.6
PWV01-S@2.5'	9/9/2024	2.5	40.088636	-104.602354	0.9	0.0
PWV02-B@4.5'	9/9/2024	4.5	40.088658	-104.602427	NC	0.0
PWV02-N@2.5'	9/9/2024	2.5	40.088683	-104.602416	0.9	0.0
PWV02-S@2.5'	9/9/2024	2.5	40.088631	-104.602414	0.9	0.9
PWV02-W@2.5'	9/9/2024	2.5	40.088662	-104.602465	0.9	0.0
SEP01-DL@4.5'	9/9/2024	4.5	40.088999	-104.602426	0.8	0.0
SEP01-FL01@4.5' <sup>[3]</sup>	9/9/2024	4.5	40.089006	-104.602355	0.8	0.0
SEP01-FL02@4.5' <sup>[4]</sup>	9/9/2024	4.5	40.089007	-104.602360	0.8	0.0
SEP01-FL03@4.5' <sup>[5]</sup>	9/9/2024	4.5	40.089006	-104.602357	0.8	0.0
SEP01-FL04@4.5' <sup>[6]</sup>	9/9/2024	4.5	40.089007	-104.602374	0.8	0.0
SEP01-FL05@4.5' <sup>[7]</sup>	9/9/2024	4.5	40.089007	-104.602368	0.8	0.0
GL01@0-6"	9/9/2024	0-0.5	40.089109	-104.602396	1.0	0.2
FLARE01@0-6"	9/9/2024	0-0.5	40.088916	-104.602320	0.8	0.0
FLARE02@0-6"	9/9/2024	0-0.5	40.088885	-104.602321	0.8	0.0
MH01@0-6"	9/9/2024	0-0.5	40.089197	-104.602416	0.9	0.2
BKG01@0-6"	9/10/2024	0-0.5	40.089198	-104.602147	0.8	0.0
BKG01@2.5'	9/10/2024	2.5	40.089198	-104.602147	0.8	0.0
BKG01@4.5'	9/10/2024	4.5	40.089198	-104.602147	0.8	0.3
BKG02@0-6" <sup>(8)</sup>	9/18/2024	0-0.5	40.088319	-104.602398	0.8	0.1
BKG02@2.5' <sup>(8)</sup>	9/18/2024	2.5	40.088319	-104.602398	0.8	0.2
BKG02@3' <sup>(8)</sup>	9/18/2024	3	40.088319	-104.602398	0.8	0.4
BKG02@4' <sup>(8)</sup>	9/18/2024	4	40.088319	-104.602398	0.8	0.1
BKG02@4.5' <sup>(8)</sup>	9/18/2024	4.5	40.088319	-104.602398	0.8	0.0
BKG03@0.5' <sup>(8)</sup>	12/18/2024	0.5	40.088702	-104.600534	0.9	0.1
BKG03@2.5' <sup>(8)</sup>	12/18/2024	2.5	40.088702	-104.600534	0.9	0.1
BKG03@3' <sup>(8)</sup>	12/18/2024	3	40.088702	-104.600534	0.9	0.2
BKG03@4.5' <sup>(8)</sup>	12/18/2024	4.5	40.088702	-104.600534	0.9	0.2
BKG04@0.5' <sup>(8)</sup>	12/18/2024	0.5	40.088717	-104.600705	0.8	0.2
BKG04@2.5' <sup>(8)</sup>	12/18/2024	2.5	40.088717	-104.600705	0.8	0.2
BKG04@3' <sup>(8)</sup>	12/18/2024	3	40.088717	-104.600705	0.8	0.2
BKG04@4.5' <sup>(8)</sup>	12/18/2024	4.5	40.088717	-104.600705	0.8	0.2
BKG05@0.5' <sup>(8)</sup>	12/18/2024	0.5	40.088731	-104.600948	0.8	0.1
BKG05@2.5' <sup>(8)</sup>	12/18/2024	2.5	40.088731	-104.600948	0.8	0.1
BKG05@3' <sup>(8)</sup>	12/18/2024	3	40.088731	-104.600948	0.8	0.2
BKG05@4.5' <sup>(8)</sup>	12/18/2024	4.5	40.088731	-104.600948	0.8	0.1
BKG06@0.5' <sup>(8)</sup>	12/18/2024	0.5	40.088750	-104.601189	0.8	0.0
BKG06@2.5' <sup>(8)</sup>	12/18/2024	2.5	40.088750	-104.601189	0.8	0.1
BKG06@3' <sup>(8)</sup>	12/18/2024	3	40.088750	-104.601189	0.8	0.2
BKG06@4.5' <sup>(8)</sup>	12/18/2024	4.5	40.088750	-104.601189	0.8	0.2

TABLE 1  
FIELD DATA SUMMARY TABLE  
NOBLE ENERGY INC. - 100322  
LAND 31-13, 17, 19, 24, 36D TANK BATTERY, WELD COUNTY, COLORADO  
REM #33833



Sample ID	Sample Date	Depth (ft. bgs)	GPS Data <sup>(1)</sup> Latitude/Longitude	PDOP Value	VOC Concentration <sup>(2)</sup> (ppm)
-----------	-------------	--------------------	---	------------	---

**Notes:**

1. Global Positioning System (GPS) data is provided in decimal degrees using North American Datum (NAD) 83 UTM Zone 13 North.
2. Volatile organic compound (VOC) concentrations are measured in the field using a photoionization detector (PID).
3. SEP01-FL01 is associated with Land JG 31-36D Wellhead/Flowline (REM# 33855)
4. SEP01-FL02 is associated with Land JG 31-13D Wellhead/Flowline (REM# 33835)
5. SEP01-FL03 is associated with Land JG 31-24D Wellhead/Flowline (REM# 33835)
6. SEP01-FL04 is associated with Land JG 31-19D Wellhead/Flowline (REM# 33835)
7. SEP01-FL05 is associated with Land JG 31-17D Wellhead/Flowline (REM# 33835)
8. Samples collected under Land JG 31-13, 17, 19, 24, 36D Flowlines project (REM# 33835)

PDOP = Position Dilution of Precision

ppm = Parts per million

ft. = Feet

bgs = Below ground surface

NC = Data not collected

**TABLE 2**  
**SUMMARY OF VOLATILE ORGANIC SOIL CHEMISTRY DATA**  
**NOBLE ENERGY INC. - 100322**  
**LAND 31-13, 17, 19, 24, 36D TANK BATTERY, WELD COUNTY, COLORADO**  
**REM # 33833**



Sample ID	Sample Date	Depth (ft. bgs)	Benzene (mg/kg)	Toluene (mg/kg)	Ethyl-Benzene (mg/kg)	Xylenes (mg/kg)	1,2,4- Trimethyl- Benzene (mg/kg)	1,3,5- Trimethyl- Benzene (mg/kg)	Naphthalene (mg/kg)	TPH (mg/kg)	TPH GRO (mg/kg)	TPH DRO (mg/kg)	TPH ORO (mg/kg)
ECMC Table 915-1 Limits (Residential SSL)			1.2	490	5.8	58	30	27	2	500	500**		
ECMC Table 915-1 Limits (Protection of Groundwater SSL)			0.0026	0.69	0.78	9.9	0.0081	0.0087	0.0038	500	500**		
AST01@0-6"	9/9/2024	0-0.5	<0.0020	<0.0050	<0.0050	<0.010	<0.0050	<0.0050	<0.0038	<50	<0.50	<50	<50
AST02@0-6"	9/9/2024	0-0.5	<0.0020	<0.0050	<0.0050	<0.010	<0.0050	<0.0050	<0.0038	<50	<0.50	<50	<50
AST03@0-6"	9/9/2024	0-0.5	<0.0020	<0.0050	<0.0050	<0.010	<0.0050	<0.0050	<0.0038	<50	<0.50	<50	<50
PWV01-B@4.5'	9/9/2024	4.5	<0.0020	<0.0050	<0.0050	<0.010	<0.0050	<0.0050	<0.0038	<50	<0.50	<50	<50
PWV01-E@2.5'	9/9/2024	2.5	<0.0020	<0.0050	<0.0050	<0.010	<0.0050	<0.0050	<0.0038	<50	<0.50	<50	<50
PWV02-B@4.5'	9/9/2024	4.5	<0.0020	<0.0050	<0.0050	<0.010	<0.0050	<0.0050	<0.0038	<50	<0.50	<50	<50
PWV02-S@2.5'	9/9/2024	2.5	<0.0020	<0.0050	<0.0050	<0.010	<0.0050	<0.0050	<0.0038	<50	<0.50	<50	<50
SEP01-DL@4.5'	9/9/2024	4.5	<0.0020	<0.0050	<0.0050	<0.010	<0.0050	<0.0050	<0.0038	<50	<0.50	<50	<50
SEP01-FL01@4.5' <sup>[1]</sup>	9/9/2024	4.5	<0.0020	<0.0050	<0.0050	<0.010	<0.0050	<0.0050	<0.0038	<50	<0.50	<50	<50
SEP01-FL02@4.5' <sup>[2]</sup>	9/9/2024	4.5	<0.0020	<0.0050	<0.0050	<0.010	<0.0050	<0.0050	<0.0038	<50	<0.50	<50	<50
SEP01-FL03@4.5' <sup>[3]</sup>	9/9/2024	4.5	<0.0020	<0.0050	<0.0050	<0.010	<0.0050	<0.0050	<0.0038	<50	<0.50	<50	<50
SEP01-FL04@4.5' <sup>[4]</sup>	9/9/2024	4.5	<0.0020	<0.0050	<0.0050	<0.010	<0.0050	<0.0050	<0.0038	<50	<0.50	<50	<50
SEP01-FL05@4.5' <sup>[5]</sup>	9/9/2024	4.5	<0.0020	<0.0050	<0.0050	<0.010	<0.0050	<0.0050	<0.0038	<50	<0.50	<50	<50
GL01@0-6"	9/9/2024	0-0.5	<0.0020	<0.0050	<0.0050	<0.010	<0.0050	<0.0050	<0.0038	<50	<0.50	<50	<50

**Notes:**

1. SEP01-FL01 is associated with Land JG 31-36D Wellhead/Flowline (REM# 33855)
2. SEP01-FL02 is associated with Land JG 31-13D Wellhead/Flowline (REM# 33835)
3. SEP01-FL03 is associated with Land JG 31-24D Wellhead/Flowline (REM# 33835)
4. SEP01-FL04 is associated with Land JG 31-19D Wellhead/Flowline (REM# 33835)
5. SEP01-FL05 is associated with Land JG 31-17D Wellhead/Flowline (REM# 33835)

ECMC = Energy & Carbon Management Commission

(<) = Analytical result is less than the indicated laboratory reporting limit.

TPH-GRO = Total petroleum hydrocarbons - gasoline range organics

TPH-DRO = Total petroleum hydrocarbons - diesel range organics

TPH-ORO = Total petroleum hydrocarbons - oil range organics

mg/kg = Milligrams per kilogram

ft. = Feet

bgs = Below ground surface

\*\* Summation of GRO+DRO+ORO must be less than 500 mg/kg.

TABLE 3  
SUMMARY OF POLYCYCLIC AROMATIC HYDROCARBON SOIL CHEMISTRY DATA  
NOBLE ENERGY INC. -100322  
LAND 31-13, 17, 19, 24, 36D TANK BATTERY, WELD COUNTY, COLORADO  
REM #33833



Sample ID	Sample Date	Depth (ft. bgs)	Acenaphthene (mg/kg)	Anthracene (mg/kg)	Benzo (a) Anthracene (mg/kg)	Benzo (a) Pyrene (mg/kg)	Benzo (b) Fluoranthene (mg/kg)	Benzo (k) Fluoranthene (mg/kg)	Chrysene (mg/kg)	Dibenzo (a,h) Anthracene (mg/kg)	Fluoranthene (mg/kg)	Fluorene (mg/kg)	Indeno (1,2,3-cd) Pyrene (mg/kg)	Pyrene (mg/kg)	1-Methyl - Naphthalene (mg/kg)	2-Methyl- Naphthalene (mg/kg)
ECMC Table 915-1 Limits (Residential SSL)			360	1,800	1.1	0.11	1.1	11	110	0.11	240	240	1.1	180	18	24
ECMC Table 915-1 Limits (Protection of Groundwater SSL)			0.55	5.8	0.011	0.24	0.3	2.9	9	0.096	8.9	0.54	0.98	1.3	0.006	0.019
AST01@0-6"	9/9/2024	0-0.5	<0.00500	<0.00500	<0.00500	<0.00500	<0.00500	<0.00500	<0.00500	<0.00500	<0.00500	<0.00500	<0.00500	<0.00500	<0.00500	<0.00500
AST02@0-6"	9/9/2024	0-0.5	<0.00500	<0.00500	<0.00500	<0.00500	<0.00500	<0.00500	<0.00500	<0.00500	<0.00500	<0.00500	<0.00500	<0.00500	<0.00500	<0.00500
AST03@0-6"	9/9/2024	0-0.5	<0.00500	<0.00500	<0.00500	<0.00500	<0.00500	<0.00500	<0.00500	<0.00500	<0.00500	<0.00500	<0.00500	<0.00500	<0.00500	<0.00500
PWV01-B@4.5'	9/9/2024	4.5	<0.00500	<0.00500	<0.00500	<0.00500	<0.00500	<0.00500	<0.00500	<0.00500	<0.00500	<0.00500	<0.00500	<0.00500	<0.00500	<0.00500
PWV01-E@2.5'	9/9/2024	2.5	<0.00500	<0.00500	<0.00500	<0.00500	<0.00500	<0.00500	<0.00500	<0.00500	<0.00500	<0.00500	<0.00500	<0.00500	<0.00500	<0.00500
PWV02-B@4.5'	9/9/2024	4.5	<0.00500	<0.00500	<0.00500	<0.00500	<0.00500	<0.00500	<0.00500	<0.00500	<0.00500	<0.00500	<0.00500	<0.00500	<0.00500	<0.00500
PWV02-S@2.5'	9/9/2024	2.5	<0.00500	<0.00500	<0.00500	<0.00500	<0.00500	<0.00500	<0.00500	<0.00500	<0.00500	<0.00500	<0.00500	<0.00500	<0.00500	<0.00500
SEP01-DL@4.5'	9/9/2024	4.5	<0.00500	<0.00500	<0.00500	<0.00500	<0.00500	<0.00500	<0.00500	<0.00500	<0.00500	<0.00500	<0.00500	<0.00500	<0.00500	<0.00500
SEP01-FL01@4.5' <sup>[1]</sup>	9/9/2024	4.5	<0.00500	<0.00500	<0.00500	<0.00500	<0.00500	<0.00500	<0.00500	<0.00500	<0.00500	<0.00500	<0.00500	<0.00500	<0.00500	<0.00500
SEP01-FL02@4.5' <sup>[2]</sup>	9/9/2024	4.5	<0.00500	<0.00500	<0.00500	<0.00500	<0.00500	<0.00500	<0.00500	<0.00500	<0.00500	<0.00500	<0.00500	<0.00500	<0.00500	<0.00500
SEP01-FL03@4.5' <sup>[3]</sup>	9/9/2024	4.5	<0.00500	<0.00500	<0.00500	<0.00500	<0.00500	<0.00500	<0.00500	<0.00500	<0.00500	<0.00500	<0.00500	<0.00500	<0.00500	<0.00500
SEP01-FL04@4.5' <sup>[4]</sup>	9/9/2024	4.5	<0.00500	<0.00500	<0.00500	<0.00500	<0.00500	<0.00500	<0.00500	<0.00500	<0.00500	<0.00500	<0.00500	<0.00500	<0.00500	<0.00500
SEP01-FL05@4.5' <sup>[5]</sup>	9/9/2024	4.5	<0.00500	<0.00500	<0.00500	<0.00500	<0.00500	<0.00500	<0.00500	<0.00500	<0.00500	<0.00500	<0.00500	<0.00500	<0.00500	<0.00500
GL01@0-6"	9/9/2024	0-0.5	<0.00500	<0.00500	<0.00500	<0.00500	<0.00500	<0.00500	<0.00500	<0.00500	<0.00500	<0.00500	<0.00500	<0.00500	<0.00500	<0.00500

**Notes:**

1. SEP01-FL01 is associated with Land JG 31-36D Wellhead/Flowline (REM# 33855)
2. SEP01-FL02 is associated with Land JG 31-13D Wellhead/Flowline (REM# 33835)
3. SEP01-FL03 is associated with Land JG 31-24D Wellhead/Flowline (REM# 33835)
4. SEP01-FL04 is associated with Land JG 31-19D Wellhead/Flowline (REM# 33835)
5. SEP01-FL05 is associated with Land JG 31-17D Wellhead/Flowline (REM# 33835)

ECMC = Colorado Energy & Carbon Management Commission

(<) = Analytical result is less than the indicated laboratory reporting limit.

ft. = Feet

bgs = Below ground surface

mg/kg = Milligrams per kilogram

**TABLE 4**  
**SUMMARY OF SOIL SUITABILITY FOR RECLAMATION**  
**NOBLE ENERGY INC. - 100322**



**LAND 31-13, 17, 19, 24, 34 D TANK BATTERY, WELD COUNTY, COLORADO**  
**REM #33833**

Sample ID	Sample Date	Depth (ft. bgs)	pH (Standard Units)	EC (mmhos/cm)	SAR (Standard Units)	Boron (mg/L)
ECMC Table 915-1 Soil Suitability Limits			6 - 8.3	<4	<6	2
AST01@0-6"	9/9/2024	0-0.5	9.31	0.129	0.599	<2.00
AST02@0-6"	9/9/2024	0-0.5	8.62	0.0968	0.119	<2.00
AST03@0-6"	9/9/2024	0-0.5	10.7	1.38	6.66	<2.00
PWV01-B@4.5'	9/9/2024	4.5	8.45	0.611	1.45	<2.00
PWV01-E@2.5'	9/9/2024	2.5	7.82	2.84	0.550	<2.00
PWV02-B@4.5'	9/9/2024	4.5	8.16	0.748	1.16	<2.00
PWV02-S@2.5'	9/9/2024	2.5	8.86	0.103	0.0252	<2.00
SEP01-DL@4.5'	9/9/2024	4.5	8.21	0.683	1.32	<2.00
SEP01-FL01@4.5' <sup>[1]</sup>	9/9/2024	4.5	8.44	0.389	0.354	<2.00
SEP01-FL02@4.5' <sup>[2]</sup>	9/9/2024	4.5	8.24	0.694	0.360	<2.00
SEP01-FL03@4.5' <sup>[3]</sup>	9/9/2024	4.5	8.15	1.11	0.205	<2.00
SEP01-FL04@4.5' <sup>[4]</sup>	9/9/2024	4.5	8.14	1.18	0.122	<2.00
SEP01-FL05@4.5' <sup>[5]</sup>	9/9/2024	4.5	8.24	0.469	0.166	<2.00
GL01@0-6"	9/9/2024	0-0.5	9.56	0.171	0.570	<2.00
BKG01@0-6"	9/10/2024	0-0.5	7.58	2.36	7.64	<2.00
BKG01@2.5'	9/10/2024	2.5	7.99	2.72	2.70	<2.00
BKG01@4.5'	9/10/2024	4.5	8.45	1.59	6.72	<2.00
BKG02@0-6" <sup>(6)</sup>	9/18/2024	0-0.5	8.57	0.554	2.00	<2.00
BKG02@2.5' <sup>(6)</sup>	9/18/2024	2.5	7.89	4.17	1.47	<2.00
BKG02@3' <sup>(6)</sup>	9/18/2024	3	8.32	1.89	3.07	<2.00
BKG02@4' <sup>(6)</sup>	9/18/2024	4	8.63	0.774	2.24	<2.00
BKG02@4.5' <sup>(6)</sup>	9/18/2024	4.5	7.74	0.822	3.39	<2.00
BKG03@0.5' <sup>(6)</sup>	12/18/2024	0.5	8.08	0.902	0.0649	<2.00
BKG03@2.5' <sup>(6)</sup>	12/18/2024	2.5	8.04	1.61	4.21	<2.00
BKG03@3' <sup>(6)</sup>	12/18/2024	3	8.10	2.15	3.98	<2.00
BKG03@4.5' <sup>(6)</sup>	12/18/2024	4.5	7.90	0.817	4.11	<2.00
BKG04@0.5' <sup>(6)</sup>	12/18/2024	0.5	8.00	2.53	0.557	<2.00
BKG04@2.5' <sup>(6)</sup>	12/18/2024	2.5	8.32	1.79	3.20	<2.00
BKG04@3' <sup>(6)</sup>	12/18/2024	3	8.14	2.08	3.89	<2.00
BKG04@4.5' <sup>(6)</sup>	12/18/2024	4.5	7.95	0.773	4.82	<2.00
BKG05@0.5' <sup>(6)</sup>	12/18/2024	0.5	7.94	2.25	0.0433	<2.00
BKG05@2.5' <sup>(6)</sup>	12/18/2024	2.5	7.73	0.957	4.86	<2.00
BKG05@3' <sup>(6)</sup>	12/18/2024	3	8.14	2.43	3.72	<2.00
BKG05@4.5' <sup>(6)</sup>	12/18/2024	4.5	8.29	0.892	6.26	<2.00
BKG06@0.5' <sup>(6)</sup>	12/18/2024	0.5	8.03	1.96	0.0614	<2.00
BKG06@2.5' <sup>(6)</sup>	12/18/2024	2.5	8.05	2.46	4.75	<2.00
BKG06@3' <sup>(6)</sup>	12/18/2024	3	7.86	3.76	3.92	<2.00
BKG06@4.5' <sup>(6)</sup>	12/18/2024	4.5	7.84	0.0854	2.76	<2.00

**TABLE 4**  
**SUMMARY OF SOIL SUITABILITY FOR RECLAMATION**  
**NOBLE ENERGY INC. - 100322**  
**LAND 31-13, 17, 19, 24, 34 D TANK BATTERY, WELD COUNTY, COLORADO**  
**REM #33833**



Sample ID	Sample Date	Depth (ft. bgs)	pH (Standard Units)	EC (mmhos/cm)	SAR (Standard Units)	Boron (mg/L)
ECMC Table 915-1 Soil Suitability Limits			6 - 8.3	<4	<6	2
Maximum Background Concentration			8.63	4.17	7.64	-

**Notes:**

1. SEP01-FL01 is associated with Land JG 31-36D Wellhead/Flowline (REM# 33855)
2. SEP01-FL02 is associated with Land JG 31-13D Wellhead/Flowline (REM# 33835)
3. SEP01-FL03 is associated with Land JG 31-24D Wellhead/Flowline (REM# 33835)
4. SEP01-FL04 is associated with Land JG 31-19D Wellhead/Flowline (REM# 33835)
5. SEP01-FL05 is associated with Land JG 31-17D Wellhead/Flowline (REM# 33835)
6. Samples collected under Land JG 31-13, 17, 19, 24, 36D Flowlines project (REM# 33835)

ECMC = Colorado Energy & Carbon Management Commission

EC = Electrical conductivity

SAR = Sodium adsorption ratio

mmhos/cm = millimhos per centimeter

mg/L = milligram per liter

(<) = Analytical result is less than the indicated laboratory reporting limit.

ft. = Feet

bgs = Below ground surface

**Bold** faced values exceed the ECMC Table 915-1 limit(s), but are within background concentrations.

**Bold** faced values exceed the ECMC Table 915-1 limit(s) and native background concentrations.

Brown highlighted soil analytical values indicate a regulatory exceedance.

**TABLE 5**  
**SUMMARY OF METALS IN SOIL CHEMISTRY DATA**  
**NOBLE ENERGY INC. - 100322**  
**LAND 31-13, 17, 19, 24, 36 D TANK BATTERY, WELD COUNTY, COLORADO**  
**REM #33833**



Sample ID	Sample Date	Depth (ft. bgs)	Arsenic (mg/kg)	Barium (mg/kg)	Cadmium (mg/kg)	Chromium (VI) <sup>(1)</sup> (mg/kg)	Copper (mg/kg)	Lead (mg/kg)	Nickel (mg/kg)	Selenium (mg/kg)	Silver (mg/kg)	Zinc (mg/kg)
ECMC Table 915-1 Limits (Residential SSL)			0.68	15,000	71	0.3	3,100	400	1,500	390	390	23,000
ECMC Table 915-1 Limits (Protection of Groundwater SSL)			0.29	82	0.38	0.00067	46	14	26	0.26	0.8	370
AST01@0-6"	9/9/2024	0-0.5	2.40	51.1	<0.200	<0.30	6.90	7.02	3.61	<0.260	0.0314	16.3
AST02@0-6"	9/9/2024	0-0.5	1.89	81.6	<0.200	<0.30	5.63	6.50	3.34	<0.260	0.0413	18.4
AST03@0-6"	9/9/2024	0-0.5	1.44	104	<0.200	<0.30	4.58	5.75	3.07	<0.260	0.0415	15.9
PWV01-B@4.5'	9/9/2024	4.5	2.71	83.4	<0.200	<0.30	5.77	7.71	4.44	<0.260	0.0293	16.2
PWV01-E@2.5'	9/9/2024	2.5	4.30	334	0.320	<0.30	8.44	11.4	6.74	<0.260	0.0571	26.7
PWV02-B@4.5'	9/9/2024	4.5	3.68	117	0.228	<0.30	6.30	10.8	5.57	<0.260	0.0402	21.1
PWV02-S@2.5'	9/9/2024	2.5	3.20	111	0.226	<0.30	5.75	7.54	4.80	<0.260	0.0385	18.4
SEP01-DL@4.5'	9/9/2024	4.5	3.30	128	0.246	<0.30	6.26	8.75	5.04	<0.260	0.0467	20.3
SEP01-FL01@4.5' <sup>(12)</sup>	9/9/2024	4.5	3.42	156	0.544	<0.30	6.74	8.76	5.47	<0.260	0.0469	25.8
SEP01-FL02@4.5' <sup>(13)</sup>	9/9/2024	4.5	3.25	140	0.430	<0.30	6.36	8.65	5.07	<0.260	0.0464	20.7
SEP01-FL03@4.5' <sup>(14)</sup>	9/9/2024	4.5	3.78	183	0.311	<0.30	6.35	8.93	4.99	<0.260	0.0491	20.9
SEP01-FL04@4.5' <sup>(15)</sup>	9/9/2024	4.5	3.86	214	0.339	<0.30	7.02	9.94	5.88	<0.260	0.0511	22.8
SEP01-FL05@4.5' <sup>(16)</sup>	9/9/2024	4.5	6.60	117	3.80	<0.30	8.37	8.94	6.67	<0.260	0.0368	27.1
GL01@0-6"	9/9/2024	0-0.5	1.61	56.7	<0.200	<0.30	4.50	5.26	3.17	<0.260	0.0302	14.0
BKG01@0-6"	9/10/2024	0-0.5	4.03	171	0.421	<0.30	8.47	13.7	6.83	0.309	0.0705	29.3
BKG01@2.5'	9/10/2024	2.5	2.98	108	0.209	<0.30	5.77	7.91	5.35	<0.260	0.0397	20.7
BKG01@4.5'	9/10/2024	4.5	2.16	43.1	<0.180	<0.30	3.01	4.66	3.25	<0.234	0.0206	11.4
BKG02@0-6" <sup>(7)</sup>	9/18/2024	0-0.5	4.85	356	0.292	<0.30	7.03	13.5	5.85	<0.260	0.0685	23.4
BKG02@2.5' <sup>(7)</sup>	9/18/2024	2.5	6.13	141	0.293	<0.30	7.08	14.4	4.93	<0.236	0.0610	22.1
BKG02@3' <sup>(7)</sup>	9/18/2024	3	3.80	110	<0.200	<0.30	5.03	7.49	4.35	<0.260	0.0313	17.5
BKG02@4' <sup>(7)</sup>	9/18/2024	4	2.62	41.2	<0.200	<0.30	2.59	3.17	3.32	<0.260	<0.0200	7.62
BKG02@4.5' <sup>(7)</sup>	9/18/2024	4.5	2.43	43.1	<0.200	<0.30	3.48	4.38	3.42	<0.260	<0.0200	11.5
BKG03@0.5' <sup>(7)</sup>	12/18/2024	0.5	2.30	115	0.284	<0.30	9.04	8.84	5.12	<0.260	0.0374	37.8
BKG03@2.5' <sup>(7)</sup>	12/18/2024	2.5	2.07	110	0.205	<0.30	6.67	6.84	4.84	<0.260	0.0282	28.4
BKG03@3' <sup>(7)</sup>	12/18/2024	3	2.29	99.7	<0.200	<0.30	5.94	6.23	4.91	<0.260	0.0266	25.3
BKG03@4.5' <sup>(7)</sup>	12/18/2024	4.5	1.76	79.8	<0.200	<0.30	4.03	5.04	3.64	<0.260	<0.0200	17.6
BKG04@0.5' <sup>(7)</sup>	12/18/2024	0.5	1.84	107	<0.200	<0.30	4.47	4.81	3.96	<0.260	0.0204	19.4
BKG04@2.5' <sup>(7)</sup>	12/18/2024	2.5	2.07	99.7	0.273	<0.30	8.58	8.24	5.01	<0.260	0.0330	37.0
BKG04@3' <sup>(7)</sup>	12/18/2024	3	2.83	137	0.214	<0.30	7.77	7.78	6.24	<0.260	0.0376	32.2
BKG04@4.5' <sup>(7)</sup>	12/18/2024	4.5	1.73	60.0	<0.200	<0.30	3.75	4.08	3.10	<0.260	<0.0200	15.0
BKG05@0.5' <sup>(7)</sup>	12/18/2024	0.5	1.60	50.3	<0.200	<0.30	5.70	5.62	3.78	<0.260	<0.0200	25.3
BKG05@2.5' <sup>(7)</sup>	12/18/2024	2.5	2.76	191	0.301	<0.30	11.0	9.27	6.45	<0.260	0.0376	46.0

TABLE 5  
SUMMARY OF METALS IN SOIL CHEMISTRY DATA  
NOBLE ENERGY INC. - 100322  
LAND 31-13, 17, 19, 24, 36 D TANK BATTERY, WELD COUNTY, COLORADO  
REM #33833



Sample ID	Sample Date	Depth (ft. bgs)	Arsenic (mg/kg)	Barium (mg/kg)	Cadmium (mg/kg)	Chromium (VI) <sup>[1]</sup> (mg/kg)	Copper (mg/kg)	Lead (mg/kg)	Nickel (mg/kg)	Selenium (mg/kg)	Silver (mg/kg)	Zinc (mg/kg)
ECMC Table 915-1 Limits (Residential SSL)			0.68	15,000	71	0.3	3,100	400	1,500	390	390	23,000
ECMC Table 915-1 Limits (Protection of Groundwater SSL)			0.29	82	0.38	0.00067	46	14	26	0.26	0.8	370
BKG05@3' <sup>(7)</sup>	12/18/2024	3	<b>2.89</b>	<b>142</b>	0.253	<0.30	9.47	9.10	6.98	<0.260	0.0451	45.5
BKG05@4.5' <sup>(7)</sup>	12/18/2024	4.5	<b>2.76</b>	<b>149</b>	0.207	<0.30	8.39	7.88	6.55	<0.260	0.0420	34.7
BKG06@0.5' <sup>(7)</sup>	12/18/2024	0.5	<b>2.15</b>	<b>82.8</b>	0.231	<0.30	8.36	7.79	5.12	<0.260	0.0321	33.9
BKG06@2.5' <sup>(7)</sup>	12/18/2024	2.5	<b>2.27</b>	<b>109</b>	0.339	<0.30	9.71	10.1	6.40	<0.260	0.0505	33.4
BKG06@3' <sup>(7)</sup>	12/18/2024	3	<b>1.61</b>	58.1	<0.200	<0.30	4.42	5.13	3.73	<0.260	<0.0200	18.8
BKG06@4.5' <sup>(7)</sup>	12/18/2024	4.5	<b>1.67</b>	53.5	<0.200	<0.30	4.20	5.27	3.31	<0.260	0.0204	17.2
Maximum Background Concentration X 1.25			7.66	445	0.526	-	13.8	18.0	8.73	0.386	0.0881	57.5

**Notes:**

- Compound falls within ECMC Table 915-1 Footnote 9.
- SEP01-FL01 is associated with Land JG 31-36D Wellhead/Flowline (REM# 33855)
- SEP01-FL02 is associated with Land JG 31-13D Wellhead/Flowline (REM# 33835)
- SEP01-FL03 is associated with Land JG 31-24D Wellhead/Flowline (REM# 33835)
- SEP01-FL04 is associated with Land JG 31-19D Wellhead/Flowline (REM# 33835)
- SEP01-FL05 is associated with Land JG 31-17D Wellhead/Flowline (REM# 33835)
- Samples collected under Land JG 31-13, 17, 19, 24, 36D Flowlines project (REM# 33835)

ECMC = Energy & Carbon Management Commission

(<) = Analytical result is less than the indicated laboratory reporting limit.

mg/kg = Milligrams per kilogram

ft. = Feet

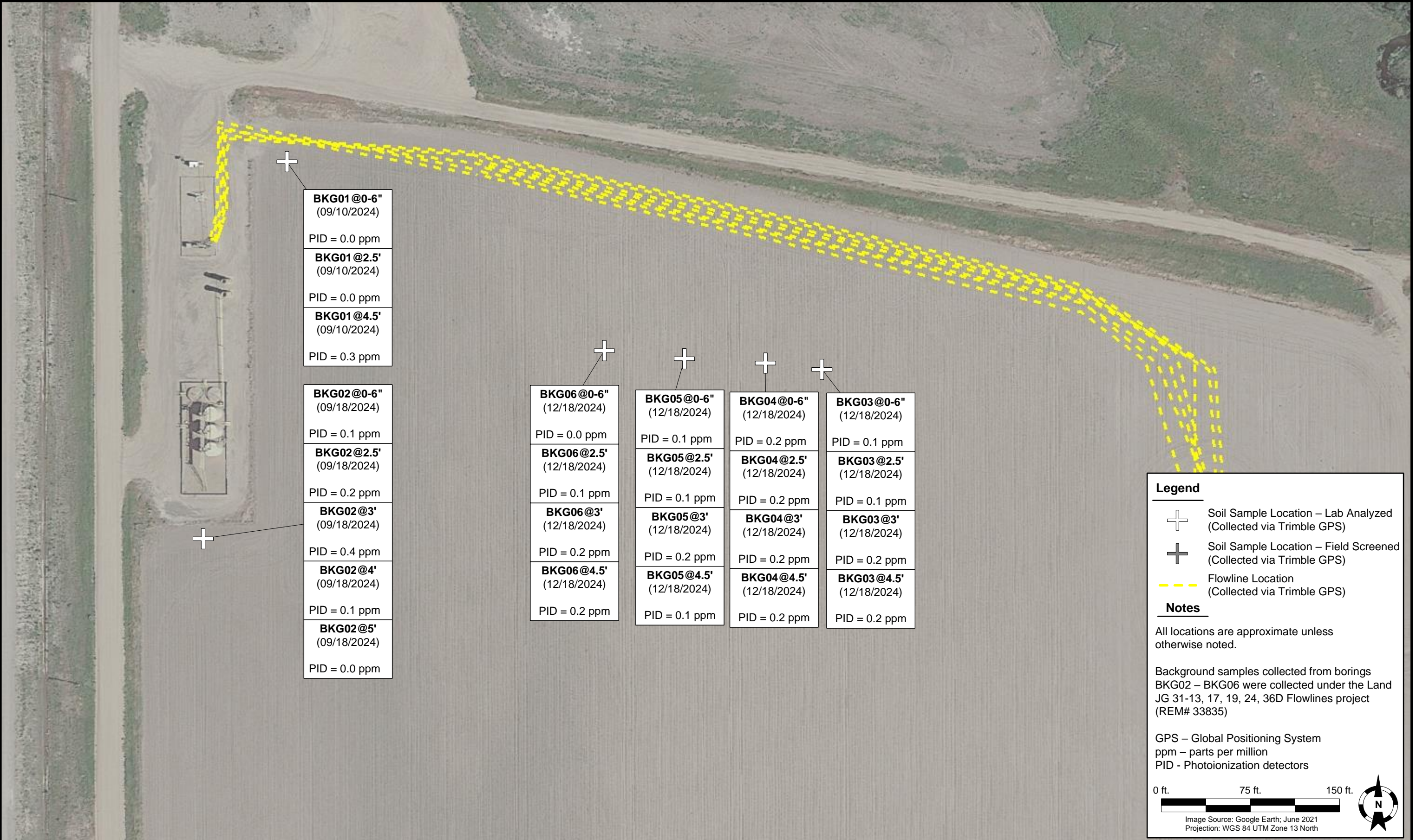
bgs = Below ground surface

**Bold** faced values exceed the ECMC Table 915-1 limit(s), but are within 1.25x background concentrations.

**Bold** faced values exceed the ECMC Table 915-1 limit(s) and native background concentrations.

Red & blue highlighted soil analytical values indicate an exceedance of the referenced soil screening level (SSL).





DATE:	December 18, 2024
DESIGNED BY:	C. Hamlin
DRAWN BY:	L. Reed



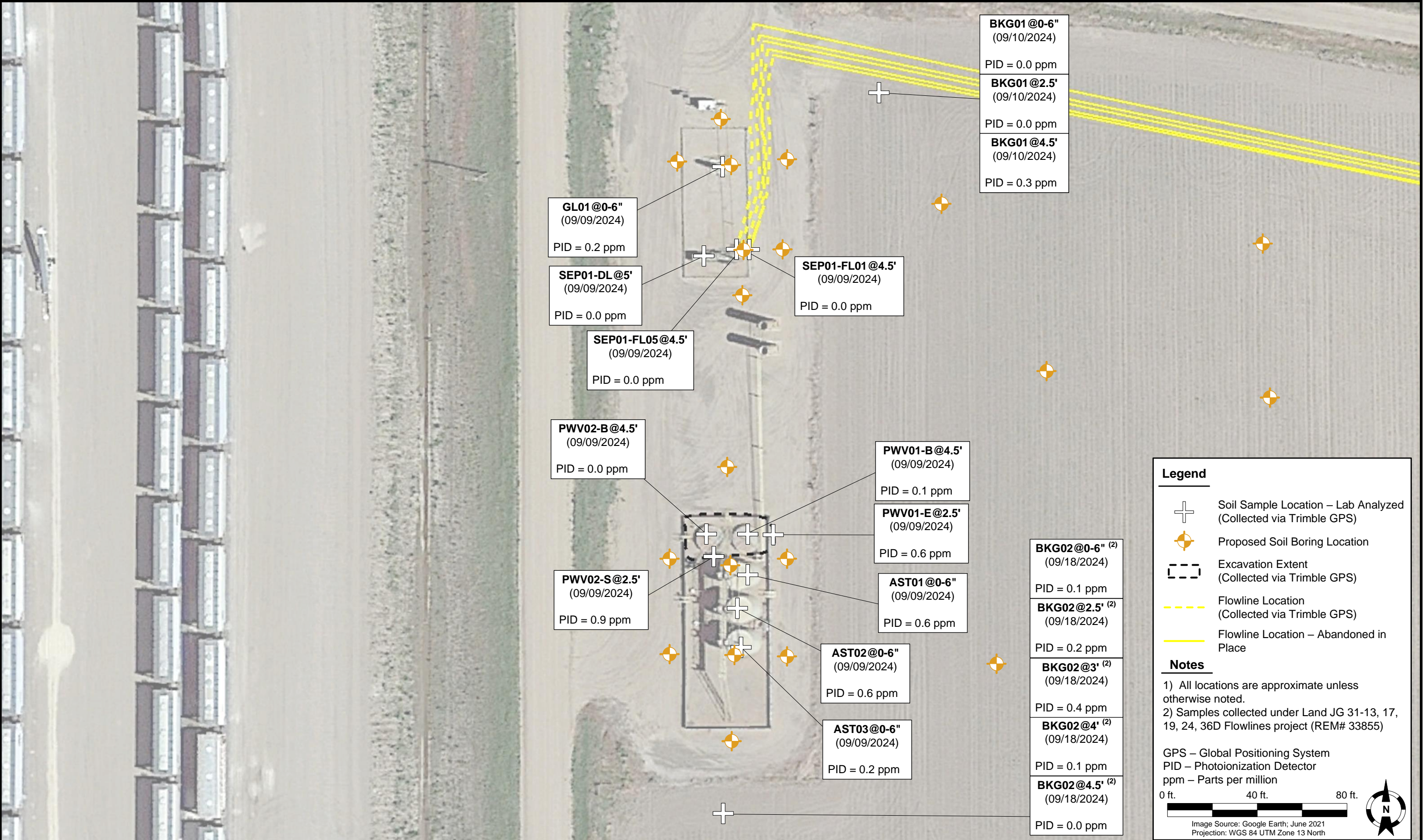
Tasman, Inc.  
6855 W. 119<sup>th</sup> Ave.  
Broomfield, CO 80020

PDC Energy, Inc. – DJ Basin  
Land 31-13, 17, 19, 24, 36D Tank Battery  
SWSW, Section 31, Township 2 North, Range 64 West  
Weld County, Colorado

SOIL SAMPLE MAP  
(BACKGROUNDS)

FIGURE  
1





DATE:	December 4, 2024
DESIGNED BY:	C. Hamlin
DRAWN BY:	J. Marcus



**Tasman, Inc.**  
6855 W. 119<sup>th</sup> Ave.  
Broomfield, CO 80020

**PDC Energy, Inc. – DJ Basin**  
**Former Land 31-13, 17, 19, 24, 36D Tank Battery**  
SWSW, Section 31, Township 2 North, Range 64 West  
Weld County, Colorado

**PROPOSED SOIL BORING  
LOCATION MAP**

**FIGURE  
2**