



Re-sample for Full Table 915-1 Suite

FORMER FLOW LINE

LEGEND

- WELL HEAD LOCATION
- ⊗ SOIL SAMPLE LOCATION
- ABOVE GROUND STORAGE TANK
- FORMER FACILITY
- FORMER FLOW LINE
- FENCE LINE
- CONTAINMENT BERM
- CONTAINMENT WALL

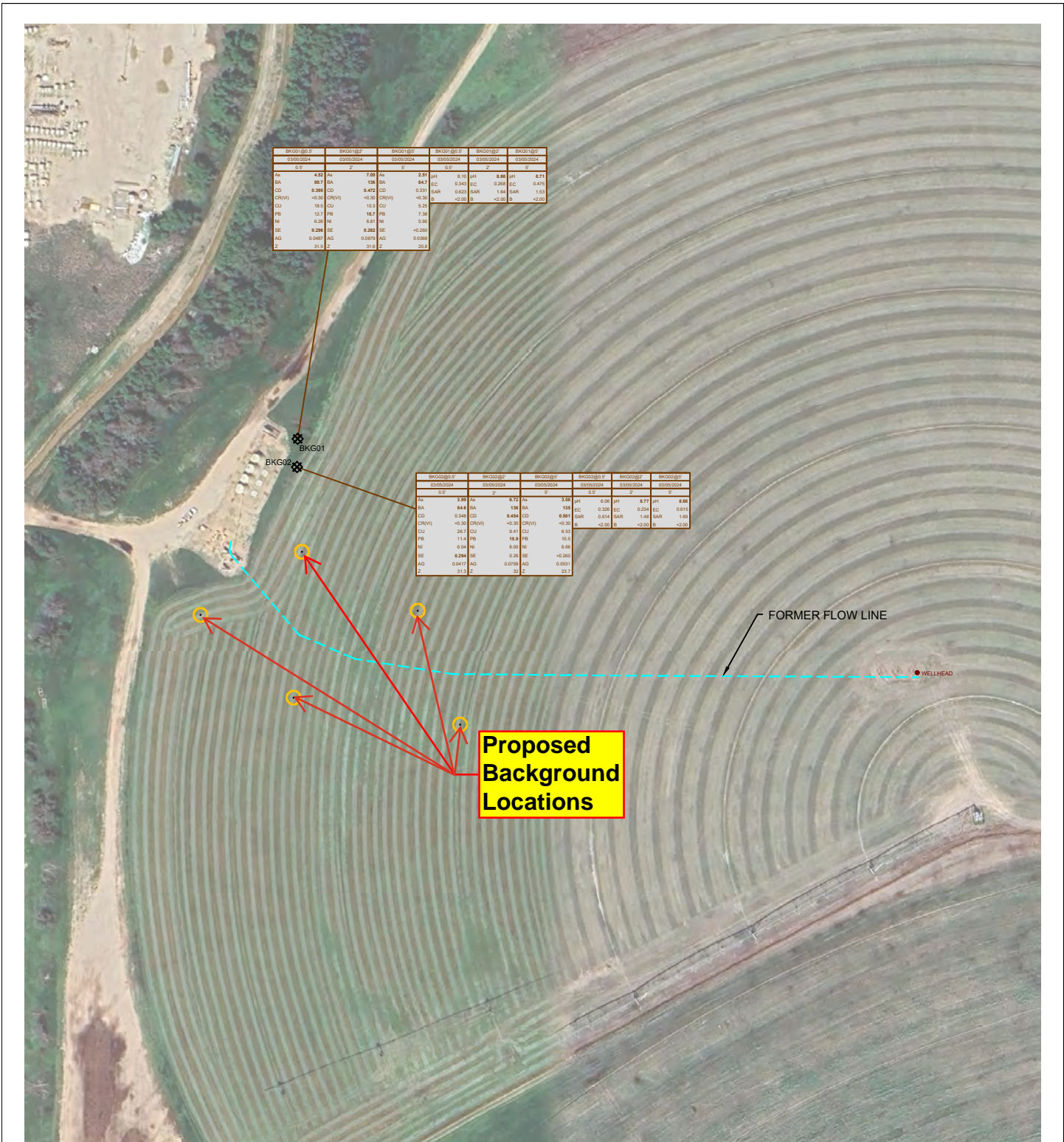
SAMPLE ID	SAMPLE ID	SAMPLE ID	SAMPLE ID	SAMPLE ID	SAMPLE ID
DATE	DATE	DATE	DATE	DATE	DATE
DEPTH	DEPTH (ft)	DEPTH (ft)	DEPTH (ft)	DEPTH (ft)	DEPTH (ft)
ACE	<0.0050	ACENAPHTHENE (mg/kg)	B	<0.0050	BARBITAL (mg/kg)
Ant	<0.0050	ANTHRACENE (mg/kg)	T	<0.0050	BARLIUM (mg/kg)
BaA	<0.0050	BENZO (A) ANTHRACENE (mg/kg)	E	<0.0050	CADMIUM (mg/kg)
BaP	<0.0050	BENZO (B) FLUORANTHENE (mg/kg)	X	<0.010	CHROMIUM (mg/kg)
BF	<0.0050	BENZO (K) FLUORANTHENE (mg/kg)	124TMB	<0.0050	1,2,4-TRIMETHYLBENZENE (mg/kg)
Ch	<0.0050	CHRYSENE (mg/kg)	135TMB	<0.0050	1,3,5-TRIMETHYLBENZENE (mg/kg)
DBA/ANT	<0.0050	DBENZO (A,H) ANTHRACENE (mg/kg)	N	<0.0038	NAPHTHALENE (mg/kg)
FLU	<0.0050	FLUORANTHENE (mg/kg)	G	<0.50	TRH-CRO (mg/kg)
FL	<0.0050	FLUCRENE (mg/kg)	D	<0.50	TRH-CRO (mg/kg)
1123c-PPY	<0.0050	INDENO (1,2,3-CD) PYRENE (mg/kg)			
PY	<0.0050	PYRENE (mg/kg)			
1MN	<0.0050	1-METHYLNAPHTHALENE (mg/kg)			
2MN	<0.0050	2-METHYLNAPHTHALENE (mg/kg)			

Figure 1
Site Investigation Plan

NOBLE ~ HOWARD USX A 09-06D
 SWNW Sec. 9, T6N, R64W, 6th PM
 Weld County, Colorado
 40.504020°, -104.559900°

Project No. CO24-052	API # 05-123-33532	Facility #
Date 2/26/25	Remediation # 31680	Filename 24052Q1





Proposed Background Locations

FORMER FLOW LINE

WELLHEAD

LEGEND

- WELL HEAD LOCATION
- ⊗ SOIL SAMPLE LOCATION
- ABOVE GROUND STORAGE TANK
- FORMER FACILITY
- FORMER FLOW LINE
- FENCE LINE
- CONTAINMENT BERM
- CONTAINMENT WALL

SAMPLE DATE	SAMPLE ID	DEPTH (ft)	SAMPLE DATE	SAMPLE ID	DEPTH (ft)
As	<-0.01	As	<-0.01	As	<-0.01
BA	<-0.01	BA	<-0.01	BA	<-0.01
CD	<-0.01	CD	<-0.01	CD	<-0.01
CR(V)	<-0.01	CR(V)	<-0.01	CR(V)	<-0.01
CU	<-0.01	CU	<-0.01	CU	<-0.01
PB	<-0.01	PB	<-0.01	PB	<-0.01
NI	<-0.01	NI	<-0.01	NI	<-0.01
SE	<-0.01	SE	<-0.01	SE	<-0.01
AG	<-0.01	AG	<-0.01	AG	<-0.01
Z	<-0.01	Z	<-0.01	Z	<-0.01

Figure 2
Proposed Background Sample Locations

NOBLE ~ HOWARD USX A 09-06D
SWNW Sec. 9, T6N, R64W, 6th PM
Weld County, Colorado
40.504020°, -104.559900°

Project No. CO24-052	API # 05-123-33532	Facility #
Date 2/26/25	Remediation # 31680	Filename 24052Q1

