



**RADIAL BOND LOG  
GAMMA RAY  
CCL / VDL / MAP**

Company CHEVRON  
Well BOOTH USX EE 25-01D  
Field WATTENBERG - 90750  
County WELD  
State COLORADO  
Country U.S.A.

Company CHEVRON  
Well BOOTH USX EE 25-01D  
Field WATTENBERG - 90750  
County WELD  
State COLORADO  
Country U.S.A.

Location: AP1 #: 05-123-34373  
SHL: 2388' FNL & 1068' FWL Qtr.Qtr. SWNW  
BHL: 966' FNL & 689' FEL Qtr.Qtr. NENE  
SEC 25 TWP 7N RGE 65W  
Permanent Datum Ground Level Elevation 4820'  
Log Measured From K.B. 13'  
Drilling Measured From K.B. 13'

Other Services  
Elevation  
K.B. 4833'  
D.F. 4832'  
G.L. 4820'

|                        |                     |
|------------------------|---------------------|
| Date                   | September 9th, 2024 |
| Run Number             | 1                   |
| Depth Driller          | 8431'               |
| Depth Logger           | 3015'               |
| Bottom Logged Interval | 3007'               |
| Top Log Interval       | SURFACE             |
| Open Hole Size         | 7 7/8"              |
| Type Fluid             | FRESH WATER         |
| Density / Viscosity    | 8.3#                |
| Max. Recorded Temp.    | N/A                 |
| Estimated Cement Top   | N/A                 |
| Time Well Ready        | N/A                 |
| Time Logger on Bottom  | N/A                 |
| Equipment Number       | DSSHSR20-002        |
| Location               | MILLIKEN, CO        |
| Recorded By            | J. MICHAEL          |
| Witnessed By           | MR. BOBBY ESPINOSA  |

| Borehole Record |     | Tubing Record |    |      |        |      |    |
|-----------------|-----|---------------|----|------|--------|------|----|
| Run Number      | Bit | From          | To | Size | Weight | From | To |
|                 |     |               |    |      |        |      |    |
|                 |     |               |    |      |        |      |    |
|                 |     |               |    |      |        |      |    |
|                 |     |               |    |      |        |      |    |
|                 |     |               |    |      |        |      |    |
|                 |     |               |    |      |        |      |    |
|                 |     |               |    |      |        |      |    |
|                 |     |               |    |      |        |      |    |
|                 |     |               |    |      |        |      |    |

|                   |        |        |         |        |
|-------------------|--------|--------|---------|--------|
| Casing Record     | Size   | Wgt/Ft | Top     | Bottom |
| Surface String    | 8 5/8" | 24#    | SURFACE | 700'   |
| Prot. String      |        |        |         |        |
| Production String | 4-1/2" | 11.6#  | SURFACE | 8421'  |
| Liner             |        |        |         |        |

<<< Fold Here >>>

All interpretations are opinions based on inferences from electrical or other measurements and we cannot and do not guarantee the accuracy or correctness of any interpretation, and we shall not, except in the case of gross or willful negligence on our part, be liable or responsible for any loss, costs, damages, or expenses incurred or sustained by anyone resulting from any interpretation made by any of our officers, agents or employees. These interpretations are also subject to our general terms and conditions set out in our current Price Schedule.

**Comments**

**NO CORRELATION LG AVAILABLE**

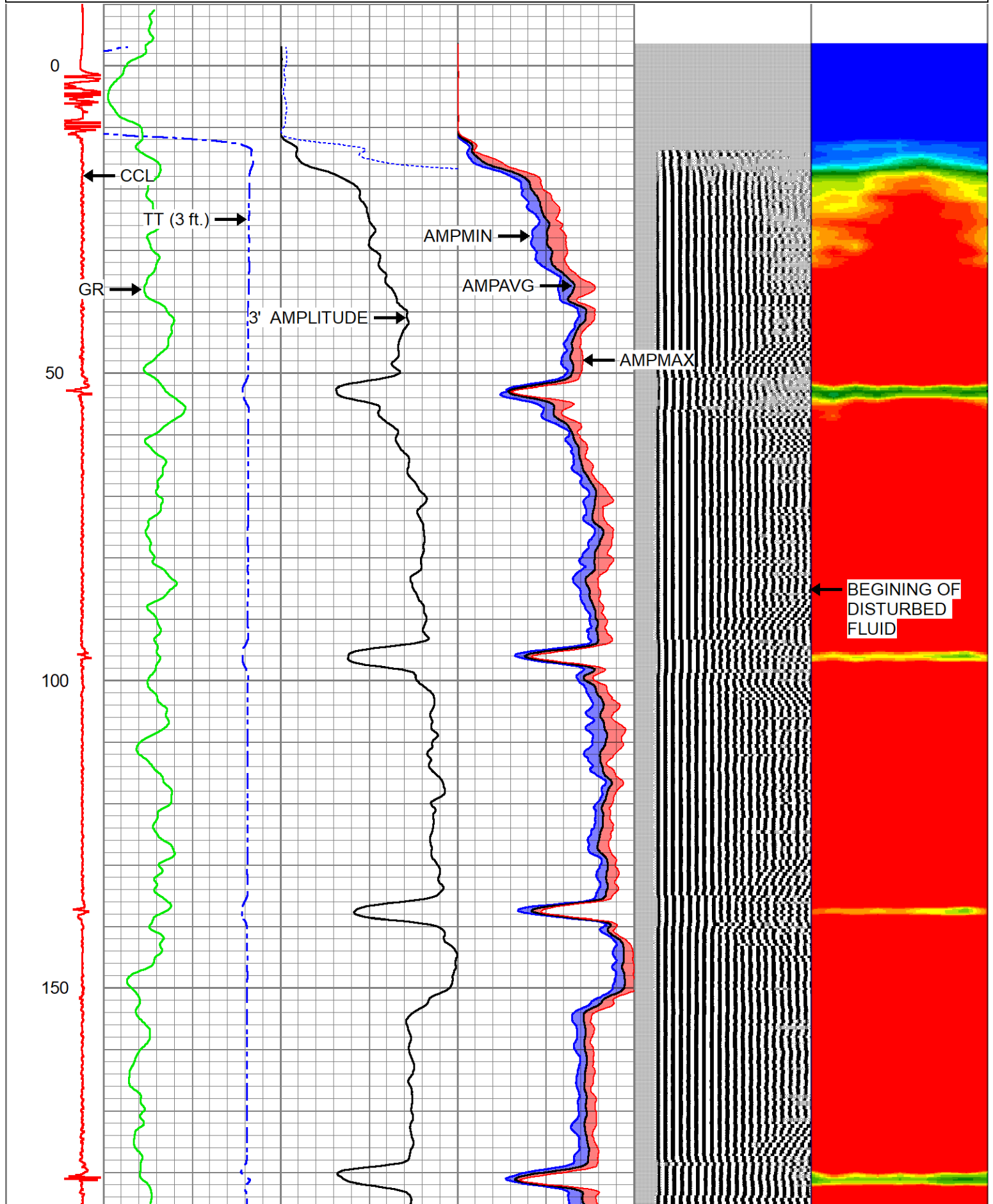
| Sensor | Offset (ft) | Schematic | Description                                   | Length (ft) | O.D. (in) | Weight (lb) |
|--------|-------------|-----------|---|-------------|-----------|-------------|
|        |             |           | Cable_Head-1_7/16<br>Titan 1 7/16" Cable Head | 1.02        | 1.44      | 3.31        |

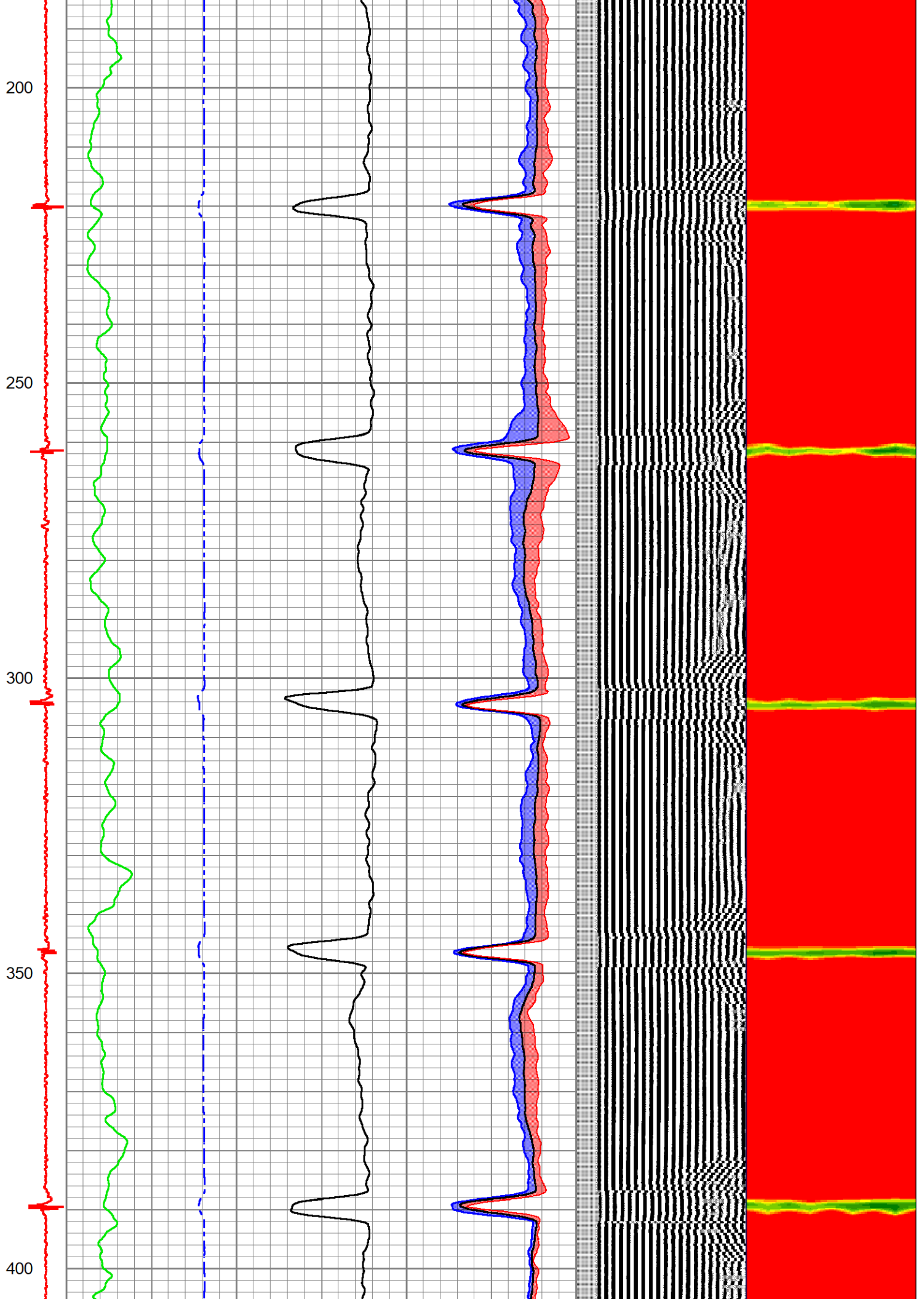
|         |       |  |   |      |      |       |
|---------|-------|--|---|------|------|-------|
|         |       |  | Centralizers-Sondex PRC 2.75" Roller<br>Centralizers<br>Tekco 2 3/4" Adjustable Centralizer | 3.00 | 2.75 | 25.00 |
| CCL     | 0.00  |  |   |      |      |       |
| TCF     | 0.00  |  |   |      |      |       |
| GRHV    | 0.94  |  |   |      |      |       |
| GR      | 0.94  |  |   |      |      |       |
|         |       |  | DSS_HSR_ELE-DSS_HSR_20_ELE (HSR20<br>0000)<br>DSS 2 3/4" HSR Bond tool - Electronics Module | 4.81 | 2.75 | 61.00 |
| ROTV    | 4.10  |  |   |      |      |       |
| THV     | 4.10  |  |   |      |      |       |
| INTEMP  | 4.10  |  |   |      |      |       |
| PNEG    | 4.10  |  |   |      |      |       |
| PPOS    | 4.10  |  |   |      |      |       |
| WVFS8   | 6.09  |  |   |      |      |       |
| WVFS7   | 6.09  |  |   |      |      |       |
| WVFS6   | 6.09  |  |   |      |      |       |
| WVFS5   | 6.09  |  |   |      |      |       |
| WVFS4   | 6.09  |  |   |      |      |       |
| WVFS3   | 6.09  |  | DSS_HSR_SND-DSS_HSR_20_SND (HSR20<br>0000)<br>DSS 2 3/4" HSR Bond tool - Sonde Module       | 7.70 | 2.75 | 86.00 |
| WVFS2   | 6.09  |  |   |      |      |       |
| WVFS1   | 6.09  |  |   |      |      |       |
| WVFCAL  | 6.59  |  |   |      |      |       |
| WVF3FT  | 6.59  |  |   |      |      |       |
| WVF5FT  | 7.59  |  |   |      |      |       |
| TEMP    | 11.67 |  |   |      |      |       |
| WVFSYNC | 11.80 |  |   |      |      |       |
|         |       |  | Centralizers-Sondex PRC 2.75" Roller<br>Centralizers<br>Tekco 2 3/4" Adjustable Centralizer | 3.00 | 2.75 | 25.00 |

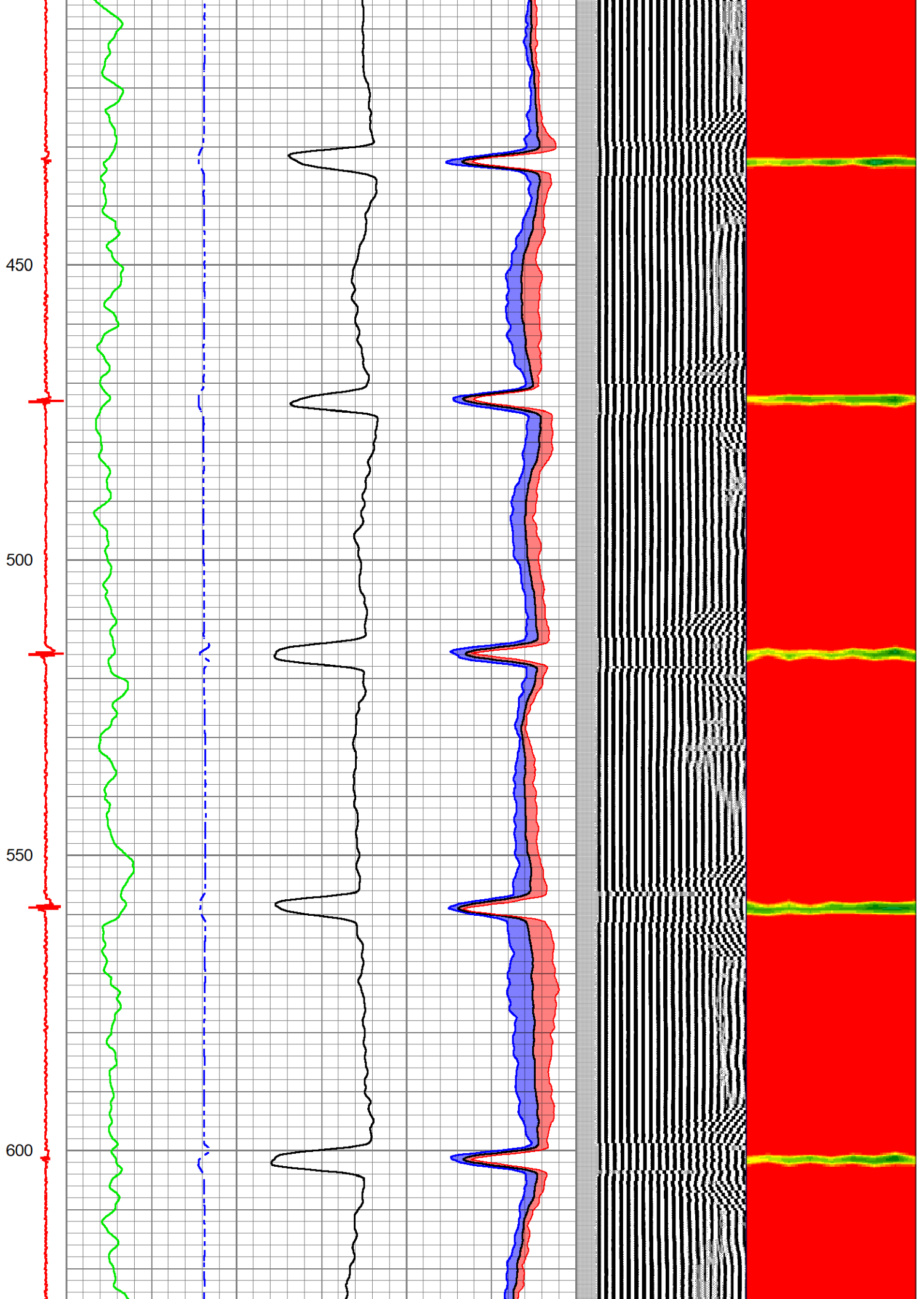
Dataset: chevron-booth usx ee 25-01d.db: WATTENBERG-90750/BOOTH\_USX\_EE\_25-01D/DSSHRSR20-002/RBL.1  
 Total length: 19.52 ft  
 Total weight: 200.31 lb  
 O.D.: 2.75 in

Database File chevron-booth usx ee 25-01d.db  
 Dataset Pathname WATTENBERG-90750/BOOTH\_USX\_EE\_25-01D/DSSHRSR20-002/RBL.1  
 Presentation Format ranger\_dss\_radial  
 Dataset Creation Mon Sep 09 17:26:18 2024  
 Charted by Depth in Foot scaled 1:240

|            |            |           |              |                 |      |        |        |             |     |     |            |      |
|------------|------------|-----------|--------------|-----------------|------|--------|--------|-------------|-----|-----|------------|------|
| CCL        | TT (3 ft.) |           | 3' AMPLITUDE |                 | 0    | AMPMIN | 100    | VDL (5 ft.) |     | 1   | RADIAL MAP | 8    |
| -200020000 | 350        | (usec)    | 175          | 0               | (mV) | 100    | 0      | AMPAVG      | 100 | 200 | (usec)     | 1200 |
|            | 0          | GR (GAPI) | 150          | 3' Amplitude x5 |      | 0      | AMPMAX | 100         |     |     |            |      |
|            |            |           |              | 0               | (mV) | 20     |        |             |     |     |            |      |





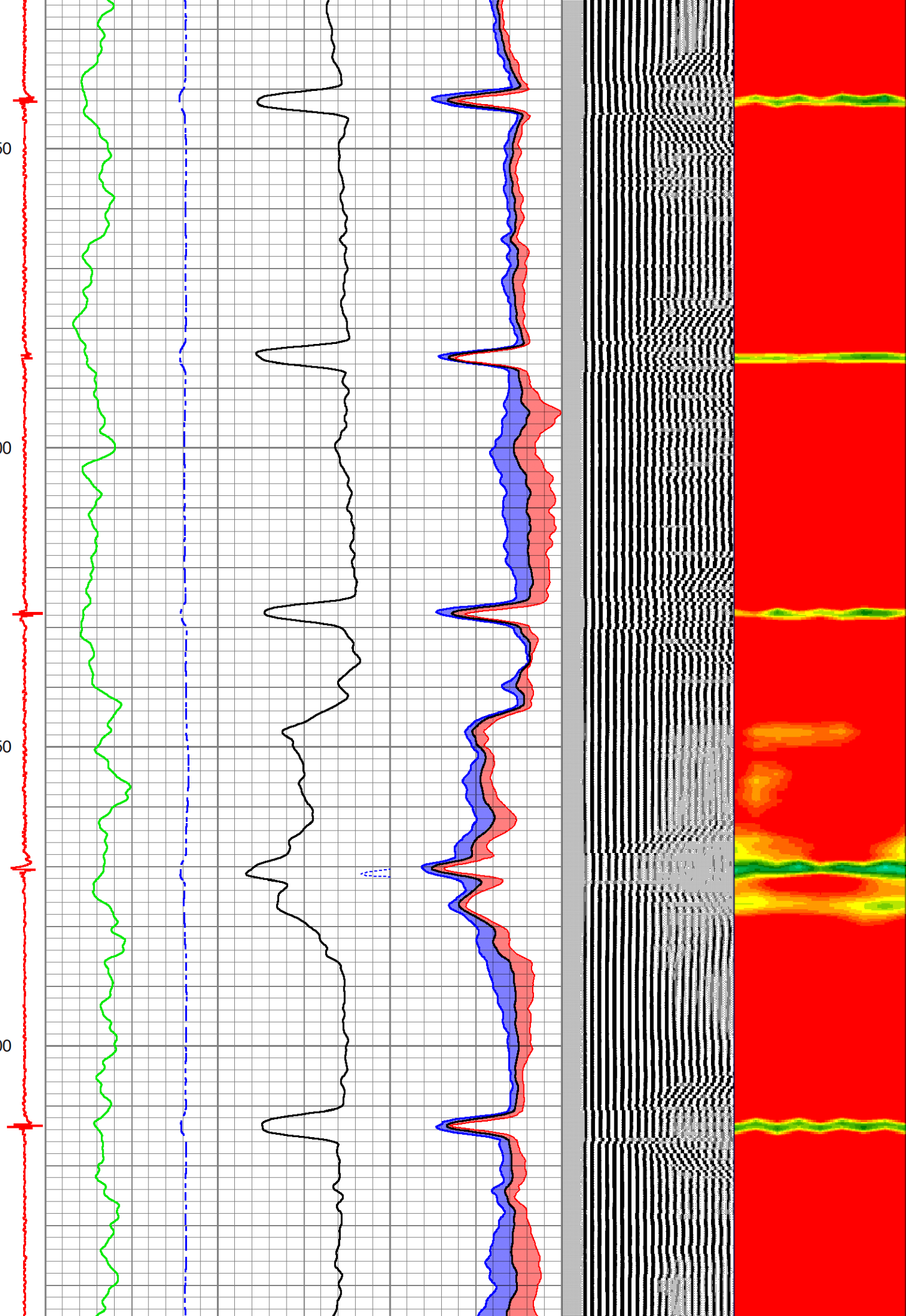


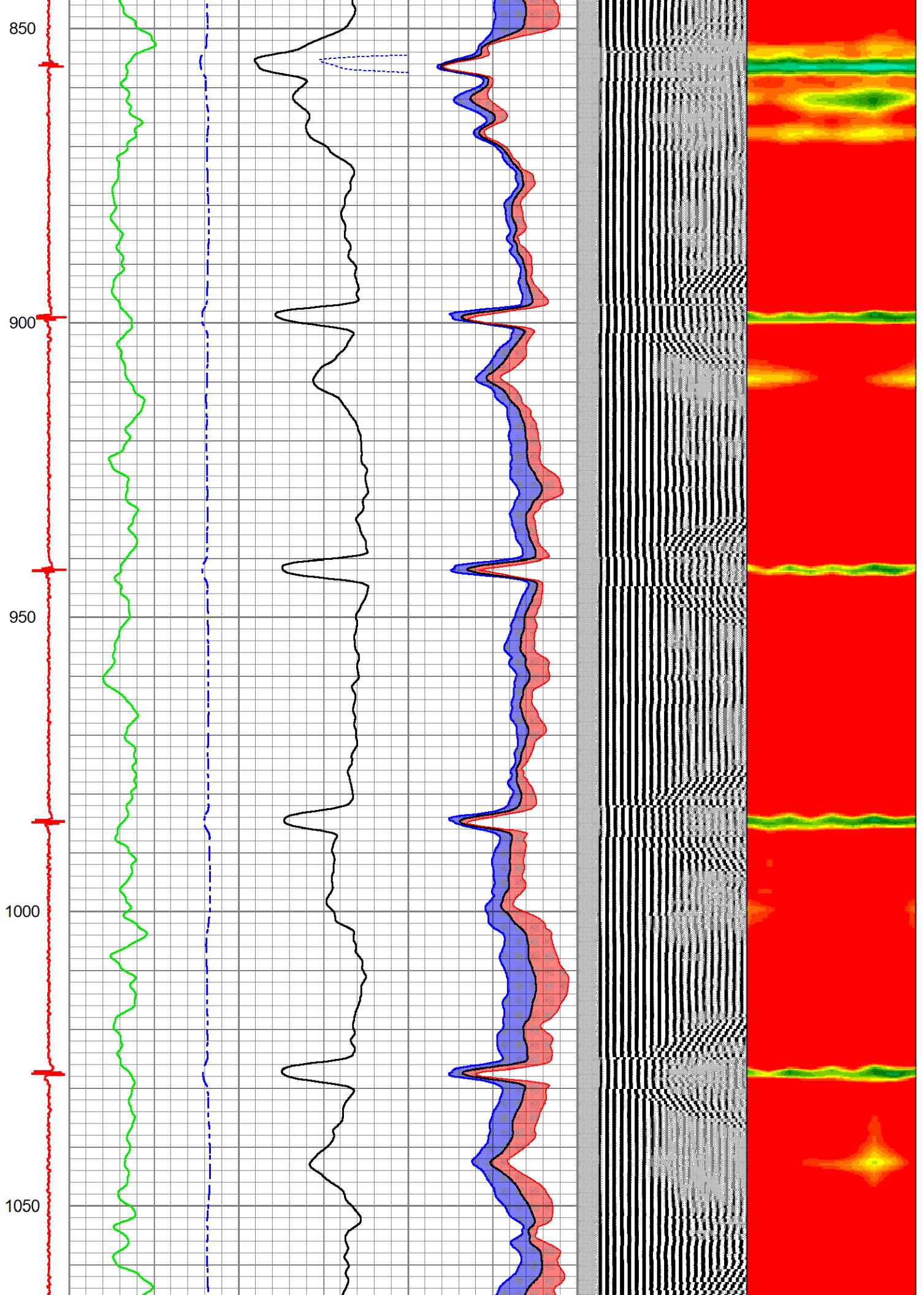
650

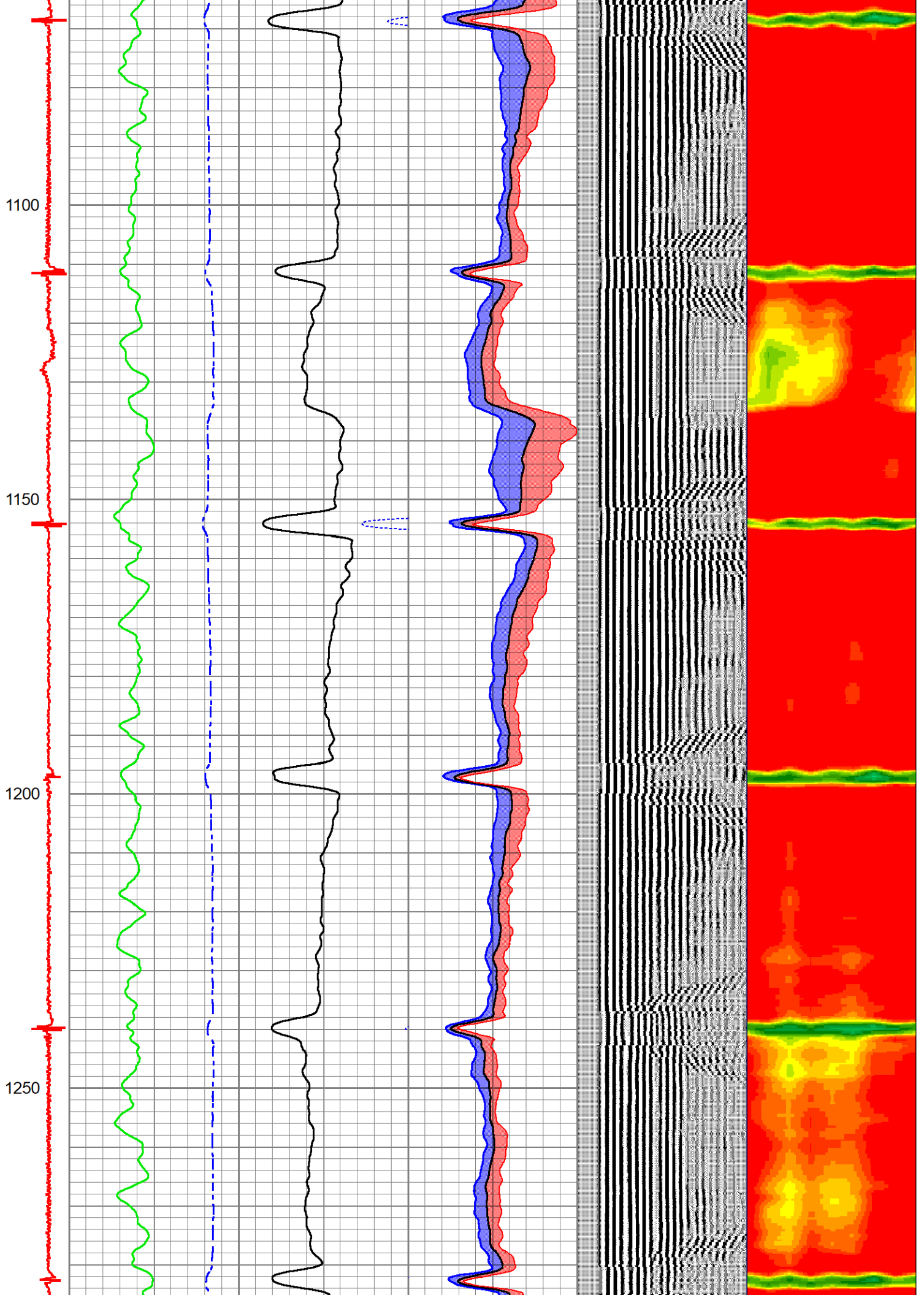
700

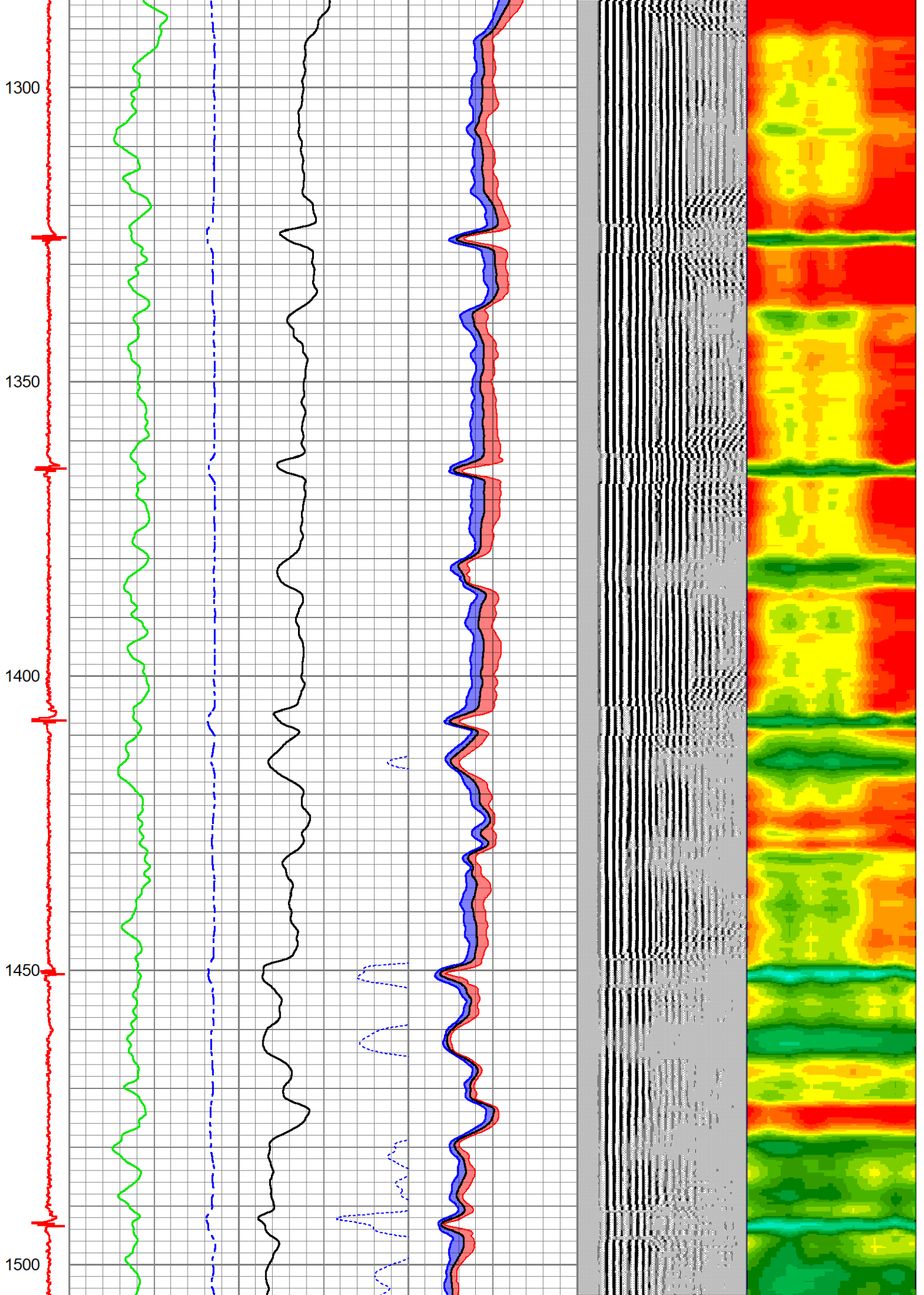
750

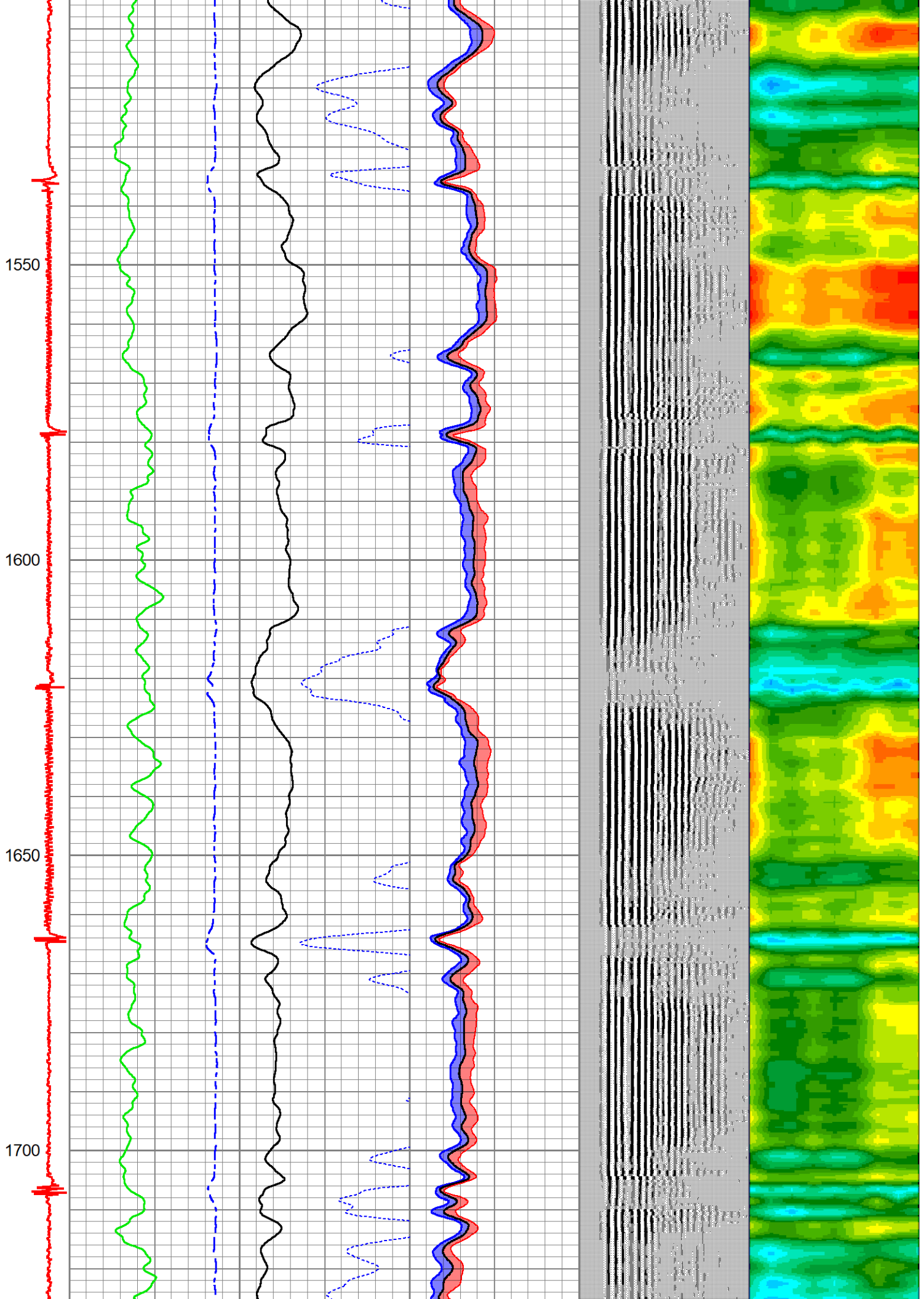
800

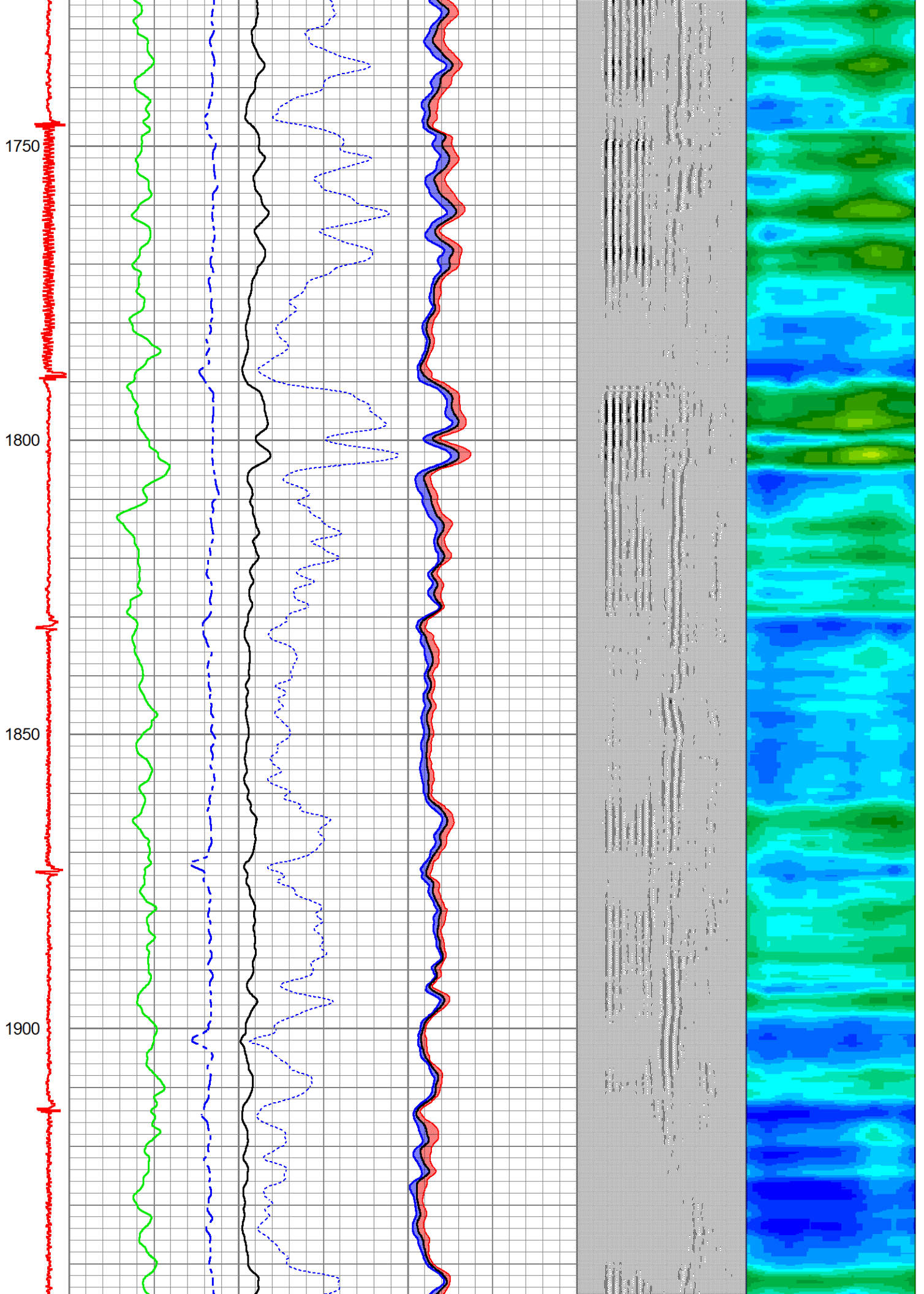


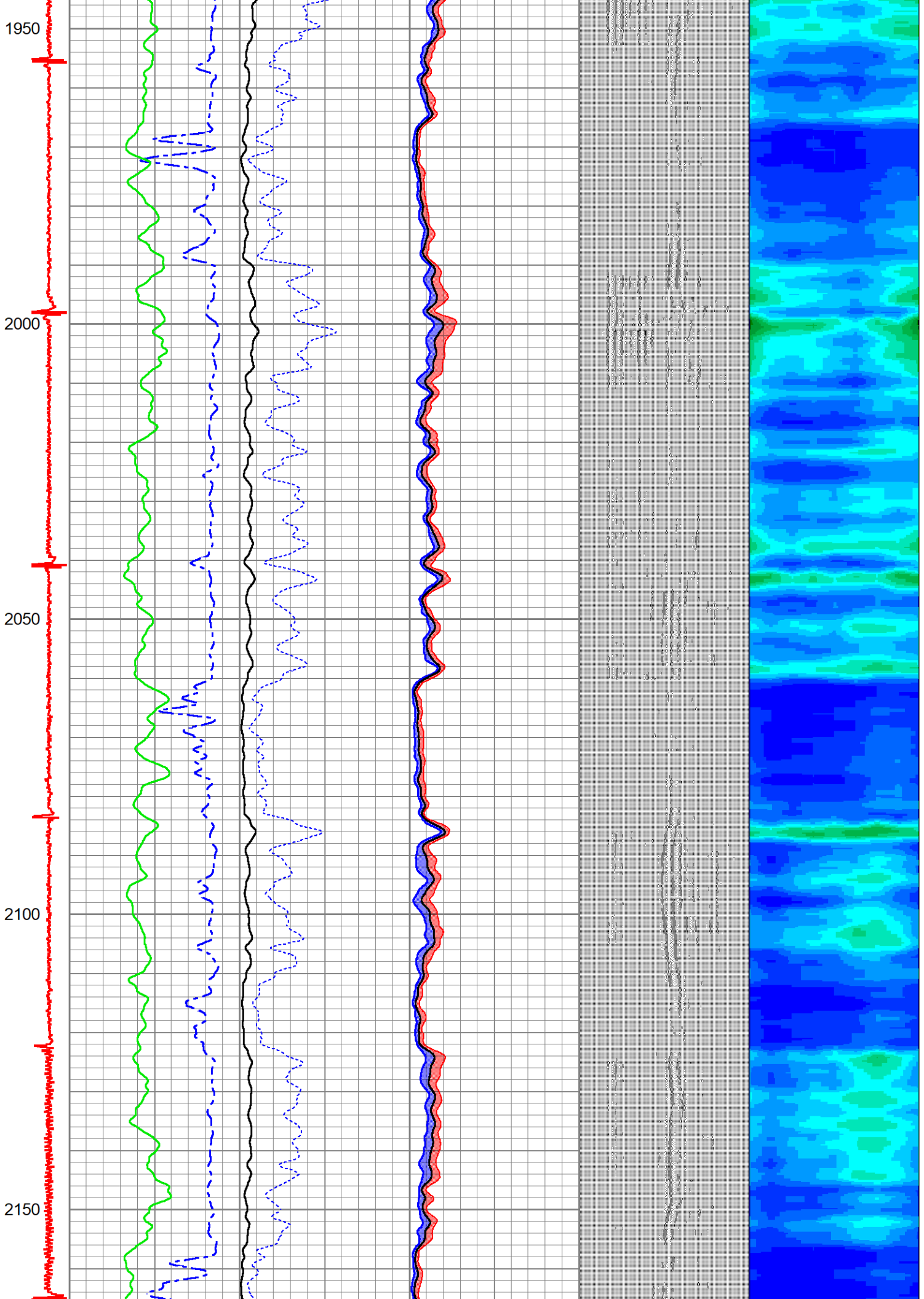


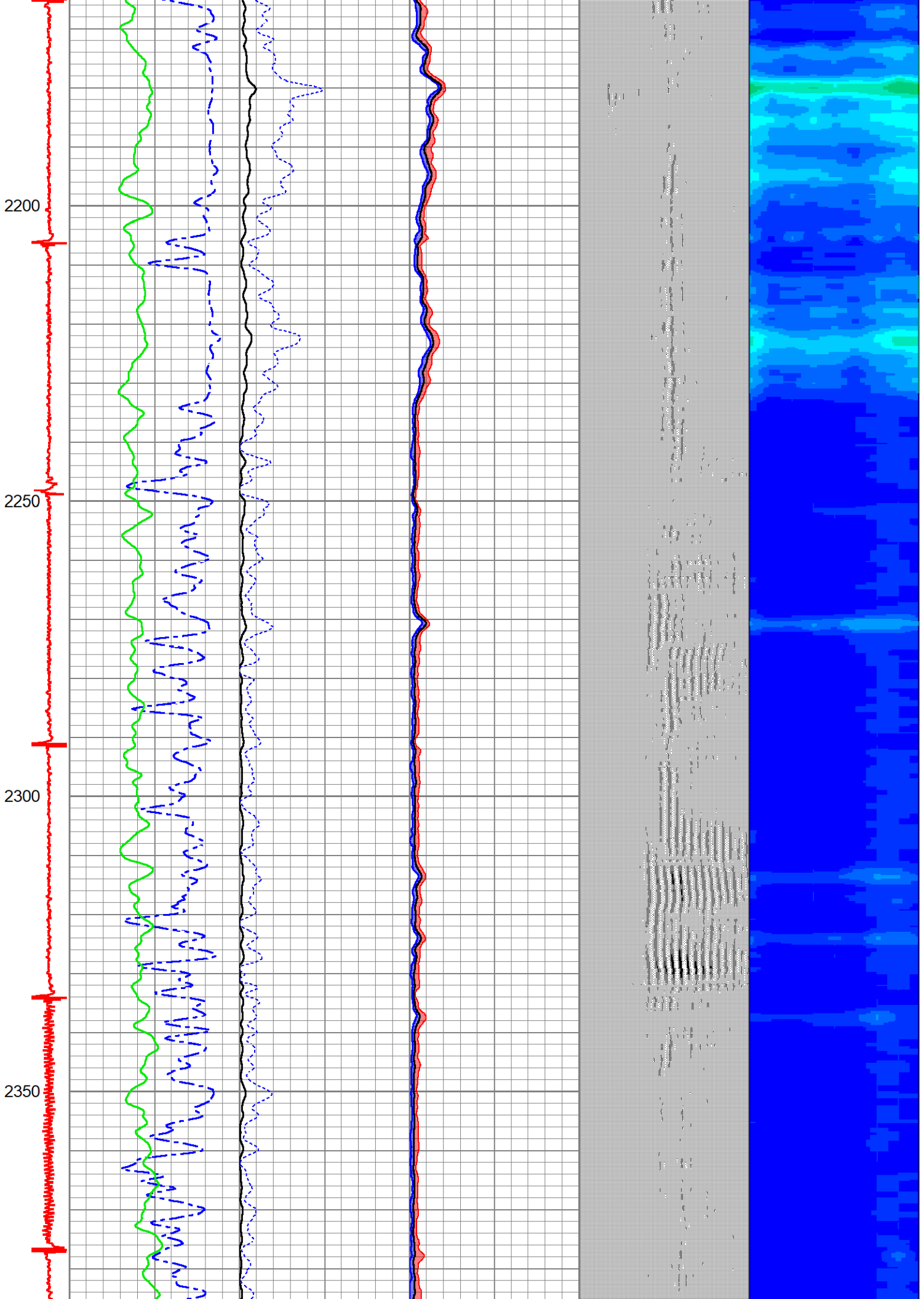




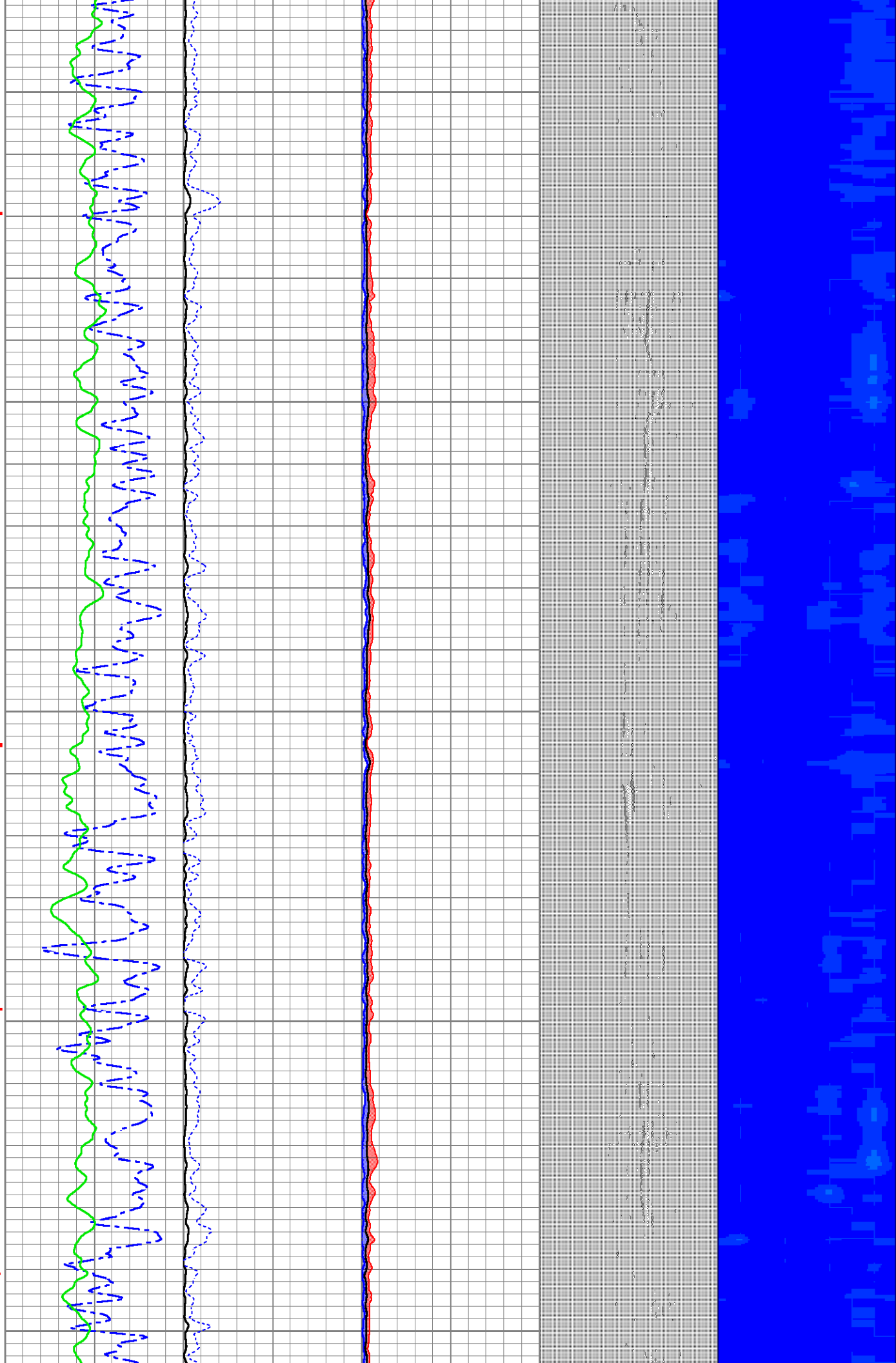


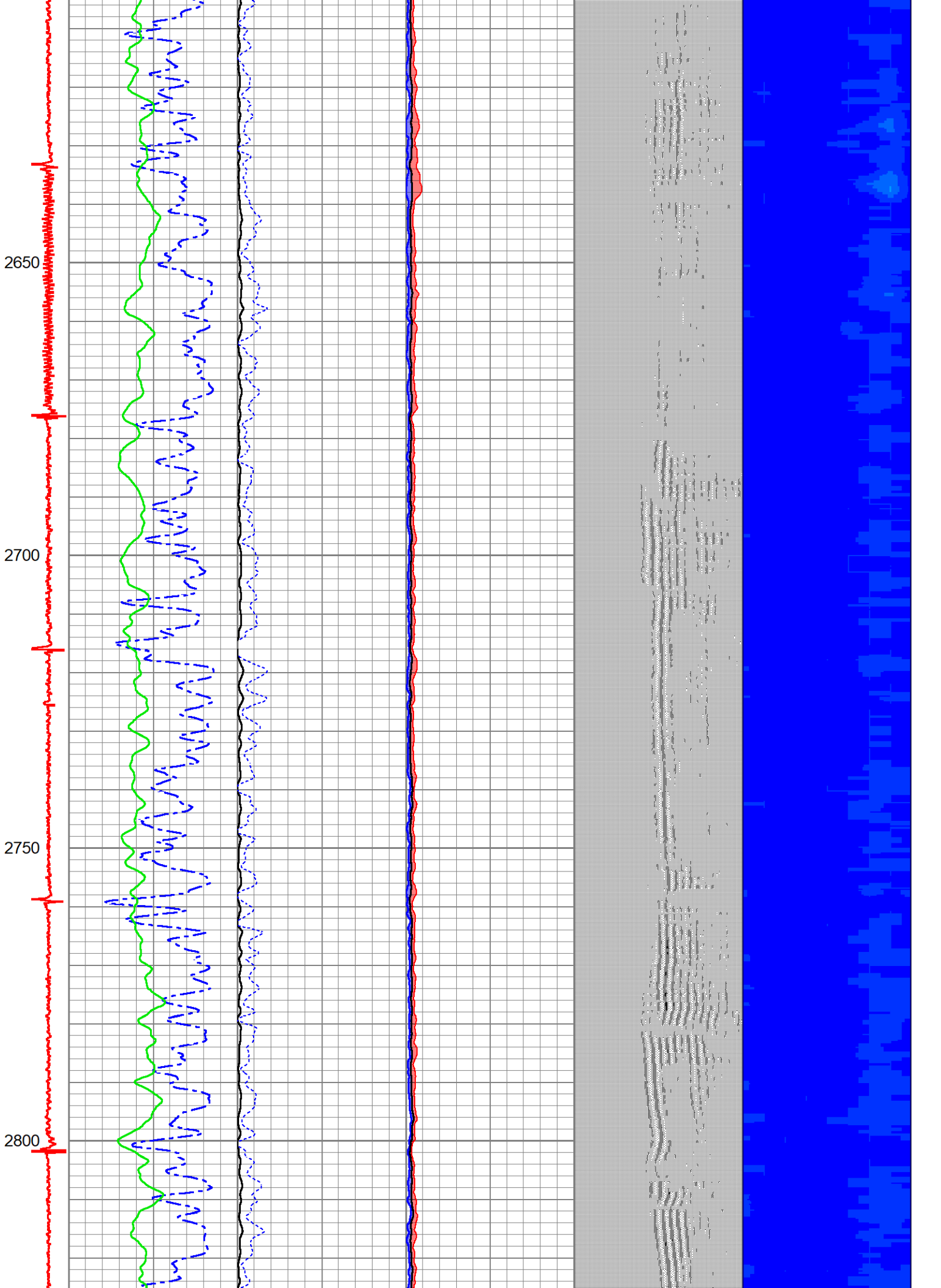






2400  
2450  
2500  
2550  
2600



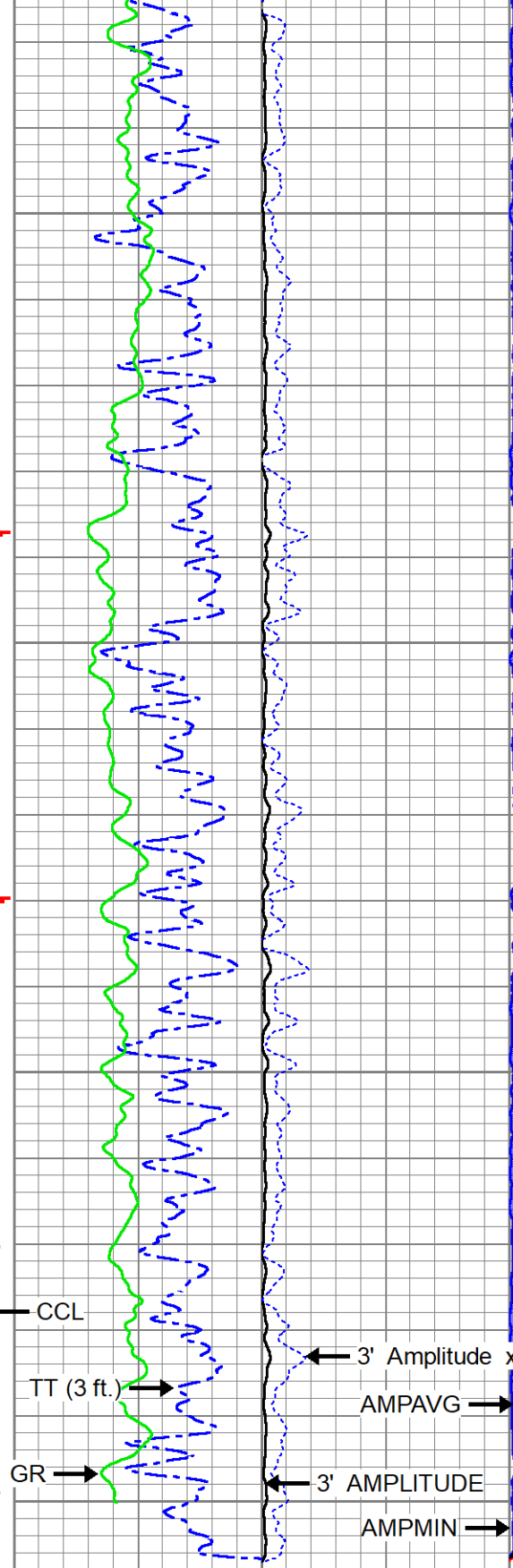


2850

2900

2950

3000



CCL

TT (3 ft.)

GR

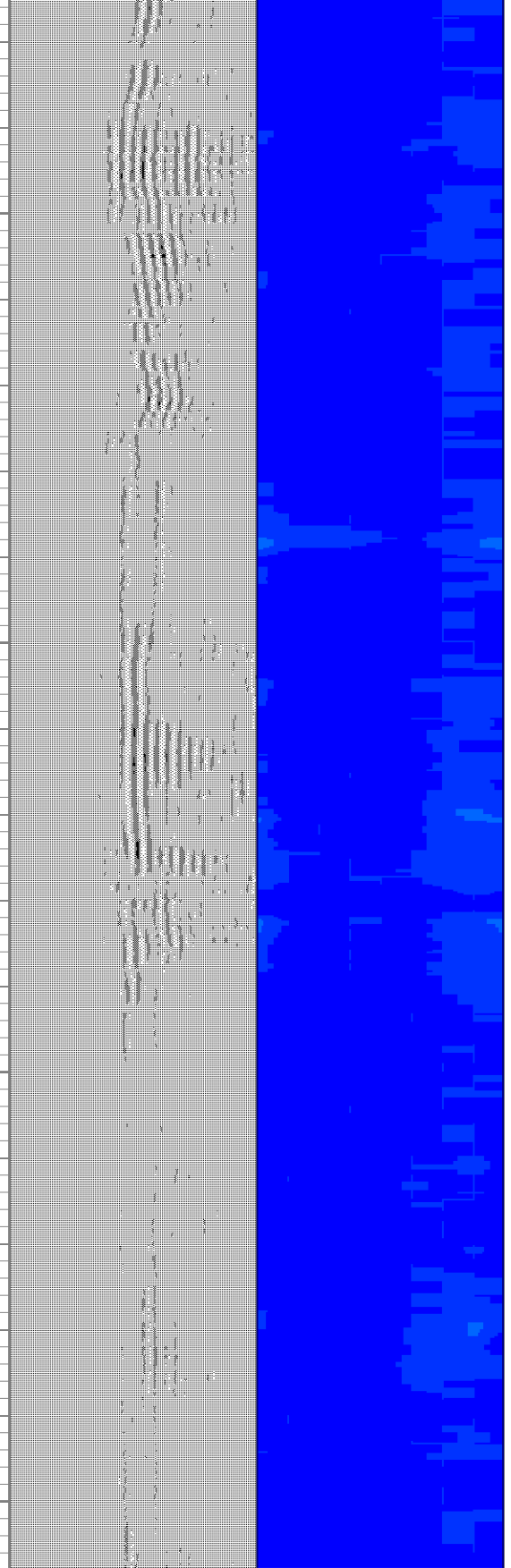
3' Amplitude x5

AMPAVG

3' AMPLITUDE

AMPMIN

AMPMAX



VDL (5 ft.)

(usec)

1 RADIAL MAP 8

4 50

|             |                |                 |   |        |     |                 |   |            |    |
|-------------|----------------|-----------------|---|--------|-----|-----------------|---|------------|----|
| CCL         | TT (3 ft.)     | 3' AMPLITUDE    | 0 | AMPMIN | 100 | VDL (5 ft.)     | 1 | RADIAL MAP | 8  |
| -2000 20000 | 350 (usec) 175 | (mV) 100        | 0 | AMPAVG | 100 | 200 (usec) 1200 | 4 |            | 50 |
|             | GR (GAPI) 150  | 3' Amplitude x5 | 0 | AMPMAX | 100 |                 |   |            |    |
|             |                | (mV) 20         | 0 |        |     |                 |   |            |    |



|                |                     |                       |
|----------------|---------------------|-----------------------|
| <b>Company</b> | CHEVRON             |                       |
| <b>Well</b>    | BOOTH USX EE 25-01D |                       |
| <b>Field</b>   | WATTENBERG - 90750  |                       |
| <b>County</b>  | WELD                |                       |
| <b>State</b>   | COLORADO            | <b>Country</b> U.S.A. |