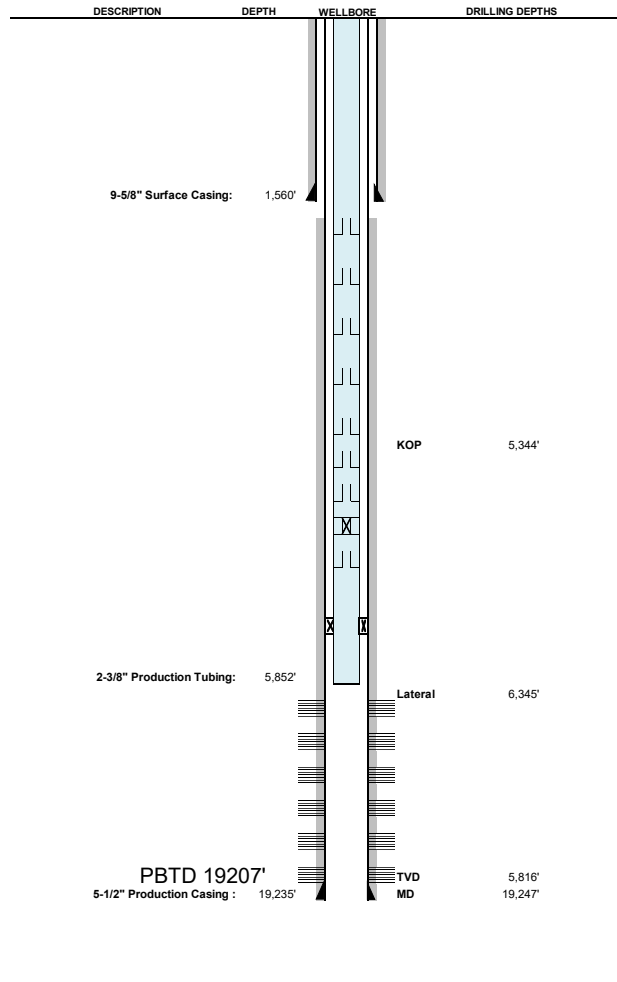


Speed Goat Fed 3432-02H



WELL: Speed Goat Fed 3432-02H		Date 2/4/2025									
LOCATION: NENE 34 9N 58W 6 247 FNL 961 FEL											
County: Weld											
FORMATION: Nio C											
API #: 05-123-52501											
Field: DJ Horizontal NBRR-FH-CODL-CL											
Spud: 04/17/24											
Current Status: Producing											
Well Type Horizontal											
Well Length XXRL											
Casing and Tubular Data											
<u>Type</u>	<u>Hole Size</u>	<u>Pipe Size</u>	<u>Grade</u>	<u>Weight</u>	<u>Pipe Top</u>	<u>Setting Depth</u>	<u>Sacks Cmt</u>	<u>Cmt Btm</u>	<u>Cmt Top</u>	<u>Slurry Yield</u>	<u>Slurry Weight</u>
Conductor	26	16	ASTM	65.0 ppf	0'	80'	92	80'	0'	2. ft3/sack	14.0 ppg
Surface	13 1/2	9 5/8	J55	36.0 ppf	0'	1,560'	697	1,560'	0'	1.6 ft3/sack	13.9 ppg
Production	8 1/2	5 1/2	P110	20.0 ppf	0'	19,235'	2,785	19,235'	2,162'	1.6 ft3/sack	13.2 ppg
Tubing	n/a	2 3/8	L80	4.6 ppf	0'	5,852'	n/a	n/a	n/a	n/a	n/a
Perf Depths											
6,376'		to		19,092'							
Formation Tops											
Fox Hills		21 ft									
Niobrara		5,752 ft									
Codell		n/a ft									
Additional Information											
Completion Type		Plug & Perf									
Lift Type		Flowing									
Last Workover		n/a									
Elevation Data											
GL		4722 feet									
KB		4743 feet									
Difference		21 feet									
Tubing BHA											