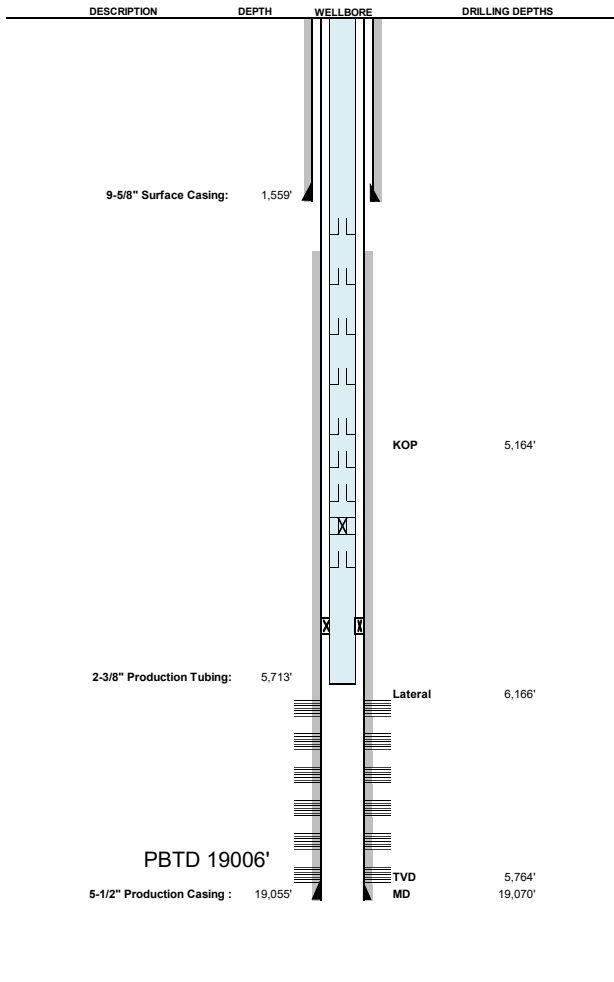


Speed Goat Fed 3432-01H



Date 2/4/2025



WELL: Speed Goat Fed 3432-01H
LOCATION: NENE 34 9N 58W 6
 231 FNL 961 FEL
County: Weld
FORMATION: Nio B
API #: 05-123-52496
Field: DJ Horizontal NBRR-FH-CODL-CL
Spud: 04/17/24
Current Status: Producing
Well Type Horizontal
Well Length XXRL

Casing and Tubular Data

Type	Hole Size	Pipe Size	Grade	Weight	Pipe Top	Setting Depth	Sacks Cmt	Cmt Btm	Cmt Top	Slurry Yield	Slurry Weight
Conductor	26	16	ASTM	65.0 ppf	0'	80'	92	80'	0'	2. ft3/sack	14.0 ppg
Surface	13 1/2	9 5/8	J55	36.0 ppf	0'	1,559'	698	1,559'	0'	1.6 ft3/sack	13.9 ppg
Production	8 1/2	5 1/2	P110	20.0 ppf	0'	19,055'	2,615	19,055'	3,226'	1.6 ft3/sack	13.2 ppg
Tubing	n/a	2 3/8	L80	4.6 ppf	0'	5,713'	n/a	n/a	n/a	n/a	n/a

Perf Depths
 6,197' to 18,910'

Formation Tops

Fox Hills	21 ft
Niobrara	5,766 ft
Codell	n/a ft

Additional Information
Completion Type Plug & Perf
Lift Type Flowing
Last Workover n/a

Elevation Data

GL	4722	feet
KB	4743	feet
Difference	21	feet

Tubing BHA