

FL01R-S@4'
(09/05/2024)
PID = 0.0 ppm

FL01-03@4'
(09/04/2024)
PID = 0.2 ppm

FL01-02@3'
(08/28/2024)
PID = 0.1 ppm

FL01-01@3'
(08/28/2024)
PID = 0.1 ppm

BKG01@3'
(08/28/2024)
PID = 0.4 ppm

BKG01@4'
(08/28/2024)
PID = 0.4 ppm

BKG01@5'
(08/28/2024)
PID = 0.5 ppm

FL01R-W@5'
(08/27/2024)
PID = 0.2 ppm

BKG06

BH01

BH02

BH05

BH03

BH04

BKG05

BKG04

BKG03

BKG02

BH07







BH06

BH10

BH08

BH09

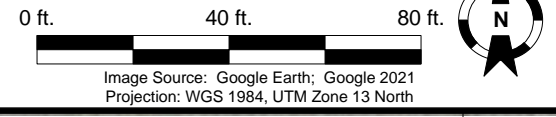
Legend

-  Soil Sample Location – Lab Analyzed (Collected via Trimble GPS)
-  Soil Sample Location – Field Screen (Collected via Trimble GPS)
-  Proposed Soil Boring
-  Flowline Location (Collected via Trimble GPS)
-  Flowline Location – Pending Removal
-  Dirt Stock Pile Extent (Collected via Trimble GPS)

Notes

1) All locations are approximate unless otherwise noted.

GPS – Global Positioning System
 PID – Photoionization Detector
 ppm – Parts per million



DATE:	February 4, 2025
DESIGNED BY:	J. Whritenour
DRAWN BY:	L. Buck



TASMAN Tasman, Inc.
 6855 W 119th Avenue
 Broomfield, CO 80020

Noble Energy, Inc. – 100322 – DJ Basin
Former Frico 20-15 Flowline
 NWSW, Section 15, Township 3 North, Range 65 West
 Weld County, Colorado

Proposed Soil Boring
 Location Map
 (Flowline)

FIGURE
 1