



ALTITUDE

ENERGY PARTNERS

Country : USA

Field : WATTENBURG

Location : 304.729755"N

: 104.638753"W

Well : PROSPER FARMS 4-6S 2-1-6 I

Company : CIVITAS

Rig : 672

LOCATION

Sec. 2 Typ. 4S Range: W

Latitude : -39.729755N

Longitude : -104.638753W

ARAPAHOE COUNTY

Company : CIVITAS

Rig : 672

Well : PROSPER FARMS 4-6S 2-1-6 1BH

County/Parish : WATTENBURG

State/Province : ARAPAHOE

Country : USA

Well ID : 05-005-07515

Other Services:

Depth Logged : 3572

Date Logged : 3/6/2023

Start Date : 3/6/2023

End Date : 3/6/2023

[illegible]

Begin Log Date	2023-03-11				
Begin Log Time	08:04:17				
End Log Date	2023-03-14				
End Log Time	10:53:26				
LWD Engineer	DOUS RUSCO				
Oil Company Rep					
DRILLING FLUID SUMMARY					
Mud Type	OBM				

[illegible]

Chlorides	50000				
Oil/Water Ratio	81/19				
Maximum Circ Temp (F)	283				
CORRECTIONS					
Log Run	4				
Bit Run	4				
Start Date/Time	2023-03-11 08:06:35				
Start Depth (ft)	14874.94				
End Date/Time					
End Depth (ft)	no end depth				
Gamma Ray Corrections					
Collar Correction	2.228				
Mud Density (lb/gal)	12				
Mud Correction	1.561				
Calibration	1.35				
%K	0				
WPR Corrections					
Effective Hole Diam (in)	8.5				
Surface Rm (ohm-m)	1000				
Surface Mud Temp (F)	75				
Bottom Hole Circ Temp (F)	125				
Rm @ BHT	620.349				

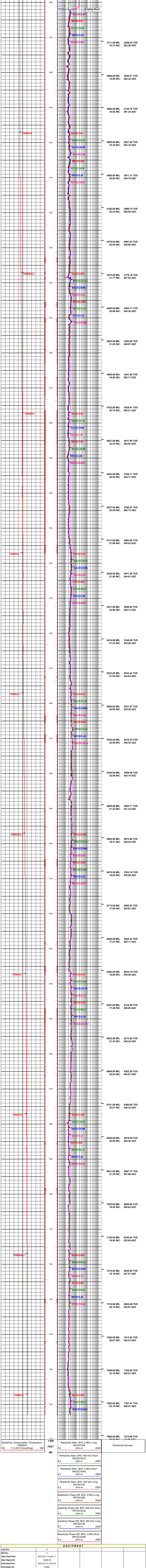
[illegible]

Resistivity Phase Diff. BHC 2 MHz Short					

RPCECSHM
ohm-m

Resistivity Phase Diff. BHC 400 kHz Long RPCECLM	0.2	2000
Resistivity Phase Diff. BHC 400 kHz Short RPCECSLM	0.2	2000
Resistivity Phase Diff. BHC 2 MHz Long RPCECHM	0.2	2000
Resistivity Atten. BHC 400 kHz Long		

	Resistivity Atten. BHC 2 MHz Short RACECSHM ohm-m 0.2-----2000
	Resistivity Atten. BHC 400 kHz Short RACECSLM ohm-m 0.2-----2000

Resistivity Compensation
TRMRAC

Pulser					
Battery 1					
Battery 2					
Turbine Alternator					
Directional Sensor					
Gamma Sensor					
WPR Sensor	139				
Vibration Sensor					
Sensor Offsets To Bit					
Directional (ft)					

Gamma Ray (ft)
WPR (ft)
PWD (ft)

Vibration (ft)					
----------------	--	--	--	--	--