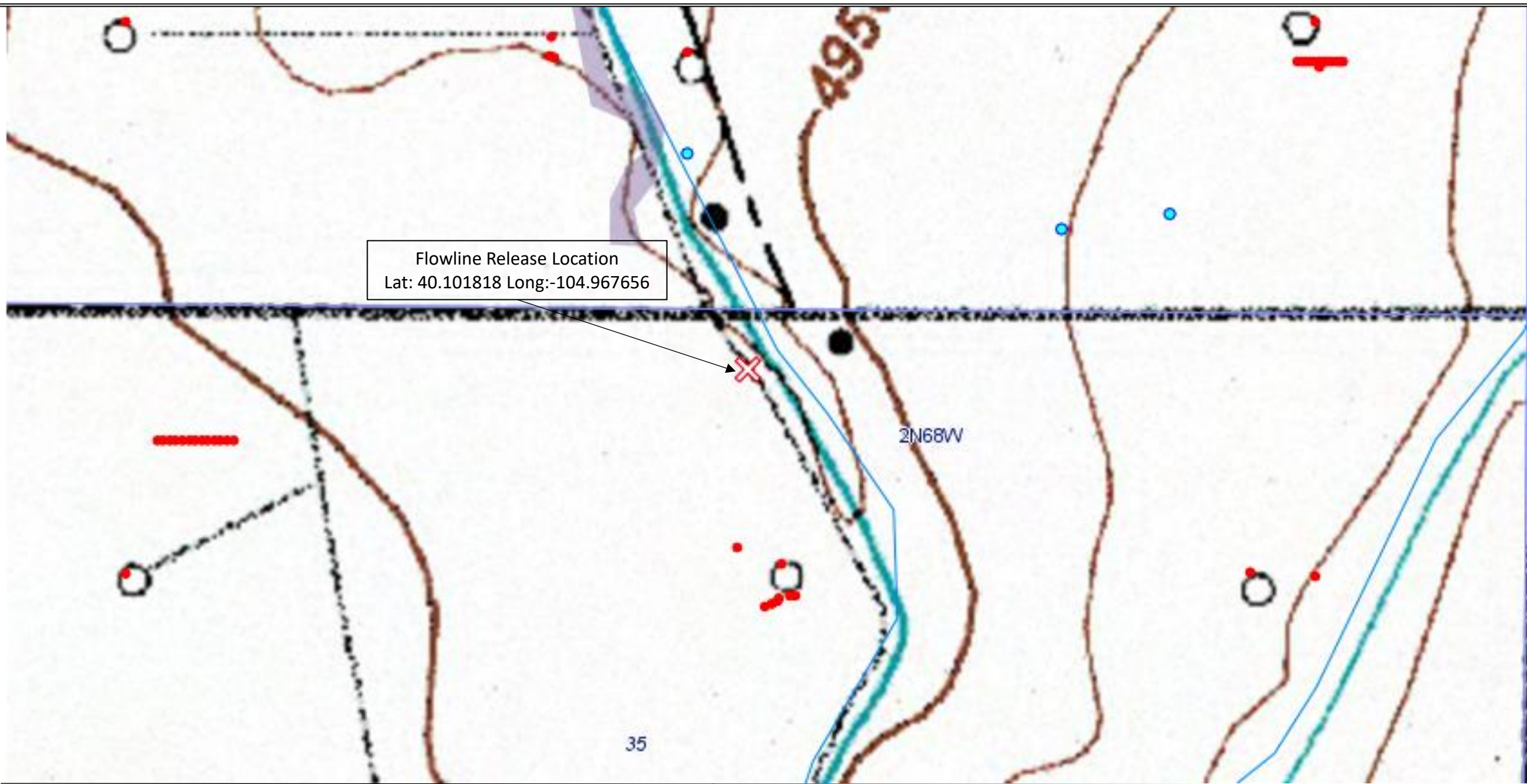




Date:	August 2024	 K.P. Kauffman Company, Inc. 1700 Lincoln St., Suite 4550 Denver CO, 80202	K.P. Kauffman Company, Inc. Lanson Farms 15 Flowline NWNE, Section 35, Township 2 North, Range 68 West Weld County, Colorado	Figure #1 Site Map
Designed By:	K.P. Kauffman Co.			
Drawn By:	JR			



Date:	August 2024
Designed By:	K.P. Kauffman Co.
Drawn By:	JR



K.P. Kauffman Company, Inc.
1700 Lincoln St., Suite 4550
Denver CO, 80202

K.P. Kauffman Company, Inc.
Lanson Farms 15 Flowline
NWNE, Section 35, Township 2 North, Range 68 West
Weld County, Colorado

Figure #1
Topo Map