

Inspection/Audit Photos

Location: TEP ROCKY MOUNTAIN LLC CHEVRON/TR 24-21-597 PAD

Location ID: 324381

Date: 02/24/2025



Photo # 5622 Entrance to location



Photo # 5666 Location

Inspection/Audit Photos

Location: TEP ROCKY MOUNTAIN LLC CHEVRON/TR 24-21-597 PAD

Location ID: 324381

Date: 02/24/2025



Feb 24, 2025 at 11:33:33 AM
+39.593654,-108.285679 ±5.64m

Photo # 5626 Location



Feb 24, 2025 at 12:24:30 PM
+39.594015,-108.285650 ±3.37m

Photo # 5652 Location

Inspection/Audit Photos

Location: TEP ROCKY MOUNTAIN LLC CHEVRON/TR 24-21-597 PAD

Location ID: 324381

Date: 02/24/2025



Feb 24, 2025 at 12:47:28 PM
+39.594045,-108.285425 ±3.79m

Photo # 5665 Location



Feb 24, 2025 at 1:24:11 PM
+39.594048,-108.285161 ±3.44m

Photo # 5700 Location

Inspection/Audit Photos

Location: TEP ROCKY MOUNTAIN LLC CHEVRON/TR 24-21-597 PAD

Location ID: 324381

Date: 02/24/2025



Photo # 5726 SE corner of location



Photo # 5727 SW corner of location

Inspection/Audit Photos

Location: TEP ROCKY MOUNTAIN LLC CHEVRON/TR 24-21-597 PAD

Location ID: 324381

Date: 02/24/2025



Photo # 5728 NW corner of location



Photo # 5729 NE corner of location

Inspection/Audit Photos

Location: TEP ROCKY MOUNTAIN LLC CHEVRON/TR 24-21-597 PAD

Location ID: 324381

Date: 02/24/2025



Photo # 5629 Failure to maintain chemical BMP's/chemical containments full of fluid & not sufficient to contain possible spill



Photo # 5636 Failure to maintain chemical BMP's/chemical containments full of fluid & not sufficient to contain possible spill

Inspection/Audit Photos

Location: TEP ROCKY MOUNTAIN LLC CHEVRON/TR 24-21-597 PAD

Location ID: 324381

Date: 02/24/2025

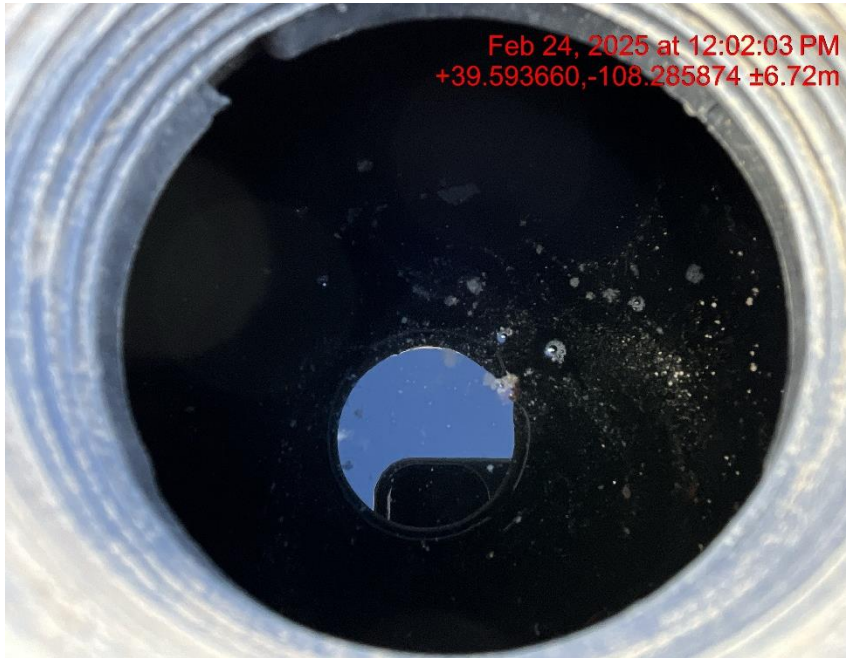


Photo # 5637 Failure to maintain chemical BMP's/chemical containments full of fluid & not sufficient to contain possible spill



Photo # 5642 Failure to maintain chemical BMP's/chemical containments full of fluid & not sufficient to contain possible spill

Inspection/Audit Photos

Location: TEP ROCKY MOUNTAIN LLC CHEVRON/TR 24-21-597 PAD

Location ID: 324381

Date: 02/24/2025



Photo # 5644 Failure to maintain chemical BMP's/chemical containments full of fluid & not sufficient to contain possible spill



Photo # 5646 Open ended piping/wildlife hazard/available for entry by wildlife



Inspection/Audit Photos

Location: TEP ROCKY MOUNTAIN LLC CHEVRON/TR 24-21-597 PAD

Location ID: 324381

Date: 02/24/2025



Photo # 5660 Hole in separator building/wildlife hazard/available for entry by wildlife



Photo # 5685 Improperly stored chemicals

Inspection/Audit Photos

Location: TEP ROCKY MOUNTAIN LLC CHEVRON/TR 24-21-597 PAD

Location ID: 324381

Date: 02/24/2025

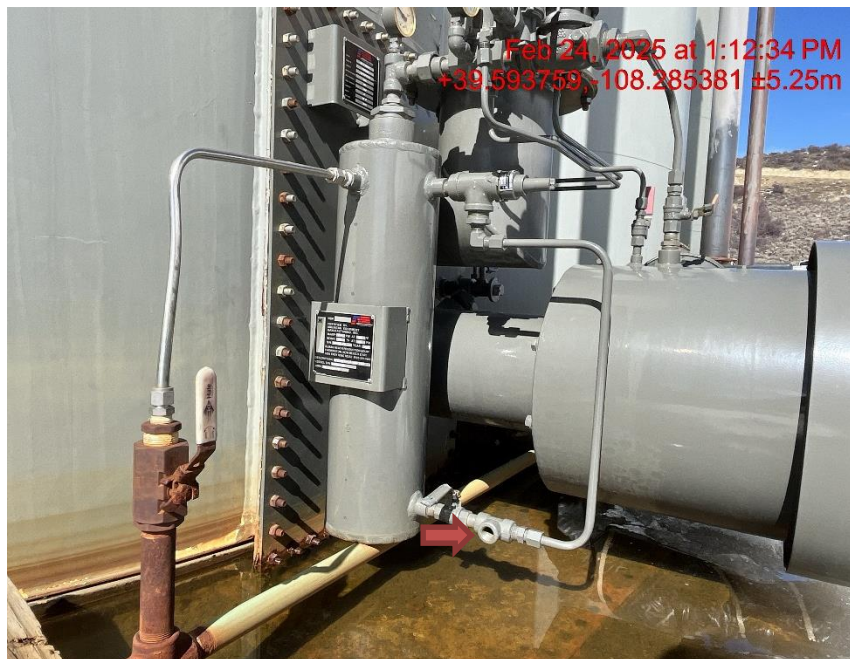


Photo # 5687 PRV vent lines on tank heaters do not comply with CECMC pressure safety device rules



Photo # 5689 PRV vent lines on tank heaters do not comply with CECMC pressure safety device rules

Inspection/Audit Photos

Location: TEP ROCKY MOUNTAIN LLC CHEVRON/TR 24-21-597 PAD

Location ID: 324381

Date: 02/24/2025



Photo # 5696 PRV vent lines on tank heaters do not comply with CECMC pressure safety device rules



Photo # 5699 Open ended load line

Inspection/Audit Photos

Location: TEP ROCKY MOUNTAIN LLC CHEVRON/TR 24-21-597 PAD

Location ID: 324381

Date: 02/24/2025



Photo # 5701 Loose barbed wire on location/wildlife hazard



Photo # 5702 Loose barbed wire on location/wildlife hazard

Inspection/Audit Photos

Location: TEP ROCKY MOUNTAIN LLC CHEVRON/TR 24-21-597 PAD

Location ID: 324381

Date: 02/24/2025



Photo # 5705 Loose barbed wire on location/wildlife hazard



Photo # 5707 Loose barbed wire on location/wildlife hazard

Inspection/Audit Photos

Location: TEP ROCKY MOUNTAIN LLC CHEVRON/TR 24-21-597 PAD

Location ID: 324381

Date: 02/24/2025



Photo # 5708 Loose barbed wire on location/wildlife hazard



Photo # 5709 Loose barbed wire on location/wildlife hazard

Inspection/Audit Photos

Location: TEP ROCKY MOUNTAIN LLC CHEVRON/TR 24-21-597 PAD

Location ID: 324381

Date: 02/24/2025



Photo # 5714 Loose barbed wire on location/wildlife hazard



Photo # 5715 Loose barbed wire on location/wildlife hazard

Inspection/Audit Photos

Location: TEP ROCKY MOUNTAIN LLC CHEVRON/TR 24-21-597 PAD

Location ID: 324381

Date: 02/24/2025



Photo # 5717 Loose barbed wire on location/wildlife hazard



Photo # 5720 Loose barbed wire on location/wildlife hazard

Inspection/Audit Photos

Location: TEP ROCKY MOUNTAIN LLC CHEVRON/TR 24-21-597 PAD

Location ID: 324381

Date: 02/24/2025



Photo # 5649 Debris



Photo # 5651 Debris

Inspection/Audit Photos

Location: TEP ROCKY MOUNTAIN LLC CHEVRON/TR 24-21-597 PAD

Location ID: 324381

Date: 02/24/2025



Photo # 5662 Debris



Photo # 5663 Debris