

Cottonwood Creek 4-65 27 1H

SWNW Sec. 27-T4S-R65W

API #: 005-07215

Facility ID: 435169

Remediation Project #: 36712

Form 19 Data Package

December 2024

Prepared by Tasman, Inc.



On behalf of Crestone Peak Resources Operating, LLC



PHOTO LOG



Photographic Log

<p>☉ 204°SW (T) ● 39°40'37"N, 104°39'30"W ±13ft ▲ 5712ft</p>			<p>☉ 324°NW (T) ● 39°40'37"N, 104°39'30"W ±16ft ▲ 5710ft</p>		
Equipment ID:		Equipment Type:	Equipment ID:		Equipment Type:
Material:	Volume:	Contents:	Material:	Volume:	Contents:
Notes/Conditions:			Notes/Conditions:		



Photographic Log

<p>37°NE (T) ● 39°40'37"N, 104°39'30"W ±13ft ▲ 5710ft</p> <p>20 Dec 2024, 09:42:27</p>			<p>260°W (T) ● 39°40'38"N, 104°39'30"W ±16ft ▲ 5707ft</p> <p>20 Dec 2024, 10:20:56</p>		
Equipment ID:			Equipment ID:		
Equipment Type:			Equipment Type:		
Material:	Volume:	Contents:	Material:	Volume:	Contents:
Notes/Conditions:			Notes/Conditions:		



Photographic Log

165°S (T) ● 39°40'39"N, 104°39'29"W ±16ft ▲ 5706ft			307°NW (T) ● 39°40'39"N, 104°39'29"W ±16ft ▲ 5707ft		
Equipment ID:		Equipment Type:	Equipment ID:		Equipment Type:
Material:	Volume:	Contents:	Material:	Volume:	Contents:
Notes/Conditions:			Notes/Conditions:		



Photographic Log

<p>☉ 253°W (T) ☉ 39°40'38"N, 104°39'29"W ±16ft ▲ 5704ft</p>			<p>☉ 266°W (T) ☉ 39°40'38"N, 104°39'29"W ±16ft ▲ 5706ft</p>				
Equipment ID:		Equipment Type:		Equipment ID:		Equipment Type:	
Material:	Volume:	Contents:		Material:	Volume:	Contents:	
Notes/Conditions:				Notes/Conditions:			



Photographic Log

<p>NE 60 E 90 S 120 S 150 S 180 SW 210 W 270 NW 300 NW 330 N 30 NE 60 E 90</p> <p>☉ 138°SE (T) ☉ 39°40'37"N, 104°39'30"W ±16ft ▲ 5706ft</p>			<p>☉ 359°N (T) ☉ 39°40'39"N, 104°39'29"W ±16ft ▲ 5706ft</p>				
<p>20 Dec 2024, 12:22:51</p>			<p>20 Dec 2024, 13:07:07</p>				
Equipment ID:		Equipment Type:		Equipment ID:		Equipment Type:	
Material:	Volume:	Contents:		Material:	Volume:	Contents:	
Notes/Conditions:				Notes/Conditions:			



Photographic Log

<p>☉ 97°E (T) ● 39°40'39"N, 104°39'29"W ±19ft ▲ 5712ft</p>			<p>☉ 296°NW (T) ● 39°40'39"N, 104°39'31"W ±16ft ▲ 5706ft</p>				
Equipment ID:		Equipment Type:		Equipment ID:		Equipment Type:	
Material:	Volume:	Contents:		Material:	Volume:	Contents:	
Notes/Conditions:				Notes/Conditions:			



Photographic Log

69°E (T) ● 39°40'39"N, 104°39'30"W ±16ft ▲ 5705ft			109°E (T) ● 39°40'39"N, 104°39'30"W ±16ft ▲ 5704ft				
20 Dec 2024 11:02:53			20 Dec 2024 11:03:53				
Equipment ID:		Equipment Type:		Equipment ID:		Equipment Type:	
Material:	Volume:	Contents:		Material:	Volume:	Contents:	
Notes/Conditions:				Notes/Conditions:			



Photographic Log

140°SE (T) ● 39°40'39"N, 104°39'30"W ±16ft ▲ 5704ft			323°NW (T) ● 39°40'35"N, 104°39'30"W ±16ft ▲ 5706ft				
<p style="text-align: center;">AST4-B01@3</p> <p style="text-align: right;">20 Dec 2024 11:00:33</p>			<p style="text-align: center;">X BG06@6"/1'16"</p> <p style="text-align: right;">17 Feb 2025 13:47:32</p>				
Equipment ID:		Equipment Type:		Equipment ID:		Equipment Type:	
Material:	Volume:	Contents:		Material:	Volume:	Contents:	
Notes/Conditions:				Notes/Conditions: Background Soil Sample Location			



Photographic Log

<p>☉ 289°W (T) ● 39°40'36"N, 104°39'29"W ±16ft ▲ 5708ft</p>			<p>☉ 269°W (T) ● 39°40'36"N, 104°39'29"W ±16ft ▲ 5707ft</p>		
<p style="text-align: center;">X BG07@6"/1'6'</p> <p style="text-align: right; font-size: small;">17 Feb 2025, 13:49:32</p>			<p style="text-align: center;">X BG08@6"/1'6'</p> <p style="text-align: right; font-size: small;">17 Feb 2025, 13:51:06</p>		
Equipment ID:		Equipment Type:	Equipment ID:		Equipment Type:
Material:	Volume:	Contents:	Material:	Volume:	Contents:
Notes/Conditions: Background Soil Sample Location			Notes/Conditions: Background Soil Sample Location		



Photographic Log

<p>6°N (T) ● 39°40'36"N, 104°39'28"W ±16ft ▲ 5708ft</p>			<p>5°N (T) ● 39°40'36"N, 104°39'28"W ±16ft ▲ 5708ft</p>				
<p>BG09@6"/1'6'</p> <p>17 Feb 2025, 13:53:03</p>			<p>BG10@6"/1'6'</p> <p>17 Feb 2025, 13:54:25</p>				
Equipment ID:		Equipment Type:		Equipment ID:		Equipment Type:	
Material:		Volume:		Material:		Volume:	
Contents:				Contents:			
Notes/Conditions: Background Soil Sample Location				Notes/Conditions: Background Soil Sample Location			

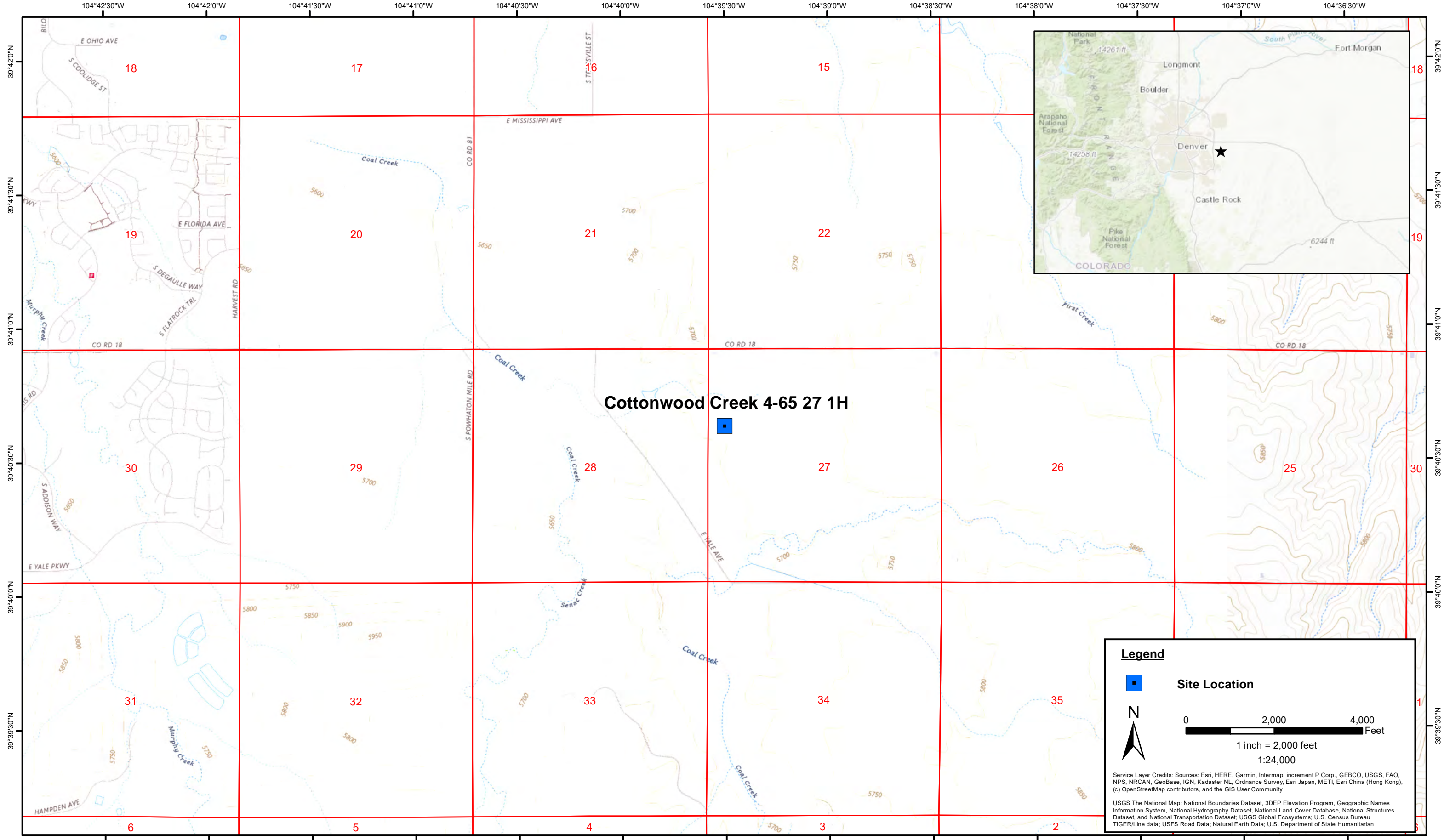


Photographic Log



Equipment ID:		Equipment Type:		Equipment ID:		Equipment Type:	
Material:		Volume:		Material:		Volume:	
Contents:				Contents:			
Notes/Conditions: Background Soil Sample Lithology				Notes/Conditions:			

FIGURES



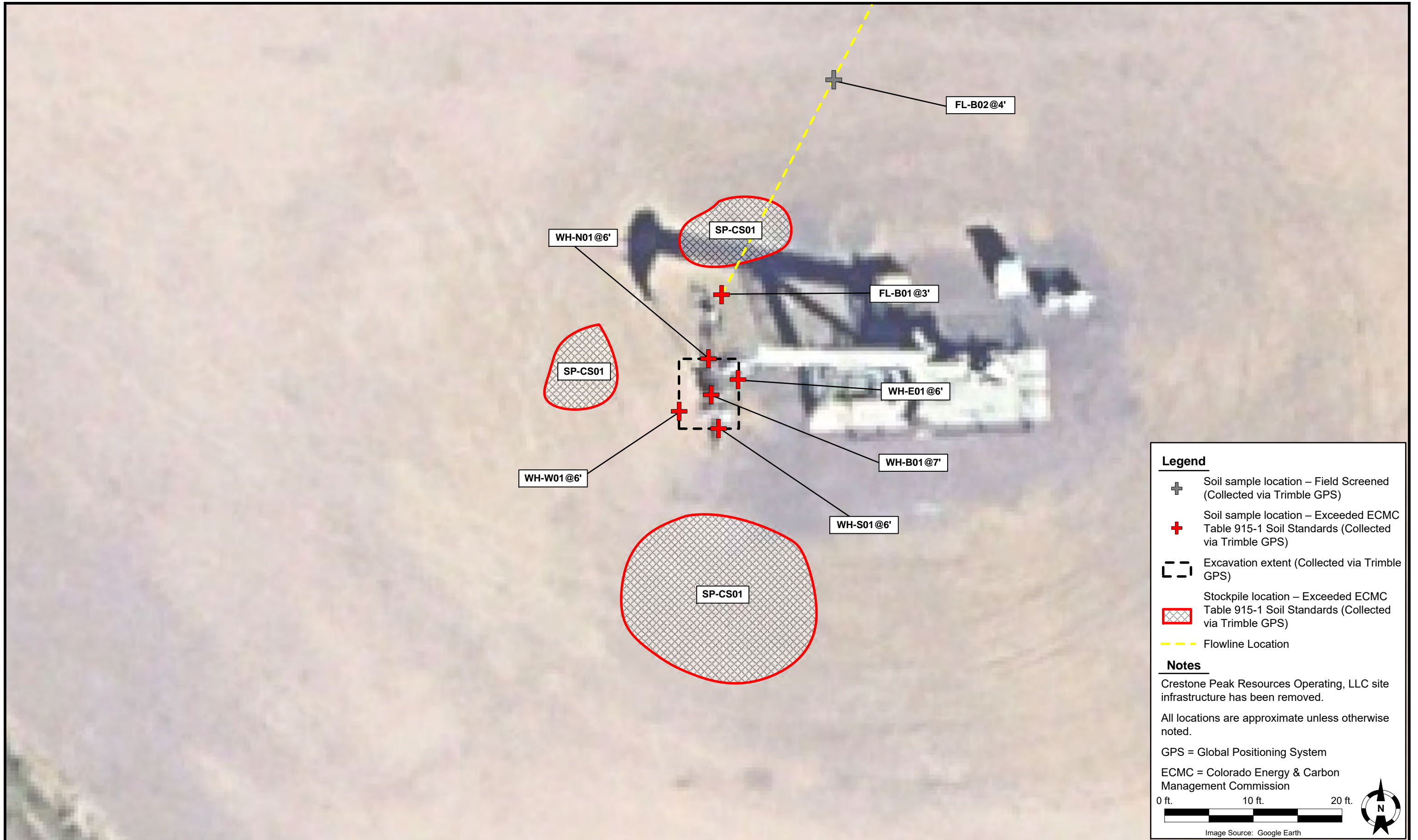
DATE:	February 2025
DESIGNED BY:	S. Vogt
DRAWN BY:	J. Woffinden



Crestone Peak Resources Operating, LLC
Cottonwood Creek 4-65 27 1H
 SWNW Sec. 27-T4S-R65W
 Arapahoe County, Colorado

Site Location Map

Figure
1



Legend

- Soil sample location – Field Screened (Collected via Trimble GPS)
- Soil sample location – Exceeded ECMC Table 915-1 Soil Standards (Collected via Trimble GPS)
- Excavation extent (Collected via Trimble GPS)
- Stockpile location – Exceeded ECMC Table 915-1 Soil Standards (Collected via Trimble GPS)
- Flowline Location

Notes

Crestone Peak Resources Operating, LLC site infrastructure has been removed.

All locations are approximate unless otherwise noted.

GPS = Global Positioning System

ECMC = Colorado Energy & Carbon Management Commission

0 ft. 10 ft. 20 ft.

Image Source: Google Earth

DATE:	February 20, 2025
DESIGNED BY:	S. Vogt
DRAWN BY:	B. LeVasseur

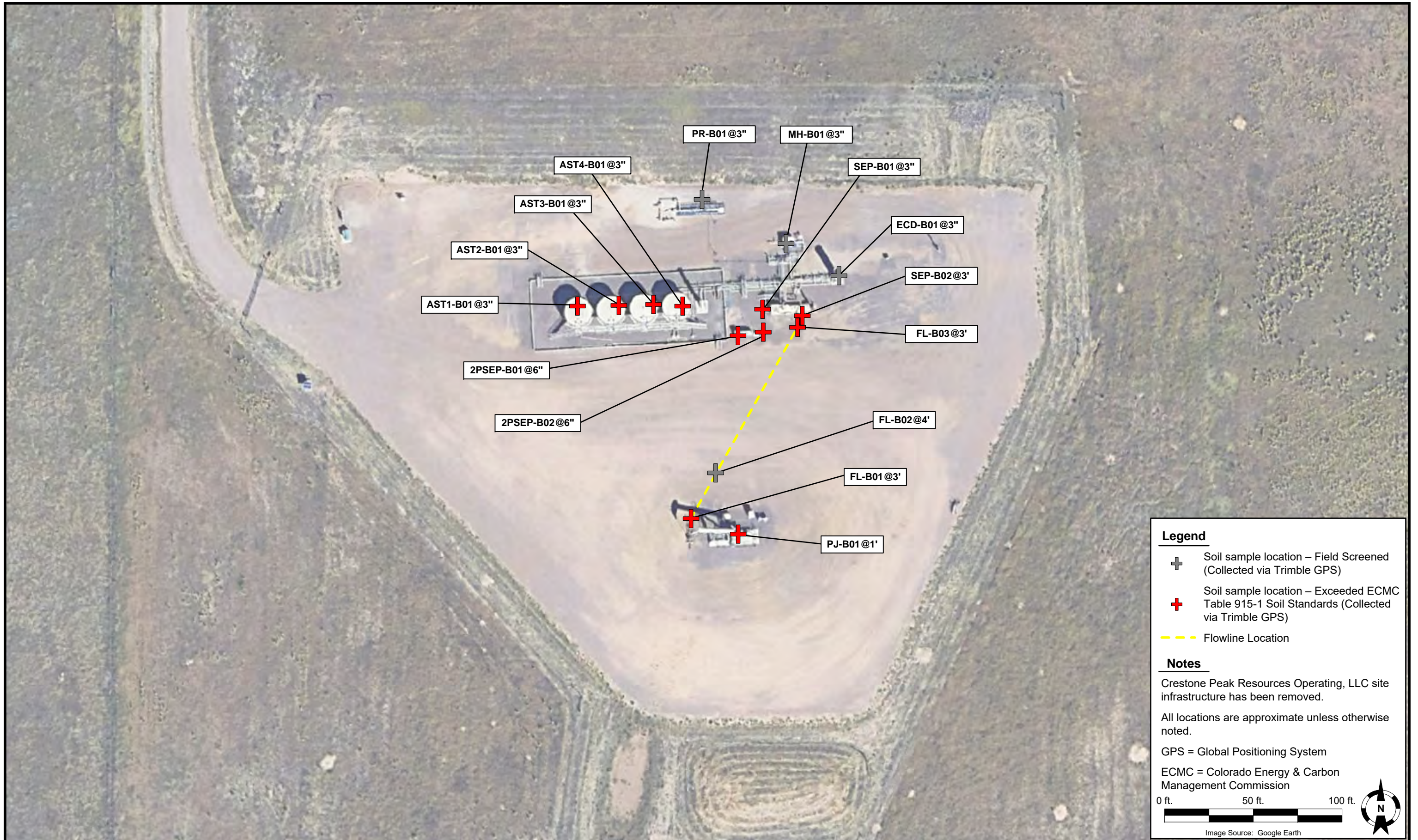


Tasman, Inc.
 6855 W119th Ave.
 Broomfield, CO 80020

Crestone Peak Resources Operating, LLC
 Cottonwood Creek 4-65 27 1H
 SWNW Sec. 27-T4S-R65W
 Arapahoe County, Colorado

Wellhead Soil Sample
 Location Map
 (12/20/2024)

Figure
 2



Legend

- Soil sample location – Field Screened (Collected via Trimble GPS)
- Soil sample location – Exceeded ECMC Table 915-1 Soil Standards (Collected via Trimble GPS)
- Flowline Location

Notes

Crestone Peak Resources Operating, LLC site infrastructure has been removed.

All locations are approximate unless otherwise noted.

GPS = Global Positioning System

ECMC = Colorado Energy & Carbon Management Commission

0 ft. 50 ft. 100 ft.

Image Source: Google Earth

DATE:	February 20, 2025
DESIGNED BY:	S. Vogt
DRAWN BY:	B. LeVasseur

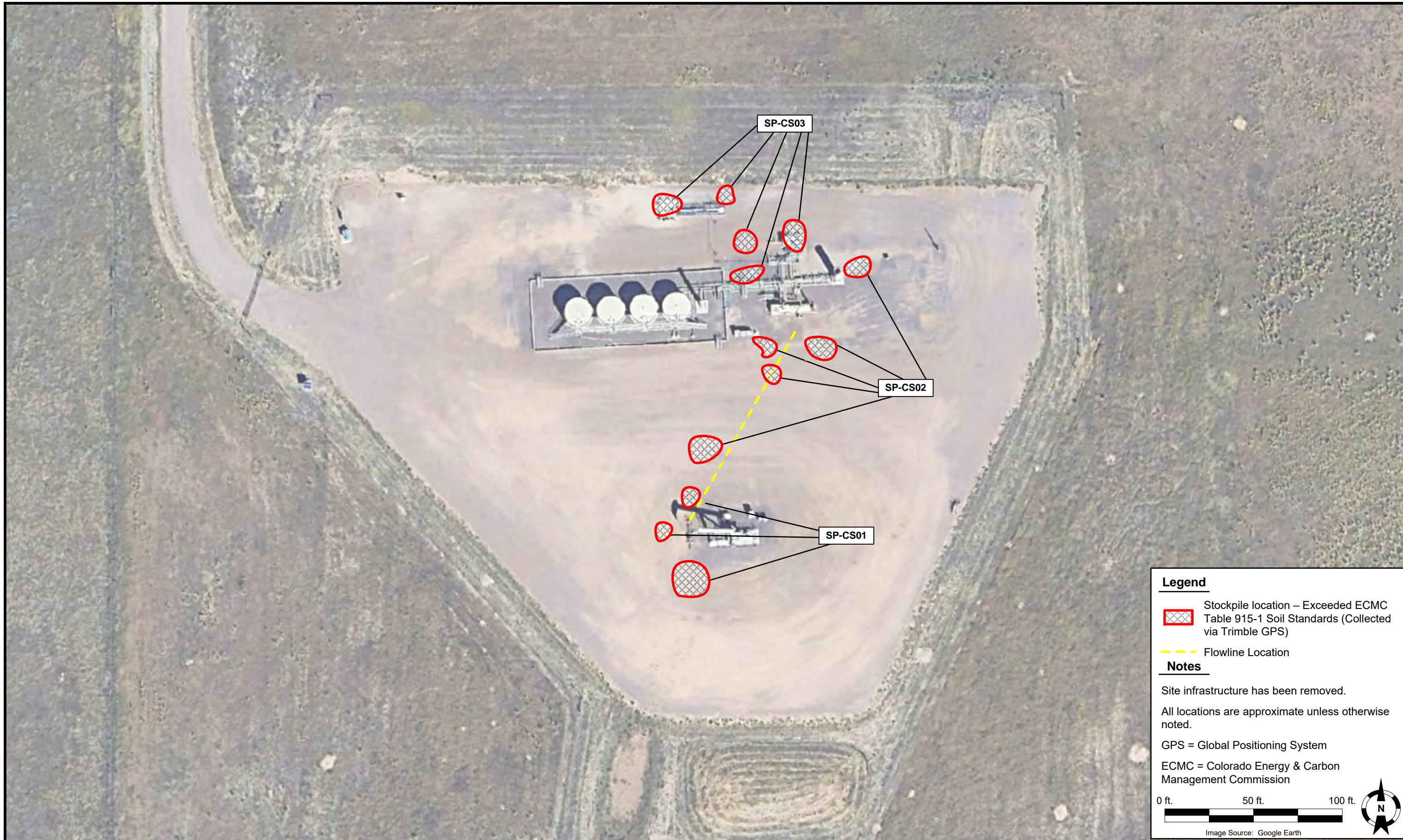


Tasman, Inc.
 6855 W119th Ave.
 Broomfield, CO 80020


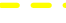
Crestone Peak Resources Operating, LLC
 Cottonwood Creek 4-65 27 1H
 SWNW Sec. 27-T4S-R65W
 Arapahoe County, Colorado

Facility and Flowline
 Soil Sample
 Location Map
 (12/20/2024)

Figure
 3



Legend

-  Stockpile location – Exceeded ECMC Table 915-1 Soil Standards (Collected via Trimble GPS)
-  Flowline Location

Notes

Site infrastructure has been removed.

All locations are approximate unless otherwise noted.

GPS = Global Positioning System

ECMC = Colorado Energy & Carbon Management Commission

0 ft. 50 ft. 100 ft.




Image Source: Google Earth

DATE:	February 20, 2025
DESIGNED BY:	S. Vogt
DRAWN BY:	B. LeVasseur



Tasman, Inc.
 6855 W119th Ave.
 Broomfield, CO 80020

Crestone Peak Resources Operating, LLC
 Cottonwood Creek 4-65 27 1H
 SWNW Sec. 27-T4S-R65W
 Arapahoe County, Colorado

Stockpile Soil Sample
 Location Map
 (12/20/2024)

Figure
 4



Legend

- Background sample location – Analytical Results Pending (Collected via Trimble GPS)
- Excavation extent (Collected via Trimble GPS)

Notes

Site infrastructure has been removed.

All locations are approximate unless otherwise noted.

GPS = Global Positioning System

0 ft. 50 ft. 100 ft.

Image Source: Google Earth

DATE:	February 20, 2025
DESIGNED BY:	S. Vogt
DRAWN BY:	B. LeVasseur



Tasman, Inc.
 6855 W119th Ave.
 Broomfield, CO 80020

Crestone Peak Resources Operating, LLC
 Cottonwood Creek 4-65 27 1H
 SWNW Sec. 27-T4S-R65W
 Arapahoe County, Colorado

Background Soil Sample
 Location Map
 (02/13/2025 – 02/17/2025)

Figure
 5

TABLES

TABLE 1
COTTONWOOD CREEK 4-65 27 1H
SOIL SAMPLE LOCATIONS
CRESTONE PEAK RESOURCES OPERATING, LLC



Soil Sample Location	Depth	Date	PID Reading (ppm)	Latitude	Longitude	GPS PDOP Value	Lab (Y/N)
WH-B01@7'	7'	12/20/2024	35.8	39.677164	-104.658423	-	Y
WH-N01@6'	6'	12/20/2024	9.6	39.677174	-104.658425	-	Y
WH-S01@6'	6'	12/20/2024	32.5	39.677154	-104.658420	-	Y
WH-E01@6'	6'	12/20/2024	81.2	39.677170	-104.658414	-	Y
WH-W01@6'	6'	12/20/2024	6.6	39.677158	-104.658435	-	Y
FL-B01@3'	3'	12/20/2024	1.3	39.677196	-104.658419	1	Y
SP-CS01	-	12/20/2024	2.8	39.677114	-104.658467	0.8	Y
FL-B02@4'	4'	12/20/2024	2.2	39.677264	-104.658372	0.8	N
FL-B03@3'	3'	12/20/2024	1.2	39.677490	-104.658202	1	Y
SEP-B01@3"	3"	12/20/2024	1.0	39.677515	-104.658274	0.7	Y
SEP-B02@3'	3'	12/20/2024	1.5	39.677506	-104.658193	0.8	Y
SP-CS02	-	12/20/2024	1.0	39.677571	-104.658098	0.8	Y
2PSEP-B01@3"	3"	12/20/2024	1.8	39.677477	-104.658324	0.7	Y
2PSEP-B02@6"	6"	12/20/2024	0.4	39.677481	-104.658274	0.7	Y
AST1-B01@3"	3"	12/20/2024	1.6	39.677524	-104.658645	0.9	Y
AST2-B01@3"	3"	12/20/2024	2.5	39.677523	-104.658563	0.8	Y
AST3-B01@3"	3"	12/20/2024	1.1	39.677524	-104.658493	0.9	Y
AST4B01@3"	3"	12/20/2024	0.4	39.677521	-104.658432	1.1	Y
PJ-B01@1'	1'	12/20/2024	1.1	39.677169	-104.658324	0.8	Y
PR-B01@3"	3"	12/20/2024	1.0	39.677688	-104.658395	0.9	N
SP-CS03	-	12/20/2024	0.5	39.677606	-104.658209	0.8	Y
MH-B01@3"	3"	12/20/2024	1.9	39.677618	-104.658227	0.8	N
ECD-B01@3"	3"	12/20/2024	4.1	39.677567	-104.658112	0.8	N
BACKGROUND							
BG01@3"	3"	02/13/2025	1.9	39.677449	-104.659488	0.8	Y
BG01@3'	3'	02/13/2025	4.0	39.677449	-104.659488	0.8	Y
BG01@7'	7'	02/13/2025	1.0	39.677449	-104.659488	0.8	Y
BG02@3"	3"	02/13/2025	2.8	39.677282	-104.659484	0.9	Y
BG02@3'	3'	02/13/2025	4.6	39.677282	-104.659484	0.9	Y
BG02@7'	7'	02/13/2025	1.9	39.677282	-104.659484	0.9	Y
BG03@3"	3"	02/13/2025	2.7	39.677082	-104.659342	0.9	Y
BG03@3'	3'	02/13/2025	1.8	39.677082	-104.659342	0.9	Y
BG03@7'	7'	02/13/2025	2.8	39.677082	-104.659342	0.9	Y
BG04@3"	3"	02/13/2025	2.1	39.676920	-104.659299	0.9	Y

TABLE 1
COTTONWOOD CREEK 4-65 27 1H
SOIL SAMPLE LOCATIONS
CRESTONE PEAK RESOURCES OPERATING, LLC



Soil Sample Location	Depth	Date	PID Reading (ppm)	Latitude	Longitude	GPS PDOP Value	Lab (Y/N)
BG04@3'	3'	02/13/2025	1.2	39.676920	-104.659299	0.9	Y
BG04@7'	7'	02/13/2025	1.5	39.676920	-104.659299	0.9	Y
BG05@3"	3"	02/13/2025	4.2	39.676724	-104.659279	0.9	Y
BG05@3'	3'	02/13/2025	4.5	39.676724	-104.659279	0.9	Y
BG05@7'	7'	02/13/2025	1.8	39.676724	-104.659279	0.9	Y
BG06@6"	6"	02/17/2025	0.6	39.676662	-104.658439	0.8	Y
BG06@1'	1'	02/17/2025	0.5	39.676662	-104.658439	0.8	Y
BG06@6'	6'	02/17/2025	0.8	39.676662	-104.658439	0.8	Y
BG07@6"	6"	02/17/2025	0.7	39.676675	-104.658282	0.8	Y
BG07@1'	1'	02/17/2025	0.4	39.676675	-104.658282	0.8	Y
BG07@6'	6'	02/17/2025	0.2	39.676675	-104.658282	0.8	Y
BG08@6"	6"	02/17/2025	0.3	39.676693	-104.658103	0.8	Y
BG08@1'	1'	02/17/2025	0.6	39.676693	-104.658103	0.8	Y
BG08@6'	6'	02/17/2025	0.6	39.676693	-104.658103	0.8	Y
BG09@6"	6"	02/17/2025	0.6	39.676833	-104.658000	0.8	Y
BG09@1'	1'	02/17/2025	0.7	39.676833	-104.658000	0.8	Y
BG09@6'	6'	02/17/2025	0.8	39.676833	-104.658000	0.8	Y
BG10@6"	6"	02/17/2025	0.5	39.676943	-104.657934	0.8	Y
BG10@1'	1'	02/17/2025	0.8	39.676943	-104.657934	0.8	Y
BG10@6'	6'	02/17/2025	0.4	39.676943	-104.657934	0.8	Y

Notes:

PID = Photoionization Detector

ppm = parts per million

GPS = Global Positioning System

PDOP = Position Dilution of Precision

- = Not Applicable

TABLE 2
COTTONWOOD CREEK 4-65 27 1H
SOIL ANALYTICAL DATA - VOCs
CRESTONE PEAK RESOURCES OPERATING, LLC



Soil Sample Location	Depth	Date	Benzene (mg/kg)	Toluene (mg/kg)	Ethylbenzene (mg/kg)	Total Xylenes (mg/kg)	Naphthalene (mg/kg)	TVPH-GRO (mg/kg)	TEPH-DRO (mg/kg)	TEPH-ORO (mg/kg)	1,2,4-TMB (mg/kg)	1,3,5-TMB (mg/kg)
ECMC Organic Compounds in Soils - GSSL ⁽¹⁾			0.0026	0.69	0.78	9.9	0.0038	500			0.0081	0.0087
ECMC Organic Compounds in Soils - RSL ⁽²⁾			1.2	490	5.8	58	2	500			30	27
WH-B01@7'	7'	12/20/2024	<0.0020	<0.0050	<0.0050	<0.010	<0.0038	<0.50	1,100	60	<0.0050	<0.0050
WH-N01@6'	6'	12/20/2024	<0.0020	<0.0050	<0.0050	<0.010	<0.0038	0.71	730	<50	<0.0050	<0.0050
WH-S01@6'	6'	12/20/2024	<0.0020	<0.0050	<0.0050	<0.010	<0.0038	0.97	1,700	<50	<0.0050	<0.0050
WH-E01@6'	6'	12/20/2024	0.0030	0.011	0.030	0.16	0.11	8.6	2,900	<50	0.30	0.079
WH-W01@6'	6'	12/20/2024	<0.0020	<0.0050	<0.0050	<0.010	<0.0038	<0.50	230	<50	<0.0050	<0.0050
FL-B01@3'	3'	12/20/2024	<0.0020	<0.0050	<0.0050	<0.010	<0.0038	<0.50	<50	<50	<0.0050	<0.0050
SP-CS01	-	12/20/2024	<0.0020	<0.0050	<0.0050	<0.010	<0.0038	<0.50	230	<50	<0.0050	<0.0050
FL-B03@3'	3'	12/20/2024	<0.0020	<0.0050	<0.0050	<0.010	<0.0038	<0.50	<50	<50	<0.0050	<0.0050
SEP-B01@3"	3"	12/20/2024	<0.0020	<0.0050	<0.0050	<0.010	<0.0038	<0.50	<50	<50	<0.0050	<0.0050
SEP-B02@3'	3'	12/20/2024	<0.0020	<0.0050	<0.0050	<0.010	<0.0038	<0.50	<50	<50	<0.0050	<0.0050
SP-CS02	-	12/20/2024	<0.0020	<0.0050	<0.0050	<0.010	<0.0038	<0.50	<50	<50	<0.0050	<0.0050
2PSEP-B01@3"	3"	12/20/2024	<0.0020	<0.0050	<0.0050	<0.010	<0.0038	<0.50	<50	<50	<0.0050	<0.0050
2PSEP-B02@6"	6"	12/20/2024	<0.0020	<0.0050	<0.0050	<0.010	<0.0038	<0.50	<50	<50	<0.0050	<0.0050
AST1-B01@3"	3"	12/20/2024	<0.0020	<0.0050	<0.0050	<0.010	<0.0038	<0.50	<50	<50	<0.0050	<0.0050
AST2-B01@3"	3"	12/20/2024	<0.0020	<0.0050	<0.0050	<0.010	<0.0038	<0.50	<50	<50	<0.0050	<0.0050
AST3-B01@3"	3"	12/20/2024	<0.0020	<0.0050	<0.0050	<0.010	<0.0038	<0.50	<50	<50	<0.0050	<0.0050
AST4B01@3"	3"	12/20/2024	<0.0020	<0.0050	<0.0050	<0.010	<0.0038	<0.50	<50	<50	<0.0050	<0.0050
PJ-B01@1'	1'	12/20/2024	<0.0020	<0.0050	<0.0050	<0.010	<0.0038	<0.50	<50	<50	<0.0050	<0.0050
SP-CS03	-	12/20/2024	<0.0020	<0.0050	<0.0050	<0.010	<0.0038	<0.50	<50	<50	<0.0050	<0.0050

Notes:

VOCs = Volatile Organic Compounds

(1) Standards for soil are taken from ECMC Table 915-1: Organic Compounds in Soils - Protection of Groundwater Soil Screening Level Concentrations (Effective January 15, 2021)

(2) Standards for soil are taken from ECMC Table 915-1: Organic Compounds in Soils - Residential Soil Screening Level Concentrations (Effective January 15, 2021)

ECMC = Colorado Energy & Carbon Management Commission

GSSL = Protection of Groundwater Screening Level

TABLE 2
COTTONWOOD CREEK 4-65 27 1H
SOIL ANALYTICAL DATA - VOCs
CRESTONE PEAK RESOURCES OPERATING, LLC



Soil Sample Location	Depth	Date	Benzene (mg/kg)	Toluene (mg/kg)	Ethylbenzene (mg/kg)	Total Xylenes (mg/kg)	Naphthalene (mg/kg)	TVPH-GRO (mg/kg)	TEPH-DRO (mg/kg)	TEPH-ORO (mg/kg)	1,2,4-TMB (mg/kg)	1,3,5-TMB (mg/kg)
ECMC Organic Compounds in Soils - GSSL ⁽¹⁾			0.0026	0.69	0.78	9.9	0.0038	500			0.0081	0.0087
ECMC Organic Compounds in Soils - RSL ⁽²⁾			1.2	490	5.8	58	2	500			30	27

RSL = Residential Soil Screening Level

(<) = Analytical result is less than the indicated laboratory reporting limit

mg/kg = milligrams per kilogram

TVPH - GRO = Total Volatile Petroleum Hydrocarbons - Gasoline Range Organics

TEPH - DRO = Total Extractable Petroleum Hydrocarbons - Diesel Range Organics

TEPH - ORO = Total Extractable Petroleum Hydrocarbons - Oil Range Organics

1,2,4 - TMB = 1,2,4 - Trimethylbenzene

1,3,5 - TMB = 1,3,5 - Trimethylbenzene

BOLD = Analytical result is in exceedance of ECMC Table 915-1: Organic Compounds in Soils - Protection of Groundwater Soil Screening Level Concentrations

BOLD = Analytical result is in exceedance of ECMC Table 915-1: Organic Compounds in Soils - Residential Soil Screening Level Concentrations

- = Not applicable or constituent not analyzed



TABLE 3
COTTONWOOD CREEK 4-65 27 1H
SOIL ANALYTICAL DATA - PAHs
CRESTONE PEAK RESOURCES OPERATING, LLC

Soil Sample Location	Depth	Date	Acenaphthene (mg/kg)	Anthracene (mg/kg)	Benzo(a)A (mg/kg)	Benzo(b)F (mg/kg)	Benzo(k)F (mg/kg)	Benzo(a)P (mg/kg)	Chrysene (mg/kg)	D (a,h) A (mg/kg)	Fluoranthene (mg/kg)	Fluorene (mg/kg)	1,2,3-CD (mg/kg)	1-M (mg/kg)	2-M (mg/kg)	Pyrene (mg/kg)
ECMC Organic Compounds in Soils - GSSL ⁽¹⁾			0.55	5.8	0.011	0.3	2.9	0.24	9	0.96	8.9	0.54	0.98	0.006	0.019	1.3
ECMC Organic Compounds in Soils - RSL ⁽²⁾			360	1,800	1.1	1.1	11	0.11	110	0.11	240	240	1.1	18	24	180
WH-B01@7'	7'	12/20/2024	<0.00500	<0.00500	<0.00500	<0.00500	<0.00500	<0.00500	<0.00500	<0.00500	<0.00500	0.0543	<0.00500	0.0661	<0.00500	0.0500
WH-N01@6'	6'	12/20/2024	0.0506	<0.00500	<0.00500	<0.00500	<0.00500	<0.00500	<0.00500	<0.00500	<0.00500	0.0316	<0.00500	<0.00500	<0.00500	0.0480
WH-S01@6'	6'	12/20/2024	<0.00500	<0.00500	<0.00500	<0.00500	<0.00500	<0.00500	0.00984	<0.00500	<0.00500	0.0219	<0.00500	<0.00500	<0.00500	0.0755
WH-E01@6'	6'	12/20/2024	<0.00500	<0.00500	<0.00500	<0.00500	<0.00500	<0.00500	0.00686	<0.00500	<0.00500	0.140	<0.00500	<0.00500	34.8	0.150
WH-W01@6'	6'	12/20/2024	<0.00500	<0.00500	<0.00500	<0.00500	<0.00500	<0.00500	<0.00500	<0.00500	<0.00500	0.00526	<0.00500	<0.00500	<0.00500	0.0108
FL-B01@3'	3'	12/20/2024	<0.00500	<0.00500	<0.00500	<0.00500	<0.00500	<0.00500	<0.00500	<0.00500	<0.00500	<0.00500	<0.00500	<0.00500	<0.00500	<0.00500
SP-CS01	-	12/20/2024	<0.00500	<0.00500	<0.00500	<0.00500	<0.00500	<0.00500	<0.00500	<0.00500	<0.00500	<0.00500	<0.00500	<0.00500	<0.00500	<0.00500
FL-B03@3'	3'	12/20/2024	<0.00500	<0.00500	<0.00500	<0.00500	<0.00500	<0.00500	<0.00500	<0.00500	<0.00500	<0.00500	<0.00500	<0.00500	<0.00500	<0.00500
SEP-B01@3"	3"	12/20/2024	<0.00500	<0.00500	<0.00500	<0.00500	<0.00500	<0.00500	<0.00500	<0.00500	<0.00500	<0.00500	<0.00500	<0.00500	<0.00500	<0.00500
SEP-B02@3'	3'	12/20/2024	<0.00500	<0.00500	<0.00500	<0.00500	<0.00500	<0.00500	<0.00500	<0.00500	<0.00500	<0.00500	<0.00500	<0.00500	<0.00500	<0.00500
SP-CS02	-	12/20/2024	<0.00500	<0.00500	<0.00500	<0.00500	<0.00500	<0.00500	<0.00500	<0.00500	<0.00500	<0.00500	<0.00500	<0.00500	<0.00500	<0.00500
2PSEP-B01@3"	3"	12/20/2024	<0.00500	<0.00500	<0.00500	<0.00500	<0.00500	<0.00500	<0.00500	<0.00500	<0.00500	<0.00500	<0.00500	<0.00500	<0.00500	<0.00500
2PSEP-B02@6"	6"	12/20/2024	<0.00500	<0.00500	<0.00500	<0.00500	<0.00500	<0.00500	<0.00500	<0.00500	<0.00500	<0.00500	<0.00500	<0.00500	<0.00500	<0.00500
AST1-B01@3"	3"	12/20/2024	<0.00500	<0.00500	<0.00500	<0.00500	<0.00500	<0.00500	<0.00500	<0.00500	<0.00500	<0.00500	<0.00500	<0.00500	<0.00500	<0.00500
AST2-B01@3"	3"	12/20/2024	<0.00500	<0.00500	<0.00500	<0.00500	<0.00500	<0.00500	<0.00500	<0.00500	<0.00500	<0.00500	<0.00500	<0.00500	<0.00500	<0.00500
AST3-B01@3"	3"	12/20/2024	<0.00500	<0.00500	<0.00500	<0.00500	<0.00500	<0.00500	<0.00500	<0.00500	<0.00500	<0.00500	<0.00500	<0.00500	<0.00500	<0.00500
AST4B01@3"	3"	12/20/2024	<0.00500	<0.00500	<0.00500	<0.00500	<0.00500	<0.00500	<0.00500	<0.00500	<0.00500	<0.00500	<0.00500	<0.00500	<0.00500	<0.00500
PJ-B01@1'	1'	12/20/2024	<0.00500	<0.00500	<0.00500	<0.00500	<0.00500	<0.00500	<0.00500	<0.00500	<0.00500	<0.00500	<0.00500	<0.00500	<0.00500	<0.00500
SP-CS03	-	12/20/2024	<0.00500	<0.00500	<0.00500	<0.00500	<0.00500	<0.00500	<0.00500	<0.00500	<0.00500	<0.00500	<0.00500	<0.00500	<0.00500	<0.00500

Notes:

PAHs = Polycyclic Aromatic Hydrocarbons

(1) Standards for soil are taken from ECMC Table 915-1: Organic Compounds in Soils - Protection of Groundwater Soil Screening Level Concentrations (Effective January 15, 2021)

(2) Standards for soil are taken from ECMC Table 915-1: Organic Compounds in Soils - Residential Soil Screening Level Concentrations (Effective January 15, 2021)

ECMC = Colorado Energy & Carbon Management Commission

GSSL = Protection of Groundwater Screening Level

RSL = Residential Soil Screening Level

(<) = Analytical result is less than the indicated laboratory reporting limit

TABLE 3
COTTONWOOD CREEK 4-65 27 1H
SOIL ANALYTICAL DATA - PAHs
CRESTONE PEAK RESOURCES OPERATING, LLC



Soil Sample Location	Depth	Date	Acenaphthene (mg/kg)	Anthracene (mg/kg)	Benzo(a)A (mg/kg)	Benzo(b)F (mg/kg)	Benzo(k)F (mg/kg)	Benzo(a)P (mg/kg)	Chrysene (mg/kg)	D (a,h) A (mg/kg)	Fluoranthene (mg/kg)	Fluorene (mg/kg)	1,2,3-CD (mg/kg)	1-M (mg/kg)	2-M (mg/kg)	Pyrene (mg/kg)
ECMC Organic Compounds in Soils - GSSL ⁽¹⁾			0.55	5.8	0.011	0.3	2.9	0.24	9	0.96	8.9	0.54	0.98	0.006	0.019	1.3
ECMC Organic Compounds in Soils - RSL ⁽²⁾			360	1,800	1.1	1.1	11	0.11	110	0.11	240	240	1.1	18	24	180

mg/kg = milligrams per kilogram

Benzo(a)A = Benzo(a)Anthracene

Benzo(b)F = Benzo(b)Fluoranthene

Benzo(k)F = Benzo(k)Fluoranthene

Benzo(a)P = Benzo(a)Pyrene

D (a,h) A = Dibenz(a,h)Anthracene

1,2,3-CD = Indeno(1,2,3-cd)Pyrene

1-M = 1-Methylnaphthalene

2-M = 2-Methylnaphthalene

BOLD = Analytical result is in exceedance of ECMC Table 915-1: Organic Compounds in Soils - Protection of Groundwater Soil Screening Level Concentrations

BOLD = Analytical result is in exceedance of ECMC Table 915-1: Organic Compounds in Soils - Residential Soil Screening Level Concentrations

- = Not applicable or constituent not analyzed

TABLE 4
COTTONWOOD CREEK 4-65 27 1H
SOIL ANALYTICAL DATA - METALS
CRESTONE PEAK RESOURCES OPERATING, LLC



Soil Sample Location	Depth	Date	Arsenic (mg/kg)	Barium (mg/kg)	Cadmium (mg/kg)	Chromium (VI) (mg/kg)	Copper (mg/kg)	Lead (mg/kg)	Nickel (mg/kg)	Selenium (mg/kg)	Silver (mg/kg)	Zinc (mg/kg)
ECMC Metals in Soils - GSSL ⁽¹⁾			0.29	82	0.38	0.00067	46	14	26	0.26	0.8	370
ECMC Metals in Soils - RSL ⁽²⁾			0.68	15,000	71	0.3	3,100	400	1,500	390	390	23,000
BG09@6"	6"	02/17/2025	Pending	Pending	Pending	Pending	Pending	Pending	Pending	Pending	Pending	Pending
BG09@1'	1'	02/17/2025	Pending	Pending	Pending	Pending	Pending	Pending	Pending	Pending	Pending	Pending
BG09@6'	6'	02/17/2025	Pending	Pending	Pending	Pending	Pending	Pending	Pending	Pending	Pending	Pending
BG10@6"	6"	02/17/2025	Pending	Pending	Pending	Pending	Pending	Pending	Pending	Pending	Pending	Pending
BG10@1'	1'	02/17/2025	Pending	Pending	Pending	Pending	Pending	Pending	Pending	Pending	Pending	Pending
BG10@6'	6'	02/17/2025	Pending	Pending	Pending	Pending	Pending	Pending	Pending	Pending	Pending	Pending
Highest Background @ 3" - 7' x1.25 (SW)			-	-	-	-	-	-	-	-	-	-

Notes:

(1) Standards for soil are taken from ECMC Table 915-1: Metals in Soils - Protection of Groundwater Soil Screening Level Concentrations (Effective January 15, 2021)

(2) Standards for soil are taken from ECMC Table 915-1: Metals in Soils - Residential Soil Screening Level Concentrations (Effective January 15, 2021)

ECMC = Colorado Energy & Carbon Management Commission

GSSL = Protection of Groundwater Screening Level

RSL = Residential Soil Screening Level

(<) = Analytical result is less than the indicated laboratory minimum detection limit

mg/kg = milligrams per kilogram

BOLD = Analytical result is in exceedance of ECMC Table 915-1: Metals in Soils - Protection of Groundwater Soil Screening Level Concentrations

BOLD = Analytical result is in exceedance of ECMC Table 915-1: Metals in Soils - Residential Soil Screening Level Concentrations

Italics = Laboratory minimum detection limit exceeds the ECMC Table 915-1 Standard

- = Not applicable or constituent not analyzed

Pending = Analytical results pending final laboratory reporting

TABLE 5
COTTONWOOD CREEK 4-65 27 1H
SOIL ANALYTICAL DATA - SOIL RECLAMATION
CRESTONE PEAK RESOURCES OPERATING, LLC



Soil Sample Location	Depth	Date	pH	SAR	EC (mmhos/cm)	Boron (mg/L)
ECMC Soil Suitability for Reclamation⁽¹⁾			6 - 8.3	< 6	< 4	2
WH-B01@7'	7'	12/20/2024	7.87	1.06	0.570	<2.00
WH-N01@6'	6'	12/20/2024	7.80	1.34	0.335	<2.00
WH-S01@6'	6'	12/20/2024	7.95	1.44	0.481	<2.00
WH-E01@6'	6'	12/20/2024	10.9	1.93	9.86	<2.00
WH-W01@6'	6'	12/20/2024	8.39	1.06	0.235	<2.00
FL-B01@3'	3'	12/20/2024	8.66	0.587	0.132	<2.00
SP-CS01	-	12/20/2024	8.20	1.81	0.338	<2.00
FL-B03@3'	3'	12/20/2024	8.55	0.165	0.119	<2.00
SEP-B01@3"	3"	12/20/2024	8.72	0.311	0.123	<2.00
SEP-B02@3'	3'	12/20/2024	8.34	0.497	0.251	<2.00
SP-CS02	-	12/20/2024	8.15	0.224	0.374	<2.00
2PSEP-B01@3"	3"	12/20/2024	8.61	0.493	0.179	<2.00
2PSEP-B02@6"	6"	12/20/2024	8.35	0.38	0.292	<2.00
AST1-B01@3"	3"	12/20/2024	8.78	0.646	0.148	<2.00
AST2-B01@3"	3"	12/20/2024	8.94	0.371	0.099	<2.00
AST3-B01@3"	3"	12/20/2024	9.17	0.780	0.212	<2.00
AST4B01@3"	3"	12/20/2024	8.83	0.567	0.145	<2.00
PJ-B01@1'	1'	12/20/2024	9.49	0.501	0.146	<2.00
SP-CS03	-	12/20/2024	8.43	0.189	0.180	<2.00
BACKGROUND						
BG01@3"	3"	02/13/2025	Pending	Pending	Pending	Pending
BG01@3'	3'	02/13/2025	Pending	Pending	Pending	Pending
BG01@7'	7'	02/13/2025	Pending	Pending	Pending	Pending
BG02@3"	3"	02/13/2025	Pending	Pending	Pending	Pending
BG02@3'	3'	02/13/2025	Pending	Pending	Pending	Pending
BG02@7'	7'	02/13/2025	Pending	Pending	Pending	Pending
BG03@3"	3"	02/13/2025	Pending	Pending	Pending	Pending
BG03@3'	3'	02/13/2025	Pending	Pending	Pending	Pending
BG03@7'	7'	02/13/2025	Pending	Pending	Pending	Pending

TABLE 5
COTTONWOOD CREEK 4-65 27 1H
SOIL ANALYTICAL DATA - SOIL RECLAMATION
CRESTONE PEAK RESOURCES OPERATING, LLC



Soil Sample Location	Depth	Date	pH	SAR	EC (mmhos/cm)	Boron (mg/L)
ECMC Soil Suitability for Reclamation⁽¹⁾			6 - 8.3	< 6	< 4	2
BG04@3"	3"	02/13/2025	Pending	Pending	Pending	Pending
BG04@3'	3'	02/13/2025	Pending	Pending	Pending	Pending
BG04@7'	7'	02/13/2025	Pending	Pending	Pending	Pending
BG05@3"	3"	02/13/2025	Pending	Pending	Pending	Pending
BG05@3'	3'	02/13/2025	Pending	Pending	Pending	Pending
BG05@7'	7'	02/13/2025	Pending	Pending	Pending	Pending
BG06@6"	6"	02/17/2025	Pending	Pending	Pending	Pending
BG06@1'	1'	02/17/2025	Pending	Pending	Pending	Pending
BG06@6'	6'	02/17/2025	Pending	Pending	Pending	Pending
BG07@6"	6"	02/17/2025	Pending	Pending	Pending	Pending
BG07@1'	1'	02/17/2025	Pending	Pending	Pending	Pending
BG07@6'	6'	02/17/2025	Pending	Pending	Pending	Pending
BG08@6"	6"	02/17/2025	Pending	Pending	Pending	Pending
BG08@1'	1'	02/17/2025	Pending	Pending	Pending	Pending
BG08@6'	6'	02/17/2025	Pending	Pending	Pending	Pending
BG09@6"	6"	02/17/2025	Pending	Pending	Pending	Pending
BG09@1'	1'	02/17/2025	Pending	Pending	Pending	Pending
BG09@6'	6'	02/17/2025	Pending	Pending	Pending	Pending
BG10@6"	6"	02/17/2025	Pending	Pending	Pending	Pending
BG10@1'	1'	02/17/2025	Pending	Pending	Pending	Pending
BG10@6'	6'	02/17/2025	Pending	Pending	Pending	Pending
Highest Background @ 3' - 7' x1.25 (SW)			-	-	-	-

Notes:

(1) Standards for soil are taken from ECMC Table 915-1: Soil Suitability for Reclamation (Effective January 15, 2021)

ECMC = Colorado Energy & Carbon Management Commission

(<) = Analytical result is less than the indicated laboratory reporting limit

mmhos/cm = millimhos per centimeter

mg/L = milligrams per liter

pH = Potential of Hydrogen

SAR = Sodium Adsorption Ratio

EC = Electrical Conductivity

BOLD = Analytical result is in exceedance of ECMC Table 915-1: Soil Suitability for Reclamation Concentrations

- = Not applicable or constituent not analyzed

TABLE 5
COTTONWOOD CREEK 4-65 27 1H
SOIL ANALYTICAL DATA - SOIL RECLAMATION
CRESTONE PEAK RESOURCES OPERATING, LLC



Soil Sample Location	Depth	Date	pH	SAR	EC (mmhos/cm)	Boron (mg/L)
ECMC Soil Suitability for Reclamation ⁽¹⁾			6 - 8.3	< 6	< 4	2

Pending = Analytical results pending final laboratory reporting