

Excavation remains open at the location of the former Pinnacle 9, 10, 15, 16, 37-2 Wellheads. Snow has accumulated. Orange construction fencing has fallen.



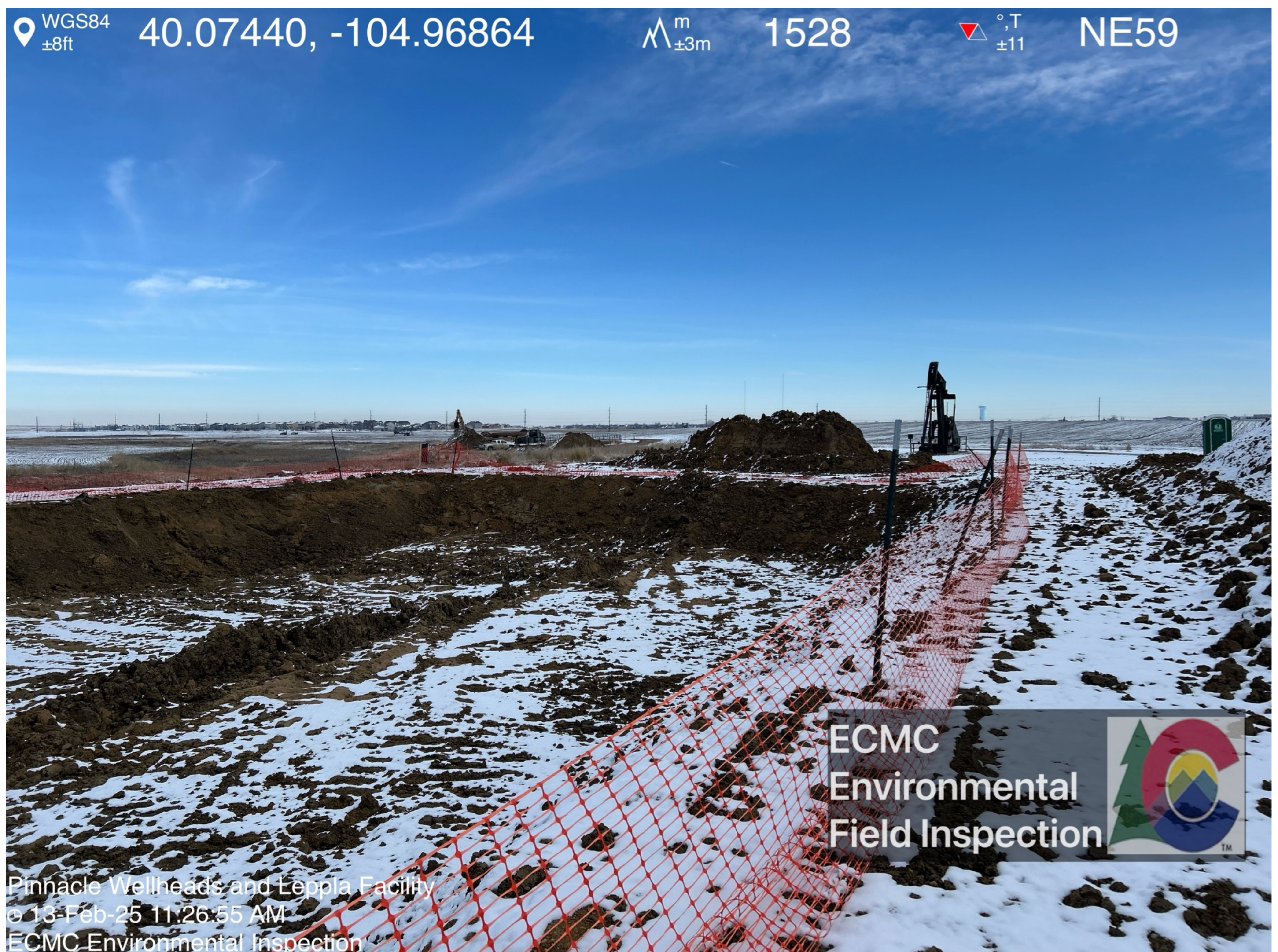
Multiple unmarked soil stockpiles are present on location; BMPs are adequate.





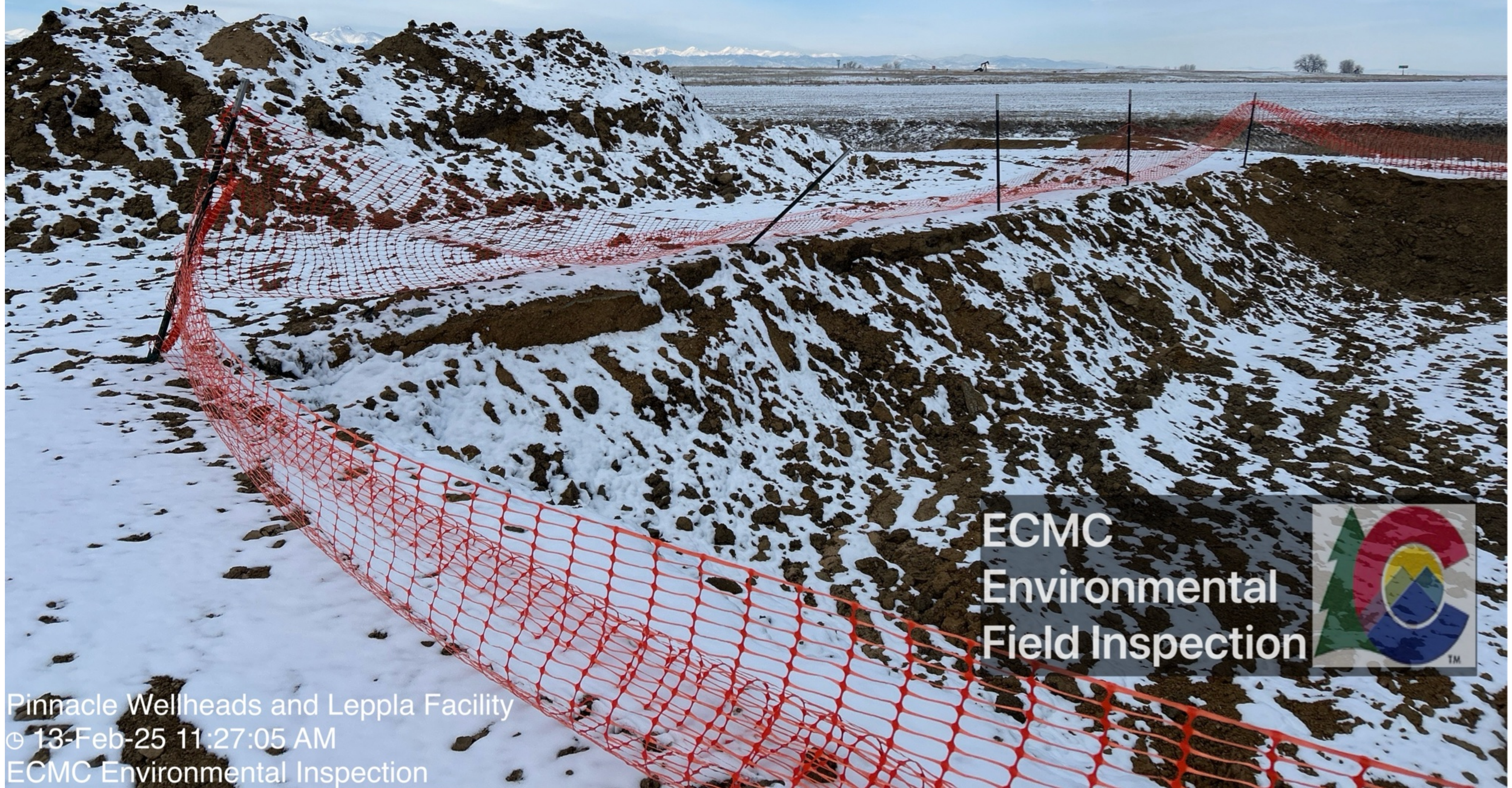


Excavation remains open at the location of the former Leppla 16-2 Facility production tanks and produced water vaults. Snow has accumulated. Orange construction fencing has fallen.



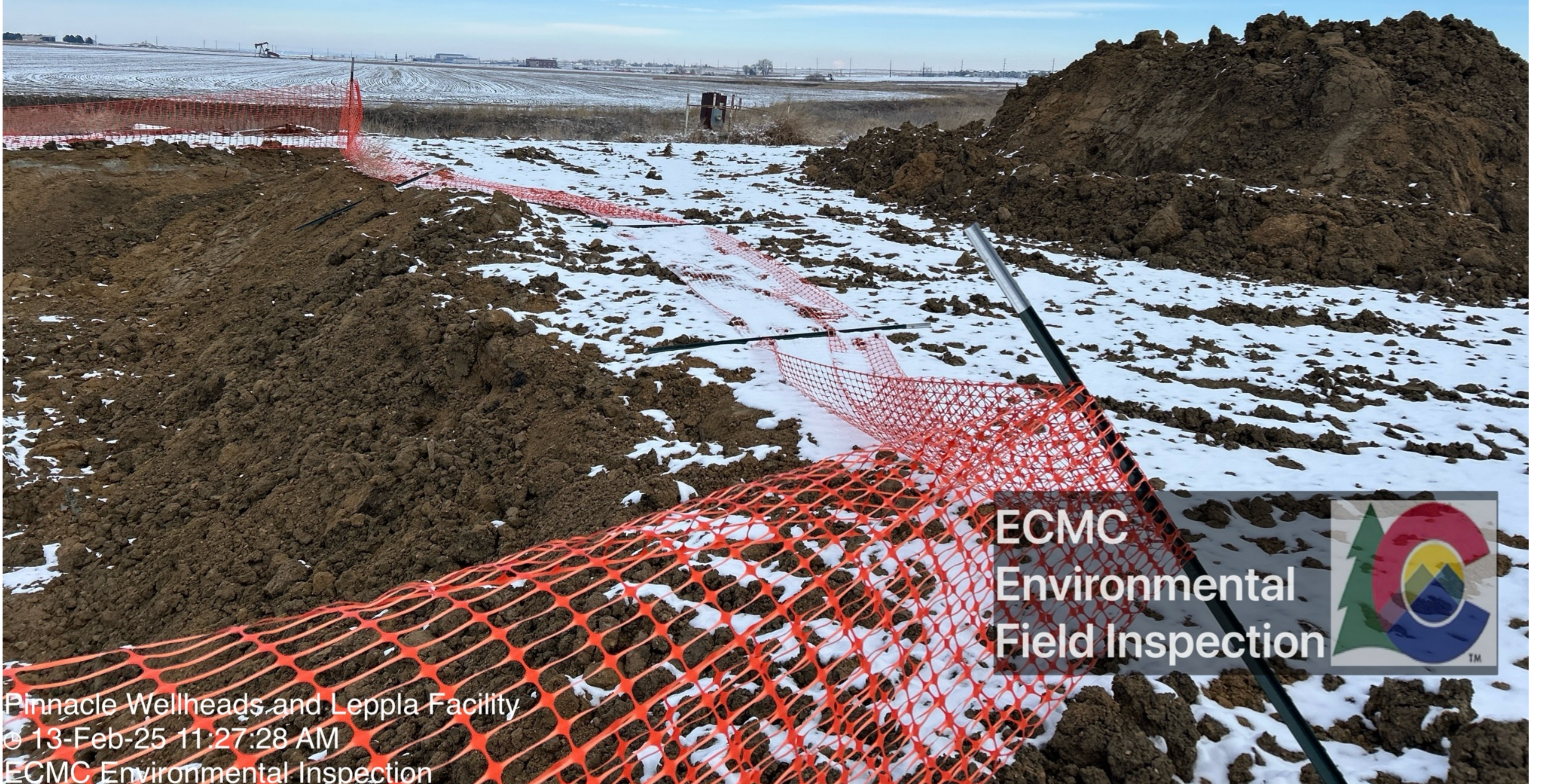


WGS84  $\pm 9\text{ft}$  40.07441, -104.96864  $\Delta^m_{\pm 3\text{m}}$  1526  $\Delta^{\circ,T}_{\pm 11}$  NW307



Pinnacle Wellheads and Leppla Facility  
© 13-Feb-25 11:27:05 AM  
ECMC Environmental Inspection

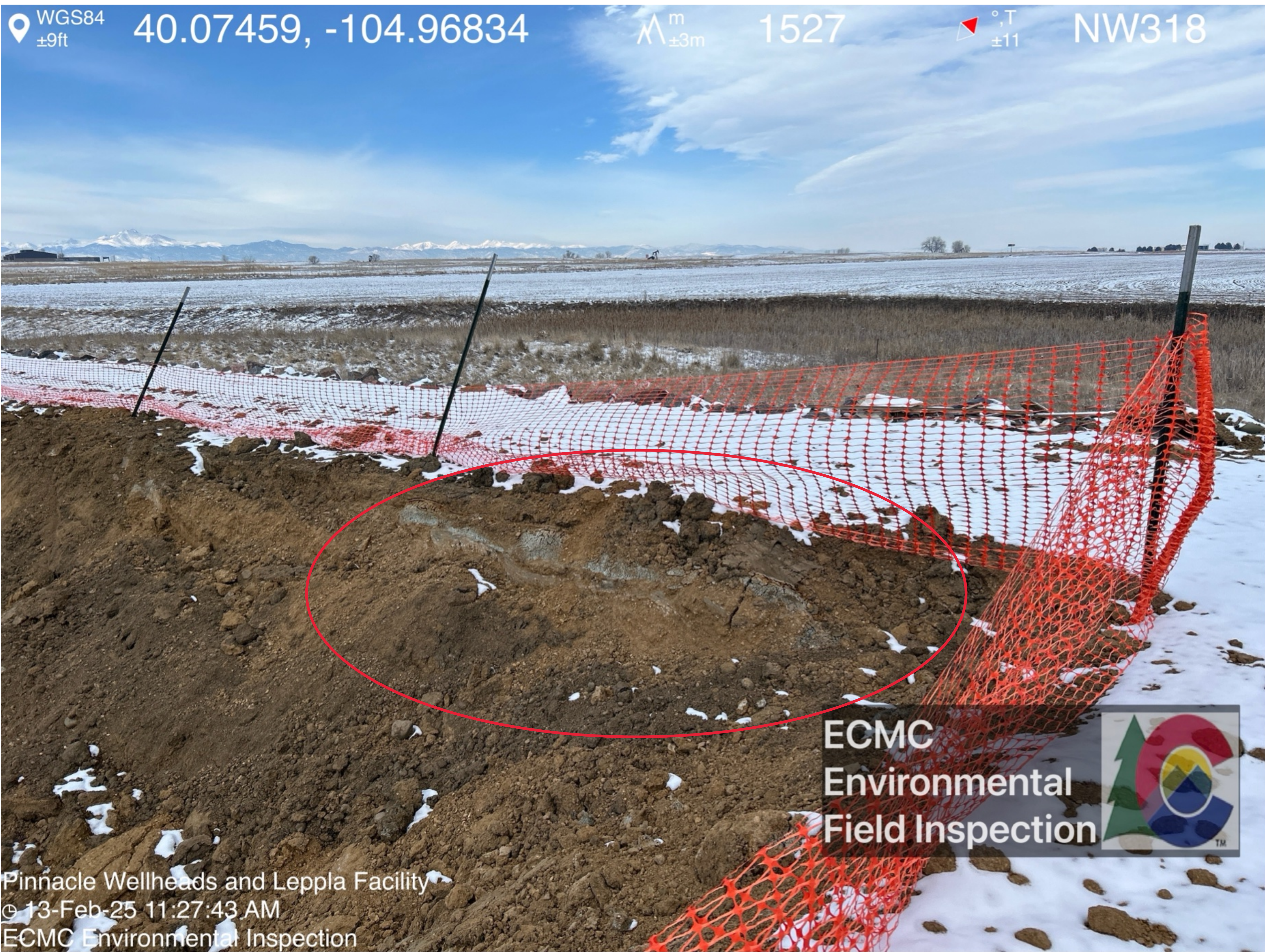
WGS84  $\pm 9\text{ft}$  40.07443, -104.96833  $\Delta^m_{\pm 3\text{m}}$  1528  $\Delta^{\circ,T}_{\pm 11}$  NE18



Pinnacle Wellheads and Leppla Facility  
© 13-Feb-25 11:27:28 AM  
ECMC Environmental Inspection



Gray staining is visible in situ at the location of the former Leppla 16-2 Facility production tanks.





Excavations remains open at the location of the former Leppla 16-2 Facility separators (background). Multiple unmarked soil stockpiles are present on location; BMPs are adequate (foreground).



Snow has accumulated within the excavations. Orange construction fencing has fallen.





Unmarked soil stockpiles are present on location; BMPs are adequate.





Excavation remains open at the location of the former Pinnacle 2-2HZ Wellhead. Snow has accumulated. Orange construction fencing has fallen.

