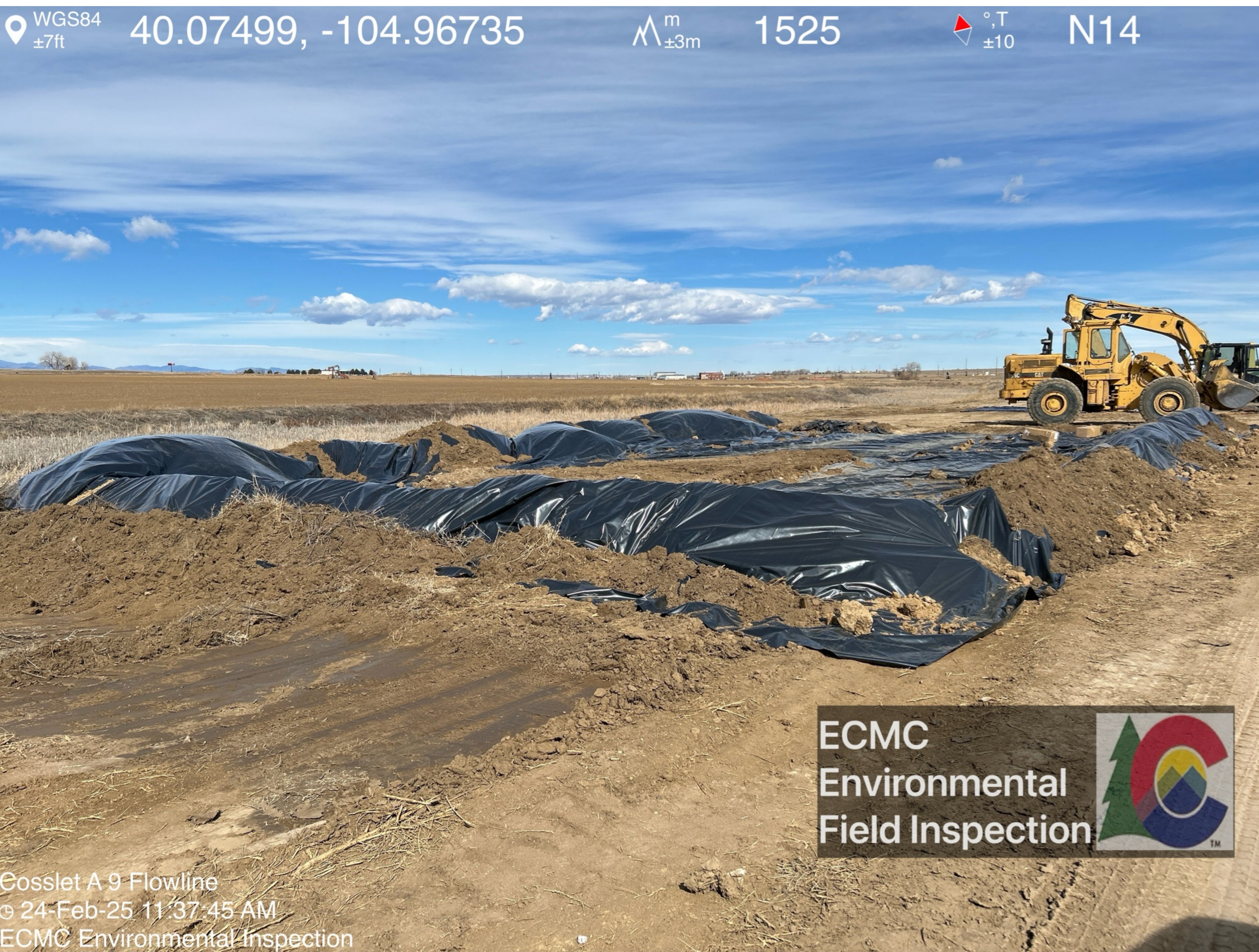


Operator personnel were on location at the time of inspection.



Stockpile previously labeled "clean" is no longer present on location. A liner has been installed on location.

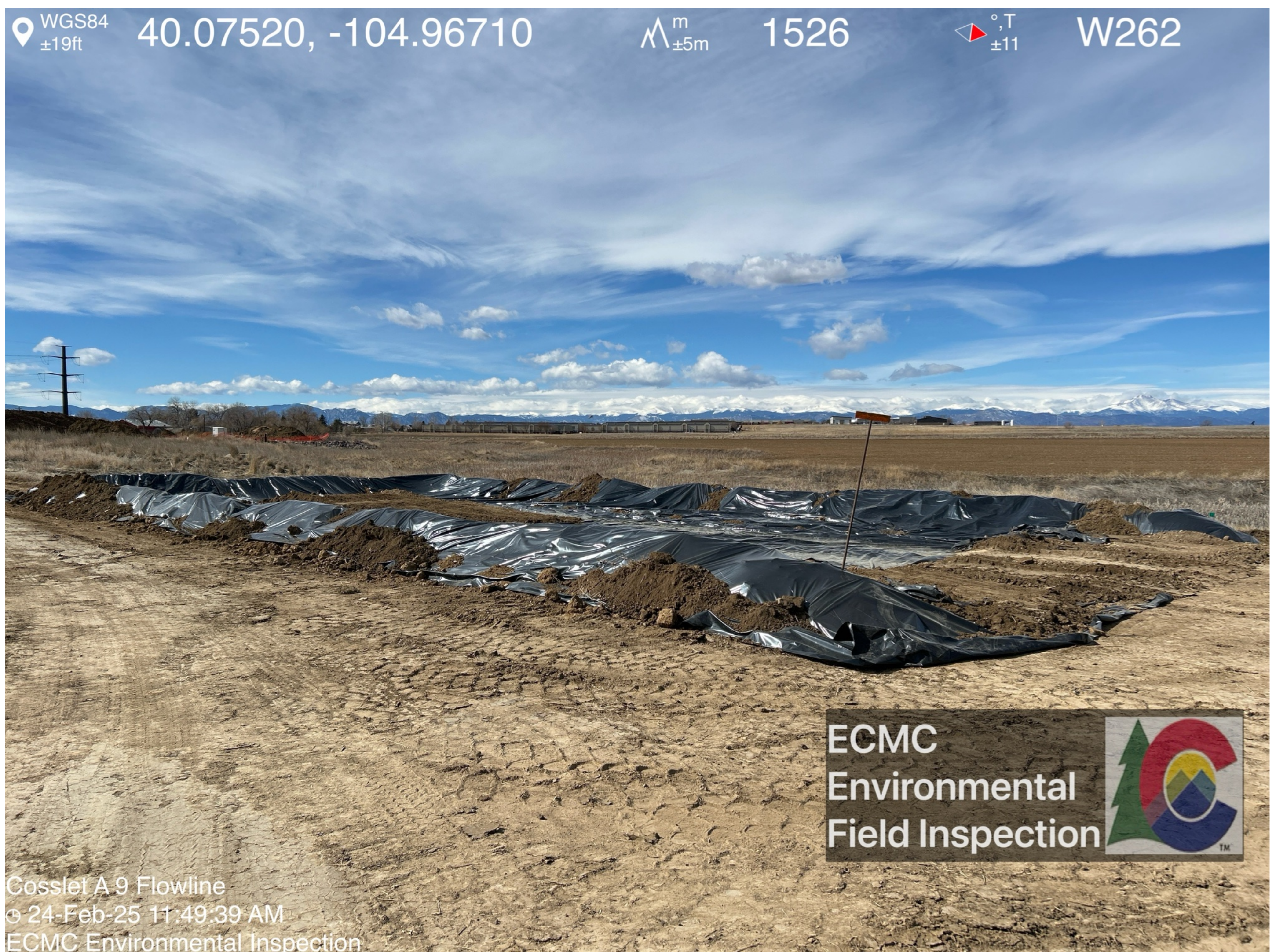




Tire marks are visible in adjacent field.



Berm with liner is marked "contaminated".





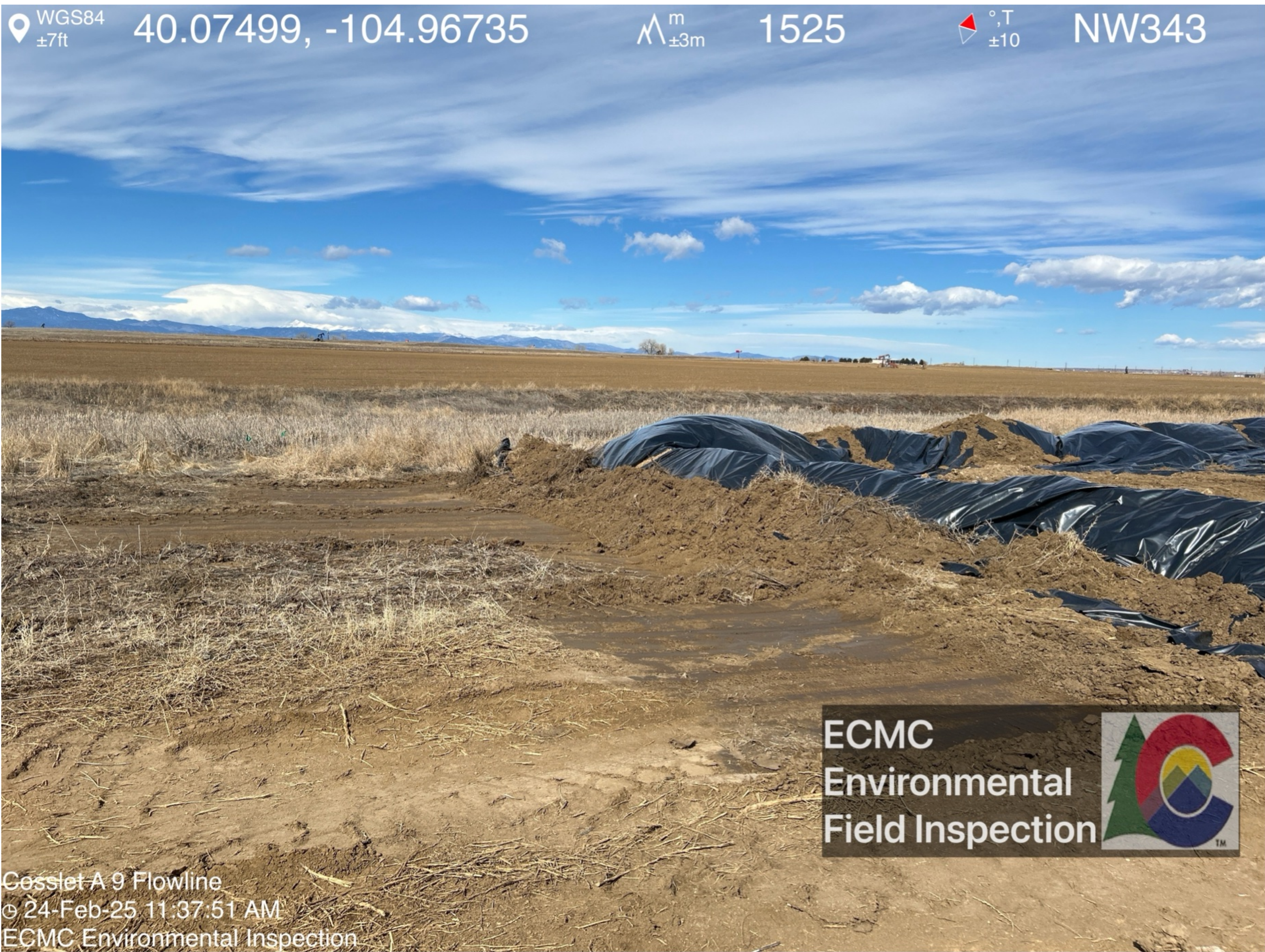


Liner condition appears to be adequate.





Nearby topsoil and vegetation appear to have been scraped to construct a berm under the liner.

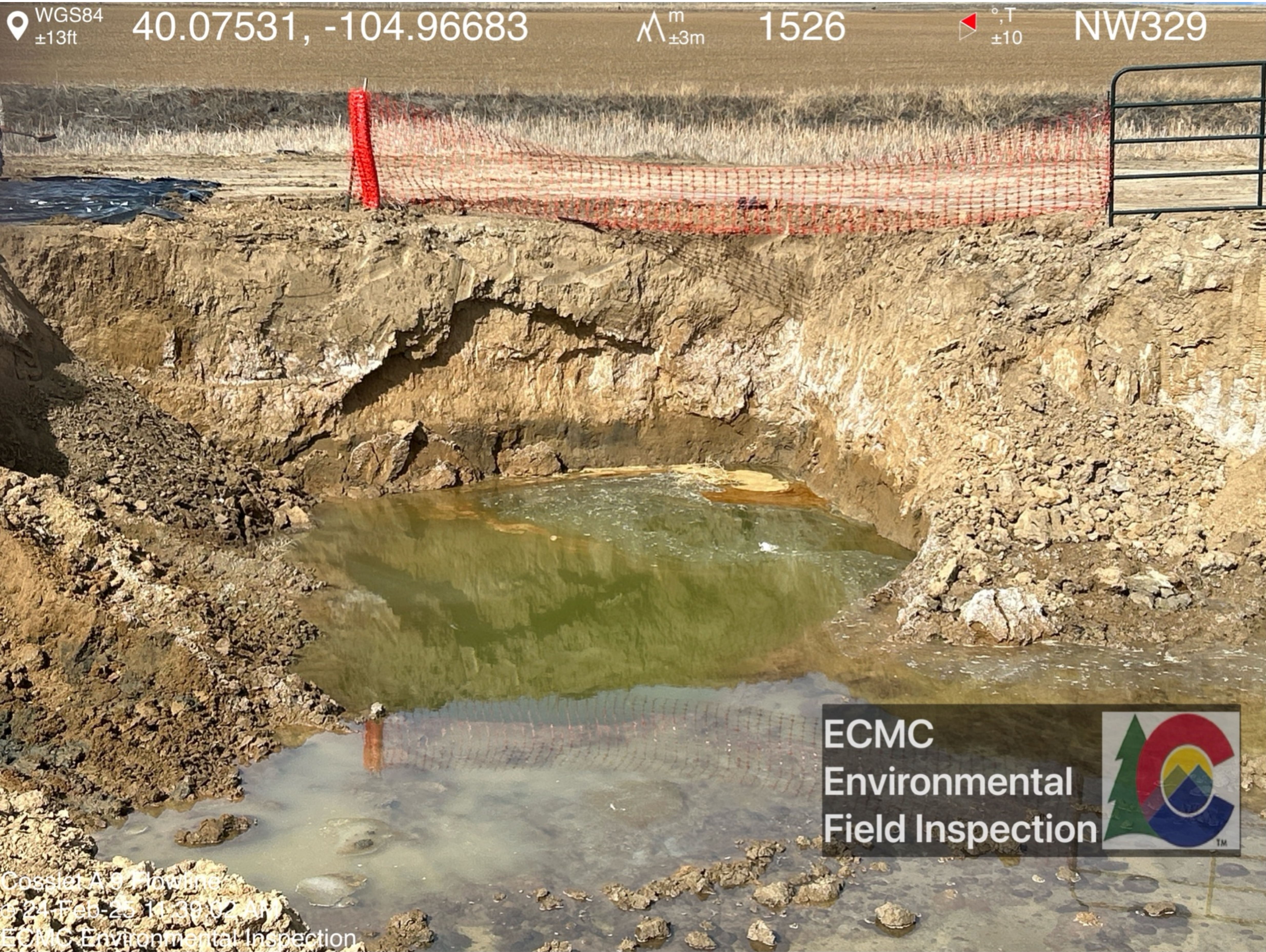


Excavation remains open. Minimal additional soil appears to have been excavated since the previous inspection on 02/13/2025. Gray and black petroleum hydrocarbon staining is visible in situ. Free product is visible on groundwater.





Gray and black petroleum hydrocarbon staining is visible on the sidewalls of the excavation. Free product is visible on groundwater.



Gray and black petroleum hydrocarbon staining is visible in situ on the excavation sidewalls.





Groundwater is visible covering the deeper portion of the excavation; free product is visible.



Exposed flowlines and weeds remain within the shallow portion of the excavation.





Gray and black petroleum hydrocarbon staining is visible in situ on the excavation sidewalls. Free product is visible on groundwater.

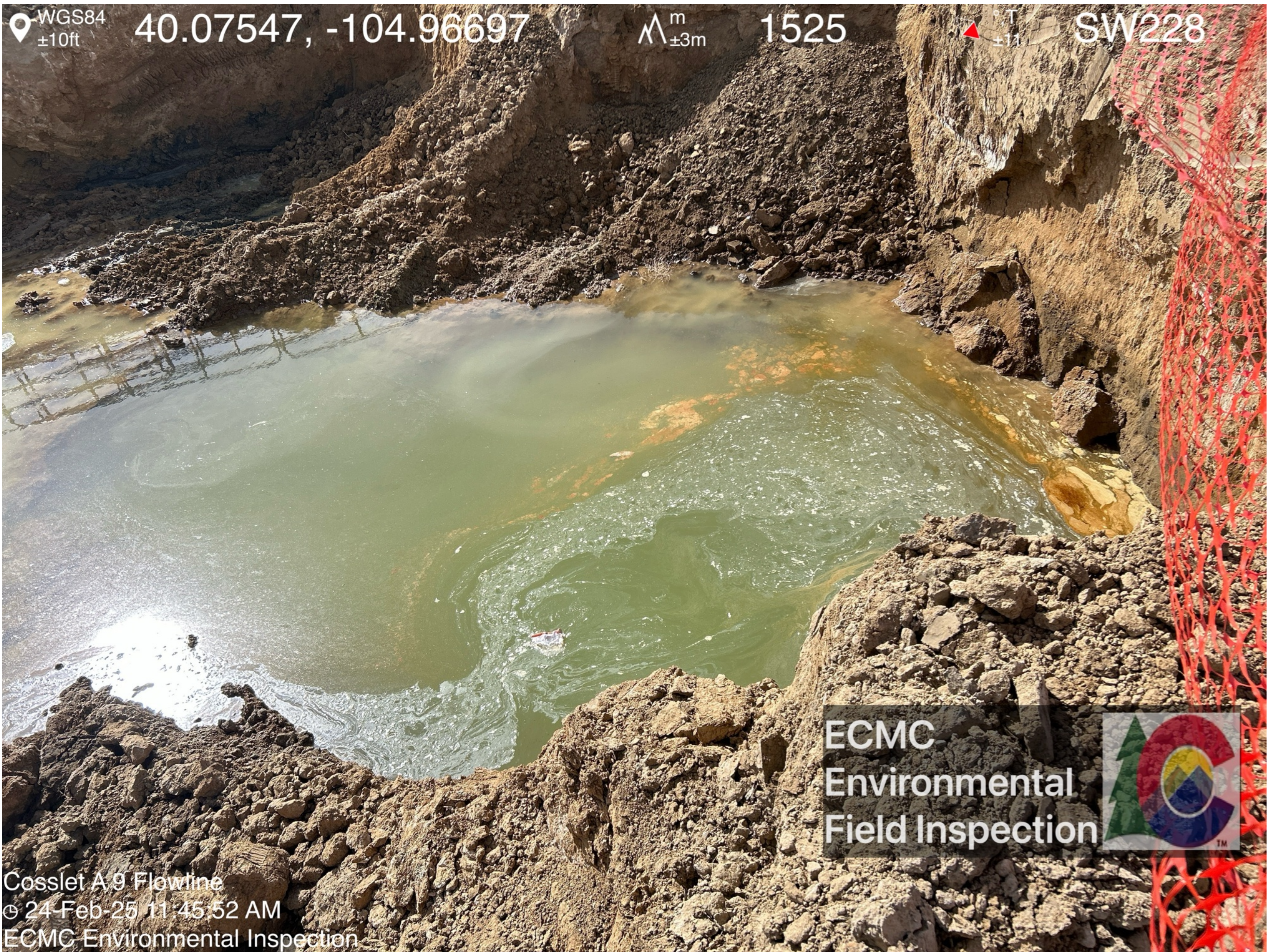




Operator personnel were observed extending the excavation to the southwest. Petroleum hydrocarbon odor was observed when soil was disturbed.



Free product is visible on groundwater.



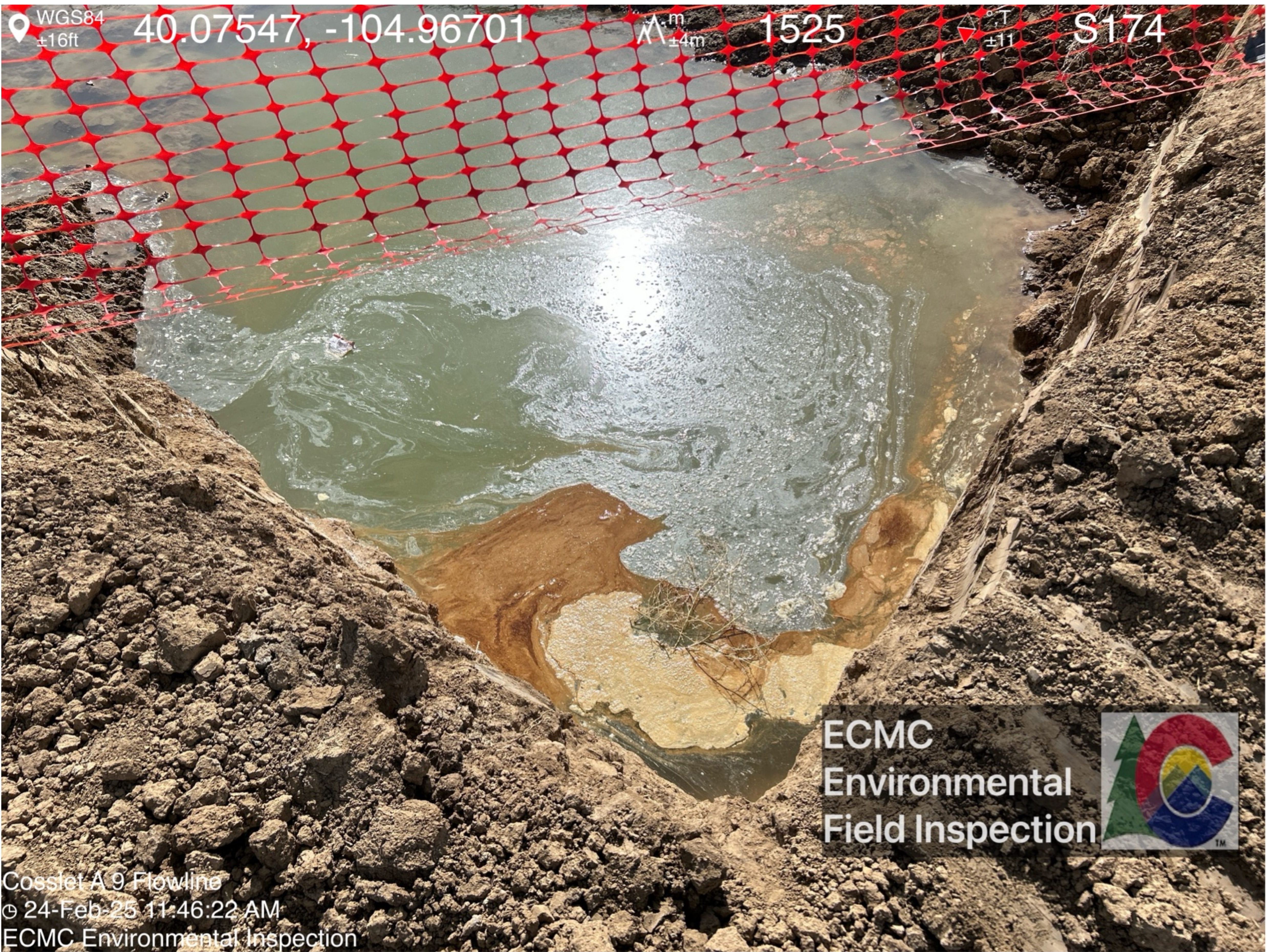


Gray and black petroleum hydrocarbon staining is visible in situ.





Free product is visible on groundwater. Orange construction fencing does not fully encompass the perimeter of the excavation.



Metal fencing has been installed around portions of the excavation.

