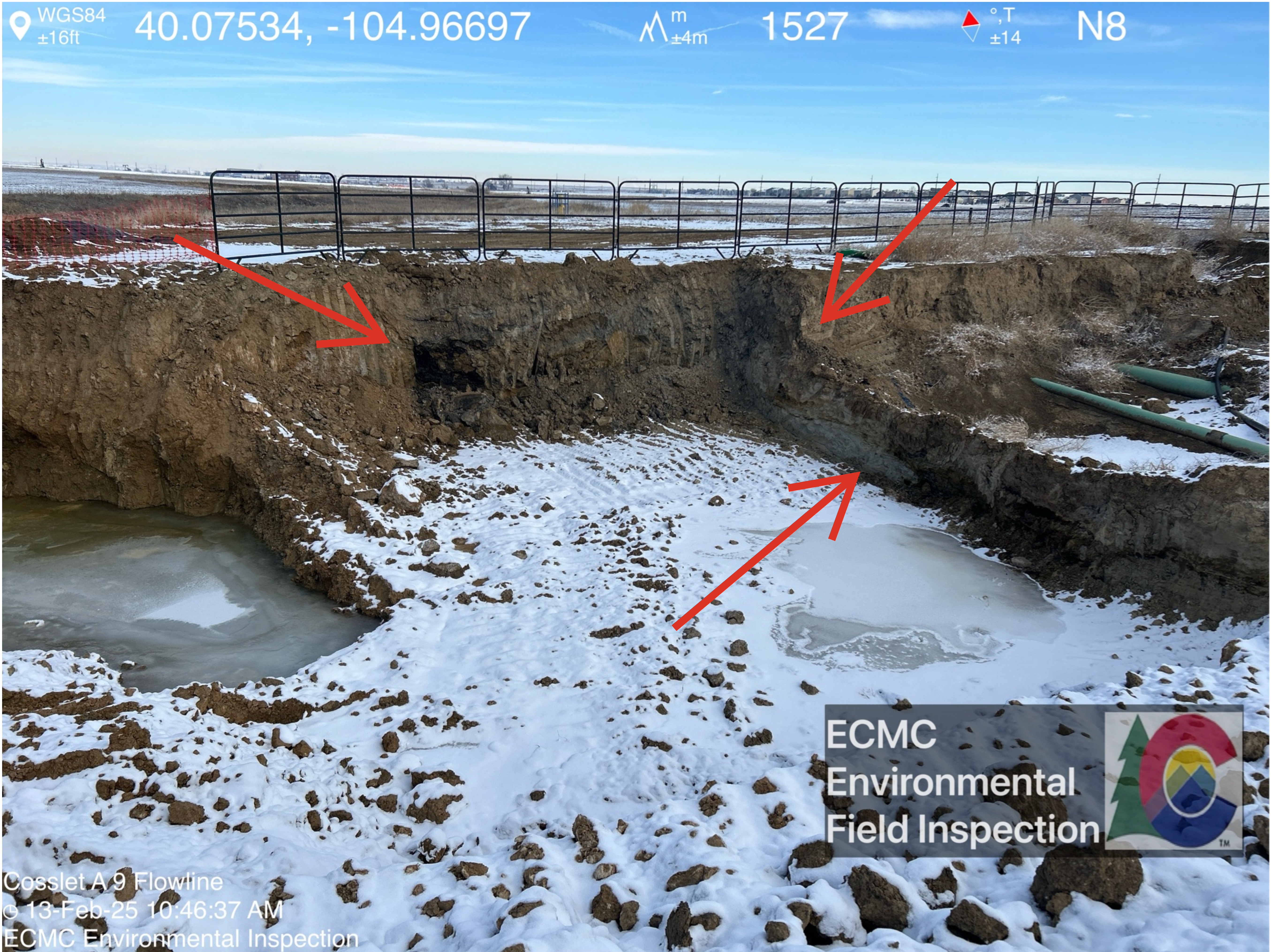


Excavation remains open. Exposed flowlines are visible within the northeastern portion of the excavation. Gray petroleum hydrocarbon staining is visible in situ. Frozen groundwater is visible at the base of the excavation. Weeds are visible within the excavation.

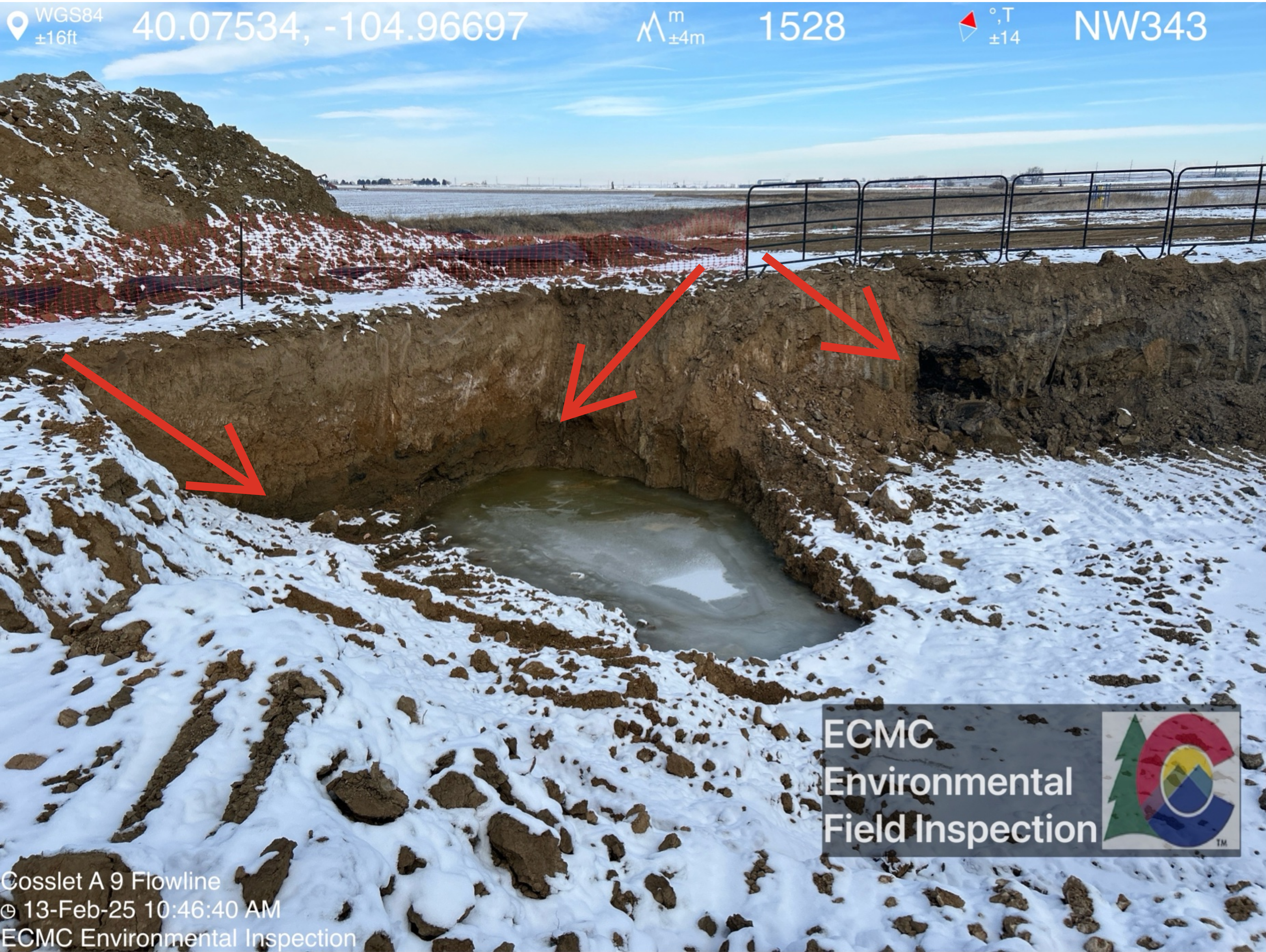


Gray and black petroleum hydrocarbon staining is visible in situ at multiple depths on the sidewalls of the excavation. Snow accumulation and frozen groundwater cover portions of the base of the excavation.





Gray and black petroleum hydrocarbon staining is visible in situ at multiple depths on the sidewalls of the excavation.



Two monitoring wells with metal monuments were observed on location.





Metal fencing has been installed around portions of the excavation.



Monitoring well one of two is visible in the foreground. The excavation and a soil stockpile are visible in background.

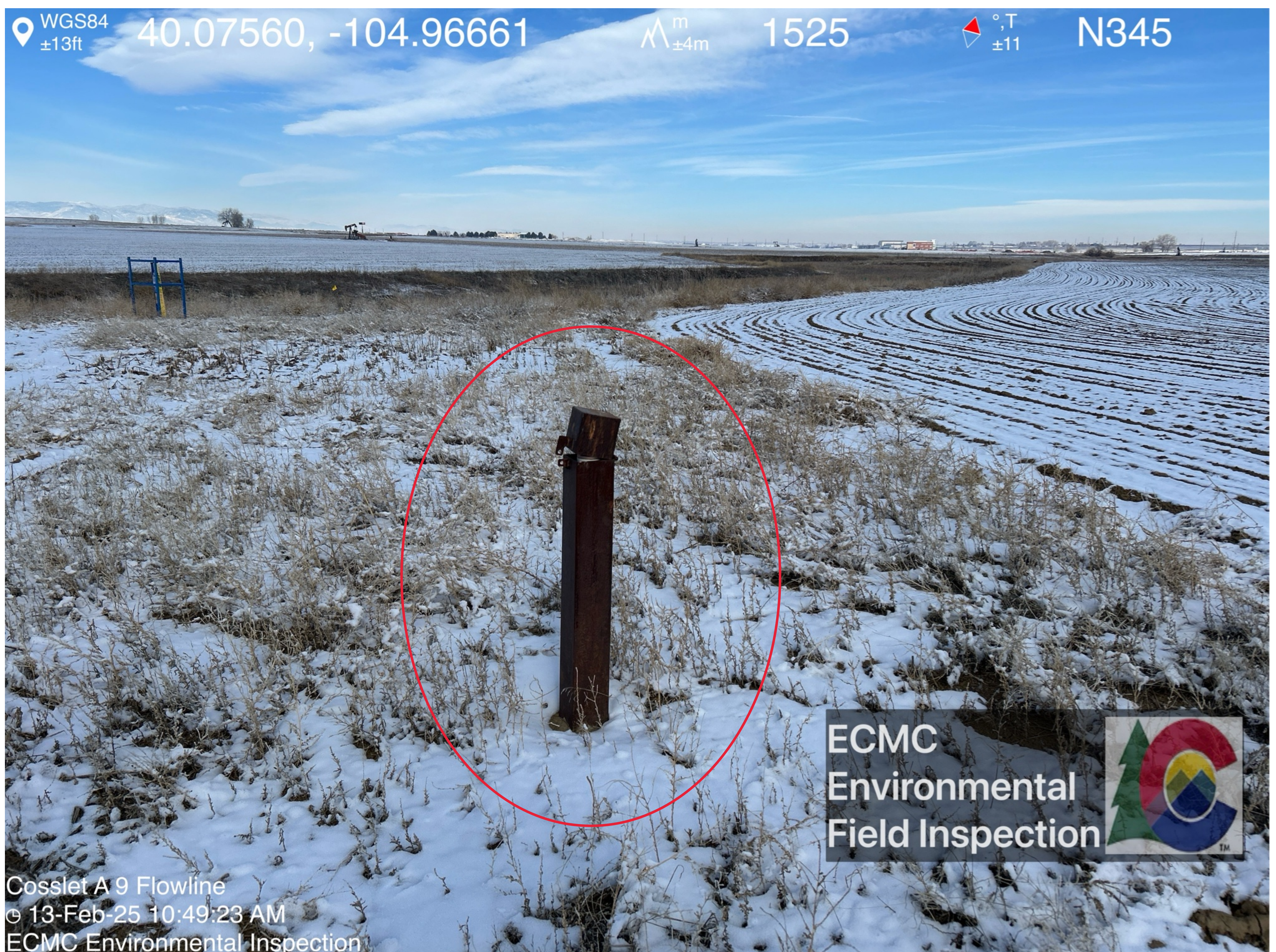




Weeds are visible around and within the metal fencing.



Monitoring well two of two observed.





Weeds are visible around and within the metal fencing.



Operator personnel were on location at the time of the inspection and were observed loading soil from a stockpile marked "contaminated" into trucks.





Orange construction fencing has been installed near a portion of the excavation but does not fully encompass the perimeter.

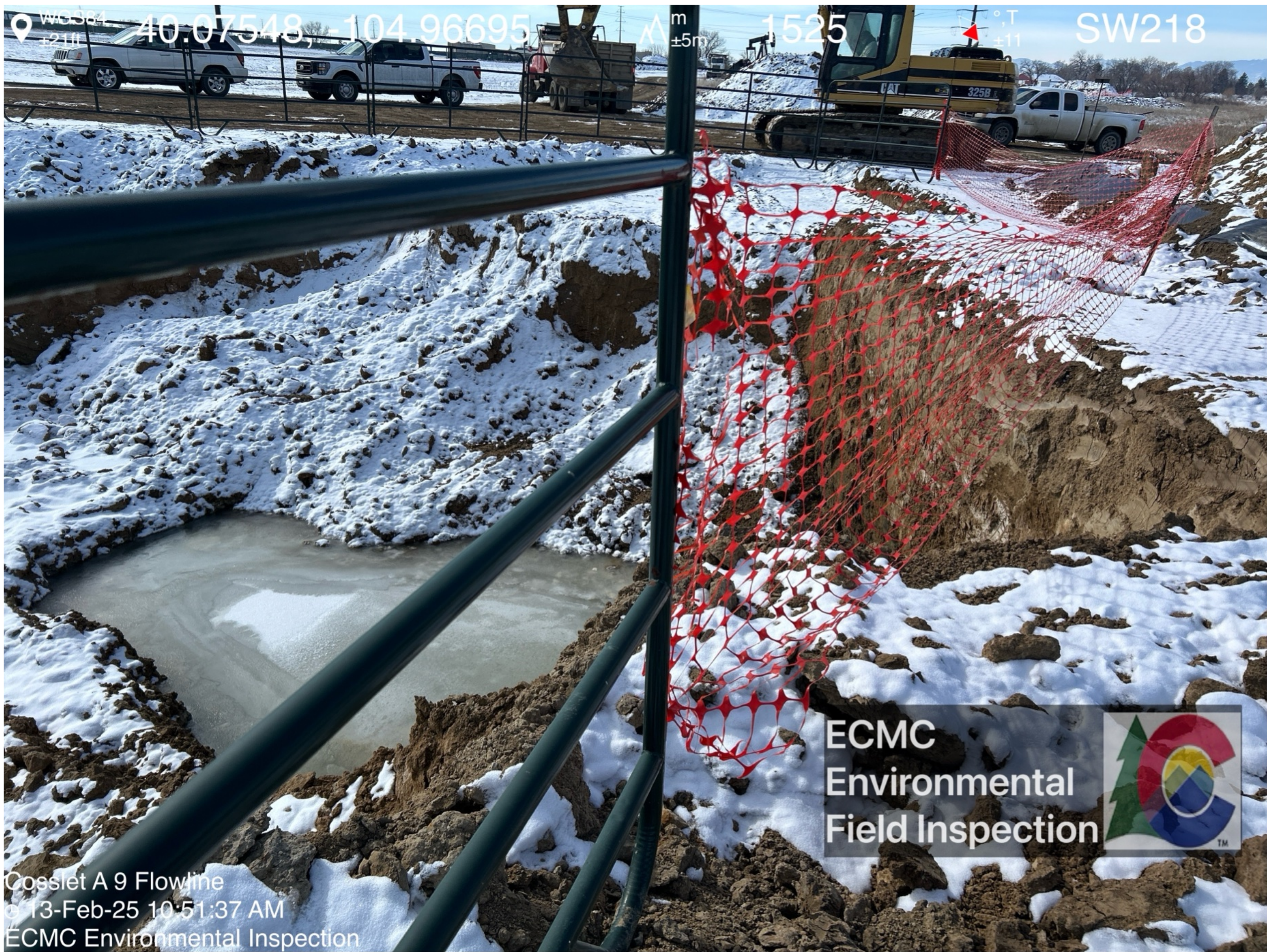


Gray petroleum hydrocarbon staining is visible in situ on the excavation sidewalls.





Frozen groundwater is visible at the base of the excavation.



Soil stockpile labeled "contaminated" is on a liner. Snow has covered portions of the stockpile and liner.





Operator personnel observed loading stockpiled soil labeled "contaminated" into trucks.



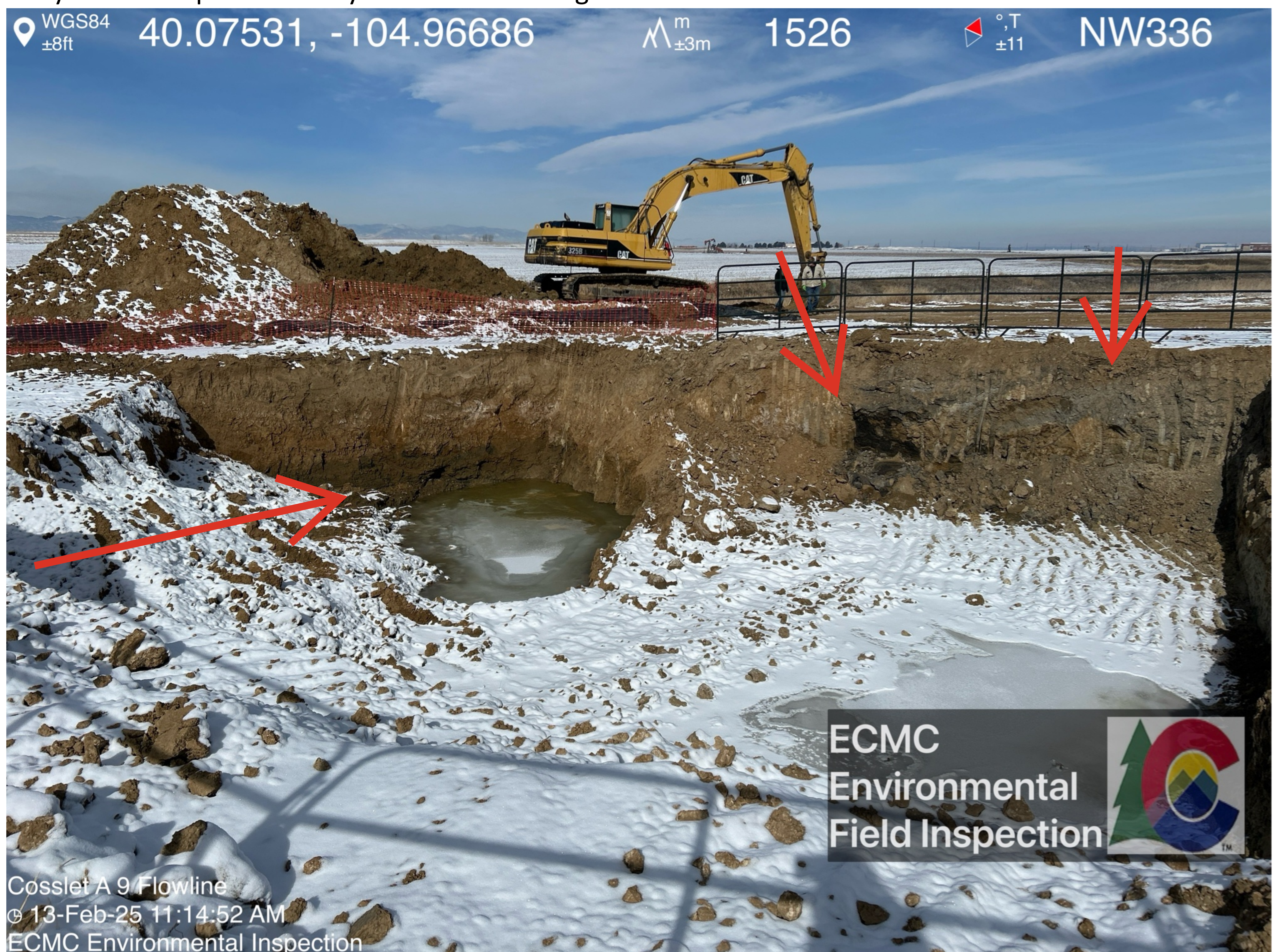
A strong petroleum hydrocarbon odor was observed when the soil stockpile labeled "contaminated" was disturbed.







Gray and black petroleum hydrocarbon staining are visible in situ on the excavation sidewalls.





Soil stockpile marked "contaminated".

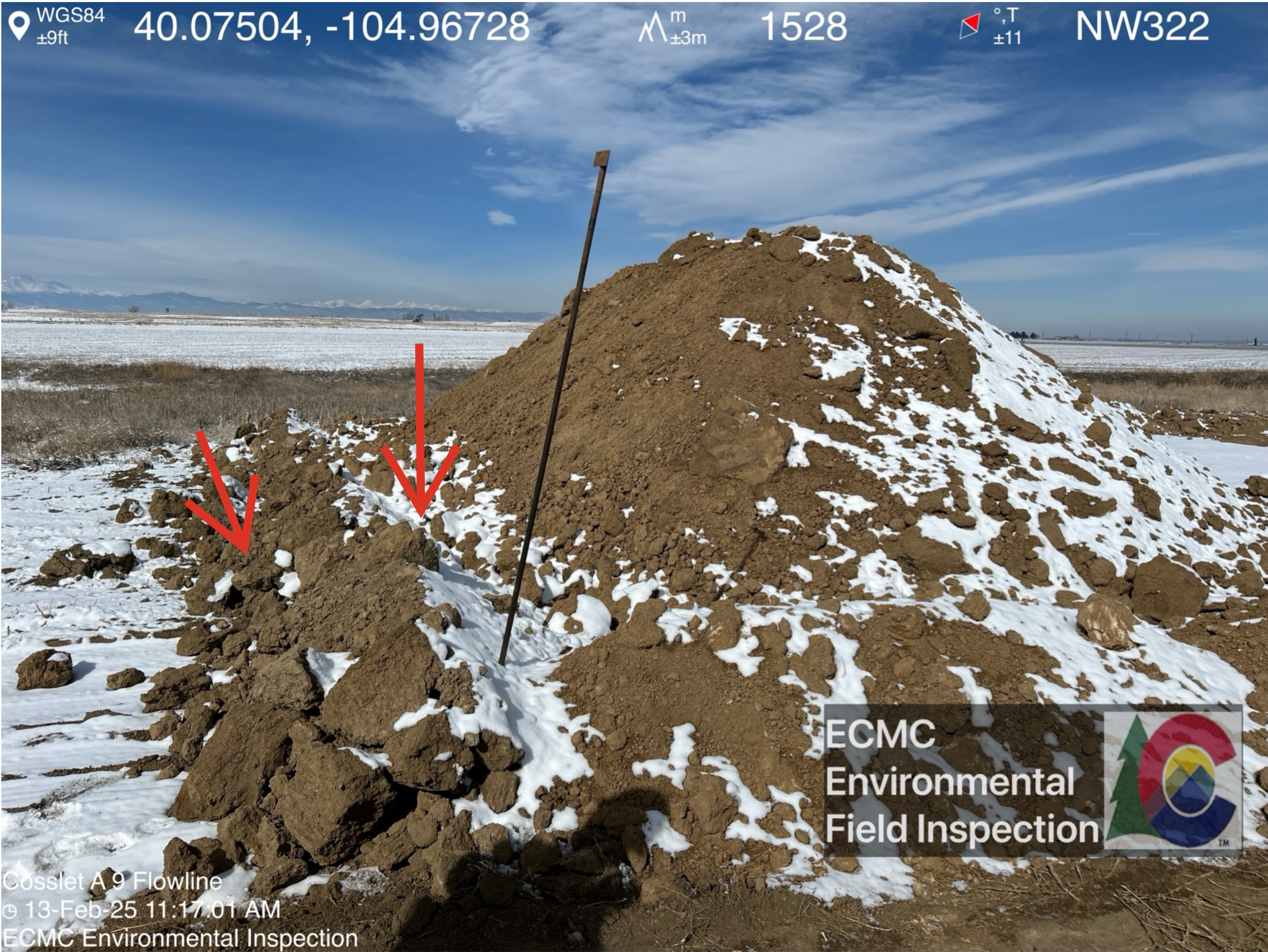


A second soil stockpile marked "clean" is visible in the foreground. The soil stockpile marked "contaminated" is visible in the background.





Areas of soil with gray petroleum hydrocarbon staining and a petroleum hydrocarbon odor were observed within the soil stockpile labeled “clean” and its associated berm.





One soil sample was collected from the most visibly impacted material within the "clean" stockpile.

