

## Inspection/Audit Photos

Location: TEP ROCKY MOUNTAIN LLC Chevron/TR 32-21-597 PAD

Location ID: 335603

Date: 02/24/2025



Feb 24, 2025 at 2:17:10 PM  
+39.602604,-108.282806 ±6.15m  
De Beque



Feb 24, 2025 at 3:06:27 PM  
+39.602539,-108.282461 ±4.00m  
De Beque

Photo # 5736 Entrance to location

Photo # 5766 Location

## Inspection/Audit Photos

Location: TEP ROCKY MOUNTAIN LLC Chevron/TR 32-21-597 PAD

Location ID: 335603

Date: 02/24/2025



Photo # 5737 Location



Photo # 5754 Location

## Inspection/Audit Photos

Location: TEP ROCKY MOUNTAIN LLC Chevron/TR 32-21-597 PAD

Location ID: 335603

Date: 02/24/2025

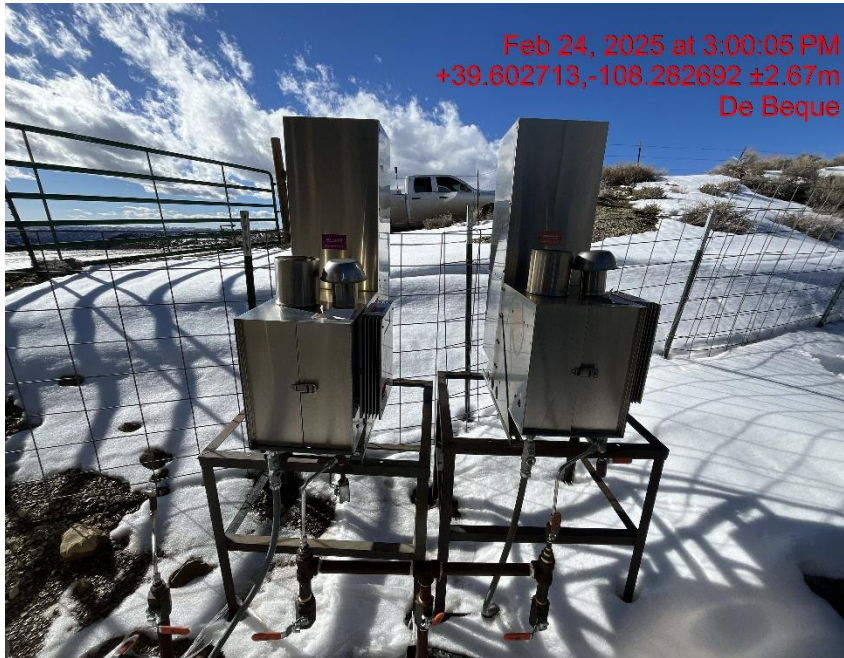


Photo # 5760 Location



Photo # 5765 Location

## Inspection/Audit Photos

Location: TEP ROCKY MOUNTAIN LLC Chevron/TR 32-21-597 PAD

Location ID: 335603

Date: 02/24/2025



Feb 24, 2025 at 3:39:31 PM  
+39.602461,-108.282145 ±4.22m  
De Beque

Photo # 5795 Location



Feb 24, 2025 at 3:42:51 PM  
+39.602410,-108.282749 ±3.48m  
De Beque

Photo # 5797 SW corner of location

## Inspection/Audit Photos

Location: TEP ROCKY MOUNTAIN LLC Chevron/TR 32-21-597 PAD

Location ID: 335603

Date: 02/24/2025



Photo # 5798 NW corner of location



Photo # 5799 NE corner of location

## Inspection/Audit Photos

Location: TEP ROCKY MOUNTAIN LLC Chevron/TR 32-21-597 PAD

Location ID: 335603

Date: 02/24/2025



Photo # 5800 SE corner of location



Photo # 5745 Failure to maintain chemical BMP's/chemical containments full of fluid & not sufficient to contain possible spill

## Inspection/Audit Photos

Location: TEP ROCKY MOUNTAIN LLC Chevron/TR 32-21-597 PAD

Location ID: 335603

Date: 02/24/2025



**Photo # 5748 Failure to maintain chemical BMP's/chemical containments full of fluid & not sufficient to contain possible spill**



**Photo # 5749 Failure to maintain chemical BMP's/chemical containments full of fluid & not sufficient to contain possible spill**

## Inspection/Audit Photos

Location: TEP ROCKY MOUNTAIN LLC Chevron/TR 32-21-597 PAD

Location ID: 335603

Date: 02/24/2025



**Photo # 5750 Failure to maintain chemical BMP's/chemical containments full of fluid & not sufficient to contain possible spill**



**Photo # 5751 Open ended piping on chemical pumps containments/wildlife hazard/available for entry by wildlife**

## Inspection/Audit Photos

Location: TEP ROCKY MOUNTAIN LLC Chevron/TR 32-21-597 PAD

Location ID: 335603

Date: 02/24/2025



**Photo # 5782 PRV vent lines on tank heaters do not comply with CECMC pressure safety device rules**



**Photo # 5783 PRV vent lines on tank heaters do not comply with CECMC pressure safety device rules**

## Inspection/Audit Photos

Location: TEP ROCKY MOUNTAIN LLC Chevron/TR 32-21-597 PAD

Location ID: 335603

Date: 02/24/2025



Photo # 5786 Open ended load lines



Photo # 5787 Open ended load line

## Inspection/Audit Photos

Location: TEP ROCKY MOUNTAIN LLC Chevron/TR 32-21-597 PAD

Location ID: 335603

Date: 02/24/2025



Photo # 5789 Open ended load line

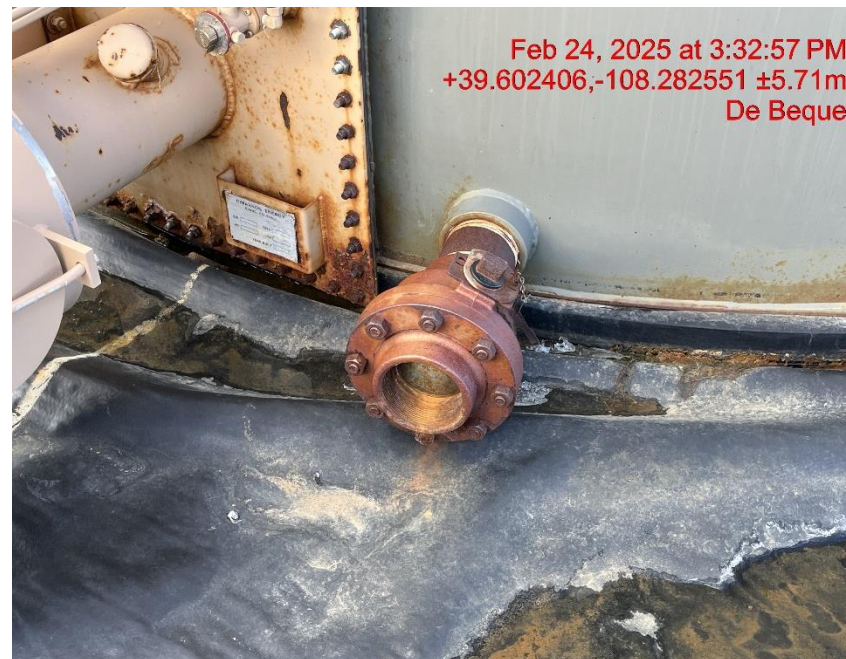


Photo # 5790 Open ended load line

## Inspection/Audit Photos

Location: TEP ROCKY MOUNTAIN LLC Chevron/TR 32-21-597 PAD

Location ID: 335603

Date: 02/24/2025

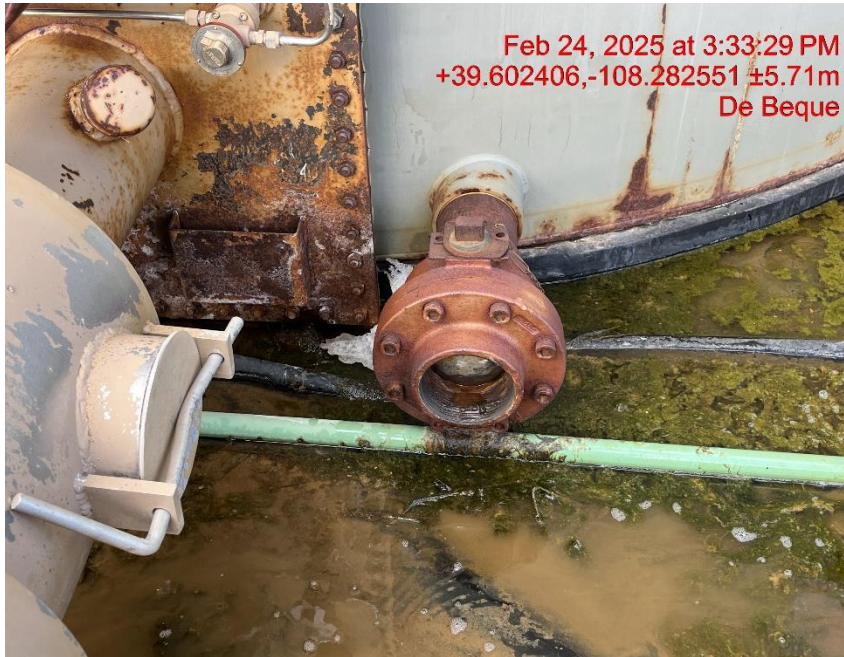


Photo # 5791 Open ended load line



Photo # 5792 Open ended load line

## Inspection/Audit Photos

Location: TEP ROCKY MOUNTAIN LLC Chevron/TR 32-21-597 PAD

Location ID: 335603

Date: 02/24/2025



Photo # 5793 Open ended load line



Photo # 5796 Unused hose