

NOTES:

- DISTANCES ARE MEASURED PERPENDICULAR TO NEAREST SECTION LINE AND ARE SHOWN ON THE SAME SIDE OF THE SECTION LINE WHERE THE WELL IS LOCATED.
- ALL LINEAL DISTANCES SHOWN USE THE INTERNATIONAL FOOT; DEFINED AS 1 INT FOOT = 0.3048 METERS.
- THIS MAP DOES NOT REPRESENT A MONUMENTED BOUNDARY SURVEY. SIXTEENTH CORNER LOCATIONS ARE COMPUTED, UNLESS OTHERWISE NOTED.
- BOTTOM HOLE LOCATIONS AND HORIZONTAL COMPLETION ZONE PROVIDED BY OTHERS.
- ALL REBAR AND CAPS ARE MEASURED IN INCHES.
- ELEVATIONS ARE BASED ON THE NORTH AMERICAN VERTICAL DATUM OF 1988 AS MEASURED BY GNSS OBSERVATIONS USING GEOID 18.

BASIS OF BEARING:

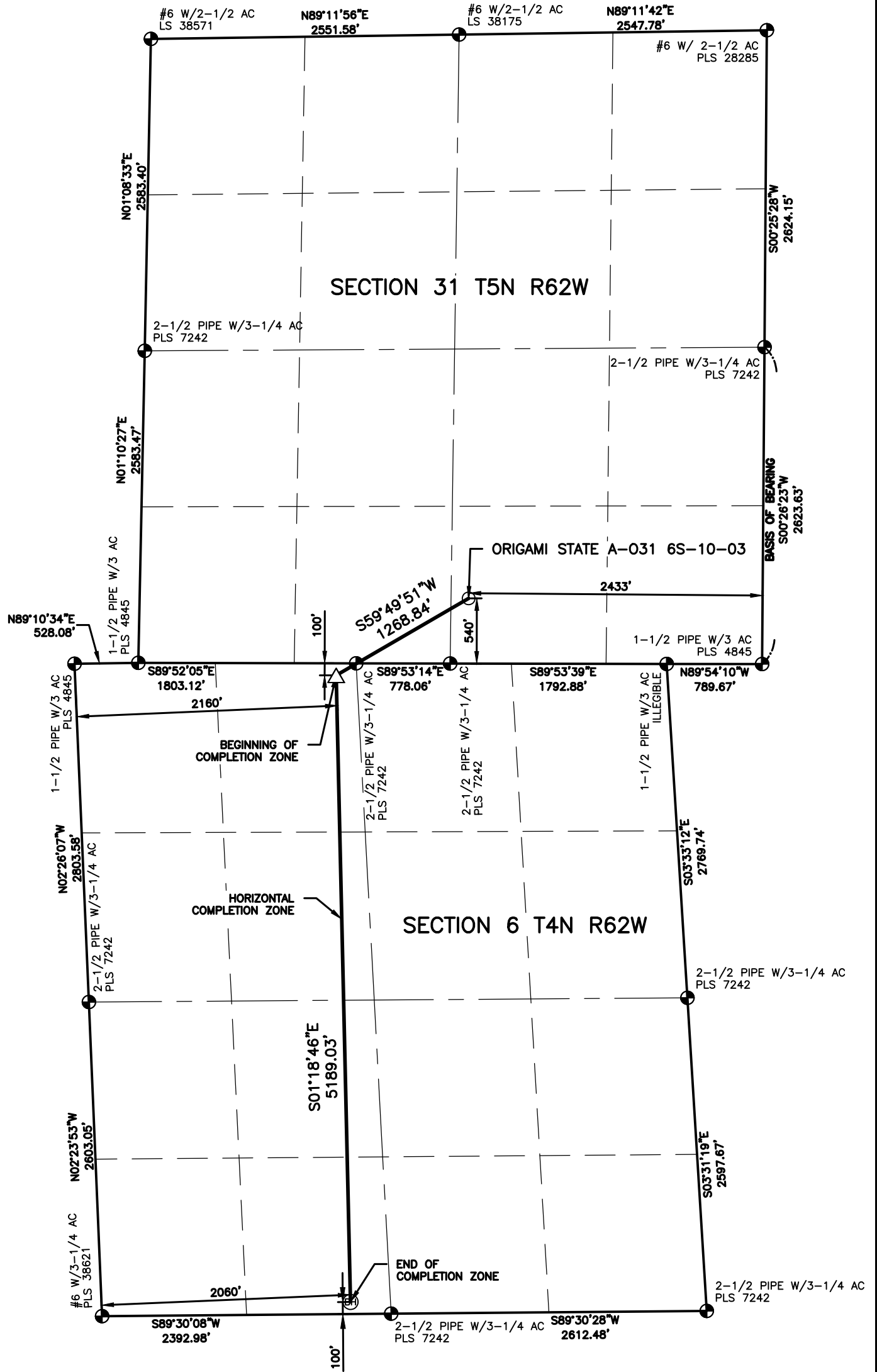
THE EAST LINE OF THE SOUTHEAST QUARTER OF SECTION 31-T5N-R62W BEARS S00°26'23"W FOR A DISTANCE OF 2623.63' FEET BETWEEN THE EAST QUARTER CORNER OF SECTION 31 MONUMENTED BY A 2-1/2" PIPE WITH A 3-1/4" ALUMINUM CAP STAMPED, "PLS 7242", AND AT THE SOUTHEAST CORNER OF SECTION 31, MONUMENTED BY A 1-1/2" PIPE WITH A 3" ALUMINUM CAP STAMPED, "PLS 4845", SAID BEARING BEING A GRID BEARING BASED ON A CUSTOM LOW-DISTORTION PROJECTION USING THE NORTH AMERICAN DATUM OF 1983(2011).

LEGEND

- ◆ COMPUTED ALIQUOT CORNER
- ALIQUOT CORNER
- ⊕ BOTTOM HOLE
- ⊙ ALIQUOT WITNESS CORNER
- △ LANDING POINT
- ⊙ PROPOSED WELL
- A.C. ALUMINUM CAP
- R.B. RANGE BOX
- CONC. CONCRETE
- I.C.V.B. IRRIGATION CONTROL VALVE BOX

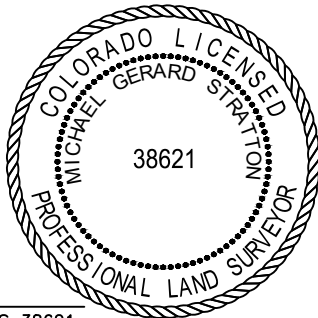


SCALE: 1" = 1000'
INTERNATIONAL FEET



LAND SURVEYOR'S CERTIFICATION

LAMP RYNEARSON, INC. OF FT. COLLINS, COLORADO HAS, IN ACCORDANCE WITH A REQUEST FROM KALEB ROUSH OF CIVITAS RESOURCES, DETERMINED THE SURFACE LOCATION OF THE WELL DESIGNATED AS ORIGAMI STATE A-031 6S-10-03 TO BE 540' FROM THE SOUTH LINE AND 2433' FROM THE EAST LINE OF SECTION 31, TOWNSHIP 5 NORTH, RANGE 62 WEST OF THE 6TH P.M., WELD COUNTY, COLORADO.



MICHAEL GERARD STRATTON COLORADO PLS 38621
DATE OF SURVEY: 11/04/2024 (SECTION CONTROL)
DATE OF SURVEY: 12/12/2024 (WELL LOCATION)

SURFACE POINT			LANDING POINT/BEGIN HORIZONTAL COMPLETION ZONE				BOTTOM HOLE/END HORIZONTAL COMPLETION ZONE				
540'	FSL	2433'	FEL	100'	FNL	2160'	FWL	100'	FSL	2060'	FWL

SURFACE POINT				LANDING POINT		BOTTOM HOLE		
LATITUDE	LONGITUDE	ELEVATION	PDOP	OPERATOR	LATITUDE	LONGITUDE	LATITUDE	LONGITUDE
40.350541	-104.365829	4553	1.590	I.PRUSHNOK	40.348801	-104.369771	40.334564	-104.369407

LAMP RYNEARSON

OMAHA, NEBRASKA
14710 W. DODGE RD, STE. 100 (402)496.2498
FORT COLLINS, COLORADO
4715 INNOVATION DR., STE. 100 (970)223.0342
KANSAS CITY, MISSOURI
9001 STATE LINE RD., STE. 200 (816)351.0440

DESIGNER / DRAFTER
JOSH CROAK
REVIEWER
MICHAEL STRATTON
PROJECT NUMBER
0224029
DATE
12/18/2024
SURFACE LOCATION
SW4 SE4 SEC 31 T5N R62W
BOOK AND PAGE

WELL LOCATION PLAT
CIVITAS RESOURCES
ORIGAMI STATE A-031 6S-10-03

