

Inspection/Audit Photos

Location: QB ENERGY KNOX-68S96W/11NWNW (OD11 Pad)

Location ID: 334064

Date: 02/19/2025



Photo # 5320 Entrance to location

Photo # 5370 Location

Inspection/Audit Photos

Location: QB ENERGY KNOX-68S96W/11NWNW (OD11 Pad)

Location ID: 334064

Date: 02/19/2025



Photo # 5321 Location



Photo # 5336 Location

Inspection/Audit Photos

Location: QB ENERGY KNOX-68S96W/11NWNW (OD11 Pad)

Location ID: 334064

Date: 02/19/2025



Photo # 5338 Location



Photo # 5369 Location

Inspection/Audit Photos

Location: QB ENERGY KNOX-68S96W/11NWNW (OD11 Pad)

Location ID: 334064

Date: 02/19/2025



Photo # 5390 SE corner of location



Photo # 5391 SW corner of location

Inspection/Audit Photos

Location: QB ENERGY KNOX-68S96W/11NWNW (OD11 Pad)

Location ID: 334064

Date: 02/19/2025



Photo # 5392 NW corner of location



Photo # 5393 NE corner of location

Inspection/Audit Photos

Location: QB ENERGY KNOX-68S96W/11NWNW (OD11 Pad)

Location ID: 334064

Date: 02/19/2025



Photo # 5331 Open hole with no wildlife egress/wildlife hazard



Photo # 5333 Open hole with no wildlife egress/wildlife hazard

Inspection/Audit Photos

Location: QB ENERGY KNOX-68S96W/11NWNW (OD11 Pad)

Location ID: 334064

Date: 02/19/2025

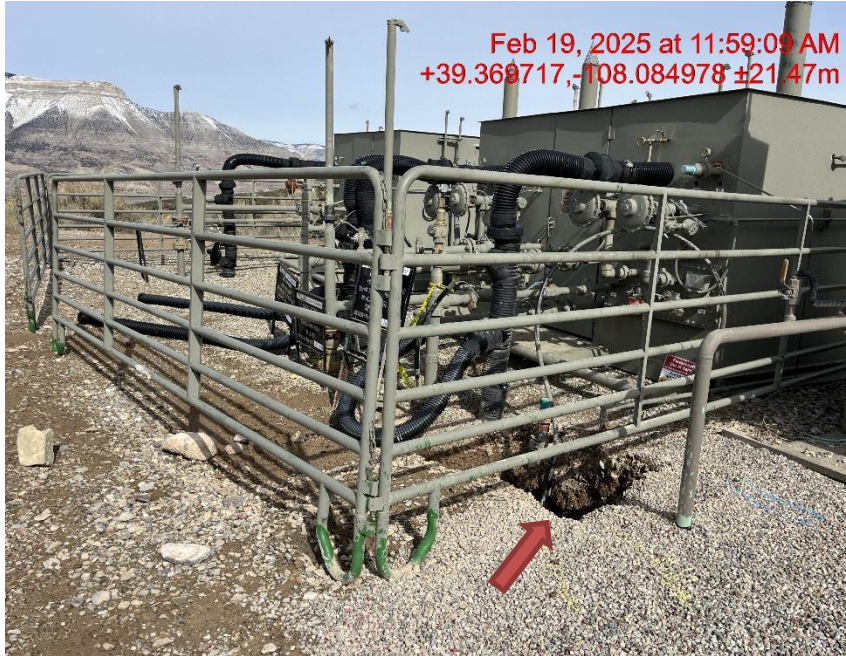


Photo # 5343 Open hole with no wildlife egress/wildlife hazard



Photo # 5345 Open hole with no wildlife egress/wildlife hazard

Inspection/Audit Photos

Location: QB ENERGY KNOX-68S96W/11NWNW (OD11 Pad)

Location ID: 334064

Date: 02/19/2025



Photo # 5349 Open hole with no wildlife egress/wildlife hazard

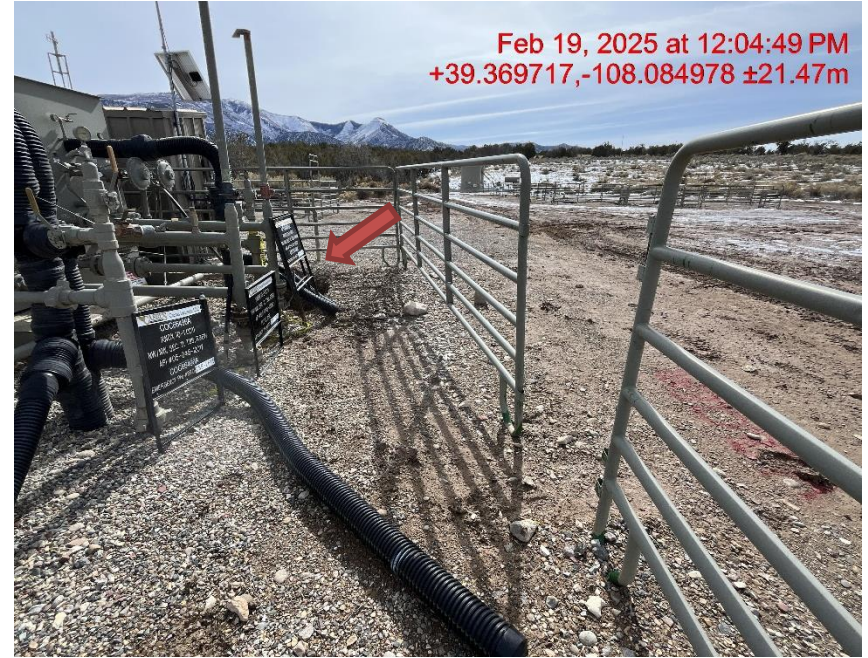


Photo # 5352 Open hole with no wildlife egress/wildlife hazard/open fence

Inspection/Audit Photos

Location: QB ENERGY KNOX-68S96W/11NWNW (OD11 Pad)

Location ID: 334064

Date: 02/19/2025



Photo # 5363 PRV vent line & rupture disc vent line does not comply with CECMC pressure safety device rules



Photo # 5380 Holes in secondary containment liner/liner needs maintenance

Inspection/Audit Photos

Location: QB ENERGY KNOX-68S96W/11NWNW (OD11 Pad)

Location ID: 334064

Date: 02/19/2025



Photo # 5382 Holes in secondary containment liner/liner needs maintenance



Photo # 5385 Holes in secondary containment liner/liner needs maintenance

Inspection/Audit Photos

Location: QB ENERGY KNOX-68S96W/11NWNW (OD11 Pad)

Location ID: 334064

Date: 02/19/2025



Photo # 5389 Holes in secondary containment liner/liner needs maintenance



Photo # 5394 Lack of stabilization/compaction on location/insufficient tracking BMP's

Inspection/Audit Photos

Location: QB ENERGY KNOX-68S96W/11NWNW (OD11 Pad)

Location ID: 334064

Date: 02/19/2025



Photo # 5399 Lack of stabilization/compaction on location/insufficient tracking BMP's



Photo # 5408 Lack of stabilization/compaction on location/insufficient tracking BMP's

Inspection/Audit Photos

Location: QB ENERGY KNOX-68S96W/11NWNW (OD11 Pad)

Location ID: 334064

Date: 02/19/2025



Photo # 5411 Lack of stabilization/compaction on location/insufficient tracking BMP's



Photo # 5417 Tracking onto lease road/Insufficient tracking BMP's

Inspection/Audit Photos

Location: QB ENERGY KNOX-68S96W/11NWNW (OD11 Pad)

Location ID: 334064

Date: 02/19/2025



Photo # 5419 Tracking onto lease road/Insufficient tracking BMP's

Photo # 5412 Dead Deer on west side of location

Inspection/Audit Photos

Location: QB ENERGY KNOX-68S96W/11NWNW (OD11 Pad)

Location ID: 334064

Date: 02/19/2025



Photo # 5326 Debris



Photo # 5327 Debris