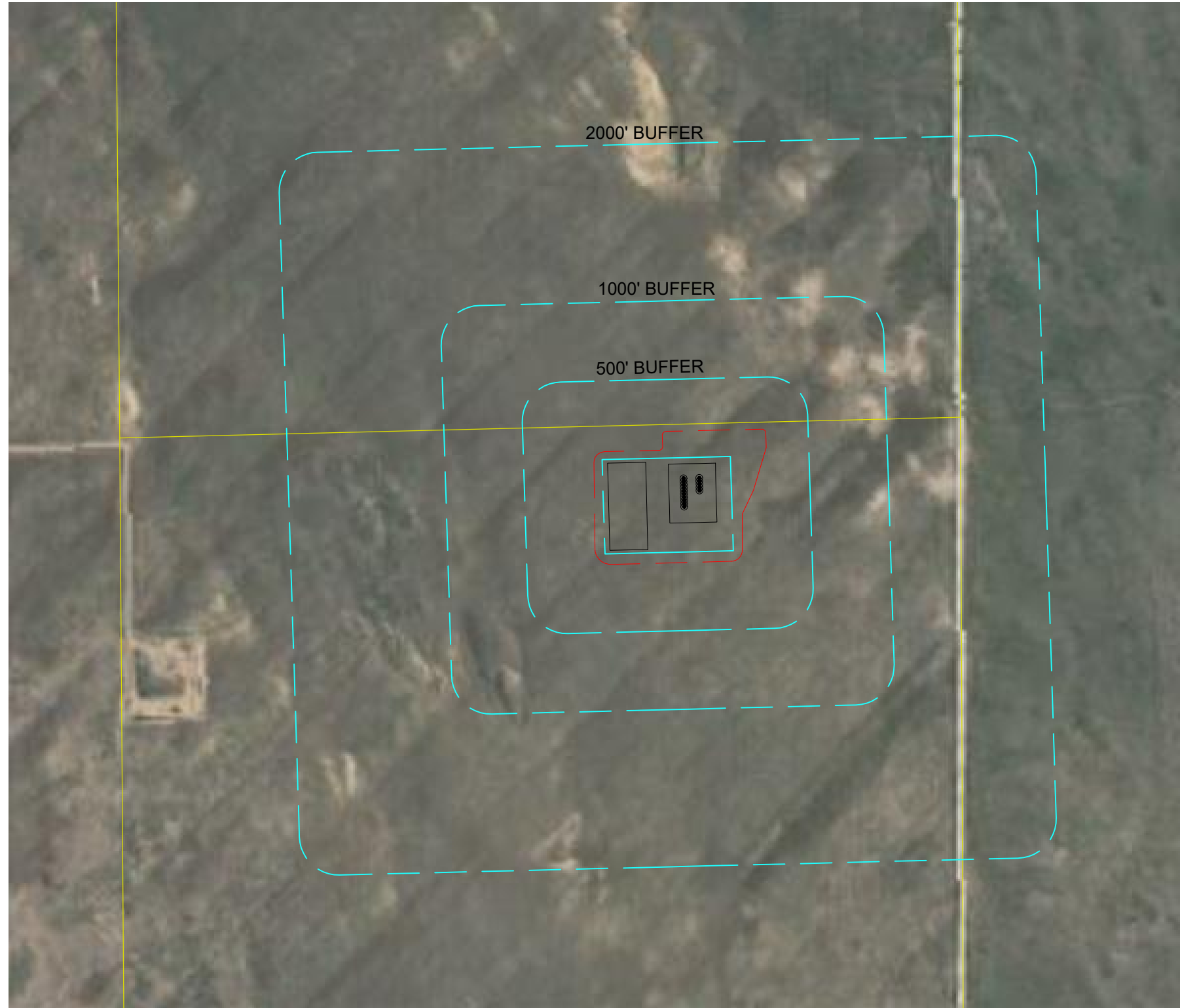


CULTURAL ITEMS MAP  
 CARTWRIGHT 24 PAD  
 BISON IV OPERATING, LLC



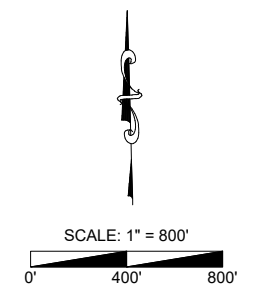
**LEGEND**

	PARCEL LINE
	WORKING PAD SURFACE
	OIL AND GAS LOCATION
	PROPOSED WELL

**NOTE:**  
 VISIBLE IMPROVEMENTS SHOWN AND LISTED HEREON MAY HAVE BEEN OBTAINED FROM THE AERIAL PHOTO AND OTHER PUBLICLY AVAILABLE DATA. THE ACCURACY OF ANY AND ALL DATA HAS NOT BEEN VERIFIED BY AVERY LAND SERVICES, LLC. EXISTING CONDITIONS MAY DIFFER FROM WHAT IS DEPICTED HEREON.

	MEASURED FROM THE NEAREST	PROPOSED WELL HEAD	EDGE OF WORKING PAD
B	BUILDING	5280'+ NE	5280'+ NE
BU	BUILDING UNIT	5280'+ NE	5280'+ NE
RB	RESIDENTIAL BUILDING	5280'+ NE	5280'+ NE
HOBUS	HIGH OCCUPANCY BUILDING UNIT	5280'+ SE	5280'+ SE
S	SCHOOL FACILITY	5280'+ W	5280'+ W
DOAA	DESIGNATED OUTSIDE ACTIVITY AREA	5280'+ SE	5280'+ SE
DIC	DISPROPORTIONATELY IMPACTED COMMUNITY BOUNDARY	5280'+ SE	5280'+ SE
DIC/BU/ RBU/ HOBUS/ S	BUILDING UNIT/RESIDENTIAL BUILDING UNIT/HIGH OCCUPANCY BUILDING UNIT/SCHOOL FACILITY WITHIN DISPROPORTIONATELY IMPACTED COMMUNITY BOUNDARY	5280'+ SE	5280'+ SE
CC	CHILD CARE CENTER	5280'+ W	5280'+ W
PR	PUBLIC ROAD (CR 93)	5280'+ W	5280'+ W
AGU	ABOVE GROUND UTILITY (OVERHEAD POWER)	5280'+ W	5280'+ W
RR	RAILROAD	5280'+ W	5280'+ W
PL	PROPERTY LINE	±432' N	±154' N

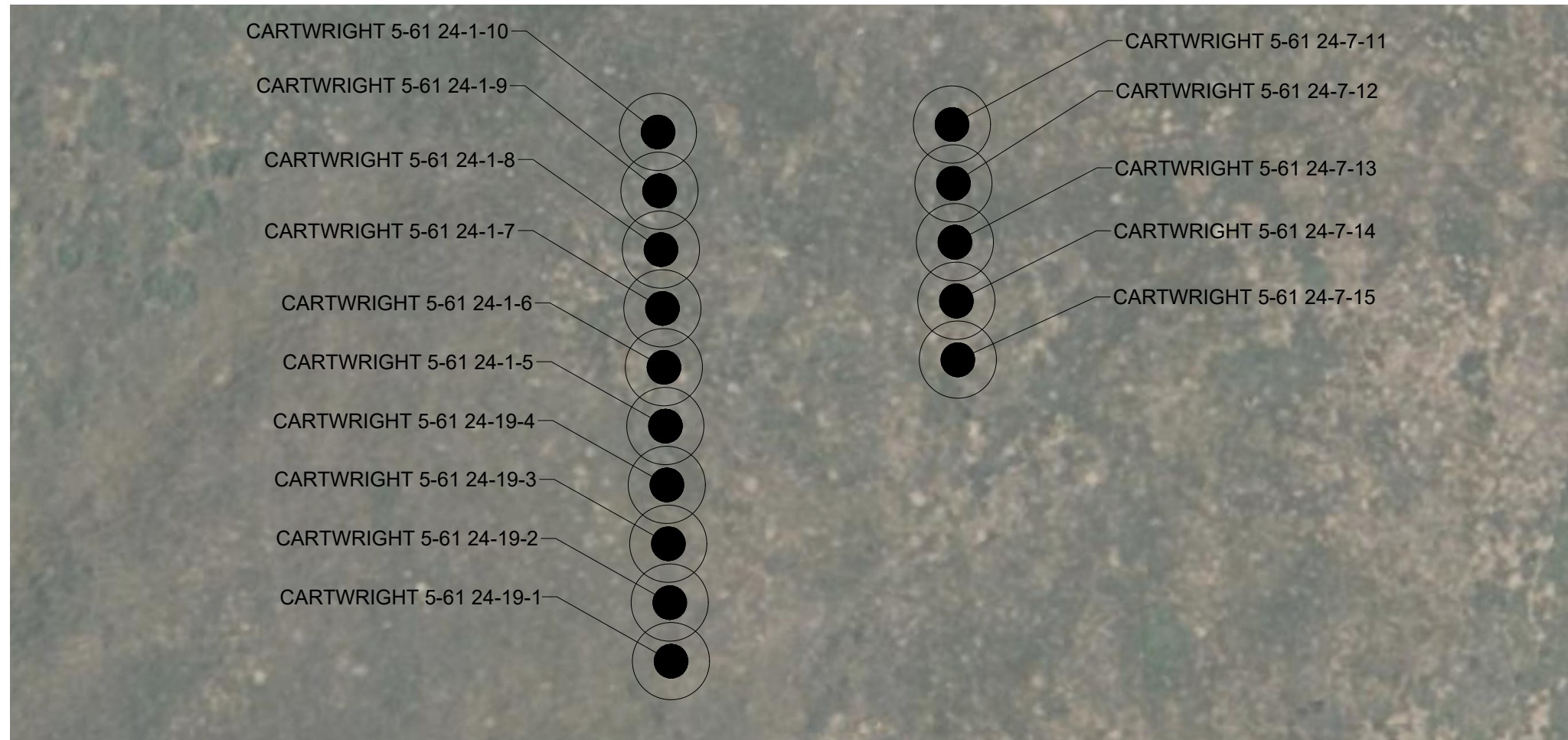
WORKING PAD RADII	0-500 FEET	501-1000 FEET	1001-2000 FEET
BUILDING	0	0	0
BUILDING UNIT	0	0	0
RESIDENTIAL BUILDING	0	0	0
HIGH OCCUPANCY BUILDING UNIT	0	0	0
SCHOOL PROPERTIES	0	0	0
SCHOOL FACILITY	0	0	0
DESIGNATED OUTDOOR ACTIVITY AREA	0	0	0



CULTURAL ITEMS MAP  
 CARTWRIGHT 24 PAD  
 LOCATION DESCRIPTION:  
 NW 1/4 OF NE 1/4 OF  
 SECTION 24 T-5-N, R-61-W, 6th P.M.  
 WELD COUNTY, COLORADO

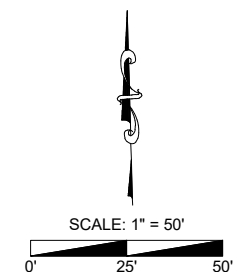
Revision	1	Date	8/29/24	Description	UPDATED WELL FORMAT
Field Date:	07/10/24				
Drawing Date:	8/29/24				
Drawn By:	KRB				
Sheet Number:	1 OF 2				

CULTURAL ITEMS MAP  
 CARTWRIGHT 24 PAD  
 BISON IV OPERATING, LLC



MEASURED FROM NEAREST	CARTWRIGHT 5-61 24-1-10	CARTWRIGHT 5-61 24-1-9	CARTWRIGHT 5-61 24-1-8	CARTWRIGHT 5-61 24-1-7	CARTWRIGHT 5-61 24-1-6	CARTWRIGHT 5-61 24-1-5	CARTWRIGHT 5-61 24-19-4	CARTWRIGHT 5-61 24-19-3	CARTWRIGHT 5-61 24-19-2	CARTWRIGHT 5-61 24-19-1
RESIDENTIAL BUILDING	5280'+ NE	5280'+ NE	5280'+ NE	5280'+ NE	5280'+ NE	5280'+ NE	5280'+ NE	5280'+ NE	5280'+ NE	5280'+ NE
BUILDING	5280'+ NE	5280'+ NE	5280'+ NE	5280'+ NE	5280'+ NE	5280'+ NE	2496' NE	5280'+ NE	5280'+ NE	5280'+ NE
BUILDING UNIT	5280'+ NE	5280'+ NE	5280'+ NE	5280'+ NE	5280'+ NE	5280'+ NE	5280'+ NE	5280'+ NE	5280'+ NE	5280'+ NE
PUBLIC ROAD (CR 93)	5280'+ W	5280'+ W	5280'+ W	5280'+ W	5280'+ W	5280'+ W	5280'+ W	5280'+ W	5280'+ W	5280'+ W
ABOVE GROUND UTILITY	5280'+ W	5280'+ W	5280'+ W	5280'+ W	5280'+ W	5280'+ W	5280'+ W	5280'+ W	5280'+ W	5280'+ W
RAILROAD	5280'+ W	5280'+ W	5280'+ W	5280'+ W	5280'+ W	5280'+ W	5280'+ W	5280'+ W	5280'+ W	5280'+ W
PROPERTY LINE	345' N	365' N	385' N	405' N	425' N	445' N	465' N	485' N	505' N	525' N


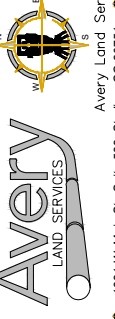
MEASURED FROM NEAREST	CARTWRIGHT 5-61 24-7-11	CARTWRIGHT 5-61 24-7-12	CARTWRIGHT 5-61 24-7-13	CARTWRIGHT 5-61 24-7-14	CARTWRIGHT 5-61 24-7-15
RESIDENTIAL BUILDING	5280'+ NE	5280'+ NE	5280'+ NE	5280'+ NE	5280'+ NE
BUILDING	5280'+ NE	5280'+ NE	5280'+ NE	2435' NE	5280'+ NE
BUILDING UNIT	5280'+ NE	5280'+ NE	5280'+ NE	5280'+ NE	5280'+ NE
PUBLIC ROAD (CR 93)	5280'+ W	5280'+ W	5280'+ W	5280'+ W	5280'+ W
ABOVE GROUND UTILITY	5280'+ W	5280'+ W	5280'+ W	5280'+ W	5280'+ W
RAILROAD	5280'+ S	5280'+ S	5280'+ S	5280'+ S	5280'+ S
PROPERTY LINE	345' N	365' N	385' N	405' N	425' N



CULTURAL ITEMS MAP

CARTWRIGHT 24 PAD

LOCATION DESCRIPTION:  
 NW 1/4 OF NE 1/4 OF  
 SECTION 24 T-5-N, R-61-W, 6th P.M.  
 WELD COUNTY, COLORADO

Avery Land Services  
 1321 W. Main St., Suite 522, Sterling, CO 80751

Description:  
 UPDATED WELL FORMAT

Date:  
 8/29/24

Revision:  
 1

Field Date:  
 07/10/24

Drawing Date:  
 8/29/24

Drawn By:  
 KRB

Sheet Number:  
 2 OF 2