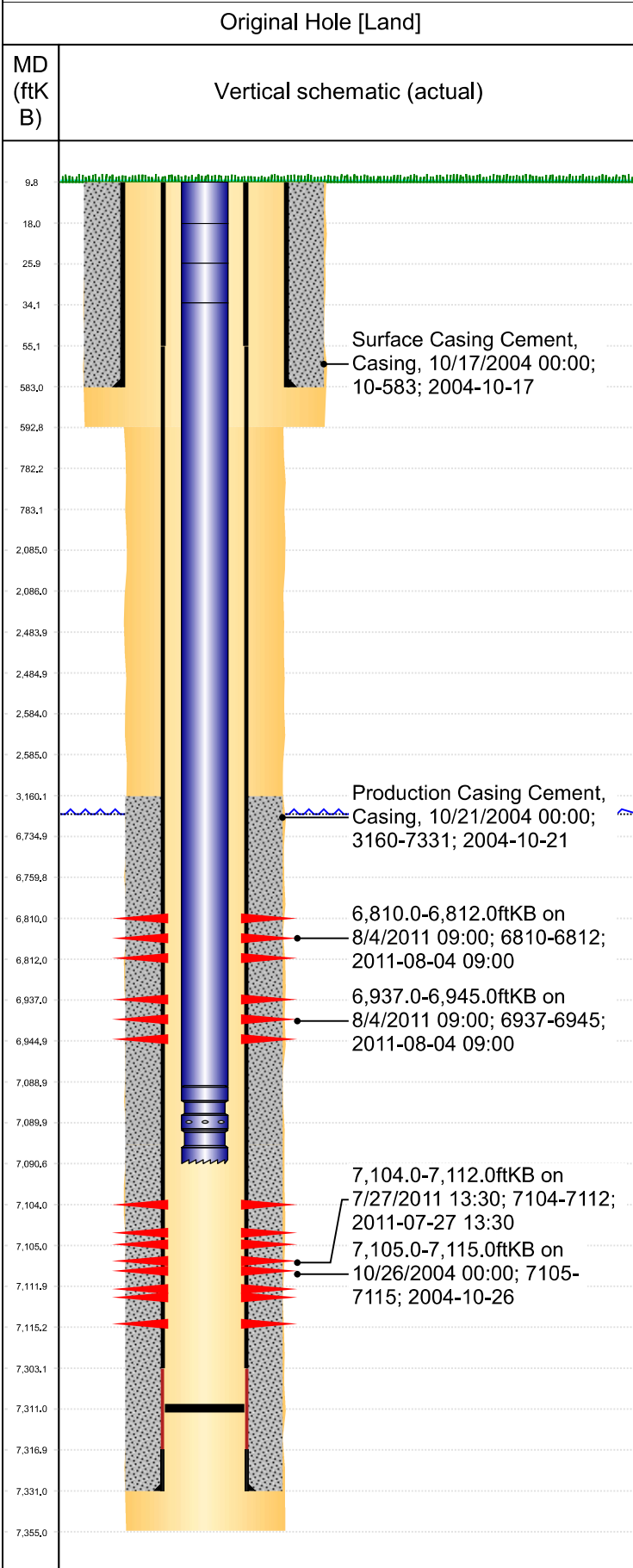




PA Wellbore For State - Vertical

Well Name: Lawley 32-4



Well Header									
Surface UWI 0512322423		Business Unit Rockies		Gov Auth Dist Evans		Prod Tree Loc Land			
Orig. KB to Gnd (ft) 10.00		Original Spud Date 10/16/2004		Abandon Date		Well Sub-Status PR		High...	
Comment									
Geologic Horizons									
Formation Name								Final Top MD (ftKB)	
Surface Location (Congressional)									
Qtr 3 SW	Qtr 4 NE	Section 4	Twonshp 6	Twonsh... N	Range 64	Rng E/... W	Latitude (°) 40.51769	Longitude (°) -104.55344	
Wellbore Sections									
Section Des		Hole Size (in)		Top Depth (ftKB)		Btm Depth (ftKB)			
Surface		12 1/4		10.0		593.0			
Production		7 7/8		593.0		7,355.0			
Casing Strings									
Csg Des		Run Date		OD (in)		Wt/Len (lb/ft)		Grade	
Surface		10/17/2004		8 5/8		24.00		J-55	
Production		10/21/2004		4 1/2		10.50		M-65	
Top Depth (MD) (ftKB)		Set Depth (MD) (ftKB)							
10		583							
10		7331							
Cement									
Des				Start Date		Top (ftKB)		Btm (ftKB)	
				10/17/2004		10.0		583.0	
				10/21/2004		3,160.0		7,331.0	
Stim/Frac Summary									
Min Top Depth (ftKB)					Max Btm Depth (ftKB)				
Min Top Depth (ftKB)					Max Btm Depth (ftKB)				
Perforations									
Linked Zone		Date		Top Depth (ftKB)		Bottom Depth (ftKB)			
Niobrara_A, Original Hole		8/4/2011 09:00		6,810.0		6,812.0			
Niobrara_B, Original Hole		8/4/2011 09:00		6,937.0		6,945.0			
Codell, Original Hole		7/27/2011 13:30		7,104.0		7,112.0			
Codell, Original Hole		10/26/2004 00:00		7,105.0		7,115.0			
Other In Hole									
Run Date		Des		Make		OD (in)		Btm (ftKB)	
Logs									
Date		Type				Depth Top (MD) (ftKB)		Btm (ftKB)	
Wellbore Plug Back Total Depths									
Date		Type		Com				PBTD (ftKB)	
10/21/2004								7,317	
7/11/2011								7,311	