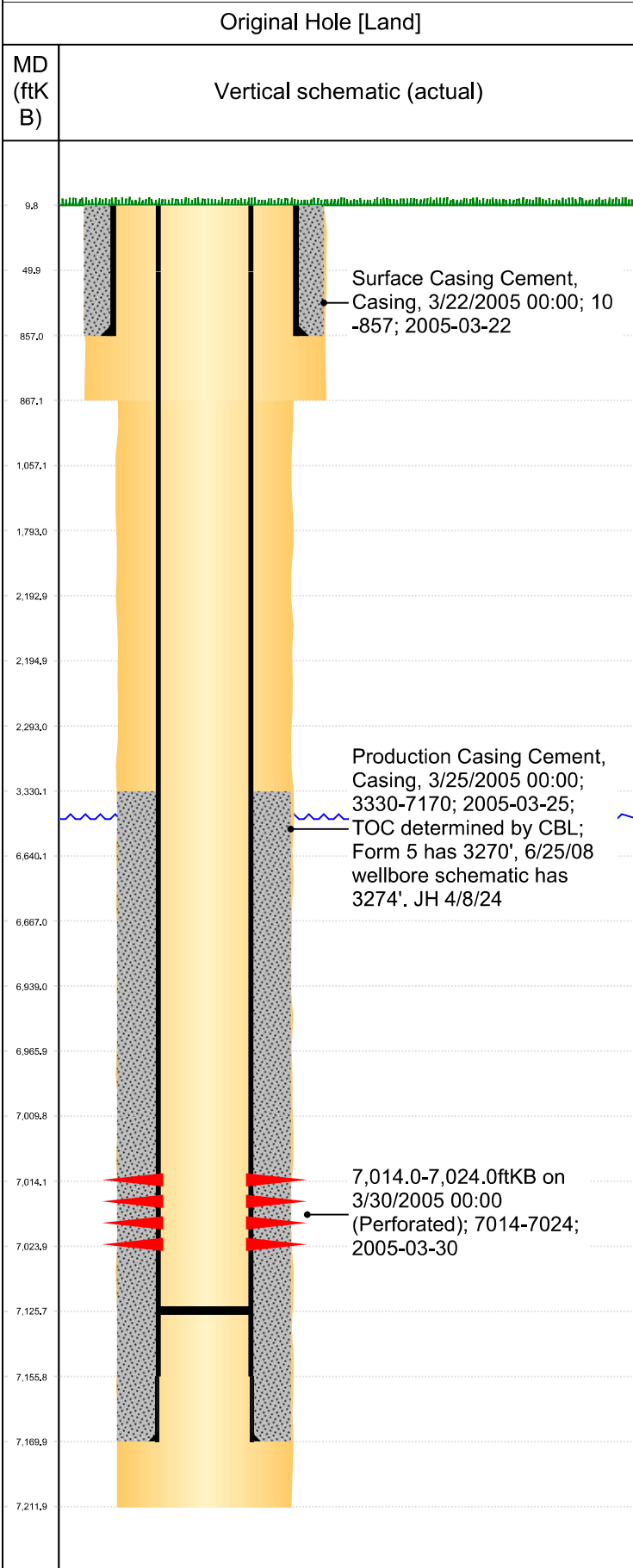




PA Wellbore For State - Vertical

Well Name: Cecil 31-2



Well Header									
Surface UWI 0512322710		Business Unit Rockies		Gov Auth Dist Evans		Prod Tree Loc Land			
Orig. KB to Gnd (ft) 10.00		Original Spud Date 3/21/2005		Abandon Date		Well Sub-Status PR		High...	
								N	
Comment 1/29/15 Workover job- RIH w/ 2" JDC and set 2 stage @ 4198, dropped TWNG and same plunger off bottom. 12/6/22 Form 5B states PDC shut in this well for offset development. How is it shut in??? JH 4/8/24									
Geologic Horizons									
Formation Name								Final Top MD (ftKB)	
Surface Location (Congressional)									
Qtr 3	Qtr 4	Section	Twonshp	Twonsh...	Range	Rng E/...	Latitude (°)	Longitude (°)	
	NE	2	6	N	64	W	40.52075	-104.51417	
Wellbore Sections									
Section Des		Hole Size (in)		Top Depth (ftKB)		Btm Depth (ftKB)			
Surface		11		10.0		867.0			
Production		7 7/8		867.0		7,212.0			
Casing Strings									
Csg Des		Run Date		OD (in)	Wt/Len (lb/ft)	Grade	Top Depth (MD) (ftKB)	Set Depth (MD) (ftKB)	
Surface		3/22/2005		8 5/8	24.00	J-55	10	857	
Production		3/25/2005		4 1/2	10.50	M-65	10	7170	
Cement									
Des				Start Date		Top (ftKB)		Btm (ftKB)	
Surface Casing Cement				3/22/2005		10.0		857.0	
Production Casing Cement				3/25/2005		3,330.0		7,170.0	
Stim/Frac Summary									
Min Top Depth (ftKB)					Max Btm Depth (ftKB)				
Perforations									
Linked Zone			Date		Top Depth (ftKB)		Bottom Depth (ftKB)		
Codell, Original Hole			3/30/2005 00:00		7,014.0		7,024.0		
Other In Hole									
Run Date		Des		Make		OD (in)	Top (ftKB)	Btm (ftKB)	
Logs									
Date		Type				Depth Top (MD) (ftKB)		Btm (ftKB)	
3/25/2005		Compensated Density				800		7,205.0	
3/30/2005		CBL/CCL/GR				3,144		7,126.0	
Wellbore Plug Back Total Depths									
Date		Type		Com				PBTB (ftKB)	
3/25/2005		Fill		PBTB @ 7155.98'. Circulated hole for 35 minutes.				7,156	
11/18/2014		Tag		Daily ops notes: Tagged @ 7125.5', 101.5' rat hole below CD, JH...				7,126	