

Final Reclamation and Stormwater Inspection

Date: 02/19/2025

Operator: PDC ENERGY INC - 69175

Location ID: 330939

Inspection Document #: 718700126

Weld County, CO



COLORADO
Energy & Carbon Management
Commission
Department of Natural Resources

Inspection Photos
Location Name: J&L Farms 23-22
Location ID: 330939

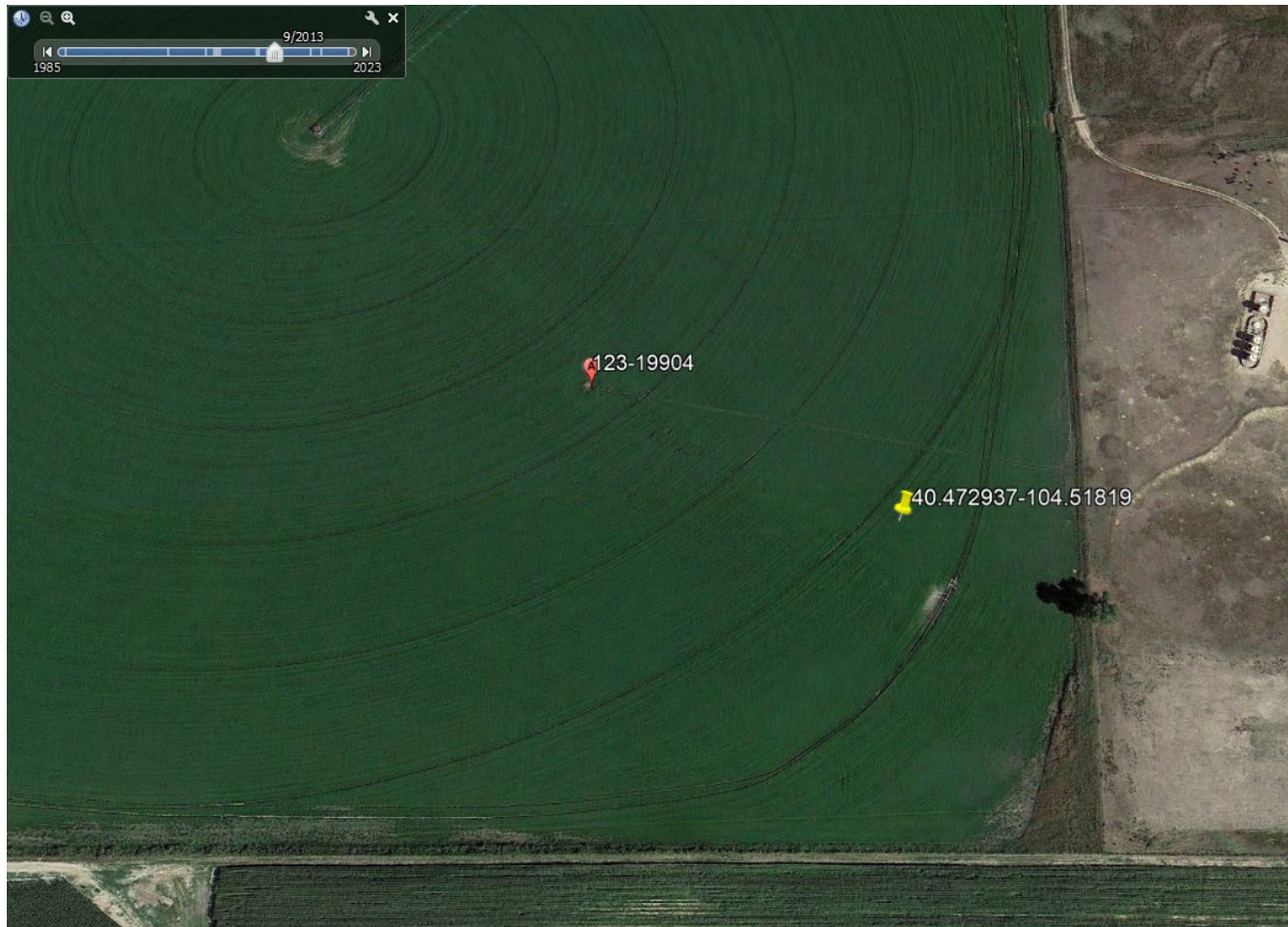


Photo 1. Google Earth aerial imagery (circa 09/2013) during active oil and gas operations. Photo illustrates uniform vegetation cover adjacent to the well location. (Lat/Long southeast of well location is from Operator supplied drone aerial imagery; Photo 3).

Inspection Photos
Location Name: J&L Farms 23-22
Location ID: 330939



Photo 2. Google Earth aerial imagery (circa 09/2018), approximately 6 months after P&A activities (03/06/2018), illustrating a disturbance around the former well location. (Lat/Long southeast of well location is from Operator supplied drone aerial imagery; Photo 3).



Figure 6: Looking West towards well and reference area, 100 feet in height, Lat/Long: 40.472937/-104.51819.

10

Photo 3. Screenshot taken from Page 10 of the drone closure report. Image illustrates that the former well location and disturbance areas (as seen in Photo 2) do not appear to be reflective of the adjacent reference areas (not the red outline in image).