

# Carl A Miller Sub Battery - Facility #475653 Photos

February 19, 2025



Sign/ Tank Battery



Wells associated with the Tank Battery



Location



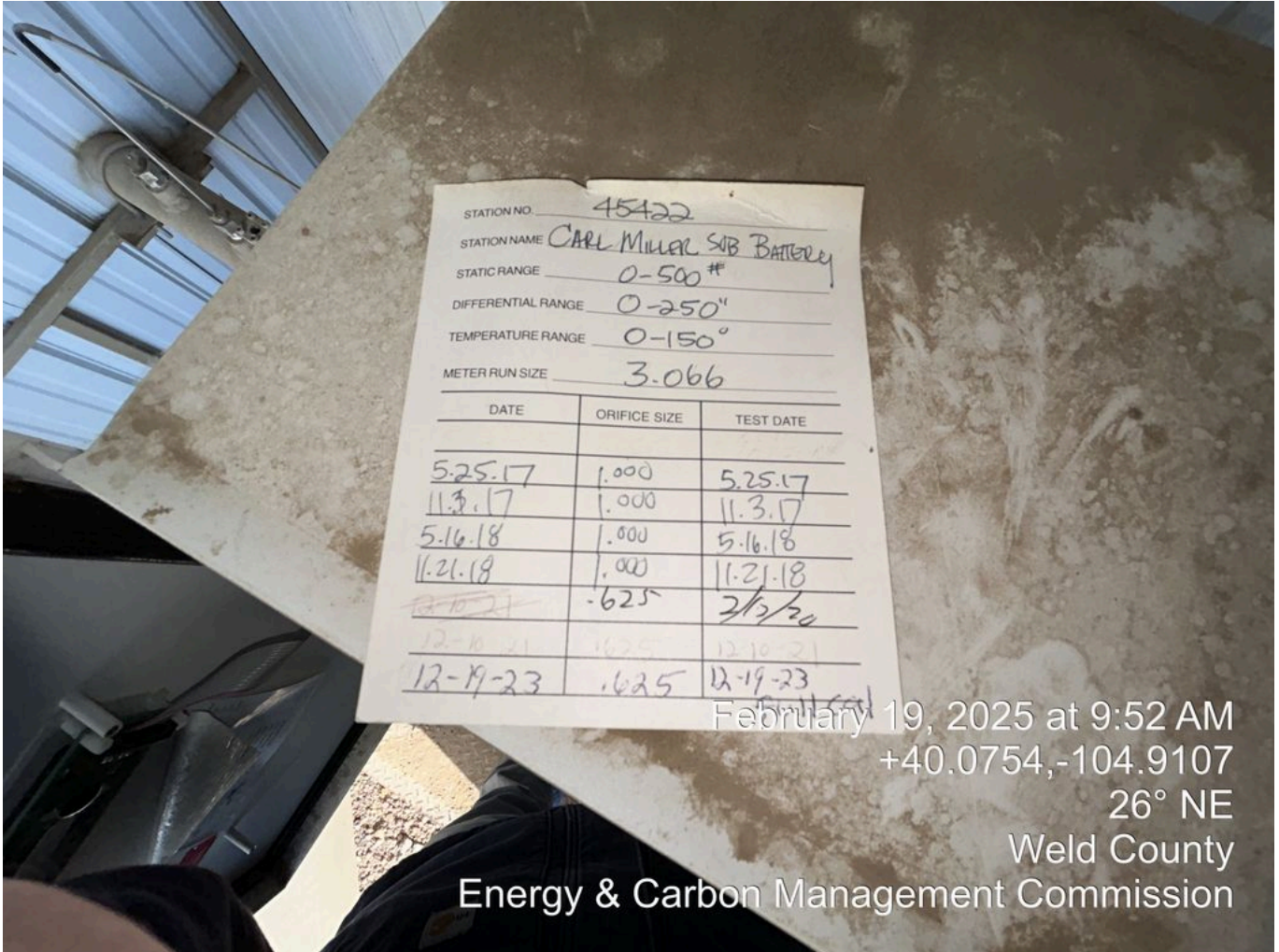
*Production Equipment*



*Ground Flow-line valve at separator appears open*



*Top Side Flow-line valve at separator appears open*

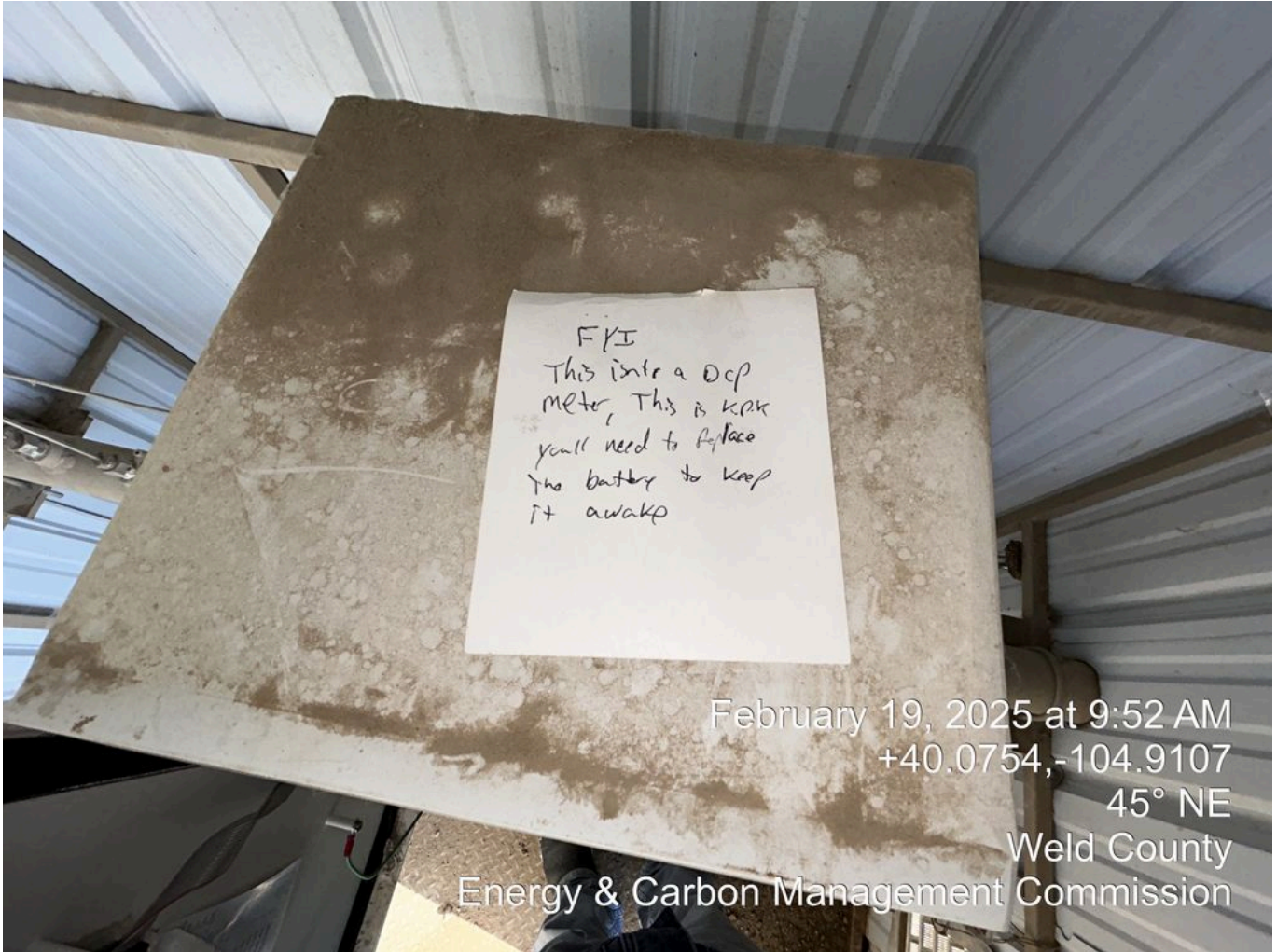


STATION NO. 45422  
STATION NAME CARL MILLER SUB BATTERY  
STATIC RANGE 0-500 #  
DIFFERENTIAL RANGE 0-250"  
TEMPERATURE RANGE 0-150°  
METER RUN SIZE 3.066

DATE	ORIFICE SIZE	TEST DATE
5-25-17	1.000	5-25-17
11-3-17	1.000	11-3-17
5-16-18	1.000	5-16-18
11-21-18	1.000	11-21-18
<del>12-10-21</del>	<del>.625</del>	<del>12-10-21</del>
12-10-21	.625	12-10-21
12-19-23	.625	12-19-23

February 19, 2025 at 9:52 AM  
+40.0754,-104.9107  
26° NE  
Weld County  
Energy & Carbon Management Commission

Gas Meter Calibration Card



Back Side of Gas Meter Calibration Card



Gas Meter "Showing Flow Rate"



February 19, 2025 at 9:53 AM  
+40.0754,-104.9107  
25° NE  
Weld County  
Energy & Carbon Management Commission

Gas Meter Showing 2-18-25 Flow Volume



Gas Meter Run Showing 2-18-25 Flow-Time

