

TABLE 1
SUMMARY OF VOLATILE ORGANIC SOIL CHEMISTRY DATA
PDC 69175
KREPS #1, WELD COUNTY, COLORADO
REM #

Sample ID	Sample Date	Depth (ft)	Benzene (mg/kg)	Toluene (mg/kg)	Ethyl-Benzene (mg/kg)	Xylenes (mg/kg)	1,2,4-Trimethyl-Benzene (mg/kg)	1,3,5-Trimethyl-Benzene (mg/kg)	Naphthalene (mg/kg)	TPH (mg/kg)	TPH GRO (mg/kg)	TPH DRO (mg/kg)	TPH ORO (mg/kg)
ECMC Table 915-1 Limits (Residential SSL)			1.2	490	5.8	58	30	27	2	500	500**		
ECMC Table 915-1 Limits (Protection of Groundwater SSL)			0.0026	0.69	0.78	9.9	0.0081	0.0087	0.0038	500	500**		
Waste Char	11/1/2024	5	<0.0020	<0.0050	4.1	1.5	33	5.6	2.2	1750	1100	520	130
SS-B2 8 Ft	11/14/2024	8	<0.0020	<0.0050	<0.0050	<0.010	<0.0050	<0.0050	<0.0038	<100.50	<0.50	<50	<50
SS-E2 7 Ft	11/14/2024	7	<0.0020	<0.0050	<0.0050	<0.010	<0.0050	<0.0050	<0.0038	<100.50	<0.50	<50	<50
SS-W2 7 Ft	11/14/2024	7	<0.0020	<0.0050	<0.0050	<0.010	<0.0050	<0.0050	<0.0038	<100.50	<0.50	<50	<50
SS-S1 7 Ft	11/14/2024	7	<0.0020	<0.0050	<0.0050	<0.010	<0.0050	<0.0050	<0.0038	<100.50	<0.50	<50	<50
Waste Char	11/14/2024	7	<0.0020	<0.0050	0.097	0.017	0.16	0.028	<0.0038	13	13	<50	<50
SS-W1 7 Ft	11/14/2024	7	<0.0020	<0.0050	<0.0050	<0.010	<0.0050	<0.0050	<0.0038	<100.50	<0.50	<50	<50

1. Bold values exceed the ECMC Table 915-1 limit(s)
2. Red & blue highlighted soil analytical values indicate an exceedance of the referenced soil screening level (SSL)
3. * Indicates laboratory minimum detection limit in excess of SSL
4. ** Summation of GRO+DRO+ORO must be less than 500 mg/kg

NA - Not analyzed

= Source material characterization sample, excavated and transported off site for disposal.
 = Material excavated and transported off site for disposal.

TABLE 2
SUMMARY OF POLYCYCLIC AROMATIC HYDROCARBON SOIL CHEMISTRY DATA
PDC 69175
KREPS 1, WELD COUNTY, COLORADO
REM #

Sample ID	Sample Date	Depth (ft)	Acenaphthene (mg/kg)	Anthracene (mg/kg)	Benzo (a) Anthracene (mg/kg)	Benzo (a) Pyrene (mg/kg)	Benzo (b) Fluoranthene (mg/kg)	Benzo (k) Fluoranthene (mg/kg)	Chrysene (mg/kg)	Dibenzo (a,h) Anthracene (mg/kg)	Fluoranthene (mg/kg)	Fluorene (mg/kg)	Indeno (1,2,3-cd) Pyrene (mg/kg)	Pyrene (mg/kg)	1-Methyl - Naphthalene (mg/kg)	2-Methyl- Naphthalene (mg/kg)
ECMC Table 915-1 Limits (Residential SSL)			360	1800	1.1	0.11	1.1	11	110	0.11	240	240	1.1	180	18	24
ECMC Table 915-1 Limits (Protection of Groundwater SSL)			0.55	5.8	0.011	0.24	0.3	2.9	9	0.096	8.9	0.54	0.98	1.3	0.006	0.019
Waste Char	11/1/2024	5	<0.00500	<0.00500	0.0514	<0.00500	<0.00500	<0.00500	<0.00500	<0.00500	<0.00500	0.380	<0.00500	<0.00500	2.03	3.28
SS-B2 8 Ft	11/14/2024	8	<0.00500	<0.00500	<0.00500	<0.00500	<0.00500	<0.00500	<0.00500	<0.00500	<0.00500	<0.00500	<0.00500	<0.00500	<0.00500	<0.00500
SS-E2 7 Ft	11/14/2024	7	<0.00500	<0.00500	<0.00500	<0.00500	<0.00500	<0.00500	<0.00500	<0.00500	<0.00500	<0.00500	<0.00500	<0.00500	<0.00500	<0.00500
SS-W2 7 Ft	11/14/2024	7	<0.00500	<0.00500	<0.00500	<0.00500	<0.00500	<0.00500	<0.00500	<0.00500	<0.00500	<0.00500	<0.00500	<0.00500	<0.00500	<0.00500
SS-S1 7 Ft	11/14/2024	7	<0.00500	<0.00500	<0.00500	<0.00500	<0.00500	<0.00500	<0.00500	<0.00500	<0.00500	<0.00500	<0.00500	<0.00500	<0.00500	<0.00500
Waste Char	11/14/2024	7	<0.00500	<0.00500	<0.00500	<0.00500	<0.00500	<0.00500	<0.00500	<0.00500	<0.00500	0.00837	<0.00500	<0.00500	0.0202	0.0124
SS-W1 7 Ft	11/14/2024	7	<0.00500	<0.00500	<0.00500	<0.00500	<0.00500	<0.00500	<0.00500	<0.00500	<0.00500	<0.00500	<0.00500	<0.00500	<0.00500	<0.00500

1. Bold values exceed the ECMC Table 915-1 limit(s)
 2. Red & blue highlighted soil analytical values indicate an exceedance of the referenced soil screening level (SSL)
 3. * Indicates laboratory minimum detection limit in excess of SSL
- NA - Not analyzed
- = Source material characterization sample, excavated and transported off site for disposal.
- = Material excavated and transported off site for disposal.

TABLE 3
SUMMARY OF SOIL SUITABILITY FOR RECLAMATION
PDC 69175
KREPS 1, WELD COUNTY, COLORADO
REM #

Sample ID	Sample Date	Depth (ft)	pH (Standard Units)	EC (mmhos/cm)	SAR (Standard Units)	Boron (mg/L)
ECMC Table 915-1 Soil Suitability Limits			6 - 8.3	<4	<6	2
Waste Char	11/1/2024	5	8.81	0.524	3.81	<2.00
SS-B2 8 Ft	11/14/2024	8	8.29	0.964	3.9	<2.00
SS-E2 7 Ft	11/14/2024	7	8.34	0.912	3.76	<2.00
SS-W2 7 Ft	11/14/2024	7	8.20	1.48	5.22	<2.00
SS-S1 7 Ft	11/14/2024	7	8.33	2.46	6.88	<2.00
Waste Char	11/14/2024	7	8.33	1.47	7.32	<2.00
SS-W1 7 Ft	11/14/2024	7	8.42	0.75	3.15	<2.00
Maximum Background Concentration						

1. Bold faced values exceed the ECMC Table 915-1 limit(s)
 2. Blue highlighted soil analytical values indicate a regulatory exceedance
- NA - Not analyzed

= Source material characterization sample, excavated and transported off site for disposal.

= Material excavated and transported off site for disposal.

TABLE 4
SUMMARY OF METALS IN SOIL CHEMISTRY DATA
PDC 69175
KREPS 1, WELD COUNTY, COLORADO
REM # 38153

Sample ID	Sample Date	Depth (ft)	Arsenic (mg/kg)	Barium (mg/kg)	Cadmium (mg/kg)	Chromium (VI) (mg/kg)	Copper (mg/kg)	Lead (mg/kg)	Nickel (mg/kg)	Selenium (mg/kg)	Silver (mg/kg)	Zinc (mg/kg)
ECMC Table 915-1 Limits (Residential SSL)			0.68	15000	71	0.3	3100	400	1500	390	390	23000
ECMC Table 915-1 Limits (Protection of Groundwater SSL)			0.29	82	0.38	0.00067	46	14	26	0.26	0.8	370
Waste Char	11/1/2024	5	0.888	128	0.22	<0.30	7.8	7.69	10.2	<0.260	0.039	8.91
SS-B2 8 Ft	11/14/2024	8	4.01	69.1	0.273	<0.30	4.64	7.12	6.17	<0.260	0.0541	21.9
SS-E2 7 Ft	11/14/2024	7	4.37	111	0.312	<0.30	5.65	7.79	6.74	<0.260	0.0514	23.6
SS-W2 7 Ft	11/14/2024	7	3.59	62.2	0.294	<0.30	4.62	6.85	5.85	0.28	0.0485	19.9
SS-S1 7 Ft	11/14/2024	7	3.10	46.3	0.215	<0.30	3.93	5.61	4.21	<0.260	0.0352	15.6
Waste Char	11/14/2024	7	4.64	88.9	0.287	<0.30	6.66	22.8	5.53	<0.260	0.0366	25.6
SS-W1 7 Ft	11/14/2024	7	3.39	139	0.272	<0.30	4.72	6.46	6.35	<0.260	0.0304	20.3
Maximum Background Concentration												
125% Average Background Concentration												

1. Bold values exceed the ECMC Table 915-1 limit(s)

2. Red & blue highlighted soil analytical values indicate an exceedance of the referenced soil screening level (SSL)

* Indicates laboratory minimum detection limit in excess of SSL

NA - Not analyzed

= Source material characterization sample, excavated and transported off site for disposal.

= Material excavated and transported off site for disposal.

TABLE 5
SUMMARY OF GROUNDWATER ELEVATION DATA AND ORGANIC CHEMISTRY DATA
PDC 69175
KREPS 1, WELD COUNTY, COLORADO
REM #

Sample ID	Sample Date	Benzene (µg/L)	Toluene (µg/L)	Ethyl-Benzene (µg/L)	Xylenes (µg/L)	Naphthalene (µg/L)	1,2,4-Trimethyl-Benzene (µg/L)	1,3,5-Trimethyl-Benzene (µg/L)	TOC Elevation (ft)	Depth to Groundwater Below TOC (ft)	Depth to Groundwater Below Ground Surface (ft)	Groundwater Elevation (ft)	LNAPL Thickness (ft)
ECMC Table 915-1 Limits		5.0	560	700	1400	140	67	67					
GW-1	11/14/24	<1.0	<1.0	<1.0	<2.0	1.4	5.5	1.8	NA	NA	NA	NA	NP

1. Bold values exceed the ECMC limit(s)
 2. Red highlighted groundwater analytical values indicate a regulatory exceedance
- NP - No measurable LNAPL, NA - Not Analyzed, NL - No Limit, INA - Inaccessible, IW - Insufficient Water, DES - Destroyed

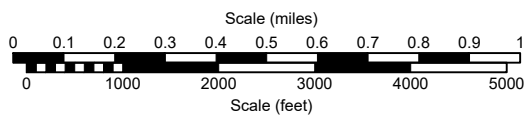
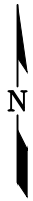
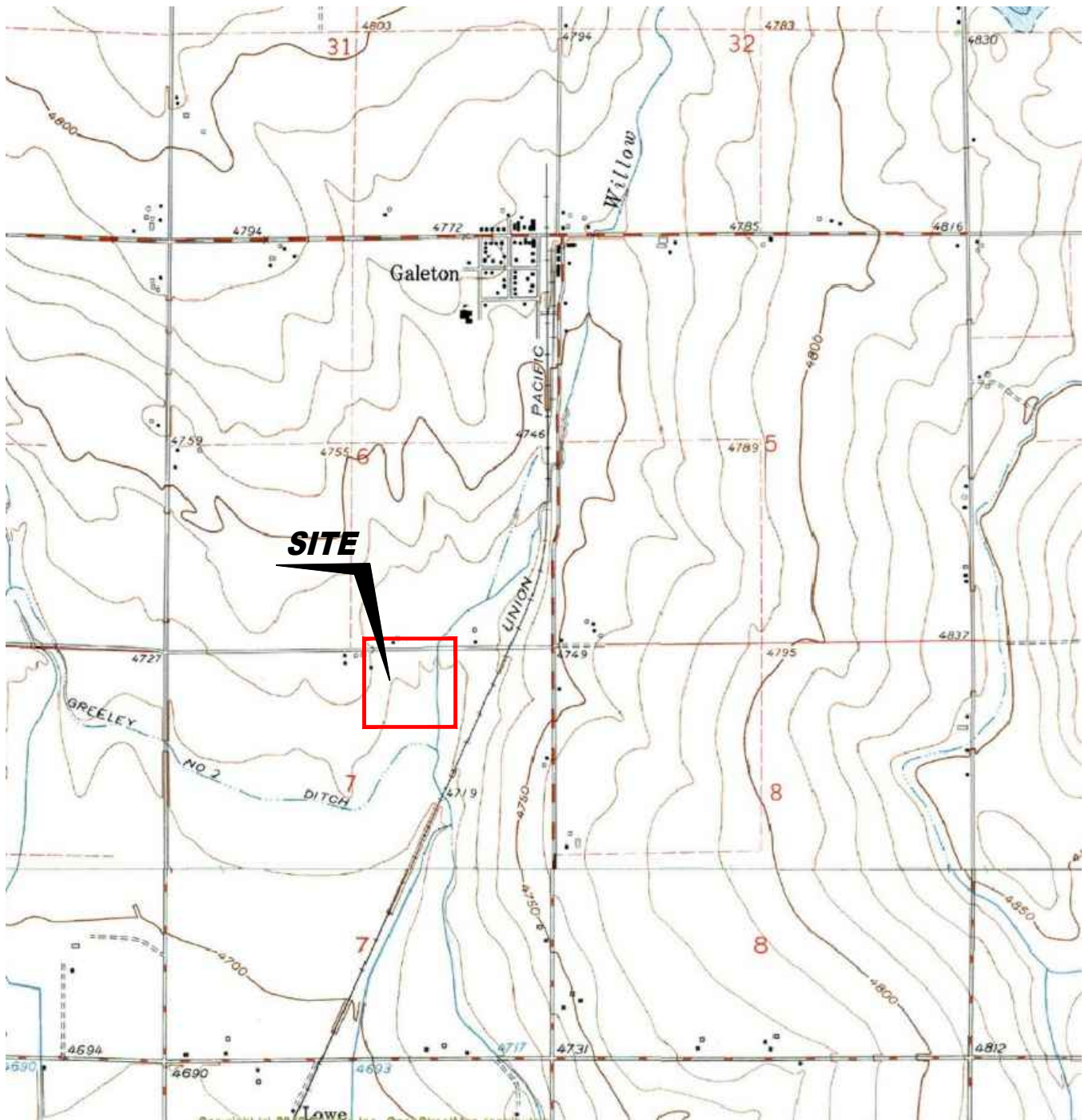
TABLE 6
SUMMARY OF INORGANIC GROUNDWATER CHEMISTRY DATA
PDC 69175
KREPS 1, WELD COUNTY, COLORADO
REM #

Sample ID	Sample Date	Total Dissolved Solids (mg/L)	Chloride Ion (mg/L)	Sulfate Ion (mg/L)
ECMC Table 915-1 Limits		<1.25 x local background	250 or <1.25 x local background	250 or <1.25 x local background
GW-1	11/14/24	2470	122	1310
Background Concentration (Current)				

1. Bold values exceed the ECMC limit(s)

2. Blue highlighted groundwater analytical values indicate a regulatory exceedance

NP - No measurable LNAPL, NA - Not Analyzed, INA - Inaccessible, IW - Insufficient Water, DES - Destroyed



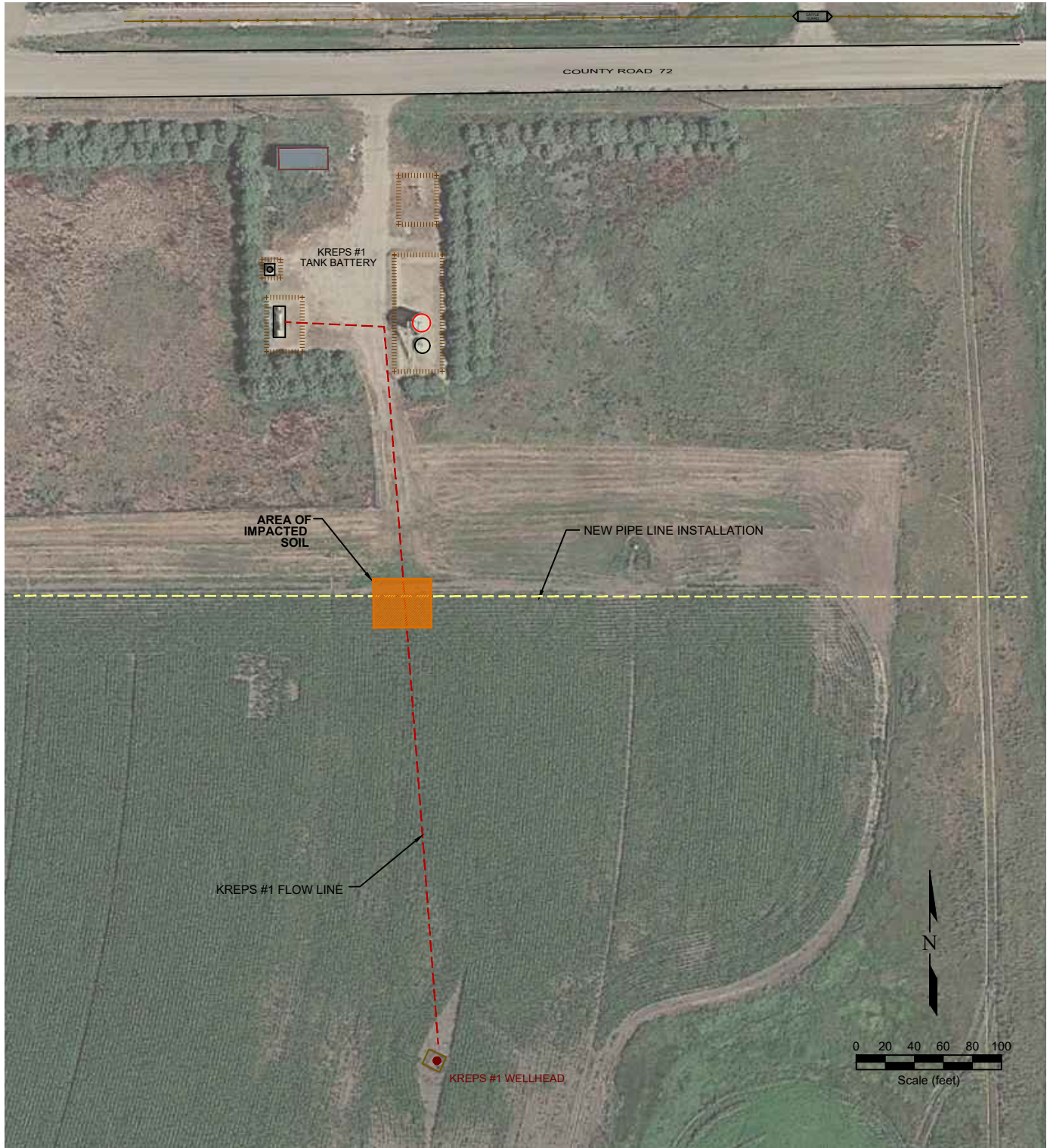
USGS 7.5 MINUTE SERIES (TOPOGRAPHIC)

Figure 1
SITE LOCATION MAP

PDC Energy, Inc. ~ Kreps 1
 NWNE Sec. 7, T6N, R64W, 6th PM
 Weld County, Colorado
 40.506755°, -104.590529°

Project No. CO24-246	API # 05-123-12736	Initial Spill/Release Report Doc# 403979434
Date 12/7/24	Remediation #	Filename 24246T





LEGEND

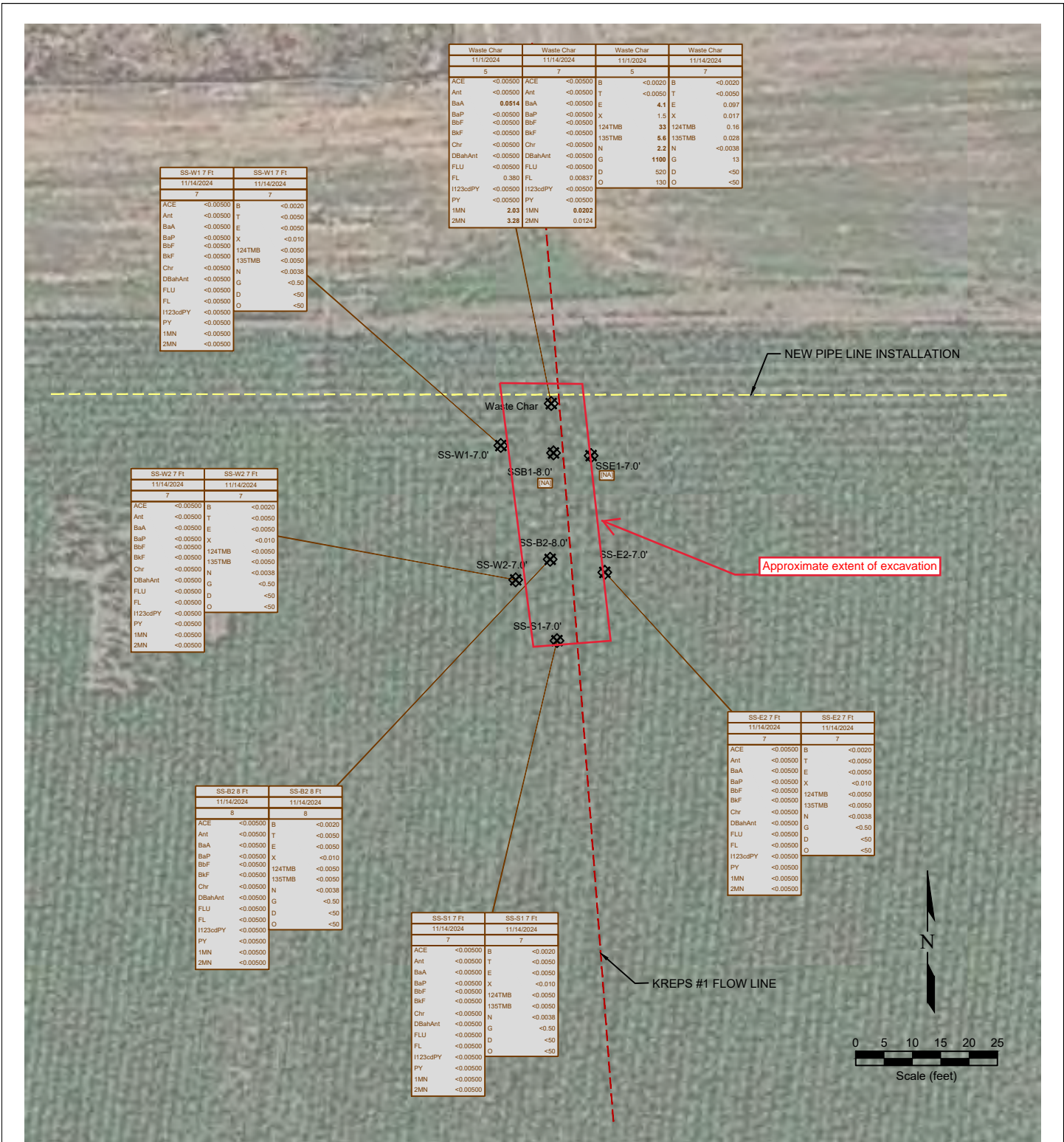
● WELL HEAD LOCATION	○ ABOVE GROUND STORAGE TANK	FORMER FACILITY	NEW PIPE LINE INSTALLATION
AREA OF IMPACTED SOIL	BUILDING	BUILDING	FLOW LINE
			FENCE LINE
			CONTAINMENT BERM

**Figure 2
SITE MAP**

PDC Energy, Inc. ~ Kreds 1
 NWNE Sec. 7, T6N, R64W, 6th PM
 Weld County, Colorado
 40.506755°, -104.590529°

Project No. CO24-246	API # 05-123-12736	Initial Spill/Release Report Doc# 403979434
Date 12/7/24	Remediation #	Filename 24246Q





LEGEND

- SOIL SAMPLE LOCATION
- NEW PIPE LINE INSTALLATION
- FLOW LINE

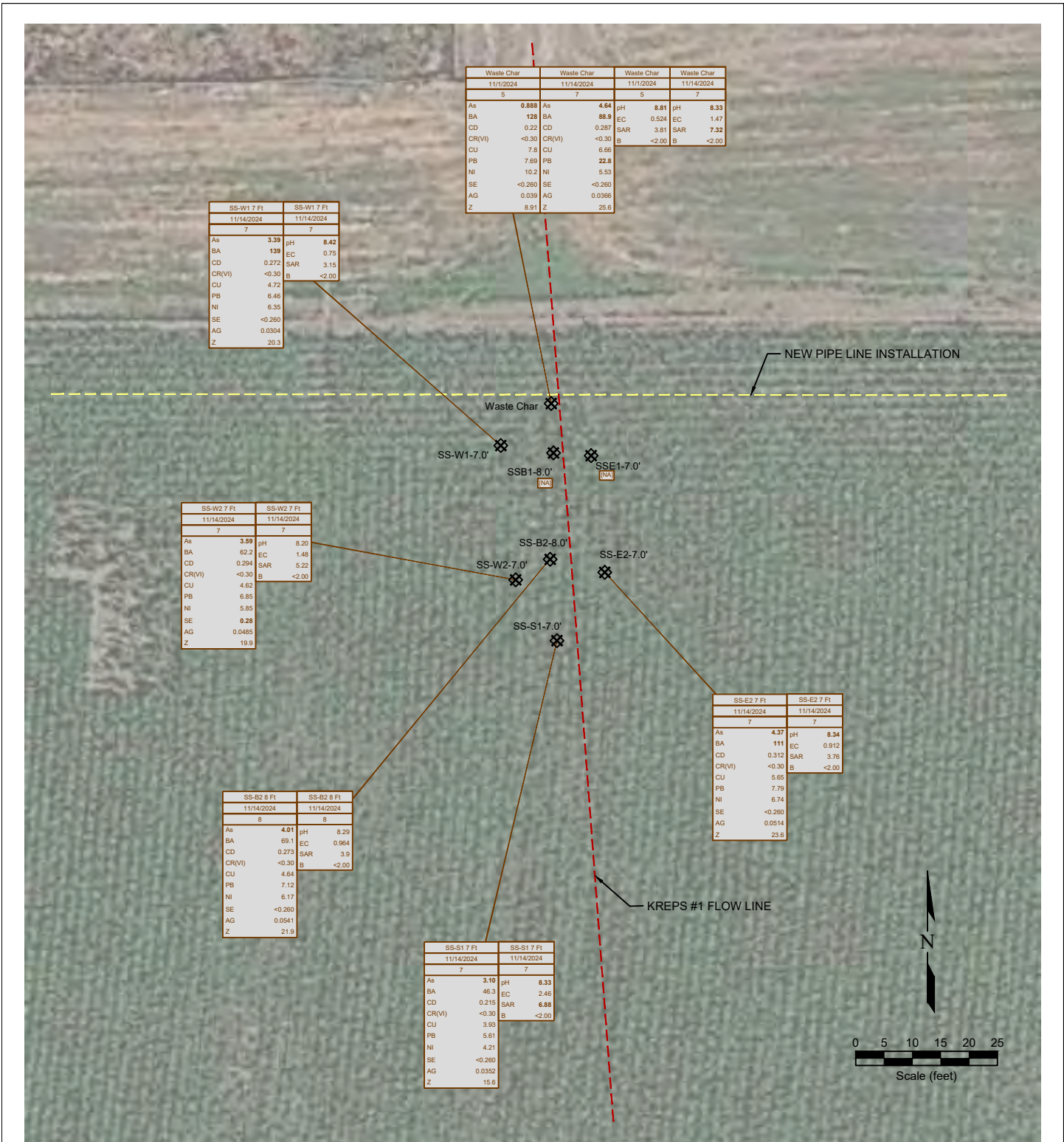
SAMPLE ID	SAMPLE ID	DATE	DATE SAMPLED	DEPTH (ft)	DEPTH (ft)
ACE	ACENAPHTHENE (mg/kg)	B	<0.0020	BENZENE (mg/kg)	
Ant	ANTHRACENE (mg/kg)	T	<0.0050	TOLUENE (mg/kg)	
BaA	BENZO (A) ANTHRACENE (mg/kg)	E	<0.0050	ETHYLBENZENE (mg/kg)	
BaP	BENZO (A) PYRENE (mg/kg)	X	<0.010	TOTAL XYLENES (mg/kg)	
BbF	BENZO (B) FLUORANTHENE (mg/kg)	124TMB	<0.0050	1,2,4-TRIMETHYLBENZENE (mg/kg)	
BkF	BENZO (K) FLUORANTHENE (mg/kg)	135TMB	<0.0050	1,3,5-TRIMETHYLBENZENE (mg/kg)	
Chr	CHRYSENE (mg/kg)	N	<0.0038	NAPHTHALENE (mg/kg)	
DBahAnt	DIBENZ (A,H) ANTHRACENE (mg/kg)	G	<0.50	TPH-DRO (mg/kg)	
FLU	FLUORANTHENE (mg/kg)	D	<50	TPH-DRO (mg/kg)	
FL	FLUORENE (mg/kg)	O	<50	TPH-DRO (mg/kg)	
H123cdPY	INDENO (1,2,3-CD) PYRENE (mg/kg)				
PY	PYRENE (mg/kg)				
1MN	1-METHYLNAPHTHALENE (mg/kg)				
2MN	2-METHYLNAPHTHALENE (mg/kg)				

Figure 3

ORGANIC SOIL CHEMISTRY MAP

PDC Energy, Inc. ~ Kreps 1
 NWNE Sec. 7, T6N, R64W, 6th PM
 Weld County, Colorado
 40.506755°, -104.590529°

Project No.	API #	Initial Spill/Release Report Doc#
CO24-246	05-123-12736	403979434
Date	Remediation #	Filename
12/7/24		24246Q



LEGEND

SOIL SAMPLE LOCATION NEW PIPE LINE INSTALLATION FLOW LINE

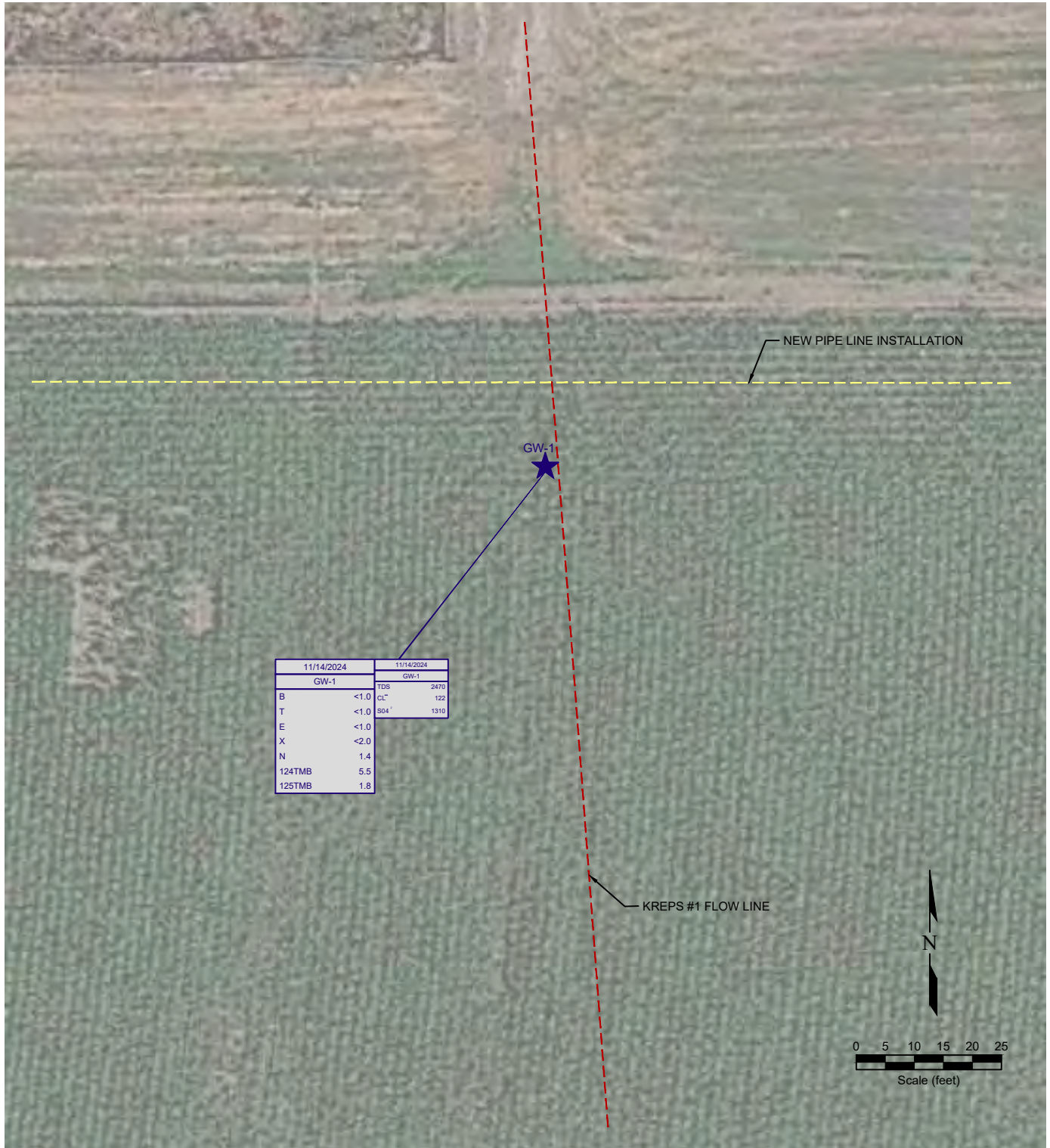
SAMPLE ID	DEPTH (ft)	DATE SAMPLED	DEPTH (ft)	SAMPLE ID	DEPTH (ft)	DATE SAMPLED	DEPTH (ft)	NOT ANALYZED
As	<0.01	ARSENIC (mg/kg)	pH	<0.01	pH (pH units)			
BA	<0.01	BARIUM (mg/kg)	EC	7.00	EC (mmhos/cm)			
CD	<0.01	CADMIUM (mg/kg)	SAR	11	SAR (units)			
CR(VI)	<0.05	CHROMIUM (mg/kg)	B	CU	NICKEL (mg/kg)			
CU	<0.01	COPPER (mg/kg)			SELENIUM (mg/kg)			
PB	<0.01	LEAD (mg/kg)			SILVER (mg/kg)			
NI	<0.05	NICKEL (mg/kg)			ZINC (mg/kg)			
SE	<0.5	SELENIUM (mg/kg)						
AG	<0.05	SILVER (mg/kg)						
Z	<0.05	ZINC (mg/kg)						

Figure 4

METALS AND INORGANIC SOIL CHEMISTRY MAP

PDC Energy, Inc. ~ Kreps 1
 NWNE Sec. 7, T6N, R64W, 6th PM
 Weld County, Colorado
 40.506755°, -104.590529°

Project No. CO24-246	API # 05-123-12736	Initial Spill/Release Report Doc# 403979434	
Date 12/7/24	Remediation #	Filename 24246Q	



LEGEND

★ WATER SAMPLE LOCATION - - - NEW PIPE LINE INSTALLATION - - - FLOW LINE

11/14/2024	DATE SAMPLED	11/14/2024	DATE SAMPLED
GW-1	SAMPLE ID	GW-1	SAMPLE ID
B	BENZENE (ug/L)	TDS	TOTAL DISSOLVED SOLIDS (mg/L)
T	TOLUENE (ug/L)	CL ⁻	CHLORIDE ION (mg/L)
E	ETHYLBENZENE (ug/L)	SO ₄ ⁻²	SULFATE ION (mg/L)
X	TOTAL XYLENES (ug/L)		
N	NAPHTHALENE (ug/L)		
124TMB	1,2,4-TRIMETHYLBENZENE (ug/L)		
125TMB	1,3,5-TRIMETHYLBENZENE (ug/L)		

Figure 5
GROUNDWATER CHEMISTRY MAP

PDC Energy, Inc. ~ Kreps 1
NWNE Sec. 7, T6N, R64W, 6th PM
Weld County, Colorado
40.506755°, -104.590529°

Project No. CO24-246	API # 05-123-12736	Initial Spill/Release Report Doc# 403979434
Date 12/7/24	Remediation #	Filename 24246Q

