



SITE NAME: REINICK C-64N64W 9SENE							DATE: 7/23/2024	REM. PROJECT #: 34552	WEATHER: SUNNY 80		
SITE DIRECTIONS: OFF CR 55							CLIENT: Noble				
LEGALS AND LAT/LONG: 40.330331, -104.547765							TASMAN PERSONNEL: SW				
SOIL TYPES: Well Graded Sand - SW							SURFACE GRADIENT: North				
SOIL SAMPLING							FACILITY INFRASTRUCTURE				
Date/Time	Soil Sample ID	PID (ppm)	Visual	Olfactory	Photo?	Grab or Lab Sample?	EQUIPMENT	Quantity	Photo?		
							Above Ground Storage Tank (AST)	4	✓		
7/23/2024 14:04	GS01@0-6"	0.4	No Staining	No Odor		Grab	Buried or Partially Buried Vessel	4	✓		
7/23/2024 13:31	GS02@0-6"	0.1	No Staining	No Odor		Grab	Separator	2	✓		
7/23/2024 13:36	GS03@0-6"	0.1	No Staining	No Odor		Grab	Emission Control Device (ECD)	3	✓		
7/23/2024 13:45	GS04@0-6"	0.6	No Staining	No Odor		Grab	Dump Line	2	✓		
7/23/2024 13:50	FLARE01@0-6"	0.0	No Staining	No Odor		Grab	Wellhead				
7/23/2024 13:55	FLARE02@0-6"	0.0	No Staining	No Odor		Grab	Flowline				
7/23/2024 12:08	GS05@0-6"	0.0	No Staining	No Odor		Grab	Other: AUTO, GS, MH, VRU				
7/23/2024 11:32	GS06@0-6"	0.1	No Staining	No Odor		Grab	Soil Loads Removed				
7/23/2024 11:37	FLARE03@0-6"	0.1	No Staining	No Odor		Grab	IMPACTED SOIL IDENTIFIED?				
7/23/2024 11:39	MH01@0-6"	0.0	No Staining	No Odor		Grab	ESTIMATED VOLUME OF IMPACTS:				
7/23/2024 12:15	MH02@0-6"	0.0	No Staining	No Odor		Grab	Date	Number	CY		
7/23/2024 12:17	VRU@0-6"	0.0	No Staining	No Odor		Grab					
7/23/2024 12:22	MH03@0-6"	0.0	No Staining	No Odor		Grab					
7/23/2024 12:42	AUTO@0-6"	0.1	No Staining	No Odor		Grab					
7/23/2024 12:44	SEP01-DL@5'	0.5	No Staining	No Odor		Lab					
7/23/2024 12:46	SEP01-FL@5'	0.6	No Staining	No Odor		Lab	Total Removed	0	0		
7/23/2024 12:48	SEP02-DL@5'	0.4	No Staining	No Odor		Lab	Disposal Facility:				
7/23/2024 12:50	SEP02-FL@5'	0.3	No Staining	No Odor		Lab	Groundwater Recovery				
7/23/2024 12:52	PWV01-N@2.5'	0.0	No Staining	No Odor		On-hold	DATE GW ENCOUNTERED:	DEPTH:			
7/23/2024 12:54	PWV01-E@2.5'	0.0	No Staining	No Odor		On-hold	GROUNDWATER IN CONTACT WITH IMPACTED SOIL?				
7/23/2024 12:56	PWV01-W@2.5'	0.1	No Staining	No Odor		Lab					
7/23/2024 12:58	PWV01-B@5'	0.0	No Staining	No Odor		Lab	LNAPL OR SHEEN OBSERVED ON GW?				
GROUNDWATER SAMPLING							Date	BBLs			
Date/Time	Groundwater Sample ID	Depth Collected	Turbid?	Sheen?	Odor?	Photo?					
7/23/2024 14:46	GW01	5'	Low Turbidity	None	None	Yes					
							Total Removed	0			
							Disposal Facility:				





Equipment ID: GS01@0-6"		Equipment Type:	
Material:	Volume:	Contents:	
Notes/Conditions: Land owners materials			

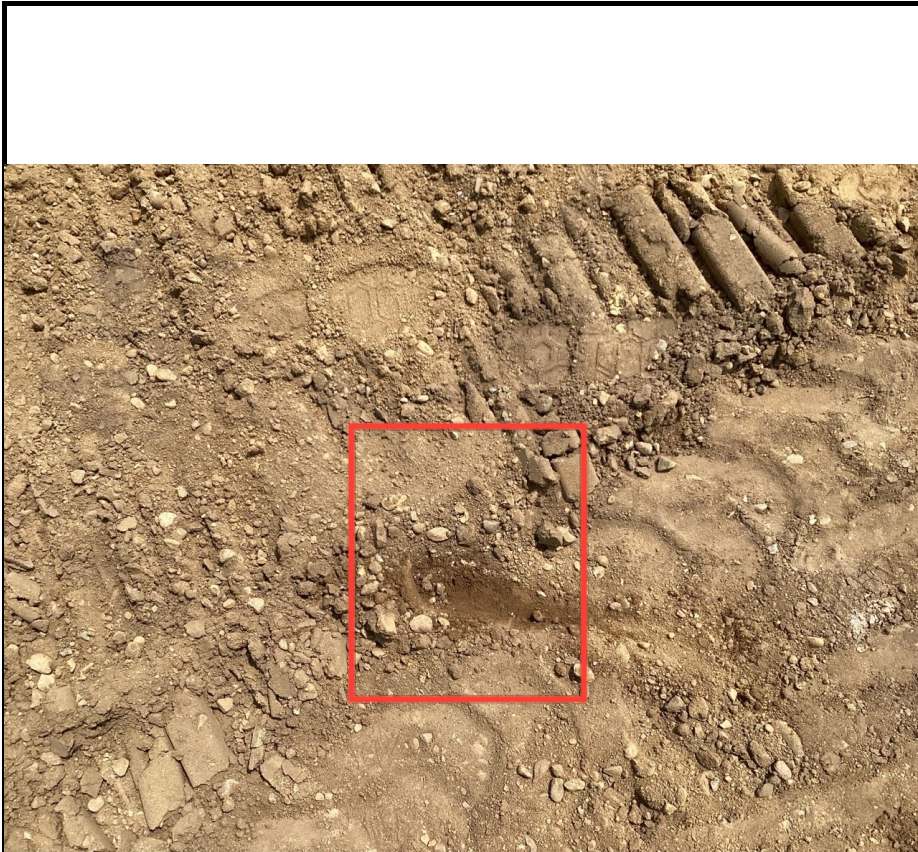
Equipment ID: GS02@0-6"		Equipment Type:	
Material:	Volume:	Contents:	
Notes/Conditions: Landowners materials			



Equipment ID: GS03@0-6"		Equipment Type:	
Material:	Volume:	Contents:	
Notes/Conditions: Land owners materials			



Equipment ID: GS04@0-6"		Equipment Type:	
Material:	Volume:	Contents:	
Notes/Conditions: Land owners material next to already removed MH			

					
Material:	Volume:	Contents:	Material:	Volume:	Contents:
Notes/Conditions:			Notes/Conditions:		



Equipment ID: GS05@0-6*		Equipment Type:	
Material:	Volume:	Contents:	
Notes/Conditions: Landowner material			

Equipment ID: GS06@0-6*		Equipment Type:	
Material:	Volume:	Contents:	
Notes/Conditions: TRUCK			

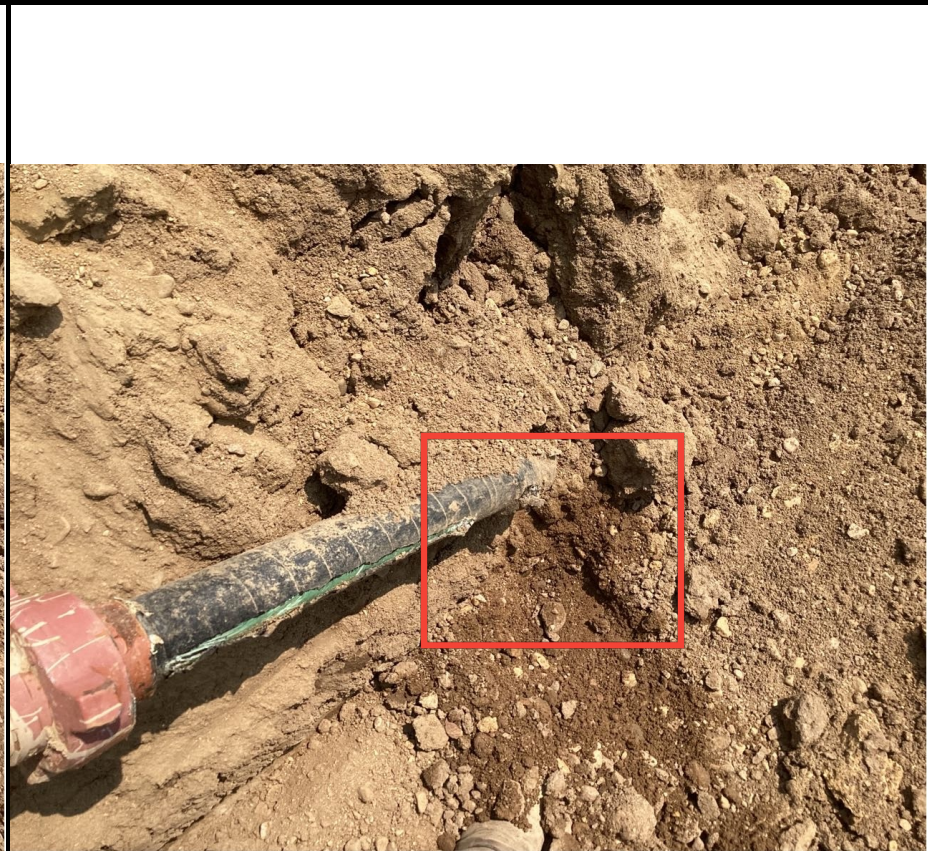
					
Material:	Volume:	Contents:	Equipment ID: MH01@0-6"		Equipment Type:
Material:	Volume:	Contents:	Material:		Volume:
Notes/Conditions:			Notes/Conditions:		



Equipment ID: MH02@0-6"		Equipment Type:		Equipment ID: VRU@0-6"		Equipment Type:	
Material:	Volume:	Contents:		Material:	Volume:	Contents:	
Notes/Conditions:				Notes/Conditions:			

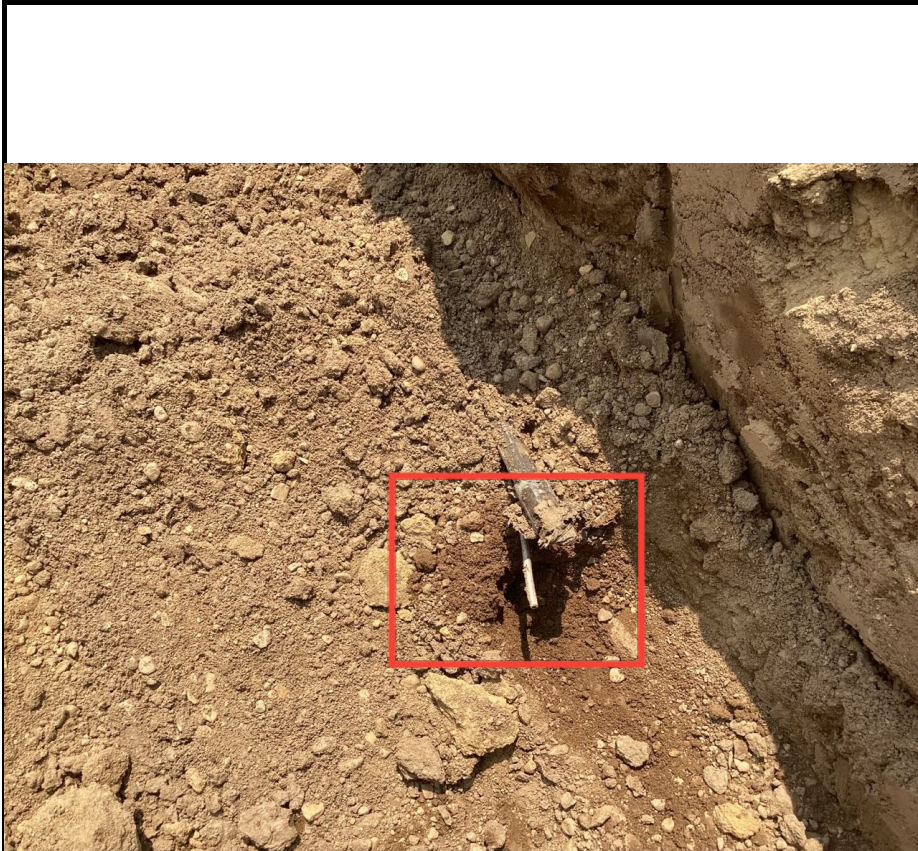


Equipment ID: MH03@0-6"		Equipment Type:		Equipment ID: AUTO@0-6"		Equipment Type:	
Material:	Volume:	Contents:		Material:	Volume:	Contents:	
Notes/Conditions:				Notes/Conditions:			



Equipment ID: SEP01-DL@5' SEP02-DL@5'		Equipment Type:	
Material:	Volume:	Contents:	
Notes/Conditions:			

Equipment ID: SEP01-FL@5'		Equipment Type:	
Material:	Volume:	Contents:	
Notes/Conditions:			

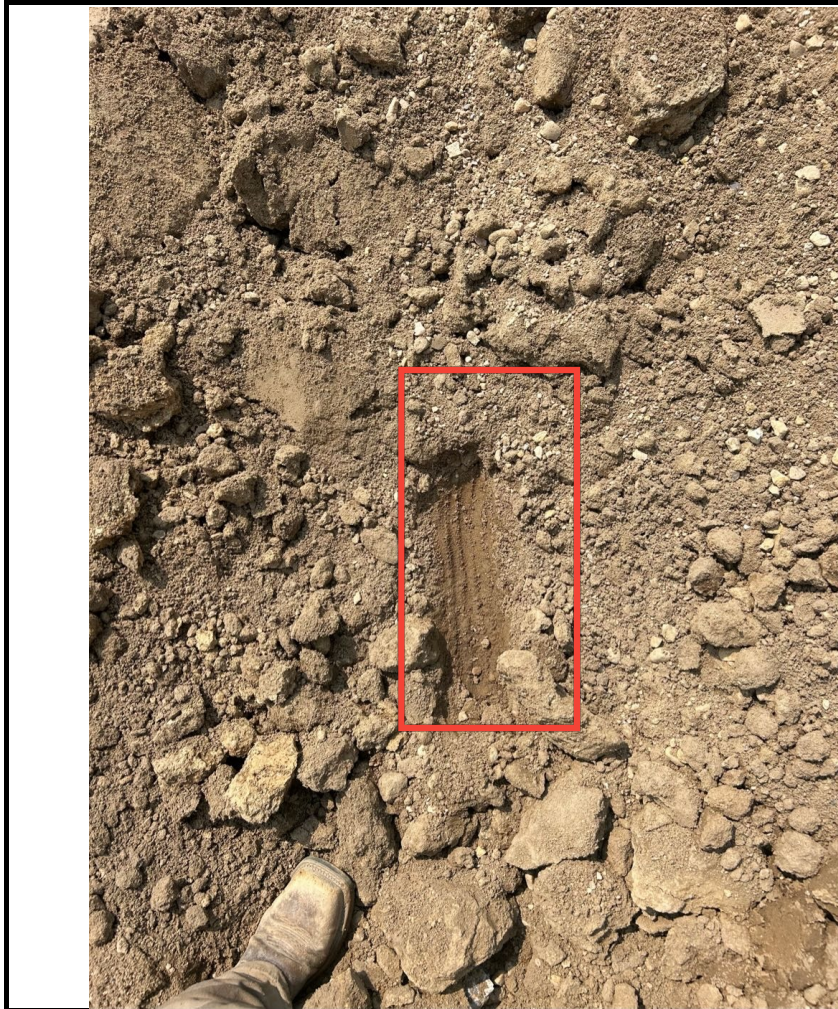


Equipment ID: SEP02-FL@5'		Equipment Type:	
Material:	Volume:	Contents:	
Notes/Conditions:			

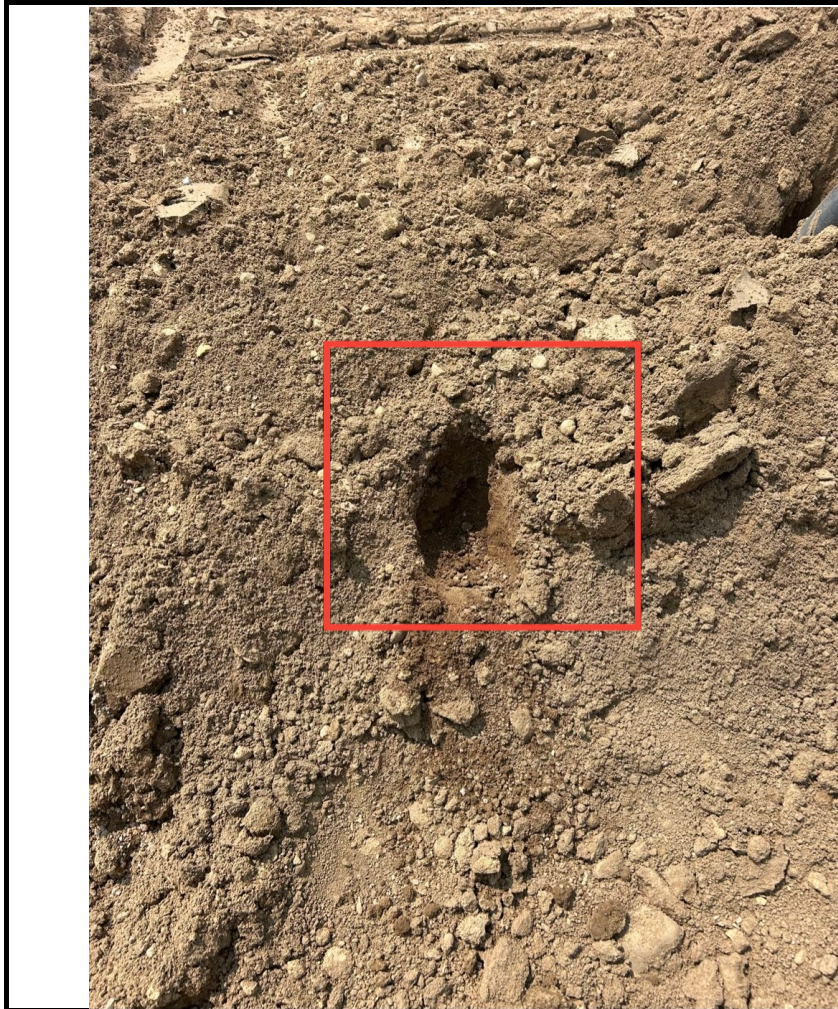
Equipment ID: PWV01-N@2.5'		Equipment Type:	
Material:	Volume:	Contents:	
Notes/Conditions:			





Equipment ID: GW01		Equipment Type:		Equipment ID: PWV01-B@5'		Equipment Type:	
Material:	Volume:	Contents:		Material:	Volume:	Contents:	
Notes/Conditions:				Notes/Conditions:			



Equipment ID: PWV01-W@2.5'		Equipment Type:		Equipment ID: PWV01-E@2.5'		Equipment Type:	
Material:	Volume:	Contents:		Material:	Volume:	Contents:	
Notes/Conditions:				Notes/Conditions:			



Equipment ID: PWV02-W@2.5'		Equipment Type:		Equipment ID: PWV02-B@5'		Equipment Type:	
Material:	Volume:	Contents:		Material:	Volume:	Contents:	
Notes/Conditions:				Notes/Conditions:			

					
Material:	Volume:	Contents:	Material:	Volume:	Contents:
Notes/Conditions:			Notes/Conditions:		



Equipment ID: PWV03-W@2.5'		Equipment Type:		Equipment ID: PWV03-B@5'		Equipment Type:	
Material:	Volume:	Contents:		Material:	Volume:	Contents:	
Notes/Conditions:				Notes/Conditions:			




Equipment ID: PWV04-W@2.5'		Equipment Type:	
Material:	Volume:	Contents:	
Notes/Conditions:			

Equipment ID: PWV04-S@2.5'		Equipment Type:	
Material:	Volume:	Contents:	
Notes/Conditions:			



Equipment ID: PWV04-E@2.5'		Equipment Type:		Equipment ID: PWV04-B@5'		Equipment Type:	
Material:	Volume:	Contents:		Material:	Volume:	Contents:	
Notes/Conditions:				Notes/Conditions:			

					
Equipment ID: ATST01@0-6"		Equipment Type:		Equipment ID: AST02@0-6"	
Material:	Volume:	Contents:		Material:	Volume:
Notes/Conditions:			Notes/Conditions:		

					
Equipment ID: AST03@0-6"		Equipment Type:	Equipment ID: AST04@0-6"		Equipment Type:
Material:	Volume:	Contents:	Material:	Volume:	Contents:
Notes/Conditions:			Notes/Conditions:		



Equipment ID: BKG01@0-6", 1-2', 2.5', 5'		Equipment Type:	
Material:	Volume:	Contents:	
Notes/Conditions:			



Equipment ID:		Equipment Type:	
Material:	Volume:	Contents:	
Notes/Conditions:			

TABLE 1
FIELD DATA SUMMARY TABLE
NOBLE ENERGY, INC (100322)
REINICK C-64N64W 9SENE TANK BATTERY, WELD COUNTY, COLORADO
REM # 34552

Sample ID	Sample Date	Depth (ft. bgs)	GPS Data Latitude/Longitude		PDOP Value	VOC Concentration (ppm)
AST01@0-6"	7/23/2024	0-0.5	40.330745	-104.547935	0.8	0.0
AST02@0-6"	7/23/2024	0-0.5	40.330722	-104.547928	0.9	0.0
AST03@0-6"	7/23/2024	0-0.5	40.330691	-104.547920	0.9	0.0
AST04@0-6"	7/23/2024	0-0.5	40.330658	-104.547905	0.9	0.0
AUTO@0-6"	7/23/2024	0-0.5	40.330498	-104.547876	0.8	0.1
FLARE01@0-6"	7/23/2024	0-0.5	40.330608	-104.548170	0.8	0.0
FLARE02@0-6"	7/23/2024	0-0.5	40.330555	-104.548157	0.9	0.0
FLARE03@0-6"	7/23/2024	0-0.5	40.330222	-104.547919	1.2	1.0
GS01@0-6"	7/23/2024	0-0.5	40.330863	-104.548045	0.8	0.4
GS02@0-6"	7/23/2024	0-0.5	40.330808	-104.548050	0.8	0.1
GS03@0-6"	7/23/2024	0-0.5	40.330786	-104.547973	0.8	0.1
GS04@0-6"	7/23/2024	0-0.5	40.330749	-104.548080	0.8	0.6
GS05@0-6"	7/23/2024	0-0.5	40.330374	-104.547843	1.0	0.0
GS06@0-6"	7/23/2024	0-0.5	40.330274	-104.547953	1.1	0.1
GW01	7/23/2024	5	40.330600	-104.547898	0.8	NC
MH01@0-6"	7/23/2024	0-0.5	40.330217	-104.547843	1.0	0.0
MH02@0-6"	7/23/2024	0-0.5	40.330232	-104.547775	0.9	0.0
MH03@0-6"	7/23/2024	0-0.5	40.330233	-104.547706	0.9	0.0
PWV01-B@5'	7/23/2024	5	40.330598	-104.547903	0.8	0.0
PWV02-B@5'	7/23/2024	5	40.330583	-104.547880	1.0	0.1
PWV03-B@5'	7/23/2024	5	40.330566	-104.547890	1.1	0.1
PWV04-B@5'	7/23/2024	5	40.330543	-104.547889	1.0	0.1
PWV01-E@2.5'	7/23/2024	2.5	40.330608	-104.547871	1.2	0.0
PWV02-E@2.5'	7/23/2024	2.5	40.330586	-104.547865	1.0	0.0
PWV03-E@2.5'	7/23/2024	2.5	40.330569	-104.547857	0.9	0.0
PWV04-E@2.5'	7/23/2024	2.5	40.330552	-104.547851	1.2	0.1
PWV01-N@2.5'	7/23/2024	2.5	40.330618	-104.547885	1.3	0.0
PWV04-S@2.5'	7/23/2024	2.5	40.330541	-104.547861	1.3	0.2
PWV01-W@2.5'	7/23/2024	2.5	40.330586	-104.547920	0.9	0.1
PWV02-W@2.5'	7/23/2024	2.5	40.330582	-104.547915	0.9	0.1
PWV03-W@2.5'	7/23/2024	2.5	40.330560	-104.547918	1.0	0.0
PWV04-W@2.5'	7/23/2024	2.5	40.330542	-104.547914	0.8	0.0
SEP01-DL@5'	7/23/2024	5	40.330358	-104.547780	1.0	0.6
SEP02-DL@5'	7/23/2024	5	40.330327	-104.547768	0.9	0.3
SEP01-FL@5'	7/23/2024	5	40.330357	-104.547767	1.0	0.5
SEP02-FL@5'	7/23/2024	5	40.330322	-104.547753	0.9	0.4
VRU@0-6"	7/23/2024	0-0.5	40.330333	-104.547716	1.0	0.0
BKG01@0-6"	7/23/2024	0-0.5	40.331185	-104.548144	0.0	0.2
BKG01@1-2'	7/23/2024	1-2	40.331185	-104.548144	0.0	0.3
BKG01@2.5'	7/23/2024	2.5	40.331185	-104.548144	0.0	0.3
BKG01@5'	7/23/2024	5	40.331185	-104.548144	0.0	0.2

Notes:

1. Global Positioning System (GPS) data is provided in decimal degrees using North American Datum (NAD) 83 UTMZone 13 North.
 2. Volatile organic compound (VOC) concentrations are measured in the field using a photoionization detector (PID).
- PDOP = Position Dilution of Precision
ppm = Parts per million
in. = Inches
ft. = Feet
bgs = Below ground surface
NC = Data not collected

TABLE 2
SUMMARY OF VOLATILE ORGANIC SOIL CHEMISTRY DATA
NOBLE ENERGY, INC (100322)
REINICK C-64N64W 9SENE TANK BATTERY, WELD COUNTY, COLORADO
REM # 34552

Sample ID	Sample Date	Depth (ft. bgs)	Benzene (mg/kg)	Toluene (mg/kg)	Ethyl-Benzene (mg/kg)	Xylenes (mg/kg)	1,2,4-Trimethyl-Benzene (mg/kg)	1,3,5-Trimethyl-Benzene (mg/kg)	Naphthalene (mg/kg)	TPH (mg/kg)	TPH GRO (mg/kg)	TPH DRO (mg/kg)	TPH ORO (mg/kg)
ECMC Table 915-1 Limits (Residential SSL)			1.2	490	5.8	58	30	27	2	500	500**		
ECMC Table 915-1 Limits (Protection of Groundwater SSL)			0.0026	0.69	0.78	9.9	0.0081	0.0087	0.0038	500	500**		
AST01@0-6"	07/23/2024	0-0.5	<0.0020	<0.0050	<0.0050	<0.010	<0.0050	<0.0050	<0.0038	<500	<0.50	<50	<50
AST02@0-6"	07/23/2024	0-0.5	<0.0020	<0.0050	<0.0050	<0.010	<0.0050	<0.0050	<0.0038	<500	<0.50	<50	<50
AST03@0-6"	07/23/2024	0-0.5	<0.0020	<0.0050	<0.0050	<0.010	<0.0050	<0.0050	<0.0038	<500	<0.50	<50	<50
AST04@0-6"	07/23/2024	0-0.5	<0.0020	<0.0050	<0.0050	<0.010	<0.0050	<0.0050	<0.0038	<500	<0.50	<50	<50
PWV01-B@5'	07/23/2024	5	<0.0020	<0.0050	<0.0050	<0.010	<0.0050	<0.0050	<0.0038	<500	<0.50	<50	<50
PWV02-B@5'	07/23/2024	5	<0.0020	<0.0050	<0.0050	<0.010	<0.0050	<0.0050	<0.0038	<500	<0.50	<50	<50
PWV03-B@5'	07/23/2024	5	<0.0020	<0.0050	<0.0050	<0.010	<0.0050	<0.0050	<0.0038	<500	<0.50	<50	<50
PWV04-B@5'	07/23/2024	5	<0.0020	<0.0050	<0.0050	<0.010	<0.0050	<0.0050	<0.0038	<500	<0.50	<50	<50
PWV03-E@2.5'	07/23/2024	2.5	<0.0020	<0.0050	<0.0050	<0.010	<0.0050	<0.0050	<0.0038	<500	<0.50	<50	<50
PWV04-S@2.5'	07/23/2024	2.5	<0.0020	<0.0050	<0.0050	<0.010	<0.0050	<0.0050	<0.0038	<500	<0.50	<50	<50
PWV01-W@2.5'	07/23/2024	2.5	<0.0020	<0.0050	<0.0050	<0.010	<0.0050	<0.0050	<0.0038	<500	<0.50	<50	<50
PWV02-W@2.5'	07/23/2024	2.5	<0.0020	<0.0050	<0.0050	<0.010	<0.0050	<0.0050	<0.0038	<500	<0.50	<50	<50
SEP01-DL@5'	07/23/2024	5	<0.0020	<0.0050	<0.0050	<0.010	<0.0050	<0.0050	<0.0038	<500	<0.50	<50	<50
SEP02-DL@5'	07/23/2024	5	<0.0020	<0.0050	<0.0050	<0.010	<0.0050	<0.0050	<0.0038	<500	<0.50	<50	<50
SEP01-FL@5'	07/23/2024	5	<0.0020	<0.0050	<0.0050	<0.010	<0.0050	<0.0050	<0.0038	<500	<0.50	<50	<50
SEP02-FL@5'	07/23/2024	5	<0.0020	<0.0050	<0.0050	<0.010	<0.0050	<0.0050	<0.0038	<500	<0.50	<50	<50

Notes:

1. **Bold** values exceed the ECMC Table 915-1 limit(s).
2. Pink & blue highlighted soil analytical values indicate an exceedance of the referenced soil screening level (SSL).
3. * Indicates laboratory minimum detection limit in excess of SSL.
4. ** Summation of GRO+DRO+ORO must be less than 500 mg/kg.

ECMC = Energy & Carbon Management Commission

(<) = Analytical result is less than the indicated laboratory reporting limit.

TPH-GRO = Total petroleum hydrocarbons - gasoline range organics

TPH-DRO = Total petroleum hydrocarbons - diesel range organics

TPH-ORO = Total petroleum hydrocarbons - oil range organics

mg/kg = Milligrams per kilogram

ft. = Feet

bgs = Below ground surface

TABLE 3
SUMMARY OF POLYCYCLIC AROMATIC HYDROCARBON SOIL CHEMISTRY DATA
NOBLE ENERGY, INC (100322)
REINICK C-64N64W 9SENE TANK BATTERY, WELD COUNTY, COLORADO
REM # 34552

Sample ID	Sample Date	Depth (ft. bgs)	Acenaphthene (mg/kg)	Anthracene (mg/kg)	Benzo (a) Anthracene (mg/kg)	Benzo (a) Pyrene (mg/kg)	Benzo (b) Fluoranthene (mg/kg)	Benzo (k) Fluoranthene (mg/kg)	Chrysene (mg/kg)	Dibenzo (a,h) Anthracene (mg/kg)	Fluoranthene (mg/kg)	Fluorene (mg/kg)	Indeno (1,2,3-cd) Pyrene (mg/kg)	Pyrene (mg/kg)	1-Methyl - Naphthalene (mg/kg)	2-Methyl- Naphthalene (mg/kg)
ECMC Table 915-1 Limits (Residential SSL)			360	1,800	1.1	0.11	1.1	11	110	0.11	240	240	1.1	180	18	24
ECMC Table 915-1 Limits (Protection of Groundwater SSL)			0.55	5.8	0.011	0.24	0.3	2.9	9	0.096	8.9	0.54	0.98	1.3	0.006	0.019
AST01@0-6"	07/23/2024	0-0.5	<0.00500	<0.00500	<0.00500	<0.00500	<0.00500	<0.00500	<0.00500	<0.00500	<0.00500	<0.00500	<0.00500	<0.00500	<0.00500	<0.00500
AST02@0-6"	07/23/2024	0-0.5	<0.00500	<0.00500	<0.00500	<0.00500	<0.00500	<0.00500	<0.00500	<0.00500	<0.00500	<0.00500	<0.00500	<0.00500	<0.00500	<0.00500
AST03@0-6"	07/23/2024	0-0.5	<0.00500	<0.00500	<0.00500	<0.00500	<0.00500	<0.00500	<0.00500	<0.00500	<0.00500	<0.00500	<0.00500	<0.00500	<0.00500	<0.00500
AST04@0-6"	07/23/2024	0-0.5	<0.00500	<0.00500	<0.00500	<0.00500	<0.00500	<0.00500	<0.00500	<0.00500	<0.00500	<0.00500	<0.00500	<0.00500	<0.00500	<0.00500
PWV01-B@5'	07/23/2024	5	<0.00500	<0.00500	<0.00500	<0.00500	<0.00500	<0.00500	<0.00500	<0.00500	<0.00500	<0.00500	<0.00500	<0.00500	<0.00500	<0.00500
PWV02-B@5'	07/23/2024	5	<0.00500	<0.00500	<0.00500	<0.00500	<0.00500	<0.00500	<0.00500	<0.00500	<0.00500	<0.00500	<0.00500	<0.00500	<0.00500	<0.00500
PWV03-B@5'	07/23/2024	5	<0.00500	<0.00500	<0.00500	<0.00500	<0.00500	<0.00500	<0.00500	<0.00500	<0.00500	<0.00500	<0.00500	<0.00500	<0.00500	<0.00500
PWV04-B@5'	07/23/2024	5	<0.00500	<0.00500	<0.00500	<0.00500	<0.00500	<0.00500	<0.00500	<0.00500	<0.00500	<0.00500	<0.00500	<0.00500	<0.00500	<0.00500
PWV03-E@2.5'	07/23/2024	2.5	<0.00500	<0.00500	<0.00500	<0.00500	<0.00500	<0.00500	<0.00500	<0.00500	<0.00500	<0.00500	<0.00500	<0.00500	<0.00500	<0.00500
PWV04-S@2.5'	07/23/2024	2.5	<0.00500	<0.00500	<0.00500	<0.00500	<0.00500	<0.00500	<0.00500	<0.00500	<0.00500	<0.00500	<0.00500	<0.00500	<0.00500	<0.00500
PWV01-W@2.5'	07/23/2024	2.5	<0.00500	<0.00500	<0.00500	<0.00500	<0.00500	<0.00500	<0.00500	<0.00500	<0.00500	<0.00500	<0.00500	<0.00500	<0.00500	<0.00500
PWV02-W@2.5'	07/23/2024	2.5	<0.00500	<0.00500	<0.00500	<0.00500	<0.00500	<0.00500	<0.00500	<0.00500	<0.00500	<0.00500	<0.00500	<0.00500	<0.00500	<0.00500
SEP01-DL@5'	07/23/2024	5	<0.00500	<0.00500	<0.00500	<0.00500	<0.00500	<0.00500	<0.00500	<0.00500	<0.00500	<0.00500	<0.00500	<0.00500	<0.00500	<0.00500
SEP02-DL@5'	07/23/2024	5	<0.00500	<0.00500	<0.00500	<0.00500	<0.00500	<0.00500	<0.00500	<0.00500	<0.00500	<0.00500	<0.00500	<0.00500	<0.00500	<0.00500
SEP01-FL@5'	07/23/2024	5	<0.00500	<0.00500	<0.00500	<0.00500	<0.00500	<0.00500	<0.00500	<0.00500	<0.00500	<0.00500	<0.00500	<0.00500	<0.00500	<0.00500
SEP02-FL@5'	07/23/2024	5	<0.00500	<0.00500	<0.00500	<0.00500	<0.00500	<0.00500	<0.00500	<0.00500	<0.00500	<0.00500	<0.00500	<0.00500	<0.00500	<0.00500

Notes:

1. **Bold** values exceed the ECMC Table 915-1 limit(s).
2. Pink & blue highlighted soil analytical values indicate an exceedance of the referenced soil screening level (SSL).
3. * Indicates laboratory minimum detection limit in excess of SSL.

ECMC = Colorado Energy & Carbon Management Commission

(<) = Analytical result is less than the indicated laboratory reporting limit.

ft. = Feet

bgs = Below ground surface

mg/kg = Milligrams per kilogram

TABLE 4
SUMMARY OF SOIL SUITABILITY FOR RECLAMATION
NOBLE ENERGY, INC (100322)
REINICK C-64N64W 9SENE TANK BATTERY, WELD COUNTY, COLORADO
REM # 34552

Sample ID	Sample Date	Depth (ft. bgs)	pH (Standard Units)	EC (mmhos/cm)	SAR (Standard Units)	Boron (mg/L)
ECMC Table 915-1 Soil Suitability Limits			6 - 8.3	<4	<6	2
AST01@0-6"	07/23/2024	0-0.5	7.34	0.198	0.334	<2.00
AST02@0-6"	07/23/2024	0-0.5	7.74	0.533	0.306	<2.00
AST03@0-6"	07/23/2024	0-0.5	8.14	0.618	0.514	<2.00
AST04@0-6"	07/23/2024	0-0.5	7.43	0.488	0.263	<2.00
PWV01-B@5'	07/23/2024	5	8.04	0.431	1.59	<2.00
PWV02-B@5'	07/23/2024	5	8.05	0.412	1.20	<2.00
PWV03-B@5'	07/23/2024	5	7.21	0.359	0.521	<2.00
PWV04-B@5'	07/23/2024	5	8.12	0.664	1.74	<2.00
PWV03-E@2.5'	07/23/2024	2.5	6.64	0.721	1.00	<2.00
PWV04-S@2.5'	07/23/2024	2.5	7.74	0.602	1.49	<2.00
PWV01-W@2.5'	07/23/2024	2.5	8.29	0.227	0.532	<2.00
PWV02-W@2.5'	07/23/2024	2.5	8.28	0.262	0.538	<2.00
SEP01-DL@5'	07/23/2024	5	7.85	0.194	0.0799	<2.00
SEP02-DL@5'	07/23/2024	5	7.58	0.184	0.0647	<2.00
SEP01-FL@5'	07/23/2024	5	8.66	0.176	0.0556	<2.00
SEP02-FL@5'	07/23/2024	5	8.28	0.136	0.0265	<2.00
BKG01@0-6"	07/23/2024	0-0.5	8.33	0.384	0.715	<2.00
BKG01@1-2'	07/23/2024	1-2	8.50	0.643	2.52	<2.00
BKG01@2.5'	07/23/2024	2.5	8.20	2.49	12.8	<2.00
BKG01@5'	07/23/2024	5	8.37	1.58	9.68	<2.00
Maximum Background Concentration			8.50	-	-	-

Notes:

1. **Bold** faced values exceed the ECMC Table 915-1 limit(s), but are within 1.25x background concentrations.
2. **Bold** faced values exceed the ECMC Table 915-1 limit(s), and are above native background concentrations.
3. Brown highlighted soil analytical values indicate a regulatory exceedance.

ECMC = Colorado Energy & Carbon Management Commission

EC = Electrical conductivity

SAR = Sodium adsorption ratio

mmhos/cm = millimhos per centimeter

mg/L = milligram per liter

(<) = Analytical result is less than the indicated laboratory reporting limit.

ft. = Feet

bgs = Below ground surface

TABLE 5
SUMMARY OF METALS IN SOIL CHEMISTRY DATA
NOBLE ENERGY, INC (100322)
REINICK C-64N64W 9SENE TANK BATTERY, WELD COUNTY, COLORADO
REM # 34552

Sample ID	Sample Date	Depth (ft. bgs)	Arsenic (mg/kg)	Barium (mg/kg)	Cadmium (mg/kg)	Chromium (VI) ^[4] (mg/kg)	Copper (mg/kg)	Lead (mg/kg)	Nickel (mg/kg)	Selenium (mg/kg)	Silver (mg/kg)	Zinc (mg/kg)
ECMC Table 915-1 Limits (Residential SSL)			0.68	15,000	71	0.3	3,100	400	1,500	390	390	23,000
ECMC Table 915-1 Limits (Protection of Groundwater SSL)			0.29	82	0.38	0.00067	46	14	26	0.26	0.8	370
AST01@0-6"	07/23/2024	0-0.5	0.488	2.93	<0.200	<0.30*	0.692	0.850	0.468	<0.260	<0.0200	2.21
AST02@0-6"	07/23/2024	0-0.5	1.50	15.8	<0.200	<0.30*	3.28	5.06	1.71	<0.260	<0.0200	18.3
AST03@0-6"	07/23/2024	0-0.5	1.59	21.7	<0.200	<0.30*	3.06	3.74	1.78	<0.260	<0.0200	19.9
AST04@0-6"	07/23/2024	0-0.5	0.518	2.67	<0.200	<0.30*	1.04	0.991	0.756	<0.260	<0.0200	3.16
PWV01-B@5'	07/23/2024	5	2.08	52.3	<0.200	<0.30*	3.37	7.07	3.15	<0.260	0.0292	22.5
PWV02-B@5'	07/23/2024	5	2.24	52.6	<0.200	<0.30*	3.59	8.38	3.37	<0.260	0.0282	21.4
PWV03-B@5'	07/23/2024	5	2.51	64.3	<0.200	<0.30*	3.86	8.60	3.61	<0.260	0.0297	57.7
PWV04-B@5'	07/23/2024	5	2.01	45.7	<0.200	<0.30*	3.75	6.35	3.17	<0.260	0.0301	21.2
PWV03-E@2.5'	07/23/2024	2.5	2.71	38.7	<0.200	<0.30*	3.19	5.86	3.03	<0.260	<0.0200	58.3
PWV04-S@2.5'	07/23/2024	2.5	2.96	75.1	0.210	<0.30*	4.26	7.02	4.43	<0.260	0.0269	18.8
PWV01-W@2.5'	07/23/2024	2.5	3.06	67.0	0.229	<0.30*	4.27	9.53	3.76	<0.234	0.0423	43.4
PWV02-W@2.5'	07/23/2024	2.5	2.11	49.8	<0.200	<0.30*	3.39	6.56	3.12	<0.260	0.0241	18.9
SEP01-DL@5'	07/23/2024	5	7.40	51.0	0.688	<0.30*	4.67	8.51	4.30	<0.260	<0.0200	16.0
SEP02-DL@5'	07/23/2024	5	2.06	50.2	0.406	<0.30*	3.73	6.33	3.21	<0.260	<0.0200	17.0
SEP01-FL@5'	07/23/2024	5	2.03	51.2	<0.200	<0.30*	3.88	5.69	3.14	<0.260	0.0229	15.5
SEP02-FL@5'	07/23/2024	5	2.37	54.8	0.299	<0.30*	4.01	6.15	3.22	<0.232	0.0232	18.0
BKG01@0-6"	07/23/2024	0-0.5	2.03	47.1	0.205	<0.30*	4.41	7.04	3.40	<0.260	0.0478	18.5
BKG01@1-2'	07/23/2024	1-2	2.85	59.7	<0.179	<0.30*	3.92	5.64	4.10	<0.232	0.0277	15.2
BKG01@2.5'	07/23/2024	2.5	1.08	35.5	<0.200	<0.30*	2.17	2.93	2.72	<0.260	<0.0200	10.1
BKG01@5'	07/23/2024	5	1.14	34.7	<0.200	<0.30*	1.95	2.53	2.47	<0.260	<0.0200	9.81
Maximum Background Concentration X 1.25			3.56	-	0.256	-	-	-	-	-	-	-

Notes:

- Bold** faced values exceed the ECMC Table 915-1 limit(s), but are within 1.25x background concentrations.
- Bold** faced values exceed the ECMC Table 915-1 limit(s) above native background concentrations.
- Red & blue highlighted soil analytical values indicate an exceedance of the referenced soil screening level (SSL).
- Compound falls within ECMC Table 915-1 Footnote 9.
- Non-detect background results accounted for in the highest background concentration by using the reporting limit.

ECMC = Energy & Carbon Management Commission

(<) = Analytical result is less than the indicated laboratory reporting limit.

mg/kg = Milligrams per kilogram

ft. = Feet

bgs = Below ground surface

* Indicates laboratory minimum detection limit in excess of SSL

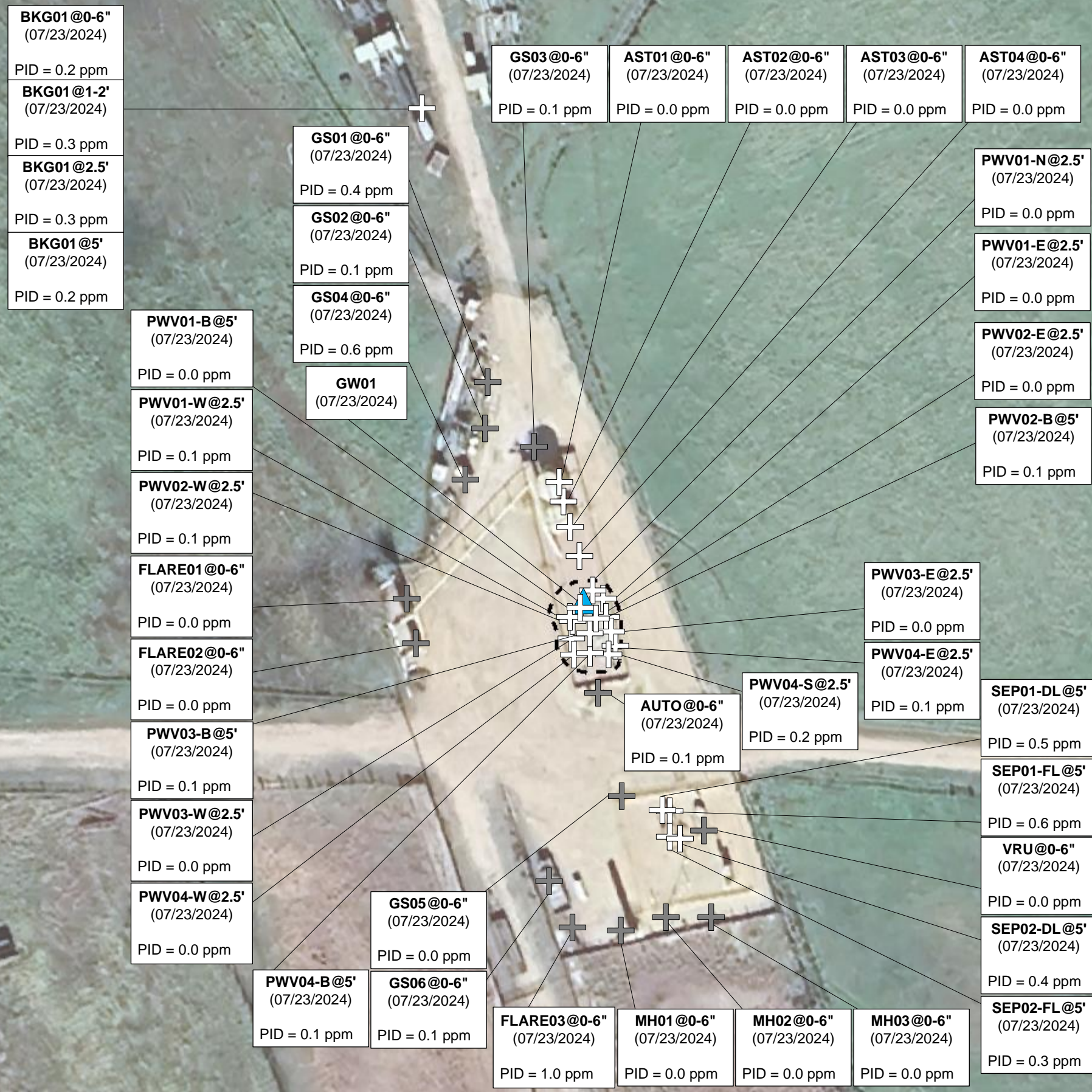
TABLE 6
SUMMARY OF GROUNDWATER ELEVATION DATA AND ORGANIC CHEMISTRY DATA
NOBLE ENERGY, INC (100322)
REINICK C-64N64W 9SENE TANK BATTERY, WELD COUNTY, COLORADO
REM # 34552

Sample ID	Sample Date	Benzene (µg/L)	Toluene (µg/L)	Ethyl-Benzene (µg/L)	Xylenes (µg/L)	Naphthalene (µg/L)	1,2,4- Trimethyl- Benzene (µg/L)	1,3,5- Trimethyl- Benzene (µg/L)	TOC Elevation (ft)	Depth to Groundwater Below TOC (ft)	Depth to Groundwater Below Ground Surface (ft)	Groundwater Elevation (ft)	LNAPL Thickness (ft)
ECMC Table 915-1 Limits		5.0	560	700	1400	140	67	67					
GW01	07/23/24	<1.0	<1.0	<1.0	<2.0	<1.0	<1.0	<1.0	NC	NC	NC	NC	NC

1. Bold values exceed the ECMC limit(s).

2. Red highlighted groundwater analytical values indicate a regulatory exceedance.

NC = Not Collected



Legend

- Excavation Extent (Collected via Trimble GPS)
- ⊕ Soil Sample Location – Field Screen (Collected via Trimble GPS)
- ⊕ Soil Sample Location – Lab Analyzed (Collected via Trimble GPS)
- ▲ Groundwater Sample Location (Collected via Trimble GPS)

Notes

- 1) All locations are approximate unless otherwise noted.
- 2) Buried infrastructure has been spatially projected.

GPS – Global Positioning System
 PID – Photoionization Detector
 ppm – Parts per million

0 ft. 50 ft. 100 ft.

Image Source: Google Earth; Google 2022

DATE: 7/23/2024

DESIGNED BY: JW

DRAWN BY: LR

TASMAN
 Tasman, Inc.
 6855 W 119th Avenue
 Broomfield, CO 80020

Noble Energy, Inc. (100322) – DJ Basin
Reinick C-64N64W 9SENE
 SENE, Section 9, Township 4 North, Range 64 West
 Weld County, Colorado

Tank Battery Closure & Soil
 Analytical Results Map
 (07/23/2024)

FIGURE
 1