

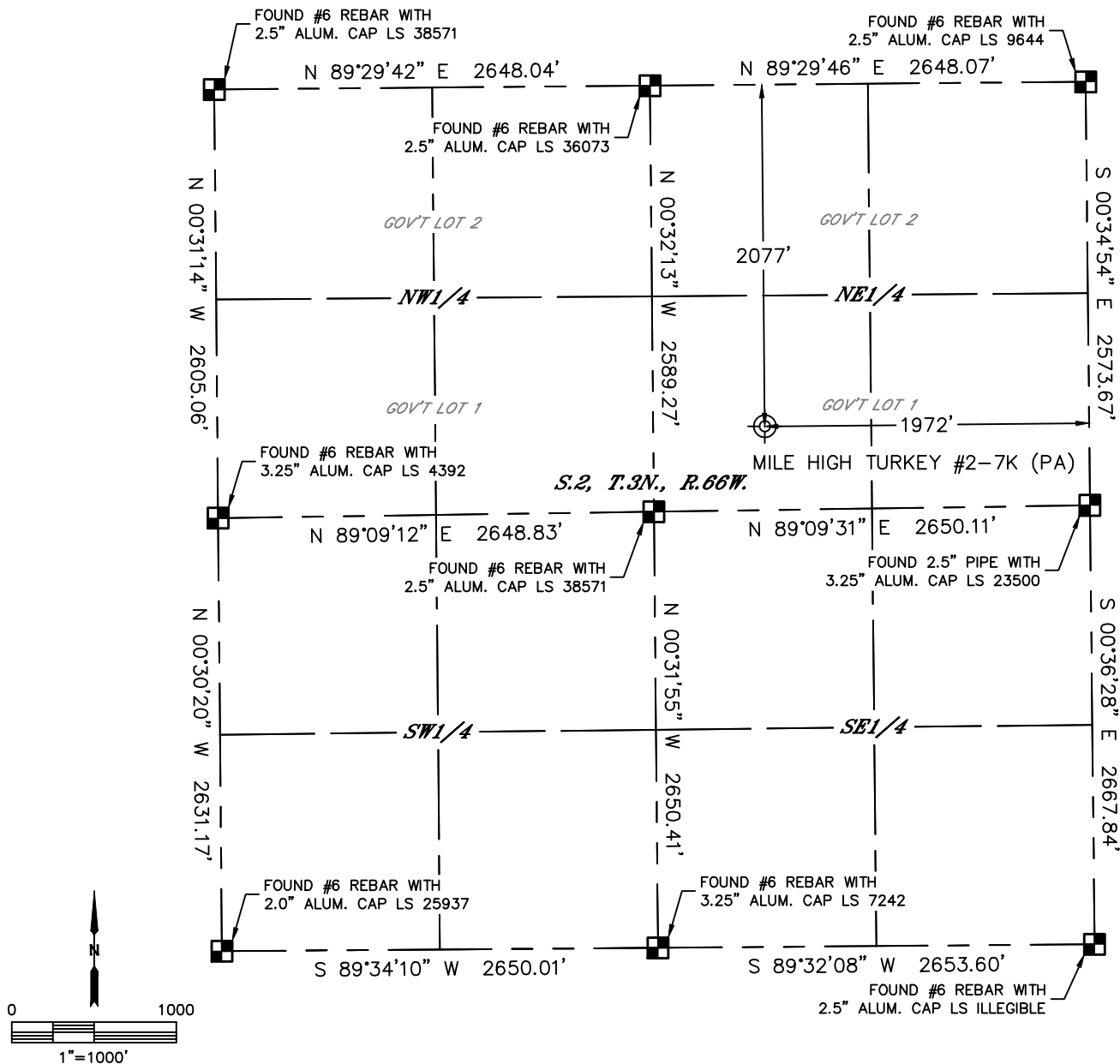


Lat40°, Inc. 6250 W. 10th Street, Unit 2, Greeley, CO 970-515-5294

# PLUGGED AND ABANDONED WELL EXHIBIT

**MILE HIGH TURKEY #2-7K**

SECTION: 2  
TOWNSHIP: 3N  
RANGE: 66W  
6TH. P.M.  
WELD COUNTY, CO



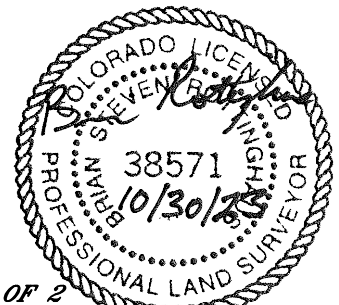
CLIENT: PDC ENERGY					LANDMAN: PAUL MONTVILLE							
INSTRUMENT OPERATOR: CASEY KOHOUT					SURVEY DATE: 10/23/2023		SURFACE USE: CROPLAND					
SHL FOOTAGE			SHL LAT °		SHL LONG °		SHL PDOP	SHL ELEV (FT.)	SHL 1/4/1/4	SHL S-T-R		
2077		FNL	1972	FEL	40.25538		-104.74193		1.0	4879	SWNE	2-3-66
DESCRIPTION: LOCATED EXPOSED WELL. FOUND 9" STEEL PIPE WITH STEEL PLATE.												

## NOTE:

- 1) Bearings shown are Grid Bearings of the Colorado State Plane Coordinate System, North Zone, North American Datum 1983. The lineal dimensions as contained herein are based upon the "U.S. Survey Foot."
- 2) Distances to section lines measured at 90 degrees from said section lines.
- 3) Ground elevations are based on an observed GPS elevation (NAVD 1988 DATUM).
- 4) Latitude and Longitude shown are (NAD 83 DATUM).
- 5) Sectional data as shown hereon is from previous surveys and was not verified for this P&A Exhibit.
- 6) This map does not represent a boundary survey.

## LEGEND

- = ALIQUOT MONUMENT AS DESCRIBED
- = CALCULATED POSITION
- ⊗ = ABANDONED WELL



**SHEET 1 OF 2**

Brian S. Rottinghaus—On behalf of Lat40°, Inc.  
Colorado Licensed Professional Land Surveyor No. 38571  
DATE: 10/30/2023  
PROJECT#: 2023428



Lat40°, Inc. 6250 W. 10th Street, Unit 2, Greeley, CO 970-515-5294

## PLUGGED AND ABANDONED WELL EXHIBIT

**MILE HIGH TURKEY #2-7K**

SECTION: 2  
TOWNSHIP: 3N  
RANGE: 66W  
6TH. P.M.  
WELD COUNTY, CO  
DATE: 10/23/2023



VIEW NORTH



VIEW WEST



VIEW EAST



VIEW SOUTH