

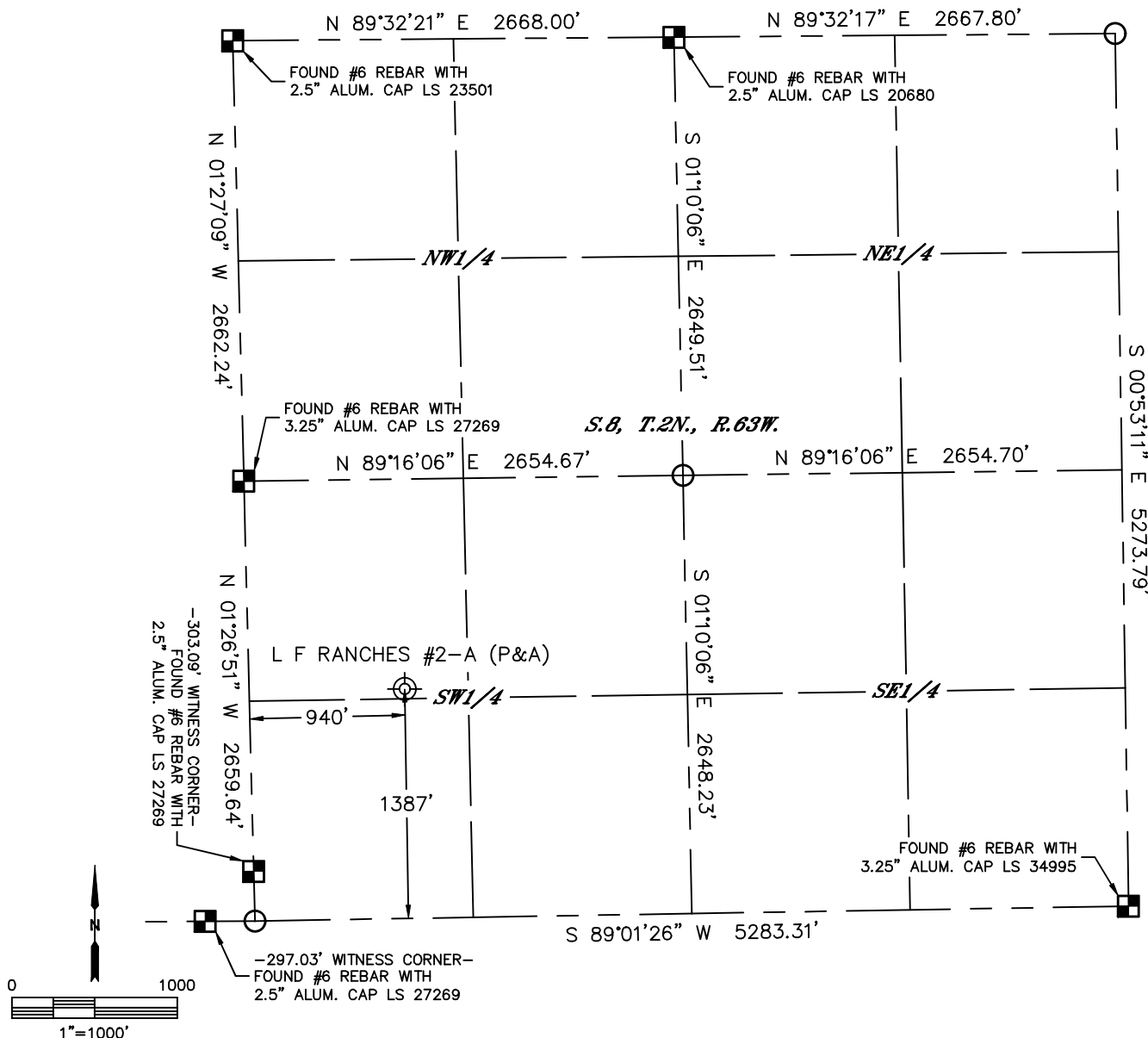


Lat40°, Inc. 6250 W. 10th Street, Unit 2, Greeley, CO 970-515-5294

PLUGGED AND ABANDONED WELL EXHIBIT

L F RANCHES #2-A

SECTION: 8
TOWNSHIP: 2N
RANGE: 63W
6TH. P.M.
WELD COUNTY, CO



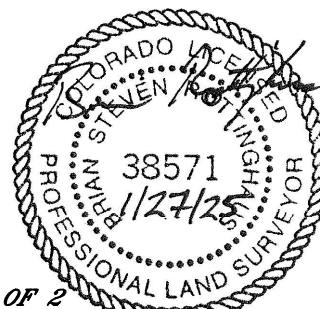
CLIENT: CHEVRON ROCKIES BUSINESS UNIT				LANDMAN: KOLT MCDANIEL			
INSTRUMENT OPERATOR: TIM NEARY				SURVEY DATE: 1/21/2025		SURFACE USE: RANGELAND	
SHL FOOTAGE		SHL LAT °	SHL LONG °	SHL PDOP	SHL ELEV (FT.)	SHL 1/4/1/4	SHL S-T-R
1387	FSL 940 FWL	40.14939	-104.46748	0.9	4842	NWSW	8-2-63
DESCRIPTION: FOUND STRONG METAL DETECTOR RING AT NOTED POSITION. ALSO FOUND OTHER LARGER RINGS 7', 38' AND 71' NORTHEAST OF P&A LOCATION, POSSIBLE OLD FLOWLINE.							

NOTE:

- 1) Bearings shown are Grid Bearings of the Colorado State Plane Coordinate System, North Zone, North American Datum 1983. The lineal dimensions as contained herein are based upon the "U.S. Survey Foot."
- 2) Distances to section lines measured at 90 degrees from said section lines.
- 3) Ground elevations are based on an observed GPS elevation (NAVD 1988 DATUM).
- 4) Latitude and Longitude shown are (NAD 83 DATUM).
- 5) Sectional data as shown hereon is from previous surveys and was not verified for this P&A Exhibit.
- 6) This map does not represent a boundary survey.

LEGEND

- = ALIQUOT MONUMENT AS DESCRIBED
- = CALCULATED POSITION
- ⊙ = ABANDONED WELL



SHEET 1 OF 2

Brian S. Rottinghaus—On behalf of Lat40°, Inc.
Colorado Licensed Professional Land Surveyor No. 38571
DATE: 1/27/2025
PROJECT#: 2025017



Lat40°, Inc. 6250 W. 10th Street, Unit 2, Greeley, CO 970-515-5294

PLUGGED AND ABANDONED WELL EXHIBIT

L F RANCHES #2-A

SECTION: 8
TOWNSHIP: 2N
RANGE: 63W
6TH. P.M.
WELD COUNTY, CO
DATE: 1/21/2025



VIEW NORTH



VIEW SOUTHWEST



VIEW NORTHEAST



VIEW SOUTHEAST