

REMEDIAL EXCAVATION REPORT

WATKINS 12-02 FLOWLINE

ECMC SPILL TRACKING # 483889

ECMC REMEDIATION # 24990

Prepared for:



2115 117th Avenue
Greeley, CO 80631

Prepared by:



6855 W. 119th Ave
Broomfield, CO 80020

Photographic Log

Photo 1 Date&Time: 2024-12-09 11:18

Photo 2 Date&Time: _____



Notes Excavation facing south circled is SS06@1'

Notes Excavation facing east, circled SS07@1'

Photo 3 Date&Time: _____

Photo 4 Date&Time: _____



Notes Excavation facing north circled is SS08@1'

Notes Excavation facing West circled is SS05@1'

Photographic Log

Photo 5 Date&Time: _____

Photo 6 Date&Time: _____



Notes General view of excavation NW

Notes General views of excavation SE

Photo 7 Date&Time: _____

Photo 8 Date&Time: _____



Notes BKG06 collected at 0-6", 1, 2, 3, ft bgs

Notes BKG07 collected at 0-6, 1, 2, 3, ft bgs

Photographic Log

Photo 9 Date&Time: _____

Photo 10 Date&Time: _____



Notes BKG09 collected at 0-6", 1, 2, 3 ft bgs

Notes

Photo 11 Date&Time: _____

Photo 12 Date&Time: _____



Notes Site facing south

Notes Site facing west

Photographic Log

Photo 13 Date&Time: _____

Photo 14 Date&Time: _____



Notes Site facing north

Notes Site facing east

Photo 15 Date&Time: _____

Photo 16 Date&Time: _____



Notes Excavation back fill facing south

Notes Excavation back fill facing north

Photographic Log

Photo 17 Date&Time: _____

Photo 18 Date&Time: _____



Notes Excavation Back fill facing west

Notes FS02@3' base of excavation

Photo 19 Date&Time: _____

Photo 20 Date&Time: _____



Notes

Notes

TABLES

TABLE 1
FIELD DATA SUMMARY TABLE
NOBLE ENERGY, INC. - 100322
WATKINS 12-02 FLOWLINE, WELD COUNTY, COLORADO
REM # 24990

Sample ID	Sample Date	Depth (ft)	GPS Data Latitude/Longitude		PDOP Value	VOC Concentration (ppm)
FL01-A@6'	01/24/23	6	40.325122	-104.505937	1.1	0.1
FL01-J@4'	02/07/23	4	40.325104	-104.499449	0.8	0.2
FL01-K@1'	02/10/23	1	40.325623	-104.499391	NC	0.4
BH01@4'	04/19/23	4	40.325077	-104.499441	2.3	0.1
BH01@8'	04/19/23	8	40.325077	-104.499441	2.3	0.6
FS01@6'	12/06/23	6	40.325099	-104.499444	NC	0.4
SS01@5'	12/06/23	5	40.325118	-104.499456	1.2	0.2
SS02@5'	12/06/23	5	40.325108	-104.499417	1.6	0.1
SS03@5'	12/06/23	5	40.325079	-104.499433	1.6	0.1
SS04@5'	12/06/23	5	40.164558	-104.542010	1.1	0.1
Waste Char.	12/06/23	4	40.165412	-104.540392	0.7	0.0
FS02@3'	12/09/24	3	40.325624	-104.499395	NC	0.1
SS05@1'	12/09/24	1	40.325614	-104.499414	0.9	0.2
SS06@1'	12/09/24	1	40.325599	-104.499383	0.9	0.0
SS07@1'	12/09/24	1	40.325627	-104.499367	0.9	0.1
SS08@1'	12/09/24	1	40.325645	-104.499400	1	0.0
BG01@4'	04/19/23	4	40.324928	-104.499515	2.8	0.5
BG01@8'	04/19/23	8	40.324928	-104.499515	2.8	1.0
BG02@4'	04/19/23	4	40.324957	-104.499417	2.8	0.6
BG02@8'	04/19/23	8	40.324957	-104.499417	2.8	0.4
BG03@4'	04/19/23	4	40.324985	-104.499269	2.7	0.4
BG03@8'	04/19/23	8	40.324985	-104.499269	2.7	0.1
BG04@4'	04/19/23	4	40.325001	-104.499487	2.8	0.2
BG04@8'	04/19/23	8	40.325001	-104.499487	2.8	0.4
BG05@4'	04/19/23	4	40.325032	-104.499346	2.2	0.1
BG05@8'	04/19/23	8	40.325032	-104.499346	2.2	0.3
BKG06@0-6"	12/09/24	0-0.5	40.325787	-104.499569	0.9	0.0
BKG06@1'	12/09/24	1	40.325787	-104.499569	0.9	0.2
BKG06@2	12/09/24	2	40.325787	-104.499569	0.9	0.2
BKG06@3'	12/09/24	3	40.325787	-104.499569	0.9	0.0
BKG07@0-6"	12/09/24	0-0.5	40.325731	-104.499565	0.9	0.1
BKG07@1'	12/09/24	1	40.325731	-104.499565	0.9	0.2
BKG07@2	12/09/24	2	40.325731	-104.499565	0.9	0.0
BKG07@3'	12/09/24	3	40.325731	-104.499565	0.9	0.0
BKG08@0-6"	12/09/24	0-0.5	40.325786	-104.499634	0.8	0.1
BKG08@1'	12/09/24	1	40.325786	-104.499634	0.8	0.1
BKG08@2	12/09/24	2	40.325786	-104.499634	0.8	0.2
BKG08@3'	12/09/24	3	40.325786	-104.499634	0.8	0.0
BKG09@0-6"	12/09/24	0-0.5	40.325696	-104.499581	0.8	0.0
BKG09@1'	12/09/24	1	40.325696	-104.499581	0.8	0.1
BKG09@2	12/09/24	2	40.325696	-104.499581	0.8	0.1
BKG09@3'	12/09/24	3	40.325696	-104.499581	0.8	0.1

1. Global Positioning System (GPS) data is provided in decimal degrees using North American Datum (NAD) 83 UTM Zone 13 North.

2. Volatile organic compound (VOC) concentrations are measured in the field using a photoionization detector (PID).

PDOP = Position Dilution of Precision

ppm = Parts per million

in. = Inches

ft. = Feet

bgs = Below ground surface

NC = Data not collected

Source material characterization sample, excavated and transported off site for disposal.

Material excavated and transported off site for disposal.

TABLE 2
SUMMARY OF VOLATILE ORGANIC SOIL CHEMISTRY DATA
NOBLE ENERGY, INC. - 100322
WATKINS 12-02 FLOWLINE, WELD COUNTY, COLORADO
REM # 24990

Sample ID	Sample Date	Depth (ft)	Benzene (mg/kg)	Toluene (mg/kg)	Ethyl-Benzene (mg/kg)	Xylenes (mg/kg)	1,2,4-Trimethyl-Benzene (mg/kg)	1,3,5-Trimethyl-Benzene (mg/kg)	Naphthalene (mg/kg)	TPH (mg/kg)	TPH GRO (mg/kg)	TPH DRO (mg/kg)	TPH ORO (mg/kg)
ECMC Table 915-1 Limits (Residential SSL)			1.2	490	5.8	58	30	27	2	500	500**		
ECMC Table 915-1 Limits (Protection of Groundwater SSL)			0.0026	0.69	0.78	9.9	0.0081	0.0087	0.0038	500	500**		
FL01-A@6'	01/24/23	6	<0.00200	<0.00200	<0.00200	<0.00200	<0.00200	<0.00200	<0.00201	<50	<0.200	<25.0	<100
FL01-J@4'	02/07/23	4	<0.00200	<0.00200	<0.00200	<0.00200	<0.00200	<0.00200	0.0442	<50	<0.200	<25.0	<100
FL01-K@1'	02/10/23	1	<0.00200	<0.00200	<0.00200	<0.00200	<0.00200	<0.00200	0.00263	565	<0.200	202	363
BH01@4'	04/19/23	4	<0.0020	<0.0050	<0.0050	<0.010	<0.0050	<0.0050	<0.0038	<50	<0.50	<50	<50
BH01@8'	04/19/23	8	<0.0020	<0.0050	<0.0050	<0.010	<0.0050	<0.0050	<0.0038	<50	<0.50	<50	<50
FS01@6'	12/06/23	6	<0.0020	<0.0050	<0.0050	<0.010	<0.0050	<0.0050	<0.0038	<50	<0.50	<50	<50
SS01@5'	12/06/23	5	<0.0020	<0.0050	<0.0050	<0.010	<0.0050	<0.0050	<0.0038	<50	<0.50	<50	<50
SS02@5'	12/06/23	5	<0.0020	<0.0050	<0.0050	<0.010	<0.0050	<0.0050	<0.0038	<50	<0.50	<50	<50
SS03@5'	12/06/23	5	<0.0020	<0.0050	<0.0050	<0.010	<0.0050	<0.0050	<0.0038	<50	<0.50	<50	<50
SS04@5'	12/06/23	5	<0.0020	<0.0050	<0.0050	<0.010	<0.0050	<0.0050	<0.0038	<50	<0.50	<50	<50
Waste Char.	12/06/23	4	<0.0020	<0.0050	<0.0050	<0.010	<0.0050	<0.0050	<0.0038	<50	<0.50	<50	<50
FS02@3'	12/09/24	3	<0.0020	<0.0050	<0.0050	<0.010	<0.0050	<0.0050	<0.0038	<50	<0.50	<50	<50
SS05@1'	12/09/24	1	<0.0020	<0.0050	<0.0050	<0.010	<0.0050	<0.0050	<0.0038	<50	<0.50	<50	<50
SS06@1'	12/09/24	1	<0.0020	<0.0050	<0.0050	<0.010	<0.0050	<0.0050	<0.0038	<50	<0.50	<50	<50
SS07@1'	12/09/24	1	<0.0020	<0.0050	<0.0050	<0.010	<0.0050	<0.0050	<0.0038	<50	<0.50	<50	<50
SS08@1'	12/09/24	1	<0.0020	<0.0050	<0.0050	<0.010	<0.0050	<0.0050	<0.0038	<50	<0.50	<50	<50

1. Bold values exceed the ECMC Table 915-1 limit(s)
 2. Red & blue highlighted soil analytical values indicate an exceedance of the referenced soil screening level (SSL)
 3. * Indicates laboratory minimum detection limit in excess of SSL
 4. ** Summation of GRO+DRO+ORO must be less than 500 mg/kg
- (-) = Analytical result is less than the indicated laboratory reporting limit.
TPH-GRO = Total petroleum hydrocarbons - gasoline range organics
TPH-DRO = Total petroleum hydrocarbons - diesel range organics
TPH-ORO = Total petroleum hydrocarbons - oil range organics
mg/kg = Milligrams per kilogram
ft. = Feet
bgs = Below ground surface

Source material characterization sample, excavated and transported off site for disposal.

Material excavated and transported off site for disposal.

TABLE 3
SUMMARY OF POLYCYCLIC AROMATIC HYDROCARBON SOIL CHEMISTRY DATA
NOBLE ENERGY, INC. - 100322
WATKINS 12-02 FLOWLINE, WELD COUNTY, COLORADO
REM # 24990

Sample ID	Sample Date	Depth (ft)	Acenaphthene (mg/kg)	Anthracene (mg/kg)	Benzo (a) Anthracene (mg/kg)	Benzo (a) Pyrene (mg/kg)	Benzo (b) Fluoranthene (mg/kg)	Benzo (k) Fluoranthene (mg/kg)	Chrysene (mg/kg)	Dibenzo (a,h) Anthracene (mg/kg)	Fluoranthene (mg/kg)	Fluorene (mg/kg)	Indeno (1,2,3-cd) Pyrene (mg/kg)	Pyrene (mg/kg)	1-Methyl - Naphthalene (mg/kg)	2-Methyl - Naphthalene (mg/kg)
ECMC Table 915-1 Limits (Residential SSL)			360	1800	1.1	0.11	1.1	11	110	0.11	240	240	1.1	180	18	24
ECMC Table 915-1 Limits (Protection of Groundwater SSL)			0.55	5.8	0.011	0.24	0.3	2.9	9	0.096	8.9	0.54	0.98	1.3	0.006	0.019
FL01-A@6'	01/24/23	3	<0.00067	<0.00067	<0.00067	<0.00067	<0.00067	<0.00067	<0.00067	<0.00067	<0.00067	<0.00067	<0.00067	<0.00067	<0.00201	<0.00201
FL01-J@4'	02/07/23	4	0.0564	0.156	0.125	0.0748	0.0786	0.0356	0.114	0.00803	0.355	0.0675	0.0213	0.272	0.00945	0.0128
FL01-K@1'	02/10/23	4	0.0199	0.0487	0.0378	0.0232	0.0213	0.0102	0.0354	0.00490	0.108	0.0271	0.00263	0.0735	<0.00201	<0.00201
BH01@4'	04/19/23	2	<0.00500	<0.00500	<0.00500	<0.00500	<0.00500	<0.00500	<0.00500	<0.00500	<0.00500	<0.00500	<0.00500	<0.00500	<0.00500	<0.00500
BH01@8'	04/19/23	3	<0.00500	<0.00500	<0.00500	<0.00500	<0.00500	<0.00500	<0.00500	<0.00500	<0.00500	<0.00500	<0.00500	<0.00500	<0.00500	<0.00500
FS01@6'	12/06/23	3	<0.00500	<0.00500	<0.00500	<0.00500	<0.00500	<0.00500	<0.00500	<0.00500	<0.00500	<0.00500	<0.00500	<0.00500	<0.00500	<0.00500
SS01@5'	12/06/23	2	<0.00500	<0.00500	<0.00500	<0.00500	<0.00500	<0.00500	<0.00500	<0.00500	<0.00500	<0.00500	<0.00500	<0.00500	<0.00500	<0.00500
SS02@5'	12/06/23	3	<0.00500	<0.00500	<0.00500	<0.00500	<0.00500	<0.00500	<0.00500	<0.00500	<0.00500	<0.00500	<0.00500	<0.00500	<0.00500	<0.00500
SS03@5'	12/06/23	3	<0.00500	<0.00500	<0.00500	<0.00500	<0.00500	<0.00500	<0.00500	<0.00500	<0.00500	<0.00500	<0.00500	<0.00500	<0.00500	<0.00500
SS04@5'	12/06/23	2	<0.00500	<0.00500	<0.00500	<0.00500	<0.00500	<0.00500	<0.00500	<0.00500	<0.00500	<0.00500	<0.00500	<0.00500	<0.00500	<0.00500
Waste Char.	12/06/23	4	<0.00500	<0.00500	<0.00500	<0.00500	<0.00500	<0.00500	<0.00500	<0.00500	<0.00500	<0.00500	<0.00500	<0.00500	<0.00500	<0.00500
FS02@3'	12/09/24	3	<0.00500	<0.00500	<0.00500	<0.00500	<0.00500	<0.00500	<0.00500	<0.00500	<0.00500	<0.00500	<0.00500	<0.00500	<0.00500	<0.00500
SS05@1'	12/09/24	1	<0.00500	<0.00500	<0.00500	<0.00500	<0.00500	<0.00500	<0.00500	<0.00500	<0.00500	<0.00500	<0.00500	<0.00500	<0.00500	<0.00500
SS06@1'	12/09/24	1	<0.00500	<0.00500	<0.00500	<0.00500	<0.00500	<0.00500	<0.00500	<0.00500	<0.00500	<0.00500	<0.00500	<0.00500	<0.00500	<0.00500
SS07@1'	12/09/24	1	<0.00500	<0.00500	<0.00500	<0.00500	<0.00500	<0.00500	<0.00500	<0.00500	<0.00500	<0.00500	<0.00500	<0.00500	<0.00500	<0.00500
SS08@1'	12/09/24	1	<0.00500	<0.00500	<0.00500	<0.00500	<0.00500	<0.00500	<0.00500	<0.00500	<0.00500	<0.00500	<0.00500	<0.00500	<0.00500	<0.00500

1. Bold values exceed the ECMC Table 915-1 limit(s)

2. Red & blue highlighted soil analytical values indicate an exceedance of the referenced soil screening level (SSL)

3. * Indicates laboratory minimum detection limit in excess of SSL

4. ** Summation of GRO+DRO+ORO must be less than 500 mg/kg

(<) = Analytical result is less than the indicated laboratory reporting limit.

TPH-GRO = Total petroleum hydrocarbons - gasoline range organics

TPH-DRO = Total petroleum hydrocarbons - diesel range organics

TPH-ORO = Total petroleum hydrocarbons - oil range organics

mg/kg = Milligrams per kilogram

ft. = Feet

bgs = Below ground surface

Source material characterization sample, excavated and transported off site for disposal.

Material excavated and transported off site for disposal.

TABLE 4
SUMMARY OF SOIL SUITABILITY FOR RECLAMATION
NOBLE ENERGY, INC. - 100322
WATKINS 12-02 FLOWLINE, WELD COUNTY, COLORADO
REM # 24990

Sample ID	Sample Date	Depth (ft)	pH (Standard Units)	EC (mmhos/cm)	SAR (Standard Units)	Boron (mg/L)
ECMC Table 915-1 Soil Suitability Limits			6 - 8.3	<4	<6	2
FL01-A@6'	01/24/23	6	7.95	1.57	3.68	0.222
FL01-J@4'	02/07/23	4	8.12	2.04	7.26	0.136
FL01-K@1'	02/10/23	1	8.13	0.251	0.268	0.229
BH01@8'	04/19/23	8	NA	NA	4.38	NA
FS01@6'	12/06/23	6	8.58	1.15	11.6	<2.00
SS01@5'	12/06/23	5	8.94	0.460	3.87	<2.00
SS02@5'	12/06/23	5	9.09	0.906	4.64	<2.00
SS03@5'	12/06/23	5	8.70	1.01	10.3	<2.00
SS04@5'	12/06/23	5	8.34	1.21	8.58	<2.00
Waste Char.	12/06/23	4	9.34	0.742	1.83	<2.00
FS02@3'	12/09/2024	3	6.62	0.0963	0.00701	<2.00
SS05@1'	12/09/2024	1	8.30	0.256	0.0220	<2.00
SS06@1'	12/09/2024	1	8.26	0.0925	0.0270	<2.00
SS07@1'	12/09/2024	1	7.62	0.175	0.0171	<2.00
SS08@1'	12/09/2024	1	8.31	0.240	0.0247	<2.00
BG01@4'	04/19/23	4	NA	NA	7.89	NA
BG01@8'	04/19/23	8	NA	NA	6.30	NA
BG02@4'	04/19/23	4	NA	NA	5.65	NA
BG02@8'	04/19/23	8	NA	NA	4.38	NA
BG03@4'	04/19/23	4	NA	NA	6.37	NA
BG03@8'	04/19/23	8	NA	NA	4.50	NA
BG04@4'	04/19/23	4	NA	NA	3.10	NA
BG04@8'	04/19/23	8	NA	NA	4.83	NA
BG05@4'	04/19/23	4	NA	NA	4.45	NA
BG05@8'	04/19/23	8	NA	NA	3.37	NA
BKG06@1'	12/09/2024	1	7.32	0.125	0.0258	<2.00
BKG06@3'	12/09/2024	3	7.80	0.0701	0.0522	<2.00
BKG07@1'	12/09/2024	1	6.17	0.0620	0.0132	<2.00
BKG07@3'	12/09/2024	3	6.95	0.0604	0.0387	<2.00
BKG08@1'	12/09/2024	1	7.29	0.0560	0.0317	<2.00
BKG08@3'	12/09/2024	3	7.04	0.0632	0.0864	<2.00
BKG09@1'	12/09/2024	1	7.27	0.0476	0.00493	<2.00
BKG09@3'	12/09/2024	3	7.76	0.200	0.0909	<2.00
Maximum Background Concentration			7.80	-	7.89	-

1. **Bold** faced values exceed the ECMC Table 915-1 limit(s), but are within background concentrations.

2. **Bold** faced values exceed the ECMC Table 915-1 limit(s) and native background concentrations.

3. Brown highlighted soil analytical values indicate a regulatory exceedance.

NA - Not analyzed

Source material characterization sample, excavated and transported off site for disposal.

Material excavated and transported off site for disposal.

ECMC = Colorado Energy & Carbon Management Commission

EC = Electrical conductivity

SAR = Sodium adsorption ratio

mmhos/cm = millimhos per centimeter

mg/L = milligram per liter

(<) = Analytical result is less than the indicated laboratory reporting limit.

ft. = Feet

bgs = Below ground surface

TABLE 5
SUMMARY OF METALS IN SOIL CHEMISTRY DATA
NOBLE ENERGY, INC. - 100322
WATKINS 12-02 FLOWLINE, WELD COUNTY, COLORADO
REM # 24990

Sample ID	Sample Date	Depth (ft)	Arsenic (mg/kg)	Barium (mg/kg)	Cadmium (mg/kg)	Chromium (VI) (mg/kg)	Copper (mg/kg)	Lead (mg/kg)	Nickel (mg/kg)	Selenium (mg/kg)	Silver (mg/kg)	Zinc (mg/kg)
ECMC Table 915-1 Limits (Residential SSL)			0.68	15000	71	0.3	3100	400	1500	390	390	23000
ECMC Table 915-1 Limits (Protection of Groundwater SSL)			0.29	82	0.38	0.00067	46	14	26	0.26	0.8	370
BH01@4'	04/19/23	4	1.14	51.4	<0.210	<0.30*	2.72	3.45	2.48	<0.260	<0.0210	10.5
BH01@8'	04/19/23	8	1.44	33.4	<0.210	<0.30*	2.82	4.49	3.54	<0.260	0.0222	11.4
FS01@6'	12/06/23	6	0.647	76.2	<0.200	<0.30*	1.07	4.97	1.46	<0.260	0.0242	5.31
SS01@5'	12/06/23	5	0.510	64.7	<0.200	<0.30*	1.15	3.61	1.29	<0.260	<0.0200	4.80
SS02@5'	12/06/23	5	0.568	50.5	<0.200	<0.30*	1.14	3.54	1.25	<0.260	<0.0200	4.91
SS03@5'	12/06/23	5	0.544	46.1	<0.200	<0.30*	1.18	2.92	1.17	<0.260	<0.0200	4.66
SS04@5'	12/06/23	5	0.435	30.4	<0.200	<0.30*	0.875	2.90	0.989	<0.260	<0.0200	3.80
Waste Char.	12/06/23	4	0.461	36.7	<0.200	<0.30*	1.06	2.37	1.04	<0.260	<0.0200	4.30
FS02@3'	12/09/24	3	1.99	58.0	0.218	<0.30*	4.46	6.61	3.97	<0.260	<0.0200	16.7
SS05@1'	12/09/24	1	2.60	54.5	0.217	<0.30*	4.31	6.52	3.86	<0.260	0.0235	15.5
SS06@1'	12/09/24	1	1.86	37.7	<0.200	<0.30*	3.16	3.49	2.78	<0.260	<0.0200	10.9
SS07@1'	12/09/24	1	1.80	61.1	<0.200	<0.30*	4.22	5.94	3.76	<0.260	0.0241	15.7
SS08@1'	12/09/24	1	1.74	46.8	<0.200	<0.30*	4.09	5.26	3.37	<0.260	0.0209	14.5
BG01@4'	04/19/23	4	0.899	23.7	<0.210	<0.30*	2.77	5.02	2.25	<0.260	<0.0210	9.59
BG01@8'	04/19/23	8	0.838	29.0	<0.208	<0.30*	2.63	2.89	2.15	<0.260	<0.0208	9.45
BG02@4'	04/19/23	4	0.927	31.2	<0.207	<0.30*	2.44	2.81	2.04	<0.260	<0.0207	9.20
BG02@8'	04/19/23	8	1.12	40.4	<0.211	<0.30*	3.25	3.54	2.56	<0.260	<0.0211	11.2
BG03@4'	04/19/23	4	1.36	37.9	<0.205	<0.30*	2.17	3.24	2.84	<0.260	<0.0205	9.46
BG03@8'	04/19/23	8	1.11	26.7	<0.204	<0.30*	2.33	2.47	2.12	<0.260	<0.0204	7.99
BG04@4'	04/19/23	4	0.887	36.5	<0.210	<0.30*	2.33	<0.210	2.12	<0.260	<0.0210	9.37
BG04@8'	04/19/23	8	1.19	39.4	<0.217	<0.30*	3.92	3.56	2.72	<0.260	<0.0217	15.7
BG05@4'	04/19/23	4	1.33	51.2	<0.206	<0.30*	2.20	3.70	2.48	<0.260	<0.0206	9.21
BG05@8'	04/19/23	8	1.40	32.2	<0.206	<0.30*	2.40	2.96	2.55	<0.260	<0.0206	8.77
BKG06@1'	12/09/2024	1	2.24	72.3	<0.200	<0.30*	4.87	7.02	4.47	<0.260	0.0319	17.5
BKG06@3'	12/09/2024	3	1.26	36.1	<0.200	<0.30*	2.99	3.47	2.58	<0.260	<0.0200	10.9
BKG07@1'	12/09/2024	1	2.00	64.0	<0.200	<0.30*	4.26	5.91	4.07	<0.260	0.0231	15.6
BKG07@3'	12/09/2024	3	1.46	46.0	<0.200	<0.30*	3.46	4.31	3.23	<0.260	<0.0200	12.3
BKG08@1'	12/09/2024	1	2.71	74.4	<0.200	<0.30*	5.15	7.07	4.55	<0.260	0.0364	17.1
BKG08@3'	12/09/2024	3	1.15	26.8	<0.200	<0.30*	2.13	2.58	1.85	<0.260	<0.0200	7.81
BKG09@1'	12/09/2024	1	1.57	54.6	<0.200	<0.30*	4.11	5.40	3.31	<0.260	<0.0200	13.1
BKG09@3'	12/09/2024	3	2.27	85.3	<0.200	<0.30*	5.36	6.84	4.34	<0.260	0.0434	17.4
1.25x Maximum Background Concentration			3.39	-	-	-	-	-	-	-	-	-

1. **Bold** faced values exceed the ECMC Table 915-1 limit(s), but are within 1.25x background concentrations.
2. **Bold** faced values exceed the ECMC Table 915-1 limit(s) and native background concentrations.
3. Red & blue highlighted soil analytical values indicate an exceedance of the referenced soil screening level (SSL).
4. Compound falls within ECMC Table 915-1 Footnote 9.
5. Non-detect background results accounted for in the highest background concentration by using the reporting limit.

ECMC = Energy & Carbon Management Commission

(<) = Analytical result is less than the indicated laboratory reporting limit.

mg/kg = Milligrams per kilogram

ft. = Feet

bgs = Below ground surface

* Indicates laboratory minimum detection limit in excess of SSL

NA - Not analyzed

Source material characterization sample, excavated and transported off site for disposal.

Material excavated and transported off site for disposal.

FIGURES

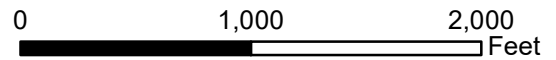
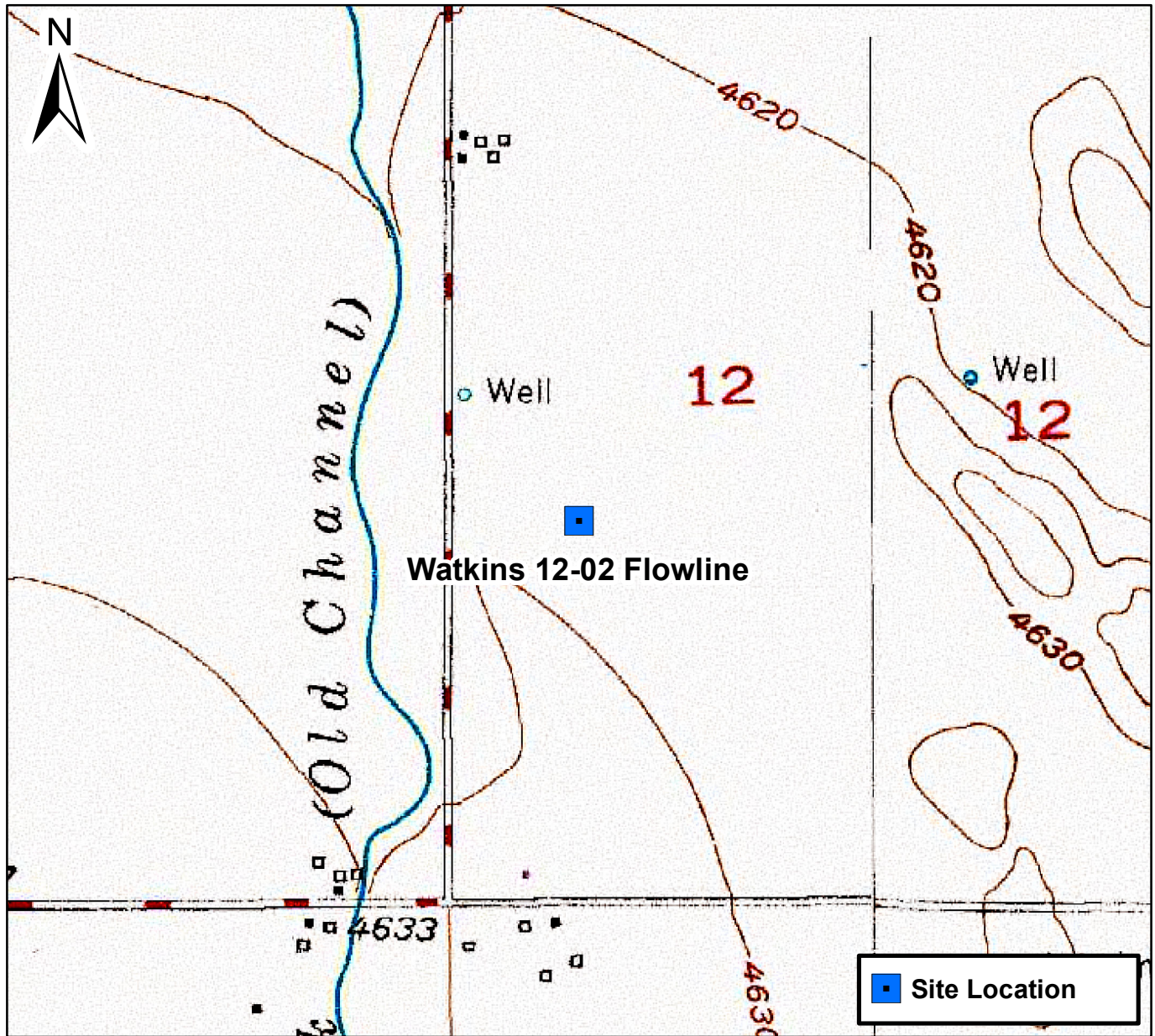


Figure 1

Site Location Map
 Watkins 12-02 Flowline
 NWSW S12 T4N R64W
 Weld County, Colorado





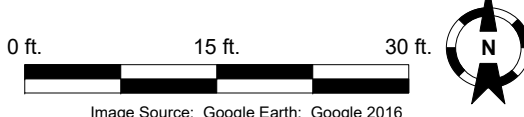
Legend

- + Soil Sample Location – RSSL Exceedance (Collected via Trimble GPS)
- + Soil Sample Location – GSSL Exceedance (Collected via Trimble GPS)
- + Soil Sample Location – Lab Analyzed (Collected via Trimble GPS)
- Noble Flowline
- Excavation Extent (Collected via Trimble GPS)

Notes

- 1) All locations are approximate unless otherwise noted.
- 2) Buried infrastructure has been spatially projected.
- 3) Color coded sample exceedances are in reference to ECOM Table 915-1 Organic Compounds in Soil.

GPS – Global Positioning System
 PID – Photoionization Detector
 ppm – parts per million
 GSSL – Protection of Groundwater Soil Screening Level
 RSSL – Residential Soil Screening Level



DATE: 12/09/2024
 DESIGNED BY: J. Whritenour
 DRAWN BY: S. Krauszer



Noble Energy, Inc. – DJ Basin
Watkins 12-02 Flowline
 NWSW, Section 12, Township 4 North, Range 64 West
 Weld County, Colorado

Excavation Soil Analytical Results Map
 (12/09/2024)

FIGURE 2