



PA Wellbore For State - Vertical

Well Name: ERICKSON A04-05

Original Hole [Land]		Well Header	
MD (ftK B)	Vertical schematic (actual)	Surface UWI 0512323489	Business Unit Rockies
		Gov Auth Dist Land	Prod Tree Loc Land
		Orig. KB to Gnd (ft) 10.00	Original Spud Date 2/11/2006
		Abandon Date	Well Sub-Status PR
		Comment DRILLED & PUSHED CFP to 7160' 4/2006	
		Geologic Horizons	
		Formation Name FOXHILLS-BASE PROD	Final Top MD (ftKB) 496.8
		Formation Name UPPER PIERRE AQUIFER-TOP PROD	Final Top MD (ftKB) 631.6
		Formation Name UPPER PIERRE AQUIFER-BASE PROD	Final Top MD (ftKB) 1,651.4
		Formation Name A SAND-TOP PROD	Final Top MD (ftKB) 2,605.2
		Formation Name PIERRE	Final Top MD (ftKB) 2,977.0
		Formation Name A SAND-BASE PROD	Final Top MD (ftKB) 3,093.0
		Formation Name PARKMAN-TOP PROD	Final Top MD (ftKB) 3,723.4
		Formation Name PARKMAN-BASE PROD	Final Top MD (ftKB) 4,161.0
		Formation Name SUSSEX-TOP PROD	Final Top MD (ftKB) 4,309.5
		Formation Name SUSSEX-BASE PROD	Final Top MD (ftKB) 4,675.3
		Formation Name SHANNON-TOP PROD	Final Top MD (ftKB) 5,089.8
		Formation Name SHANNON-BASE PROD	Final Top MD (ftKB) 5,207.3
		Formation Name TEEPEE BUTTES	Final Top MD (ftKB) 5,998.0
		Formation Name INTRA SHARON SPGS MK	Final Top MD (ftKB) 6,756.3
		Formation Name NIOBRARA-TOP PROD	Final Top MD (ftKB) 6,852.5
		Formation Name FORT HAYS	Final Top MD (ftKB) 7,063.0
		Formation Name CODELL	Final Top MD (ftKB) 7,087.0
		Formation Name CARLILE	Final Top MD (ftKB) 7,099.8
		Formation Name GREENHORN	Final Top MD (ftKB) 7,162.0
		Surface Location (Congressional)	
		Qtr 3 SW	Qtr 4 NW
		Section 4	Twnshp 6
		Twshp... N	Range 64
		Rng E/... W	Latitude (°) 40.51749107
			Longitude (°) -104.561839879
		Wellbore Sections	
		Section Des	Hole Size (in)
		Top Depth (ftKB)	Btm Depth (ftKB)
		SURFACE	12 1/4
		10.0	492.0
		PRODUCTION	7 7/8
		492.0	7,234.0
		Casing Strings	
		Csg Des	Run Date
		OD (in)	Wt/Len (lb/ft)
		Grade	Top Depth (MD) (ftKB)
		Set Depth (MD) (ftKB)	
		Surface	2/11/2006
		8 5/8	24.00
		J-55	10
		481	
		Production Casing	2/15/2006
		4 1/2	11.60
		M-80	10
		7,220.1	
		Cement	
		Des	Start Date
		Top (ftKB)	Btm (ftKB)
		SURFACE CASING CEMENT	2/11/2006
		10.0	481.0
		PRODUCTION CASING CEMENT	2/15/2006
		3,002.0	7,220.1
		Stim/Frac Summary	
		Min Top Depth (ftKB)	Max Btm Depth (ftKB)
		6,785.0	7,097.0
		Min Top Depth (ftKB)	Max Btm Depth (ftKB)
		7,087.0	7,097.0
		Perforations	
		Linked Zone	Date
		Top Depth (ftKB)	Bottom Depth (ftKB)
		NIOBRARA, Original Hole	3/13/2006 00:00
		6,785.0	6,799.0
		Linked Zone	Date
		Top Depth (ftKB)	Bottom Depth (ftKB)
		NIOBRARA, Original Hole	3/13/2006 00:00
		6,908.0	6,926.0



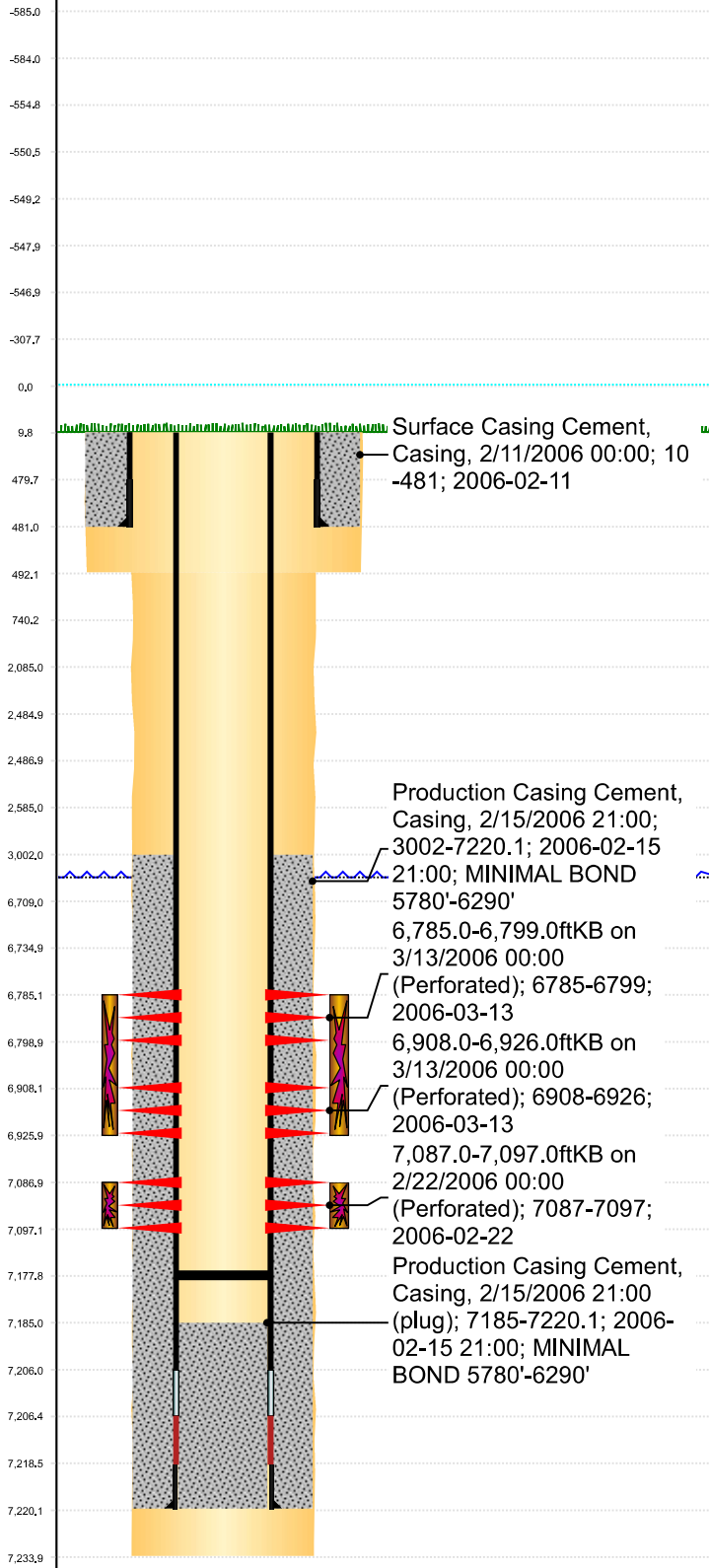
PA Wellbore For State - Vertical

Well Name: ERICKSON A04-05

Original Hole [Land]

MD
(ftK
B)

Vertical schematic (actual)



Surface Casing Cement,
Casing, 2/11/2006 00:00; 10
-481; 2006-02-11

Production Casing Cement,
Casing, 2/15/2006 21:00;
3002-7220.1; 2006-02-15
21:00; MINIMAL BOND
5780'-6290'
6,785.0-6,799.0ftKB on
3/13/2006 00:00
(Perforated); 6785-6799;
2006-03-13
6,908.0-6,926.0ftKB on
3/13/2006 00:00
(Perforated); 6908-6926;
2006-03-13
7,087.0-7,097.0ftKB on
2/22/2006 00:00
(Perforated); 7087-7097;
2006-02-22
Production Casing Cement,
Casing, 2/15/2006 21:00
(plug); 7185-7220.1; 2006-
02-15 21:00; MINIMAL
BOND 5780'-6290'

Perforations

Linked Zone	Date	Top Depth (ftKB)	Bottom Depth (ftKB)
CODELL, Original Hole	2/22/2006 00:00	7,087.0	7,097.0

Other In Hole

Run Date	Des	Make	OD (in)	Top (ftKB)	Btm (ftKB)

Logs

Date	Type	Depth Top (MD) (ftKB)	Btm (ftKB)
2/15/2006	COMPENSATED DENSITY	2,800	7,215.0
2/15/2006	INDUCTION	481	7,235.0
2/22/2006	CBL/CCL/GR	481	7,235.0

Wellbore Plug Back Total Depths

Date	Type	Com	PBTD (ftKB)
4/10/2006	PLUG REMNANTS	FLOW PLUG DRILLED & PUSHED	7,160
9/20/2011	FILL	TESTED IN WITH PRODUCTION TBG, TAGGED & PULLED U...	7,178