

**LEGEND**

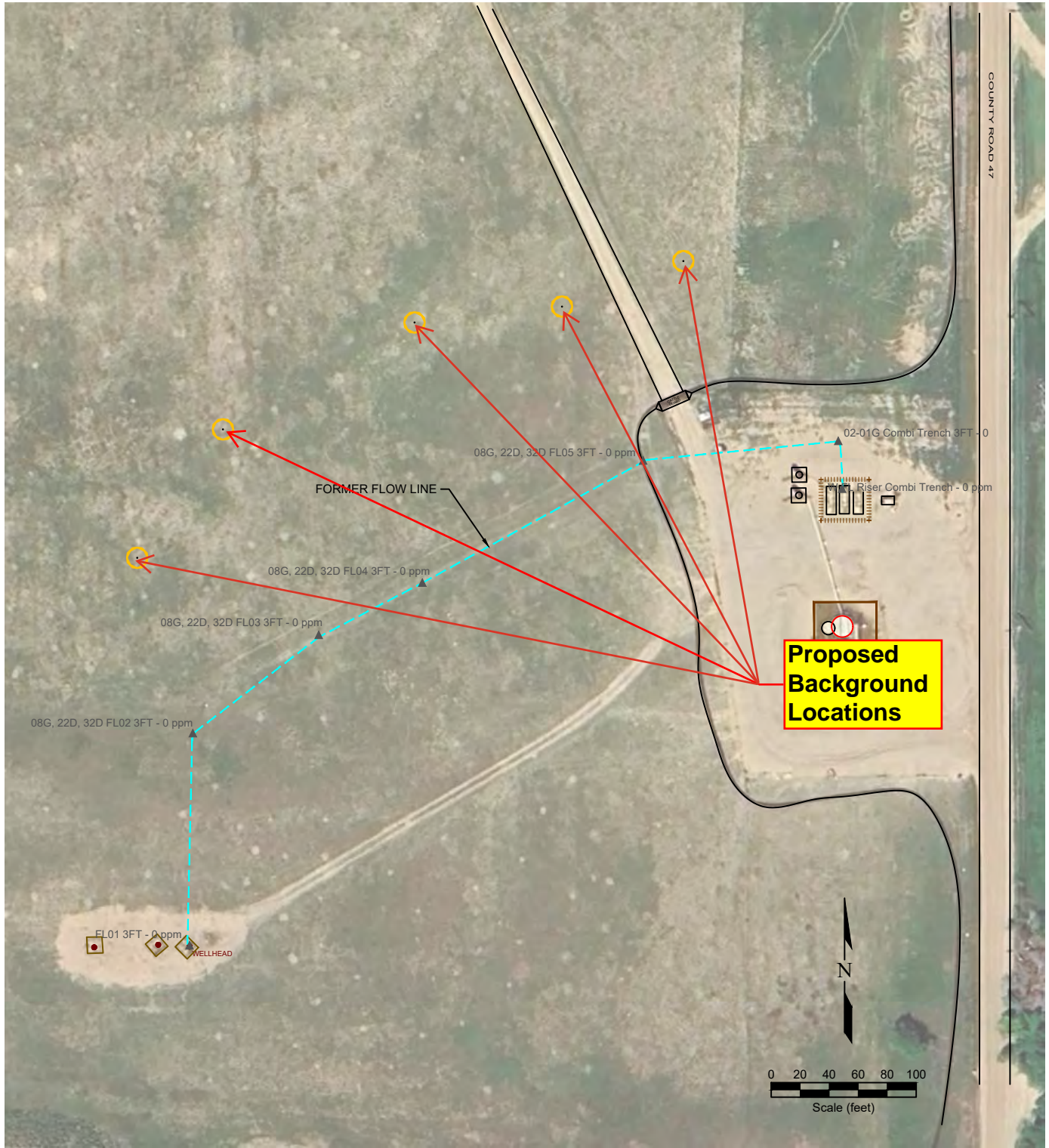
● WELL HEAD LOCATION	○ ABOVE GROUND STORAGE TANK	FORMER FACILITY	FORMER FLOW LINE
▲ PID READING LOCATION		BUILDING	FENCE LINE
			CONTAINMENT BERM
			CONTAINMENT WALL

Figure 1  
**Proposed Re-Sample Site Investigation Plan**  
**NOBLE ~ LOWER LATHAM PC G 01-32D**

SENE Sec. 2, T4N, R65W, 6th PM  
 Weld County, Colorado  
 40.343190°, -104.623060°

Project No. <b>C024-061</b>	API # <b>05-123-33909</b>	Facility #
Date <b>8/13/24</b>	Remediation # <b>33461</b>	Filename <b>24061Q</b>





**LEGEND**

● WELL HEAD LOCATION	○ ABOVE GROUND STORAGE TANK	FORMER FACILITY	FORMER FLOW LINE
▲ PID READING LOCATION		BUILDING	FENCE LINE
			CONTAINMENT BERM
			CONTAINMENT WALL

**Figure 2**  
**Proposed Background Locations**  
**NOBLE ~ LOWER LATHAM PC G 01-32D**

SENE Sec. 2, T4N, R65W, 6th PM  
 Weld County, Colorado  
 40.343190°, -104.623060°

Project No. <b>C024-061</b>	API # <b>05-123-33909</b>	Facility #
Date <b>8/13/24</b>	Remediation # <b>33461</b>	Filename <b>24061Q</b>

