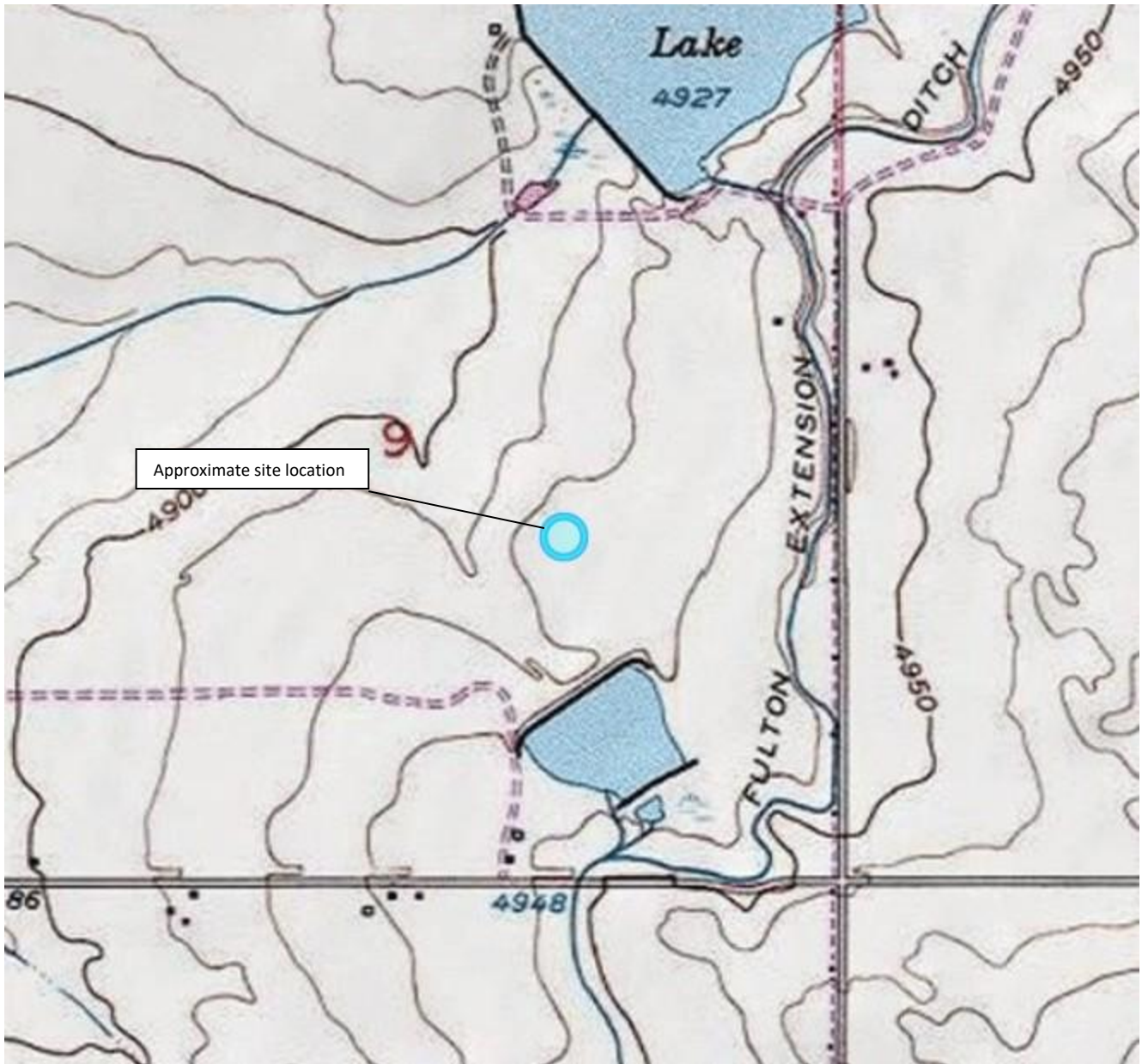


**FIGURE**



**Figure 1**

**Site Location Map**  
**Kerr-McGee Oil and Gas Onshore LP**  
**Aggregate State 24 22 25-9 HZ O SA**  
 NWSE Sec. 9-T2N-R66W  
 Weld County, Colorado



Source: USGS 7.5 Minute Topographic Map, Platteville, CO Quadrangle

Drawn By: AS Date: 01/29/2025



**Legend**

- Approximate release location
- + Approximate soil sample location

**NOTES**

All locations are approximate unless otherwise noted.

Soil and soil vapor screening locations may be adjusted based on field observations.

Additional samples may be collected if impacted soils or groundwater are encountered during closure activities.



IMAGE SOURCE:ESRI



DATE: February 6, 2025

Figure  
2



**EAGLE**  
ENVIRONMENTAL  
CONSULTING, LLC  
8000 W 44th Ave, Wheat Ridge, CO 80033  
Ph: 303-433-0479 • F: 303-325-5449

**Kerr-McGee Oil and Gas Onshore LP**  
**Aggregate State 24 22 25-9 HZ O SA**  
NWSE Sec. 9-T2N-R66W  
Weld County, Colorado

Active Release Sample  
Location Map

**ATTACHMENT A  
TABLES**

TABLE 1  
 AGGREGATE STATE 24 22 25-9HZ O SA  
 SOIL SAMPLE FIELD DATA SUMMARY TABLE  
 KERR-McGEE OIL AND GAS ONSHORE LP

Sample Location	Date	Approximate Depth (feet bgs)	PID (ppm-v)	Visual Observation	Olfactory Observation	Latitude, Longitude	Submitted for Lab Analysis (Y/N)
<i>Soil Samples</i>							
<b>Initial Waste Characterization @ 3"</b>	1/28/2025	0.25	9999	HC Staining	HC Odor	40.15079857882477, -104.778514993115	Y

**Notes:**

bgs = below ground surface

PID = photoionization detector

ppm-v = parts per million by volume

HC = hydrocarbon

**BOLD** = ECMC Table 915-1 exceedances remaining

N/S = No Staining

N/O = No Odor

**TABLE 2**  
**AGGREGATE STATE 24 22 25-9HZ O SA**  
**SOIL SAMPLE RESULTS SUMMARY TABLE - SOIL SUITABILITY FOR RECLAMATION**  
**KERR-McGEE OIL AND GAS ONSHORE LP**

Sample Location	Date	Benzene (mg/kg)	Toluene (mg/kg)	Ethylbenzene (mg/kg)	Total Xylenes (mg/kg)	TPH-GRO (mg/kg)	TPH-DRO (mg/kg)	TPH-ORO (mg/kg)	Naphthalene (mg/kg)	1,2,4-TMB (mg/kg)	1,3,5-TMB (mg/kg)
<i>ECMC standards for soil (mg/kg)</i> <sup>(1)</sup>		<b>0.0026</b>	<b>0.69</b>	<b>0.78</b>	<b>9.9</b>	<b>500</b>			<b>0.0038</b>	<b>0.0081</b>	<b>0.0087</b>
<i>ECMC standards for soil (mg/kg)</i> <sup>(2)</sup>		<b>1.2</b>	<b>490</b>	<b>5.8</b>	<b>58</b>	<b>500</b>			<b>2</b>	<b>30</b>	<b>27</b>
<i>Soil Samples</i>											
Initial Waste Characterization @ 3"	1/28/2025	<b>2.71</b>	<b>49.7</b>	<b>15.0</b>	<b>190</b>	<b>5520</b>	<b>24000</b>	<b>5470</b>	RP	<b>101</b>	<b>36.3</b>

**Notes:**

<sup>(1)</sup> ECMC Table 915-1: Protection of Groundwater Soil Screening Level Concentrations, effective January 15, 2021

<sup>(2)</sup> ECMC Table 915-1: Residential Soil Screening Level Concentrations, effective January 15, 2021

ECMC = Energy and Carbon Management Commission

< = Analytical result is less than the laboratory reporting limit

mg/kg = milligrams per kilogram

RP = Results Pending

Values presented in **BOLD** contained concentrations exceeding ECMC Table 915-1 Cleanup Concentrations

TPH-GRO = Total petroleum hydrocarbons - gasoline range organics

TPH-DRO = Total petroleum hydrocarbons - diesel range organics

TPH-ORO = Total petroleum hydrocarbons - oil range organics

TMB = Trimethylbenzene

**TABLE 3**  
**AGGREGATE STATE 24 22 25-9HZ O SA**  
**SOIL SAMPLE RESULTS SUMMARY TABLE - SOIL SUITABILITY FOR RECLAMATION**  
**KERR-McGEE OIL AND GAS ONSHORE LP**

Sample Location	Date	Depth (ft. bgs)	pH	SAR	EC (mmhos/cm)	Boron (mg/L)
<i>ECMC standards for soil (mg/kg)</i> <sup>(1)</sup>			6 - 8.3	<6	<4	2
<b>Soil Samples</b>						
Initial Waste Characterization @ 3"	1/28/2025	0.25	RP	RP	RP	RP

**Notes:**

<sup>(1)</sup> Standards for soil are taken from ECMC Table 915-1, effective January 15, 2021

ECMC = Energy and Carbon Management Commission

ft. bgs = Feet below ground surface

mmhos/cm = Millimhos per centimeter

mg/L = Milligrams per liter

SAR = Sodium Absorption Ratio

EC = Electrical Conductivity

RP = Results Pending

**TABLE 4**  
**AGGREGATE STATE 24 22 25-9HZ O SA**  
**SOIL SAMPLE RESULTS SUMMARY TABLE - PAHs**  
**KERR-McGEE OIL AND GAS ONSHORE LP**

Sample Location	Date	1-Methyl-naphthalene (mg/kg)	2-Methyl-naphthalene (mg/kg)	Acenaphthene (mg/kg)	Anthracene (mg/kg)	Benzo(a)-anthracene (mg/kg)	Benzo(a)-pyrene (mg/kg)	Benzo(b)-fluoranthene (mg/kg)	Benzo(k)-fluoranthene (mg/kg)	Chrysene (mg/kg)	Dibenzo(a,h)-anthracene (mg/kg)	Fluoranthene (mg/kg)	Fluorene (mg/kg)	Ideno(1,2,3-cd)-pyrene (mg/kg)	Pyrene (mg/kg)
<i>ECMC standards for soil (mg/kg) <sup>(1)</sup></i>		0.006	0.019	0.55	5.8	0.011	0.24	0.3	2.9	9	0.096	8.9	0.54	0.98	1.3
<i>ECMC standards for soil (mg/kg) <sup>(2)</sup></i>		18	24	360	1,800	1.1	0.11	1.1	11	110	0.11	240	240	1.1	180
<b>Soil Samples</b>															
Initial Waste Characterization @ 3"	1/28/2025	RP	RP	RP	RP	RP	RP	RP	RP	RP	RP	RP	RP	RP	RP

**Notes:**

<sup>(1)</sup> Standards are taken from ECMC Table 915-1: Protection of Groundwater Soil Screening Level Concentrations, effective January 15, 2021

<sup>(2)</sup> Standards for soil are taken from ECMC Table 915-1: Residential Soil Screening Level Concentrations, effective January 15, 2021

ECMC = Energy & Carbon Management Commission

mg/kg = milligrams per kilogram

PAH = Polycyclic Aromatic Hydrocarbons

RP = Results Pending

**TABLE 5**  
**AGGREGATE STATE 24 22 25-9HZ O SA**  
**SOIL SAMPLE RESULTS SUMMARY TABLE - METALS**  
**KERR-McGEE OIL AND GAS ONSHORE LP**

Sample Location	Date	Arsenic (mg/kg)	Barium (mg/kg)	Cadmium (mg/kg)	Chromium (VI) (mg/kg)	Copper (mg/kg)	Lead (mg/kg)	Nickel (mg/kg)	Selenium (mg/kg)	Silver (mg/kg)	Zinc (mg/kg)
<i>ECMC standards for soil (mg/kg) <sup>(1)</sup></i>		0.29	82	0.38	0.00067	46	14	26	0.26	0.8	370
<i>ECMC standards for soil (mg/kg) <sup>(2)</sup></i>		0.68	15,000	71	0.3	3,100	400	1,500	390	390	23,000
<b>Soil Samples</b>											
Initial Waste Characterization @ 3"	11/5/2024	<b>2.29</b>	47.0	<0.0919	RP	<9.19	4.35	6.76	<0.239	<0.0919	<34.0

**Notes:**

<sup>(1)</sup> Standards are taken from ECMC Table 915-1: Protection of Groundwater Soil Screening Level Concentrations, effective January 15, 2021

<sup>(2)</sup> Standards for soil are taken from ECMC Table 915-1: Residential Soil Screening Level Concentrations, effective January 15, 2021

ECMC = Energy and Carbon Management Commission

mg/kg = milligrams per kilogram

RP = Results Pending

Values presented in **BOLD** contained concentrations exceeding ECMC Table 915-1 Cleanup Concentrations and background concentrations.



**ATTACHMENT B  
STATE NOTIFICATION**

**From:** Bartoszek, Jaron <Jaron\_Bartoszek@oxy.com>

**Sent:** Tuesday, January 28, 2025 1:24 PM

**To:** Kari.oakman@state.co.us <kari.oakman@state.co.us>; Roy Rudisill <rrudisill@weld.gov>; rburton@weld.gov <rburton@weld.gov>; bcavanagh@weld.gov <bcavanagh@weld.gov>

**Cc:** Scranton, Lynna <Lynna\_Scranton@oxy.com>; Mickelson, Erik <Erik\_Mickelson@oxy.com>; Rowley, Taylor <Taylor\_Rowley@oxy.com>; Lytle, Andy <Andrew\_Lytle@oxy.com>; Lubniewski, Jason <Jason\_Lubniewski@oxy.com>; Jobe, Don <Don\_Jobe@oxy.com>; Grage, Mark <Mark\_Grage@oxy.com>; Brice, Jennifer <Jennifer\_Brice@oxy.com>; Neely, Dewey (Platteville) <Dewey\_Neely2@oxy.com>; Coleman, Julie <Julie\_Coleman@oxy.com>; Riemer, Joseph <Joseph\_Riemer@oxy.com>; Wells, Matt <Matthew\_Wells@oxy.com>; Mathes, Robert <Robert\_Mathes@oxy.com>; Ochoa, Ariana <Ariana\_Ochoa@oxy.com>; Bugarin, Eve M <Eve\_Bugarin@oxy.com>; Kiel, Macy <Macy\_Kiel@oxy.com>; Bartoszek, Jaron <Jaron\_Bartoszek@oxy.com>

**Subject:** State Reportable Release 24 Hour Notification - AGGREGATE STATE 24 22 25-9 HZ

Good afternoon,

We identified a state reportable release following the removal of more than 10 cubic yards of potentially impacted soil. The release was caused by a dump line failure at a separator. The release has been controlled and a Form 19 Release Report is forthcoming. This release did not threaten Waters of the State, Public Water System, residences or occupied structures, livestock, wildlife, air quality, or publicly-maintained roads.

The following have been notified via specified method below:

- Weld County contacted via electronic mail
- Surface Owner notification in process

The Environmental Release/Incident Report Hotline and Colorado Parks and Wildlife were not contacted as this release did not trigger notification requirements per 912.b.(2)B.

Location Details:

- Facility Name: AGGREGATE STATE 24 22 25-9 HZ O SA
- Location: NWSE 9 2N 66W
- Latitude/Longitude: 40.150810, -104.778527
- Facility ID: 435886

Please let me know if you have any questions.

Thank you,

**Jaron Bartoszek, Environmental Advisor**

HSE Rockies, Occidental Petroleum Corporation

| Mobile 970.515.0055 | Platteville, CO 80651

Zero In™ at [oxy.com](http://oxy.com)

**ATTACHMENT C  
PHOTO  
DOCUMENTATION**

## Tank Battery Closure Checklist 2

Additional Attachments (Optional)

Site Name & COGCC Facility Number	Aggregate State 24 22 25-9HZ O SA
Remediation Project #	
Date	01/28/2025

### Site Information

Associated Wells	
Location	
Latitude	40.15081
Longitude	-104.778527
General Condition of Site	Active Release/Active Facility
USCS Soil Type	Gravelly Sandy Loam / Gravelly Sandy Loam
Estimated Depth to Groundwater	
Hydrocarbon Impacted Soils / Spills	Hydrocarbon Spill Observed
Salt Crusted Soils or Impacted Vegetation	None observed

### Soil Samples

#	Sample Date	Sample Time	Soil Sample ID	PID Readings	Visual	Olfactory	Equipment Type
R1	01/28/2025	02:10 PM	Initial Waste Characterization@3"	9999	HC Staining	HC Odor	Separator

Photo(s)

R1 - P1



facing north

Other observations regarding tanks

### Summary

Was impacted soil identified?	Yes - less than 10 cubic yards
-------------------------------	--------------------------------

Total number of soil samples field screened	1
Total number of soil samples collected	1
Highest PID Reading	9999
Total number of soil samples submitted to lab for analysis	1
Was groundwater encountered during the investigation?	No
Measured depth to groundwater	
Was remedial groundwater removal conducted?	
Date Groundwater was encountered	
Commencement date of removal	
Sheen on groundwater?	
Free product observed?	
Volume of groundwater removed prior to sampling	
Volume of groundwater removed post sampling	
Total volume of groundwater removed	
Total number of groundwater samples collected	
Total number of groundwater samples submitted to lab for analysis	