

## **FIGURES**

**Figure 1: Topographic Site Location Map**

**Figure 2: Aerial Site Location Map**

**Figure 3: Source Excavation Soil Sample Location Map**

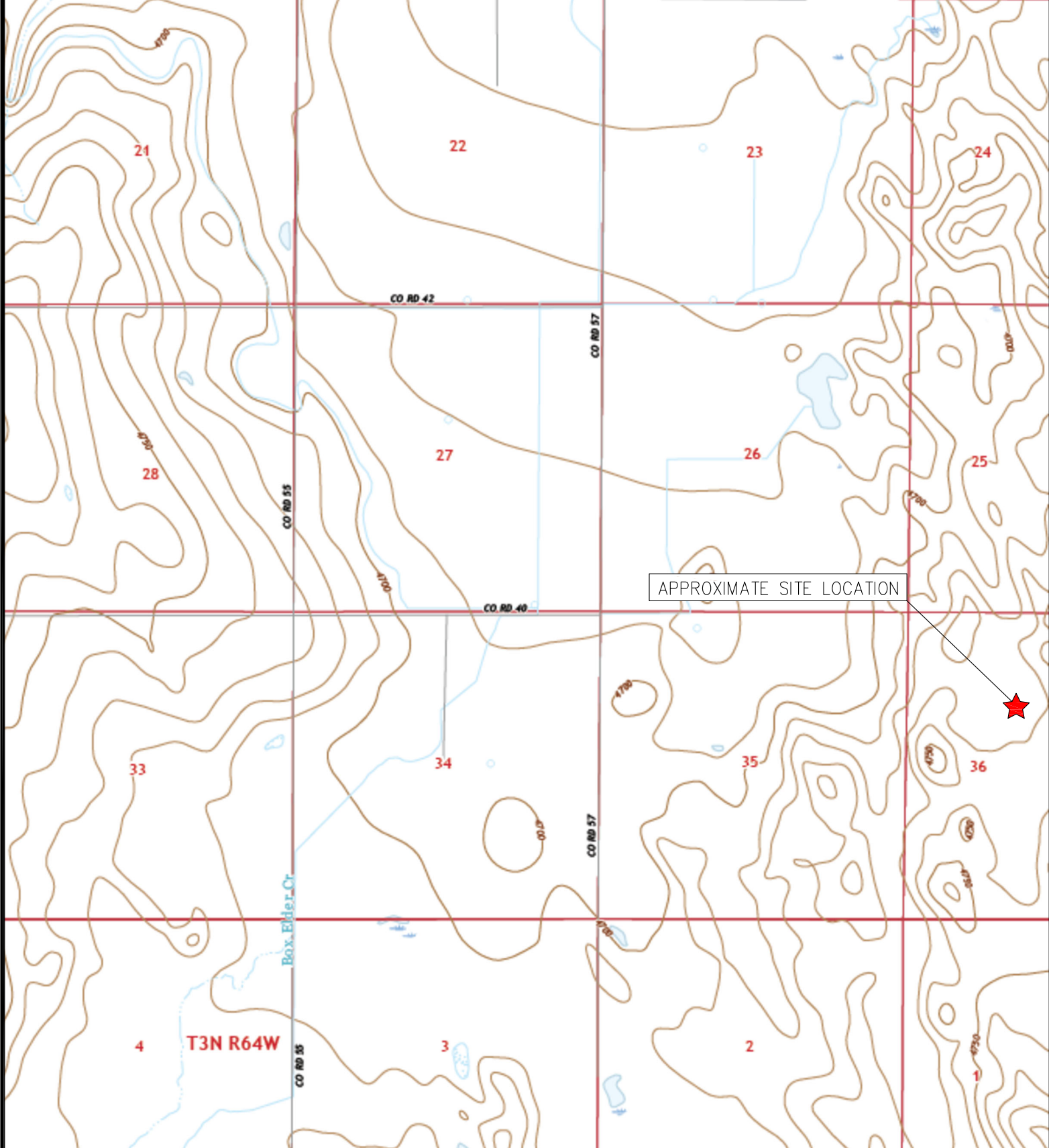
**Figure 4: Source Excavation Soil Analytical Map**

**Figure 5: Background Soil Analytical Map**

**Figure 6: Source Excavation Metals in Soil Map (1)**

**Figure 7: Source Excavation Metals in Soil Map (2)**

**Figure 8: Background Metals in Soil Map**



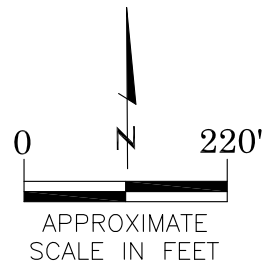
TOPOGRAPHIC SITE LOCATION MAP  
 STATE #36-614  
 HISTORICAL RELEASE  
 40.271320 / -104.501620  
 SE¼ NW¼ SEC.36 T4N R64W 6PM  
 WELD COUNTY, COLORADO  
 API # 05-123-17797  
 REMEDIATION # 28208





LEGEND

- FORMER STATE #36-614 WELLHEAD (PLUGGED AND ABANDONED)
- ASSOCIATED SEPARATOR
- APPROXIMATE FLOWLINE LOCATION (REMOVED)



AERIAL SITE LOCATION MAP  
STATE #36-614  
HISTORICAL RELEASE  
40.271320 / -104.501620  
SE¼ NW¼ SEC.36 T4N R64W 6PM  
WELD COUNTY, COLORADO  
API # 05-123-17797  
REMEDATION # 28208

FIGURE NO.

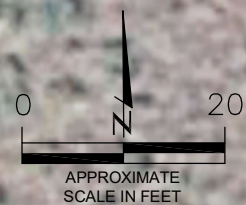
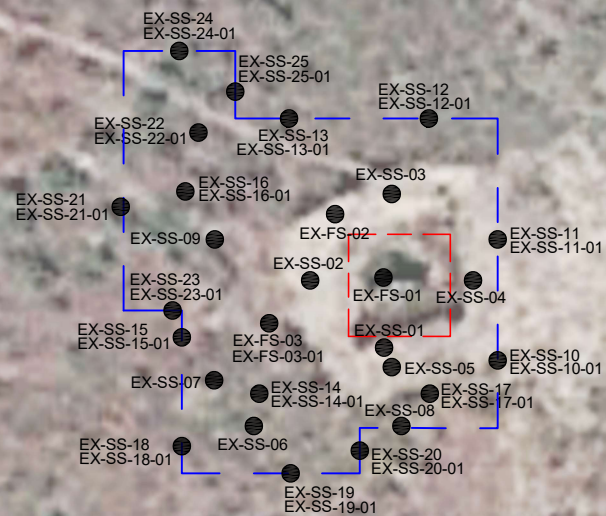
2

DRAWN BY:

ZM

LEGEND

- INITIAL ASSESSMENT BOUNDARIES
- APPROXIMATE EXCAVATION BOUNDARIES
- APPROXIMATE LOCATION OF SOIL SAMPLES SUBMITTED FOR LABORATORY ANALYSIS



SOURCE EXCAVATION SOIL SAMPLE LOCATION MAP  
STATE #36-614  
HISTORICAL RELEASE  
40.271320 / -104.501620  
SE¼ NW¼ SEC.36 T4N R64W 6PM  
WELD COUNTY, COLORADO  
API # 05-123-17797  
REMEDATION # 28208

FIGURE NO.

3

DRAWN BY:

ZM

**LEGEND**

- — INITIAL ASSESSMENT BOUNDARIES
- — APPROXIMATE EXCAVATION BOUNDARIES
- APPROXIMATE LOCATION OF SOIL SAMPLES SUBMITTED FOR LABORATORY ANALYSIS

**PARAMETERS**

**SAMPLE LOCATION**  
 DATE  
 DEPTH (FEET)  
 B = BENZENE (mg/kg)  
 T = TOLUENE (mg/kg)  
 E = ETHYLBENZENE (mg/kg)  
 X = TOTAL XYLENES (mg/kg)  
 N = NAPHTHALENE (mg/kg)  
 G = TPH-GRO (mg/kg)  
 D = TPH-DRO (mg/kg)  
 R = TPH-RRO (mg/kg)  
 1,2,4-TMB = 1,2,4 TRIMETHYLBENZENE (mg/kg)  
 1,3,5-TMB = 1,3,5 TRIMETHYLBENZENE (mg/kg)  
 Brn= BORON (mg/L)  
 EC = SPECIFIC CONDUCTANCE (mmhos/cm)  
 SAR= SODIUM ADSORPTION RATIO  
 pH = pH (pH UNITS)

mg/kg = MILLIGRAMS PER KILOGRAM  
 mg/L = MILLIGRAMS PER LITER  
 mmhos/cm = MILLIMHOS PER CENTIMETER

TPH-GRO = TOTAL PETROLEUM HYDROCARBONS - GASOLINE RANGE ORGANICS  
 TPH-DRO = TOTAL PETROLEUM HYDROCARBONS - DIESEL RANGE ORGANICS  
 TPH-RRO = TOTAL PETROLEUM HYDROCARBONS - RESIDUAL RANGE ORGANICS

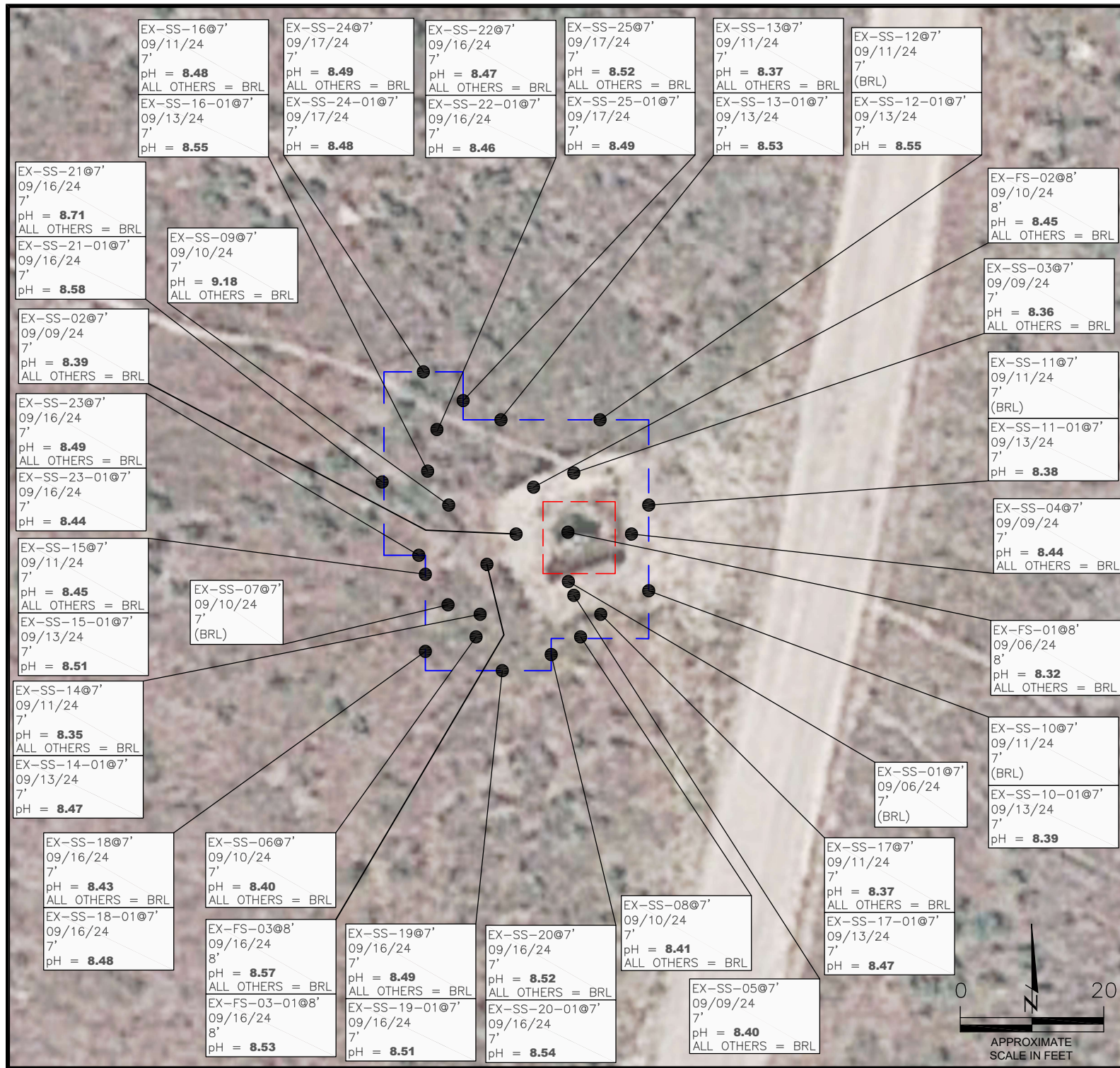
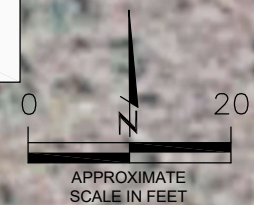
NOTES:  
 VALUES PRESENTED IN **BOLD** EXCEED ECMC TABLE 915-1 REGULATORY LIMITS.

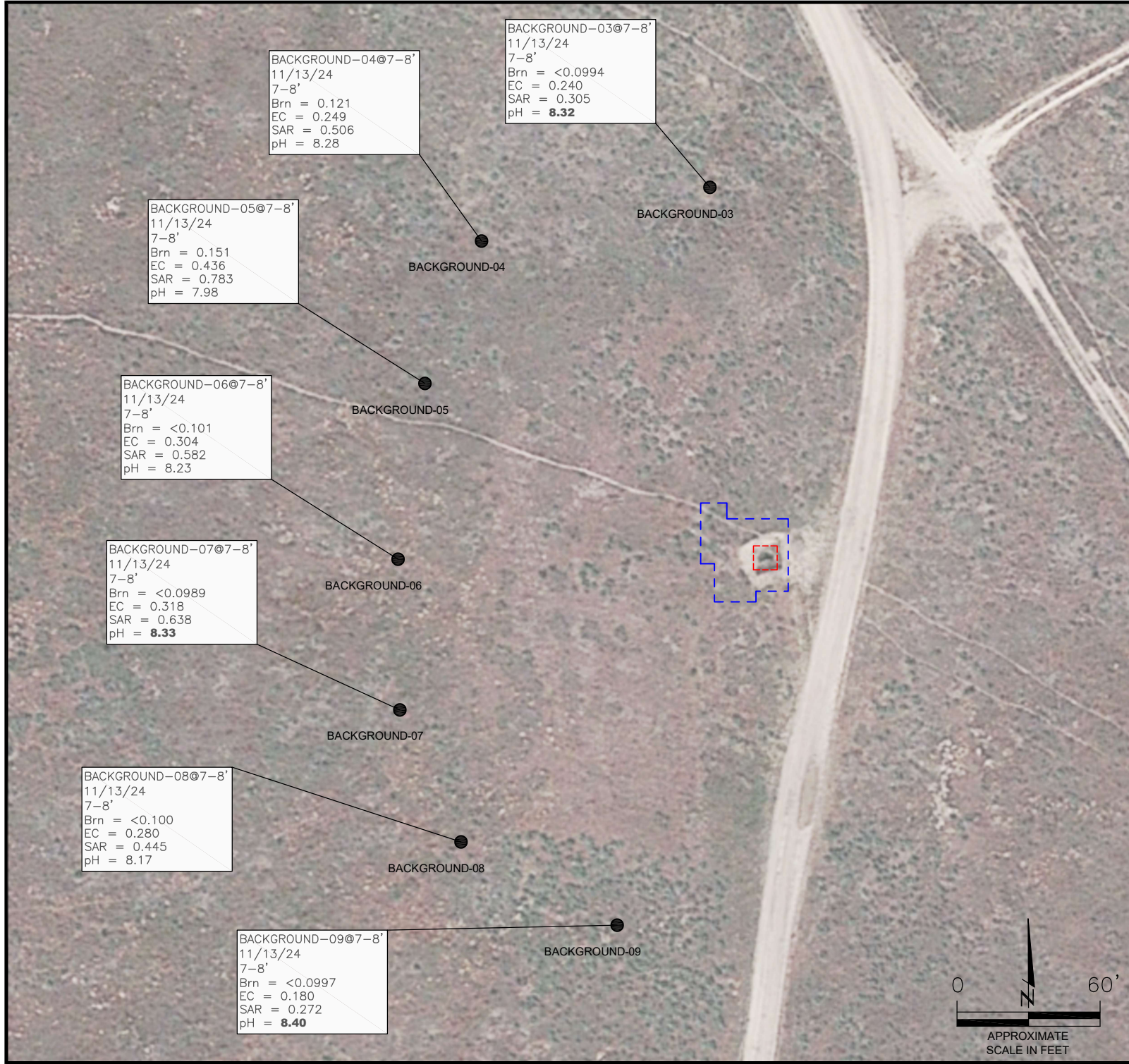
ECMC = ENERGY & CARBON MANAGEMENT COMMISSION

**SOURCE EXCAVATION SOIL ANALYTICAL MAP**  
 STATE #36-614  
 HISTORICAL RELEASE  
 40.271320 / -104.501620  
 SE¼ NW¼ SEC.36 T4N R64W 6PM  
 WELD COUNTY, COLORADO  
 API # 05-123-17797  
 REMEDIATION # 28208

FIGURE NO.  
4

DRAWN BY:  
ZM





BACKGROUND-04@7-8'  
11/13/24  
7-8'  
Brn = 0.121  
EC = 0.249  
SAR = 0.506  
pH = 8.28

BACKGROUND-03@7-8'  
11/13/24  
7-8'  
Brn = <0.0994  
EC = 0.240  
SAR = 0.305  
pH = **8.32**

BACKGROUND-05@7-8'  
11/13/24  
7-8'  
Brn = 0.151  
EC = 0.436  
SAR = 0.783  
pH = 7.98

BACKGROUND-06@7-8'  
11/13/24  
7-8'  
Brn = <0.101  
EC = 0.304  
SAR = 0.582  
pH = 8.23

BACKGROUND-07@7-8'  
11/13/24  
7-8'  
Brn = <0.0989  
EC = 0.318  
SAR = 0.638  
pH = **8.33**

BACKGROUND-08@7-8'  
11/13/24  
7-8'  
Brn = <0.100  
EC = 0.280  
SAR = 0.445  
pH = 8.17

BACKGROUND-09@7-8'  
11/13/24  
7-8'  
Brn = <0.0997  
EC = 0.180  
SAR = 0.272  
pH = **8.40**

- LEGEND**
- INITIAL ASSESSMENT BOUNDARIES
  - APPROXIMATE EXCAVATION BOUNDARIES
  - APPROXIMATE LOCATION OF SOIL SAMPLES SUBMITTED FOR LABORATORY ANALYSIS

**PARAMETERS**

SAMPLE LOCATION  
DATE  
DEPTH (FEET)  
Brn= BORON (mg/L)  
EC = SPECIFIC CONDUCTANCE (mmhos/cm)  
SAR= SODIUM ADSORPTION RATIO  
pH = pH (pH UNITS)

mg/kg = MILLIGRAMS PER KILOGRAM  
mg/L = MILLIGRAMS PER LITER  
mmhos/cm = MILLIMHOS PER CENTIMETER

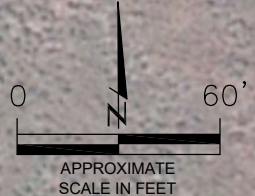
TPH-GRO = TOTAL PETROLEUM HYDROCARBONS - GASOLINE RANGE ORGANICS  
TPH-DRO = TOTAL PETROLEUM HYDROCARBONS - DIESEL RANGE ORGANICS  
TPH-RRO = TOTAL PETROLEUM HYDROCARBONS - RESIDUAL RANGE ORGANICS

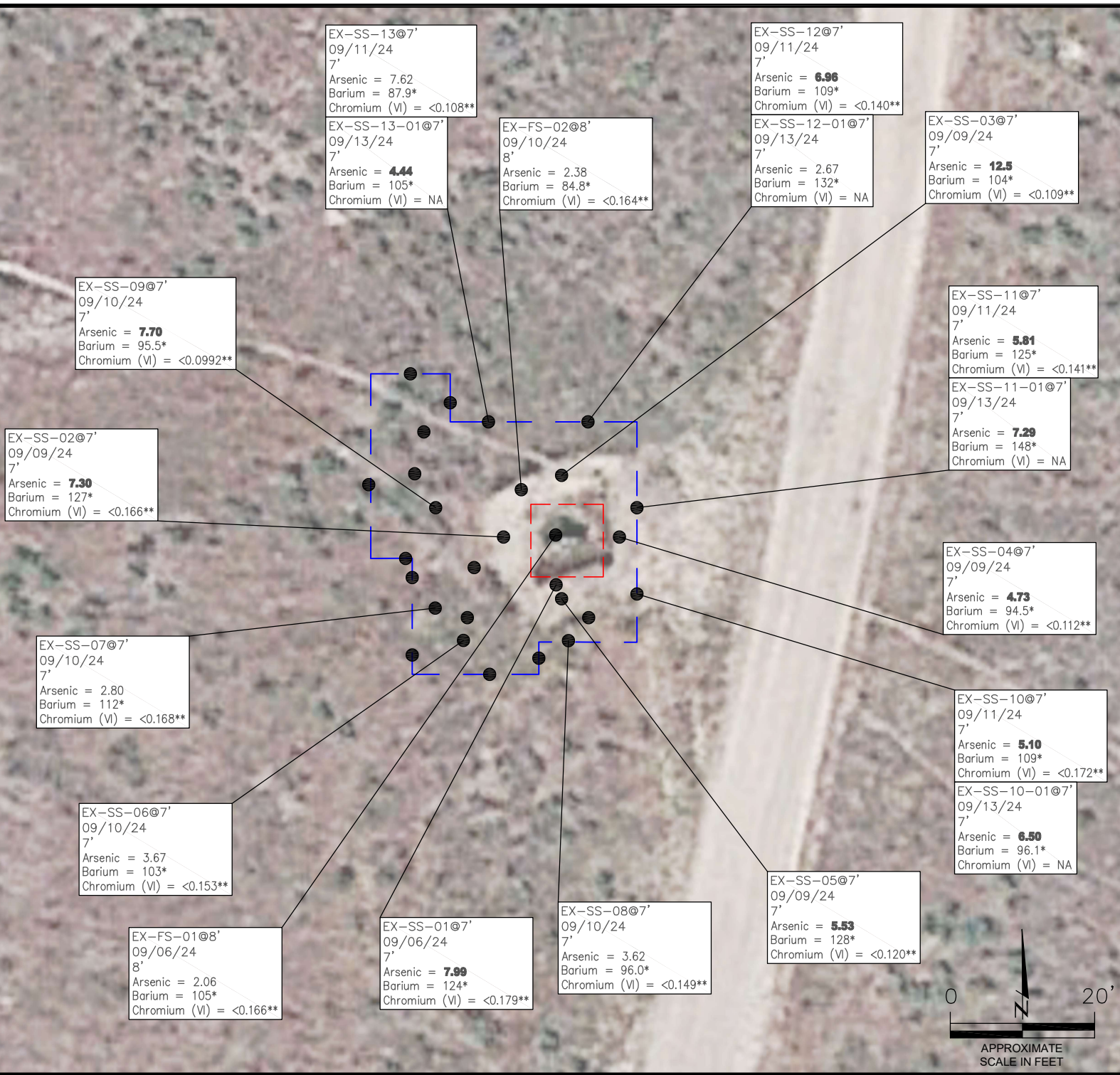
NOTES:  
VALUES PRESENTED IN **BOLD** EXCEED ECOM TABLE 915-1 REGULATORY LIMITS.

ECMC = ENERGY & CARBON MANAGEMENT COMMISSION

**BACKGROUND SOIL ANALYTICAL MAP**  
STATE #36-614  
HISTORICAL RELEASE  
40.271320 / -104.501620  
SE¼ NW¼ SEC.36 T4N R64W 6PM  
WELD COUNTY, COLORADO  
API # 05-123-17797  
REMEDATION # 28208

FIGURE NO. 5  
DRAWN BY: ZM





**LEGEND**

- INITIAL ASSESSMENT BOUNDARIES
- APPROXIMATE EXCAVATION BOUNDARIES
- APPROXIMATE LOCATION OF SOIL SAMPLES SUBMITTED FOR LABORATORY ANALYSIS

**PARAMETERS**

SAMPLE LOCATION  
DATE SAMPLE COLLECTED  
APPROXIMATE DEPTH  
Arsenic = (mg/kg)  
Barium = (mg/kg)  
Chromium (VI) = (mg/kg)

mg/kg = MILLIGRAMS PER KILOGRAM

NA - NOT ANALYZED

**NOTES:**

VALUES PRESENTED WITH A LESS THAN SYMBOL (<) DID NOT CONTAIN CONCENTRATIONS AT/OR ABOVE LABORATORY REPORTING LIMITS AND/OR MINIMUM DETECTION LIMITS.

VALUES PRESENTED IN **BOLD** EXCEED ECMC TABLE 915-1 REGULATORY LIMITS.

\*VALUES EXCEED ECMC TABLE 915-1 PROTECTION OF GROUNDWATER SOIL SCREENING LEVELS, ONLY.

\*\*ACHIEVABLE PRACTICAL QUANTITATIVE LIMITS FOR HEXAVALENT CHROMIUM (Cr VI) IN SOILS IS IN THE RANGE OF 0.1 TO 1 mg/kg.

ELEVATED METALS ARE NATURALLY OCCURRING IN COLORADO. LOCAL CLEAN-UP LEVELS ARE 1.25\*BACKGROUND HIGH @ THAT DEPTH, WHERE APPLICABLE.

ECMC = ENERGY & CARBON MANAGEMENT COMMISSION

SOURCE EXCAVATION METALS IN SOIL MAP(1)  
STATE #36-614  
HISTORICAL RELEASE  
40.271320 / -104.501620  
SE¼ NW¼ SEC.36 T4N R64W 6PM  
WELD COUNTY, COLORADO  
API # 05-123-17797  
REMEDATION # 28208

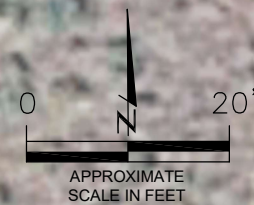


FIGURE NO.  
6  
DRAWN BY:  
ZM

**LEGEND**

- INITIAL ASSESSMENT BOUNDARIES
- APPROXIMATE EXCAVATION BOUNDARIES
- APPROXIMATE LOCATION OF SOIL SAMPLES SUBMITTED FOR LABORATORY ANALYSIS

**PARAMETERS**

SAMPLE LOCATION  
DATE SAMPLE COLLECTED  
APPROXIMATE DEPTH  
Arsenic = (mg/kg)  
Barium = (mg/kg)  
Chromium (VI) = (mg/kg)

mg/kg = MILLIGRAMS PER KILOGRAM

NA - NOT ANALYZED

**NOTES:**

VALUES PRESENTED WITH A LESS THAN SYMBOL (<) DID NOT CONTAIN CONCENTRATIONS AT/OR ABOVE LABORATORY REPORTING LIMITS AND/OR MINIMUM DETECTION LIMITS.

VALUES PRESENTED IN **BOLD** EXCEED ECMC TABLE 915-1 REGULATORY LIMITS.

\*VALUES EXCEED ECMC TABLE 915-1 PROTECTION OF GROUNDWATER SOIL SCREENING LEVELS, ONLY.

\*\*ACHIEVABLE PRACTICAL QUANTITATIVE LIMITS FOR HEXAVALENT CHROMIUM (Cr VI) IN SOILS IS IN THE RANGE OF 0.1 TO 1 mg/kg.

ELEVATED METALS ARE NATURALLY OCCURRING IN COLORADO. LOCAL CLEAN-UP LEVELS ARE 1.25\*BACKGROUND HIGH @ THAT DEPTH, WHERE APPLICABLE.

ECMC = ENERGY & CARBON MANAGEMENT COMMISSION

**SOURCE EXCAVATION METALS IN SOIL MAP(2)**

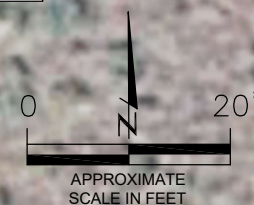
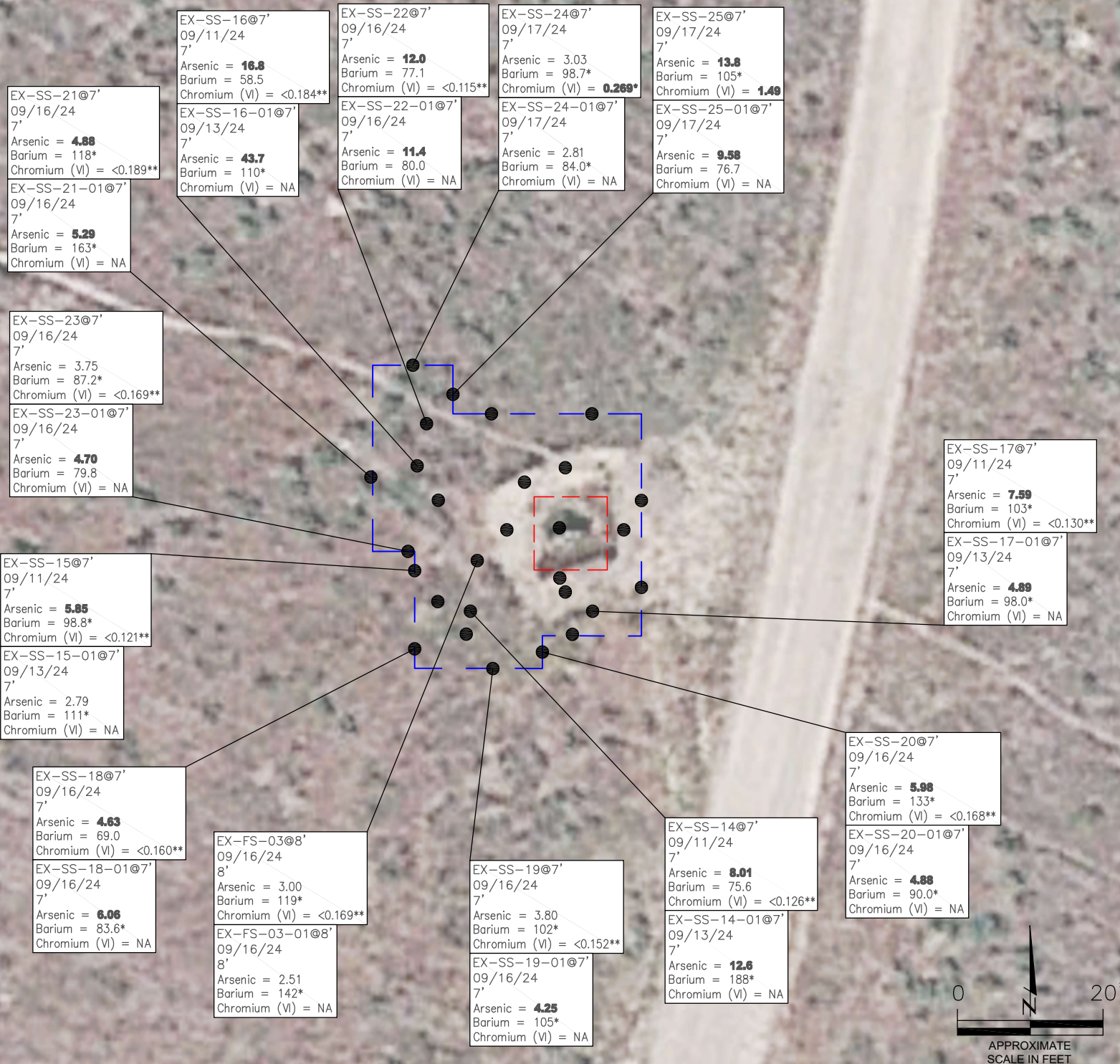
STATE #36-614  
HISTORICAL RELEASE  
40.271320 / -104.501620  
SE¼ NW¼ SEC.36 T4N R64W 6PM  
WELD COUNTY, COLORADO  
API # 05-123-17797  
REMEDATION # 28208

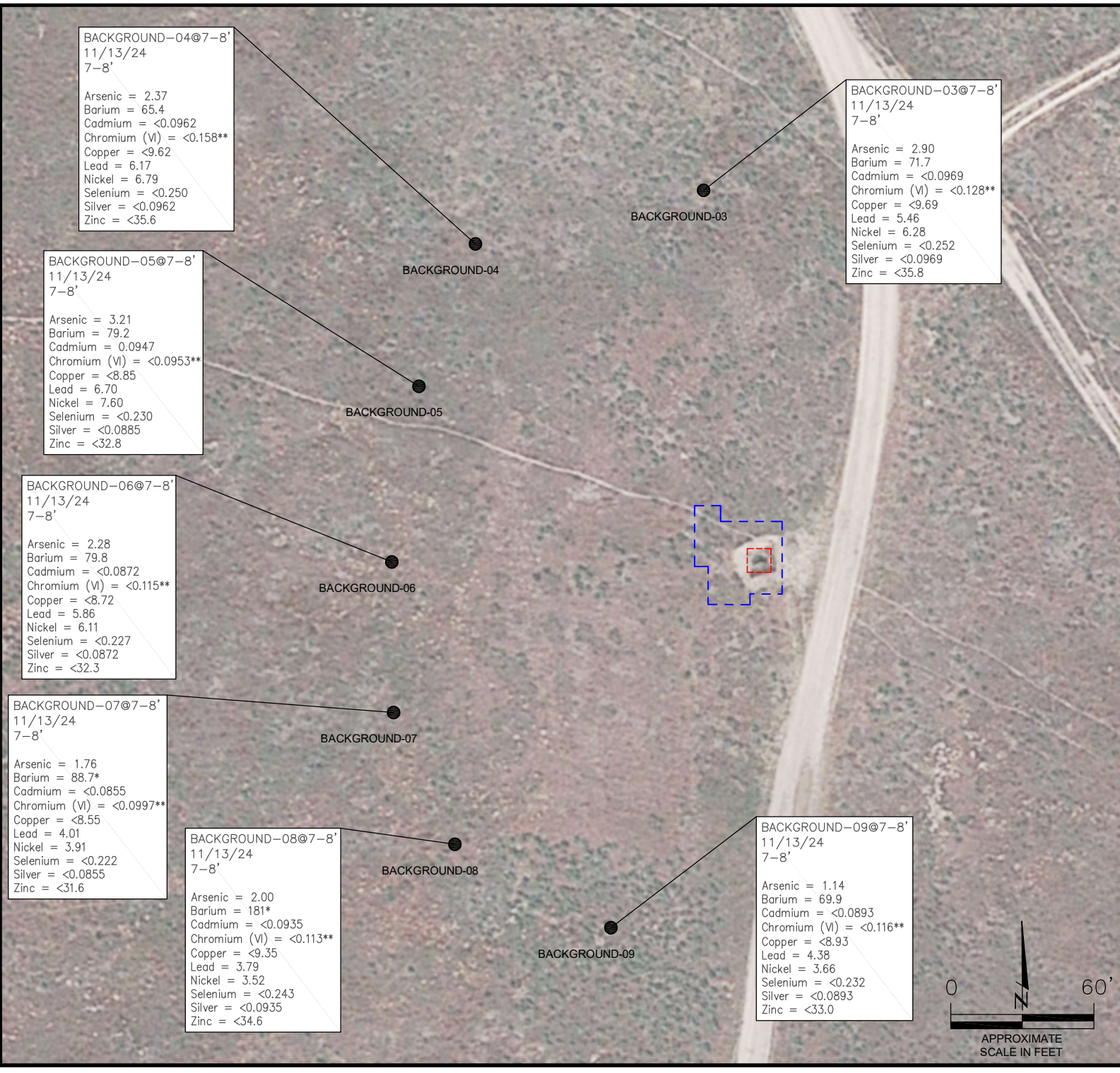
FIGURE NO.

7

DRAWN BY:

ZM





BACKGROUND-04@7-8'  
11/13/24  
7-8'

Arsenic = 2.37  
Barium = 65.4  
Cadmium = <0.0962  
Chromium (VI) = <0.158\*\*  
Copper = <9.62  
Lead = 6.17  
Nickel = 6.79  
Selenium = <0.250  
Silver = <0.0962  
Zinc = <35.6

BACKGROUND-03@7-8'  
11/13/24  
7-8'

Arsenic = 2.90  
Barium = 71.7  
Cadmium = <0.0969  
Chromium (VI) = <0.128\*\*  
Copper = <9.69  
Lead = 5.46  
Nickel = 6.28  
Selenium = <0.252  
Silver = <0.0969  
Zinc = <35.8

BACKGROUND-05@7-8'  
11/13/24  
7-8'

Arsenic = 3.21  
Barium = 79.2  
Cadmium = 0.0947  
Chromium (VI) = <0.0953\*\*  
Copper = <8.85  
Lead = 6.70  
Nickel = 7.60  
Selenium = <0.230  
Silver = <0.0885  
Zinc = <32.8

BACKGROUND-06@7-8'  
11/13/24  
7-8'

Arsenic = 2.28  
Barium = 79.8  
Cadmium = <0.0872  
Chromium (VI) = <0.115\*\*  
Copper = <8.72  
Lead = 5.86  
Nickel = 6.11  
Selenium = <0.227  
Silver = <0.0872  
Zinc = <32.3

BACKGROUND-07@7-8'  
11/13/24  
7-8'

Arsenic = 1.76  
Barium = 88.7\*  
Cadmium = <0.0855  
Chromium (VI) = <0.0997\*\*  
Copper = <8.55  
Lead = 4.01  
Nickel = 3.91  
Selenium = <0.222  
Silver = <0.0855  
Zinc = <31.6

BACKGROUND-08@7-8'  
11/13/24  
7-8'

Arsenic = 2.00  
Barium = 181\*  
Cadmium = <0.0935  
Chromium (VI) = <0.113\*\*  
Copper = <9.35  
Lead = 3.79  
Nickel = 3.52  
Selenium = <0.243  
Silver = <0.0935  
Zinc = <34.6

BACKGROUND-09@7-8'  
11/13/24  
7-8'

Arsenic = 1.14  
Barium = 69.9  
Cadmium = <0.0893  
Chromium (VI) = <0.116\*\*  
Copper = <8.93  
Lead = 4.38  
Nickel = 3.66  
Selenium = <0.232  
Silver = <0.0893  
Zinc = <33.0

**LEGEND**

- INITIAL ASSESSMENT BOUNDARIES
- APPROXIMATE EXCAVATION BOUNDARIES
- APPROXIMATE LOCATION OF SOIL SAMPLES SUBMITTED FOR LABORATORY ANALYSIS

**PARAMETERS**

SAMPLE LOCATION  
DATE SAMPLE COLLECTED  
APPROXIMATE DEPTH  
Arsenic = (mg/kg)  
Barium = (mg/kg)  
Cadmium = (mg/kg)  
Chromium (VI) = (mg/kg)  
Copper = (mg/kg)  
Lead = (mg/kg)  
Nickel = (mg/kg)  
Selenium = (mg/kg)  
Silver = (mg/kg)  
Zinc = (mg/kg)

mg/kg = MILLIGRAMS PER KILOGRAM

NOTES:  
VALUES PRESENTED WITH A LESS THAN SYMBOL (<) DID NOT CONTAIN CONCENTRATIONS AT/OR ABOVE LABORATORY REPORTING LIMITS AND/OR MINIMUM DETECTION LIMITS.

VALUES PRESENTED IN **BOLD** EXCEED ECMC TABLE 915-1 REGULATORY LIMITS.

\*VALUES EXCEED ECMC TABLE 915-1 PROTECTION OF GROUNDWATER SOIL SCREENING LEVELS, ONLY.

\*\*ACHIEVABLE PRACTICAL QUANTITATIVE LIMITS FOR HEXAVALENT CHROMIUM (Cr VI) IN SOILS IS IN THE RANGE OF 0.1 TO 1 mg/kg.

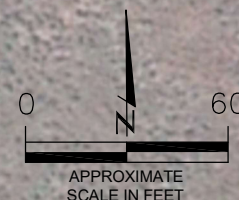
ELEVATED METALS ARE NATURALLY OCCURRING IN COLORADO. LOCAL CLEAN-UP LEVELS ARE 1.25\*BACKGROUND HIGH @ THAT DEPTH, WHERE APPLICABLE.

ECMC = ENERGY & CARBON MANAGEMENT COMMISSION

**BACKGROUND METALS IN SOIL MAP**  
STATE #36-614  
HISTORICAL RELEASE  
40.271320 / -104.501620  
SE¼ NW¼ SEC.36 T4N R64W 6PM  
WELD COUNTY, COLORADO  
API # 05-123-17797  
REMEDIAION # 28208

FIGURE NO.  
8

DRAWN BY:  
ZM



## **TABLES**

**Table 1: Field Data Summary Table**

**Table 2: Summary of Volatile Organic Soil Chemistry Data**

**Table 3: Summary of Polycyclic Aromatic Hydrocarbon Soil Chemistry Data**

**Table 4: Summary of Soil Suitability for Reclamation**

**Table 5: Summary of Metals in Soil Chemistry Data**

**TABLE 1**  
**FIELD DATA SUMMARY TABLE**  
**NOBLE ENERGY 100322**  
**STATE #36-614, WELD COUNTY, COLORADO**  
**REM # 28208**

Sample ID	Sample Date	Depth (ft)	GPS Data		VOC Concentration (ppm)
			Latitude/Longitude		
WH-SS-01 @ 5'	06/19/23	5	40.271321	-104.501632	35.9
WH-SS-02 @ 5'	06/19/23	5	40.271310	-104.501610	4410
WH-SS-03 @ 5'	06/19/23	5	40.271294	-104.501631	122.5
WH-SS-04 @ 5'	06/19/23	5	40.271308	-104.501649	67.2
WH-FS-01 @ 6'	06/19/23	6	40.271308	-104.501631	415.6
FL-SS-01 @ 3'	07/24/23	3	40.270824	-104.501711	1.2
FL-SS-02 @ 3'	07/24/23	3	40.270365	-104.501713	1.1
FL-SS-03 @ 3'	07/24/23	3	40.269506	-104.501664	0.9
FL-SS-04 @ 3'	07/24/23	3	40.269952	-104.501684	1.9
FL-SS-05 @ 3'	07/24/23	3	40.269057	-104.501648	2.5
FL-SS-06 @ 3'	07/25/23	3	40.268794	-104.501650	180.7
EX-FS-01 @ 8'	09/06/24	8	40.271277	-104.501649	6.7
EX-SS-01 @ 7'	09/06/24	7	40.271264	-104.501633	0.9
EX-SS-02 @ 7'	09/09/24	7	40.271308	-104.501691	45.5
EX-SS-03 @ 7'	09/09/24	7	40.271340	-104.501632	2.8
EX-SS-04 @ 7'	09/09/24	7	40.271298	-104.501583	2.3
EX-SS-05 @ 7'	09/09/24	7	40.271263	-104.501616	1.8
EX-FS-02 @ 8'	09/10/24	8	40.271333	-104.501650	2.2
EX-SS-06 @ 7'	09/10/24	7	40.271267	-104.501682	31.7
EX-SS-07 @ 7'	09/10/24	7	40.271280	-104.501692	29.8
EX-SS-08 @ 7'	09/10/24	7	40.271268	-104.501598	5.3
EX-SS-09 @ 7'	09/10/24	7	40.271316	-104.501696	1.5
EX-SS-10 @ 7'	09/11/24	7	40.271277	-104.501593	4.8
EX-SS-11 @ 7'	09/11/24	7	40.271316	-104.501586	8.5
EX-SS-12 @ 7'	09/11/24	7	40.271348	-104.501621	0.8
EX-SS-13 @ 7'	09/11/24	7	40.271350	-104.501674	3.6
EX-SS-14 @ 7'	09/11/24	7	40.271261	-104.501691	1.0
EX-SS-15 @ 7'	09/11/24	7	40.271285	-104.501704	0.9
EX-SS-16 @ 7'	09/11/24	7	40.271329	-104.501706	2.2
EX-SS-17 @ 7'	09/11/24	7	40.271252	-104.501608	1.2
EX-SS-10-01 @ 7'	09/13/24	7	40.271277	-104.501593	1.5
EX-SS-11-01 @ 7'	09/13/24	7	40.271316	-104.501586	3.1
EX-SS-12-01 @ 7'	09/13/24	7	40.271348	-104.501621	2.7
EX-SS-13-01 @ 7'	09/13/24	7	40.271350	-104.501674	2.8
EX-SS-14-01 @ 7'	09/13/24	7	40.271261	-104.501691	3.0
EX-SS-15-01 @ 7'	09/13/24	7	40.271285	-104.501704	2.8
EX-SS-16-01 @ 7'	09/13/24	7	40.271329	-104.501706	3.4
EX-SS-17-01 @ 7'	09/13/24	7	40.271252	-104.501608	3.7
EX-FS-03 @ 8'	09/16/24	8	40.271249	-104.501682	6.2
EX-SS-18 @ 7'	09/16/24	7	40.271255	-104.501706	3.0
EX-SS-19 @ 7'	09/16/24	7	40.271240	-104.501690	3.1
EX-SS-20 @ 7'	09/16/24	7	40.271240	-104.501663	2.4
EX-SS-21 @ 7'	09/16/24	7	40.271325	-104.501731	3.7
EX-SS-22 @ 7'	09/16/24	7	40.271346	-104.501703	4.7
EX-SS-23 @ 7'	09/16/24	7	40.271300	-104.501711	4.1
EX-FS-03-01 @ 8'	09/16/24	8	40.271290	-104.501690	6.4
EX-SS-18-01 @ 7'	09/16/24	7	40.271255	-104.501706	2.1
EX-SS-19-01 @ 7'	09/16/24	7	40.271240	-104.501690	2.6
EX-SS-20-01 @ 7'	09/16/24	7	40.271240	-104.501663	2.8
EX-SS-21-01 @ 7'	09/16/24	7	40.271325	-104.501731	4.2
EX-SS-22-01 @ 7'	09/16/24	7	40.271346	-104.501703	5.0
EX-SS-23-01 @ 7'	09/16/24	7	40.271300	-104.501711	4.3
EX-SS-24 @ 7'	09/17/24	7	40.271370	-104.501684	12.1

**TABLE 1**  
**FIELD DATA SUMMARY TABLE**  
**NOBLE ENERGY 100322**  
**STATE #36-614, WELD COUNTY, COLORADO**  
**REM # 28208**

Sample ID	Sample Date	Depth (ft)	GPS Data		VOC Concentration (ppm)
			Latitude	Longitude	
EX-SS-25 @ 7'	09/17/24	7	40.271349	-104.501655	13.0
EX-SS-24-01 @ 7'	09/17/24	7	40.271370	-104.501684	12.5
EX-SS-25-01 @ 7'	09/17/24	7	40.271349	-104.501655	12.6
Background-01 @ 3'	06/19/23	3	40.271288	-104.501602	10.0
Background-02 @ 3'	07/24/23	3	40.268902	-104.501538	1.9
Background-03 @ 7-8'	11/13/24	7-8	40.271726	-104.501716	2.1
Background-04 @ 7-8'	11/13/24	7-8	40.271662	-104.502055	4.8
Background-05 @ 7-8'	11/13/24	7-8	40.271509	-104.502149	3.5
Background-06 @ 7-8'	11/13/24	7-8	40.271298	-104.502191	3.6
Background-07 @ 7-8'	11/13/24	7-8	40.271137	-104.502189	2.0
Background-08 @ 7-8'	11/13/24	7-8	40.270981	-104.502086	2.8
Background-09 @ 7-8'	11/13/24	7-8	40.270881	-104.501859	1.5

1. Global Positioning System (GPS) data is provided in decimal degrees using North American Datum (NAD) 83 UTMZone 13 North.

2. Volatile organic compound (VOC) concentrations are measured in the field using a photoionization detector (PID).

3. Trimble points are 5-15' off due to field safety concerns and GNSS precision.

PDOP = Position Dilution of Precision

ppm = Parts per million

in. = Inches

ft. = Feet

bgs = Below ground surface

TABLE 2  
SUMMARY OF VOLATILE ORGANIC SOIL CHEMISTRY DATA  
NOBLE ENERGY 100322  
STATE #36-614, WELD COUNTY, COLORADO  
REM # 28208

Sample ID	Sample Date	Depth (ft)	Benzene (mg/kg)	Toluene (mg/kg)	Ethyl-Benzene (mg/kg)	Xylenes (mg/kg)	1,2,4-Trimethyl-Benzene (mg/kg)	1,3,5-Trimethyl-Benzene (mg/kg)	Naphthalene (mg/kg)	TPH (mg/kg)	TPH GRO (mg/kg)	TPH DRO (mg/kg)	TPH ORO (mg/kg)
ECMC Table 915-1 Limits (Residential SSL)			1.2	490	5.8	58	30	27	2	500	500**		
ECMC Table 915-1 Limits (Protection of Groundwater SSL)			0.0026	0.69	0.78	9.9	0.0081	0.0087	0.0038	500	500**		
WH-SS-01 @ 5'	06/19/23	5	<0.00200	<0.00200	<0.00200	<0.00200	<0.00200	<0.00200	<0.00380	<500	<0.200	<25.0	<100
WH-SS-02 @ 5'	06/19/23	5	<0.00200	<0.00200	<0.00200	0.0639	0.0139	0.198	<0.00380	868	88.0	631	149
WH-SS-03 @ 5'	06/19/23	5	<0.00200	<0.00200	<0.00200	<0.00200	<0.00200	<0.00200	<0.00380	<500	<0.200	<25.0	<100
WH-SS-04 @ 5'	06/19/23	5	<0.00200	<0.00200	<0.00200	<0.00200	<0.00200	<0.00200	<0.00380	<500	0.991	<25.0	<100
WH-FS-01 @ 6'	06/19/23	6	<0.00200	<0.00200	<0.00200	<0.00200	<0.00200	0.00620	<0.00380	<500	4.76	128	<100
FL-SS-01 @ 3'	07/24/23	3	<0.00200	<0.00200	<0.00200	<0.00200	<0.00200	<0.00200	<0.00380	<500	<0.200	<25.0	<100
FL-SS-06 @ 3'	07/25/23	3	<0.00200	<0.00200	<0.00200	<0.00200	<0.00200	<0.00200	<0.00380	<500	<0.200	<25.0	<100
EX-FS-01 @ 8'	09/06/24	8	<0.00200	<0.00200	<0.00200	<0.00200	<0.00200	<0.00200	<0.00380	<500	<0.200	<25.0	<100
EX-SS-01 @ 7'	09/06/24	7	<0.00200	<0.00200	<0.00200	<0.00200	<0.00200	<0.00200	<0.00380	<500	<0.200	<25.0	<100
EX-SS-02 @ 7'	09/09/24	7	<0.00200	<0.00200	<0.00200	<0.00200	<0.00200	<0.00200	<0.00380	<500	<0.200	<25.0	<100
EX-SS-03 @ 7'	09/09/24	7	<0.00200	<0.00200	<0.00200	<0.00200	<0.00200	<0.00200	<0.00380	<500	<0.200	<25.0	<100
EX-SS-04 @ 7'	09/09/24	7	<0.00200	<0.00200	<0.00200	<0.00200	<0.00200	<0.00200	<0.00380	<500	<0.200	<25.0	<100
EX-SS-05 @ 7'	09/09/24	7	<0.00200	<0.00200	<0.00200	<0.00200	<0.00200	<0.00200	<0.00380	<500	<0.200	<25.0	<100
EX-FS-02 @ 8'	09/10/24	8	<0.00200	<0.00200	<0.00200	<0.00200	<0.00200	<0.00200	<0.00380	<500	<0.200	<25.0	<100
EX-SS-06 @ 7'	09/10/24	7	<0.00200	<0.00200	<0.00200	<0.00200	<0.00200	<0.00200	<0.00380	<500	<0.200	<25.0	<100
EX-SS-07 @ 7'	09/10/24	7	<0.00200	<0.00200	<0.00200	<0.00200	<0.00200	<0.00200	<0.00380	<500	<0.200	<25.0	<100
EX-SS-08 @ 7'	09/10/24	7	<0.00200	<0.00200	<0.00200	<0.00200	<0.00200	<0.00200	<0.00380	<500	<0.200	<25.0	<100
EX-SS-09 @ 7'	09/10/24	7	<0.00200	<0.00200	<0.00200	<0.00200	<0.00200	<0.00200	<0.00380	<500	<0.200	<25.0	<100
EX-SS-10 @ 7'	09/11/24	7	<0.00200	<0.00200	<0.00200	<0.00200	<0.00200	<0.00200	<0.00380	<500	<0.200	<25.0	<100
EX-SS-11 @ 7'	09/11/24	7	<0.00200	<0.00200	<0.00200	<0.00200	<0.00200	<0.00200	<0.00380	<500	<0.200	<25.0	<100
EX-SS-12 @ 7'	09/11/24	7	<0.00200	<0.00200	<0.00200	<0.00200	<0.00200	<0.00200	<0.00380	<500	<0.200	<25.0	<100
EX-SS-13 @ 7'	09/11/24	7	<0.00200	<0.00200	<0.00200	<0.00200	<0.00200	<0.00200	<0.00380	<500	<0.200	<25.0	<100
EX-SS-14 @ 7'	09/11/24	7	<0.00200	<0.00200	<0.00200	<0.00200	<0.00200	<0.00200	<0.00380	<500	<0.200	<25.0	<100
EX-SS-15 @ 7'	09/11/24	7	<0.00200	<0.00200	<0.00200	<0.00200	<0.00200	<0.00200	<0.00380	<500	<0.200	<25.0	<100
EX-SS-16 @ 7'	09/11/24	7	<0.00200	<0.00200	<0.00200	<0.00200	<0.00200	<0.00200	<0.00380	<500	<0.200	<25.0	<100
EX-SS-17 @ 7'	09/11/24	7	<0.00200	<0.00200	<0.00200	<0.00200	<0.00200	<0.00200	<0.00380	<500	<0.200	<25.0	<100
EX-FS-03 @ 8'	09/16/24	8	<0.00200	<0.00200	<0.00200	<0.00200	<0.00200	<0.00200	<0.00380	<500	<0.200	<25.0	<100
EX-SS-18 @ 7'	09/16/24	7	<0.00200	<0.00200	<0.00200	<0.00200	<0.00200	<0.00200	<0.00380	<500	<0.200	<25.0	<100
EX-SS-19 @ 7'	09/16/24	7	<0.00200	<0.00200	<0.00200	<0.00200	<0.00200	<0.00200	<0.00380	<500	<0.200	<25.0	<100
EX-SS-20 @ 7'	09/16/24	7	<0.00200	<0.00200	<0.00200	<0.00200	<0.00200	<0.00200	<0.00380	<500	<0.200	<25.0	<100
EX-SS-21 @ 7'	09/16/24	7	<0.00200	<0.00200	<0.00200	<0.00200	<0.00200	<0.00200	<0.00380	<500	<0.200	<25.0	<100
EX-SS-22 @ 7'	09/16/24	7	<0.00200	<0.00200	<0.00200	<0.00200	<0.00200	<0.00200	<0.00380	<500	<0.200	<25.0	<100
EX-SS-23 @ 7'	09/16/24	7	<0.00200	<0.00200	<0.00200	<0.00200	<0.00200	<0.00200	<0.00380	<500	<0.200	<25.0	<100
EX-SS-24 @ 7'	09/17/24	7	<0.00200	<0.00200	<0.00200	<0.00200	<0.00200	<0.00200	<0.00380	<500	<0.200	<25.0	<100
EX-SS-25 @ 7'	09/17/24	7	<0.00200	<0.00200	<0.00200	<0.00200	<0.00200	<0.00200	<0.00380	<500	<0.200	<25.0	<100

1. Bold values are equal to or exceed the ECMC Table 915-1 limit(s)
2. Red & blue highlighted soil analytical values indicate an exceedance of the referenced soil screening level (SSL)
3. \* Indicates laboratory minimum detection limit in excess of SSL
4. \*\* Summation of GRO+DRO+ORO must be less than 500 mg/kg

TABLE 3  
SUMMARY OF POLYCYCLIC AROMATIC HYDROCARBON SOIL CHEMISTRY DATA  
NOBLE ENERGY 100322  
STATE #36-614, WELD COUNTY, COLORADO  
REM # 28208

Sample ID	Sample Date	Depth (ft)	Acenaphthene (mg/kg)	Anthracene (mg/kg)	Benzo (a) Anthracene (mg/kg)	Benzo (a) Pyrene (mg/kg)	Benzo (b) Fluoranthene (mg/kg)	Benzo (k) Fluoranthene (mg/kg)	Chrysene (mg/kg)	Dibenzo (a,h) Anthracene (mg/kg)	Fluoranthene (mg/kg)	Fluorene (mg/kg)	Indeno (1,2,3-cd) Pyrene (mg/kg)	1-Methyl - Naphthalene (mg/kg)	2-Methyl - Naphthalene (mg/kg)	
ECMC Table 915-1 Limits (Residential SSL)			360	1800	1.1	0.11	1.1	11	110	0.11	240	240	1.1	180	24	
ECMC Table 915-1 Limits (Protection of Groundwater SSL)			0.55	5.8	0.011	0.24	0.3	2.9	9	0.096	8.9	0.54	0.98	1.3	0.006	0.019
WH-SS-01 @ 5'	06/19/23	5	<0.00067	<0.00067	<0.00067	<0.00067	<0.00067	<0.00067	<0.00067	<0.00067	<0.00067	<0.00067	<0.00067	<0.00067	<0.002	<0.002
WH-SS-02 @ 5'	06/19/23	5	0.0775	<0.00335	<0.00335	<0.00335	<0.00335	<0.00335	0.0251	<0.00335	<0.00335	0.125	<0.00335	0.00822	<b>0.577</b>	<b>0.979</b>
WH-SS-03 @ 5'	06/19/23	5	0.00123	<0.00067	<0.00067	<0.00067	<0.00067	<0.00067	<0.00067	<0.00067	<0.00067	0.00224	<0.00067	<0.00067	0.00509	0.00835
WH-SS-04 @ 5'	06/19/23	5	<0.00067	<0.00067	<0.00067	<0.00067	<0.00067	<0.00067	<0.00067	<0.00067	<0.00067	0.000659	<0.00067	<0.00067	0.00155	0.00297
WH-FS-01 @ 6'	06/19/23	6	0.017	<0.00067	0.00304	<0.00067	<0.00067	<0.00067	0.00581	<0.00067	0.00067	0.029	<0.00067	0.00287	<b>0.0475</b>	<b>0.0517</b>
FL-SS-01 @ 3'	07/24/23	3	<0.00067	<0.00067	<0.00067	<0.00067	<0.00067	<0.00067	<0.00067	<0.00067	<0.00067	<0.00067	<0.00067	<0.00067	<0.002	<0.002
FL-SS-06 @ 3'	07/25/23	3	<0.00067	0.000501	0.000687	0.000837	0.000772	<0.00067	0.000923	<0.00067	0.00229	<0.00067	<0.00067	0.00163	<0.002	<0.002
EX-FS-01 @ 8'	09/06/24	8	<0.020	<0.020	<0.005	<0.020	<0.020	<0.020	<0.020	<0.020	<0.020	<0.020	<0.020	<0.020	<0.002	<0.002
EX-SS-01 @ 7'	09/06/24	7	<0.020	<0.020	<0.005	<0.020	<0.020	<0.020	<0.020	<0.020	<0.020	<0.020	<0.020	<0.020	<0.002	<0.002
EX-SS-02 @ 7'	09/09/24	7	<0.020	<0.020	<0.005	<0.020	<0.020	<0.020	<0.020	<0.020	<0.020	<0.020	<0.020	<0.020	<0.002	<0.002
EX-SS-03 @ 7'	09/09/24	7	<0.020	<0.020	<0.005	<0.020	<0.020	<0.020	<0.020	<0.020	<0.020	<0.020	<0.020	<0.020	<0.002	<0.002
EX-SS-04 @ 7'	09/09/24	7	<0.020	<0.020	<0.005	<0.020	<0.020	<0.020	<0.020	<0.020	<0.020	<0.020	<0.020	<0.020	<0.002	<0.002
EX-SS-05 @ 7'	09/09/24	7	<0.020	<0.020	<0.005	<0.020	<0.020	<0.020	<0.020	<0.020	<0.020	<0.020	<0.020	<0.020	<0.002	<0.002
EX-FS-02 @ 8'	09/10/24	8	<0.020	<0.020	<0.005	<0.020	<0.020	<0.020	<0.020	<0.020	<0.020	<0.020	<0.020	<0.020	<0.002	<0.002
EX-SS-06 @ 7'	09/10/24	7	<0.020	<0.020	<0.005	<0.020	<0.020	<0.020	<0.020	<0.020	<0.020	<0.020	<0.020	<0.020	<0.002	<0.002
EX-SS-07 @ 7'	09/10/24	7	<0.020	<0.020	<0.005	<0.020	<0.020	<0.020	<0.020	<0.020	<0.020	<0.020	<0.020	<0.020	<0.002	<0.002
EX-SS-08 @ 7'	09/10/24	7	<0.020	<0.020	<0.005	<0.020	<0.020	<0.020	<0.020	<0.020	<0.020	<0.020	<0.020	<0.020	<0.002	<0.002
EX-SS-09 @ 7'	09/10/24	7	<0.020	<0.020	<0.005	<0.020	<0.020	<0.020	<0.020	<0.020	<0.020	<0.020	<0.020	<0.020	<0.002	<0.002
EX-SS-10 @ 7'	09/11/24	7	<0.020	<0.020	<0.005	<0.020	<0.020	<0.020	<0.020	<0.020	<0.020	<0.020	<0.020	<0.020	<0.002	<0.002
EX-SS-11 @ 7'	09/11/24	7	<0.020	<0.020	<0.005	<0.020	<0.020	<0.020	<0.020	<0.020	<0.020	<0.020	<0.020	<0.020	<0.002	<0.002
EX-SS-12 @ 7'	09/11/24	7	<0.020	<0.020	<0.005	<0.020	<0.020	<0.020	<0.020	<0.020	<0.020	<0.020	<0.020	<0.020	<0.002	<0.002
EX-SS-13 @ 7'	09/11/24	7	<0.020	<0.020	<0.005	<0.020	<0.020	<0.020	<0.020	<0.020	<0.020	<0.020	<0.020	<0.020	<0.002	<0.002
EX-SS-14 @ 7'	09/11/24	7	<0.020	<0.020	<0.005	<0.020	<0.020	<0.020	<0.020	<0.020	<0.020	<0.020	<0.020	<0.020	<0.002	<0.002
EX-SS-15 @ 7'	09/11/24	7	<0.020	<0.020	<0.005	<0.020	<0.020	<0.020	<0.020	<0.020	<0.020	<0.020	<0.020	<0.020	<0.002	<0.002
EX-SS-16 @ 7'	09/11/24	7	<0.020	<0.020	<0.005	<0.020	<0.020	<0.020	<0.020	<0.020	<0.020	<0.020	<0.020	<0.020	<0.002	<0.002
EX-SS-17 @ 7'	09/11/24	7	<0.020	<0.020	<0.005	<0.020	<0.020	<0.020	<0.020	<0.020	<0.020	<0.020	<0.020	<0.020	<0.002	<0.002
EX-FS-03 @ 8'	09/16/24	8	<0.020	<0.020	<0.005	<0.020	<0.020	<0.020	<0.020	<0.020	<0.020	<0.020	<0.020	<0.020	<0.002	<0.002
EX-SS-18 @ 7'	09/16/24	7	<0.020	<0.020	<0.005	<0.020	<0.020	<0.020	<0.020	<0.020	<0.020	<0.020	<0.020	<0.020	<0.002	<0.002
EX-SS-19 @ 7'	09/16/24	7	<0.020	<0.020	<0.005	<0.020	<0.020	<0.020	<0.020	<0.020	<0.020	<0.020	<0.020	<0.020	<0.002	<0.002
EX-SS-20 @ 7'	09/16/24	7	<0.020	<0.020	<0.005	<0.020	<0.020	<0.020	<0.020	<0.020	<0.020	<0.020	<0.020	<0.020	<0.002	<0.002
EX-SS-21 @ 7'	09/16/24	7	<0.020	<0.020	<0.005	<0.020	<0.020	<0.020	<0.020	<0.020	<0.020	<0.020	<0.020	<0.020	<0.002	<0.002
EX-SS-22 @ 7'	09/16/24	7	<0.020	<0.020	<0.005	<0.020	<0.020	<0.020	<0.020	<0.020	<0.020	<0.020	<0.020	<0.020	<0.002	<0.002
EX-SS-23 @ 7'	09/16/24	7	<0.020	<0.020	<0.005	<0.020	<0.020	<0.020	<0.020	<0.020	<0.020	<0.020	<0.020	<0.020	<0.002	<0.002
EX-SS-24 @ 7'	09/17/24	7	<0.020	<0.020	<0.005	<0.020	<0.020	<0.020	<0.020	<0.020	<0.020	<0.020	<0.020	<0.020	<0.002	<0.002
EX-SS-25 @ 7'	09/17/24	7	<0.020	<0.020	<0.005	<0.020	<0.020	<0.020	<0.020	<0.020	<0.020	<0.020	<0.020	<0.020	<0.002	<0.002

1. Bold values are equal to or exceed the ECMC Table 915-1 limit(s)

2. Red & blue highlighted soil analytical values indicate an exceedance of the referenced soil screening level (SSL)

3. \* Indicates laboratory minimum detection limit in excess of SSL

NA - Not analyzed

**TABLE 4**  
**SUMMARY OF SOIL SUITABILITY FOR RECLAMATION**  
**NOBLE ENERGY 100322**  
**STATE #36-614, WELD COUNTY, COLORADO**  
**REM # 28208**

Sample ID	Sample Date	Depth (ft)	pH (Standard Units)	EC (mmhos/cm)	SAR (Standard Units)	Boron (mg/L)
ECMC Table 915-1 Soil Suitability Limits			6 - 8.3	<4	<6	2
WH-SS-01 @ 5'	06/19/23	5	8.28	0.275	0.327	0.104
WH-SS-02 @ 5'	06/19/23	5	7.72	0.256	0.554	0.114
WH-SS-03 @ 5'	06/19/23	5	8.35	0.258	0.356	0.112
WH-SS-04 @ 5'	06/19/23	5	8.38	0.212	0.360	<0.0991
WH-FS-01 @ 6'	06/19/23	6	8.40	0.292	1.45	0.139
FL-SS-01 @ 3'	07/24/23	3	8.04	0.316	0.169	<0.0998
FL-SS-06 @ 3'	07/25/23	3	8.41	0.472	1.31	<0.0981
EX-FS-01 @ 8'	09/06/24	8	8.32	NA	NA	NA
EX-SS-01 @ 7'	09/06/24	7	8.29	NA	NA	NA
EX-SS-02 @ 7'	09/09/24	7	8.39	NA	NA	NA
EX-SS-03 @ 7'	09/09/24	7	8.36	NA	NA	NA
EX-SS-04 @ 7'	09/09/24	7	8.44	NA	NA	NA
EX-SS-05 @ 7'	09/09/24	7	8.40	NA	NA	NA
EX-FS-02 @ 8'	09/10/24	8	8.45	NA	NA	NA
EX-SS-06 @ 7'	09/10/24	7	8.40	NA	NA	NA
EX-SS-07 @ 7'	09/10/24	7	8.25	NA	NA	NA
EX-SS-08 @ 7'	09/10/24	7	8.41	NA	NA	NA
EX-SS-09 @ 7'	09/10/24	7	9.18	NA	NA	NA
EX-SS-10 @ 7'	09/11/24	7	8.27	NA	NA	NA
EX-SS-11 @ 7'	09/11/24	7	8.25	NA	NA	NA
EX-SS-12 @ 7'	09/11/24	7	8.27	NA	NA	NA
EX-SS-13 @ 7'	09/11/24	7	8.37	NA	NA	NA
EX-SS-14 @ 7'	09/11/24	7	8.35	NA	NA	NA
EX-SS-15 @ 7'	09/11/24	7	8.45	NA	NA	NA
EX-SS-16 @ 7'	09/11/24	7	8.48	NA	NA	NA
EX-SS-17 @ 7'	09/11/24	7	8.37	NA	NA	NA
EX-SS-10-01 @ 7'	09/13/24	7	8.39	NA	NA	NA
EX-SS-11-01 @ 7'	09/13/24	7	8.38	NA	NA	NA
EX-SS-12-01 @ 7'	09/13/24	7	8.55	NA	NA	NA
EX-SS-13-01 @ 7'	09/13/24	7	8.53	NA	NA	NA
EX-SS-14-01 @ 7'	09/13/24	7	8.47	NA	NA	NA
EX-SS-15-01 @ 7'	09/13/24	7	8.51	NA	NA	NA
EX-SS-16-01 @ 7'	09/13/24	7	8.55	NA	NA	NA
EX-SS-17-01 @ 7'	09/13/24	7	8.47	NA	NA	NA
EX-FS-03 @ 8'	09/16/24	8	8.57	NA	NA	NA
EX-SS-18 @ 7'	09/16/24	7	8.43	NA	NA	NA
EX-SS-19 @ 7'	09/16/24	7	8.49	NA	NA	NA
EX-SS-20 @ 7'	09/16/24	7	8.52	NA	NA	NA
EX-SS-21 @ 7'	09/16/24	7	8.71	NA	NA	NA
EX-SS-22 @ 7'	09/16/24	7	8.47	NA	NA	NA
EX-SS-23 @ 7'	09/16/24	7	8.49	NA	NA	NA
EX-FS-03-01 @ 8'	09/16/24	8	8.53	NA	NA	NA
EX-SS-18-01 @ 7'	09/16/24	7	8.48	NA	NA	NA
EX-SS-19-01 @ 7'	09/16/24	7	8.51	NA	NA	NA
EX-SS-20-01 @ 7'	09/16/24	7	8.54	NA	NA	NA

TABLE 4  
SUMMARY OF SOIL SUITABILITY FOR RECLAMATION  
NOBLE ENERGY 100322  
STATE #36-614, WELD COUNTY, COLORADO  
REM # 28208

Sample ID	Sample Date	Depth (ft)	pH (Standard Units)	EC (mmhos/cm)	SAR (Standard Units)	Boron (mg/L)
ECMC Table 915-1 Soil Suitability Limits			6 - 8.3	<4	<6	2
EX-SS-21-01 @ 7'	09/16/24	7	<b>8.58</b>	NA	NA	NA
EX-SS-22-01 @ 7'	09/16/24	7	<b>8.46</b>	NA	NA	NA
EX-SS-23-01 @ 7'	09/16/24	7	<b>8.44</b>	NA	NA	NA
EX-SS-24 @ 7'	09/17/24	7	<b>8.49</b>	NA	NA	NA
EX-SS-25 @ 7'	09/17/24	7	<b>8.52</b>	NA	NA	NA
EX-SS-24-01 @ 7'	09/17/24	7	<b>8.48</b>	NA	NA	NA
EX-SS-25-01 @ 7'	09/17/24	7	<b>8.49</b>	NA	NA	NA
Background-01 @ 3'	06/19/23	3	7.96	NA	NA	NA
Background-02 @ 3'	07/24/23	3	7.94	NA	NA	NA
Background-03 @ 7-8'	11/13/24	7-8	<b>8.32</b>	0.240	0.305	<0.0994
Background-04 @ 7-8'	11/13/24	7-8	8.28	0.249	0.506	0.121
Background-05 @ 7-8'	11/13/24	7-8	7.98	0.436	0.783	0.151
Background-06 @ 7-8'	11/13/24	7-8	8.23	0.304	0.582	<0.101
Background-07 @ 7-8'	11/13/24	7-8	<b>8.33</b>	0.318	0.638	<0.0989
Background-08 @ 7-8'	11/13/24	7-8	8.17	0.280	0.445	<0.100
Background-09 @ 7-8'	11/13/24	7-8	<b>8.40</b>	0.180	0.272	<0.0997
Maximum Background Concentration @ 3'			7.96			
Maximum Background Concentration @ 7-8'			<b>8.40</b>	0.436	0.783	0.151

1. Bold values are equal to or exceed the ECMC Table 915-1 limit(s)
  2. Blue highlighted soil analytical values indicate a regulatory exceedance
- NA - Not analyzed





TABLE 5  
SUMMARY OF METALS IN SOIL CHEMISTRY DATA  
NOBLE ENERGY 100322  
STATE #36-614, WELD COUNTY, COLORADO  
REM # 28208

Sample ID	Sample Date	Depth (ft)	Arsenic (mg/kg)	Barium (mg/kg)	Cadmium (mg/kg)	Chromium (VI) (mg/kg)	Copper (mg/kg)	Lead (mg/kg)	Nickel (mg/kg)	Selenium (mg/kg)	Silver (mg/kg)	Zinc (mg/kg)
ECMC Table 915-1 Limits (Residential SSL)			0.68	15000	71	0.3	3100	400	1500	390	390	23000
ECMC Table 915-1 Limits (Protection of Groundwater SSL)			0.29	82	0.38	0.00067	46	14	26	0.26	0.8	370
EX-SS-22-01 @ 7'	09/16/24	7	<b>11.4</b>	80.0	NA	NA	NA	NA	NA	NA	NA	NA
EX-SS-23-01 @ 7'	09/16/24	7	<b>4.70</b>	79.8	NA	NA	NA	NA	NA	NA	NA	NA
EX-SS-24 @ 7'	09/17/24	7	<b>3.03</b>	<b>98.7</b>	NA	<b>0.269</b>	NA	NA	NA	NA	NA	NA
EX-SS-25 @ 7'	09/17/24	7	<b>13.8</b>	<b>105</b>	NA	<b>1.49</b>	NA	NA	NA	NA	NA	NA
EX-SS-24-01 @ 7'	09/17/24	7	<b>2.81</b>	<b>84.0</b>	NA	NA	NA	NA	NA	NA	NA	NA
EX-SS-25-01 @ 7'	09/17/24	7	<b>9.58</b>	76.7	NA	NA	NA	NA	NA	NA	NA	NA
Background-01 @ 3'	06/19/23	3	<b>2.31</b>	76.3	<0.0874	NA	<8.74	<8.74	<8.74	<0.0874	<0.0874	<87.4
Background-02 @ 3'	07/24/23	3	<b>1.42</b>	NA	NA	NA	NA	NA	NA	NA	NA	NA
Background-03 @ 7-8'	11/13/24	7-8	<b>2.90</b>	71.7	<0.0969	<0.128	<9.69	5.46	6.28	<0.252	<0.0969	<35.8
Background-04 @ 7-8'	11/13/24	7-8	<b>2.37</b>	66.4	<0.0962	<0.158	<9.62	6.17	6.79	<0.250	<0.0962	<35.6
Background-05 @ 7-8'	11/13/24	7-8	<b>3.21</b>	79.2	0.0947	<0.0953	<8.85	6.70	7.6	<0.230	<0.0885	<32.8
Background-06 @ 7-8'	11/13/24	7-8	<b>2.28</b>	79.8	<0.0872	<0.115	<8.72	5.86	6.11	<0.227	<0.0872	<32.3
Background-07 @ 7-8'	11/13/24	7-8	<b>1.76</b>	<b>88.7</b>	<0.0855	<0.0997	<8.55	4.01	3.91	<0.222	<0.0855	<31.6
Background-08 @ 7-8'	11/13/24	7-8	<b>2.00</b>	<b>181</b>	<0.0935	<0.113	<9.35	3.79	3.52	<0.243	<0.0935	<34.6
Background-09 @ 7-8'	11/13/24	7-8	<b>1.14</b>	69.9	<0.0893	<0.116	<8.93	4.38	3.66	<0.232	<0.0893	<33.0
125% Maximum Background Concentration @ 3'			<b>2.89</b>	<b>95.4</b>								
125% Maximum Background Concentration @ 7-8'			<b>4.01</b>	<b>226</b>	0.118			8.38	9.50			

1. Bold values are equal to or exceed the ECMC Table 915-1 limit(s)
  2. Red & blue highlighted soil analytical values indicate an exceedance of the referenced soil screening level (SSL)
- \* Indicates laboratory minimum detection limit in excess of SSL  
NA - Not analyzed

## **ATTACHMENT A**

### **Photo Log**

State #36-614  
API # 05-123-17797  
Remediation # 28208

Source Excavation

September 2024

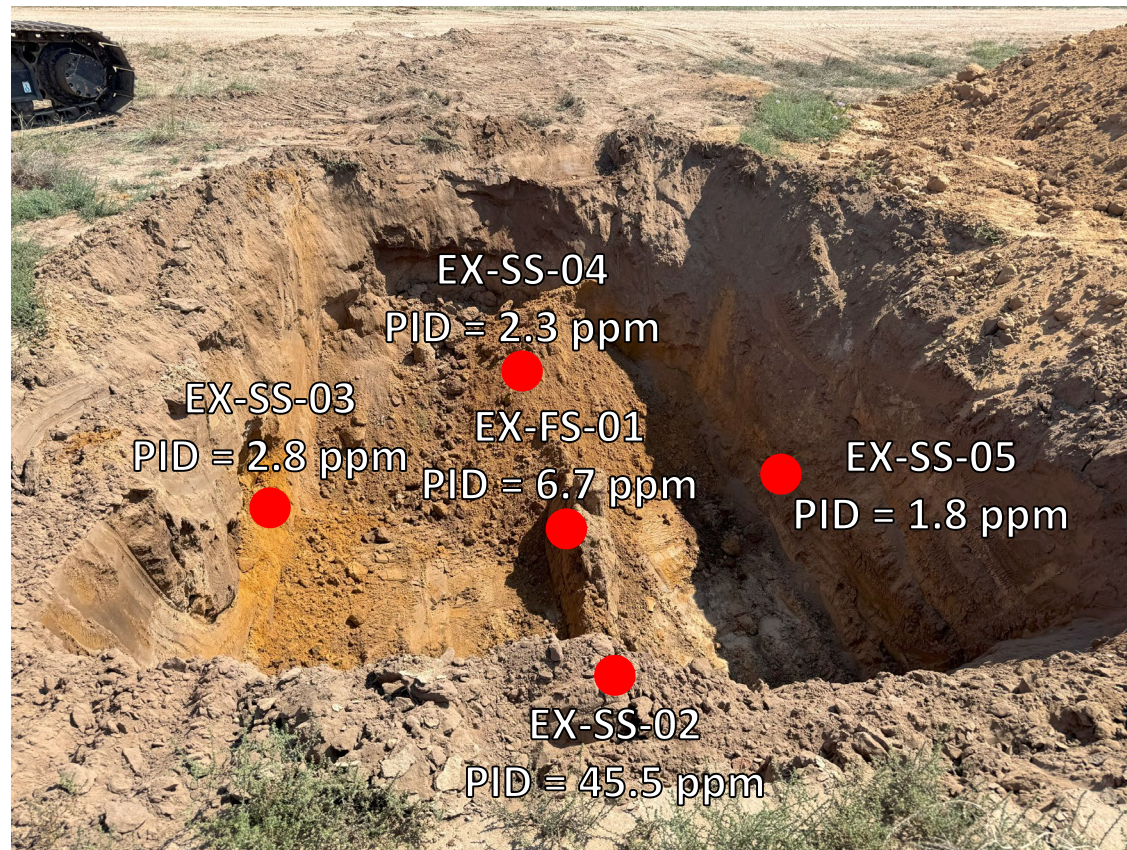


# Source Excavation / Confirmation Sampling – 09/06/24 - 09/09/24



Looking southeast at former wellhead footprint

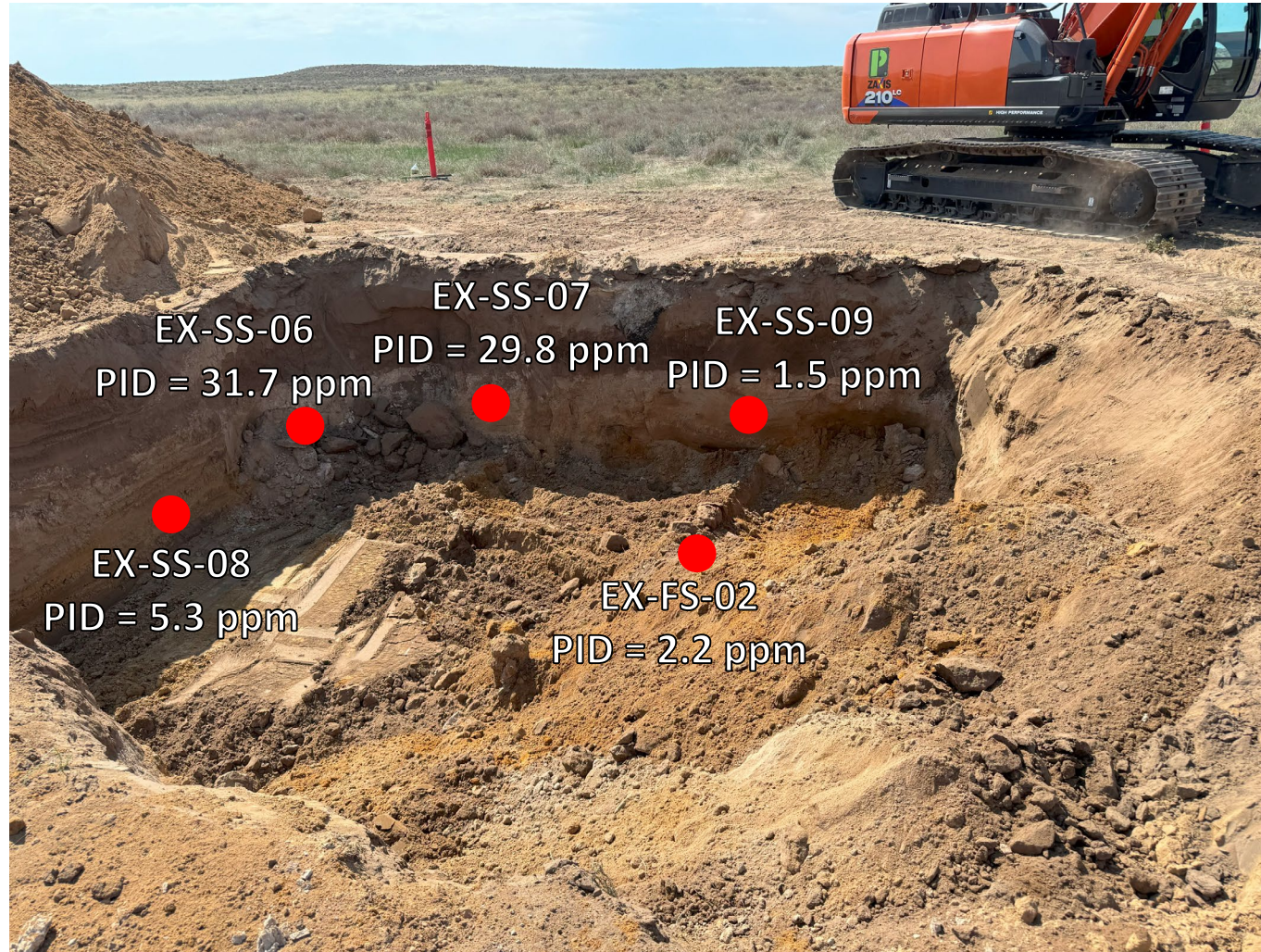
No petroleum hydrocarbon staining or odor observed



Looking east at former wellhead footprint

No petroleum hydrocarbon staining or odor observed

# Source Excavation / Confirmation Sampling – 09/10/24



Looking west at former wellhead footprint

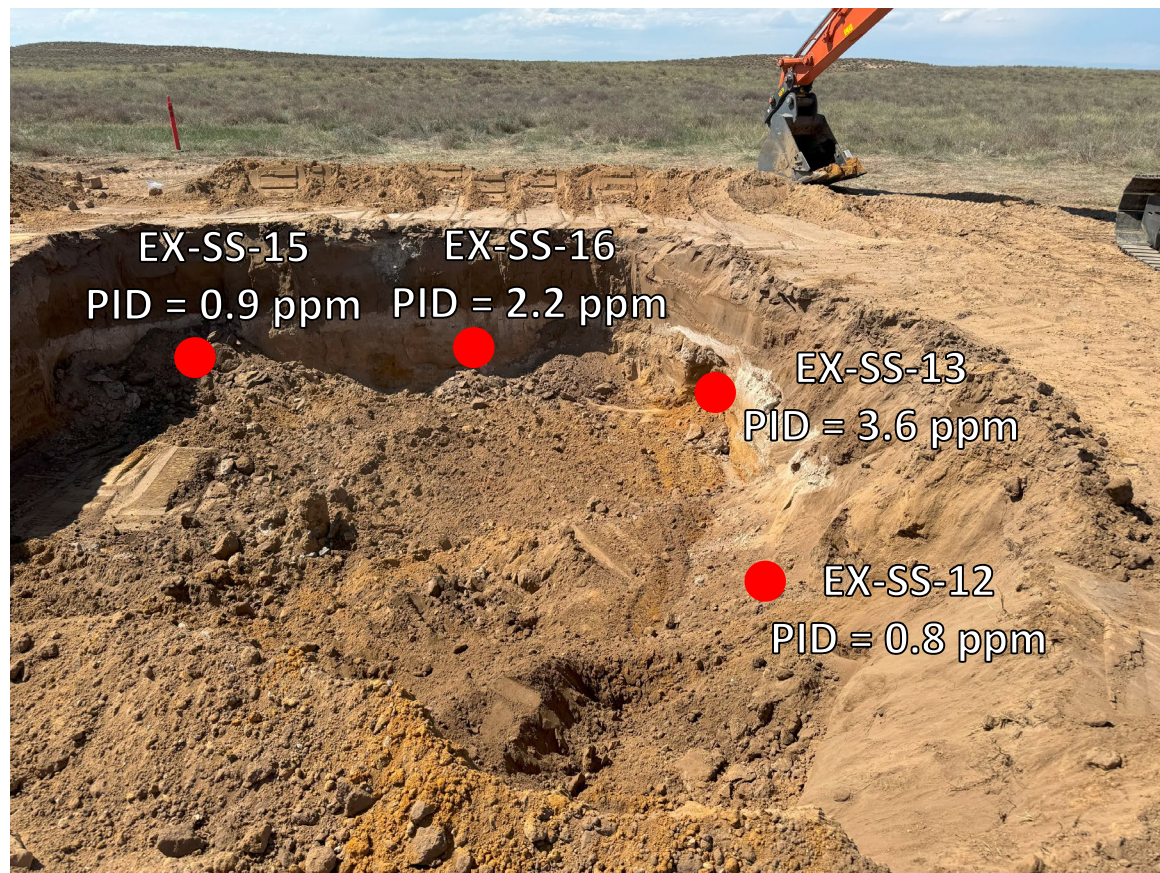
No petroleum hydrocarbon staining or odor observed

# Source Excavation / Confirmation Samples— 09/11/24



Looking east at former wellhead footprint

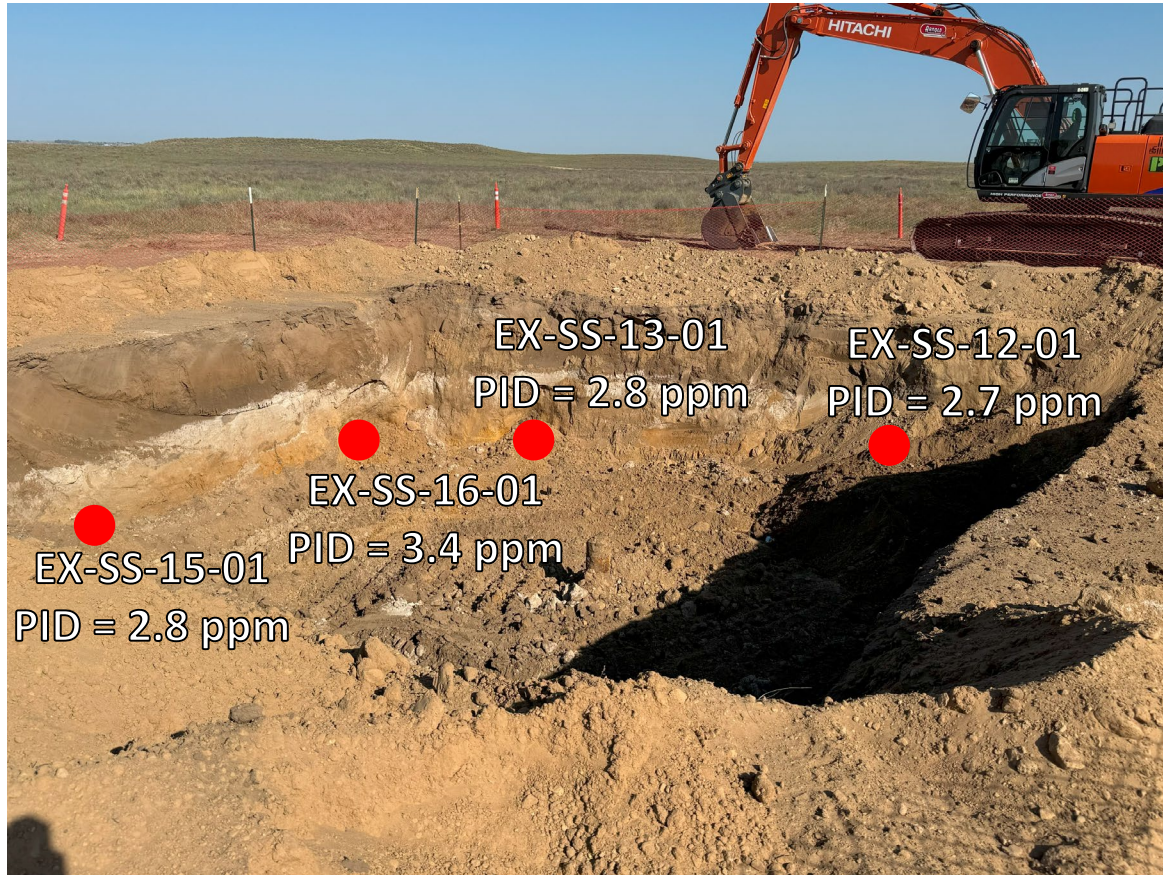
No petroleum hydrocarbon staining or odor observed



Looking west at former wellhead footprint

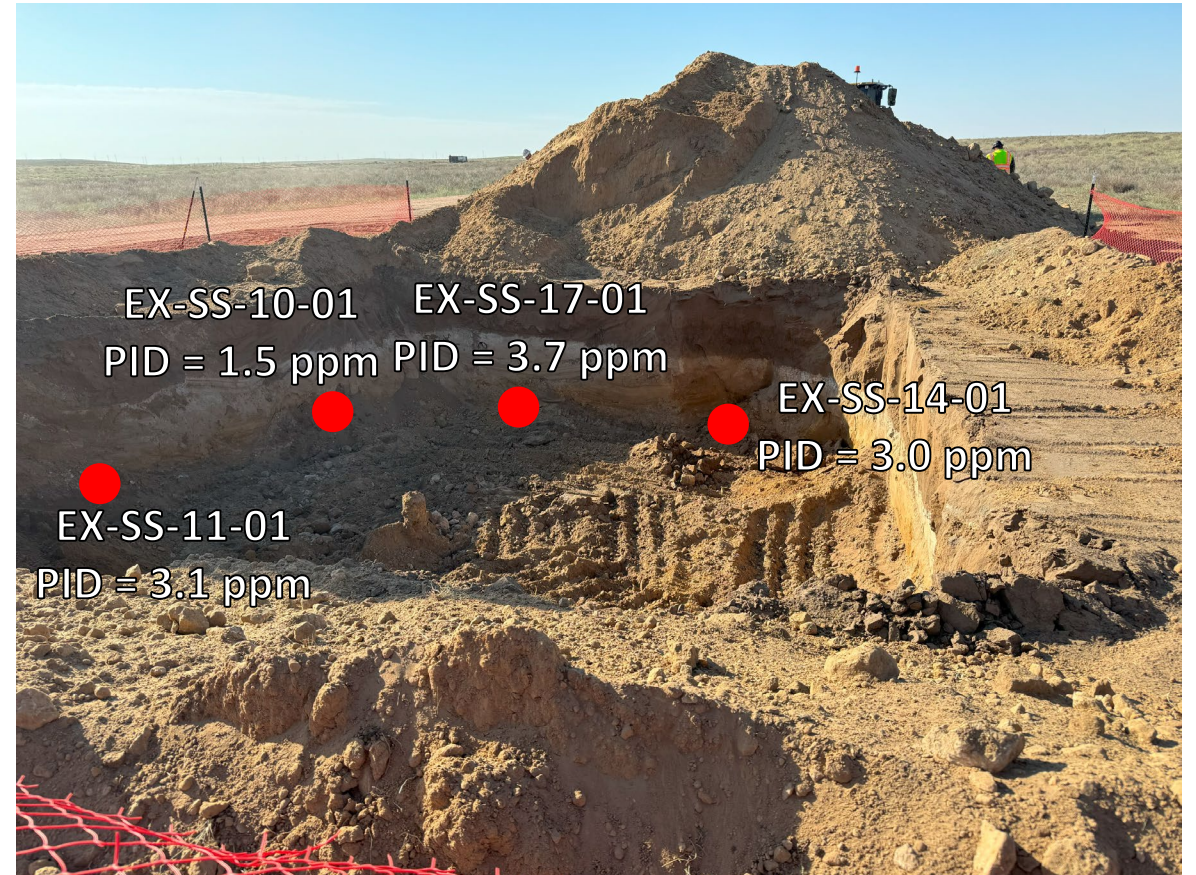
No petroleum hydrocarbon staining or odor observed

# Source Excavation / Confirmation Sampling – 09/13/24



Looking northeast at former wellhead footprint

No petroleum hydrocarbon staining or odor observed



Looking south at former wellhead footprint

No petroleum hydrocarbon staining or odor observed

# Source Excavation / Confirmation Sampling – 09/16/24



Looking south a former wellhead footprint

No petroleum hydrocarbon staining or odor observed

# Source Excavation /Confirmation Sampling – 09/16/24



Looking west at former wellhead footprint

No petroleum hydrocarbon staining or odor observed

# Source Excavation / Confirmation Sampling – 09/17/24



Looking east at former wellhead footprint

No petroleum hydrocarbon staining or odor observed