

## **FIGURES**

**Figure 1: Topographic Site Location Map**

**Figure 2: Aerial Site Location Map**

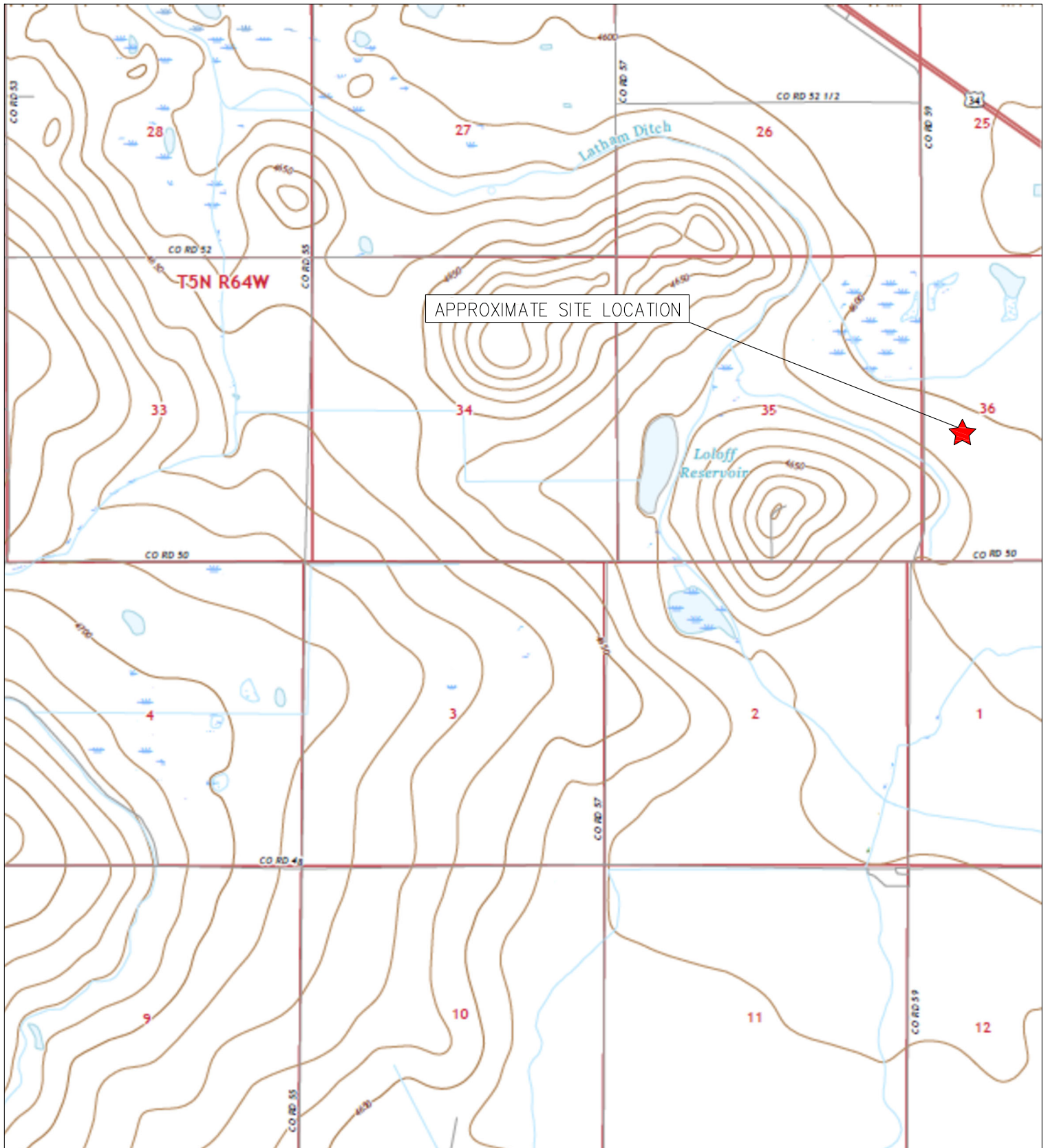
**Figure 3: Soil Sample Location Map**

**Figure 4: Soil Boring Soil Analytical Map**

**Figure 5: Background Soil Analytical Map**

**Figure 6: Soil Boring Metals in Soil Map**

**Figure 7: Background Metals in Soil Map**



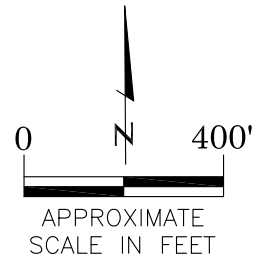
TOPOGRAPHIC SITE LOCATION MAP  
 BAKER STATE B #36-12  
 HISTORICAL RELEASE  
 40.354080 / -104.504900  
 NW¼ SW¼ SEC.36 T5N R64W 6PM  
 WELD COUNTY, COLORADO  
 LOCATION ID 482960  
 REMEDIATION # 20770





**LEGEND**

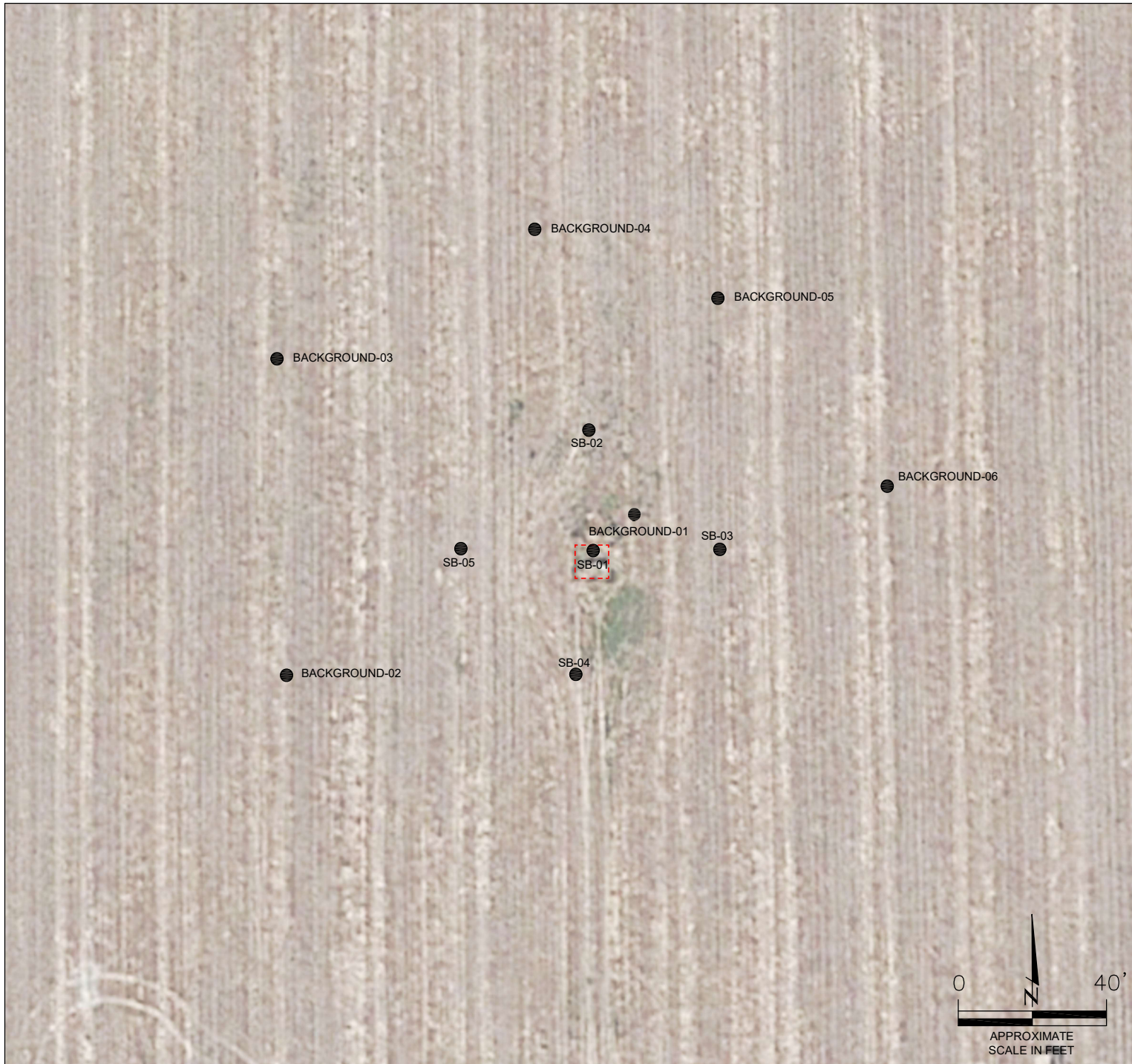
- FORMER BAKER STATE B #36-12 WELLHEAD (PLUGGED AND ABANDONED)
- ASSOCIATED SEPARATOR
- APPROXIMATE FLOWLINE LOCATION



AERIAL SITE LOCATION MAP  
 BAKER STATE B #36-12  
 HISTORICAL RELEASE  
 40.354080 / -104.504900  
 NW¼ SW¼ SEC.36 T5N R64W 6PM  
 WELD COUNTY, COLORADO  
 LOCATION ID 482960  
 REMEDIATION # 20770

DRAWN BY:  
ZM

FIGURE NO.  
2



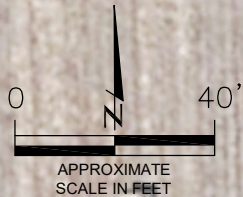
**LEGEND**

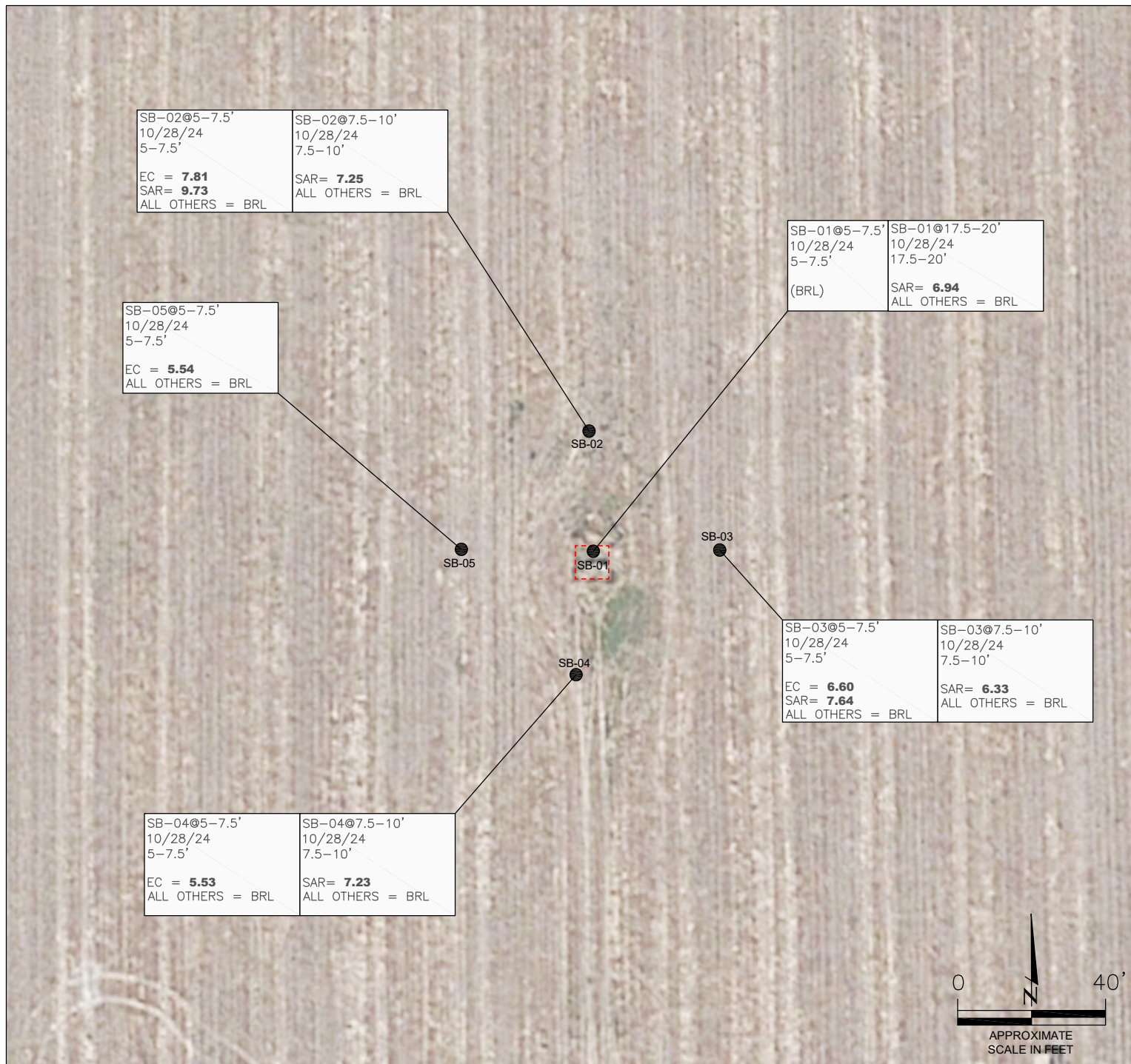
- - - INITIAL ASSESSMENT BOUNDARIES
- APPROXIMATE LOCATION OF SOIL SAMPLES SUBMITTED FOR LABORATORY ANALYSIS

SOIL SAMPLE LOCATION MAP  
 BAKER STATE B #36-12  
 HISTORICAL RELEASE  
 40.354080 / -104.504900  
 NW¼, SW¼ SEC.36 T5N R64W 6PM  
 WELD COUNTY, COLORADO  
 LOCATION ID 482960  
 REMEDIATION # 20770

FIGURE NO.  
3

DRAWN BY:  
ZM





**LEGEND**

- - - - INITIAL ASSESSMENT BOUNDARIES
- APPROXIMATE LOCATION OF SOIL SAMPLES SUBMITTED FOR LABORATORY ANALYSIS

**PARAMETERS**

|   |                                 |
|---|---------------------------------|
| <b>SAMPLE LOCATION</b>                          |                                 |
| DATE  |                                 |
| DEPTH (FEET)                                    |                                 |
| B =   | BENZENE (mg/kg)                 |
| T =   | TOLUENE (mg/kg)                 |
| E =   | ETHYLBENZENE (mg/kg)            |
| X =   | TOTAL XYLENES (mg/kg)           |
| G =   | TPH-GRO (mg/kg)                 |
| D =   | TPH-DRO (mg/kg)                 |
| R =   | TPH-RRO (mg/kg)                 |
| 1,2,4-TMB = 1,2,4 TRIMETHYLBENZENE (mg/kg)      |                                 |
| 1,3,5-TMB = 1,3,5 TRIMETHYLBENZENE (mg/kg)      |                                 |
| B <sub>rn</sub> =                               | BORON (mg/L)                    |
| EC =  | SPECIFIC CONDUCTANCE (mmhos/cm) |
| SAR=  | SODIUM ADSORPTION RATIO         |
| pH =  | pH (pH UNITS)                   |
| POLYCYCLIC AROMATIC HYDROCARBONS (PAHs) (mg/kg) |                                 |

mg/kg = MILLIGRAMS PER KILOGRAM  
 mg/L = MILLIGRAMS PER LITER  
 mmhos/cm = MILLIMHOS PER CENTIMETER

(BRL) = ALL VALUES BELOW REGULATORY LIMITS

BRL = BELOW REGULATORY LIMITS

TPH-GRO = TOTAL PETROLEUM HYDROCARBONS - GASOLINE RANGE ORGANICS  
 TPH-DRO = TOTAL PETROLEUM HYDROCARBONS - DIESEL RANGE ORGANICS  
 TPH-RRO = TOTAL PETROLEUM HYDROCARBONS - RESIDUAL RANGE ORGANICS

NOTES:  
 VALUES PRESENTED IN **BOLD** EXCEED ECMC TABLE 915-1 REGULATORY LIMITS.

ECMC = ENERGY AND CARBON MANAGEMENT COMMISSION

**SOIL BORING SOIL ANALYTICAL MAP**  
 BAKER STATE B #36-12  
 HISTORICAL RELEASE  
 40.354080 / -104.504900  
 NW¼ SW¼ SEC.36 T5N R64W 6PM  
 WELD COUNTY, COLORADO  
 LOCATION ID 482960  
 REMEDIATION # 20770

FIGURE NO.

4

DRAWN BY:

ZM

LEGEND

- INITIAL ASSESSMENT BOUNDARIES
- APPROXIMATE LOCATION OF SOIL SAMPLES SUBMITTED FOR LABORATORY ANALYSIS

PARAMETERS

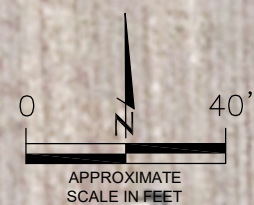
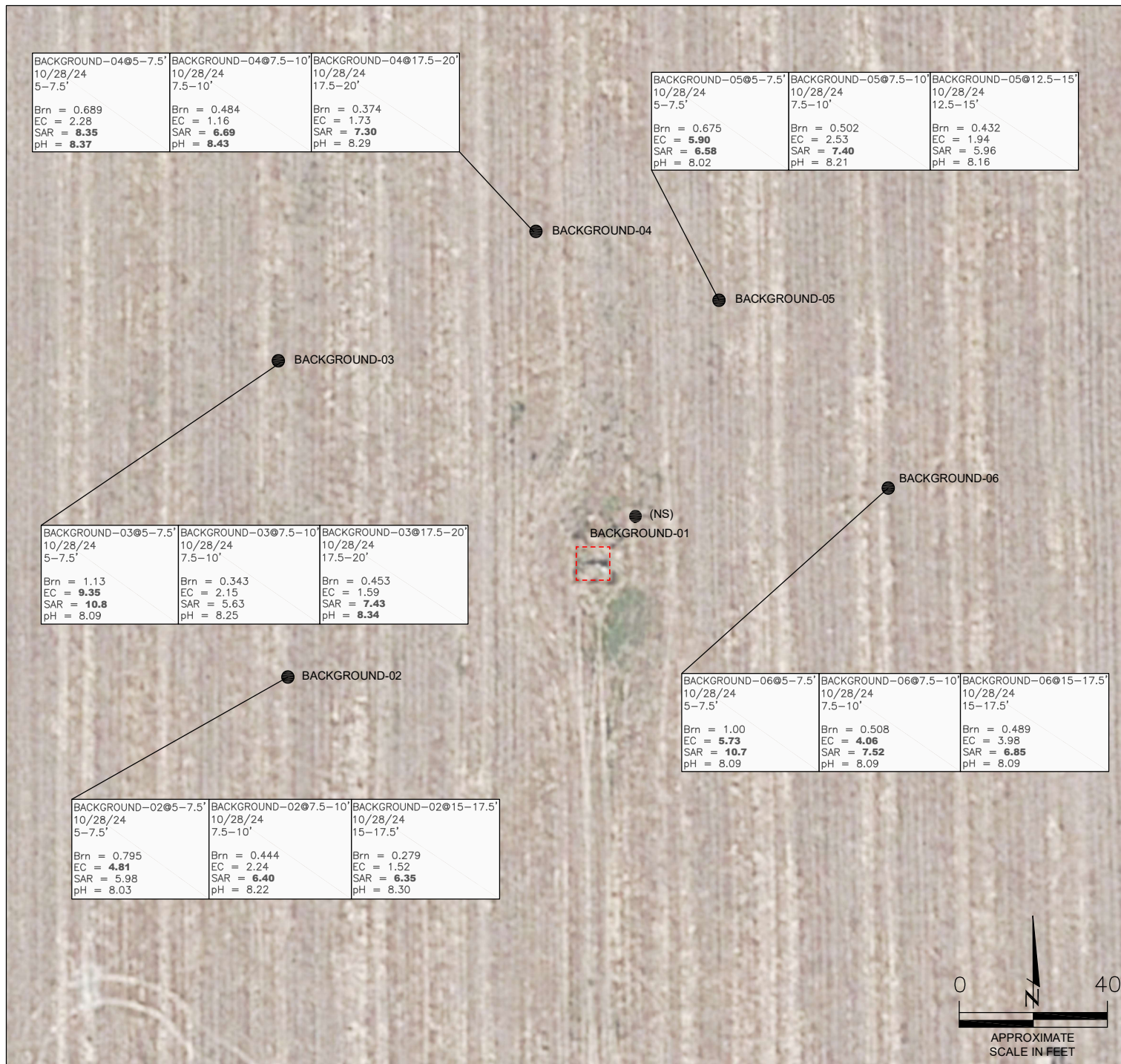
**SAMPLE LOCATION**  
 DATE  
 DEPTH (FEET)  
 Brn = BORON (mg/L)  
 EC = SPECIFIC CONDUCTANCE (mmhos/cm)  
 SAR = SODIUM ADSORPTION RATIO  
 pH = pH (pH UNITS)

mg/kg = MILLIGRAMS PER KILOGRAM  
 mg/L = MILLIGRAMS PER LITER  
 mmhos/cm = MILLIMHOS PER CENTIMETER

NS - NOT SAMPLED

NOTES:  
 VALUES PRESENTED IN **BOLD** EXCEED ECMC TABLE 915-1 REGULATORY LIMITS.

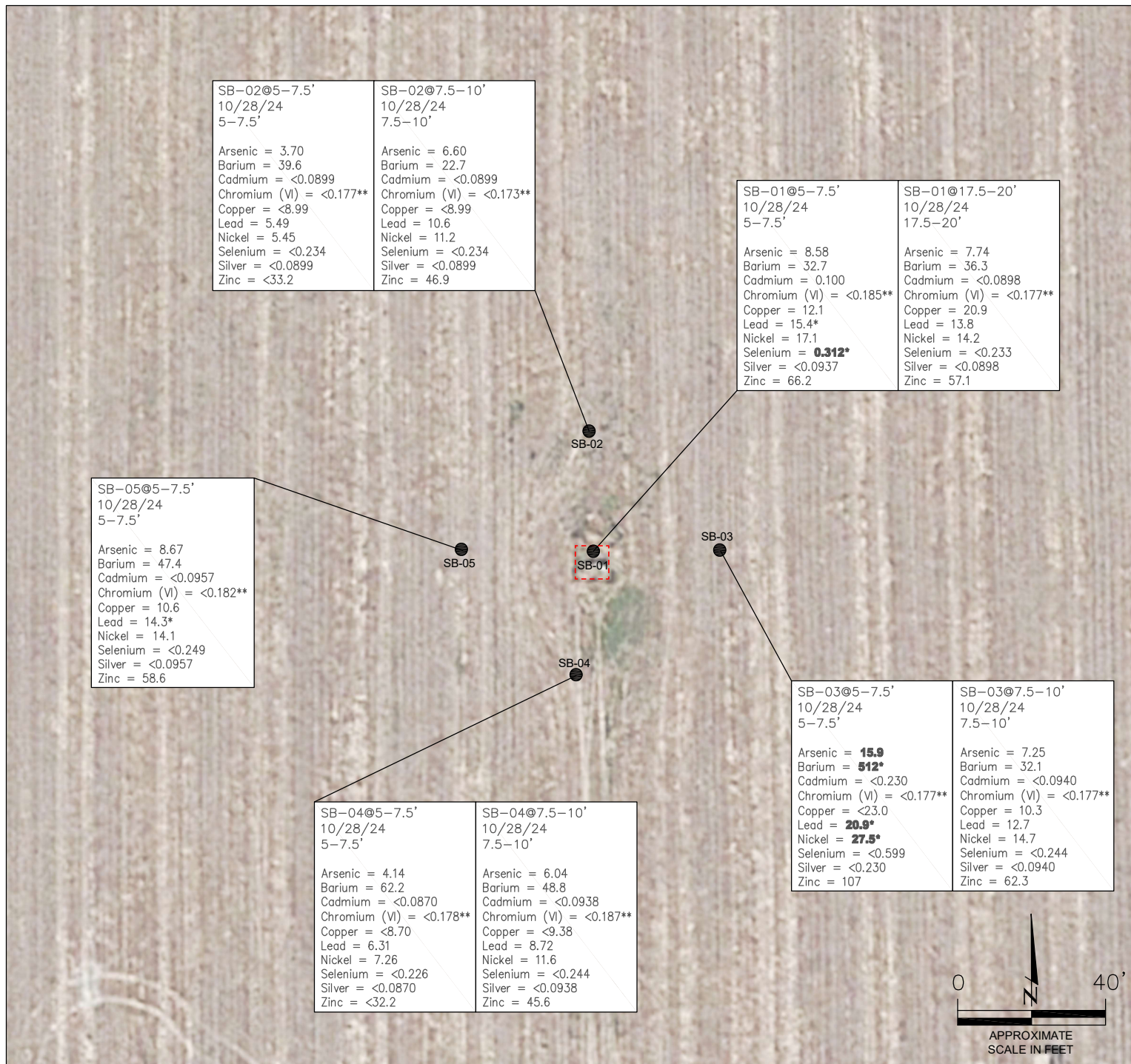
ECMC = ENERGY AND CARBON MANAGEMENT COMMISSION



BACKGROUND SOIL ANALYTICAL MAP  
 BAKER STATE B #36-12  
 HISTORICAL RELEASE  
 40.354080 / -104.504900  
 NW¼ SW¼ SEC.36 T5N R64W 6PM  
 WELD COUNTY, COLORADO  
 LOCATION ID 482960  
 REMEDIATION # 20770

FIGURE NO.  
5

DRAWN BY:  
ZM



**LEGEND**

- INITIAL ASSESSMENT BOUNDARIES
- APPROXIMATE LOCATION OF SOIL SAMPLES SUBMITTED FOR LABORATORY ANALYSIS

**PARAMETERS**

|                         |
|-------------------------|
| SAMPLE LOCATION         |
| DATE SAMPLE COLLECTED   |
| APPROXIMATE DEPTH       |
| Arsenic = (mg/kg)       |
| Barium = (mg/kg)        |
| Cadmium = (mg/kg)       |
| Chromium (VI) = (mg/kg) |
| Copper = (mg/kg)        |
| Lead = (mg/kg)          |
| Nickel = (mg/kg)        |
| Selenium = (mg/kg)      |
| Silver = (mg/kg)        |
| Zinc = (mg/kg)          |

mg/kg = MILLIGRAMS PER KILOGRAM

NOTES:  
VALUES PRESENTED WITH A LESS THAN SYMBOL (<) DID NOT CONTAIN CONCENTRATIONS AT/OR ABOVE LABORATORY REPORTING LIMITS AND/OR MINIMUM DETECTION LIMITS.

VALUES PRESENTED IN **BOLD** EXCEED ECMC TABLE 915-1 REGULATORY LIMITS AND LOCAL CLEAN-UP LEVELS.

\*VALUES EXCEED ECMC TABLE 915-1 "PROTECTION OF GROUNDWATER SOIL SCREENING LEVELS", ONLY.

ELEVATED METALS ARE NATURALLY OCCURRING IN COLORADO. LOCAL CLEAN-UP LEVELS ARE 1.25\*BACKGROUND HIGH @ THAT DEPTH, WHERE APPLICABLE.

ECMC = ENERGY & CARBON MANAGEMENT COMMISSION

**SOIL BORING METALS IN SOIL MAP**  
BAKER STATE B #36-12  
HISTORICAL RELEASE  
40.354080 / -104.504900  
NE¼ SW¼ SEC.36 T5N R64W 6PM  
WELD COUNTY, COLORADO  
API # 05-123-17430  
REMEDATION # 20770

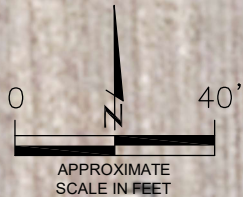


FIGURE NO.  
6  
DRAWN BY:  
ZM

LEGEND

- INITIAL ASSESSMENT BOUNDARIES
- APPROXIMATE LOCATION OF SOIL SAMPLES SUBMITTED FOR LABORATORY ANALYSIS

PARAMETERS

SAMPLE LOCATION  
 DATE SAMPLE COLLECTED  
 APPROXIMATE DEPTH  
 Arsenic = (mg/kg)  
 Barium = (mg/kg)  
 Cadmium = (mg/kg)  
 Chromium (VI) = (mg/kg)  
 Copper = (mg/kg)  
 Lead = (mg/kg)  
 Nickel = (mg/kg)  
 Selenium = (mg/kg)  
 Silver = (mg/kg)  
 Zinc = (mg/kg)

mg/kg = MILLIGRAMS PER KILOGRAM

NA - NOT ANALYZED

NOTES:  
 VALUES PRESENTED WITH A LESS THAN SYMBOL (<) DID NOT CONTAIN CONCENTRATIONS AT/OR ABOVE LABORATORY REPORTING LIMITS AND/OR MINIMUM DETECTION LIMITS.

VALUES PRESENTED IN **BOLD** EXCEED ECMC TABLE 915-1 REGULATORY LIMITS AND LOCAL CLEAN-UP LEVELS.

\*VALUES EXCEED ECMC TABLE 915-1 "PROTECTION OF GROUNDWATER SOIL SCREENING LEVELS", ONLY.

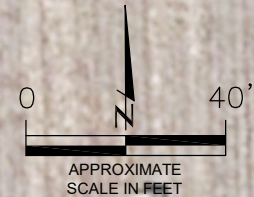
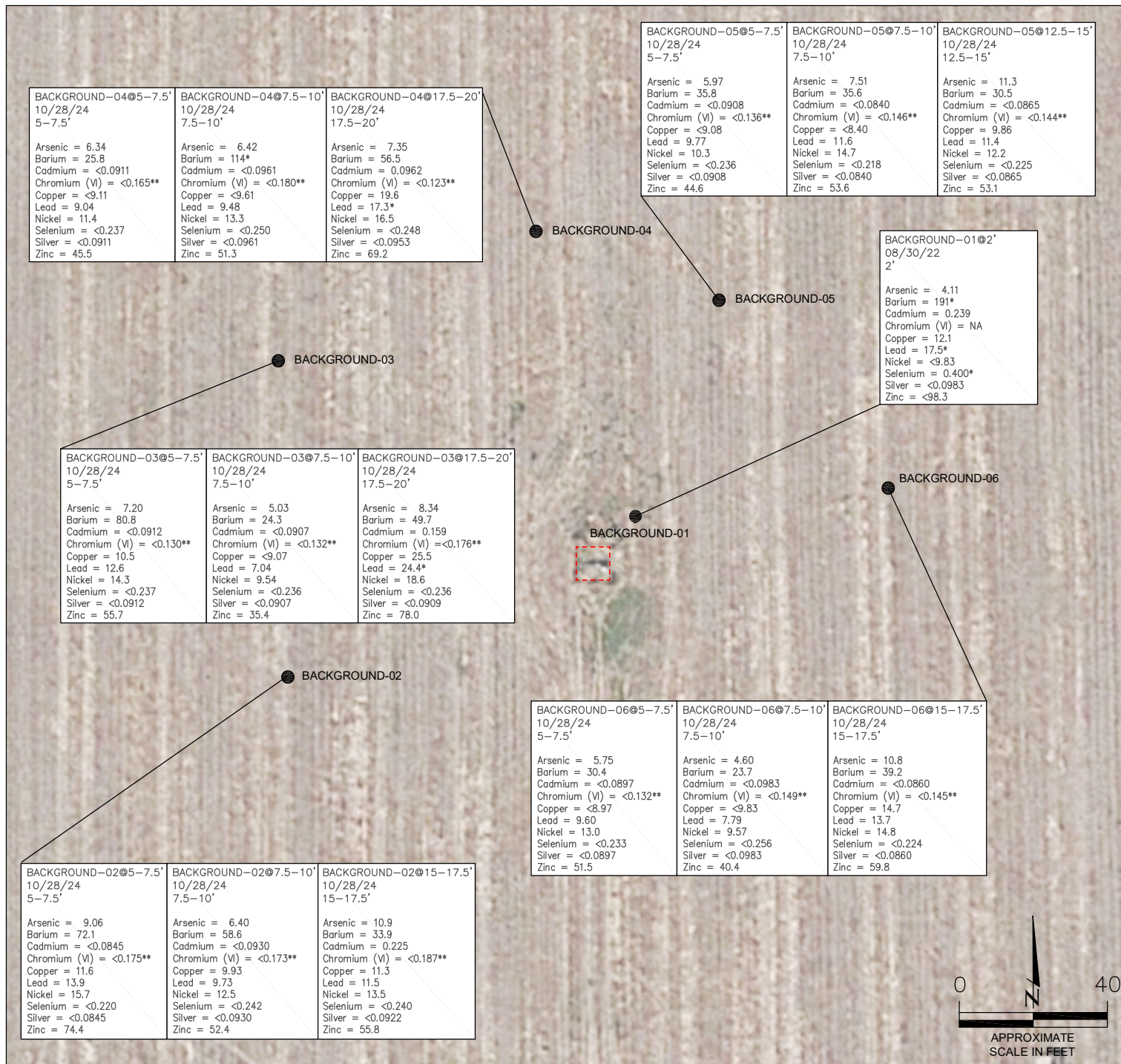
ELEVATED METALS ARE NATURALLY OCCURRING IN COLORADO. LOCAL CLEAN-UP LEVELS ARE 1.25\*BACKGROUND HIGH @ THAT DEPTH, WHERE APPLICABLE.

ECMC = ENERGY & CARBON MANAGEMENT COMMISSION

BACKGROUND METALS IN SOIL MAP  
 BAKER STATE B #36-12  
 HISTORICAL RELEASE  
 40.354080 / -104.504900  
 NE¼ SW¼ SEC.36 T5N R64W 6PM  
 WELD COUNTY, COLORADO  
 API # 05-123-17430  
 REMEDIATION # 20770

FIGURE NO.  
7

DRAWN BY:  
ZM



## **TABLES**

**Table 1: Field Data Summary Table**

**Table 2: Summary of Volatile Organic Soil Chemistry Data**

**Table 3: Summary of Polycyclic Aromatic Hydrocarbon Soil Chemistry Data**

**Table 4: Summary of Soil Suitability for Reclamation**

**Table 5: Summary of Metals in Soil Chemistry Data**

**TABLE 1**  
**FIELD DATA SUMMARY TABLE**  
**NOBLE ENERGY 100322**  
**BAKER STATE B #36-12, WELD COUNTY, COLORADO**  
**REM # 20770**

| Sample ID                | Sample Date | Depth   | GPS Data           |             | VOC Concentration (ppm) |
|--------------------------|-------------|---------|--------------------|-------------|-------------------------|
|                          |             |         | Latitude/Longitude |             |                         |
| WH-SS-01 @ 5'            | 8/30/2022   | 5       | 40.354111          | -104.504899 | 8.0                     |
| WH-SS-02 @ 5'            | 8/30/2022   | 5       | 40.354099          | -104.504882 | 112.4                   |
| WH-SS-03 @ 5'            | 8/30/2022   | 5       | 40.354087          | -104.504899 | 274.8                   |
| WH-SS-04 @ 5'            | 8/30/2022   | 5       | 40.354102          | -104.504918 | 2.7                     |
| WH-FS-01 @ 6'            | 8/30/2022   | 6       | 40.354100          | -104.504899 | 212.3                   |
| SB-01 @ 5-7.5'           | 10/28/2024  | 5-7.5   | 40.354102          | -104.504896 | 1.6                     |
| SB-01 @ 17.5-20'         | 10/28/2024  | 17.5-20 | 40.354102          | -104.504896 | 2.2                     |
| SB-02 @ 5-7.5'           | 10/28/2024  | 5-7.5   | 40.354195          | -104.504900 | 0.9                     |
| SB-02 @ 7.5-10'          | 10/28/2024  | 7.5-10  | 40.354195          | -104.504900 | 1.7                     |
| SB-03 @ 5-7.5'           | 10/28/2024  | 5-7.5   | 40.354096          | -104.504776 | 3.1                     |
| SB-03 @ 7.5-10'          | 10/28/2024  | 7.5-10  | 40.354096          | -104.504776 | 3.8                     |
| SB-04 @ 5-7.5'           | 10/28/2024  | 5-7.5   | 40.354008          | -104.504915 | 2.7                     |
| SB-04 @ 7.5-10'          | 10/28/2024  | 7.5-10  | 40.354008          | -104.504915 | 3.5                     |
| SB-05 @ 5-7.5'           | 10/28/2024  | 5-7.5   | 40.354106          | -104.505022 | 3.6                     |
| Background-01 @ 2'       | 8/30/2022   | 2       | 40.354130          | -104.504854 | 10.7                    |
| Background-02 @ 5-7.5'   | 10/28/2024  | 5-7.5   | 40.354009          | -104.505196 | 4.9                     |
| Background-02 @ 7.5-10'  | 10/28/2024  | 7.5-10  | 40.354009          | -104.505196 | 6.5                     |
| Background-02 @ 15-17.5' | 10/28/2024  | 15-17.5 | 40.354009          | -104.505196 | 5.6                     |
| Background-03 @ 5-7.5'   | 10/28/2024  | 5-7.5   | 40.354233          | -104.505210 | 2.6                     |
| Background-03 @ 7.5-10'  | 10/28/2024  | 7.5-10  | 40.354233          | -104.505210 | 4.2                     |
| Background-03 @ 17.5-20' | 10/28/2024  | 17.5-20 | 40.354233          | -104.505210 | 0.8                     |
| Background-04 @ 5-7.5'   | 10/28/2024  | 5-7.5   | 40.354353          | -104.504965 | 22.9                    |
| Background-04 @ 7.5-10'  | 10/28/2024  | 7.5-10  | 40.354353          | -104.504965 | 4.7                     |
| Background-04 @ 17.5-20' | 10/28/2024  | 17.5-20 | 40.354353          | -104.504965 | 1.3                     |
| Background-05 @ 5-7.5'   | 10/28/2024  | 5-7.5   | 40.354307          | -104.504782 | 5.5                     |
| Background-05 @ 7.5-10'  | 10/28/2024  | 7.5-10  | 40.354307          | -104.504782 | 4.9                     |
| Background-05 @ 12.5-15' | 10/28/2024  | 12.5-15 | 40.354307          | -104.504782 | 1.5                     |
| Background-06 @ 5-7.5'   | 10/28/2024  | 5-7.5   | 40.354157          | -104.504612 | 1.7                     |
| Background-06 @ 7.5-10'  | 10/28/2024  | 7.5-10  | 40.354157          | -104.504612 | 2.3                     |
| Background-06 @ 15-17.5' | 10/28/2024  | 15-17.5 | 40.354157          | -104.504612 | 0.8                     |

1. Global Positioning System (GPS) data is provided in decimal degrees using North American Datum (NAD) 83 UTMZone 13 North.

2. Volatile organic compound (VOC) concentrations are measured in the field using a photoionization detector (PID).

ppm = Parts per million

ft. = Feet

bgs = Below ground surface

TABLE 2  
SUMMARY OF VOLATILE ORGANIC SOIL CHEMISTRY DATA  
NOBLE ENERGY 100322  
BAKER STATE B #36-12, WELD COUNTY, COLORADO  
REM # 20770

| Sample ID   | Sample Date | Depth (ft) | Benzene (mg/kg) | Toluene (mg/kg) | Ethyl-Benzene (mg/kg) | Xylenes (mg/kg) | 1,2,4-Trimethyl-Benzene (mg/kg) | 1,3,5-Trimethyl-Benzene (mg/kg) | Naphthalene (mg/kg) | TPH (mg/kg) | TPH GRO (mg/kg) | TPH DRO (mg/kg) | TPH ORO (mg/kg) |
|---|-------------|------------|-----------------|-----------------|-----------------------|-----------------|---------------------------------|---------------------------------|---------------------|-------------|-----------------|-----------------|-----------------|
| ECMC Table 915-1 Limits (Residential SSL)               |             |            | 1.2             | 490             | 5.8                   | 58              | 30                              | 27                              | 2                   | 500         | 500**           |                 |                 |
| ECMC Table 915-1 Limits (Protection of Groundwater SSL) |             |            | 0.0026          | 0.69            | 0.78                  | 9.9             | 0.0081                          | 0.0087                          | 0.0038              | 500         | 500**           |                 |                 |
| WH-SS-01 @ 5'   | 8/30/2022   | 5          | <0.00200        | <0.00200        | <0.00200              | <0.00200        | <0.00200                        | <0.00200                        | <0.00067            | <500        | <0.200          | <25.0           | <100            |
| WH-SS-02 @ 5'   | 8/30/2022   | 5          | <0.00200        | <0.00200        | <0.00200              | <0.00200        | 0.00514                         | <0.00200                        | 0.00305             | <500        | <0.200          | <25.0           | <100            |
| WH-SS-03 @ 5'   | 8/30/2022   | 5          | <0.00200        | <0.00200        | <0.00200              | <0.00200        | <0.00200                        | <0.00200                        | <0.00067            | <500        | <0.200          | <25.0           | <100            |
| WH-SS-04 @ 5'   | 8/30/2022   | 5          | <0.00200        | <0.00200        | <0.00200              | <0.00200        | <0.00200                        | <0.00200                        | <0.00067            | <500        | <0.200          | <25.0           | <100            |
| WH-FS-01 @ 6'   | 8/30/2022   | 6          | <0.00200        | <0.00200        | <0.00200              | <0.00200        | <0.00200                        | <0.00200                        | <0.00067            | <500        | <0.200          | <25.0           | <100            |
| SB-01 @ 5-7.5'  | 10/28/2024  | 5-7.5      | <0.00200        | <0.00200        | <0.00200              | <0.00200        | <0.00200                        | <0.00200                        | <0.002              | <500        | <0.200          | <25.0           | <100            |
| SB-01 @ 17.5-20'  | 10/28/2024  | 17.5-20    | <0.00200        | <0.00200        | <0.00200              | <0.00200        | <0.00200                        | <0.00200                        | <0.002              | <500        | <0.200          | <25.0           | <100            |
| SB-02 @ 5-7.5'  | 10/28/2024  | 5-7.5      | <0.00200        | <0.00200        | <0.00200              | <0.00200        | <0.00200                        | <0.00200                        | <0.002              | <500        | <0.200          | <25.0           | <100            |
| SB-02 @ 7.5-10'   | 10/28/2024  | 7.5-10     | <0.00200        | <0.00200        | <0.00200              | <0.00200        | <0.00200                        | <0.00200                        | <0.002              | <500        | <0.200          | <25.0           | <100            |
| SB-03 @ 5-7.5'  | 10/28/2024  | 5-7.5      | <0.00200        | <0.00200        | <0.00200              | <0.00200        | <0.00200                        | <0.00200                        | <0.002              | <500        | <0.200          | <25.0           | <100            |
| SB-03 @ 7.5-10'   | 10/28/2024  | 7.5-10     | <0.00200        | <0.00200        | <0.00200              | <0.00200        | <0.00200                        | <0.00200                        | <0.002              | <500        | <0.200          | <25.0           | <100            |
| SB-04 @ 5-7.5'  | 10/28/2024  | 5-7.5      | <0.00200        | <0.00200        | <0.00200              | <0.00200        | <0.00200                        | <0.00200                        | <0.002              | <500        | <0.200          | <25.0           | <100            |
| SB-04 @ 7.5-10'   | 10/28/2024  | 7.5-10     | <0.00200        | <0.00200        | <0.00200              | <0.00200        | <0.00200                        | <0.00200                        | <0.002              | <500        | <0.200          | <25.0           | <100            |
| SB-05 @ 5-7.5'  | 10/28/2024  | 5-7.5      | <0.00200        | <0.00200        | <0.00200              | <0.00200        | <0.00200                        | <0.00200                        | <0.002              | <500        | <0.200          | <25.0           | <100            |

1. Bold values are equal to or exceed the ECMC Table 915-1 limit(s)
2. Red & blue highlighted soil analytical values indicate an exceedance of the referenced soil screening level (SSL)
3. \* Indicates laboratory minimum detection limit in excess of SSL
4. \*\* Summation of GRO+DRO+ORO must be less than 500 mg/kg

TABLE 3  
SUMMARY OF POLYCYCLIC AROMATIC HYDROCARBON SOIL CHEMISTRY DATA  
NOBLE ENERGY 100322  
BAKER STATE B #36-12, WELD COUNTY, COLORADO  
REM # 20770

| Sample ID   | Sample Date | Depth (ft) | Acenaphthene (mg/kg) | Anthracene (mg/kg) | Benzo (a) Anthracene (mg/kg) | Benzo (a) Pyrene (mg/kg) | Benzo (b) Fluoranthene (mg/kg) | Benzo (k) Fluoranthene (mg/kg) | Chrysene (mg/kg) | Dibenzo (a,h) Anthracene (mg/kg) | Fluoranthene (mg/kg) | Fluorene (mg/kg) | Indeno (1,2,3-cd) Pyrene (mg/kg) | Pyrene (mg/kg) | 1-Methyl - Naphthalene (mg/kg) | 2-Methyl- Naphthalene (mg/kg) |
|---|-------------|------------|----------------------|--------------------|------------------------------|--------------------------|--------------------------------|--------------------------------|------------------|----------------------------------|----------------------|------------------|----------------------------------|----------------|--------------------------------|-------------------------------|
| ECMC Table 915-1 Limits (Residential SSL)               |             |            | 360                  | 1800               | 1.1                          | 0.11                     | 1.1                            | 11                             | 110              | 0.11                             | 240                  | 240              | 1.1                              | 180            | 18                             | 24                            |
| ECMC Table 915-1 Limits (Protection of Groundwater SSL) |             |            | 0.55                 | 5.8                | 0.011                        | 0.24                     | 0.3                            | 2.9                            | 9                | 0.096                            | 8.9                  | 0.54             | 0.98                             | 1.3            | 0.006                          | 0.019                         |
| WH-SS-01 @ 5'   | 8/30/2022   | 5          | <0.00067             | <0.00067           | <0.00067                     | 0.000738                 | 0.00069                        | <0.00067                       | <0.00067         | <0.00067                         | 0.000541             | <0.00067         | <0.00067                         | <0.00067       | 0.00046                        | 0.000735                      |
| WH-SS-02 @ 5'   | 8/30/2022   | 5          | 0.00173              | <0.00067           | <0.00067                     | 0.000939                 | 0.000934                       | <0.00067                       | 0.0012           | <0.00067                         | 0.000712             | 0.00279          | <0.00067                         | 0.000987       | <b>0.00867</b>                 | 0.0184                        |
| WH-SS-03 @ 5'   | 8/30/2022   | 5          | <0.00067             | <0.00067           | <0.00067                     | 0.00101                  | 0.000996                       | <0.00067                       | 0.000678         | <0.00067                         | 0.000825             | 0.000322         | <0.00067                         | 0.000879       | 0.000404                       | 0.000895                      |
| WH-SS-04 @ 5'   | 8/30/2022   | 5          | <0.00067             | <0.00067           | <0.00067                     | <0.00067                 | <0.00067                       | <0.00067                       | <0.00067         | <0.00067                         | <0.00067             | <0.00067         | <0.00067                         | <0.00067       | <0.00067                       | <0.00067                      |
| WH-FS-01 @ 6'   | 8/30/2022   | 6          | 0.000602             | <0.00067           | <0.00067                     | 0.000879                 | 0.000925                       | <0.00067                       | 0.00135          | <0.00067                         | 0.000932             | 0.000583         | 0.000673                         | 0.00246        | 0.00169                        | 0.002                         |
| SB-01 @ 5-7.5'  | 10/28/2024  | 5-7.5      | <0.020               | <0.020             | <0.005                       | <0.020                   | <0.020                         | <0.020                         | <0.020           | <0.020                           | <0.020               | <0.020           | <0.020                           | <0.020         | <0.002                         | <0.002                        |
| SB-01 @ 17.5-20'  | 10/28/2024  | 17.5-20    | <0.020               | <0.020             | <0.005                       | <0.020                   | <0.020                         | <0.020                         | <0.020           | <0.020                           | <0.020               | <0.020           | <0.020                           | <0.020         | <0.002                         | <0.002                        |
| SB-02 @ 5-7.5'  | 10/28/2024  | 5-7.5      | <0.020               | <0.020             | <0.005                       | <0.020                   | <0.020                         | <0.020                         | <0.020           | <0.020                           | <0.020               | <0.020           | <0.020                           | <0.020         | <0.002                         | <0.002                        |
| SB-02 @ 7.5-10'   | 10/28/2024  | 7.5-10     | <0.020               | <0.020             | <0.005                       | <0.020                   | <0.020                         | <0.020                         | <0.020           | <0.020                           | <0.020               | <0.020           | <0.020                           | <0.020         | <0.002                         | <0.002                        |
| SB-03 @ 5-7.5'  | 10/28/2024  | 5-7.5      | <0.020               | <0.020             | <0.005                       | <0.020                   | <0.020                         | <0.020                         | <0.020           | <0.020                           | <0.020               | <0.020           | <0.020                           | <0.020         | <0.002                         | <0.002                        |
| SB-03 @ 7.5-10'   | 10/28/2024  | 7.5-10     | <0.020               | <0.020             | <0.005                       | <0.020                   | <0.020                         | <0.020                         | <0.020           | <0.020                           | <0.020               | <0.020           | <0.020                           | <0.020         | <0.002                         | <0.002                        |
| SB-04 @ 5-7.5'  | 10/28/2024  | 5-7.5      | <0.020               | <0.020             | <0.005                       | <0.020                   | <0.020                         | <0.020                         | <0.020           | <0.020                           | <0.020               | <0.020           | <0.020                           | <0.020         | <0.002                         | <0.002                        |
| SB-04 @ 7.5-10'   | 10/28/2024  | 7.5-10     | <0.020               | <0.020             | <0.005                       | <0.020                   | <0.020                         | <0.020                         | <0.020           | <0.020                           | <0.020               | <0.020           | <0.020                           | <0.020         | <0.002                         | <0.002                        |
| SB-05 @ 5-7.5'  | 10/28/2024  | 5-7.5      | <0.020               | <0.020             | <0.005                       | <0.020                   | <0.020                         | <0.020                         | <0.020           | <0.020                           | <0.020               | <0.020           | <0.020                           | <0.020         | <0.002                         | <0.002                        |

1. Bold values are equal to or exceed the ECMC Table 915-1 limit(s)

2. Red & blue highlighted soil analytical values indicate an exceedance of the referenced soil screening level (SSL)

3. \* Indicates laboratory minimum detection limit in excess of SSL

NA - Not analyzed

**TABLE 4**  
**SUMMARY OF SOIL SUITABILITY FOR RECLAMATION**  
**NOBLE ENERGY 100322**  
**BAKER STATE B #36-12, WELD COUNTY, COLORADO**  
**REM # 20770**

| Sample ID                                   | Sample Date | Depth (ft) | pH<br>(Standard Units) | EC (mmhos/cm) | SAR<br>(Standard Units) | Boron<br>(mg/L) |
|---|-------------|------------|------------------------|---------------|-------------------------|-----------------|
| ECMC Table 915-1 Soil Suitability Limits    |             |            | 6 - 8.3                | <4            | <6                      | 2               |
| WH-SS-01 @ 5'                               | 8/30/2022   | 5          | 7.94                   | 1.38          | 1.32                    | 0.714           |
| WH-SS-02 @ 5'                               | 8/30/2022   | 5          | 7.94                   | 1.13          | 0.418                   | 0.614           |
| WH-SS-03 @ 5'                               | 8/30/2022   | 5          | 8.07                   | 1.15          | 1.12                    | 0.558           |
| WH-SS-04 @ 5'                               | 8/30/2022   | 5          | 8.02                   | 1.63          | 2.07                    | 0.435           |
| WH-FS-01 @ 6'                               | 8/30/2022   | 6          | 7.93                   | 2.53          | 2.42                    | 0.570           |
| SB-01 @ 5-7.5'                              | 10/28/2024  | 5-7.5      | 8.04                   | 2.43          | 1.76                    | 0.574           |
| SB-01 @ 17.5-20'                            | 10/28/2024  | 17.5-20    | 8.22                   | 1.57          | <b>6.94</b>             | 0.324           |
| SB-02 @ 5-7.5'                              | 10/28/2024  | 5-7.5      | 8.05                   | <b>7.81</b>   | <b>9.73</b>             | 0.960           |
| SB-02 @ 7.5-10'                             | 10/28/2024  | 7.5-10     | 8.23                   | 2.48          | <b>7.25</b>             | 0.589           |
| SB-03 @ 5-7.5'                              | 10/28/2024  | 5-7.5      | 8.04                   | <b>6.60</b>   | <b>7.64</b>             | 0.659           |
| SB-03 @ 7.5-10'                             | 10/28/2024  | 7.5-10     | 8.21                   | 2.36          | <b>6.33</b>             | 0.601           |
| SB-04 @ 5-7.5'                              | 10/28/2024  | 5-7.5      | 7.91                   | <b>5.53</b>   | 5.53                    | 0.632           |
| SB-04 @ 7.5-10'                             | 10/28/2024  | 7.5-10     | 8.20                   | 2.16          | <b>7.23</b>             | 0.534           |
| SB-05 @ 5-7.5'                              | 10/28/2024  | 5-7.5      | 8.00                   | <b>5.54</b>   | 5.41                    | 0.957           |
| Background-02 @ 5-7.5'                      | 10/28/2024  | 5-7.5      | 8.03                   | <b>4.81</b>   | 5.98                    | 0.795           |
| Background-02 @ 7.5-10'                     | 10/28/2024  | 7.5-10     | 8.22                   | 2.24          | <b>6.40</b>             | 0.444           |
| Background-02 @ 15-17.5'                    | 10/28/2024  | 15-17.5    | 8.30                   | 1.52          | <b>6.35</b>             | 0.279           |
| Background-03 @ 5-7.5'                      | 10/28/2024  | 5-7.5      | 8.09                   | <b>9.35</b>   | <b>10.8</b>             | 1.13            |
| Background-03 @ 7.5-10'                     | 10/28/2024  | 7.5-10     | 8.25                   | 2.15          | 5.63                    | 0.343           |
| Background-03 @ 17.5-20'                    | 10/28/2024  | 17.5-20    | <b>8.34</b>            | 1.59          | <b>7.43</b>             | 0.453           |
| Background-04 @ 5-7.5'                      | 10/28/2024  | 5-7.5      | <b>8.37</b>            | 2.28          | <b>8.35</b>             | 0.689           |
| Background-04 @ 7.5-10'                     | 10/28/2024  | 7.5-10     | <b>8.43</b>            | 1.16          | <b>6.69</b>             | 0.484           |
| Background-04 @ 17.5-20'                    | 10/28/2024  | 17.5-20    | 8.29                   | 1.73          | <b>7.30</b>             | 0.374           |
| Background-05 @ 5-7.5'                      | 10/28/2024  | 5-7.5      | 8.02                   | <b>5.90</b>   | <b>6.58</b>             | 0.675           |
| Background-05 @ 7.5-10'                     | 10/28/2024  | 7.5-10     | 8.21                   | 2.53          | <b>7.40</b>             | 0.502           |
| Background-05 @ 12.5-15'                    | 10/28/2024  | 12.5-15    | 8.16                   | 1.94          | 5.96                    | 0.432           |
| Background-06 @ 5-7.5'                      | 10/28/2024  | 5-7.5      | 8.09                   | <b>5.73</b>   | <b>10.7</b>             | 1.00            |
| Background-06 @ 7.5-10'                     | 10/28/2024  | 7.5-10     | 8.09                   | <b>4.06</b>   | <b>7.52</b>             | 0.508           |
| Background-06 @ 15-17.5'                    | 10/28/2024  | 15-17.5    | 8.09                   | 3.98          | <b>6.85</b>             | 0.489           |
| Maximum Background Concentration @ 5-7.5'   |             |            | <b>8.37</b>            | <b>9.35</b>   | <b>10.8</b>             | 1.13            |
| Maximum Background Concentration @ 7.5-10'  |             |            | <b>8.43</b>            | <b>4.06</b>   | <b>7.52</b>             | 0.508           |
| Maximum Background Concentration @ 12.5-15' |             |            | 8.16                   | 1.94          | 5.96                    | 0.432           |
| Maximum Background Concentration @ 15-17.5' |             |            | 8.30                   | 3.98          | <b>6.85</b>             | 0.489           |
| Maximum Background Concentration @ 17.5-20' |             |            | <b>8.34</b>            | 1.73          | <b>7.43</b>             | 0.453           |

1. Bold values are equal to or exceed the ECMC Table 915-1 limit(s)
  2. Blue highlighted soil analytical values indicate a regulatory exceedance
- NA - Not analyzed

TABLE 5  
SUMMARY OF METALS IN SOIL CHEMISTRY DATA  
NOBLE ENERGY 100322  
BAKER STATE B #36-12, WELD COUNTY, COLORADO  
REM # 20770

| Sample ID   | Sample Date | Depth (ft) | Arsenic (mg/kg) | Barium (mg/kg) | Cadmium (mg/kg) | Chromium (VI) (mg/kg) | Copper (mg/kg) | Lead (mg/kg) | Nickel (mg/kg) | Selenium (mg/kg) | Silver (mg/kg) | Zinc (mg/kg) |
|---|-------------|------------|-----------------|----------------|-----------------|-----------------------|----------------|--------------|----------------|------------------|----------------|--------------|
| ECMC Table 915-1 Limits (Residential SSL)               |             |            | 0.68            | 15000          | 71              | 0.3                   | 3100           | 400          | 1500           | 390              | 390            | 23000        |
| ECMC Table 915-1 Limits (Protection of Groundwater SSL) |             |            | 0.29            | 82             | 0.38            | 0.00067               | 46             | 14           | 26             | 0.26             | 0.8            | 370          |
| WH-SS-02 @ 5'   | 8/30/2022   | 5          | <b>1.82</b>     | <b>117</b>     | <0.0969         | <1.22*                | <9.69          | <9.69        | <9.69          | <0.0969          | <0.0969        | <96.9        |
| SB-01 @ 5-7.5'  | 10/28/2024  | 5-7.5      | <b>8.58</b>     | 32.7           | 0.100           | <0.185*               | 12.1           | <b>15.4</b>  | 17.1           | <b>0.312</b>     | <0.0937        | 66.2         |
| SB-01 @ 17.5-20'  | 10/28/2024  | 17.5-20    | <b>7.74</b>     | 36.3           | <0.0898         | <0.177*               | 20.9           | 13.8         | 14.2           | <0.233           | <0.0898        | 57.1         |
| SB-02 @ 5-7.5'  | 10/28/2024  | 5-7.5      | <b>3.70</b>     | 39.6           | <0.0899         | <0.177*               | <8.99          | 5.49         | 5.45           | <0.234           | <0.0899        | <33.2        |
| SB-02 @ 7.5-10'   | 10/28/2024  | 7.5-10     | <b>6.60</b>     | 22.7           | <0.0899         | <0.173*               | <8.99          | 10.6         | 11.2           | <0.234           | <0.0899        | 46.9         |
| SB-03 @ 5-7.5'  | 10/28/2024  | 5-7.5      | <b>15.9</b>     | <b>512</b>     | <0.230          | <0.177*               | <23.0          | <b>20.9</b>  | <b>27.5</b>    | <0.599*          | <0.230         | 107          |
| SB-03 @ 7.5-10'   | 10/28/2024  | 7.5-10     | <b>7.25</b>     | 32.1           | <0.0940         | <0.177*               | 10.3           | 12.7         | 14.7           | <0.244           | <0.0940        | 62.3         |
| SB-04 @ 5-7.5'  | 10/28/2024  | 5-7.5      | <b>4.14</b>     | 62.2           | <0.0870         | <0.178*               | <8.70          | 6.31         | 7.26           | <0.226           | <0.0870        | <32.2        |
| SB-04 @ 7.5-10'   | 10/28/2024  | 7.5-10     | <b>6.04</b>     | 48.8           | <0.0938         | <0.187*               | <9.38          | 8.72         | 11.6           | <0.244           | <0.0938        | 45.6         |
| SB-05 @ 5-7.5'  | 10/28/2024  | 5-7.5      | <b>8.67</b>     | 47.4           | <0.0957         | <0.182*               | 10.6           | <b>14.3</b>  | 14.1           | <0.249           | <0.0957        | 58.6         |
| Background-01 @ 2'                                      | 8/30/2022   | 2          | <b>4.11</b>     | <b>191</b>     | 0.239           | NA                    | 12.1           | <b>17.5</b>  | <9.83          | <b>0.400</b>     | <0.0983        | <98.3        |
| Background-02 @ 5-7.5'                                  | 10/28/2024  | 5-7.5      | <b>9.06</b>     | 72.1           | <0.0845         | <0.175*               | 11.6           | 13.9         | 15.7           | <0.220           | <0.0845        | 74.4         |
| Background-02 @ 7.5-10'                                 | 10/28/2024  | 7.5-10     | <b>6.40</b>     | 58.6           | <0.0930         | <0.173*               | 9.93           | 9.73         | 12.5           | <0.242           | <0.0930        | 52.4         |
| Background-02 @ 15-17.5'                                | 10/28/2024  | 15-17.5    | <b>10.9</b>     | 33.9           | 0.225           | <0.187*               | 11.3           | 11.5         | 13.5           | <0.240           | <0.0922        | 55.8         |
| Background-03 @ 5-7.5'                                  | 10/28/2024  | 5-7.5      | <b>7.20</b>     | 80.8           | <0.0912         | <0.130*               | 10.5           | 12.6         | 14.3           | <0.237           | <0.0912        | 55.7         |
| Background-03 @ 7.5-10'                                 | 10/28/2024  | 7.5-10     | <b>5.03</b>     | 24.3           | <0.0907         | <0.132*               | <9.07          | 7.04         | 9.54           | <0.236           | <0.0907        | 35.4         |
| Background-03 @ 17.5-20'                                | 10/28/2024  | 17.5-20    | <b>8.34</b>     | 49.7           | 0.159           | <0.176*               | 25.5           | <b>24.4</b>  | 18.6           | <0.236           | <0.0909        | 78.0         |
| Background-04 @ 5-7.5'                                  | 10/28/2024  | 5-7.5      | <b>6.34</b>     | 25.8           | <0.0911         | <0.165*               | <9.11          | 9.04         | 11.4           | <0.237           | <0.0911        | 45.5         |
| Background-04 @ 7.5-10'                                 | 10/28/2024  | 7.5-10     | <b>6.42</b>     | <b>114</b>     | <0.0961         | <0.180*               | <9.61          | 9.48         | 13.3           | <0.250           | <0.0961        | 51.3         |
| Background-04 @ 17.5-20'                                | 10/28/2024  | 17.5-20    | <b>7.35</b>     | 56.5           | 0.0962          | <0.123*               | 19.6           | <b>17.3</b>  | 16.5           | <0.248           | <0.0953        | 69.2         |
| Background-05 @ 5-7.5'                                  | 10/28/2024  | 5-7.5      | <b>5.97</b>     | 35.8           | <0.0908         | <0.136*               | <9.08          | 9.77         | 10.3           | <0.236           | <0.0908        | 44.6         |
| Background-05 @ 7.5-10'                                 | 10/28/2024  | 7.5-10     | <b>7.51</b>     | 35.6           | <0.0840         | <0.146*               | <8.40          | 11.6         | 14.7           | <0.218           | <0.0840        | 53.6         |
| Background-05 @ 12.5-15'                                | 10/28/2024  | 12.5-15    | <b>11.3</b>     | 30.5           | <0.0865         | <0.144*               | 9.86           | 11.4         | 12.2           | <0.225           | <0.0865        | 53.1         |
| Background-06 @ 5-7.5'                                  | 10/28/2024  | 5-7.5      | <b>5.75</b>     | 30.4           | <0.0897         | <0.132*               | <8.97          | 9.60         | 13.0           | <0.233           | <0.0897        | 51.5         |
| Background-06 @ 7.5-10'                                 | 10/28/2024  | 7.5-10     | <b>4.60</b>     | 23.7           | <0.0983         | <0.149*               | <9.83          | 7.79         | 9.57           | <0.256           | <0.0983        | 40.4         |
| Background-06 @ 15-17.5'                                | 10/28/2024  | 15-17.5    | <b>10.8</b>     | 39.2           | <0.0860         | <0.145*               | 14.7           | 13.7         | 14.8           | <0.224           | <0.0860        | 59.8         |
| 125% Maximum Background Concentration @ 2'              |             |            | <b>5.14</b>     | <b>239</b>     | 0.299           | NA                    | 15.1           | <b>21.9</b>  |                | <b>0.500</b>     |                |              |
| 125% Maximum Background Concentration @ 5-7.5'          |             |            | <b>11.3</b>     | <b>101</b>     |                 |                       | 14.5           | <b>17.4</b>  | 19.6           |                  |                | 93.0         |
| 125% Maximum Background Concentration @ 7.5-10'         |             |            | <b>9.39</b>     | <b>143</b>     |                 |                       | 12.4           | <b>14.5</b>  | 18.4           |                  |                | 67.0         |
| 125% Maximum Background Concentration @ 12.5-15'        |             |            | <b>14.1</b>     | 38.1           |                 |                       | 12.3           | <b>14.3</b>  | 15.3           |                  |                | 66.4         |
| 125% Maximum Background Concentration @ 15-17.5'        |             |            | <b>13.6</b>     | 49.0           | 0.281           |                       | 18.4           | <b>17.1</b>  | 18.5           |                  |                | 74.8         |
| 125% Maximum Background Concentration @ 17.5-20'        |             |            | <b>10.4</b>     | 70.6           | 0.199           |                       | 31.9           | <b>30.5</b>  | 23.3           |                  |                | 97.5         |

1. Bold values are equal to or exceed the ECMC Table 915-1 limit(s)

2. Red & blue highlighted soil analytical values indicate an exceedance of the referenced soil screening level (SSL)

\* Indicates laboratory minimum detection limit in excess of SSL

NA - Not analyzed

## **ATTACHMENT A**

### **Soil Boring Logs**

| DEPTH (FT) | LITHOLOGY  | SAMPLE      |      |        | OVM/OVA (PPM) | BLOW COUNT (per 0.5 FT) | DEPTH (FT) | WELL CONSTRUCTION DETAIL | COMMENTS   |
|------------|--|-------------|------|--------|---------------|-------------------------|------------|--------------------------|--|
|            | DESCRIPTION  | GRAPHIC LOG | TYPE | NUMBER |               |                         |            |                          |  |
| 0          | (0-6') clayey SAND - brown, dry, loose to medium dense, fine grained, poorly-graded with ~25% clay, N/O, N/S           | SC          | DP   | 1      | 75            | 1.0                     | N/A        | Well not completed       |  |
|            |  |             |      |        |               | 1.3                     |            |                          |  |
| 5          | @5' - CaCO3 lens   | SC          | DP   | 2      | 100           | 1.6                     | N/A        |                          |  |
|            | (6-10') clayey SAND - light brown, dry to moist, medium dense, fine grained, poorly-graded with ~30% clay, N/O, N/S    |             |      |        |               | 2.5                     |            |                          |  |
| 10         | (10-12.5') sandy CLAY - brown, moist, soft, low plasticity, poorly-graded with ~20% sand, N/O, N/S                     | CL          | DP   | 3      | 100           | 2.7                     | N/A        |                          |  |
|            | (12.5-15') sandy CLAY - brown/orange/grey, moist, medium stiff, low plasticity, poorly-graded with ~20% sand, N/O, N/S |             |      |        |               | 2.7                     |            |                          |  |
| 15         | (15-17.5') sandy CLAY - brown/orange, moist, stiff, low plasticity, poorly-graded with ~10% sand, N/O, N/S             |             |      |        |               | 2.6                     |            |                          |  |
|            | (17.5-20') sandy CLAY - brown/orange, moist, very stiff, low plasticity, poorly-graded with ~10% sand, N/O, N/S        |             |      |        |               | 2.2                     |            |                          |  |
| 20         | BoB @ 20'  |             |      |        |               |                         |            |                          |  |
| 25         |  |             |      |        |               |                         |            |                          | HA - Hand Auger<br>DP - Direct Push<br>HC - Hydrocarbon<br>BoB - Bottom of Boring<br>N/O - no odor<br>N/S - no staining<br>TOC - top of casing<br>bgs - below ground surface |
| 30         |  |             |      |        |               |                         |            |                          |  |

|   |                                      |
|---|--------------------------------------|
| START/COMPLETION DATE: 10/28/24                               | SAND PACK INTERVAL (FEET): N/A       |
| PROJECT: BAKER STATE B #36-12                                 | BENTONITE/GROUT INTERVAL (FEET): N/A |
| LOGGED BY: R. SEYLER  | WELL SCREEN INTERVAL (FEET): N/A     |
| DRILLING COMPANY/EQUIPMENT: EAGLE/GEOPROBE                    | WELL DIAMETER (INCHES): N/A          |
| BORING DEPTH (FEET): 20                                       | WELL DEPTH (FEET): N/A               |
| PID INSTRUMENT: MiniRAE 3000 - PID #15                        |                                      |
| TIME STARTED/COMPLETED: 0915/0950                             |                                      |
| SAMPLE COLLECTION DEPTH (FT.)/TIME: 5-7.5/0924 & 17.5-20/0942 |                                      |

| DEPTH (FT) | LITHOLOGY  | SAMPLE      |      |        |            | OVM/OVA (PPM) | BLOW COUNT (per 0.5 FT) | DEPTH (FT)         | WELL CONSTRUCTION DETAIL | COMMENTS |
|------------|--|-------------|------|--------|------------|---------------|-------------------------|--------------------|--------------------------|----------|
|            | DESCRIPTION  | GRAPHIC LOG | TYPE | NUMBER | RECOVERY % |               |                         |                    |                          |          |
| 0          | (0-6') clayey SAND - brown, dry, loose, fine grained, poorly-graded with ~25% clay, N/O, N/S                 | SC          | DP   | 1      | 90         | 1.1           | N/A                     | Well not completed |                          |          |
|            |  |             |      |        |            | 2.0           |                         |                    |                          |          |
| 5          | @5' - well-graded SAND lens  | SW          |      |        |            |               |                         |                    |                          |          |
|            | (6-9') clayey SAND - brown/orange, dry to moist, loose, fine grained, poorly-graded with ~30% clay, N/O, N/S | SC          | DP   | 2      | 100        | 0.9           | N/A                     |                    |                          |          |
|            | (9-10') sandy CLAY - brown, moist, medium stiff, low plasticity, poorly-graded with ~20% sand, N/O, N/S      | CL          |      |        |            | 1.7           |                         |                    |                          |          |
| 10         | BoB @ 10'  |             |      |        |            |               |                         |                    |                          |          |
| 15         |  |             |      |        |            |               |                         |                    |                          |          |
| 20         |  |             |      |        |            |               |                         |                    |                          |          |
| 25         |  |             |      |        |            |               |                         |                    |                          |          |
| 30         |  |             |      |        |            |               |                         |                    |                          |          |

HA - Hand Auger  
 DP - Direct Push  
 HC - Hydrocarbon  
 BoB - Bottom of Boring  
 N/O - no odor  
 N/S - no staining  
 TOC - top of casing  
 bgs - below ground surface

|  |                                      |
|--|--------------------------------------|
| START/COMPLETION DATE: 10/28/24                              | SAND PACK INTERVAL (FEET): N/A       |
| PROJECT: BAKER STATE B #36-12                                | BENTONITE/GROUT INTERVAL (FEET): N/A |
| LOGGED BY: R. SEYLER   | WELL SCREEN INTERVAL (FEET): N/A     |
| DRILLING COMPANY/EQUIPMENT: EAGLE/GEOPROBE                   | WELL DIAMETER (INCHES): N/A          |
| BORING DEPTH (FEET): 10                                      | WELL DEPTH (FEET): N/A               |
| PID INSTRUMENT: MiniRAE 3000 - PID #15                       |                                      |
| TIME STARTED/COMPLETED: 1000/1009                            |                                      |
| SAMPLE COLLECTION DEPTH (FT.)/TIME: 5-7.5/1006 & 7.5-10/1006 |                                      |

| DEPTH (FT) | LITHOLOGY  | SAMPLE      |      |        |            | OVM/OVA (PPM) | BLOW COUNT (per 0.5 FT) | DEPTH (FT)         | WELL CONSTRUCTION DETAIL | COMMENTS |
|------------|--|-------------|------|--------|------------|---------------|-------------------------|--------------------|--------------------------|----------|
|            | DESCRIPTION  | GRAPHIC LOG | TYPE | NUMBER | RECOVERY % |               |                         |                    |                          |          |
| 0          | (0-6') clayey SAND - brown, dry, loose, fine grained, poorly-graded with ~25% clay, N/O, N/S                 | SC          | DP   | 1      | 90         | 3.2           | N/A                     | Well not completed |                          |          |
|            |  |             |      |        |            | 3.5           |                         |                    |                          |          |
| 5          | @5' - well-graded SAND lens  | SW          |      |        |            |               |                         |                    |                          |          |
|            | (6-9') clayey SAND - brown/orange, dry to moist, loose, fine grained, poorly-graded with ~30% clay, N/O, N/S | SC          | DP   | 2      | 100        | 3.1           | N/A                     |                    |                          |          |
|            | (9-10') sandy CLAY - brown, moist, medium stiff, low plasticity, poorly-graded with ~20% sand, N/O, N/S      | CL          |      |        |            | 3.8           |                         |                    |                          |          |
| 10         | BoB @ 10'  |             |      |        |            |               |                         |                    |                          |          |
| 15         |  |             |      |        |            |               |                         |                    |                          |          |
| 20         |  |             |      |        |            |               |                         |                    |                          |          |
| 25         |  |             |      |        |            |               |                         |                    |                          |          |
| 30         |  |             |      |        |            |               |                         |                    |                          |          |

HA - Hand Auger  
 DP - Direct Push  
 HC - Hydrocarbon  
 BoB - Bottom of Boring  
 N/O - no odor  
 N/S - no staining  
 TOC - top of casing  
 bgs - below ground surface

|  |                                      |
|--|--------------------------------------|
| START/COMPLETION DATE: 10/28/24                              | SAND PACK INTERVAL (FEET): N/A       |
| PROJECT: BAKER STATE B #36-12                                | BENTONITE/GROUT INTERVAL (FEET): N/A |
| LOGGED BY: R. SEYLER   | WELL SCREEN INTERVAL (FEET): N/A     |
| DRILLING COMPANY/EQUIPMENT: EAGLE/GEOPROBE                   | WELL DIAMETER (INCHES): N/A          |
| BORING DEPTH (FEET): 10                                      | WELL DEPTH (FEET): N/A               |
| PID INSTRUMENT: MiniRAE 3000 - PID #15                       |                                      |
| TIME STARTED/COMPLETED: 1009/1017                            |                                      |
| SAMPLE COLLECTION DEPTH (FT.)/TIME: 5-7.5/1017 & 7.5-10/1017 |                                      |

| DEPTH (FT) | LITHOLOGY  | SAMPLE      |      |        |            | OVM/OVA (PPM) | BLOW COUNT (per 0.5 FT) | DEPTH (FT)         | WELL CONSTRUCTION DETAIL | COMMENTS |
|------------|--|-------------|------|--------|------------|---------------|-------------------------|--------------------|--------------------------|----------|
|            | DESCRIPTION  | GRAPHIC LOG | TYPE | NUMBER | RECOVERY % |               |                         |                    |                          |          |
| 0          | (0-6') clayey SAND - brown, dry, loose, fine grained, poorly-graded with ~25% clay, N/O, N/S                 | SC          | DP   | 1      | 85         | 3.9           | N/A                     | Well not completed |                          |          |
|            | @4' - CaCO3 lens   |             |      |        |            | 4.7           |                         |                    |                          |          |
| 5          | @6' - well-graded SAND lens  | SW          | DP   | 2      | 100        | 2.7           | N/A                     |                    |                          |          |
|            | (6-9') clayey SAND - brown/orange, dry to moist, loose, fine grained, poorly-graded with ~30% clay, N/O, N/S | SC          |      |        |            | 3.5           |                         |                    |                          |          |
|            | (9-10') sandy CLAY - brown, moist, medium stiff, low plasticity, poorly-graded with ~20% sand, N/O, N/S      | CL          |      |        |            |               |                         |                    |                          |          |
| 10         | BoB @ 10'  |             |      |        |            |               |                         |                    |                          |          |

HA - Hand Auger  
 DP - Direct Push  
 HC - Hydrocarbon  
 BoB - Bottom of Boring  
 N/O - no odor  
 N/S - no staining  
 TOC - top of casing  
 bgs - below ground surface

|  |                                      |
|--|--------------------------------------|
| START/COMPLETION DATE: 10/28/24                              | SAND PACK INTERVAL (FEET): N/A       |
| PROJECT: BAKER STATE B #36-12                                | BENTONITE/GROUT INTERVAL (FEET): N/A |
| LOGGED BY: R. SEYLER   | WELL SCREEN INTERVAL (FEET): N/A     |
| DRILLING COMPANY/EQUIPMENT: EAGLE/GEOPROBE                   | WELL DIAMETER (INCHES): N/A          |
| BORING DEPTH (FEET): 10                                      | WELL DEPTH (FEET): N/A               |
| PID INSTRUMENT: MiniRAE 3000 - PID #15                       |                                      |
| TIME STARTED/COMPLETED: 1017/1026                            |                                      |
| SAMPLE COLLECTION DEPTH (FT.)/TIME: 5-7.5/1025 & 7.5-10/1025 |                                      |

| DEPTH (FT) | LITHOLOGY   | SAMPLE      |      |        |            | OVM/OVA (PPM) | BLOW COUNT (per 0.5 FT) | DEPTH (FT)         | WELL CONSTRUCTION DETAIL | COMMENTS |
|------------|---|-------------|------|--------|------------|---------------|-------------------------|--------------------|--------------------------|----------|
|            | DESCRIPTION   | GRAPHIC LOG | TYPE | NUMBER | RECOVERY % |               |                         |                    |                          |          |
| 0          | (0-6') clayey SAND - brown, dry, loose, fine grained, poorly-graded with ~25% clay, N/O, N/S  | SC          | DP   | 1      | 95         | 2.7           | N/A                     | Well not completed |                          |          |
|            |   |             |      |        |            | 5.0           |                         |                    |                          |          |
| 5          | @5' - well-graded SAND lens<br>(6-7.5') clayey SAND - brown/orange, dry to moist, loose, fine grained, poorly-graded with ~30% clay, N/O, N/S | SW          |      |        |            |               |                         |                    |                          |          |
|            | @7.5' - Refusal   | SC          | DP   | 2      | 75         | 3.6           | N/A                     |                    |                          |          |
|            | BoB @ 7.5'  |             |      |        |            |               |                         |                    |                          |          |

HA - Hand Auger  
 DP - Direct Push  
 HC - Hydrocarbon  
 BoB - Bottom of Boring  
 N/O - no odor  
 N/S - no staining  
 TOC - top of casing  
 bgs - below ground surface

|  |                                      |
|--|--------------------------------------|
| START/COMPLETION DATE: 10/28/24                | SAND PACK INTERVAL (FEET): N/A       |
| PROJECT: BAKER STATE B #36-12                  | BENTONITE/GROUT INTERVAL (FEET): N/A |
| LOGGED BY: R. SEYLER                           | WELL SCREEN INTERVAL (FEET): N/A     |
| DRILLING COMPANY/EQUIPMENT: EAGLE/GEOPROBE     | WELL DIAMETER (INCHES): N/A          |
| BORING DEPTH (FEET): 10                        | WELL DEPTH (FEET): N/A               |
| PID INSTRUMENT: MiniRAE 3000 - PID #15         |                                      |
| TIME STARTED/COMPLETED: 1026/1036              |                                      |
| SAMPLE COLLECTION DEPTH (FT.)/TIME: 5-7.5/1034 |                                      |

| DEPTH (FT) | LITHOLOGY  | SAMPLE   |  |        |            | OVM/OVA (PPM) | BLOW COUNT (per 0.5 FT) | DEPTH (FT) | WELL CONSTRUCTION DETAIL | COMMENTS |
|------------|--|--|--|--------|------------|---------------|-------------------------|------------|--------------------------|----------|
|            | DESCRIPTION  | GRAPHIC LOG  | TYPE   | NUMBER | RECOVERY % |               |                         |            |                          |          |
| 0          | (0-7') clayey SAND - brown, dry to moist, loose, fine to medium grained, well-graded with ~10% clay, N/O, N/S                | SC   | DP   | 1      | 80         | 4.3           | N/A                     | 5          | Well not completed       |          |
| 5          |  |  |  |        |            | 5.4           |                         |            |                          |          |
| 7          |  | (7-10') sandy CLAY - brown/orange, moist, soft to medium stiff, low plasticity, poorly-graded with ~20% sand, N/O, N/S | DP   | 2      | 100        | 4.9           | N/A                     | 10         |                          |          |
| 10         |  |  |  |        |            | 6.5           |                         |            |                          |          |
| 12.5       |  |  | (10-12.5') sandy CLAY - brown, moist, medium stiff, low plasticity, poorly-graded with ~10% sand, N/O, N/S | DP     | 3          | 100           | 6.4                     | N/A        |                          |          |
| 15         | 6.6  |  |  |        |            |               |                         |            |                          |          |
| 17.5       | (12.5-17.5') sandy CLAY - brown/orange/grey, moist, soft, low plasticity, poorly-graded with ~10% sand, N/O, N/S, Fe present | DP   | 4  | 100    | 6.6        | N/A           | 17.5                    |            |                          |          |
| 17.5       | @17.5' - Refusal   | DP   | 5  | 75     | 5.6        | N/A           | 17.5                    |            |                          |          |
| 17.5       | BoB @ 17.5'  |  |  |        |            |               |                         |            |                          |          |
| 20         |  |  |  |        |            |               |                         |            |                          |          |
| 25         |  |  |  |        |            |               |                         |            |                          |          |
| 30         |  |  |  |        |            |               |                         |            |                          |          |

HA - Hand Auger  
 DP - Direct Push  
 HC - Hydrocarbon  
 BoB - Bottom of Boring  
 N/O - no odor  
 N/S - no staining  
 TOC - top of casing  
 bgs - below ground surface

|  |                                      |
|--|--------------------------------------|
| START/COMPLETION DATE: 10/28/24  | SAND PACK INTERVAL (FEET): N/A       |
| PROJECT: BAKER STATE B #36-12  | BENTONITE/GROUT INTERVAL (FEET): N/A |
| LOGGED BY: R. SEYLER   | WELL SCREEN INTERVAL (FEET): N/A     |
| DRILLING COMPANY/EQUIPMENT: EAGLE/GEOPROBE                                   | WELL DIAMETER (INCHES): N/A          |
| BORING DEPTH (FEET): 17.5  | WELL DEPTH (FEET): N/A               |
| PID INSTRUMENT: MiniRAE 3000 - PID #15                                       |                                      |
| TIME STARTED/COMPLETED: 1105/1130  |                                      |
| SAMPLE COLLECTION DEPTH (FT.)/TIME: 5-7.5/1114 & 7.5-10/1114<br>15-17.5/1127 |                                      |

| DEPTH (FT) | LITHOLOGY   | SAMPLE      |      |        | OVM/OVA (PPM) | BLOW COUNT (per 0.5 FT) | DEPTH (FT) | WELL CONSTRUCTION DETAIL | COMMENTS |
|------------|---|-------------|------|--------|---------------|-------------------------|------------|--------------------------|----------|
|            | DESCRIPTION   | GRAPHIC LOG | TYPE | NUMBER |               |                         |            |                          |          |
| 0          | (0-7') clayey SAND - brown, dry to moist, loose, fine to medium grained, well-graded with ~10% clay, N/O, N/S | SC          | DP   | 1      | 85            | 3.2                     | N/A        | Well not completed       |          |
| 2.5        |   |             |      |        |               | 2.4                     |            |                          |          |
| 5          |   | CL          | DP   | 2      | 100           | 2.6                     | N/A        |                          |          |
| 7.5        |   |             |      |        |               | 4.2                     |            |                          |          |
| 10         |   | CL          | DP   | 3      | 100           | 3.9                     | N/A        |                          |          |
| 12.5       |   |             |      |        |               | 3.4                     |            |                          |          |
| 15         | CL  | DP          | 4    | 100    | 3.4           | N/A                     |            |                          |          |
| 17.5       |   |             |      |        | 2.1           |                         |            |                          |          |
| 20         | CL  | DP          | 5    | 100    | 2.1           | N/A                     |            |                          |          |
| 22.5       |   |             |      |        | 0.8           |                         |            |                          |          |
| 20         | BoB @ 20'   |             |      |        |               |                         |            |                          |          |

HA - Hand Auger  
 DP - Direct Push  
 HC - Hydrocarbon  
 BoB - Bottom of Boring  
 N/O - no odor  
 N/S - no staining  
 TOC - top of casing  
 bgs - below ground surface

|  |                                      |
|--|--------------------------------------|
| START/COMPLETION DATE: 10/28/24  | SAND PACK INTERVAL (FEET): N/A       |
| PROJECT: BAKER STATE B #36-12  | BENTONITE/GROUT INTERVAL (FEET): N/A |
| LOGGED BY: R. SEYLER   | WELL SCREEN INTERVAL (FEET): N/A     |
| DRILLING COMPANY/EQUIPMENT: EAGLE/GEOPROBE                                   | WELL DIAMETER (INCHES): N/A          |
| BORING DEPTH (FEET): 20  | WELL DEPTH (FEET): N/A               |
| PID INSTRUMENT: MiniRAE 3000 - PID #15                                       |                                      |
| TIME STARTED/COMPLETED: 1130/1210  |                                      |
| SAMPLE COLLECTION DEPTH (FT.)/TIME: 5-7.5/1144 & 7.5-10/1144<br>17.5-20/1206 |                                      |

| DEPTH (FT) | LITHOLOGY  | SAMPLE      |      |        | OVM/OVA (PPM) | BLOW COUNT (per 0.5 FT) | DEPTH (FT) | WELL CONSTRUCTION DETAIL | COMMENTS |
|------------|--|-------------|------|--------|---------------|-------------------------|------------|--------------------------|----------|
|            | DESCRIPTION  | GRAPHIC LOG | TYPE | NUMBER |               |                         |            |                          |          |
| 0          | (0-5') clayey SAND - brown, dry to moist, loose, fine to medium grained, well-graded with ~10% clay, N/O, N/S                        | SC          | DP   | 1      | 95            | 7.2                     | N/A        | Well not completed       |          |
|            | @~4' - CaCO3 lens  |             |      |        |               | 3.5                     |            |                          |          |
| 5          | (5-7') clayey SAND - grey, dry to moist, loose, fine to medium grained, well-graded with ~10% clay, N/O, N/S                         | DP          | 2    | 100    | 100           | 22.9                    | N/A        |                          |          |
|            | (7-10') sandy CLAY - brown/orange, moist, soft, low plasticity, poorly-graded with ~20% sand, N/O, N/S                               |             |      |        |               | 4.7                     |            |                          |          |
| 10         | (10-12.5') sandy CLAY - brown, moist, soft, low plasticity, poorly-graded with ~10% sand, N/O, N/S, Fe present                       | CL          | DP   | 3      | 100           | 3.5                     | N/A        |                          |          |
|            | @~13' - CaCO3 lens   |             |      |        |               |                         |            |                          |          |
|            | (12.5-17.5') sandy CLAY - brown/orange/grey, moist, soft, low plasticity, poorly-graded with ~10% sand, N/O, N/S, Fe present         | DP          | 4    | 100    | 100           | 2.4                     | N/A        |                          |          |
|            |  |             |      |        |               |                         |            |                          |          |
| 15         |  | DP          | 5    | 100    | 100           | 0.6                     | N/A        |                          |          |
|            |  |             |      |        |               |                         |            |                          |          |
|            | (17.5-20') sandy CLAY - dark brown/orange, moist, medium stiff to very stiff, low plasticity, poorly-graded with ~20% sand, N/O, N/S | DP          | 6    | 100    | 100           | 1.3                     | N/A        |                          |          |
|            |  |             |      |        |               |                         |            |                          |          |
| 20         | BoB @ 20'  |             |      |        |               |                         |            |                          |          |
| 25         |  |             |      |        |               |                         |            |                          |          |
| 30         |  |             |      |        |               |                         |            |                          |          |

HA - Hand Auger  
 DP - Direct Push  
 HC - Hydrocarbon  
 BoB - Bottom of Boring  
 N/O - no odor  
 N/S - no staining  
 TOC - top of casing  
 bgs - below ground surface

|  |                                      |
|--|--------------------------------------|
| START/COMPLETION DATE: 10/28/24  | SAND PACK INTERVAL (FEET): N/A       |
| PROJECT: BAKER STATE B #36-12  | BENTONITE/GROUT INTERVAL (FEET): N/A |
| LOGGED BY: R. SEYLER   | WELL SCREEN INTERVAL (FEET): N/A     |
| DRILLING COMPANY/EQUIPMENT: EAGLE/GEOPROBE                                   | WELL DIAMETER (INCHES): N/A          |
| BORING DEPTH (FEET): 20  | WELL DEPTH (FEET): N/A               |
| PID INSTRUMENT: MiniRAE 3000 - PID #15                                       |                                      |
| TIME STARTED/COMPLETED: 1230/1300  |                                      |
| SAMPLE COLLECTION DEPTH (FT.)/TIME: 5-7.5/1244 & 7.5-10/1244<br>17.5-20/1300 |                                      |

| DEPTH (FT) | LITHOLOGY  | SAMPLE      |      |        | OVM/OVA (PPM) | BLOW COUNT (per 0.5 FT) | DEPTH (FT) | WELL CONSTRUCTION DETAIL | COMMENTS |
|------------|--|-------------|------|--------|---------------|-------------------------|------------|--------------------------|----------|
|            | DESCRIPTION  | GRAPHIC LOG | TYPE | NUMBER |               |                         |            |                          |          |
| 0          | (0-7') clayey SAND - brown, dry to moist, loose, fine to medium grained, well-graded with ~10% clay, N/O, N/S              | SC          | DP   | 1      | 90            | 4.0                     | N/A        | Well not completed       |          |
|            | @~4' - CaCO3 lens  |             |      |        |               | 5.9                     |            |                          |          |
| 5          | (7-10') sandy CLAY - brown/orange, moist, soft, low plasticity, poorly-graded with ~20% sand, N/O, N/S                     | DP          | 2    | 100    | 5.5           | N/A                     |            |                          |          |
|            |  |             |      |        | 4.9           |                         |            |                          |          |
| 10         | (10-12.5') sandy CLAY - brown, moist, soft, low plasticity, poorly-graded with ~10% sand, N/O, N/S, Fe present             | CL          | DP   | 3      | 100           | 4.1                     | N/A        |                          |          |
|            | (12.5-15') sandy CLAY - brown/orange/grey, moist, soft, low plasticity, poorly-graded with ~10% sand, N/O, N/S, Fe present |             |      |        |               | 1.5                     |            | N/A                      |          |
| 15         | BoB @ 15'  |             |      |        |               |                         |            |                          |          |
| 20         |  |             |      |        |               |                         |            |                          |          |
| 25         |  |             |      |        |               |                         |            |                          |          |
| 30         |  |             |      |        |               |                         |            |                          |          |

HA - Hand Auger  
 DP - Direct Push  
 HC - Hydrocarbon  
 BoB - Bottom of Boring  
 N/O - no odor  
 N/S - no staining  
 TOC - top of casing  
 bgs - below ground surface

|  |                                      |
|--|--------------------------------------|
| START/COMPLETION DATE: 10/28/24  | SAND PACK INTERVAL (FEET): N/A       |
| PROJECT: BAKER STATE B #36-12  | BENTONITE/GROUT INTERVAL (FEET): N/A |
| LOGGED BY: R. SEYLER   | WELL SCREEN INTERVAL (FEET): N/A     |
| DRILLING COMPANY/EQUIPMENT: EAGLE/GEOPROBE                                   | WELL DIAMETER (INCHES): N/A          |
| BORING DEPTH (FEET): 15  | WELL DEPTH (FEET): N/A               |
| PID INSTRUMENT: MiniRAE 3000 - PID #15                                       |                                      |
| TIME STARTED/COMPLETED: 1300/1335  |                                      |
| SAMPLE COLLECTION DEPTH (FT.)/TIME: 5-7.5/1310 & 7.5-10/1310<br>12.5-15/1335 |                                      |

| DEPTH (FT) | LITHOLOGY  | SAMPLE      |      |        | OVM/OVA (PPM) | BLOW COUNT (per 0.5 FT) | DEPTH (FT) | WELL CONSTRUCTION DETAIL | COMMENTS |
|------------|--|-------------|------|--------|---------------|-------------------------|------------|--------------------------|----------|
|            | DESCRIPTION  | GRAPHIC LOG | TYPE | NUMBER |               |                         |            |                          |          |
| 0          | (0-7') clayey SAND - brown, dry to moist, loose, fine to medium grained, well-graded with ~10% clay, N/O, N/S                | SC          | DP   | 1      | 80            | 1.0                     | N/A        | Well not completed       |          |
|            |  |             |      |        |               | 1.5                     |            |                          |          |
| 5          | (7-10') sandy CLAY - brown/orange, moist, soft, low plasticity, poorly-graded with ~20% sand, N/O, N/S                       |             | DP   | 2      | 100           | 1.7                     | N/A        |                          |          |
|            |  |             |      |        |               | 2.3                     |            |                          |          |
| 10         | (10-12.5') sandy CLAY - brown, moist, soft, low plasticity, poorly-graded with ~10% sand, N/O, N/S, Fe present               |             | DP   | 3      | 100           | 1.1                     | N/A        |                          |          |
|            |  |             |      |        |               |                         |            |                          |          |
| 15         | (12.5-17.5') sandy CLAY - brown/orange/grey, moist, soft, low plasticity, poorly-graded with ~10% sand, N/O, N/S, Fe present | CL          | DP   | 4      | 100           | 1.3                     | N/A        |                          |          |
|            |  |             |      |        |               |                         |            |                          |          |
|            | @17.5' - Refusal   |             | DP   | 5      | 100           | 0.8                     | N/A        |                          |          |
|            |  |             |      |        |               |                         |            |                          |          |
| 20         | BoB @ 17.5'  |             |      |        |               |                         |            |                          |          |
| 25         |  |             |      |        |               |                         |            |                          |          |
| 30         |  |             |      |        |               |                         |            |                          |          |

HA - Hand Auger  
 DP - Direct Push  
 HC - Hydrocarbon  
 BoB - Bottom of Boring  
 N/O - no odor  
 N/S - no staining  
 TOC - top of casing  
 bgs - below ground surface

|  |                                      |
|--|--------------------------------------|
| START/COMPLETION DATE: 10/28/24  | SAND PACK INTERVAL (FEET): N/A       |
| PROJECT: BAKER STATE B #36-12  | BENTONITE/GROUT INTERVAL (FEET): N/A |
| LOGGED BY: R. SEYLER   | WELL SCREEN INTERVAL (FEET): N/A     |
| DRILLING COMPANY/EQUIPMENT: EAGLE/GEOPROBE                                   | WELL DIAMETER (INCHES): N/A          |
| BORING DEPTH (FEET): 17.5  | WELL DEPTH (FEET): N/A               |
| PID INSTRUMENT: MiniRAE 3000 - PID #15                                       |                                      |
| TIME STARTED/COMPLETED: 1335/1400  |                                      |
| SAMPLE COLLECTION DEPTH (FT.)/TIME: 5-7.5/1346 & 7.5-10/1346<br>15-17.5/1400 |                                      |