

Form 19 Data Package

Amoco 44-17
Remediation #: 38361



Prepared for:
Extraction Oil & Gas - 10459

February 5, 2025

N2S2SE Sec 17 1S 65W

Facility ID: 320283
API #: 001-08859

Photograph Log



Photographic Log

Site Name: Amoco 44-17 (Rem# 38361)

Photographer: C. Pursell / Stantec Consulting Services Inc.

Date: February 4, 2025



Photo #1 View of the wellhead floor sample location

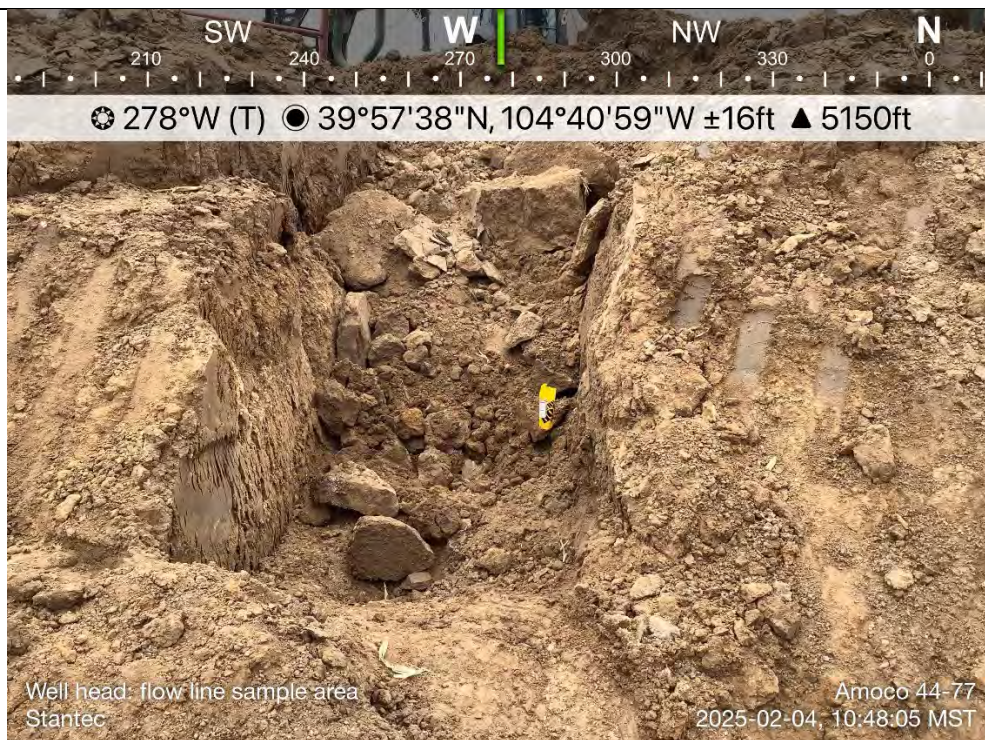


Photo #2 View of the well head flow line sample location

Photographic Log

Site Name: Amoco 44-17 (Rem# 38361)

Photographer: C. Pursell / Stantec Consulting Services Inc.

Date: February 4, 2025

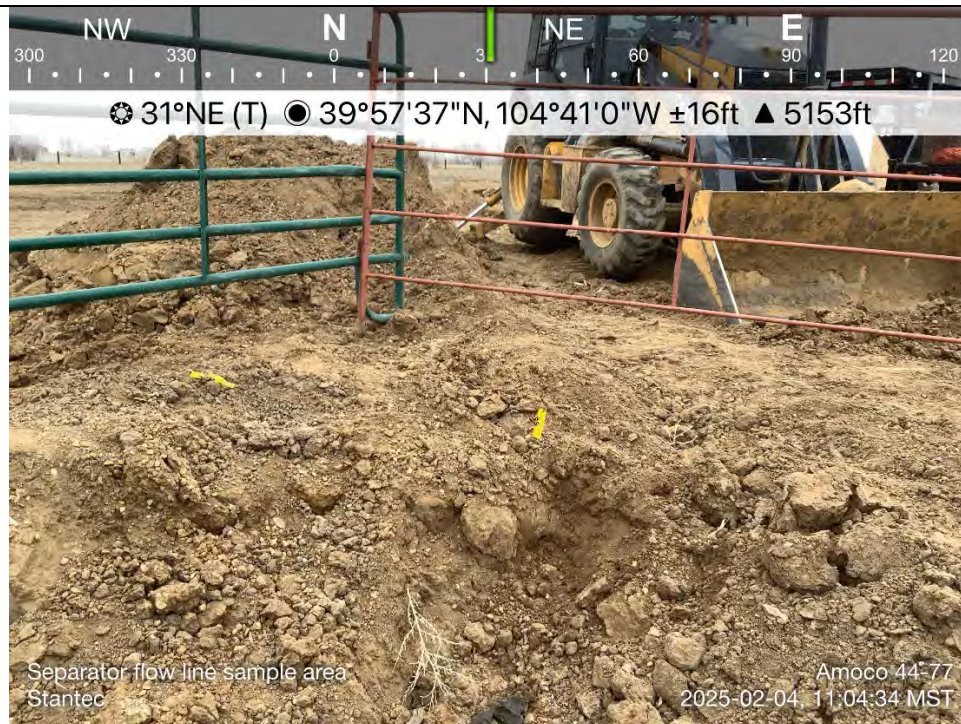


Photo #3 View of the flowline @ separator sample location



Photo #4 View of the AST sample area

Photographic Log

Site Name: Amoco 44-17 (Rem# 38361)

Photographer: C. Pursell / Stantec Consulting Services Inc.

Date: February 4, 2025



Photo #5 View of the separator sample



Photo #6 View of the produced water vessel sample locations

Photographic Log

Site Name: Amoco 44-17 (Rem# 38361)

Photographer: C. Pursell / Stantec Consulting Services Inc.

Date: February 4, 2025



Figure





--- Approximate Excavation Extents

⊗ Background Sample Location

⊗ Soil Samples with Elevated PID readings, HC odor or staining

⊗ Soil Samples without Elevated PID readings, HC odor or staining

Notes:

Soil Sample Locations and Approximate Excavation Extents were collected using a Trimble R1 Data Collector. Serial Number GNSS:91585

HC - Hydrocarbon
PID - Photoionization Detector

N

04080

Feet

01530

Meters

(At original document size of 11x17) 1:480

Notes

1. Coordinate System: WGS 1984 Web Mercator Auxiliary Sphere

2. Background: World Terrain Base: Sources: Esri, USGS, NOAA

Hybrid Reference Layer: Esri Community Maps Contributors, © OpenStreetMap, Microsoft, Esri, TomTom, Garmin, SafeGraph, GeoTechnologies, Inc, METI/NASA, USGS, EPA, NPS, US Census Bureau, USDA, USFWS

World Terrain Reference: Sources: Esri, Garmin, USGS, NPS

Bing Maps Aerial: © 2025 Microsoft Corporation © 2025 Maxar ©CNES (2025) Distribution Airbus DS

Project Location

SEC 17-T1S-R65W

ADAMS COUNTY, COLORADO

Drawn by CCL on 2025-02-05

Reviewed by TF 2025-02-05

203723362

Client/Project

EXTRACTION OIL & GAS INC - 10459

Amoco 44-17

Figure No.

1

Title

SOIL SAMPLE LOCATION MAP

Tables



Table 1
Soil Sample Locations
Extraction Oil & Gas, Inc.
SITE NAME: Amoco 44-17
Remediation Project # 38361

Sample Name	Date	Depth (feet)	PID (ppm)	Latitude	Longitude	Accuracy Value	Lab (Y/N)
WH-B01 @ 6'	2/4/2025	6	5.8	39.960611	-104.683217	18" - 3.2'	Y
WH-FL01 @ 3'	2/4/2025	3	0.6	39.960585	-104.683223	18" - 3.2'	Y
SEP-FL01 @ 3'	2/4/2025	3	247.2	39.960445	-104.683422	18" - 3.2'	Y
SEP-B01 @ 6'	2/4/2025	6	556.7	39.960466	-104.683409	18" - 3.2'	Y
PWV-B01 @ 6'	2/4/2025	6	626.5	39.960443	-104.68324	18" - 3.2'	Y
PWV-N @ 3'	2/4/2025	3	71.5	39.960444	-104.683233	18" - 3.2'	Y
PWV-S @ 3'	2/4/2025	3	1.8	39.960432	-104.683244	18" - 3.2'	Y
PWV-E @ 3'	2/4/2025	3	23.8	39.96043	-104.683208	18" - 3.2'	Y
PWV-W @ 3'	2/4/2025	3	48.3	39.960449	-104.683252	18" - 3.2'	Y
AST-B01 @ 0'	2/4/2025	0	1.2	39.960427	-104.683028	18" - 3.2'	Y
BG01 @ 3'	2/4/2025	3	29.5	39.960591	-104.683337	18" - 3.2'	Y
BG01 @ 6'	2/4/2025	6	3.1	39.960591	-104.683337	18" - 3.2'	Y
BG02 @ 3'	2/4/2025	3	11.8	39.960701	-104.683277	18" - 3.2'	Y
BG02 @ 6'	2/4/2025	6	1.5	39.960701	-104.683277	18" - 3.2'	Y
BG03 @ 3'	2/4/2025	3	6.8	39.960736	-104.683115	18" - 3.2'	Y
BG03 @ 6'	2/4/2025	6	1.5	39.960736	-104.683115	18" - 3.2'	Y
BG04 @ 3'	2/4/2025	3	2.2	39.960676	-104.682995	18" - 3.2'	Y
BG04 @ 6'	2/4/2025	6	1.2	39.960676	-104.682995	18" - 3.2'	Y
BG05 @ 3'	2/4/2025	3	2.3	39.960611	-104.683108	18" - 3.2'	Y
BG05 @ 6'	2/4/2025	6	1.2	39.960611	-104.683108	18" - 3.2'	Y

Notes

PID photoionization detector
ppm parts per million
-- not measured / not applicable

Metals in Soils (mg/kg)												
arsenic	0.68	0.29	Pending	Pending	Pending	Pending	Pending	Pending	Pending	Pending	Pending	Pending
barium	15000	82	Pending	Pending	Pending	Pending	Pending	Pending	Pending	Pending	Pending	Pending
cadmium	71	0.38	Pending	Pending	Pending	Pending	Pending	Pending	Pending	Pending	Pending	Pending
chromium (VI)	0.3	0.00067	Pending	Pending	Pending	Pending	Pending	Pending	Pending	Pending	Pending	Pending
copper	3100	46	Pending	Pending	Pending	Pending	Pending	Pending	Pending	Pending	Pending	Pending
lead	400	14	Pending	Pending	Pending	Pending	Pending	Pending	Pending	Pending	Pending	Pending
nickel	1500	26	Pending	Pending	Pending	Pending	Pending	Pending	Pending	Pending	Pending	Pending
selenium	390	0.26	Pending	Pending	Pending	Pending	Pending	Pending	Pending	Pending	Pending	Pending
silver	390	0.8	Pending	Pending	Pending	Pending	Pending	Pending	Pending	Pending	Pending	Pending
zinc	23000	370	Pending	Pending	Pending	Pending	Pending	Pending	Pending	Pending	Pending	Pending

Notes	
ECMC	Colorado Energy and Carbon Management Commission
RSSL	Residential Soil Screening Level
GWSSL	Protection of Groundwater Soil Screening Level
NA	not measured / not applicable
ppm	parts per million
TPH	total petroleum hydrocarbons
mg/kg	milligrams per kilogram
GRO	gasoleine range organics
DRO	diesel range organics
ORO	oil range organics
EC	electrical conductivity
mmhos/cm	millimhos per centimeter
SAR	sodium adsorption ratio
mg/L	milligrams per liter
<	less than laboratory reporting limit
bold	result exceeds the applicable standard
bold	result exceeds the applicable standard

Table 3
Background Soil Sample Analytical Results
Extraction Oil & Gas, Inc.
SITE NAME: Amoco 44-17
Remediation Project # 38361

Constituent of Concern	ECMC Table 915-1 RSSL's	ECMC Table 915-1 GWSSL's	Results										
Sample Name	--		BG01 @ 3'	BG01 @ 6'	BG02 @ 3'	BG02 @ 6'	BG03 @ 3'	BG03 @ 6'	BG04 @ 3'	BG04 @ 6'	BG05 @ 3'	BG05 @ 6'	
Date	--		2/4/2025	2/4/2025	2/4/2025	2/4/2025	2/4/2025	2/4/2025	2/4/2025	2/4/2025	2/4/2025	2/4/2025	
PID (ppm)	--		29.5	3.1	11.8	1.5	6.8	1.5	2.2	1.2	2.3	1.2	
Depth (feet)	--		3	6	3	6	3	6	3	6	3	6	
Soil Suitability for Reclamation													
EC (mmhos/cm)	4		Pending	Pending	Pending	Pending	Pending	Pending	Pending	Pending	Pending	Pending	
SAR (ratio)	6		Pending	Pending	Pending	Pending	Pending	Pending	Pending	Pending	Pending	Pending	
pH (units)	6-8.3		Pending	Pending	Pending	Pending	Pending	Pending	Pending	Pending	Pending	Pending	
boron (mg/L)	2		Pending	Pending	Pending	Pending	Pending	Pending	Pending	Pending	Pending	Pending	
Metals in Soils (mg/kg)													
arsenic	0.68	0.29	Pending	Pending	Pending	Pending	Pending	Pending	Pending	Pending	Pending	Pending	
barium	15000	82	Pending	Pending	Pending	Pending	Pending	Pending	Pending	Pending	Pending	Pending	
cadmium	71	0.38	Pending	Pending	Pending	Pending	Pending	Pending	Pending	Pending	Pending	Pending	
chromium (VI)	0.3	0.00067	Pending	Pending	Pending	Pending	Pending	Pending	Pending	Pending	Pending	Pending	
copper	3100	46	Pending	Pending	Pending	Pending	Pending	Pending	Pending	Pending	Pending	Pending	
lead	400	14	Pending	Pending	Pending	Pending	Pending	Pending	Pending	Pending	Pending	Pending	
nickel	1500	26	Pending	Pending	Pending	Pending	Pending	Pending	Pending	Pending	Pending	Pending	
selenium	390	0.26	Pending	Pending	Pending	Pending	Pending	Pending	Pending	Pending	Pending	Pending	
silver	390	0.8	Pending	Pending	Pending	Pending	Pending	Pending	Pending	Pending	Pending	Pending	
zinc	23000	370	Pending	Pending	Pending	Pending	Pending	Pending	Pending	Pending	Pending	Pending	

Notes

ECMC	Colorado Energy and Carbon Management Commission
RSSL	Residential Soil Screening Level
GWSSL	Protection of Groundwater Soil Screening Level
--	not measured / not applicable
ppm	parts per million
mg/kg	milligrams per kilogram
EC	electrical conductivity
mmhos/cm	millimhos per centimeter
SAR	sodium adsorption ratio
mg/L	milligrams per liter
<	less than laboratory reporting limit
bold	result exceeds the applicable standard
bold	result exceeds the applicable standard