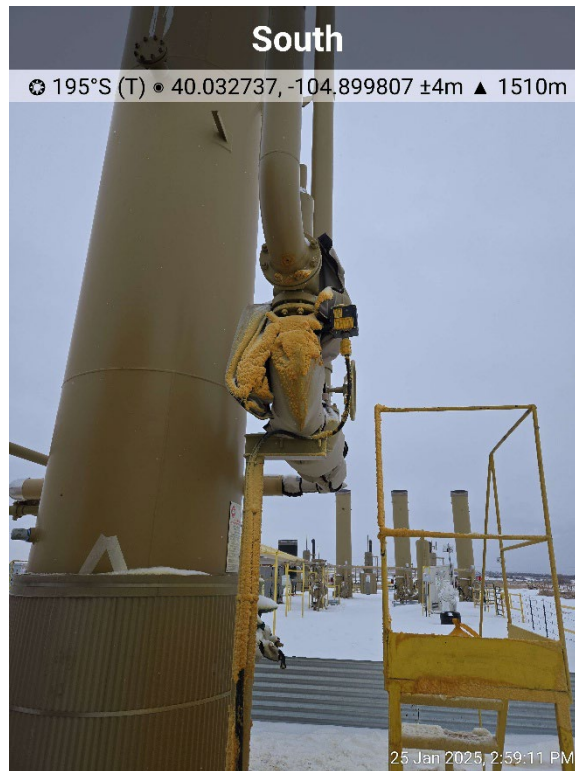


PHOTO LOG
HOWARD 30N,4C,29N-21HZ O FAC BT1
WELD COUNTY, COLORADO
KERR-MCGEE OIL & GAS ONSHORE, LP



Frozen Pressure Release Valve

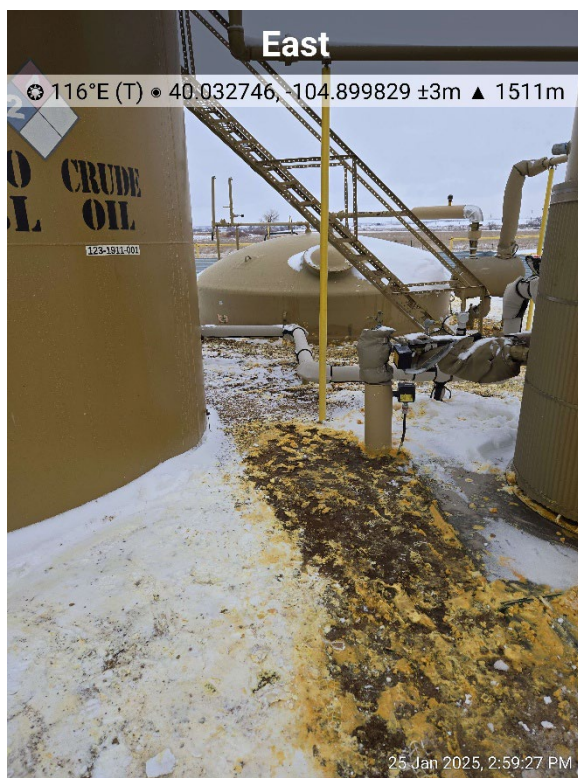


Release Location

PHOTO LOG
HOWARD 30N,4C,29N-21HZ O FAC BT1
WELD COUNTY, COLORADO
KERR-MCGEE OIL & GAS ONSHORE, LP



Release Location

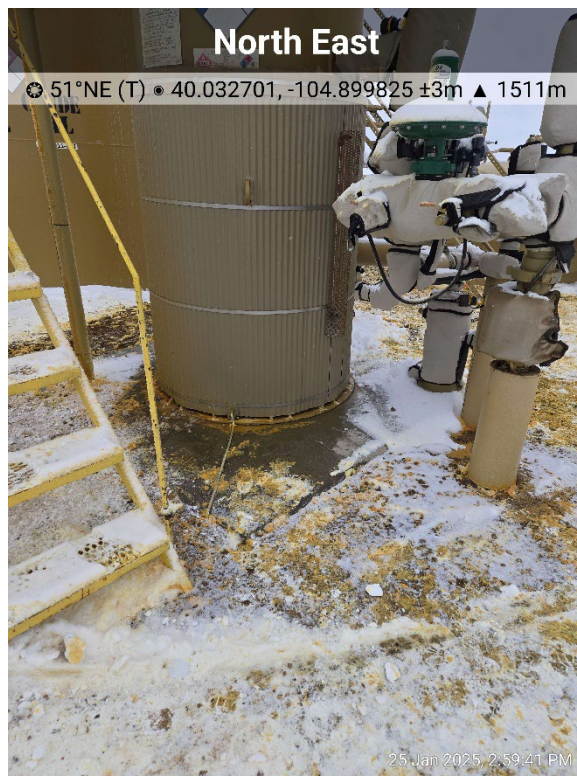


Release Location

PHOTO LOG
HOWARD 30N,4C,29N-21HZ O FAC BT1
WELD COUNTY, COLORADO
KERR-MCGEE OIL & GAS ONSHORE, LP



Release Location



Release Location

PHOTO LOG
HOWARD 30N,4C,29N-21HZ O FAC BT1
WELD COUNTY, COLORADO
KERR-MCGEE OIL & GAS ONSHORE, LP



Release Location



Release Location

PHOTO LOG
HOWARD 30N,4C,29N-21HZ O FAC BT1
WELD COUNTY, COLORADO
KERR-MCGEE OIL & GAS ONSHORE, LP

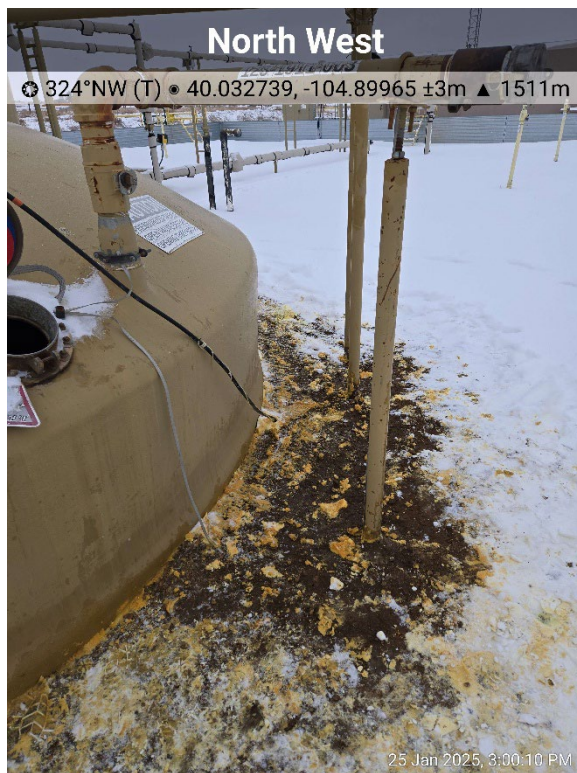


Release Location



Release Location

PHOTO LOG
HOWARD 30N,4C,29N-21HZ O FAC BT1
WELD COUNTY, COLORADO
KERR-MCGEE OIL & GAS ONSHORE, LP



Release Location



Release Location

PHOTO LOG
HOWARD 30N,4C,29N-21HZ O FAC BT1
WELD COUNTY, COLORADO
KERR-MCGEE OIL & GAS ONSHORE, LP



Release Location



Release Location

PHOTO LOG
HOWARD 30N,4C,29N-21HZ O FAC BT1
WELD COUNTY, COLORADO
KERR-MCGEE OIL & GAS ONSHORE, LP

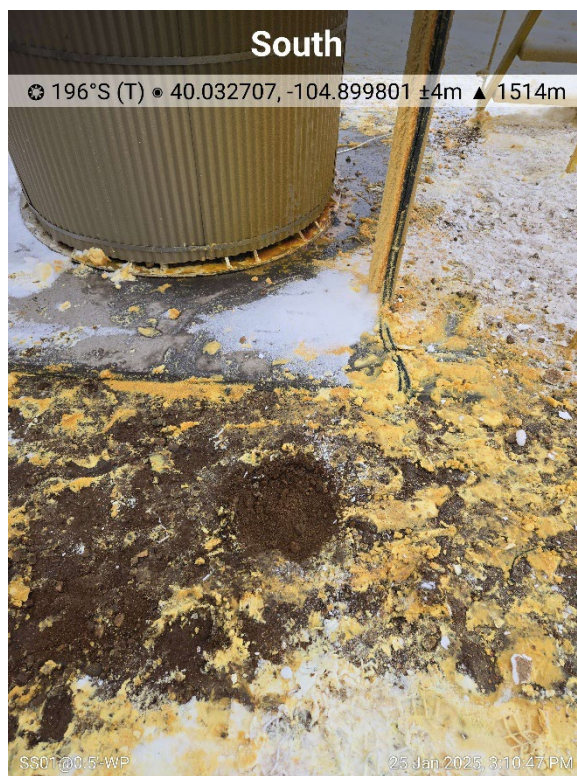


Release Location



Release Location

PHOTO LOG
HOWARD 30N,4C,29N-21HZ O FAC BT1
WELD COUNTY, COLORADO
KERR-MCGEE OIL & GAS ONSHORE, LP



Release Location