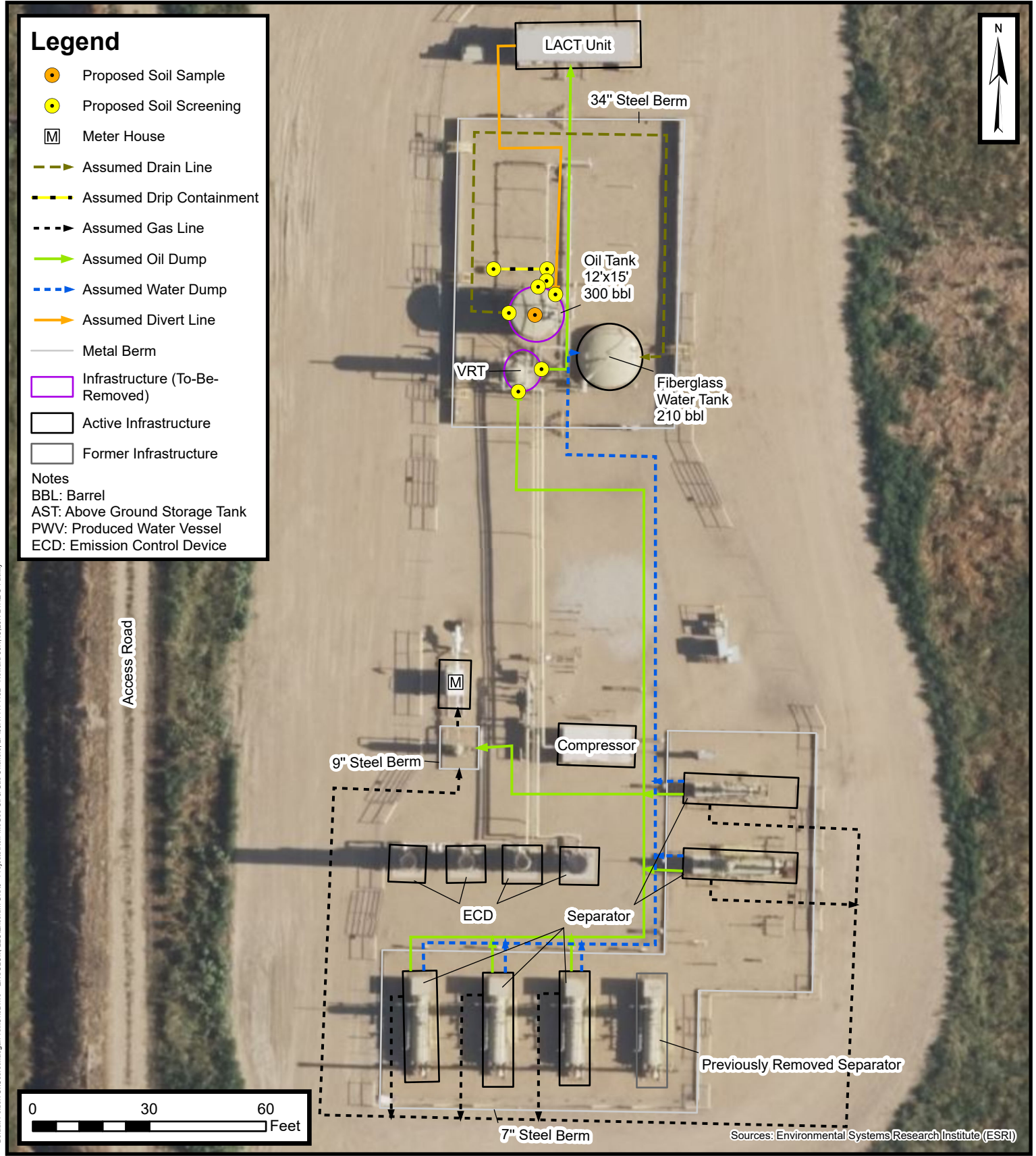
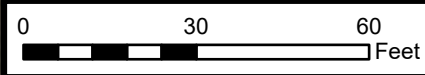


Legend

- Proposed Soil Sample
 - Proposed Soil Screening
 - M Meter House
 - Assumed Drain Line
 - Assumed Drip Containment
 - Assumed Gas Line
 - Assumed Oil Dump
 - Assumed Water Dump
 - Assumed Divert Line
 - Metal Berm
 - Infrastructure (To-Be-Removed)
 - Active Infrastructure
 - Former Infrastructure
- Notes
 BBL: Barrel
 AST: Above Ground Storage Tank
 PWV: Produced Water Vessel
 ECD: Emission Control Device



Default Folder: C:\Users\Margan\OneDrive - ENSOLUM, LLC\Ensolium\GIS\0 - Projects\Kerr-McGee Oil & Gas Onshore, LP\09A14171102 - Howard 30N,4C,29N-21HZ O Facility



Sources: Environmental Systems Research Institute (ESRI)

**Proposed Facility Closure and
 Soil Sampling Locations Map**
 Howard 30N,4C,29N-21HZ O Facility
 Kerr-McGee Oil & Gas Onshore, LP
 SESW SEC 21-T1N-R67W
 Weld County, CO

Project Number: 09A14171102



**FIGURE
 2**