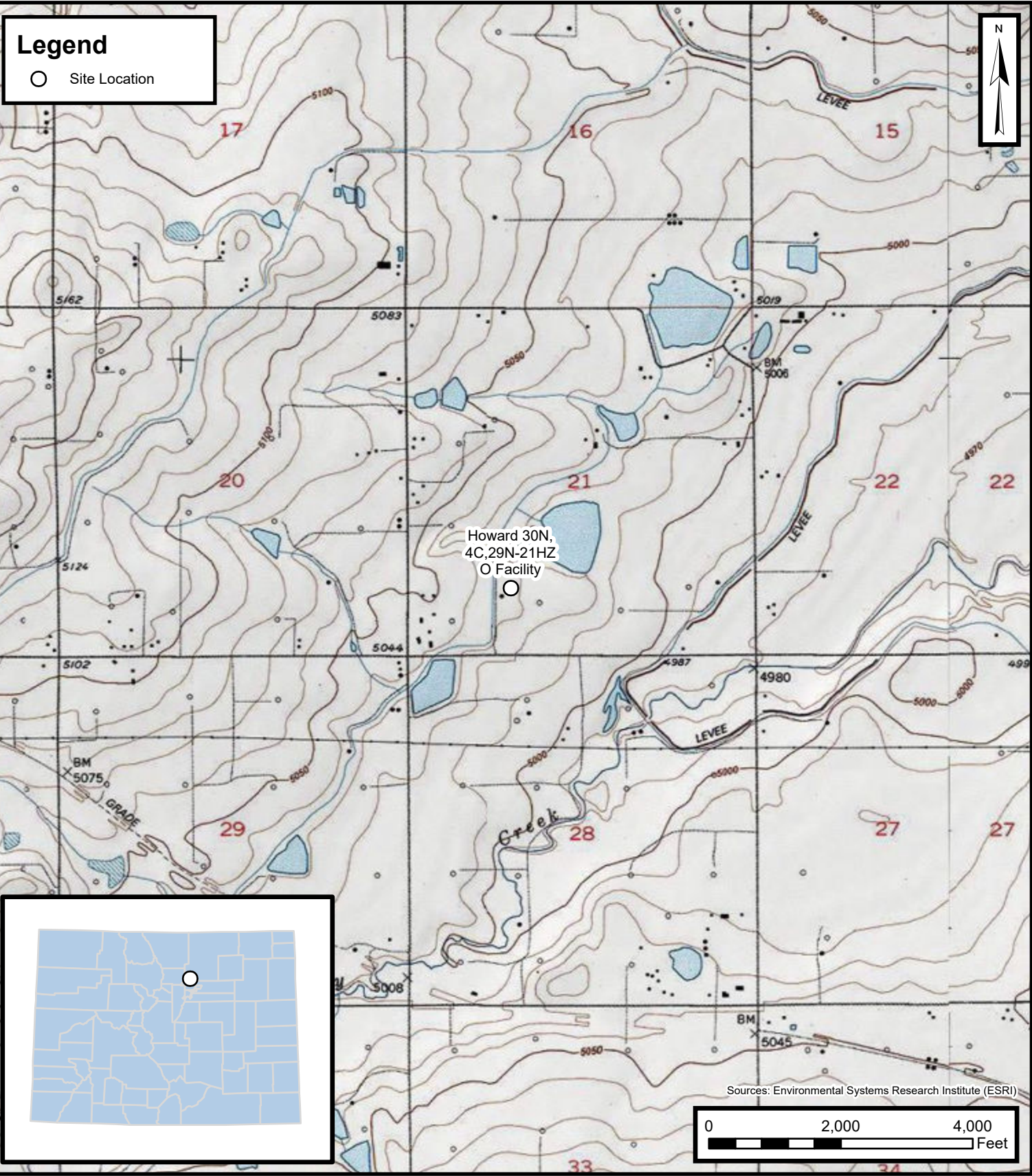


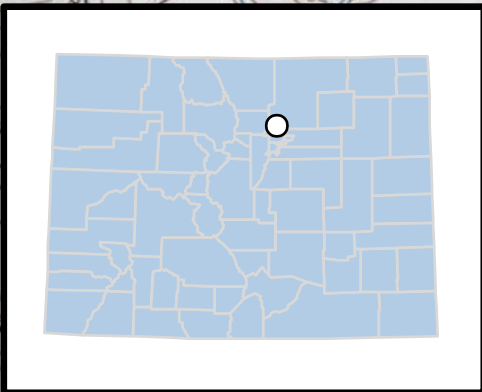
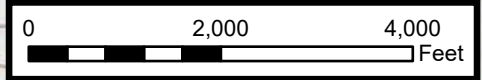
Legend

○ Site Location



Howard 30N,
4C, 29N-21HZ
O Facility

Sources: Environmental Systems Research Institute (ESRI)



Default Folder: C:\Users\Margan.Tal\OneDrive - ENSOLUM LLC\Ensolum GIS\0 - Projects\Kerr-McGee Oil & Gas Onshore, LP\09A14171102 - Howard 30N, 4C, 29N-21HZ O Facility



Site Location Map

Howard 30N, 4C, 29N-21HZ O Facility
Kerr-McGee Oil & Gas Onshore, LP
SESW SEC 21-T1N-R67W
Weld County, CO

Project Number: 09A14171102

FIGURE

1