

Loc. # 320751

FIELD NAME PRONGHORN - #70650

Spud Date 5/11/1984

Basin DENVER - JULESBURG

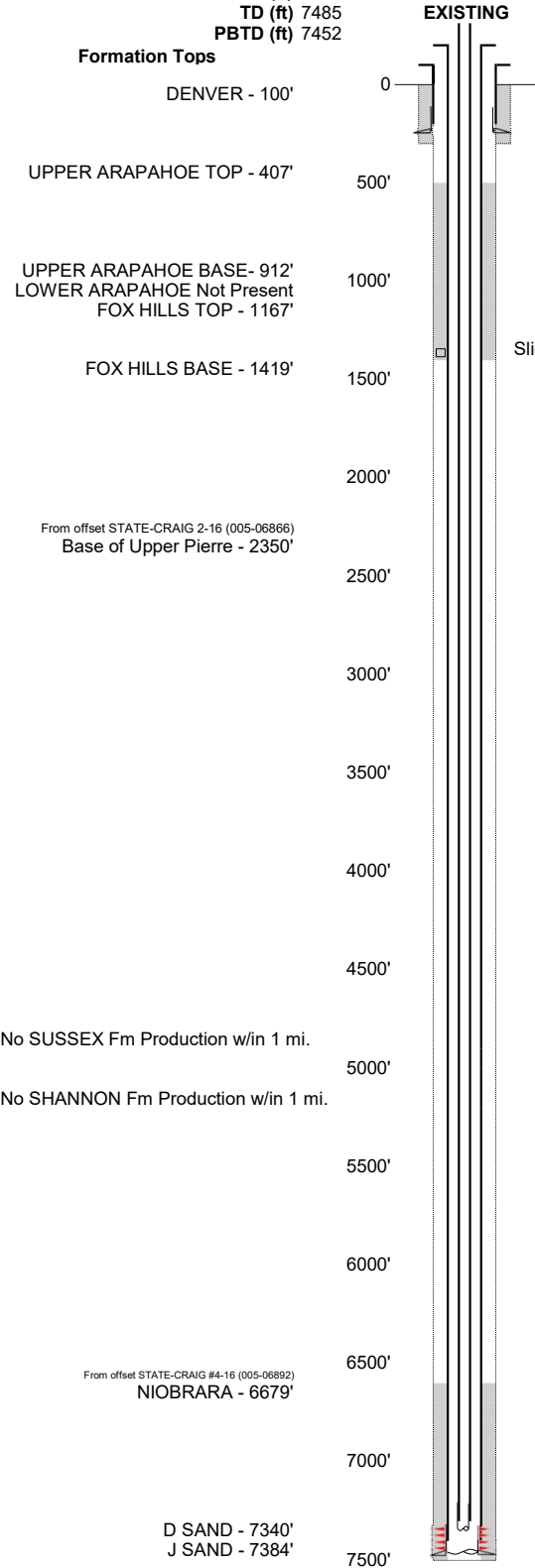
Location SWSE 16 5S 62W 6

Elevation GL (ft) 5646

Elevation KB (ft) 5656

TD (ft) 7485

PBTD (ft) 7452



Existing Casing and Cement Coverage

SURF: Size: 8.625", Hole Size: 12.25 in.
Depth: 252 ft., Weight: 24
Cement: 240 sx, Top: 0 ft., Method: Vis

UPPER ARAPAHOE TOP - 407'

Deepest DWR w/in 1 mi. = 540'

UPPER ARAPAHOE BASE - 912'

FOX HILLS TOP - 1167'

FOX HILLS BASE - 1419'

Sliding sleeve @ 1385' w/ 200 sx, TOC CALC @ 509'

1ST, Size: 4.5", Hole Size: 7.875"
Depth: 7482', Weight: 11.6
Cement: 200 sx, TOC: 6600', Method: CALC

Base of Upper Pierre - 2350'

NIOBRARA - 6679'

tubing UNK
TOC = 6600' (CALC)
D Sand Perfs 7384' - 7390'
J Sand Perfs 7404' - 7453'
PBTD (ft) 7452'
TD (ft) 7485'

