



<b>CLIENT:</b> Noble		<b>SITE NAME:</b> Anderson Marley Tank Battery					<b>DATE:</b> 12/13/2024	<b>REM. PROJECT #:</b> 32691	<b>WEATHER:</b> Sunny, 20s	
<b>SITE DIRECTIONS:</b> CR 38 X CR 41.5, E. 500', N. Into site							<b>JOB#:</b> 8597			
<b>LEGALS AND LAT/LONG:</b> 40.26388, -104.66557							<b>TASMAN PERSONNEL:</b> M. Wentzel			
<b>SOIL TYPES:</b> Well Graded Sand - SW							<b>SURFACE GRADIENT:</b> North			
SOIL SAMPLING							FACILITY INFRASTRUCTURE			
Date/Time	Soil Sample ID	PID (ppm)	Visual	Olfactory	Photo?	Grab or Lab Sample?	EQUIPMENT	Quantity		
							Above Ground Storage Tank (AST)	3	✓	
12-13-2024 10:40	AST01@0-6"	0.2	No Staining	No Odor	Yes	Lab	Buried or Partially Buried Vessel	1	✓	
12-13-2024 10:42	AST02@0-6"	0.1	No Staining	No Odor	Yes	Lab	Separator	3	✓	
12-13-2024 10:44	AST03@0-6"	0.8	No Staining	No Odor	Yes	Lab	Emission Control Device (ECD)	2	✓	
12-13-2024 09:49	FLARE01@0-6"	0.0	No Staining	No Odor	Yes	Grab	Dump Line	3	✓	
12-13-2024 09:53	FLARE02@0-6"	0.1	No Staining	No Odor	Yes	Grab	Wellhead			
12-13-2024 09:34	MH01@0-6"	0.0	No Staining	No Odor	Yes	Grab	Flowline			
12-13-2024 10:03	SEP01-DL@2'	0.4	No Staining	No Odor	Yes	Lab	Other: Meter House	1	✓	
12-13-2024 10:07	SEP01-FL@2'	2.0	No Staining	No Odor	Yes	Lab	Soil Loads Removed			
12-13-2024 10:12	SEP02-DL@2'	0.6	No Staining	No Odor	Yes	Lab	IMPACTED SOIL IDENTIFIED?			
12-13-2024 10:16	SEP02-FL@2'	13.5	No Staining	No Odor	Yes	Lab	ESTIMATED VOLUME OF IMPACTS:			
12-13-2024 10:49	PWV01-B@0-6"	10.3	No Staining	No Odor	Yes	Lab	Date	Number	CY	
12-13-2024 11:48	SEP03-DL@2'	1.0	No Staining	No Odor	Yes	Lab				
12-13-2024 11:51	SEP03-FL@2'	153.2	No Staining	Slight HC Odor	Yes	Lab				
12-13-2024 12:00	BKG01@0-6"	0.2	No Staining	No Odor	Yes	Lab				
12-13-2024 12:04	BKG01@2'	0.1	No Staining	No Odor	Yes	Lab				
							Total Removed	0	0	
							Disposal Facility:			
							Groundwater Recovery			
							DATE GW ENCOUNTERED:	DEPTH:		
							GROUNDWATER IN CONTACT WITH IMPACTED SOIL?			
							LNAPL OR SHEEN OBSERVED ON GW?			
GROUNDWATER SAMPLING							Date	BBLs		
Date/Time	Groundwater Sample ID	Depth Collected	Turbid?	Sheen?	Odor?	Photo?				
							Total Removed	0		
							Disposal Facility:			

# Chevron Rockies Business Unit

## Field Qualitative Criteria for ECMC Reporting Associated with the Discovery of Potentially Impacted Material

If answered **Yes** to any of the questions listed below, this may suggest the presence of potentially impacted materials as outlined in ECMC Rule 912. Out of an abundance of caution, a “Yes” response will be reported to the ECMC within 24 hours after discovery, regardless of laboratory results. **Immediately notify the RBU Remediation Team.** Include a copy of this Field Qualitative Spill Criteria Checklist in the field Report.

Please answer the following questions when on-site:

1. Is there visible petroleum hydrocarbon staining in the soil? No
2. Does the soil sample from the stained area have a petroleum odor? Yes
3. Is there a petroleum hydrocarbon sheen on the nearby surface water? No
4. Does there appear to be a sheen of the surface of accumulated groundwater or seeps within the excavation indicative of petroleum? No
5. Is stained soil in contact with groundwater? No

Please Include relevant photos of the site conditions for items 1-5.

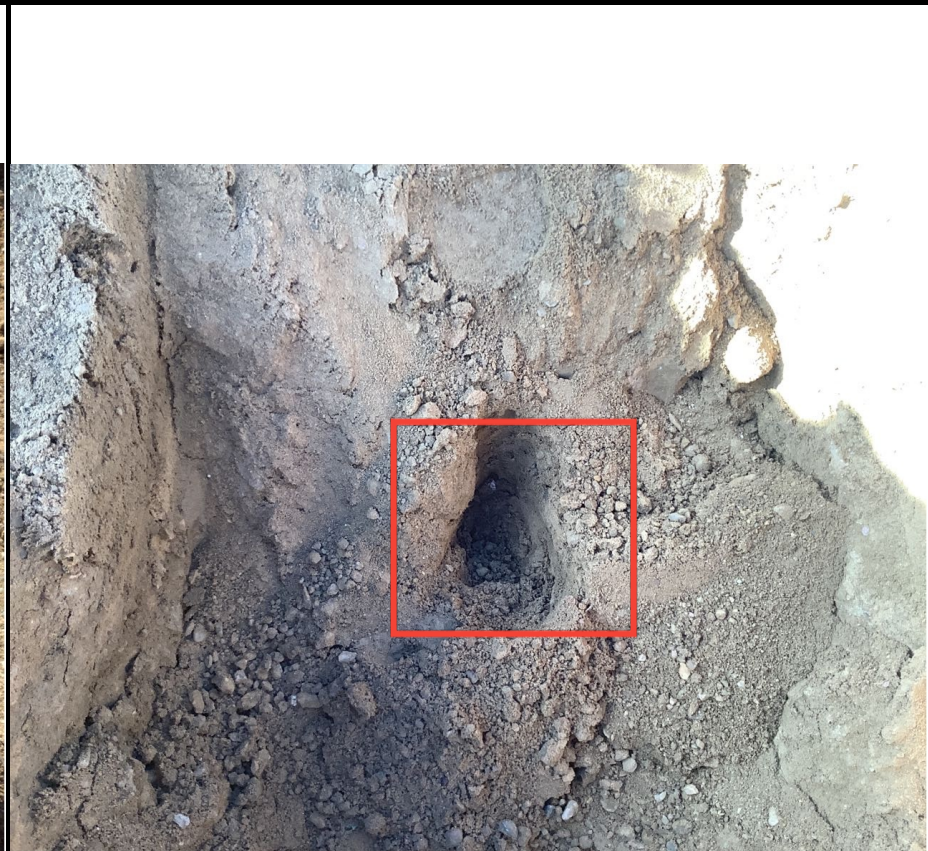
Location name: Anderson Marley Tank Battery

Please Circle Facility Type: Production Facility





<b>Equipment ID:</b> MH01@0-6"		<b>Equipment Type:</b>		<b>Equipment ID:</b> FLARE01@0-6"		<b>Equipment Type:</b>	
<b>Material:</b>	<b>Volume:</b>	<b>Contents:</b>		<b>Material:</b>	<b>Volume:</b>	<b>Contents:</b>	
<b>Notes/Conditions:</b> FACING E.				<b>Notes/Conditions:</b> FACING S.			



<b>Equipment ID:</b> FLARE02@0-6"		<b>Equipment Type:</b>	
<b>Material:</b>	<b>Volume:</b>	<b>Contents:</b>	
<b>Notes/Conditions:</b> FACING S.			

<b>Equipment ID:</b> SEP01-DL@2'		<b>Equipment Type:</b>	
<b>Material:</b>	<b>Volume:</b>	<b>Contents:</b>	
<b>Notes/Conditions:</b> FACING W.			



<b>Equipment ID:</b> SEP02-DL@2'		<b>Equipment Type:</b>		<b>Equipment ID:</b> SEP02-FL@2'		<b>Equipment Type:</b>	
<b>Material:</b>	<b>Volume:</b>	<b>Contents:</b>		<b>Material:</b>	<b>Volume:</b>	<b>Contents:</b>	
<b>Notes/Conditions:</b> FACING W.				<b>Notes/Conditions:</b> FACING N.			

					
<b>Equipment ID:</b> SEP01-FL@2'		<b>Equipment Type:</b>	<b>Equipment ID:</b> AST01@0-6"		<b>Equipment Type:</b>
<b>Material:</b>	<b>Volume:</b>	<b>Contents:</b>	<b>Material:</b>	<b>Volume:</b>	<b>Contents:</b>
<b>Notes/Conditions:</b> FACING N.			<b>Notes/Conditions:</b> FACING N.		



<b>Equipment ID:</b> AST02@0-6"	<b>Equipment Type:</b>	
<b>Material:</b>	<b>Volume:</b>	<b>Contents:</b>

**Notes/Conditions:** FACING N.

<b>Equipment ID:</b> AST03@0-6"	<b>Equipment Type:</b>	
<b>Material:</b>	<b>Volume:</b>	<b>Contents:</b>

**Notes/Conditions:** FACING N.

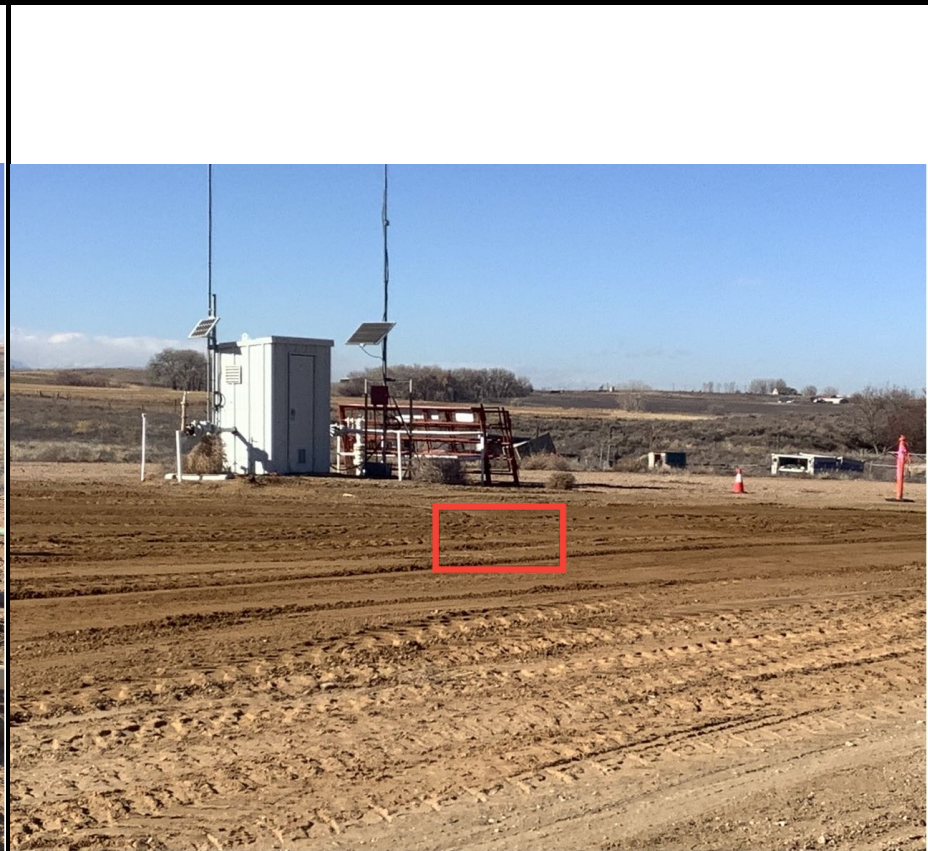


<b>Equipment ID:</b> PWV01-B@0-6"		<b>Equipment Type:</b>		<b>Equipment ID:</b> SEP03-DL@2'		<b>Equipment Type:</b>	
<b>Material:</b>	<b>Volume:</b>	<b>Contents:</b>		<b>Material:</b>	<b>Volume:</b>	<b>Contents:</b>	
<b>Notes/Conditions:</b> FACING N.				<b>Notes/Conditions:</b> FACING N.			



<b>Equipment ID:</b> SEP03-FL@2'		<b>Equipment Type:</b>	
<b>Material:</b>	<b>Volume:</b>	<b>Contents:</b>	
<b>Notes/Conditions:</b> FACING N.			

<b>Equipment ID:</b> BKG01@0-6", BKG01@2'		<b>Equipment Type:</b>	
<b>Material:</b>	<b>Volume:</b>	<b>Contents:</b>	
<b>Notes/Conditions:</b> FACING N.			



<b>Equipment ID:</b> DUMPLINES		<b>Equipment Type:</b>	
<b>Material:</b>	<b>Volume:</b>	<b>Contents:</b>	
<b>Notes/Conditions:</b>			

<b>Equipment ID:</b>		<b>Equipment Type:</b>	
<b>Material:</b>	<b>Volume:</b>	<b>Contents:</b>	
<b>Notes/Conditions:</b> •Area of SEP03-FL@2' (HIGH PID)			

**TABLE 1**  
**FIELD DATA SUMMARY TABLE**  
**NOBLE ENERGY, INC. - 100322**  
**ANDERSON MARLEY TANK BATTERY, WELD COUNTY, COLORADO**  
**REM # 32691**



Sample ID	Sample Date	Depth (ft. bgs)	GPS Data <sup>(1)</sup>		PDOP Value	VOC Concentration <sup>(2)</sup> (ppm)
			Latitude/Longitude			
AST01@0-6"	12/13/2024	0-0.5	40.264526	-104.665858	0.9	0.2
AST02@0-6"	12/13/2024	0-0.5	40.264494	-104.665836	0.9	0.1
AST03@0-6"	12/13/2024	0-0.5	40.264450	-104.665810	0.9	0.8
FLARE01@0-6"	12/13/2024	0-0.5	40.264897	-104.666156	0.9	0.0
FLARE02@0-6"	12/13/2024	0-0.5	40.264916	-104.666106	0.9	0.1
MH01@0-6"	12/13/2024	0-0.5	40.264884	-104.666230	0.9	0.0
PWV01-B@0-6"	12/13/2024	0-0.5	40.264575	-104.665925	1.0	10.3
SEP01-DL@2'	12/13/2024	2	40.264817	-104.666152	0.8	0.4
SEP01-FL@2'	12/13/2024	2	40.264831	-104.666071	0.8	2.0
SEP02-DL@2'	12/13/2024	2	40.264785	-104.666098	0.9	0.6
SEP02-FL@2'	12/13/2024	2	40.264817	-104.666044	0.9	13.5
SEP03-DL@2'	12/13/2024	2	40.264883	-104.666083	0.9	1.0
SEP03-FL@2'	12/13/2024	2	40.264838	-104.666043	0.9	153
BKG01@0-6"	12/13/2024	0-0.5	40.263822	-104.665262	0.8	0.2
BKG01@2'	12/13/2024	2	40.263822	-104.665262	0.8	0.1

**Notes:**

1. Global Positioning System (GPS) data is provided in decimal degrees using North American Datum (NAD) 83 UTM Zone 13 North.

2. Volatile organic compound (VOC) concentrations are measured in the field using a photoionization detector (PID).

PDOP = Position Dilution of Precision

ppm = Parts per million

ft. = Feet

bgs = Below ground surface

TABLE 2  
SUMMARY OF VOLATILE ORGANIC SOIL CHEMISTRY DATA  
NOBLE ENERGY, INC. - 100322  
ANDERSON MARLEY TANK BATTERY, WELD COUNTY, COLORADO  
REM # 32691



Sample ID	Sample Date	Depth (ft. bgs)	Benzene (mg/kg)	Toluene (mg/kg)	Ethyl-Benzene (mg/kg)	Xylenes (mg/kg)	1,2,4-Trimethyl-Benzene (mg/kg)	1,3,5-Trimethyl-Benzene (mg/kg)	Naphthalene (mg/kg)	TPH (mg/kg)	TPH GRO (mg/kg)	TPH DRO (mg/kg)	TPH ORO (mg/kg)
ECMC Table 915-1 Limits (Residential SSL)			1.2	490	5.8	58	30	27	2	500	500**		
ECMC Table 915-1 Limits (Protection of Groundwater SSL)			0.0026	0.69	0.78	9.9	0.0081	0.0087	0.0038	500	500**		
AST01@0-6"	12/13/2024	0-0.5	<0.0020	<0.0050	<0.0050	<0.010	<0.0050	<0.0050	<0.0038	<50	<0.50	<50	<50
AST02@0-6"	12/13/2024	0-0.5	<0.0020	<0.0050	<0.0050	<0.010	<0.0050	<0.0050	<0.0038	<50	<0.50	<50	<50
AST03@0-6"	12/13/2024	0-0.5	<0.0020	<0.0050	<0.0050	<0.010	<0.0050	<0.0050	<0.0038	<50	<0.50	<50	<50
PWV01-B@0-6"	12/13/2024	0-0.5	<0.0020	<0.0050	<0.0050	<0.010	<0.0050	<0.0050	<0.0038	66	<0.50	66	<50
SEP01-DL@2'	12/13/2024	2	<0.0020	<0.0050	<0.0050	<0.010	<0.0050	<0.0050	<0.0038	<50	<0.50	<50	<50
SEP01-FL@2'	12/13/2024	2	<0.0020	<0.0050	<0.0050	<0.010	<0.0050	<0.0050	<0.0038	<50	<0.50	<50	<50
SEP02-DL@2'	12/13/2024	2	<0.0020	<0.0050	<0.0050	<0.010	<0.0050	<0.0050	<0.0038	<50	<0.50	<50	<50
SEP02-FL@2'	12/13/2024	2	<0.0020	<0.0050	<0.0050	<0.010	<0.0050	<0.0050	<0.0038	<50	<0.50	<50	<50
SEP03-DL@2'	12/13/2024	2	<0.0020	<0.0050	<0.0050	<0.010	<0.0050	<0.0050	<0.0038	<50	<0.50	<50	<50
SEP03-FL@2'	12/13/2024	2	<0.0020	0.15	0.079	0.46	<b>0.71</b>	<b>0.42</b>	<b>0.29</b>	99	28	71	<50

**Notes:**

ECMC = Energy & Carbon Management Commission

(<) = Analytical result is less than the indicated laboratory reporting limit.

TPH-GRO = Total petroleum hydrocarbons - gasoline range organics

TPH-DRO = Total petroleum hydrocarbons - diesel range organics

TPH-ORO = Total petroleum hydrocarbons - oil range organics

mg/kg = Milligrams per kilogram

ft. = Feet

bgs = Below ground surface

**Bold** values exceed the ECMC Table 915-1 limit(s).

Pink & blue highlighted soil analytical values indicate an exceedance of the referenced soil screening level (SSL).

\*\* Summation of GRO+DRO+ORO must be less than 500 mg/kg.

TABLE 3  
SUMMARY OF POLYCYCLIC AROMATIC HYDROCARBON SOIL CHEMISTRY DATA  
NOBLE ENERGY, INC. - 100322  
ANDERSON MARLEY TANK BATTERY, WELD COUNTY, COLORADO  
REM # 32691



Sample ID	Sample Date	Depth (ft. bgs)	Acenaphthene (mg/kg)	Anthracene (mg/kg)	Benzo (a) Anthracene (mg/kg)	Benzo (a) Pyrene (mg/kg)	Benzo (b) Fluoranthene (mg/kg)	Benzo (k) Fluoranthene (mg/kg)	Chrysene (mg/kg)	Dibenzo (a,h) Anthracene (mg/kg)	Fluoranthene (mg/kg)	Fluorene (mg/kg)	Indeno (1,2,3-cd) Pyrene (mg/kg)	Pyrene (mg/kg)	1-Methyl - Naphthalene (mg/kg)	2-Methyl- Naphthalene (mg/kg)
ECMC Table 915-1 Limits (Residential SSL)			360	1,800	1.1	0.11	1.1	11	110	0.11	240	240	1.1	180	18	24
ECMC Table 915-1 Limits (Protection of Groundwater SSL)			0.55	5.8	0.011	0.24	0.3	2.9	9	0.096	8.9	0.54	0.98	1.3	0.006	0.019
AST01@0-6"	12/13/2024	0-0.5	<0.00500	<0.00500	<0.00500	<0.00500	<0.00500	<0.00500	<0.00500	<0.00500	<0.00500	<0.00500	<0.00500	<0.00500	<0.00500	<0.00500
AST02@0-6"	12/13/2024	0-0.5	<0.00500	<0.00500	<0.00500	<0.00500	<0.00500	<0.00500	<0.00500	<0.00500	<0.00500	<0.00500	<0.00500	<0.00500	<0.00500	<0.00500
AST03@0-6"	12/13/2024	0-0.5	<0.00500	<0.00500	<0.00500	<0.00500	<0.00500	<0.00500	<0.00500	<0.00500	<0.00500	<0.00500	<0.00500	<0.00500	<0.00500	<0.00500
PWV01-B@0-6"	12/13/2024	0-0.5	<0.00500	<0.00500	<0.00500	<0.00500	<0.00500	<0.00500	<0.00500	<0.00500	<0.00500	<0.00500	<0.00500	<0.00500	<0.00500	<0.00500
SEP01-DL@2'	12/13/2024	2	<0.00500	<0.00500	<0.00500	<0.00500	<0.00500	<0.00500	<0.00500	<0.00500	<0.00500	<0.00500	<0.00500	<0.00500	<0.00500	<0.00500
SEP01-FL@2'	12/13/2024	2	<0.00500	<0.00500	<0.00500	<0.00500	<0.00500	<0.00500	<0.00500	<0.00500	<0.00500	<0.00500	<0.00500	<0.00500	<0.00500	<0.00500
SEP02-DL@2'	12/13/2024	2	<0.00500	<0.00500	<0.00500	<0.00500	<0.00500	<0.00500	<0.00500	<0.00500	<0.00500	<0.00500	<0.00500	<0.00500	<0.00500	<0.00500
SEP02-FL@2'	12/13/2024	2	<0.00500	<0.00500	<0.00500	<0.00500	<0.00500	<0.00500	<0.00500	<0.00500	<0.00500	<0.00500	<0.00500	<0.00500	<0.00500	<0.00500
SEP03-DL@2'	12/13/2024	2	<0.00500	<0.00500	<0.00500	<0.00500	<0.00500	<0.00500	<0.00500	<0.00500	<0.00500	<0.00500	<0.00500	<0.00500	<0.00500	<0.00500
SEP03-FL@2'	12/13/2024	2	<0.00500	<0.00500	<0.00500	<0.00500	<0.00500	<0.00500	<0.00500	<0.00500	<0.00500	<0.00500	<0.00500	<0.00500	<0.00500	<0.00500

**Notes:**

ECMC = Colorado Energy & Carbon Management Commission

(<) = Analytical result is less than the indicated laboratory reporting limit.

ft. = Feet

bgs = Below ground surface

mg/kg = Milligrams per kilogram

**Bold** values exceed the ECMC Table 915-1 limit(s).

Pink & blue highlighted soil analytical values indicate an exceedance of the referenced soil screening level (SSL).

**TABLE 4**  
**SUMMARY OF SOIL SUITABILITY FOR RECLAMATION**  
**NOBLE ENERGY, INC. - 100322**  
**ANDERSON MARLEY TANK BATTERY, WELD COUNTY, COLORADO**  
**REM # 32691**



Sample ID	Sample Date	Depth (ft. bgs)	pH (Standard Units)	EC (mmhos/cm)	SAR (Standard Units)	Boron (mg/L)
ECMC Table 915-1 Soil Suitability Limits			6 - 8.3	<4	<6	2
AST01@0-6"	12/13/2024	0-0.5	<b>8.42</b>	0.187	1.02	<2.00
AST02@0-6"	12/13/2024	0-0.5	<b>8.36</b>	0.0675	0.196	<2.00
AST03@0-6"	12/13/2024	0-0.5	<b>8.66</b>	0.0743	0.181	<2.00
PWV01-B@0-6"	12/13/2024	0-0.5	<b>8.54</b>	0.126	0.500	<2.00
SEP01-DL@2'	12/13/2024	2	7.99	0.0813	0.0580	<2.00
SEP01-FL@2'	12/13/2024	2	<b>8.90</b>	0.0788	0.0641	<2.00
SEP02-DL@2'	12/13/2024	2	<b>8.99</b>	0.0833	0.0607	<2.00
SEP02-FL@2'	12/13/2024	2	8.30	0.136	0.194	<2.00
SEP03-DL@2'	12/13/2024	2	<b>8.97</b>	0.0664	0.0219	<2.00
SEP03-FL@2'	12/13/2024	2	7.83	0.620	0.289	<2.00
BKG01@0-6"	12/13/2024	0-0.5	8.43	0.0957	0.0110	<2.00
BKG01@2'	12/13/2024	2	7.36	0.0763	0.0123	<2.00
Maximum Background Concentration			8.43	-	-	-

**Notes:**

ECMC = Colorado Energy & Carbon Management Commission

EC = Electrical conductivity

SAR = Sodium adsorption ratio

mmhos/cm = millimhos per centimeter

mg/L = milligram per liter

(<) = Analytical result is less than the indicated laboratory reporting limit.

ft. = Feet

bgs = Below ground surface

**Bold** faced values exceed the ECMC Table 915-1 limit(s), but are within background concentrations.

**Bold** faced values exceed the ECMC Table 915-1 limit(s) and native background concentrations.

Brown highlighted soil analytical values indicate a regulatory exceedance.

**TABLE 5**  
**SUMMARY OF METALS IN SOIL CHEMISTRY DATA**  
**NOBLE ENERGY, INC. - 100322**  
**ANDERSON MARLEY TANK BATTERY, WELD COUNTY, COLORADO**  
**REM # 32691**



Sample ID	Sample Date	Depth (ft. bgs)	Arsenic (mg/kg)	Barium (mg/kg)	Cadmium (mg/kg)	Chromium (VI) <sup>[1]</sup> (mg/kg)	Copper (mg/kg)	Lead (mg/kg)	Nickel (mg/kg)	Selenium (mg/kg)	Silver (mg/kg)	Zinc (mg/kg)
ECMC Table 915-1 Limits (Residential SSL)			0.68	15,000	71	0.3	3,100	400	1,500	390	390	23,000
ECMC Table 915-1 Limits (Protection of Groundwater SSL)			0.29	82	0.38	0.00067	46	14	26	0.26	0.8	370
AST01@0-6"	12/13/2024	0-0.5	<b>0.966</b>	26.3	<0.200	<0.30	3.16	3.04	2.86	<0.260	0.0293	16.7
AST02@0-6"	12/13/2024	0-0.5	<b>1.07</b>	26.1	<0.200	<0.30	3.94	2.91	3.35	<0.260	<0.0200	14.0
AST03@0-6"	12/13/2024	0-0.5	<b>1.03</b>	32.4	<0.200	<0.30	3.75	3.18	3.35	<0.260	<0.0200	13.3
PWV01-B@0-6"	12/13/2024	0-0.5	<b>1.20</b>	31.3	<0.200	<0.30	3.14	3.92	2.81	<0.260	<0.0200	24.8
SEP01-DL@2'	12/13/2024	2	<b>1.27</b>	31.1	<0.200	<0.30	3.11	3.03	2.57	<0.260	<0.0200	11.8
SEP01-FL@2'	12/13/2024	2	<b>1.29</b>	38.1	<0.200	<0.30	3.33	4.21	2.96	<0.260	<0.0200	11.6
SEP02-DL@2'	12/13/2024	2	<b>0.783</b>	24.3	<0.200	<0.30	1.94	2.10	1.72	<0.260	<0.0200	7.57
SEP02-FL@2'	12/13/2024	2	<b>1.24</b>	39.2	<0.200	<0.30	2.97	3.16	2.81	<0.260	<0.0200	11.5
SEP03-DL@2'	12/13/2024	2	<b>1.25</b>	38.8	<0.200	<0.30	2.67	3.58	2.61	<0.260	<0.0200	10.9
SEP03-FL@2'	12/13/2024	2	<b>1.25</b>	33.4	<0.200	<0.30	2.99	2.90	2.54	<0.260	<0.0200	10.0
BKG01@0-6"	12/13/2024	0-0.5	1.08	30.2	<0.200	<0.30	2.77	6.13	2.05	<0.260	<0.0200	11.4
BKG01@2'	12/13/2024	2	0.859	28.1	<0.200	<0.30	2.11	2.84	1.80	<0.260	<0.0200	7.85
Maximum Background Concentration X 1.25			1.35	-	-	-	-	-	-	-	-	-

**Notes:**

1. Compound falls within ECMC Table 915-1 Footnote 9.

ECMC = Energy & Carbon Management Commission

(<) = Analytical result is less than the indicated laboratory reporting limit.

mg/kg = Milligrams per kilogram

ft. = Feet

bgs = Below ground surface

**Bold** faced values exceed the ECMC Table 915-1 limit(s), but are within 1.25x background concentrations.

**Bold** faced values exceed the ECMC Table 915-1 limit(s) and native background concentrations.

Pink & blue highlighted soil analytical values indicate an exceedance of the referenced soil screening level (SSL).



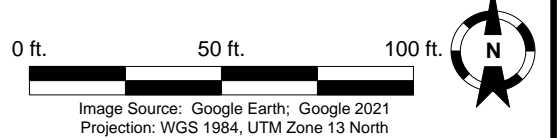
**Legend**

- Soil Sample Location – Field Screen (Collected via Trimble GPS)
- Soil Sample Location – Lab Analyzed (Collected via Trimble GPS)
- Soil Sample Location – GSSL Exceedance (Collected via Trimble GPS)

**Notes**

- 1) All locations are approximate unless otherwise noted.
- 2) Buried infrastructure has been spatially projected.
- 3) Color coded sample exceedances are in reference to ECMC Table 915-1 Organic Compounds in Soil.

GPS – Global Positioning System  
 PID – Photoionization Detector  
 ppm – Parts per million  
 GSSL – Protection of Groundwater Soil Screening Levels



DATE: January 29, 2025  
 DESIGNED BY: J. Whritenour  
 DRAWN BY: R. Yavinsky



**Noble Energy, Inc. – 100322 – DJ Basin**  
**Anderson Marley Tank Battery**  
 SWSE, Section 33, Township 4 North, Range 65 West  
 Weld County, Colorado

**SOIL SAMPLE LOCATION MAP**  
 (12/13/2024)

**FIGURE 1**