



**SECTOR CEMENT BOND
GAMMA RAY
CCL LOG**

Company OCCIDENTAL PETROLEUM
Well PALOMBO 23-4L
Field PALOMBO 23-4L
County WELD State **COLORADO**

Location: API # : 05-123-16686 Other Services
 1986' FSL & 647' FWL
 NW/NW
 SEC 23 TWP 3N RGE 67W
 Permanent Datum G.L. Elevation 4804'
 Log Measured From G.L. 0 Above Perm. Datum
 Drilling Measured From K.B. Elevation
 G.L. 4804'

Date of Service	25-NOVEMBER-2024				
Run Number	ONE				
Depth Driller or PBTD	7896'				
Depth Logger	4500'				
Bottom Log Interval	4500'				
Top Log Interval	SURFACE				
Open Hole Size	N/A				
Type Fluid	WATER				
Fluid Level	FULL				
Fluid Density	N/A				
Max. Recorded Temperature	258 DEG.F.				
Max. Wellhead Pressure	0 PSI				
Wellhead Connection	7-1/16" 5K				
Estimated Cement Top					
Unit Number	L-280679				
Wireline Size	.288"				
Location	BRIGHTON,CO				
Recorded By	HARPER				
Witnessed By	ALMAREZ				
Surface Casing	8-5/8"	Size	W/Ft	Top	Bottom
Production Casing	4.5"		24#	SURFACE	521'
Liner Casing	N/A		11.6#	SURFACE	7396'
Tubing Record	N/A		N/A	N/A	N/A

<<< Fold Here >>>

All interpretations are opinions based on inferences from electrical or other measurements and Ranger Energy Services cannot and does not guarantee the accuracy or correctness of any interpretation, and Ranger Energy Services will not be liable or responsible for any loss, costs, damages, or expenses incurred or sustained by anyone resulting from any interpretation made by any of our officers, agents or employees.

Comments

N/A DENOTES NOT AVAILABLE OR NON-APPLICABLE.

THANK YOU FOR USING RANGER ENERGY SERVICES! FIELD TICKET #

Your Ranger Energy Services Crew	Tool Data - Services	Serial Number
Engineer: HARPER Operator: BOND Operator: Operator:		

Quantity	Offset (ft)	Orientation	Description	Length (ft)	O.D. (in)	Weight (lb)
----------	-------------	-------------	-------------	-------------	-----------	-------------

Log Variables

DatabaseC:\ProgramData\Warrior\Data\oxy_palombo 23-4l_05-123-16686_11-25-24_scbl.db
 Dataset field/well/run1/pass9.1/_vars_

Top - Bottom

BOREID in 8.75	BOTTEMP degF 100	CASEOD in 7	CASETHCK in 0.408	CASEWGHT lb/ft 11.6	MAXAMPL mV 81	MINAMPL mV 1	MINATTN db/ft 0.8
PERFS No	PPT usec 262	SRFTEMP degF 0	TDEPTH ft 0				

Variable Description

BOREID : Borehole I.D.
 BOTTEMP : Bottom Hole Temperature
 CASEOD : Casing O.D.
 CASETHCK : Casing Thickness

CASEWGHT : Casing Weight
 MAXAMPL : Maximum Amplitude
 MINAMPL : Minimum Amplitude
 MINATTN : Minimum Attenuation

PERFS : Perforation Flag
 PPT : Predicted Pipe Time
 SRFTEMP : Surface Temperature
 TDEPTH : Total Depth

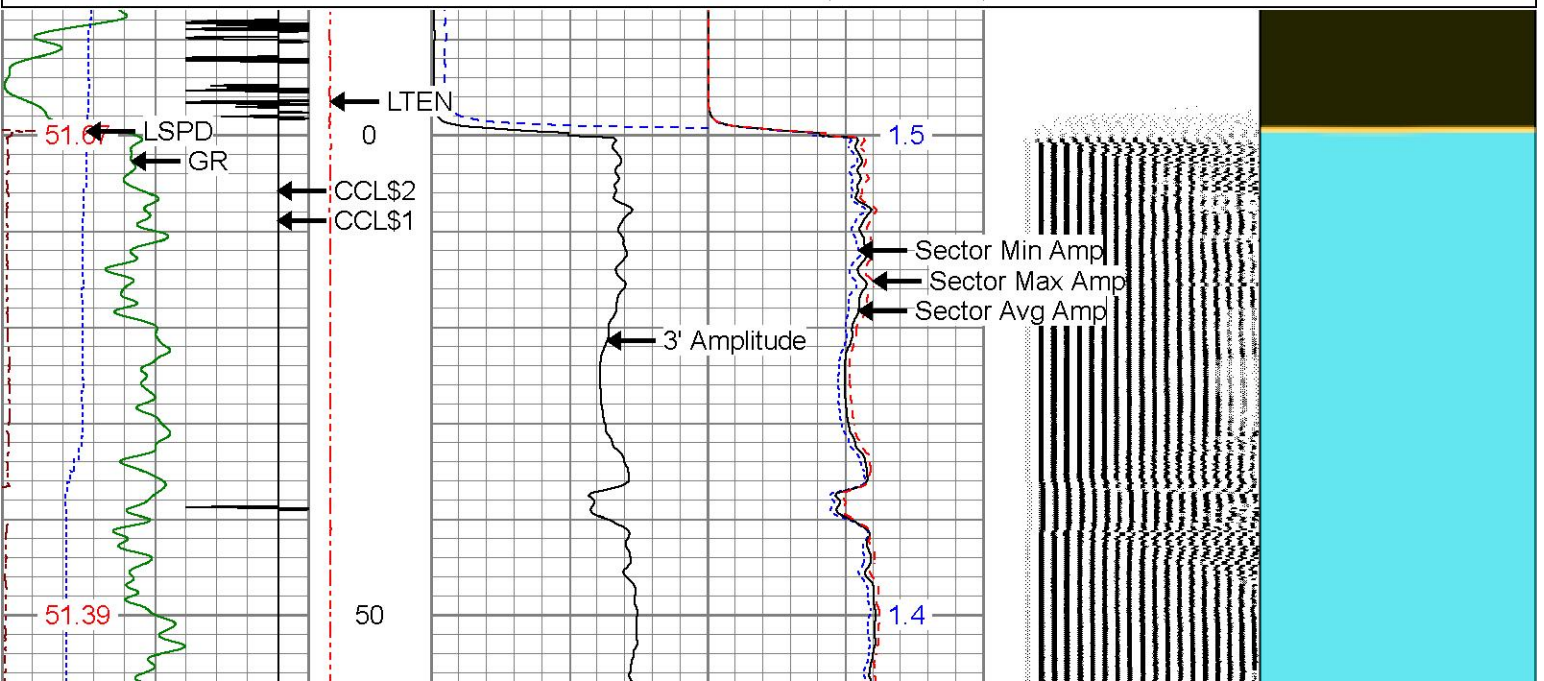


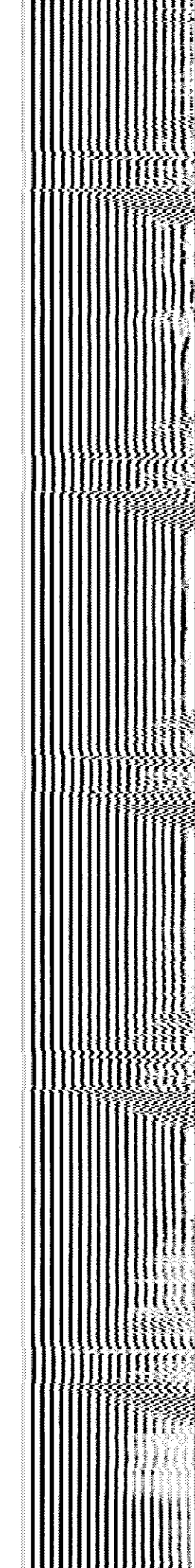
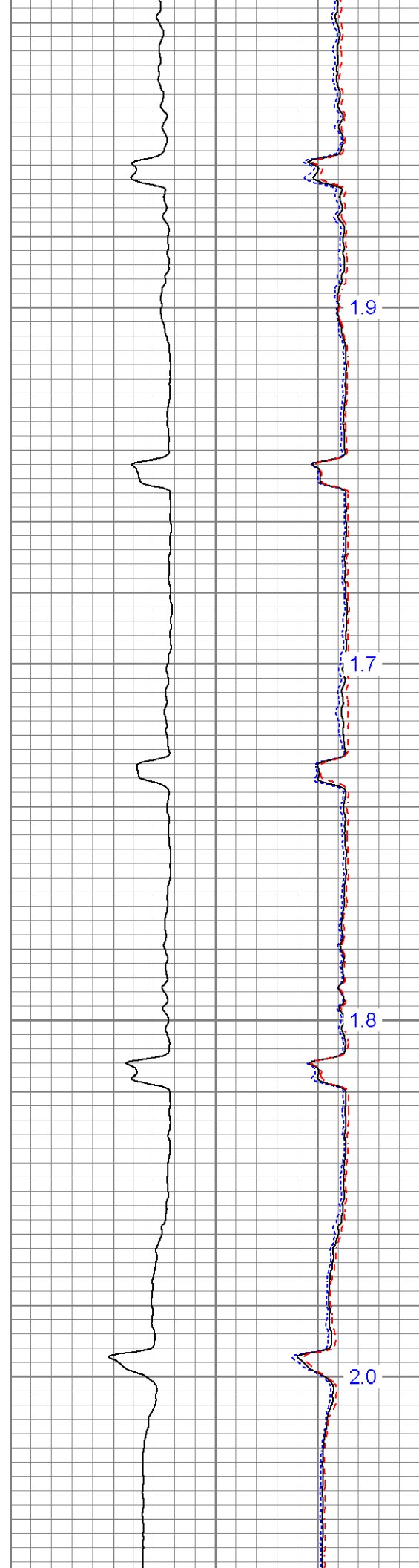
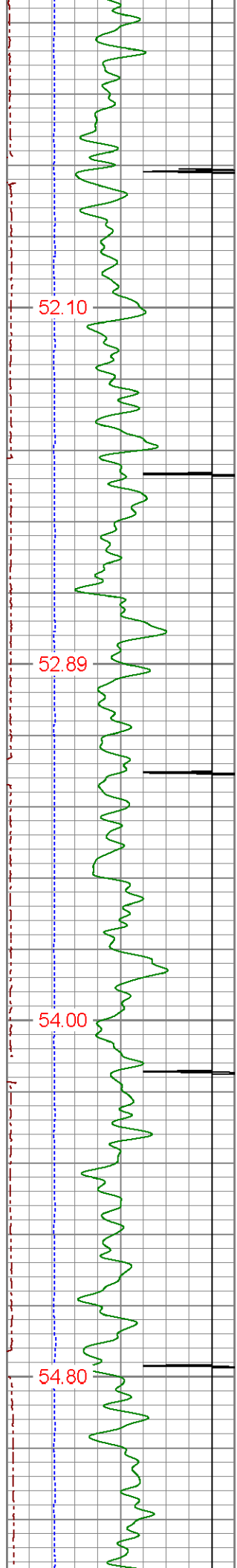
MAIN PASS

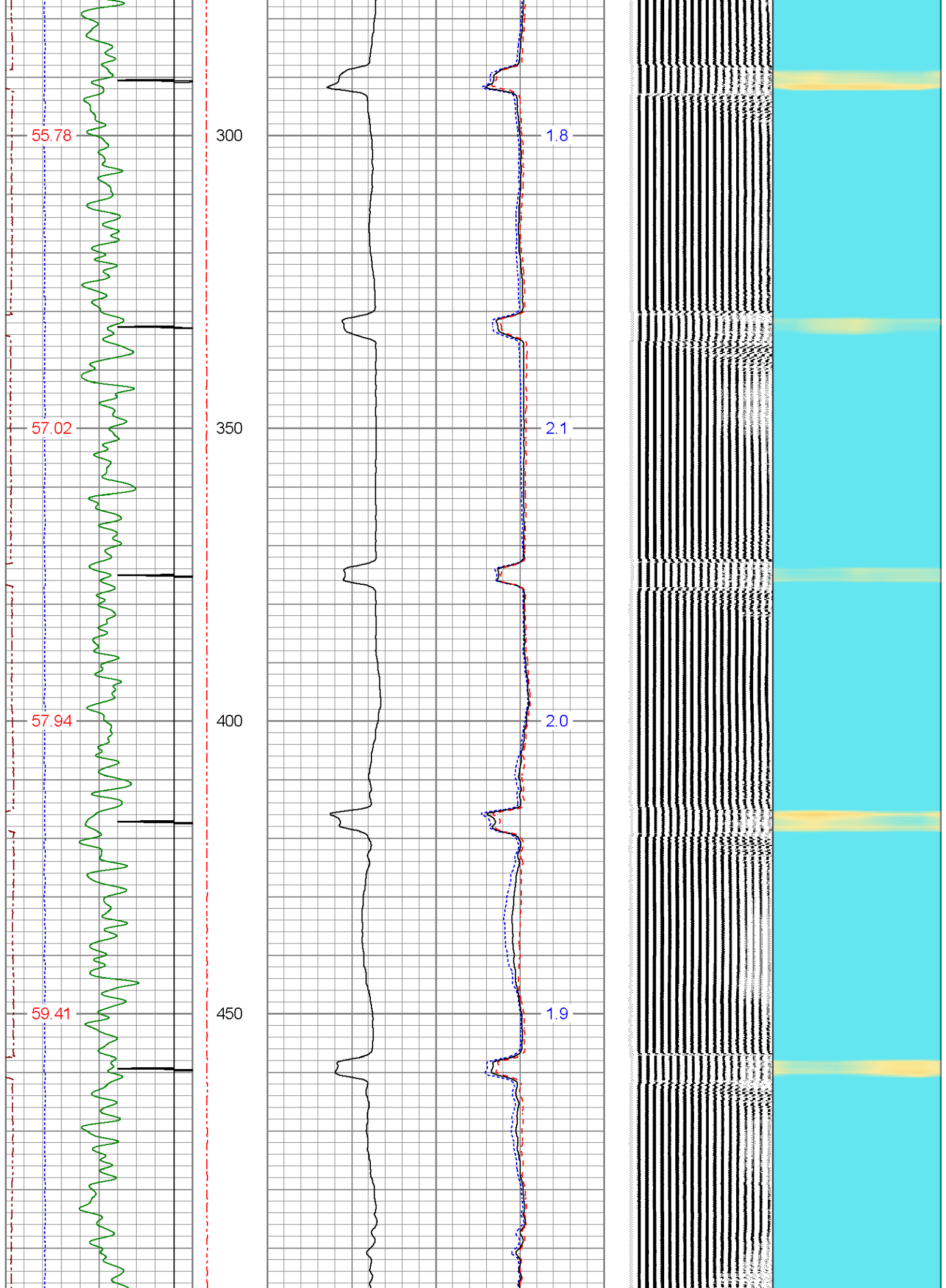
0 PSI APPLIED AT SURFACE

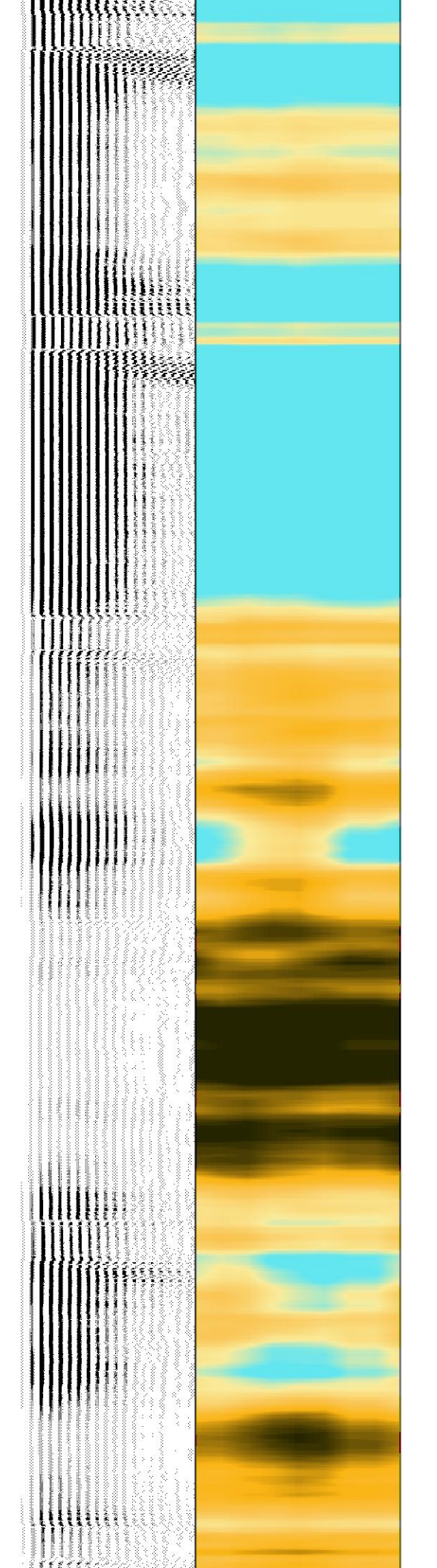
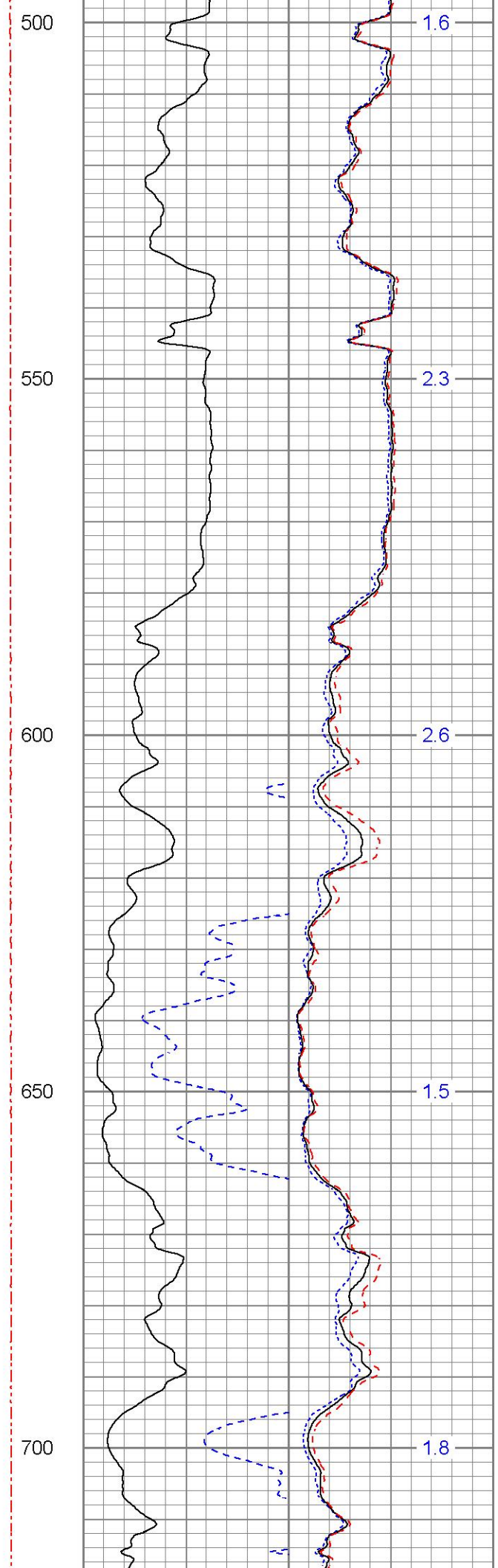
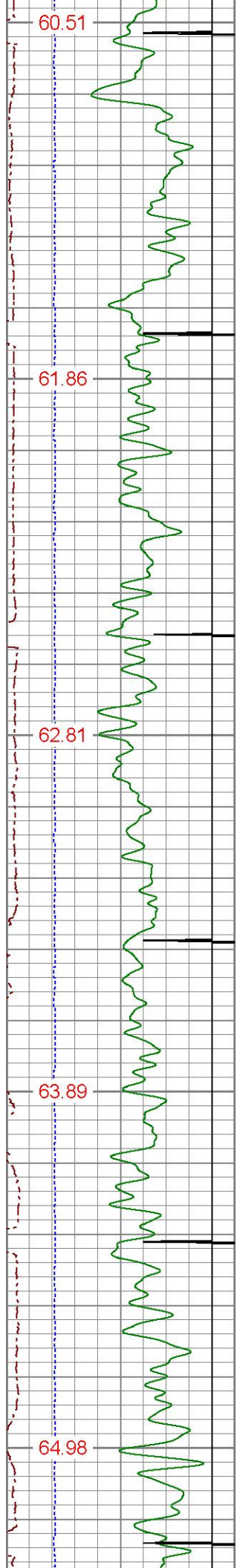
Database File oxy_palombo 23-4l_05-123-16686_11-25-24_scbl.db
 Dataset Pathname pass9.1
 Presentation Format res_scbl 8sec-gr-ccl
 Dataset Creation Mon Nov 25 14:19:18 2024
 Charted by Depth in Feet scaled 1:240

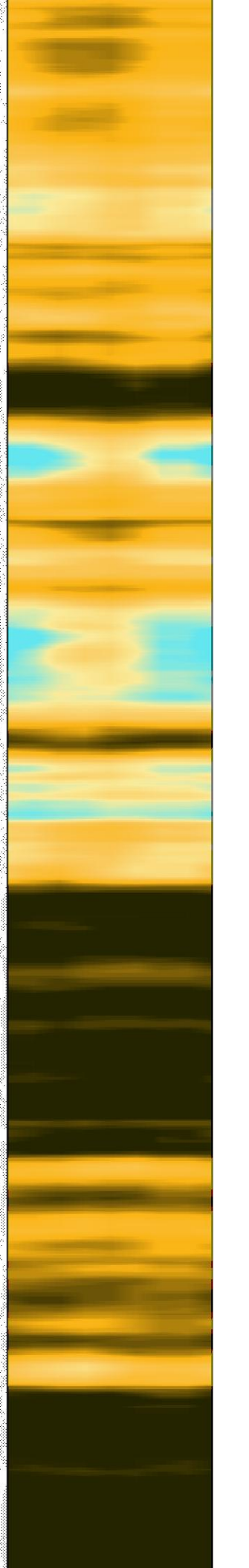
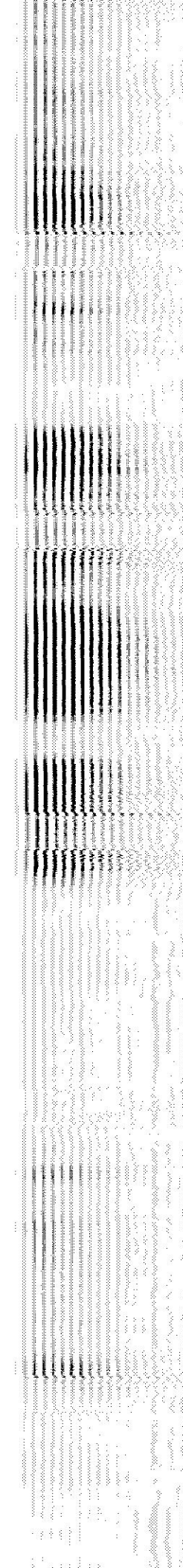
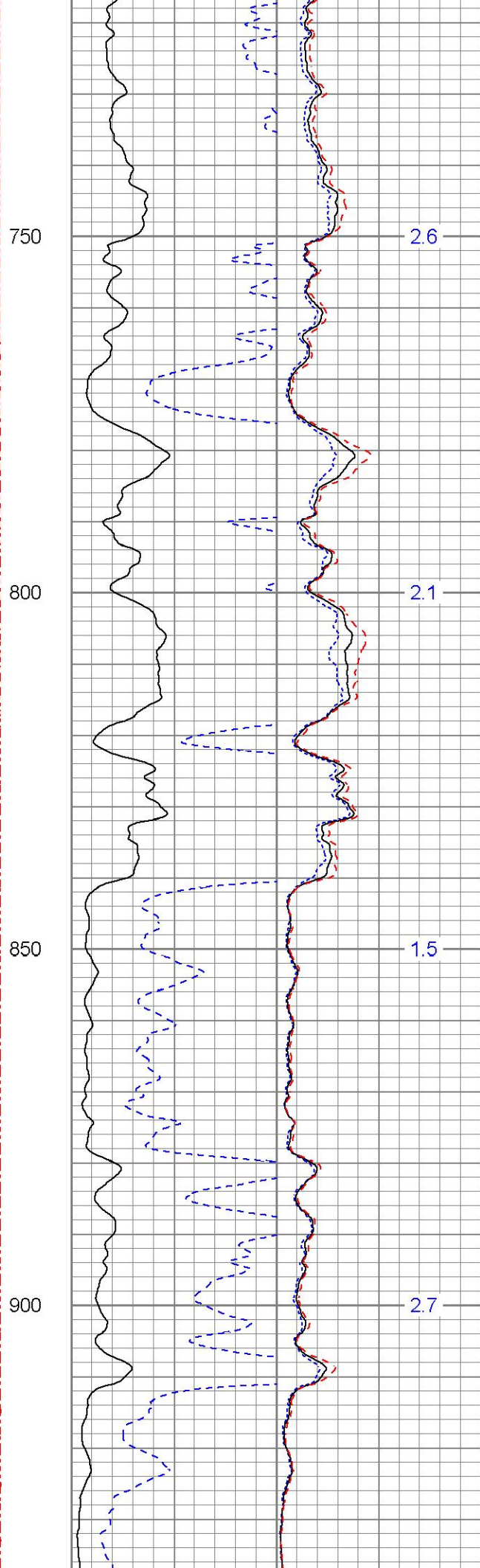
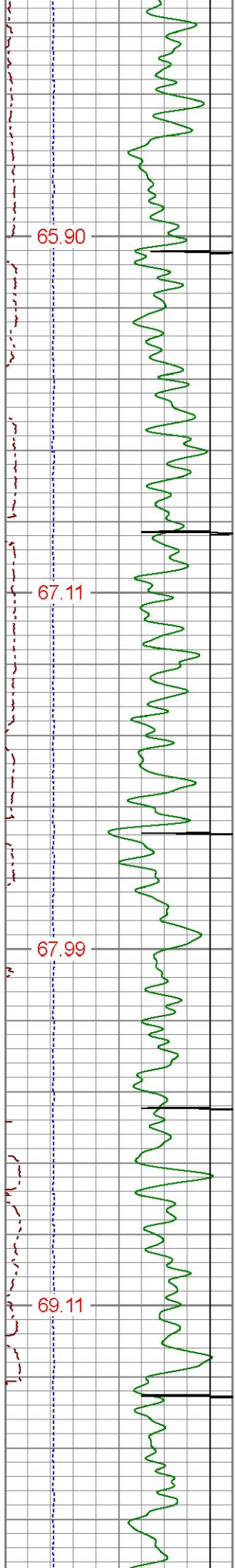
290 3FT TT (usec) 190	LTEN	3' Amplitude	0 Sector Min Amp150	200 VDL (usec) 1200	1 Sector Map 8
0 GR (GAPI) 150	(lb)	(mV) 100	Sector Avg Amp		
-150 LSPD (ft/min) 150	0 2000	3' Amplified	0 150		
-9 CCL\$1 1		Amplitude X 5	Sector Max Amp		
GCT_Temp		(mV) 20	0 150		
(degF)			DEVIATION		
			(deg)		

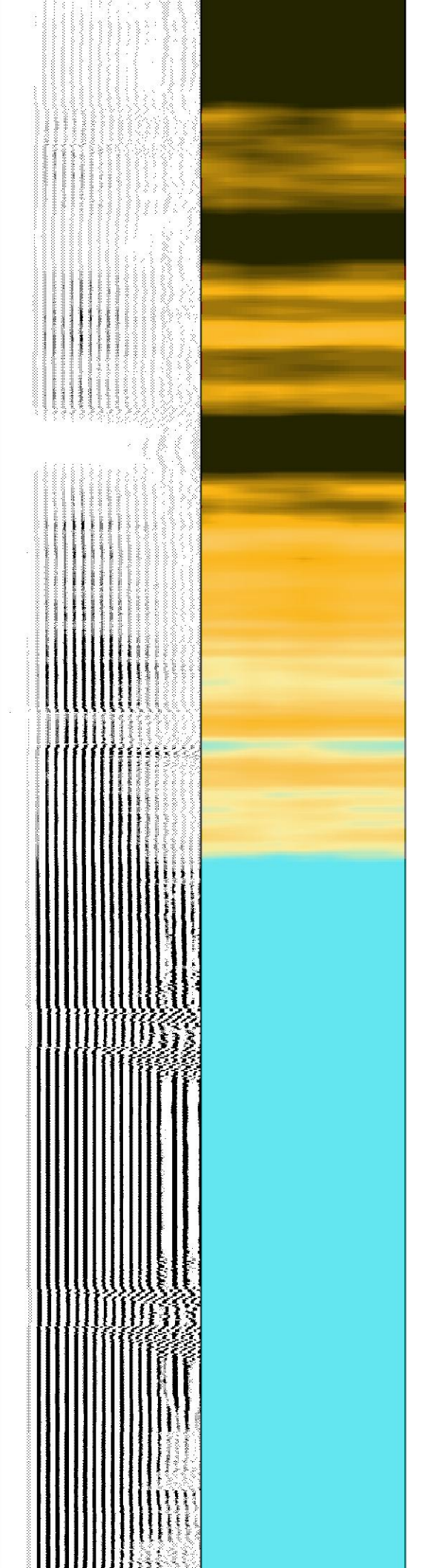
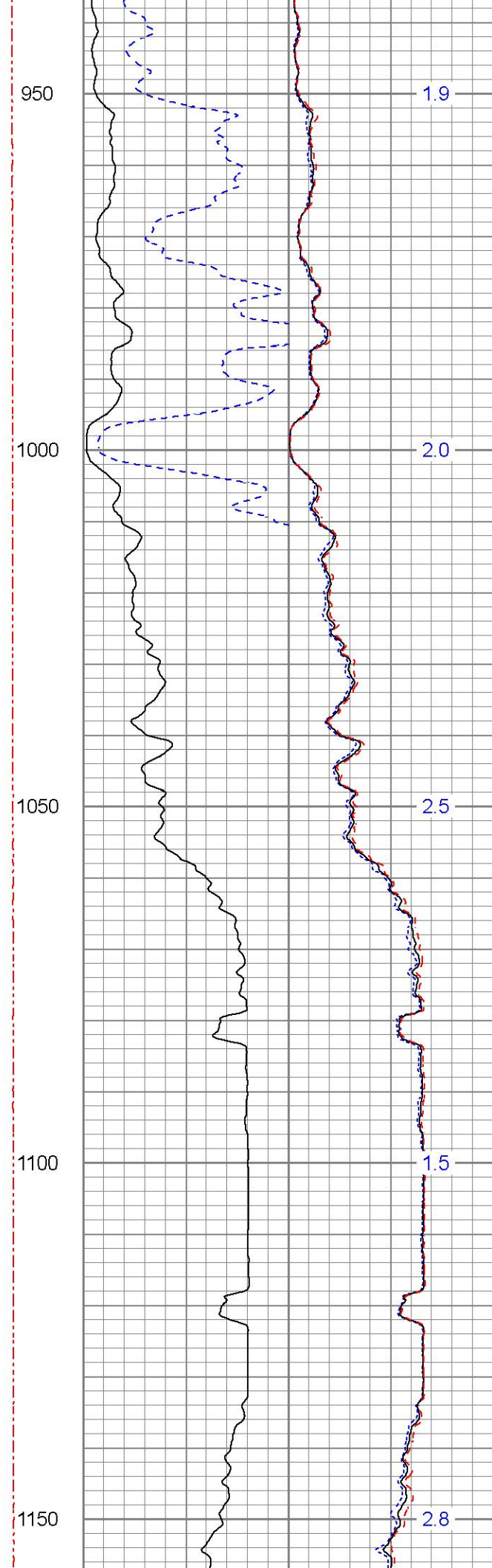
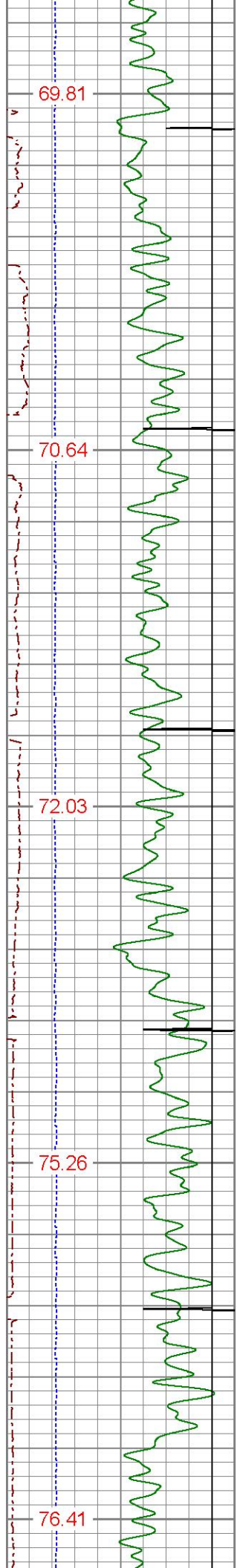


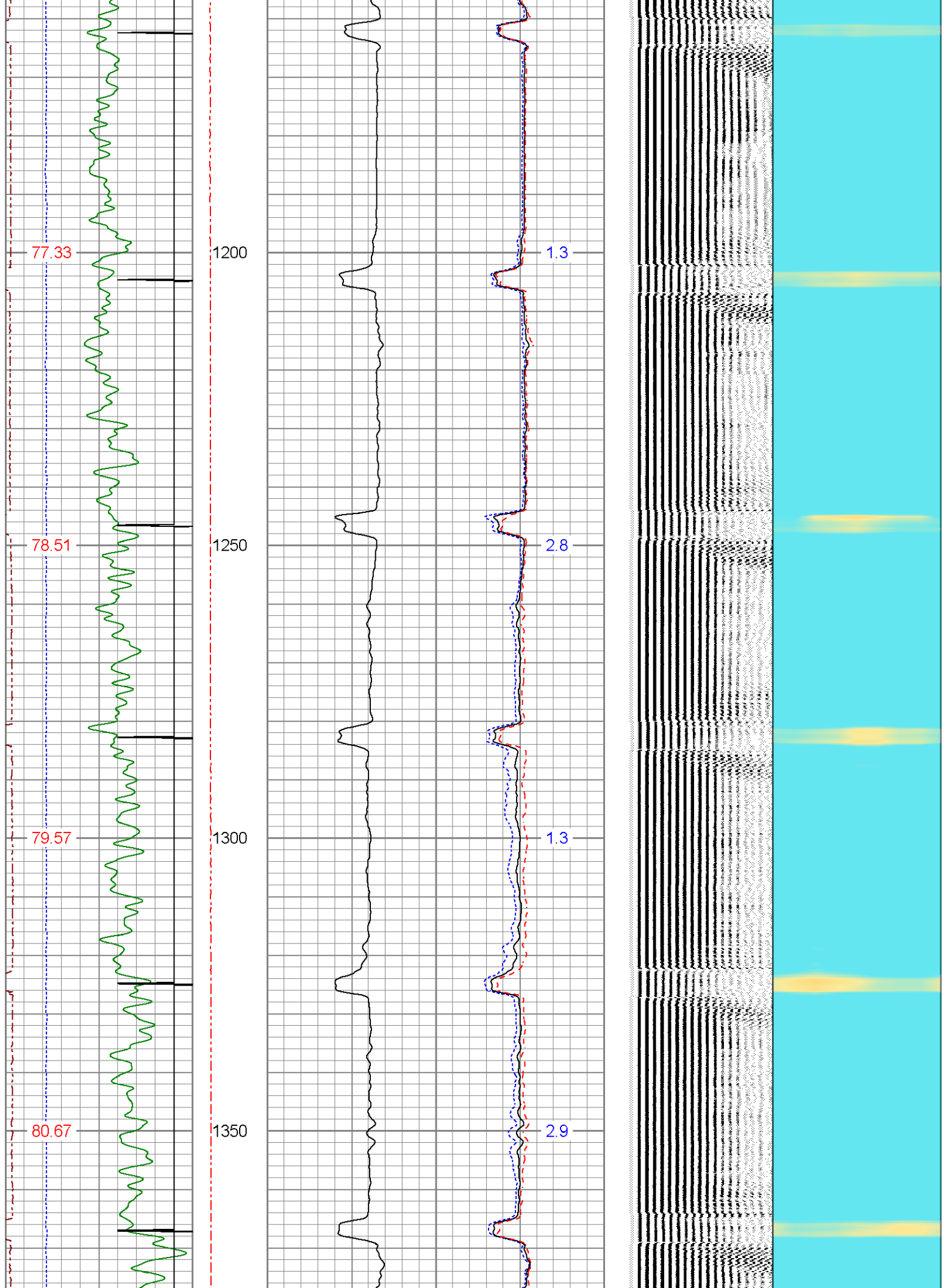


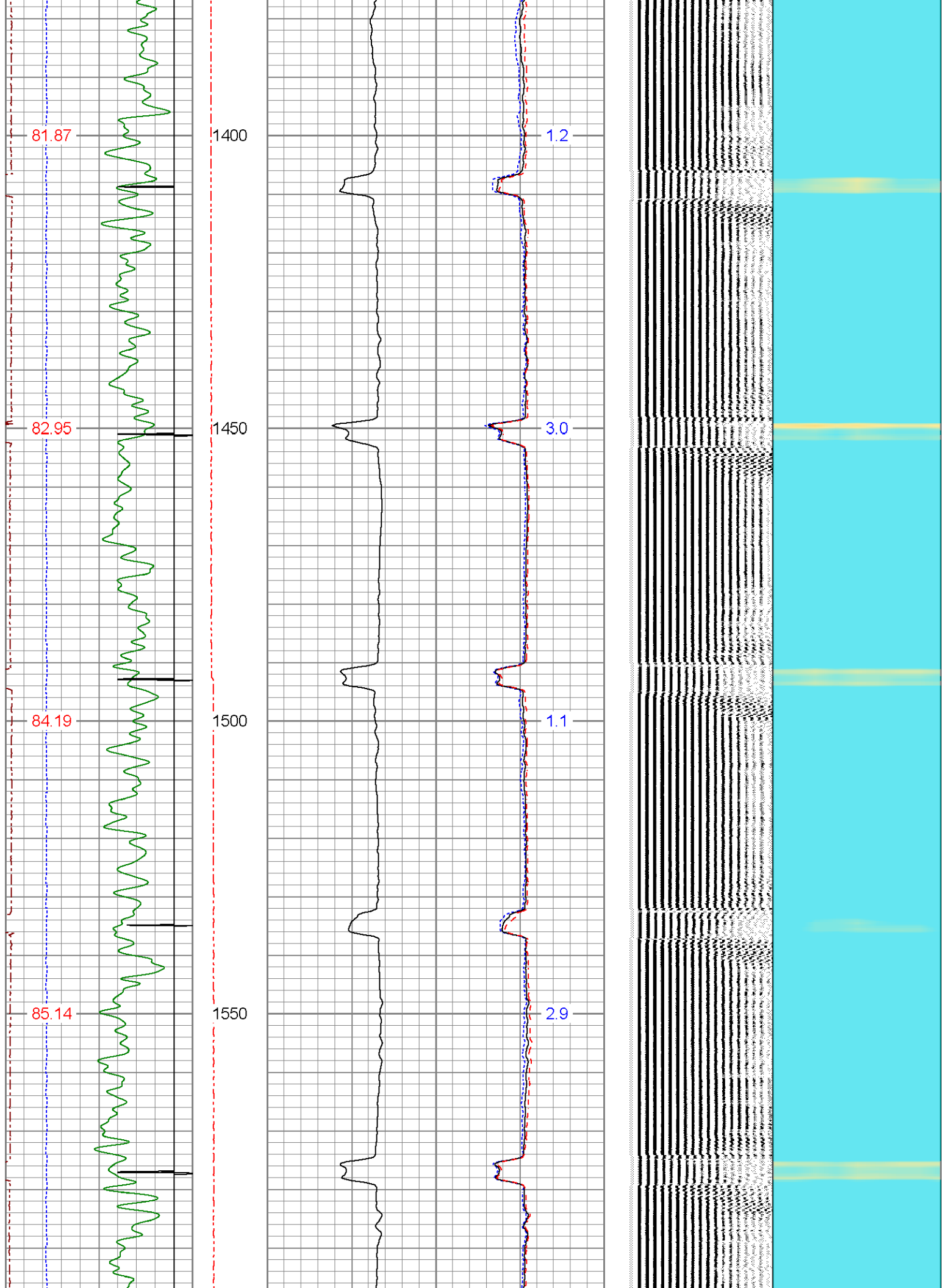


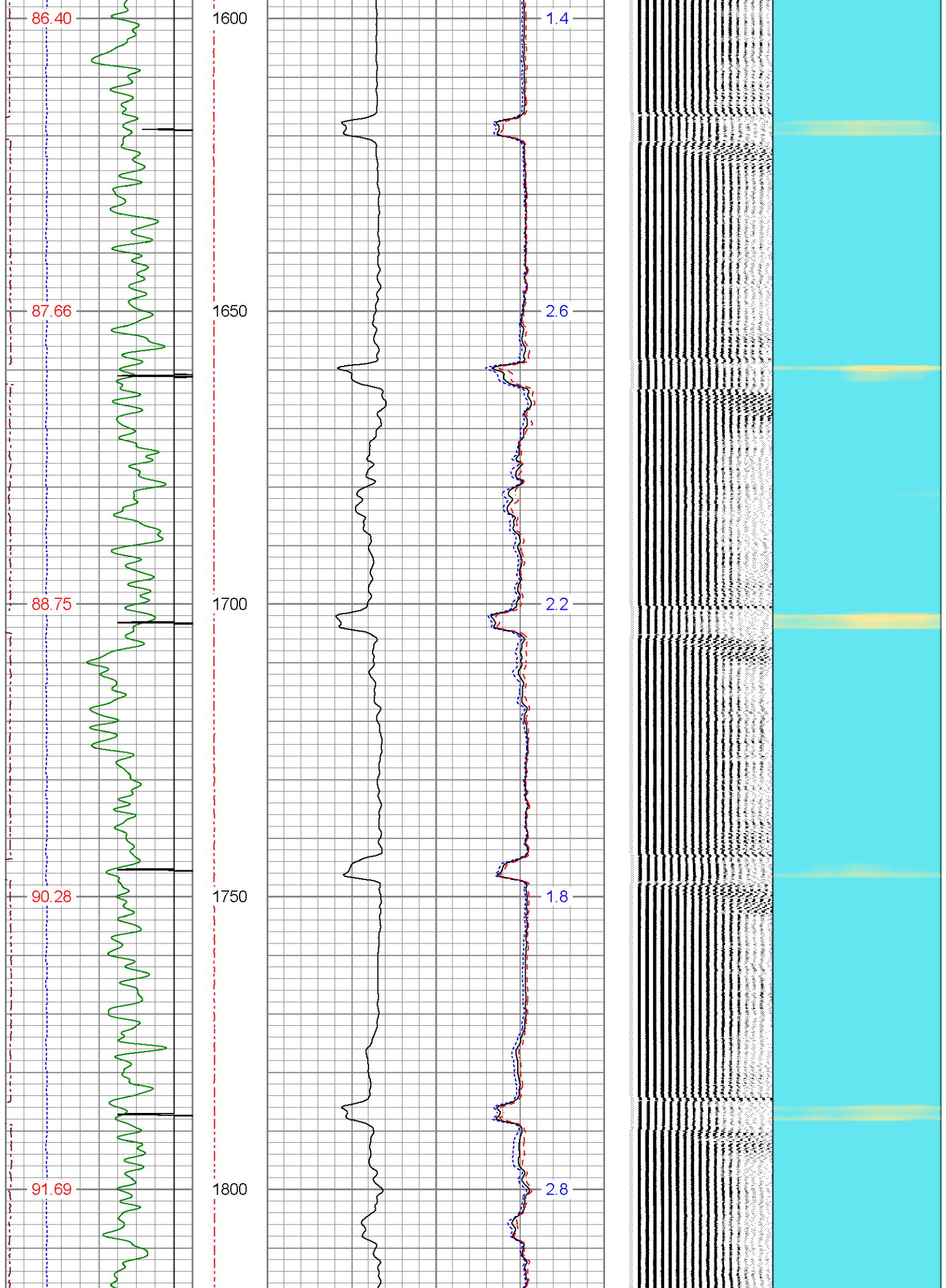


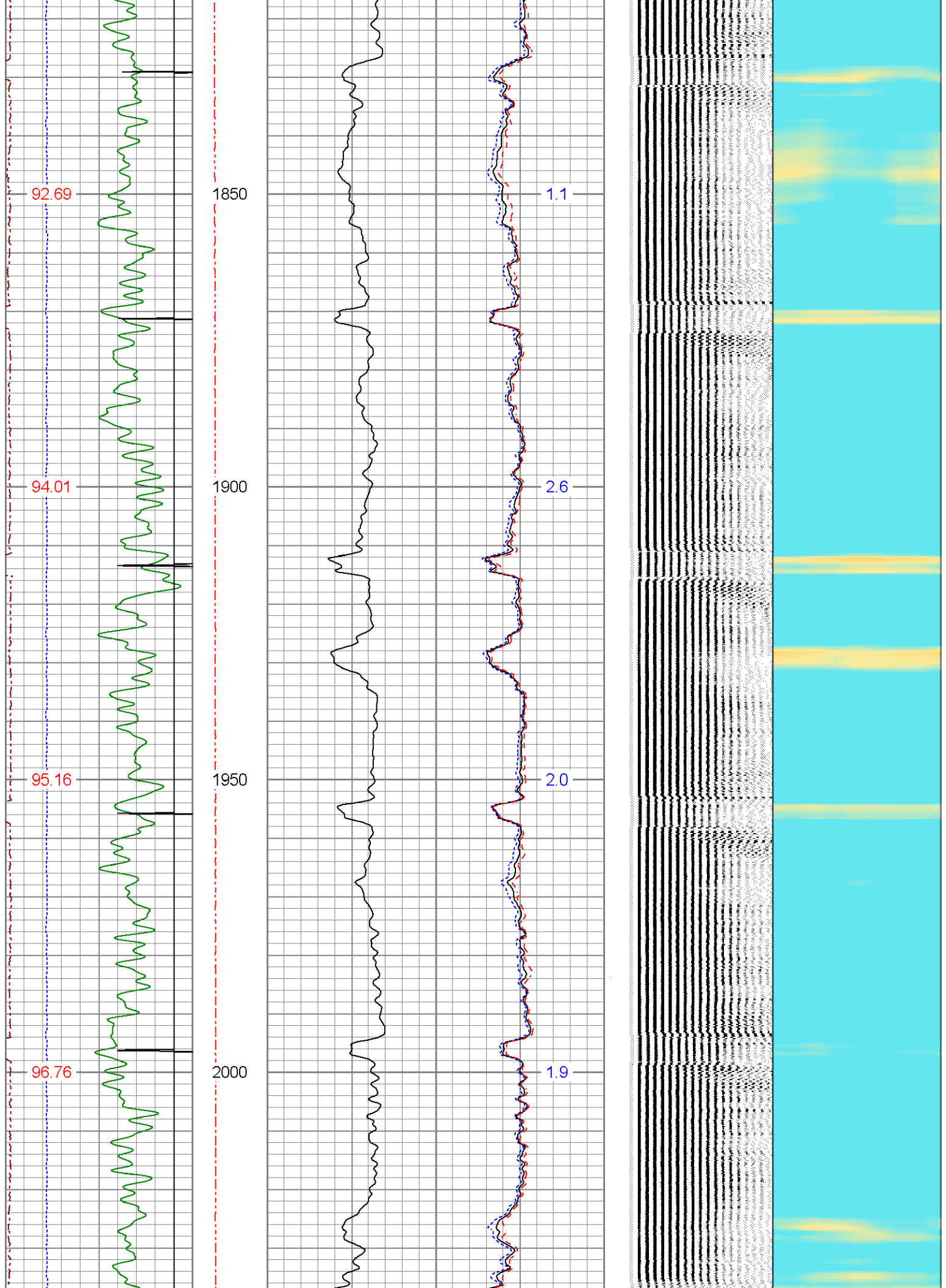


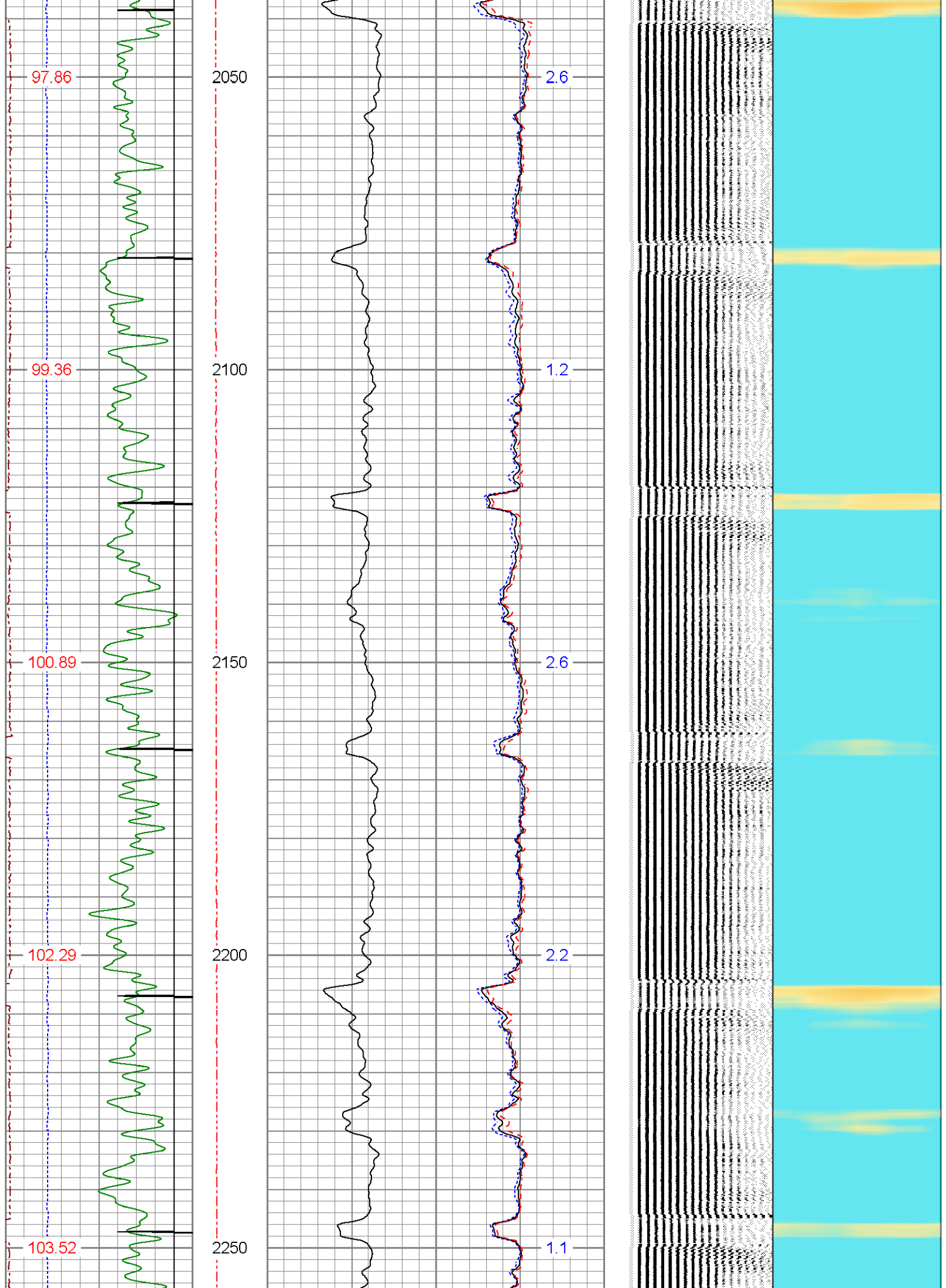


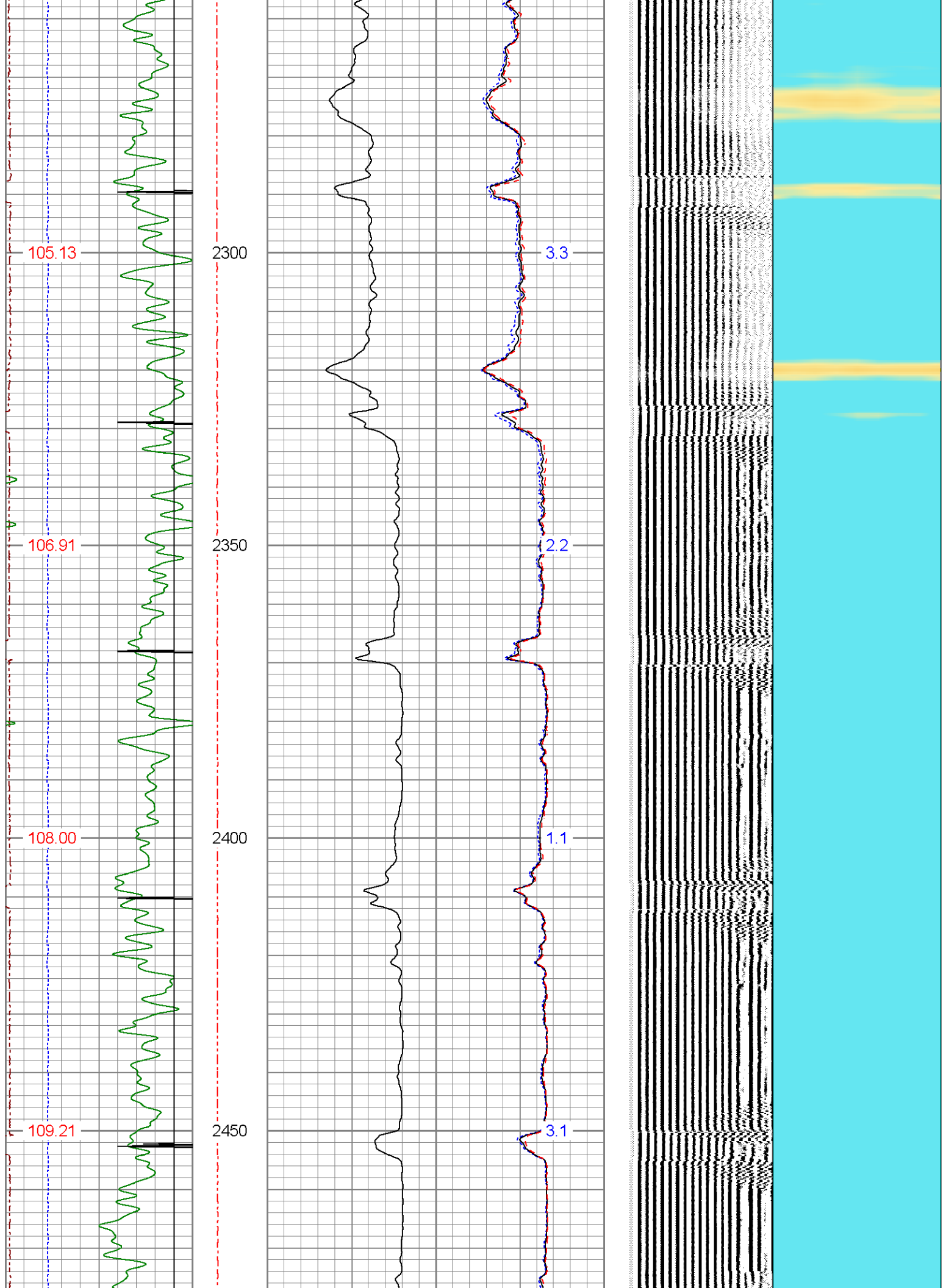


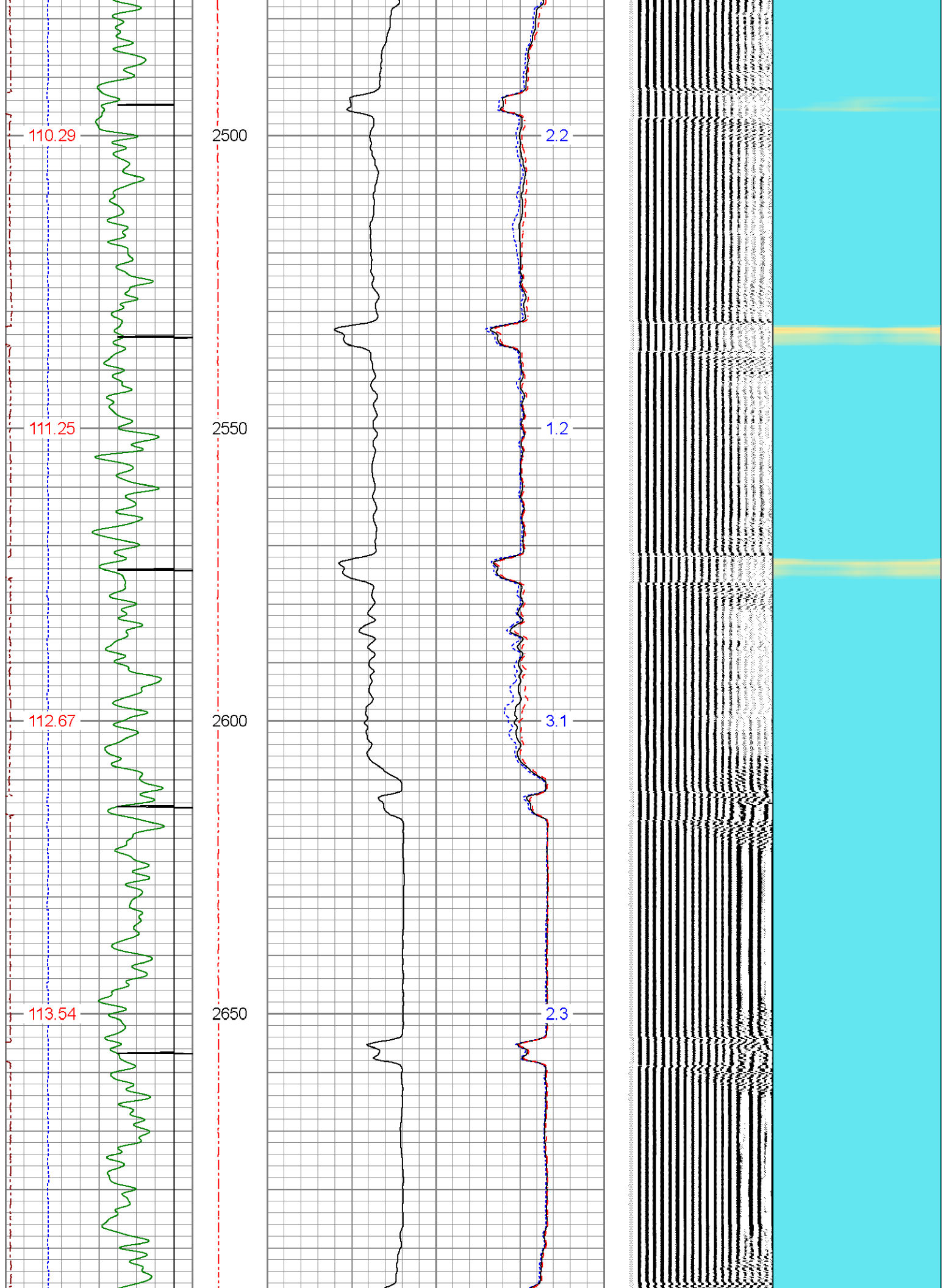


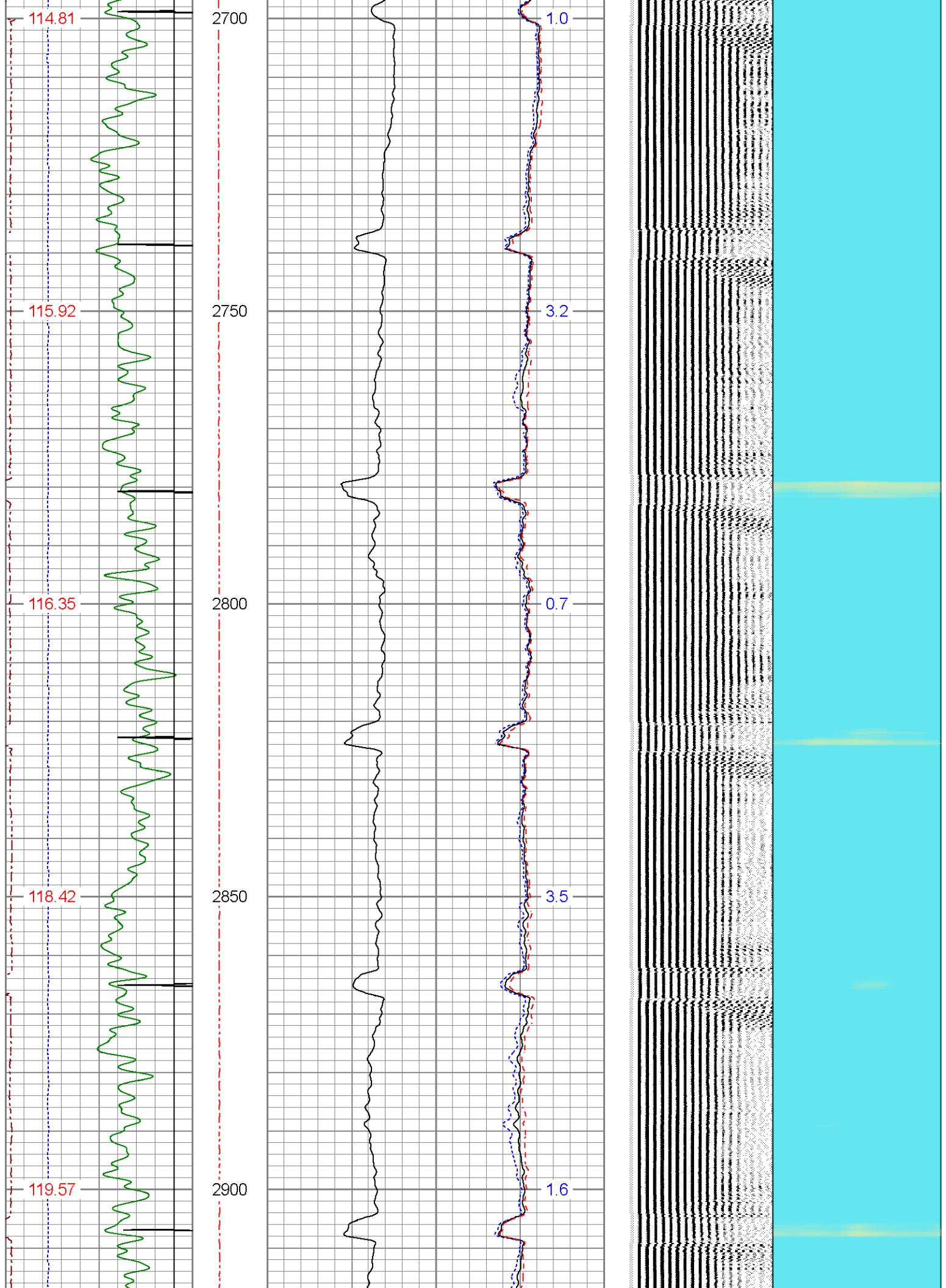


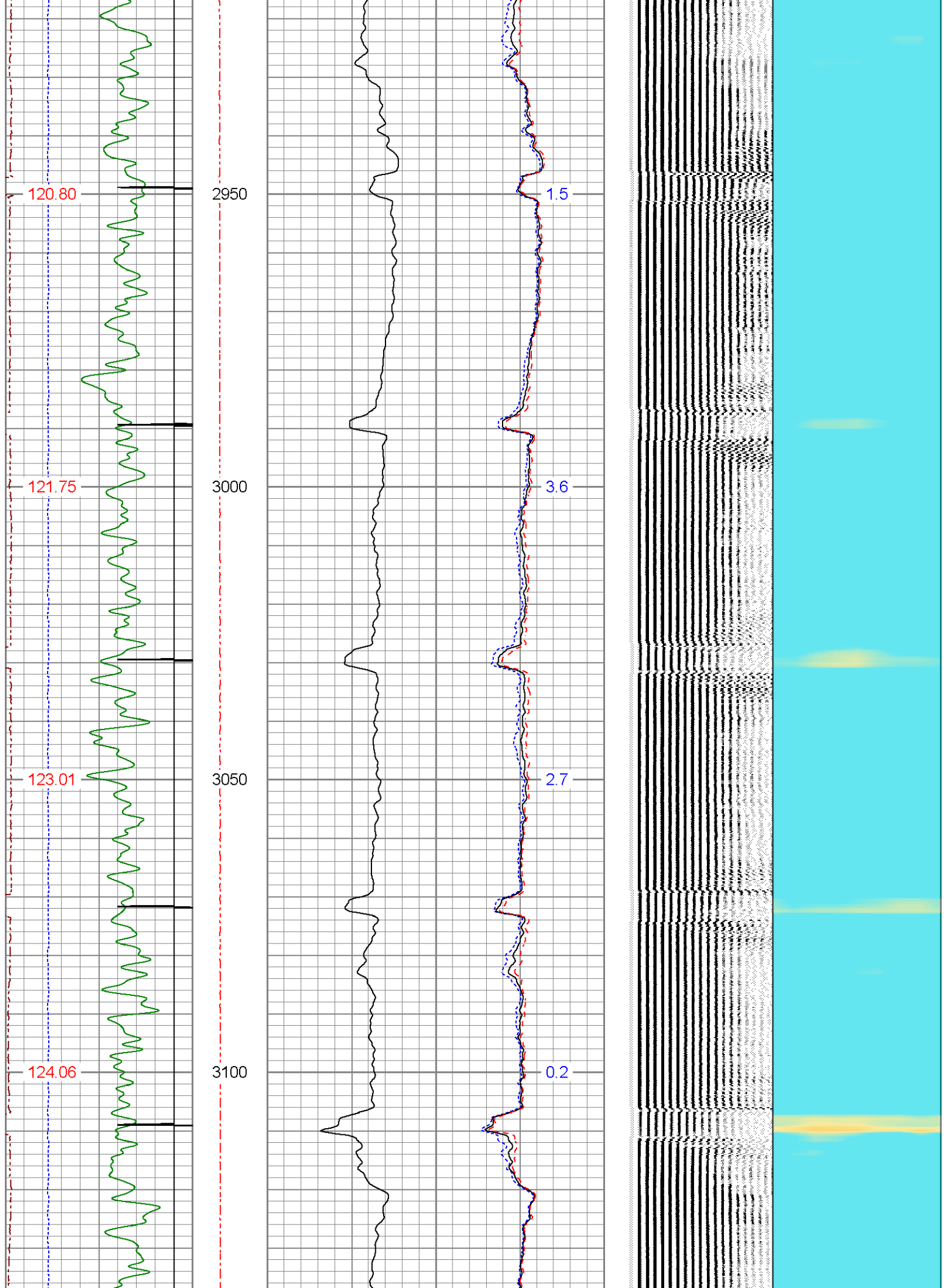


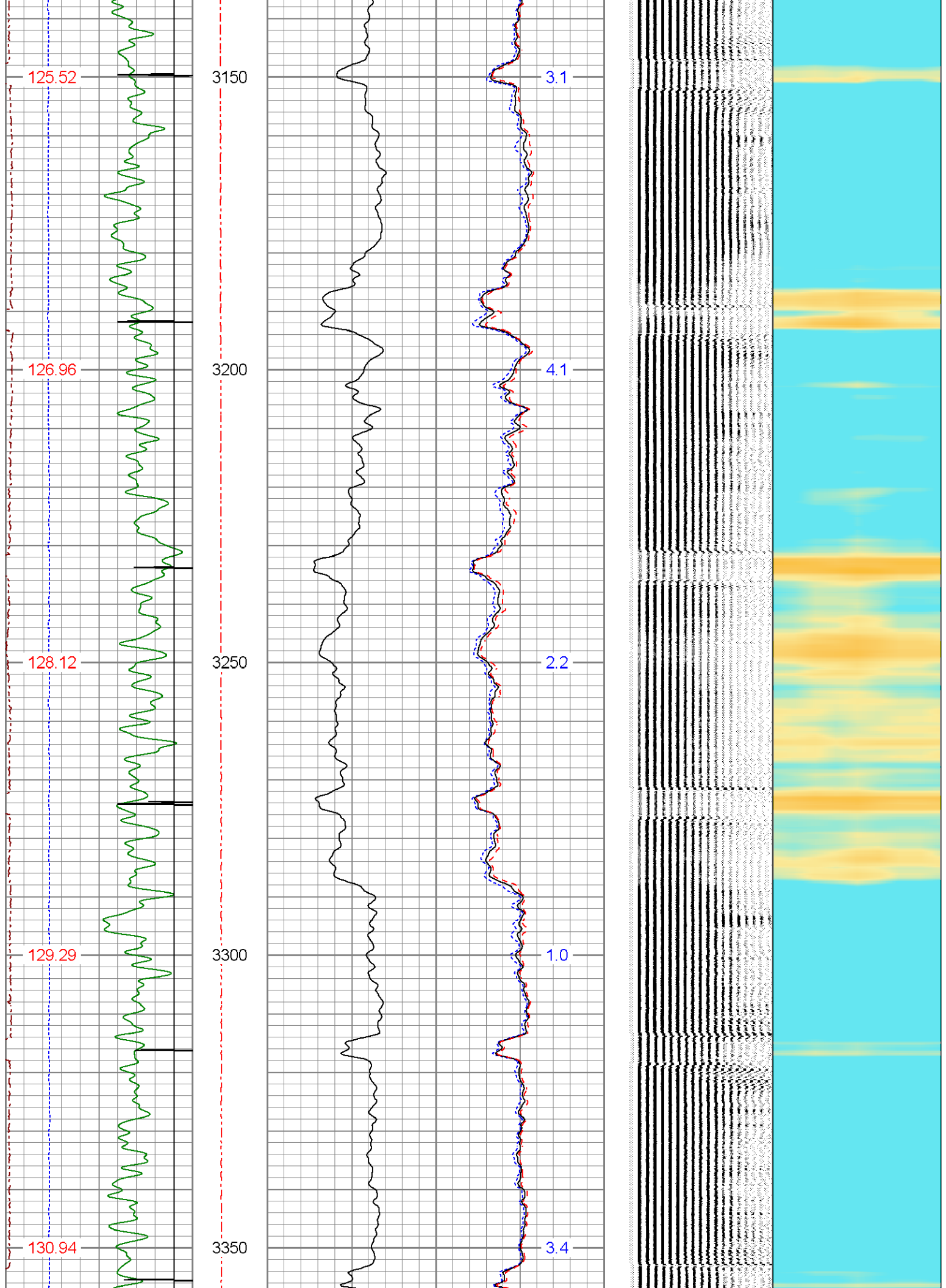


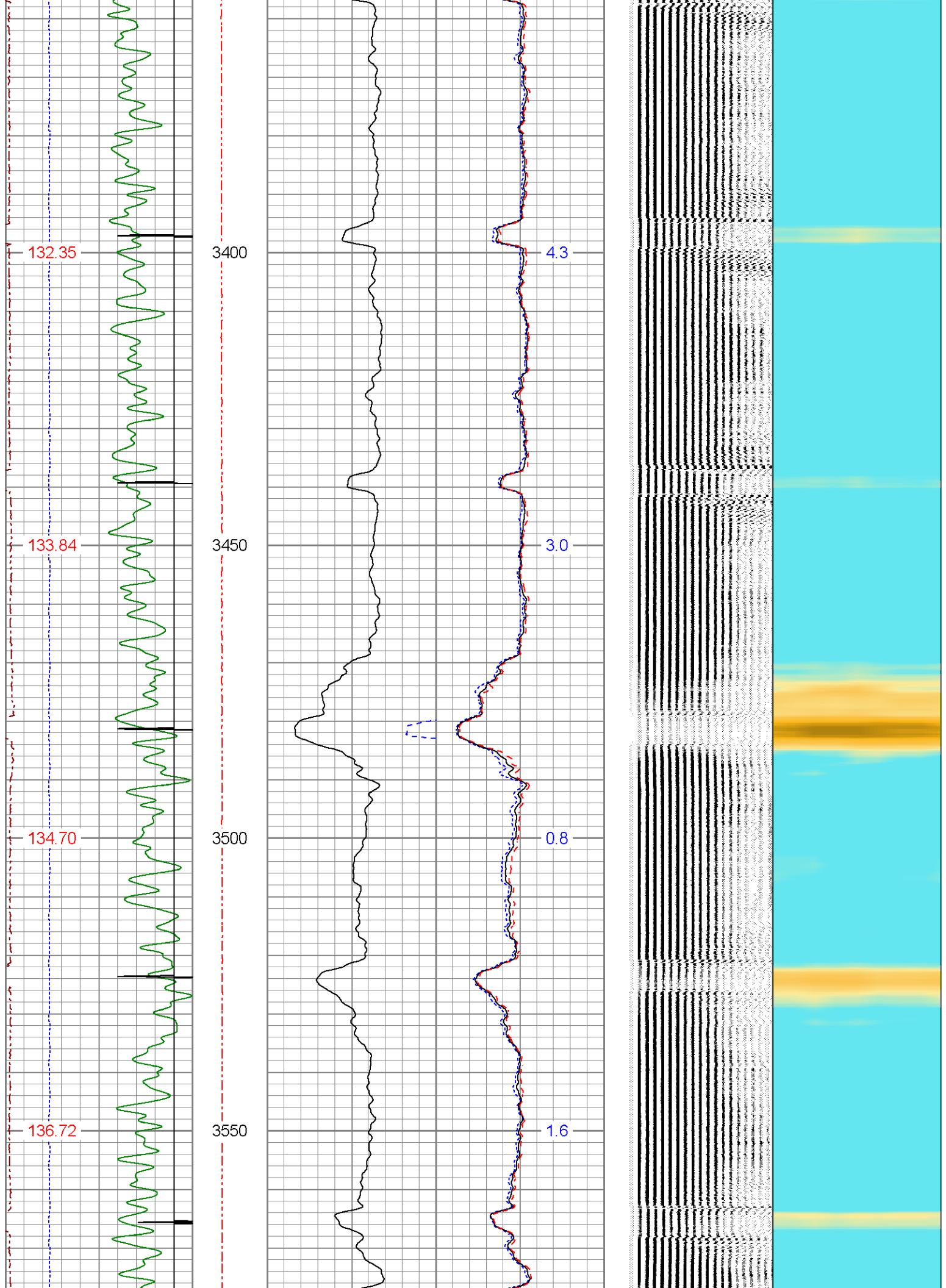


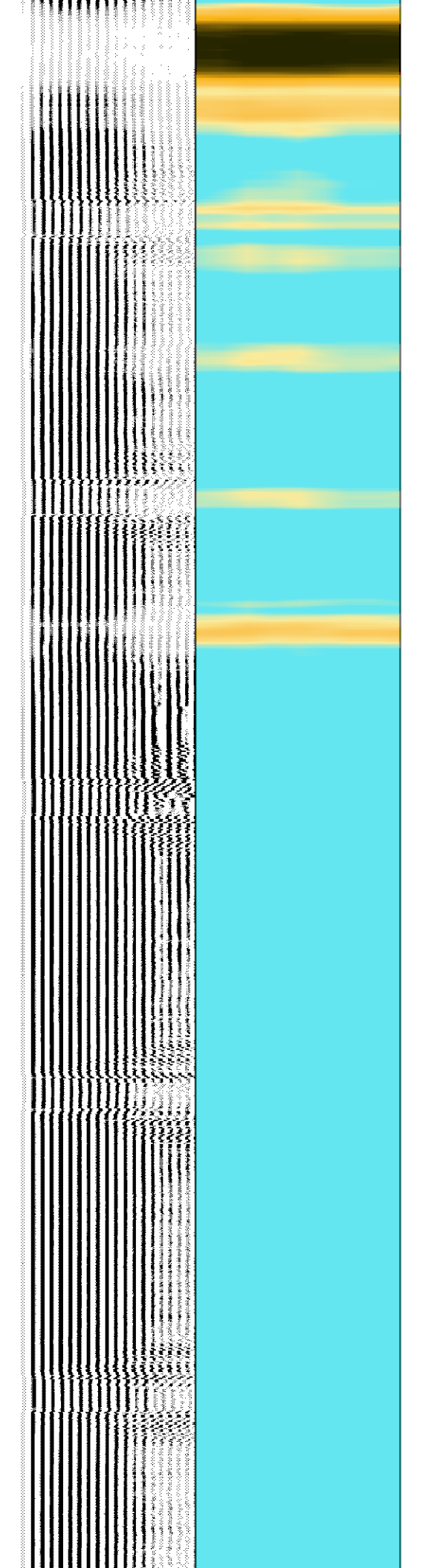
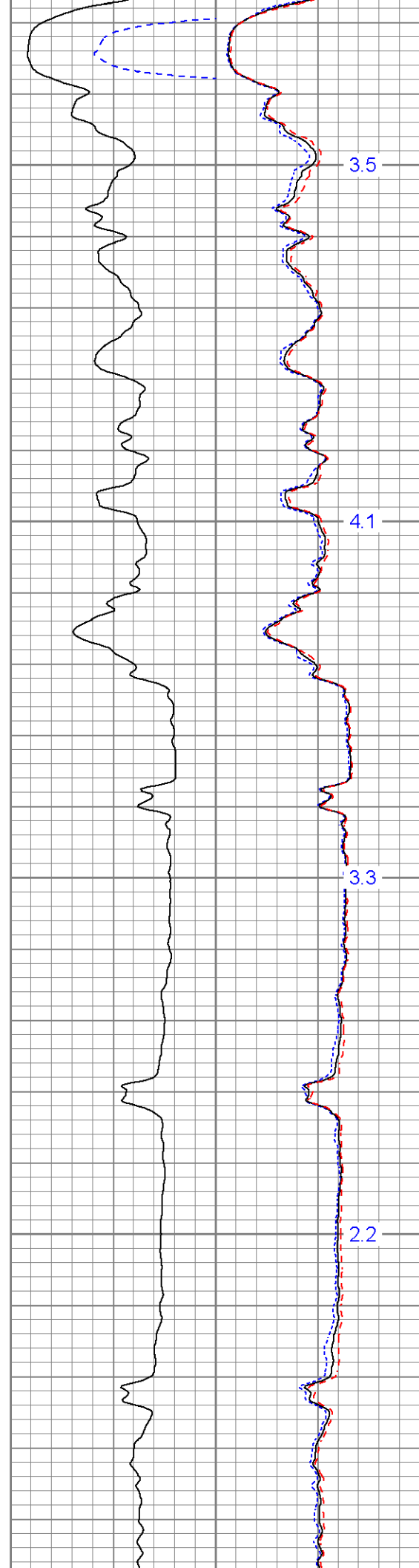
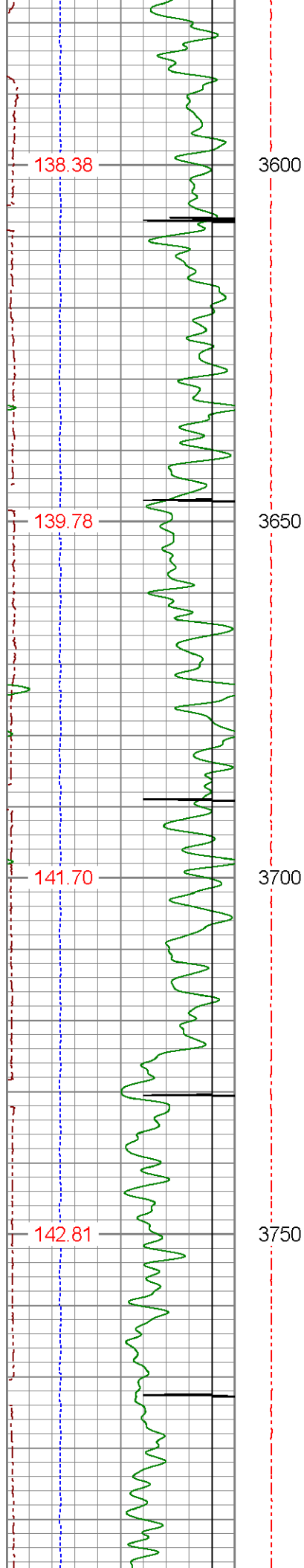


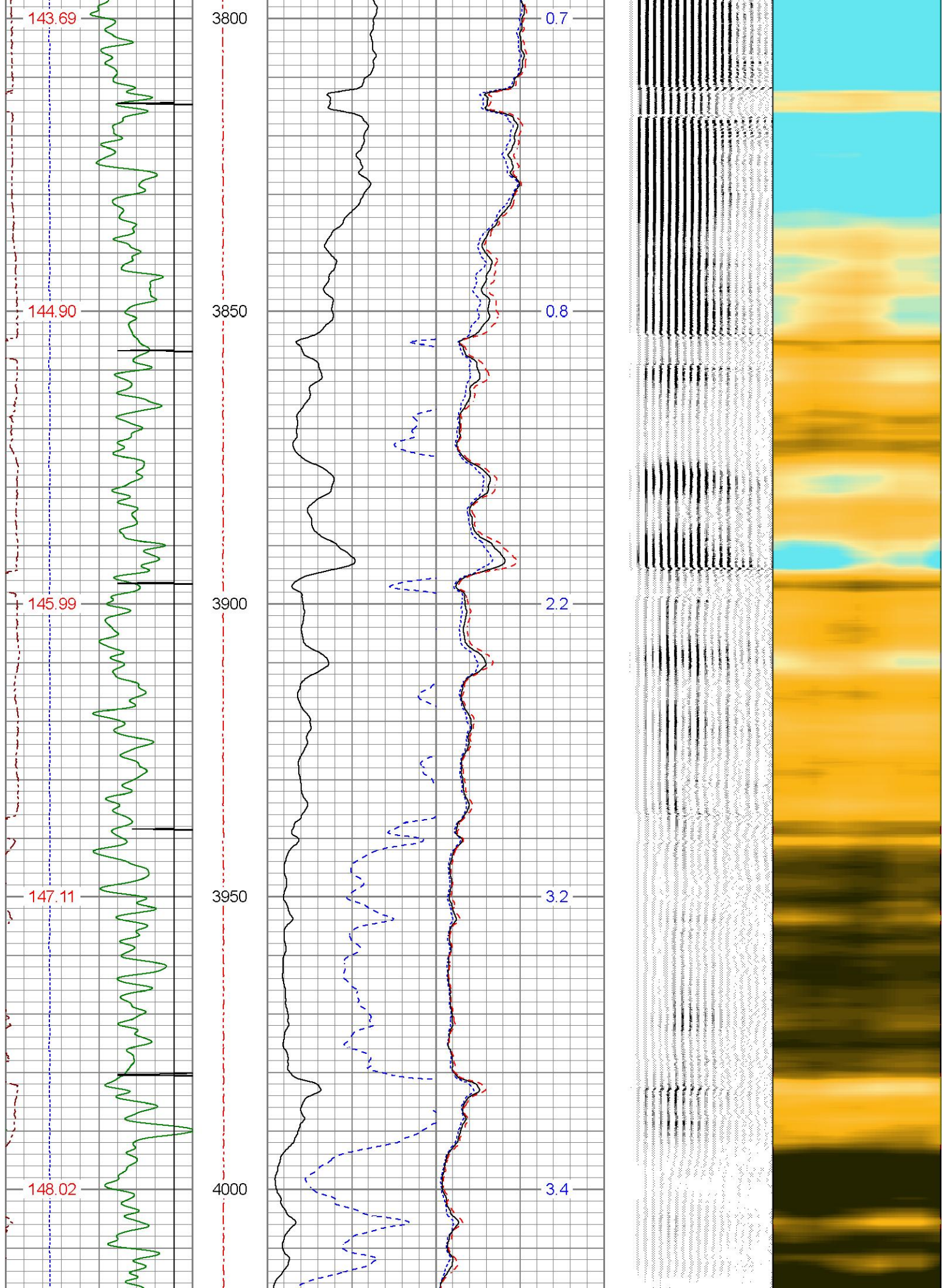


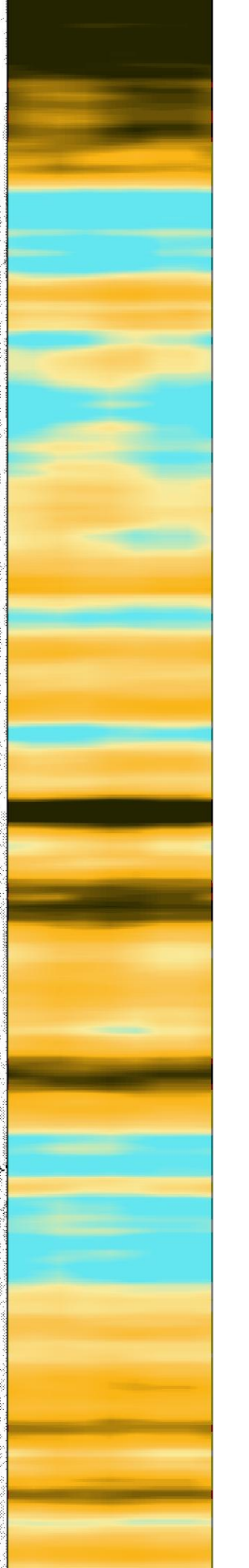
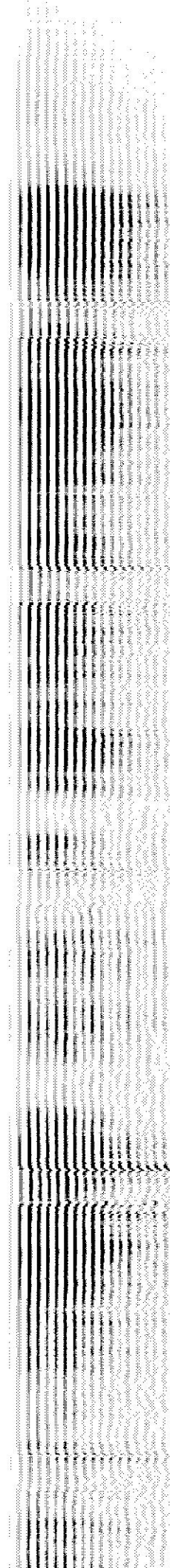
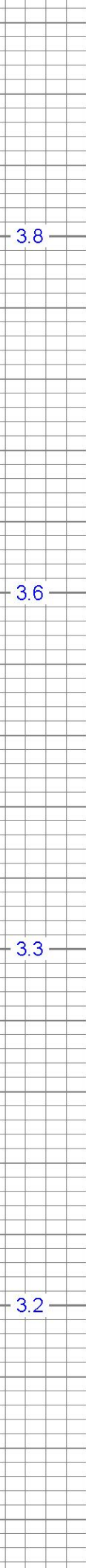
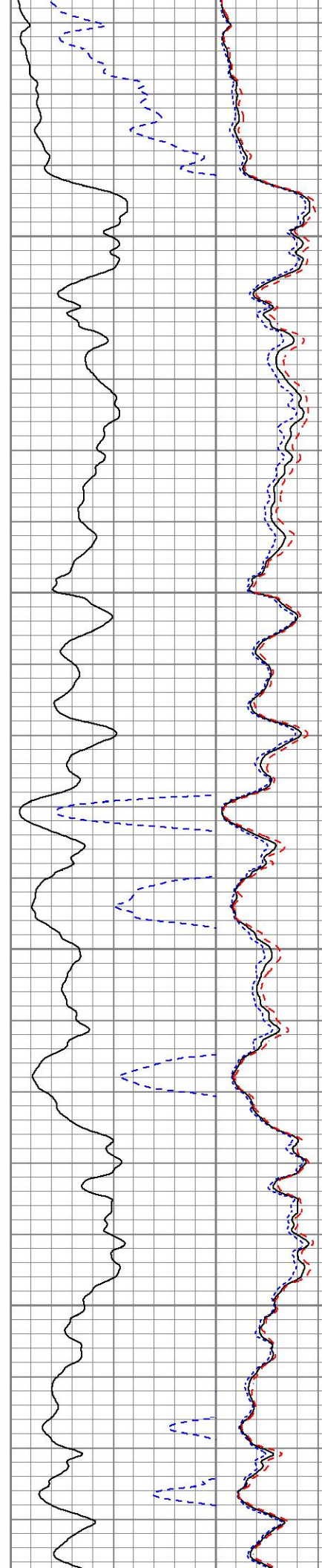
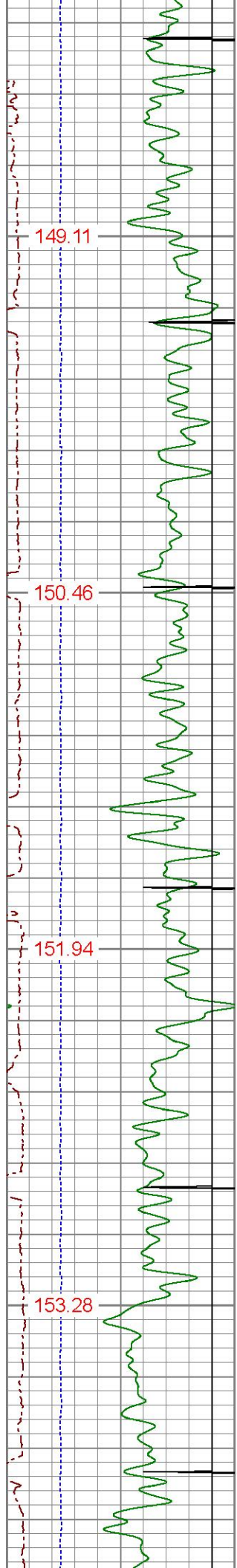


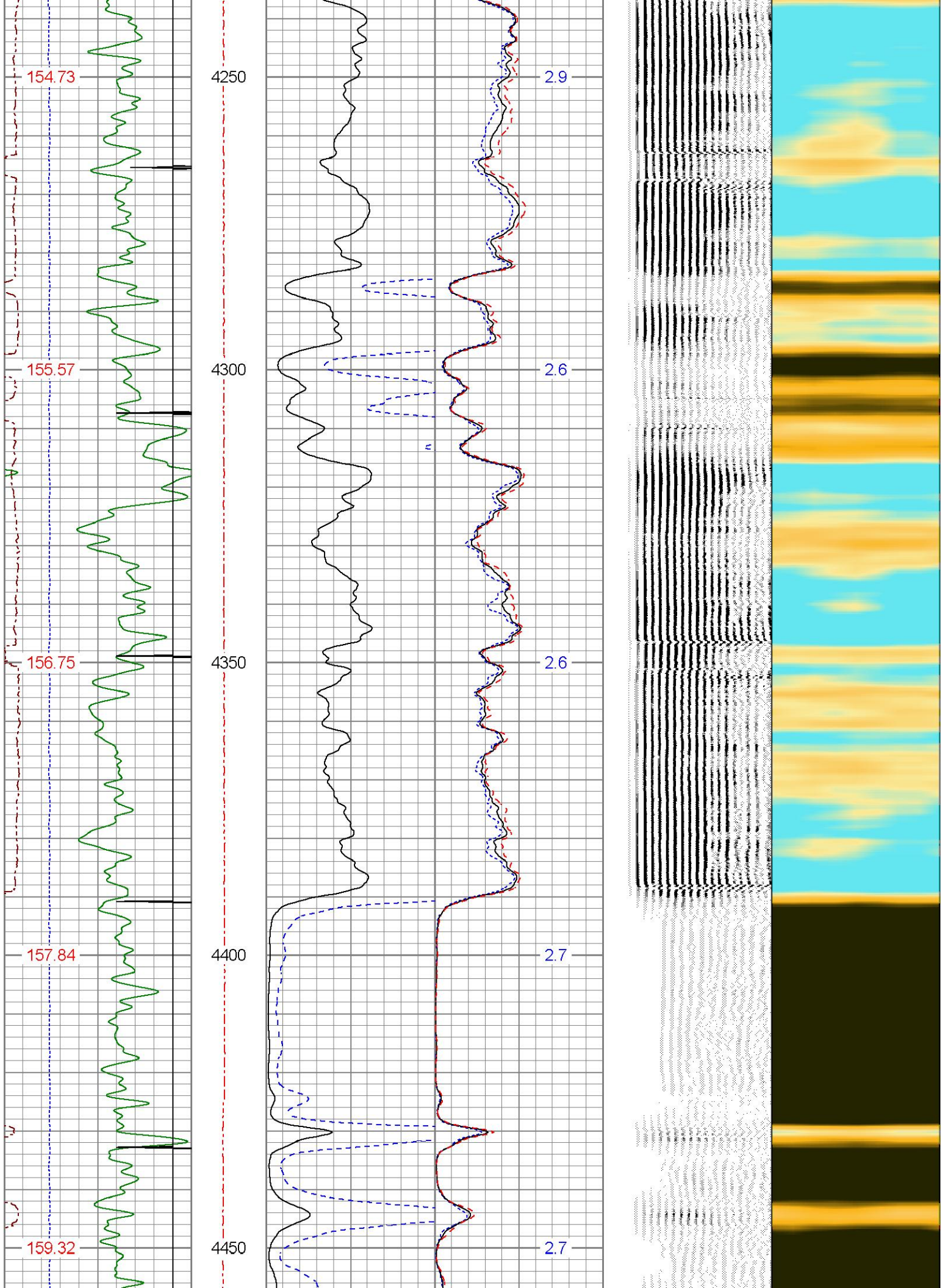


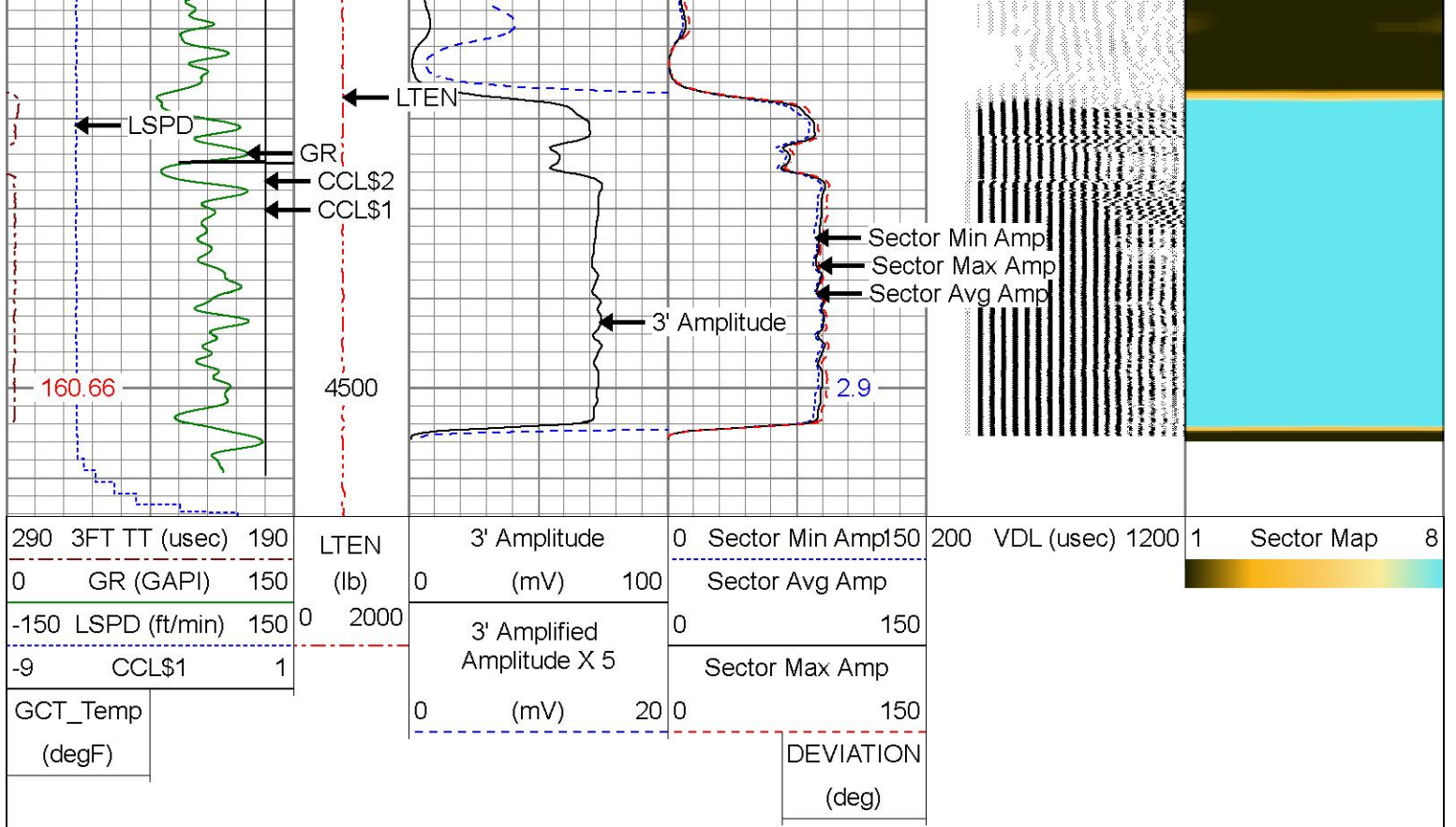












MAIN PASS

0 PSI APPLIED AT SURFACE

Calibration Report

Database File oxy_palombo 23-4l_05-123-16686_11-25-24_scbl.db
 Dataset Pathname pass9.1
 Dataset Creation Mon Nov 25 14:19:18 2024

Gamma Ray Calibration Report

Serial Number: GCT275-0BP0_base
 Tool Model: GCT275-0BP0
 Performed: Tue Aug 20 09:19:13 2024

Calibrator Value: 1.0 GAPI

Background Reading: 0.0 cps
 Calibrator Reading: 1.0 cps

Sensitivity: 1.0000 GAPI/cps

Inclinometer Calibration Report

Performed: Mon Jan 9 07:52:31 2023

	Low Read.	High Read.	Low Ref.	High Ref.	
X Accelerometer	-956.00	943.00	-1.00	1.00	gee
Y Accelerometer	-965.00	910.00	-1.00	1.00	gee
Z Accelerometer	10.11	899.40	0.00	1.00	

Segmented Cement Bond Log Calibration Report

Serial Number: RBT275C_Base
 Tool Model: RADII-275C
 Calibration Casing Diameter: 7.000 in
 Calibration Depth: 299.983 ft

Master Calibration, performed (Derived):

	Raw (v)		Calibrated (mv)		Results	
	Zero	Cal	Zero	Cal	Gain	Offset
3'	0.000	2.028	0.700	81.000	39.605	0.693
CAL	0.005	0.430				
5'	0.000	1.846	0.700	81.000	43.501	0.693
SUM						
S1	0.000	2.052	0.000	100.000	48.748	-0.008
S2	0.000	1.979	0.000	100.000	50.543	-0.008
S3	0.000	2.004	0.000	100.000	49.894	-0.008
S4	0.000	1.980	0.000	100.000	50.521	-0.008
S5	0.000	2.077	0.000	100.000	48.152	-0.008
S6	0.000	2.082	0.000	100.000	48.032	-0.008
S7	0.000	2.099	0.000	100.000	47.650	-0.008
S8	0.000	2.106	0.000	100.000	47.492	-0.008

Internal Reference Calibration, performed (Not Performed):

	Raw (v)		Calibrated (v)		Results	
	Zero	Cal	Zero	Cal	Gain	Offset
CAL	0.000	0.000	0.005	0.430	1.000	0.000

Air Zero Calibration, performed Thu Nov 21 07:51:12 2024:

	Raw (v)		Calibrated (v)		Results	
	Zero		Zero			Offset
3'	0.000		0.000			0.000
5'	0.000		0.000			0.000
SUM						
S1	0.000		0.000			0.000
S2	0.000		0.000			0.000
S3	0.000		0.000			0.000
S4	0.000		0.000			0.000
S5	0.000		0.000			0.000
S6	0.000		0.000			0.000
S7	0.000		0.000			0.000
S8	0.000		0.000			0.000

Inclinometer Calibration Report

Performed: Mon Jan 9 07:52:41 2023

	Low Read.	High Read.	Low Ref.	High Ref.	
X Accelerometer	-918.00	908.00	-1.00	1.00	gee
Y Accelerometer					

	-941.00	887.00	-1.00	1.00	gee
Z Accelerometer	1.35	894.18	0.00	1.00	gee



Company **OCCIDENTAL PETROLEUM**
Well
Field **PALOMBO 23-4L**
County **WELD**
State **COLORADO**