

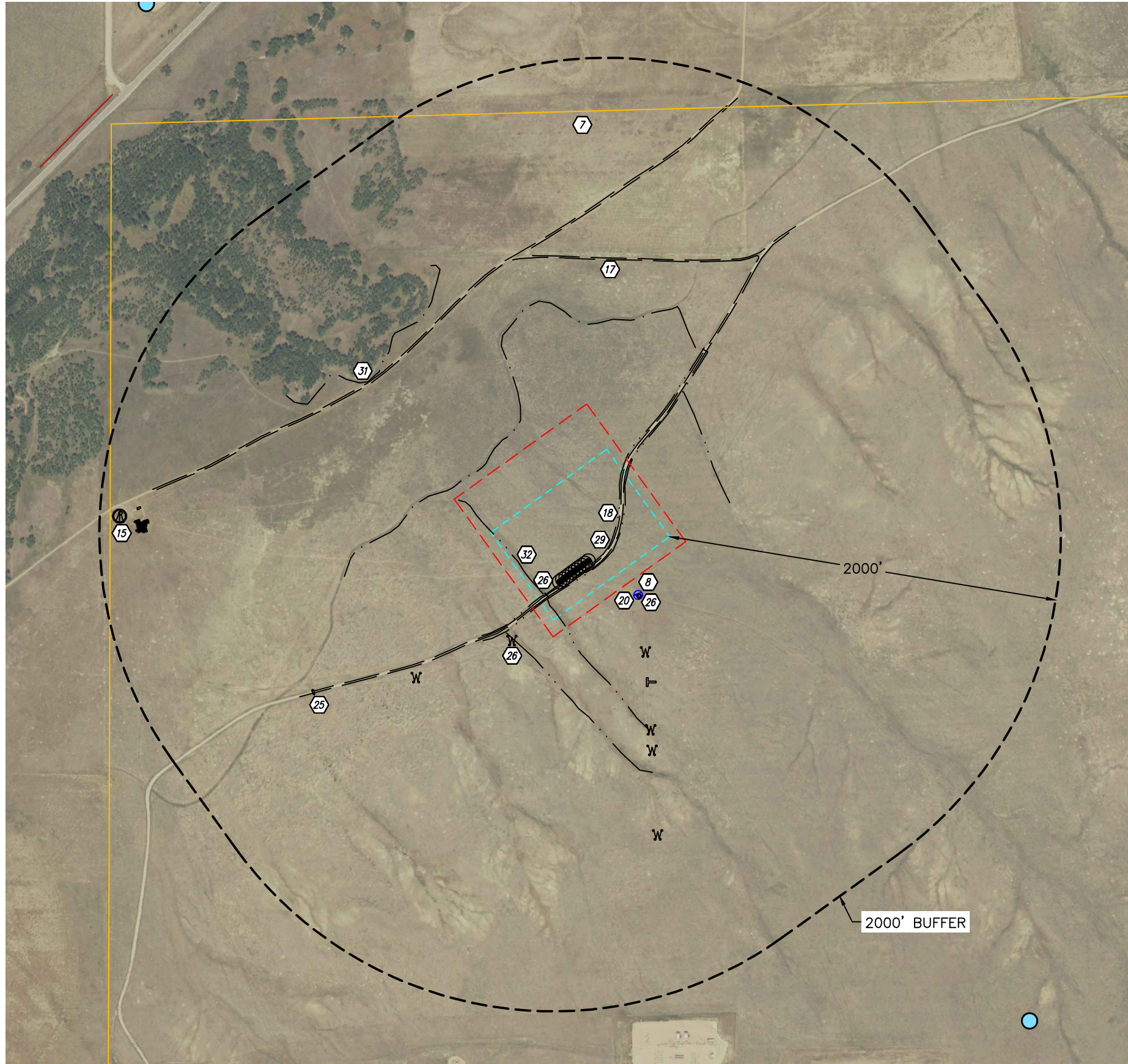


Lat40°, Inc. 6250 W. 10th Street, Unit 2, Greeley, CO 970-515-5294

# LOCATION DRAWING

DORADO 36 PAD  
BISON OIL & GAS IV

Q: SENW  
SECTION: 36  
TOWNSHIP: 7N  
RANGE: 63W  
6TH. P.M.  
WELD COUNTY, CO



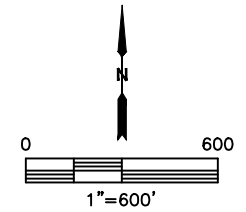
LOCATION DRAWING:  
(MEASURED FROM EDGE OF WORKING PAD SURFACE)

SEE ATTACHED TABLE

	SURFACE PROPERTY		SPIGOT		PRODUCING OIL & GAS WELL
	WORKING PAD SURFACE		WATER MARKER		SHUT IN OIL & GAS WELL
	OIL AND GAS LOCATION		WATER VALVE		TEMPORARY ABANDONED OIL & GAS WELL
	EXISTING WORKING PAD SURFACE		TELEPHONE PEDESTAL		INJECTION WELL
	WATER LINE		TELEPHONE MARKER		PLUGGED AND ABANDONED OIL & GAS WELL
	GAS LINE		FIBER OPTIC MARKER		DRILLED AND ABANDONED OIL & GAS WELL
	TELEPHONE LINE		FIBER OPTIC PEDESTAL		DRILLING OIL & GAS WELL
	UNDERGROUND ELECTRIC		GAS MARKER		WATER WELL (GIS DATA)
	OVERHEAD UTILITY		GAS VALVE		WATER WELL (FIELD LOCATED)
	FIBER OPTIC LINE		ELECTRIC PEDESTAL		WOOD POST
	FENCE		ELECTRIC SERVICE		T-POST
	PROPOSED WELL		POWER POLE		
	ID DESIGNATION		GUY WIRE		
	BUILDING		GATE		
	BUILDING UNIT		SIGN		
	RESIDENTIAL BUILDING UNIT		MONITORING WELL		

DATA SOURCE: COGCC

NOTE:  
1. VISIBLE IMPROVEMENTS SHOWN AND LISTED HEREON THAT ARE LYING OUTSIDE THE SURFACE PROPERTY MAY HAVE BEEN OBTAINED FROM THE AERIAL PHOTO AND OTHER PUBLICLY AVAILABLE DATA. THE ACCURACY AND COMPLETENESS OF SAID IMPROVEMENTS MAY NOT HAVE BEEN VERIFIED BY LAT40, INC. EXISTING CONDITIONS MAY DIFFER FROM WHAT IS SHOWN.





Lat40°, Inc. 6250 W. 10th Street, Unit 2, Greeley, CO 970-515-5294

# LOCATION DRAWING

DORADO 36 PAD  
BISON OIL & GAS IV

Q: SENW  
SECTION: 36  
TOWNSHIP: 7N  
RANGE: 63W  
6TH. P.M.  
WELD COUNTY, CO

ID	IMPROVEMENT	DISTANCES/BEARING (MEASURED FROM WORKING PAD SURFACE)
B	BUILDINGS	NA
BU/RBU	BUILDING UNIT/RESIDENTIAL BUILDING UNITS	NA
1	HIGH OCCUPANCY BUILDING UNITS	NA
2	SCHOOL FACILITY	NA
3	DESIGNATED OUTSIDE ACTIVITY AREA	NA
4	PUBLIC ROAD	NA
5	ABOVE GROUND UTILITY	NA
6	RAILROAD	NA
7	PROPERTY LINE	1730' N, 1946' W
8	FENCES	144' SE, 1792' NW, 1876' NW
9	PIPELINES/PIPELINE MARKERS/FLOWLINE	NA
10	MINES	NA
11	PRODUCING/DRILLING OIL AND GAS WELLS, EXISTING WORKING PAD SURFACE	NA
12	INJECTION WELLS AND FACILITIES	NA
13	PLUGGED/ABANDONED/SHUT IN OIL AND GAS WELLS	NA
14	WATER WELLS - GIS DATA	NA
15	WATER WELLS - SURVEYED LOCATION	1899' NW
16	SEWER/SEPTIC MANHOLES	NA
17	PRIVATE ROAD	969' N, 978' NW
18	EXISTING OIL AND GAS ACCESS	1-INSIDE LOCATION
19	UTILITIES - ELECTRIC	NA
20	UTILITIES - WATER	149' SE
21	UTILITIES - TELEPHONE	NA
22	UTILITIES - FIBER OPTIC	NA
23	UTILITIES - PROPANE TANK	NA
24	UTILITIES - OTHER	NA
25	BRIDGES - CATTLE GUARD	1205' SW
26	MISCELLANEOUS - PIPE	1-INSIDE LOCATION, 709' NE
	MISCELLANEOUS - WATER TANK	146' SE, 1884' NW
	MISCELLANEOUS - POST	234' SW, 408' SE, 535' SE, 742' SW, 746' SE, 836' SE, 1222' SE, 1773' W, 1777' W, 1783' W, 1786' W, 1790' W, 1796' W
27	MAJOR DITCH/CANAL	NA
28	RIVER	NA
29	BORROW DITCH	2-INSIDE LOCATION
30	POND	NA
31	LOW AREA	993' NW
32	DITCH	1-INSIDE LOCATION, 210' SW, 294' NW, 353' NE, 689' NE