

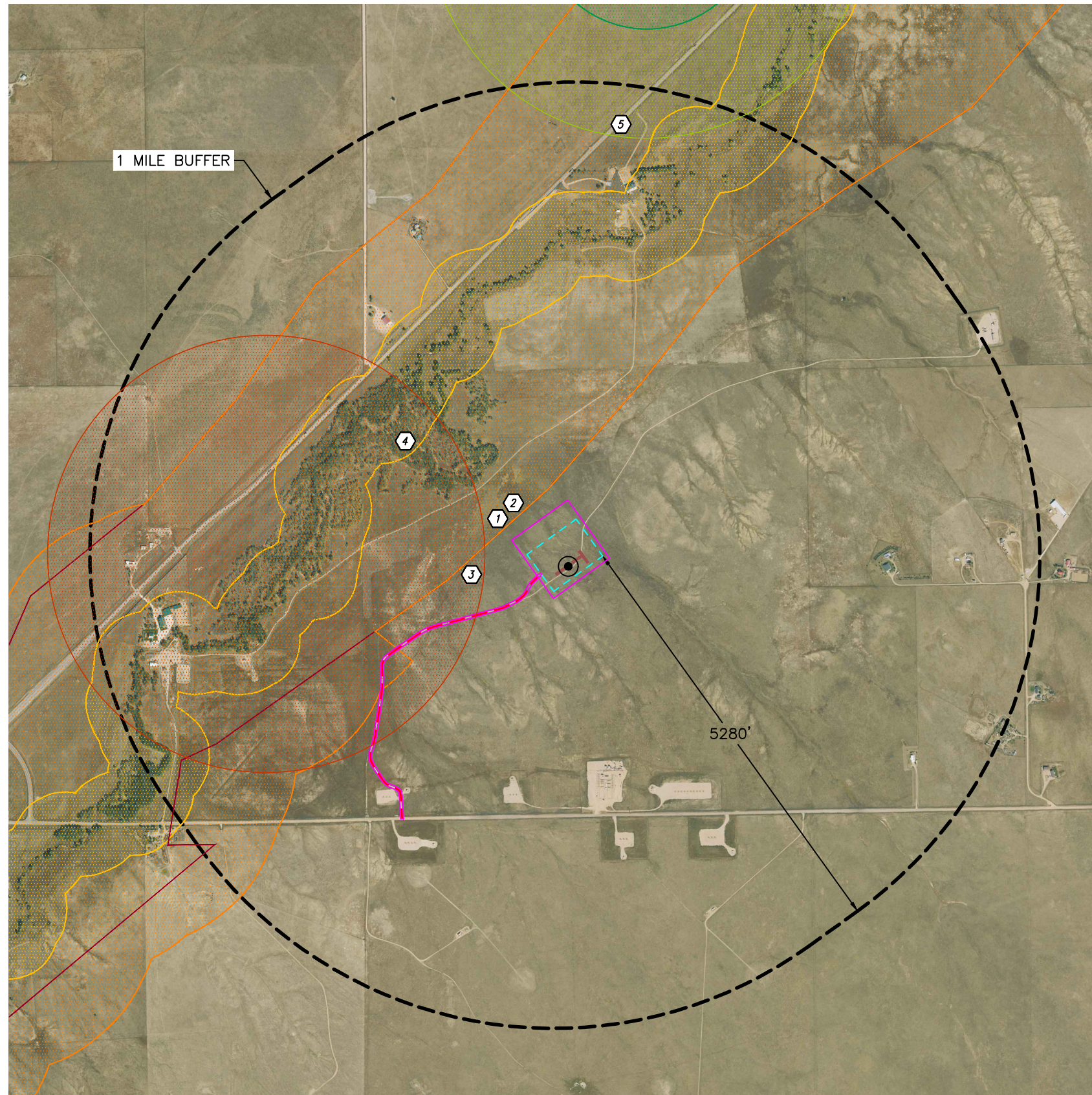


Lat40°, Inc. 6250 W. 10th Street, Unit 2, Greeley, CO 970-515-5294

WILDLIFE HABITAT DRAWING

DORADO 36 PAD
BISON OIL & GAS IV

Q: SENW
SECTION: 36
TOWNSHIP: 7N
RANGE: 63W
6TH. P.M.
WELD COUNTY, CO



WILDLIFE HABITAT:
(MEASURED FROM EDGE OF WORKING PAD SURFACE)

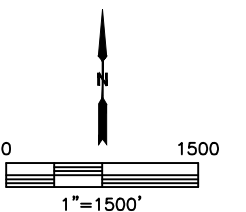
ID	DISTANCE (FT)	DIRECTION	DESCRIPTION
1	415'	NW	MULE DEER SEVERE WINTER RANGE - NO BUFFER
2	415'	NW	MULE DEER WINTER CONCENTRATION AREA - NO BUFFER
3	507'	W	FERRUGINOUS HAWK ACTIVE NEST SITE - 0.5 MILES
4	1850'	NW	AQUATIC NATIVE SPECIES CONSERVATION WATERS - 500 FEET
5	4650'	NE	BALD EAGLE ACTIVE NEST SITE - HALF MILE BUFFER - 0.5 MILES

LEGEND

- PROPOSED REFERENCE POINT
- ID DESIGNATION
- WORKING PAD SURFACE
- AREA OF DISTURBANCE
- MULE DEER SEVERE WINTER RANGE-NO BUFFER
- MULE DEER WINTER CONCENTRATION AREA-NO BUFFER
- FERRUGINOUS HAWK ACTIVE NEST SITE-0.5 MILES
- AQUATIC NATIVE SPECIES CONSERVATION WATERS-500 FEET
- BALD EAGLE ACTIVE NEST SITE-HALF MILE BUFFER-0.5 MILES
- BALD EAGLE ACTIVE NEST SITE-QUARTER MILE BUFFER-0.25 MILES
- ACCESS ROAD
- PROPOSED FLOWLINE CORRIDOR

NOTE:
THIS MAP IS A COMPILATION OF PUBLICLY AVAILABLE DATA. THE ACCURACY AND COMPLETENESS OF SAID DATA HAD NOT BEEN VERIFIED BY LAT40, INC. EXISTING CONDITIONS MAY DIFFER FROM WHAT IS SHOWN.

DATA SOURCE: ECMC, USFWS, ECOS, CPW



DATE: 8/9/2024
PROJECT#: 2023151