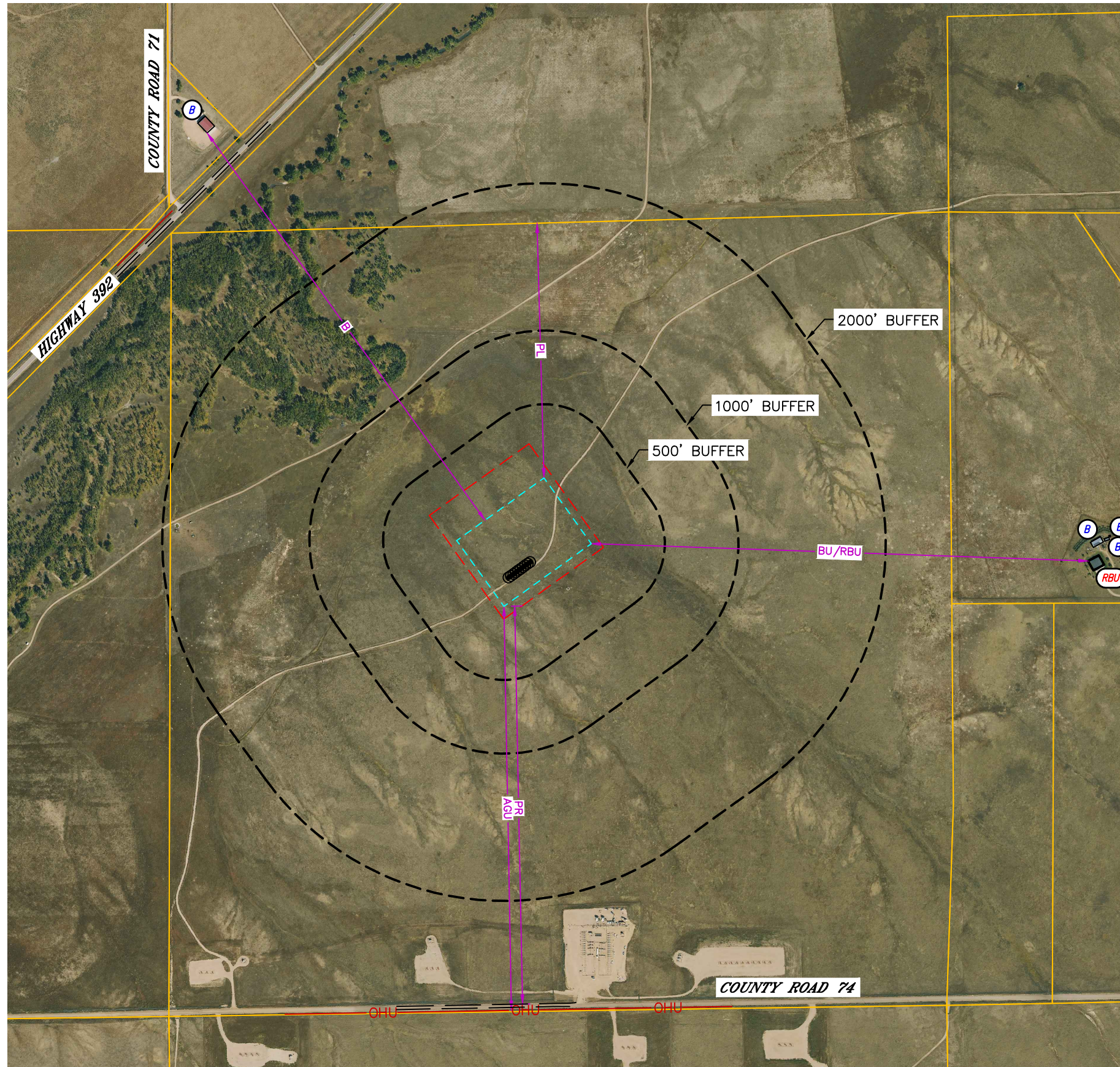


CULTURAL ITEMS MAP

DORADO 36 PAD
BISON OIL & GAS IV

Q: SENW
SECTION: 36
TOWNSHIP: 7N
RANGE: 63W
6TH. P.M.
WELD COUNTY, CO



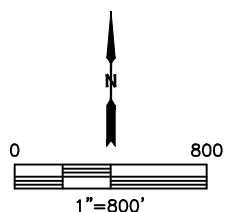
MEASURED FROM THE NEAREST		PROPOSED WELL HEAD	EDGE OF WORKING PAD
B	BUILDING	±3646' NW	±3236' NW
BU	BUILDING UNIT	±3788' E	±3376' E
RBU	RESIDENTIAL BUILDING UNIT	±3788' E	±3376' E
HOBU	HIGH OCCUPANCY BUILDING UNIT	5280'+NE	5280'+NE
S	SCHOOL FACILITY	5280'+NE	5280'+NE
DOAA	DESIGNATED OUTSIDE ACTIVITY AREA	5280'+SW	5280'+SW
DIC	DISPROPORTIONATELY IMPACTED COMMUNITY BOUNDARY	5280'+NW	5280'+NW
DIC/BU/RBU/HOBU/S	BUILDING UNIT/RESIDENTIAL BUILDING UNIT/HIGH OCCUPANCY BUILDING UNIT/ SCHOOL FACILITY WITHIN DISPROPORTIONATELY IMPACTED COMMUNITY BOUNDARY	5280'+NW	5280'+NW
CC	CHILD CARE CENTER	5280'+NE	5280'+NE
PR	PUBLIC ROAD (COUNTY ROAD 74)	±2897' S	±2702' S
AGU	ABOVE GROUND UTILITY	±2938' S	±2743' S
RR	RAILROAD	5280'+SW	5280'+SW
PL	PROPERTY LINE	±2299' N/W	±1730' N

WORKING PAD RADII	0-500 FEET	501-1000 FEET	1001-2000 FEET
BUILDING	0	0	0
BUILDING UNIT	0	0	0
RESIDENTIAL BUILDING UNIT	0	0	0
HIGH OCCUPANCY BUILDING UNIT	0	0	0
SCHOOL PROPERTIES	0	0	0
SCHOOL FACILITIES	0	0	0
DESIGNATED OUTDOOR ACTIVITY AREA	0	0	0

LEGEND

- PARCEL LINE
- WORKING PAD SURFACE
- OIL AND GAS LOCATION
- PROPOSED WELL
- BUILDING
- BUILDING UNIT
- RESIDENTIAL BUILDING UNIT

DATA SOURCE: WELD COUNTY ASSESSOR





Lat40°, Inc. 6250 W. 10th Street, Unit 2, Greeley, CO 970-515-5294

CULTURAL ITEMS MAP

DORADO 36 PAD
BISON OIL & GAS IV

Q: SENW
SECTION: 36
TOWNSHIP: 7N
RANGE: 63W
6TH. P.M.
WELD COUNTY, CO

MEASURED FROM THE NEAREST	DORADO 7-63 36-34-1	DORADO 7-63 36-34-2	DORADO 7-63 36-34-3	DORADO 7-63 36-34-4	DORADO 7-63 36-34-5	DORADO 7-63 36-34-6	DORADO 7-63 36-34-7	DORADO 7-63 36-34-8	DORADO 7-63 36-34-9	DORADO 7-63 36-34-10
BUILDING	±3647' NW	±3647' NW	±3646' NW	±3646' NW	±3646' NW	±3646' NW	±3646' NW	±3647' NW	±3647' NW	±3647' NW
BUILDING UNIT	±3788' E	±3805' E	±3821' E	±3837' E	±3854' E	±3870' E	±3887' E	±3903' E	±3920' E	±3936' E
PUBLIC ROAD (COUNTY ROAD 74)	±2999' S	±2987' S	±2976' S	±2965' S	±2953' S	±2942' S	±2931' S	±2919' S	±2908' S	±2897' S
ABOVE GROUND UTILITY	±3040' S	±3029' S	±3017' S	±3006' S	±2995' S	±2983' S	±2972' S	±2960' S	±2949' S	±2938' S
RAILROAD	5280'+SW	5280'+SW	5280'+SW	5280'+SW	5280'+SW	5280'+SW	5280'+SW	5280'+SW	5280'+SW	5280'+SW
PROPERTY LINE	±2299' N	±2310' N	±2321' N	±2333' N	±2344' N	±2355' N	±2348' W	±2332' W	±2316' W	±2299' W

