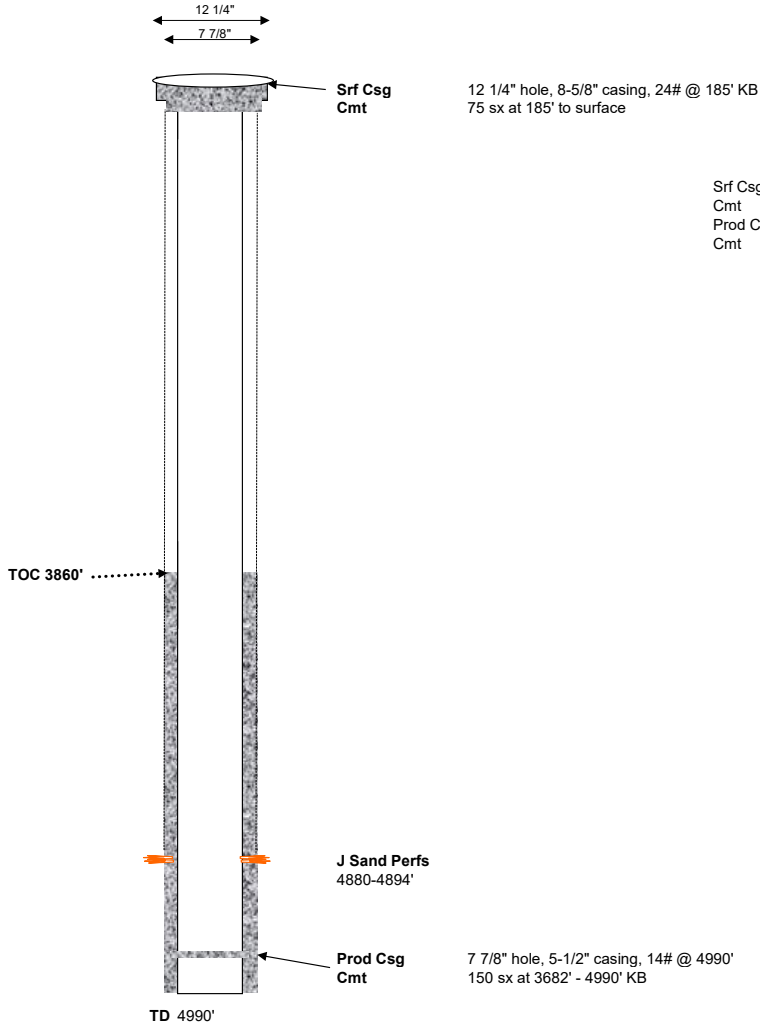


**Western Operating Company**

General Well Info			
Well Name:	Kalsevic Farms #23-17	Field:	Ping
Diagram Date:	1/22/2025	County:	Washington
Srf Location:	NESW 17 2S54W 6	State:	CO
Spud Date:	1/15/1994	API #:	05-121-10517
GL Elev:	4697'		



Srf Csg      12 1/4" hole, 8-5/8" casing, 24# @ 185' KB  
Cmt          75 sx at 185' to surface  
Prod Csg    7 7/8" hole, 5-1/2" casing, 14# @ 4990'  
Cmt          150 sx at 3680' - 4990' KB