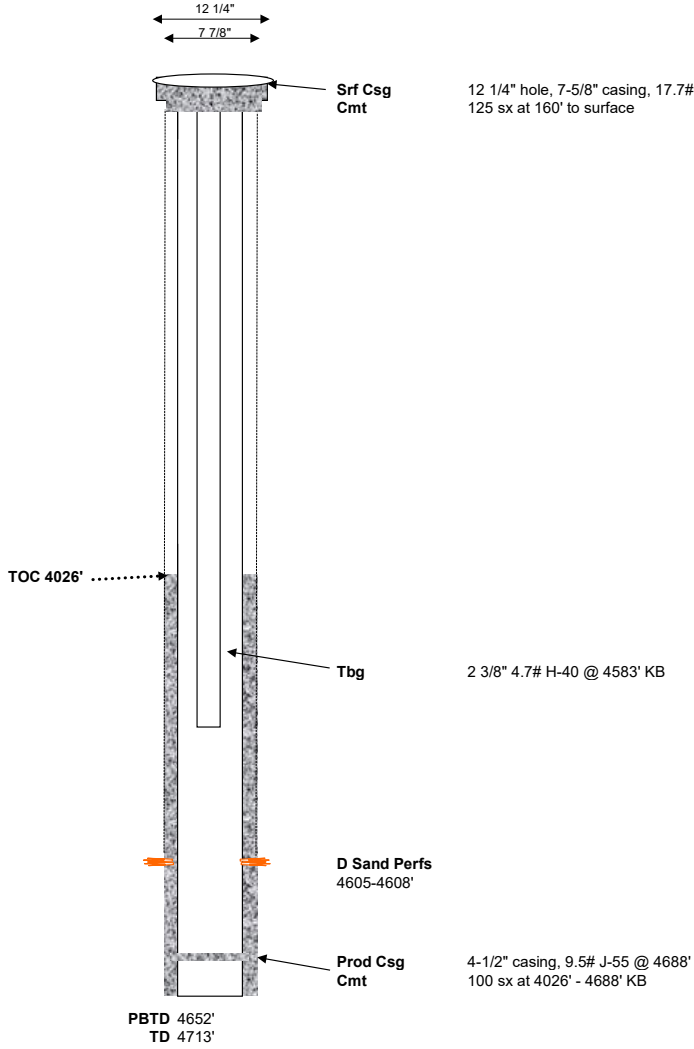


Western Operating Company

General Well Info			
Well Name:	J Kennedy #1	Field:	Surveyor Creek
Diagram Date:	1/20/2025	County:	Washington
Srf Location:	NESW 15 2N52W 6	State:	CO
Spud Date:	8/3/1957	API #:	05-121-06982
GL Elev:	4619'		
Formation Tops			
Zone	Depth	Zone	Depth
Pierre	218'	Graneros	4320'
Niobrara	3680'	Bentonite	4463'
Fort Hays	4092'	D Sand	4551'
Carlile	4150'	J Sand	4639'
Greenhorn	4247'		



Srf Csg 12 1/4" hole, 7-5/8" casing, 17.7# @ 160' KB
 Cmt 125 sx at 160' to surface
 Prod Csg 4-1/2" casing, 9.5# J-55 @ 4688'
 Cmt 100 sx at 4026' - 4688' KB
 Tbg 2 3/8" 4.7# H-40 @ 4583' KB

TOC Calculation		
15# cement	1.51	cuft/sx
slurry density	100	sx
Volume of cement	151	cuft
Piping	4.385	ft/cuft
Cement height	662.135	ft
Casing Set Depth	4688	ft
Calculated TOC	4026	ft