



**Radial Cement Log**  
**Gamma Ray**  
**Collar Correlation Log**

Company OCCIDENTAL PETROLEUM COMPANY  
 Well PINNACLE 2-2  
 Field WATTENBERG  
 County WELD State COLORADO

Location: AP1 #: 05-123-32687  
 NENE  
 SQZ  
 Permanent Datum SEC 2 TWP 1N RGE 68W  
 Log Measured From Kelly Bushing Elevation 4997'  
 Drilling Measured From Kelly Bushing Elevation 4998'  
 G.L. 4982'

Date October 15, 2024

Run Number TWO  
 Depth Driller 8330'  
 Depth Logger 2395'  
 Bottom Logged Interval 3696"  
 Top Log Interval SURFACE  
 Casing Size 4-1/2"  
 Type Fluid WATER  
 Max. Recorded Temp. N/A  
 Estimated Cement Top ----  
 Time Well Ready R.O.A.  
 Time Logger on Bottom 11:50AM  
 Unit Number 200100  
 Tool Size/ID Number 2.75"  
 location STERLING  
 Recorded By MARTIN SALAS  
 Witnessed By TRAVIS ROTHE

Borehole Record		Tubing Record					
Run Number	Bit	From	To	Size	Weight	From	To

Casing Record	Size	Wgt/Ft	Top	Bottom
Surface String	8-5/8"	24#	Surface	926'
Prot. String				
Production String	4-1/2"	11.6#	Surface	8319"
Liner				

<<< Fold Here >>>

All interpretations are opinions based on inferences from electrical or other measurements and we cannot and do not guarantee the accuracy or correctness of any interpretation, and we shall not, except in the case of gross or willful negligence on our part, be liable or responsible for any loss, costs, damages, or expenses incurred or sustained by anyone resulting from any interpretation made by any of our officers, agents or employees. These interpretations are also subject to our general terms and conditions set out in our current Price Schedule.

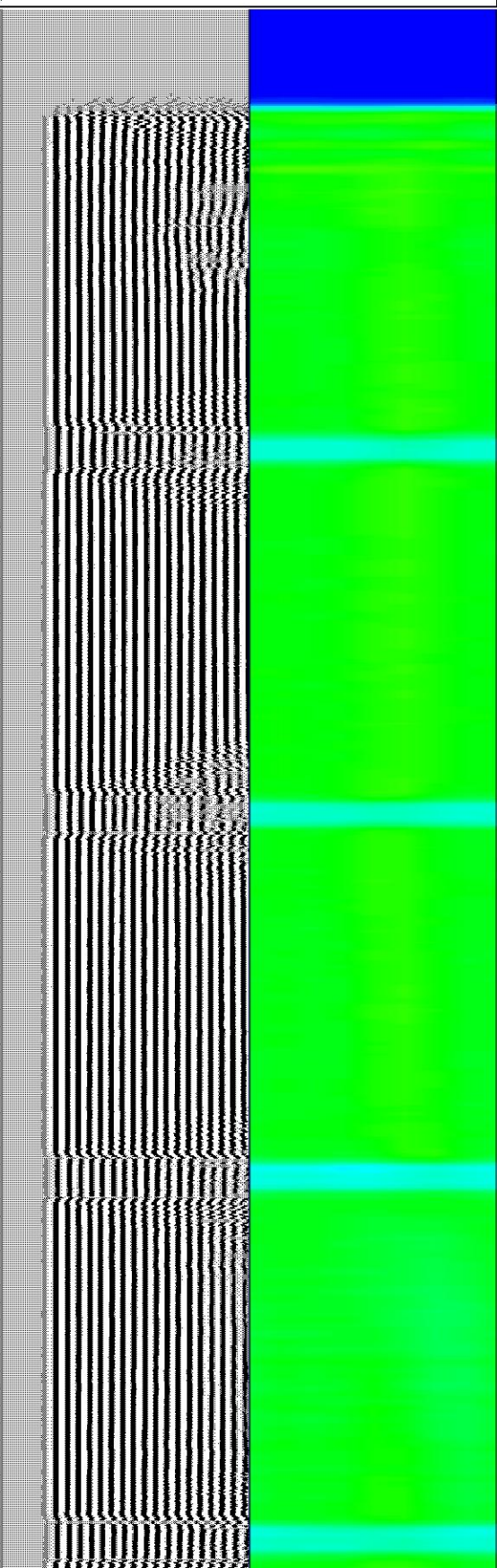
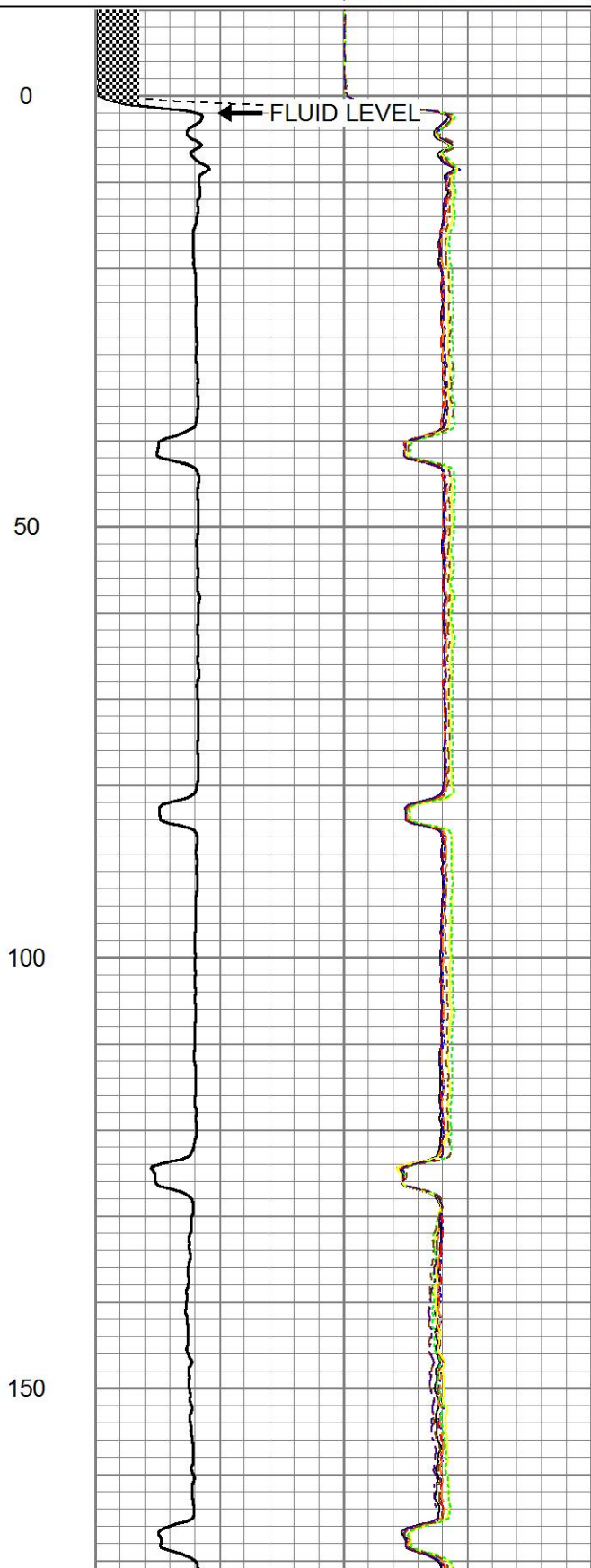
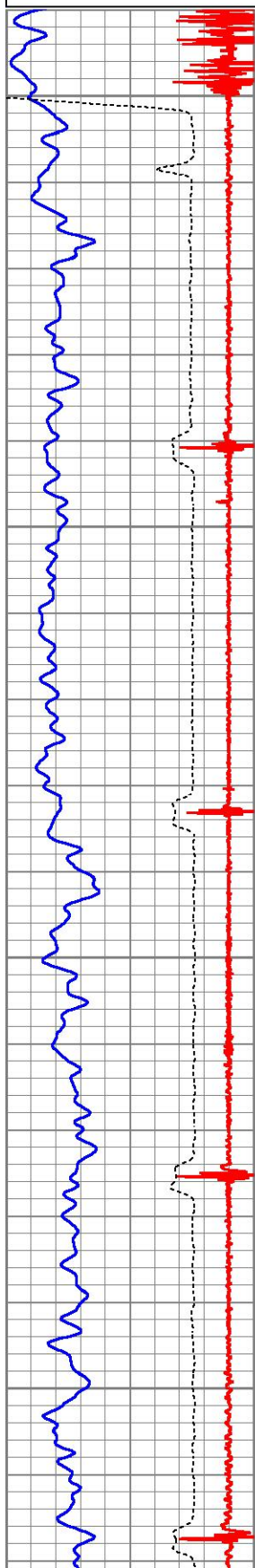
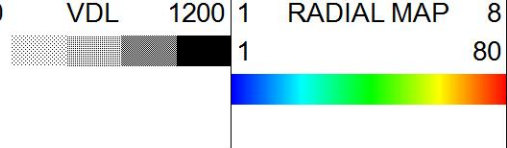
**Comments**

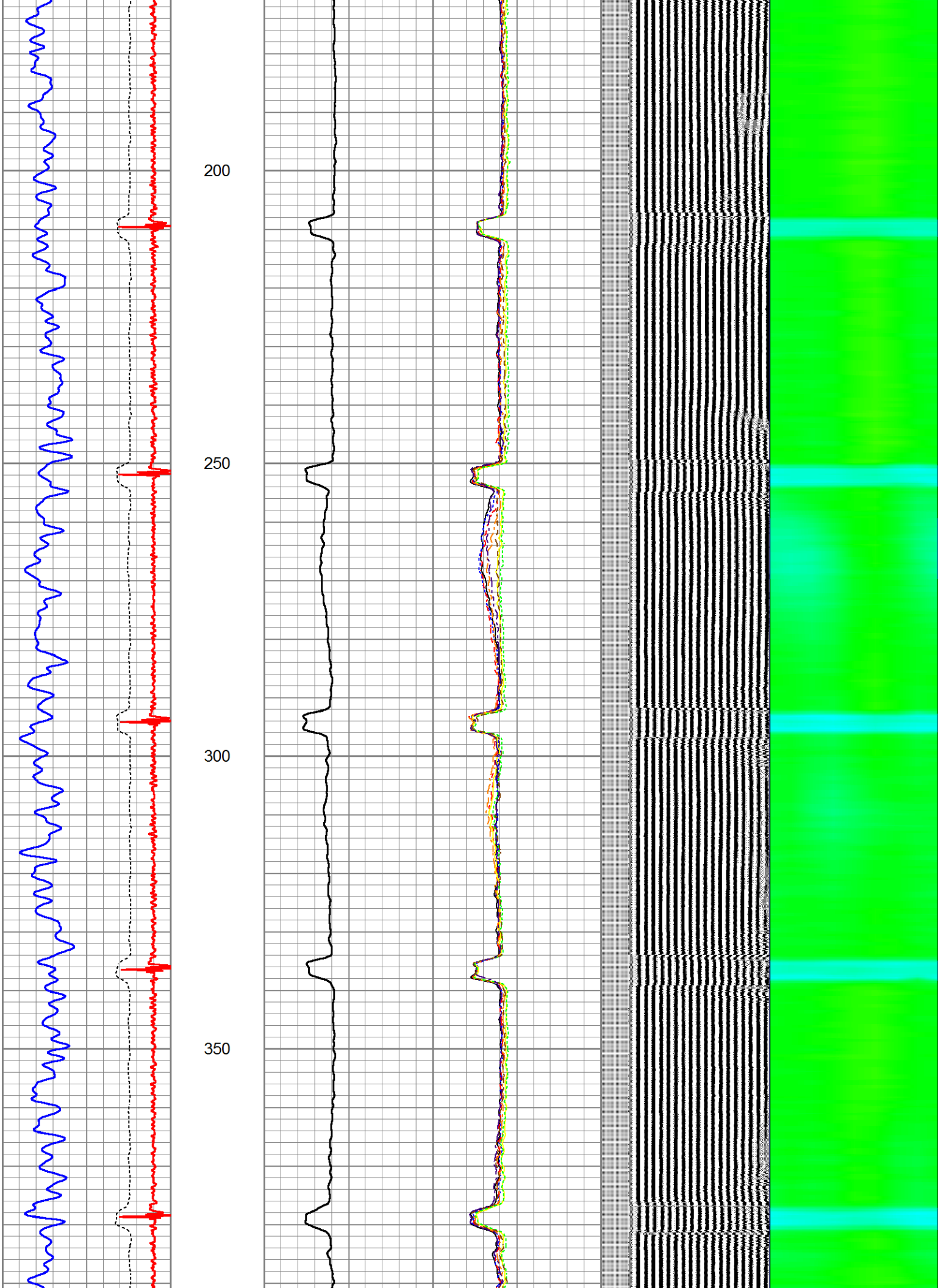
Log Correlated to JW Wireline Log Ran On May 18, 2011  
 Factory Radii Service Used  
 Tool Calibrated at 342'  
 No Free Pipe Found. Used Calibration Mode  
 2500 P.S.I. 2395'-435'. 500PSI 435'-Surface  
 Thank You For Using NextTier Wireline!

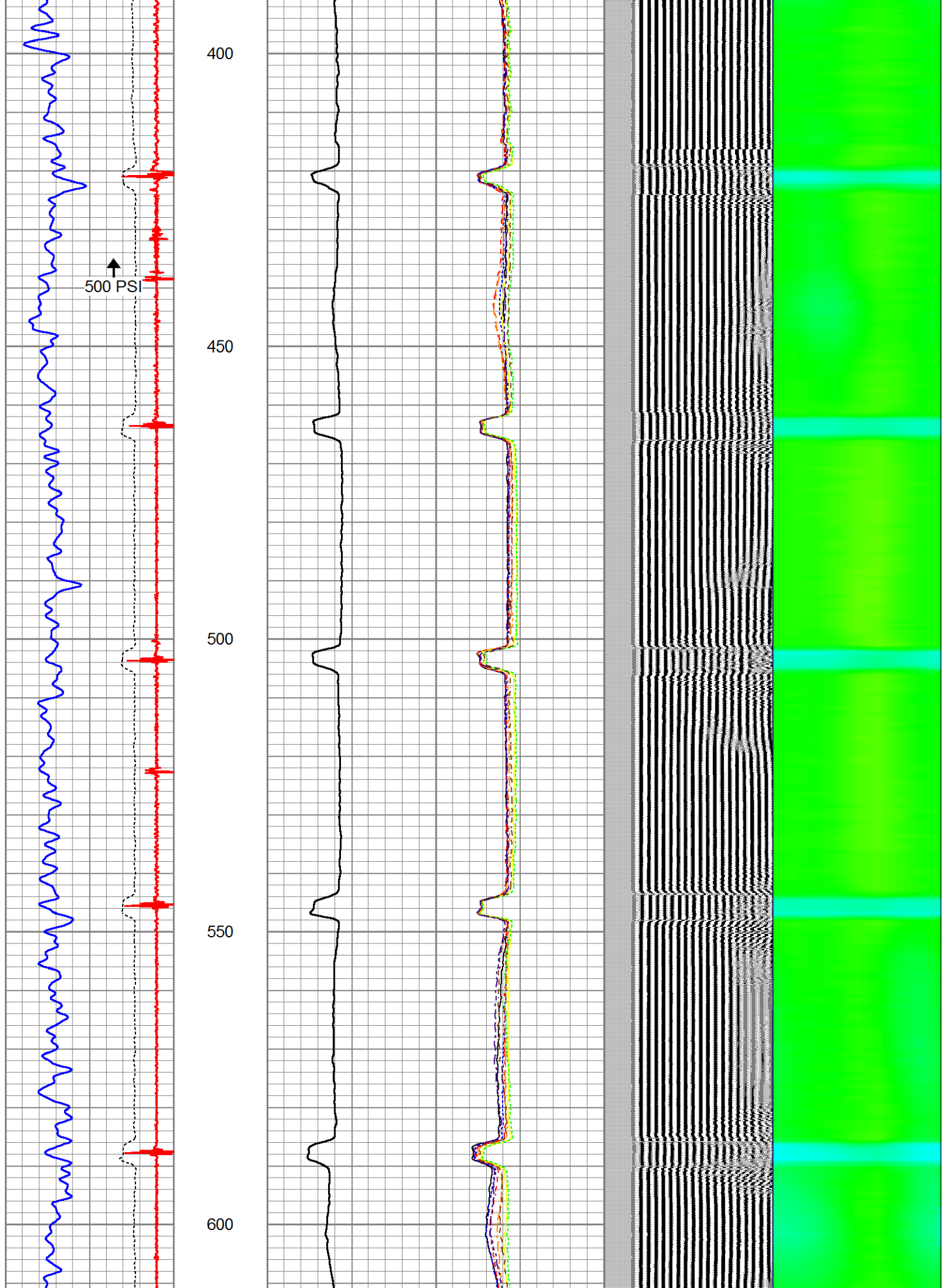
Database File pinnacle 2-2.db  
 Dataset Pathname pass1.29  
 Presentation Format zwag  
 Dataset Creation Tue Oct 15 12:05:47 2024  
 Charted by Depth in Feet scaled 1:240

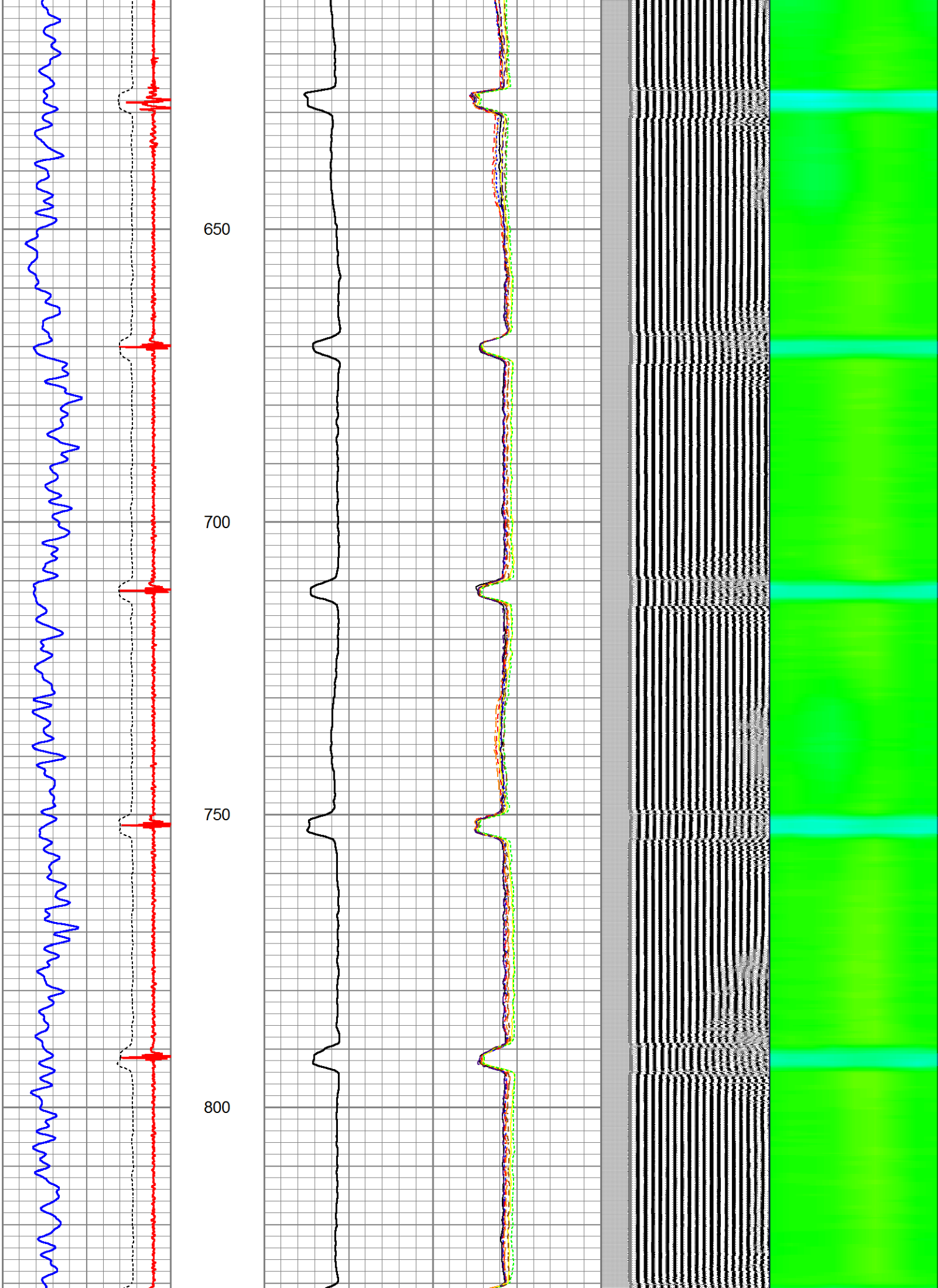
9	CCL	-1
0	GR (GAPI)	150
320	TT3 (usec)	220

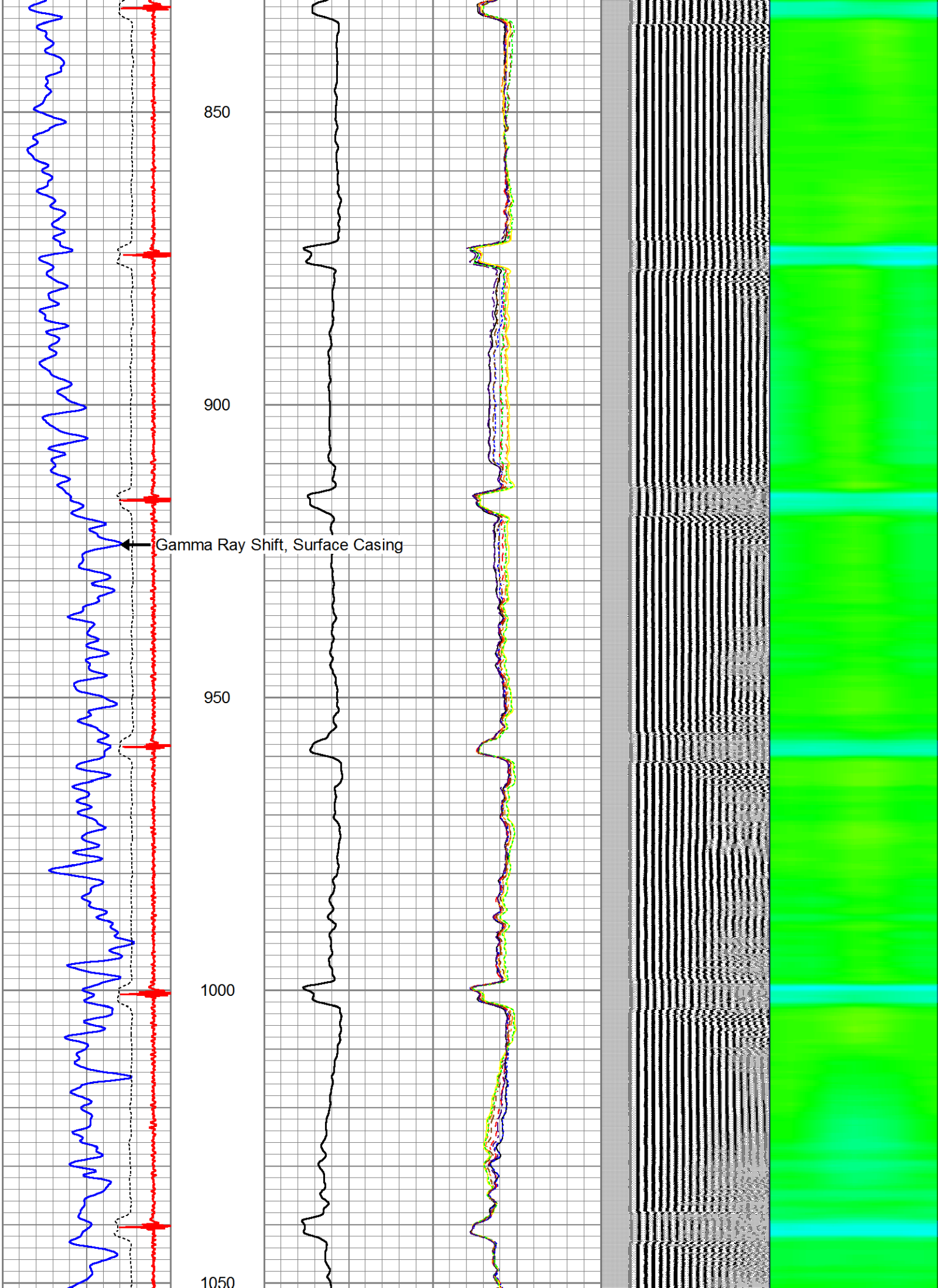
0	AMP (mV)	100	0	AMPS1	100
0	AMPLIFIED AMP3	20	0	AMPS2	100
0	(mV)	20	0	AMPS3	100
0			0	AMPS4	100
0			0	AMPS5	100
0			0	AMPS6	100
0			0	AMPS7	100
0			0	AMPS8	100

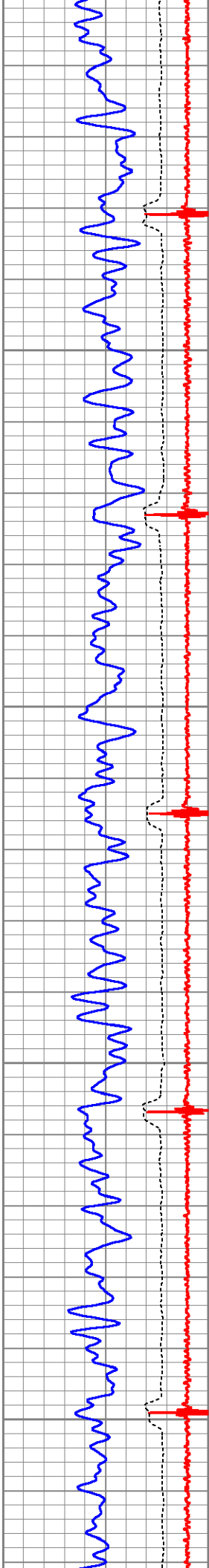










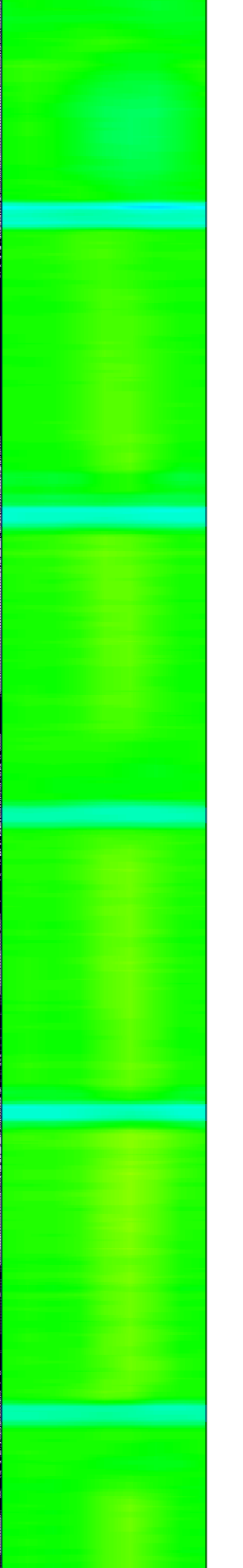
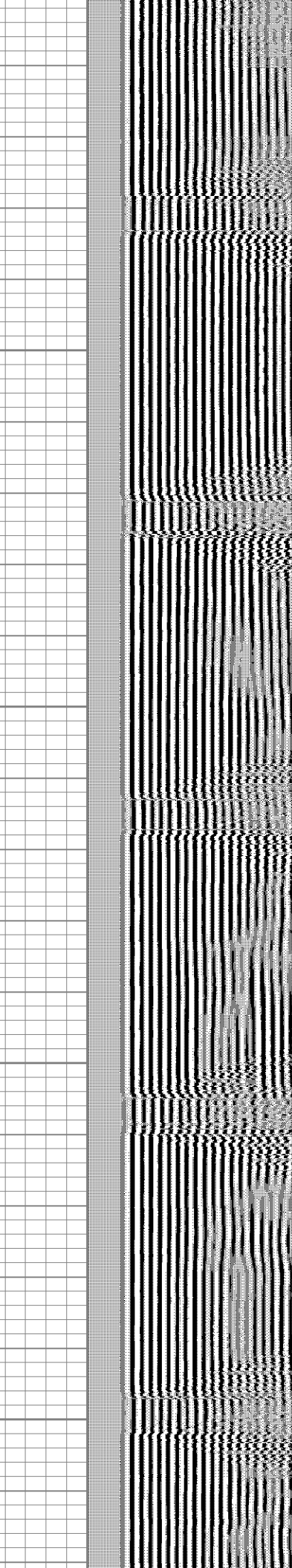
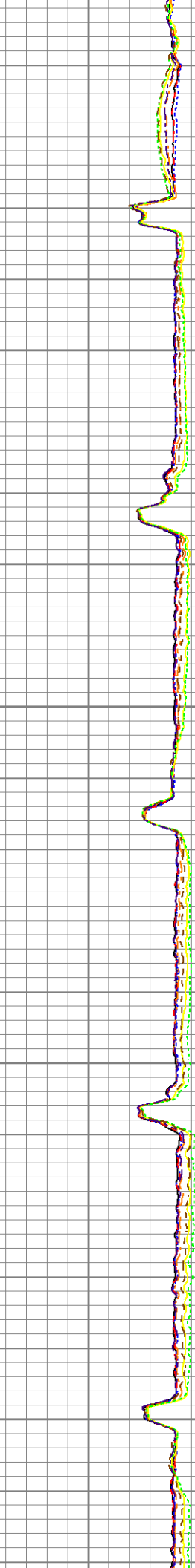
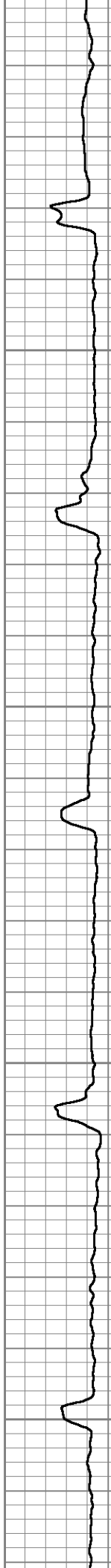


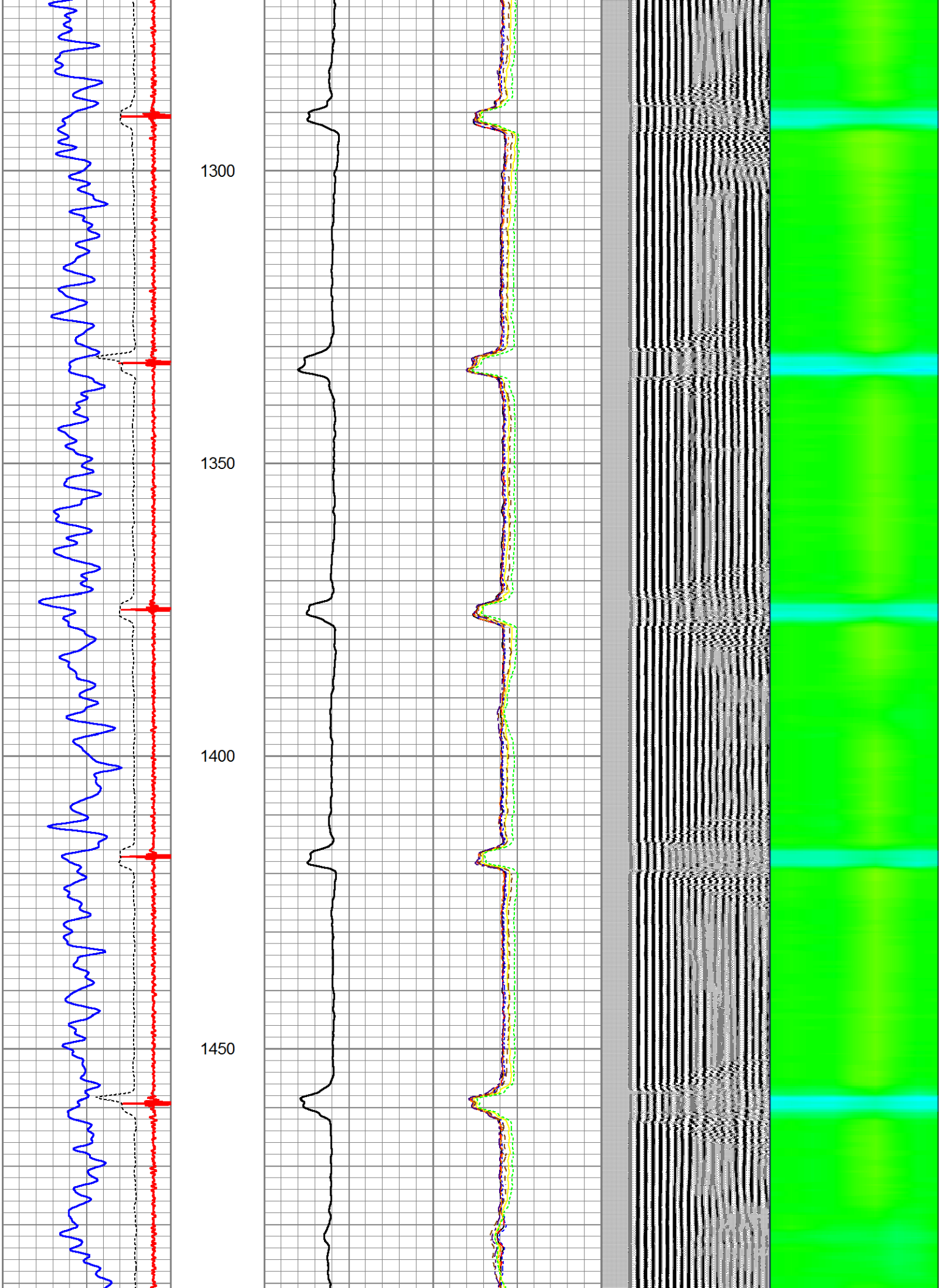
1100

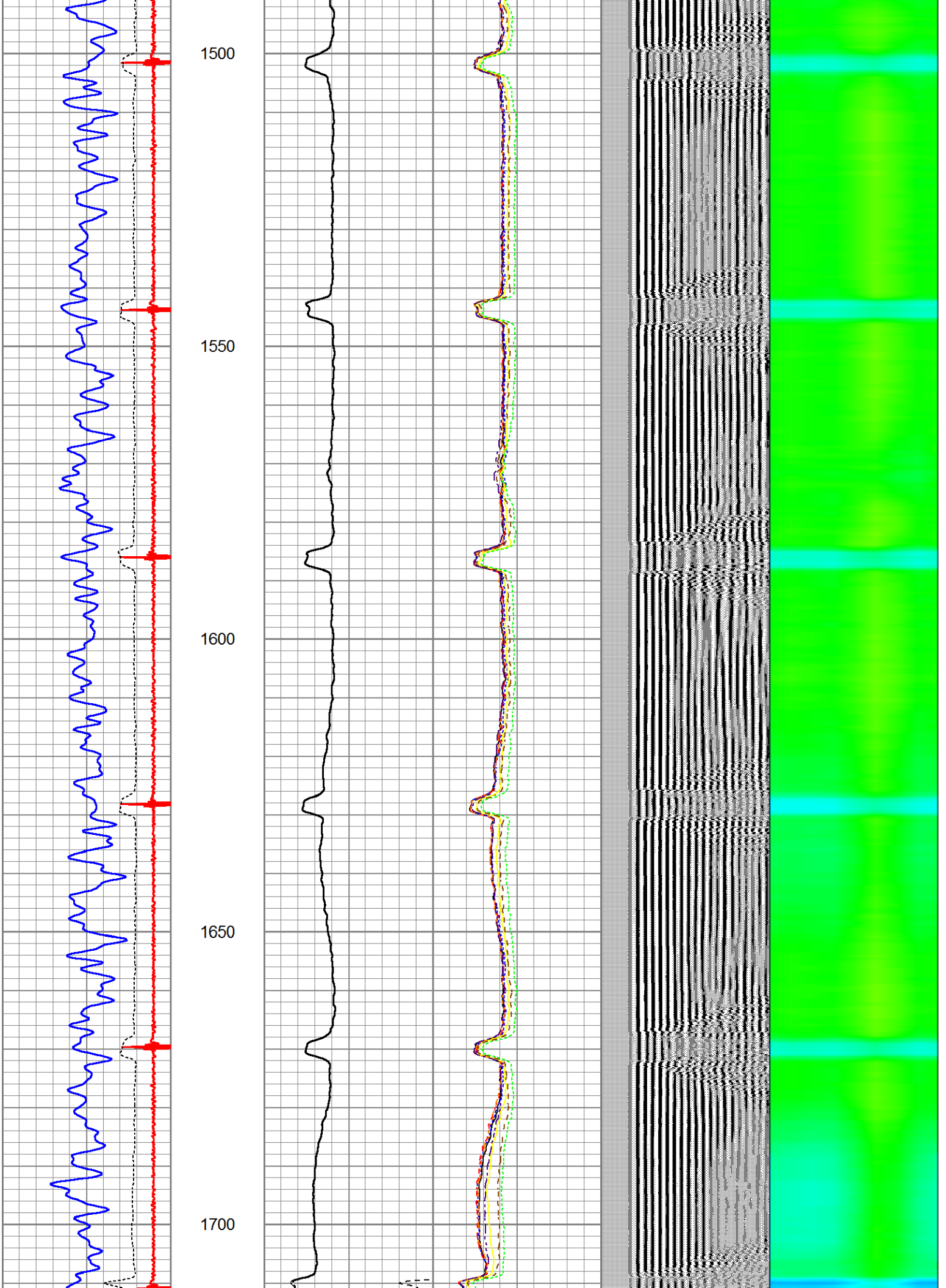
1150

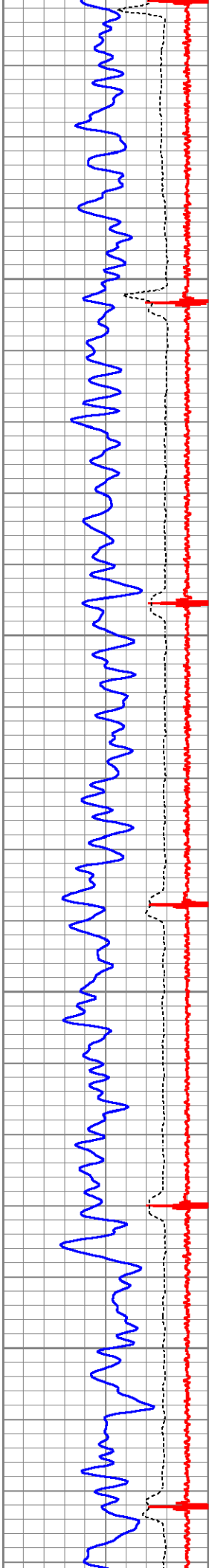
1200

1250







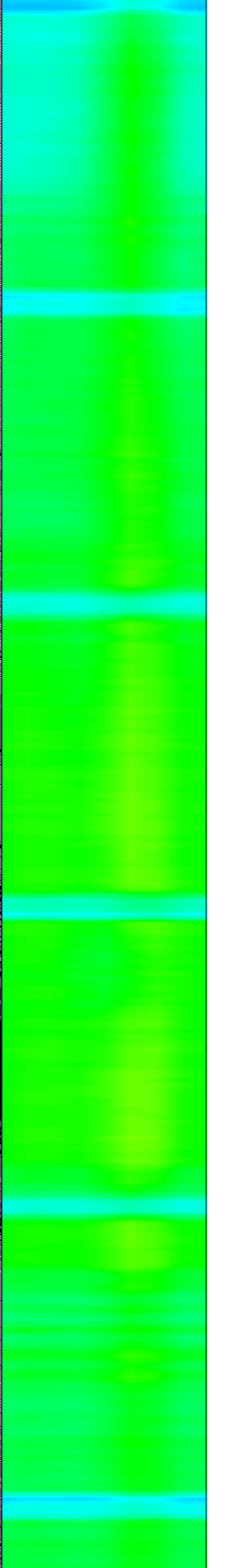
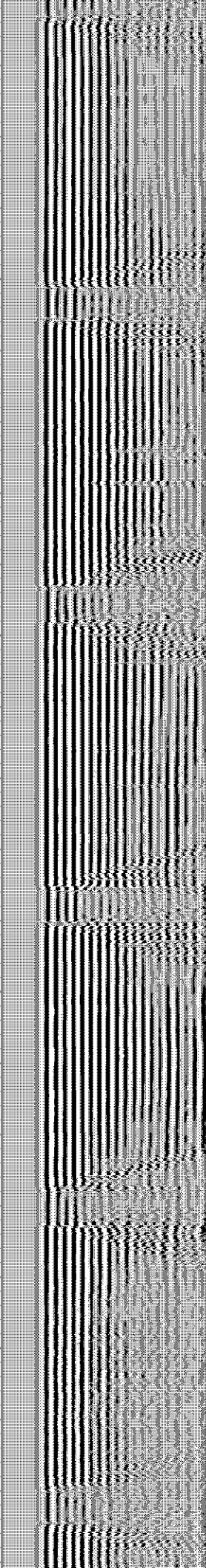
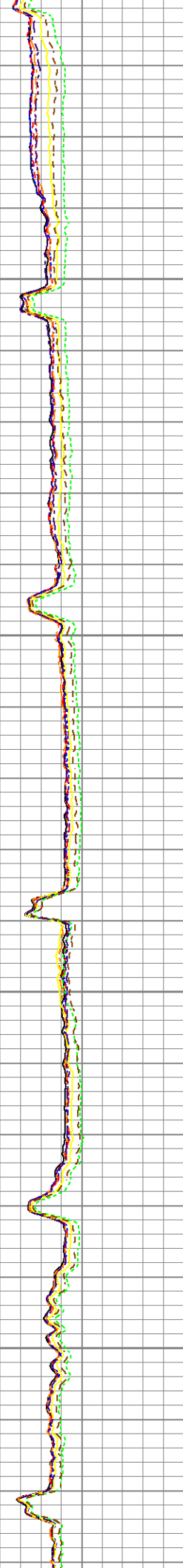
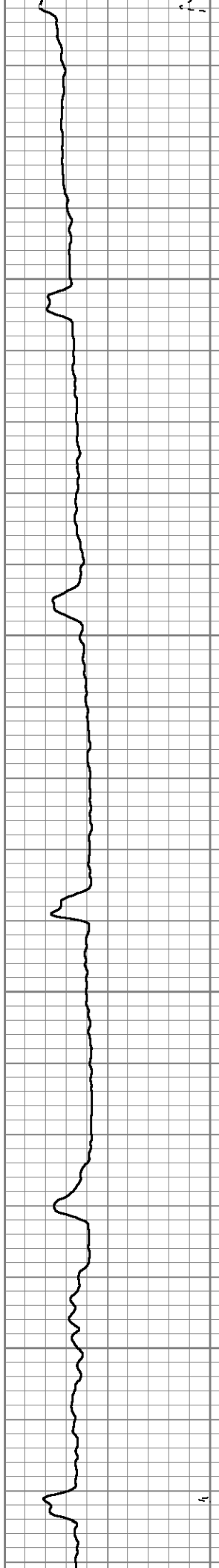


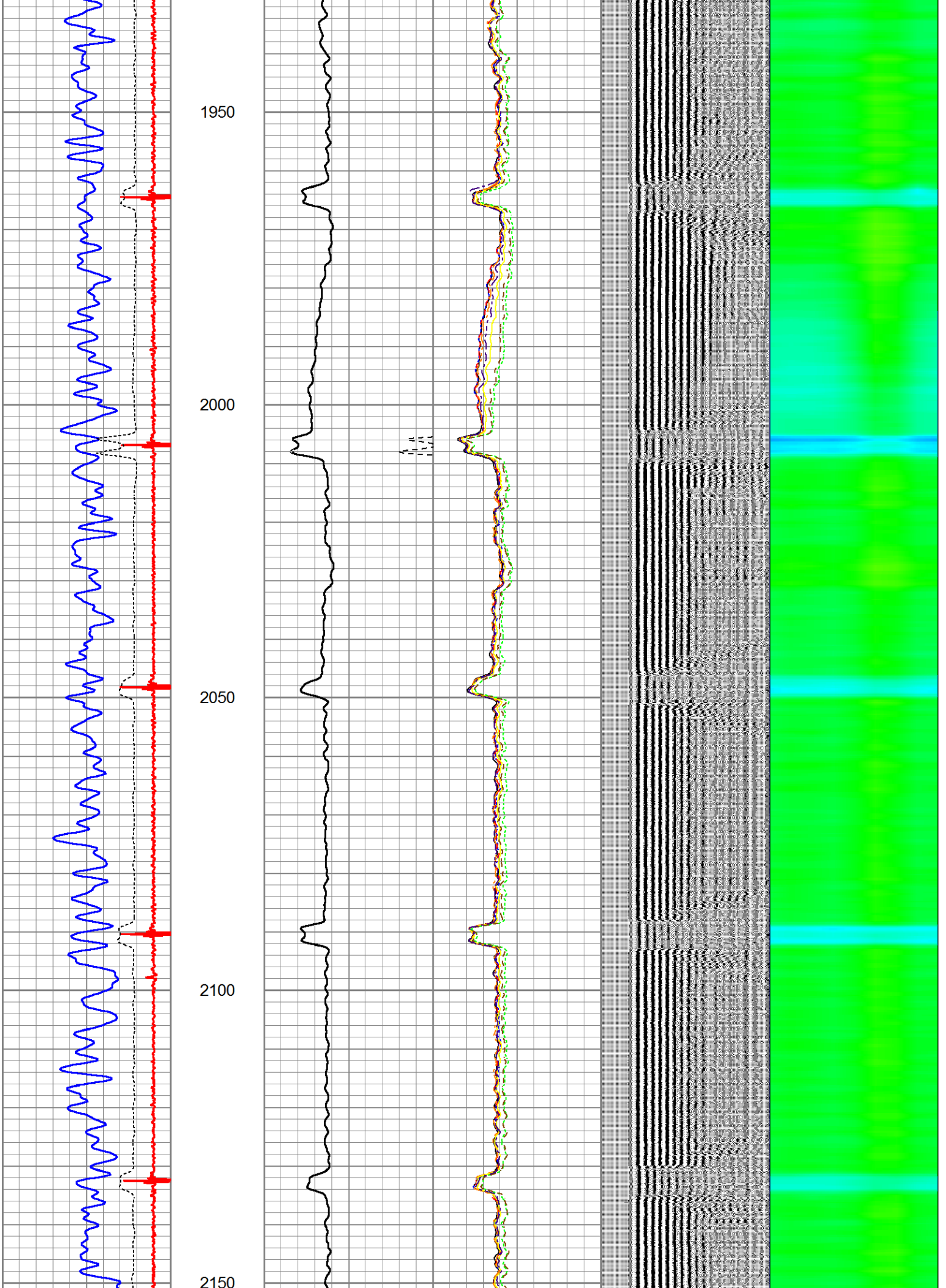
1750

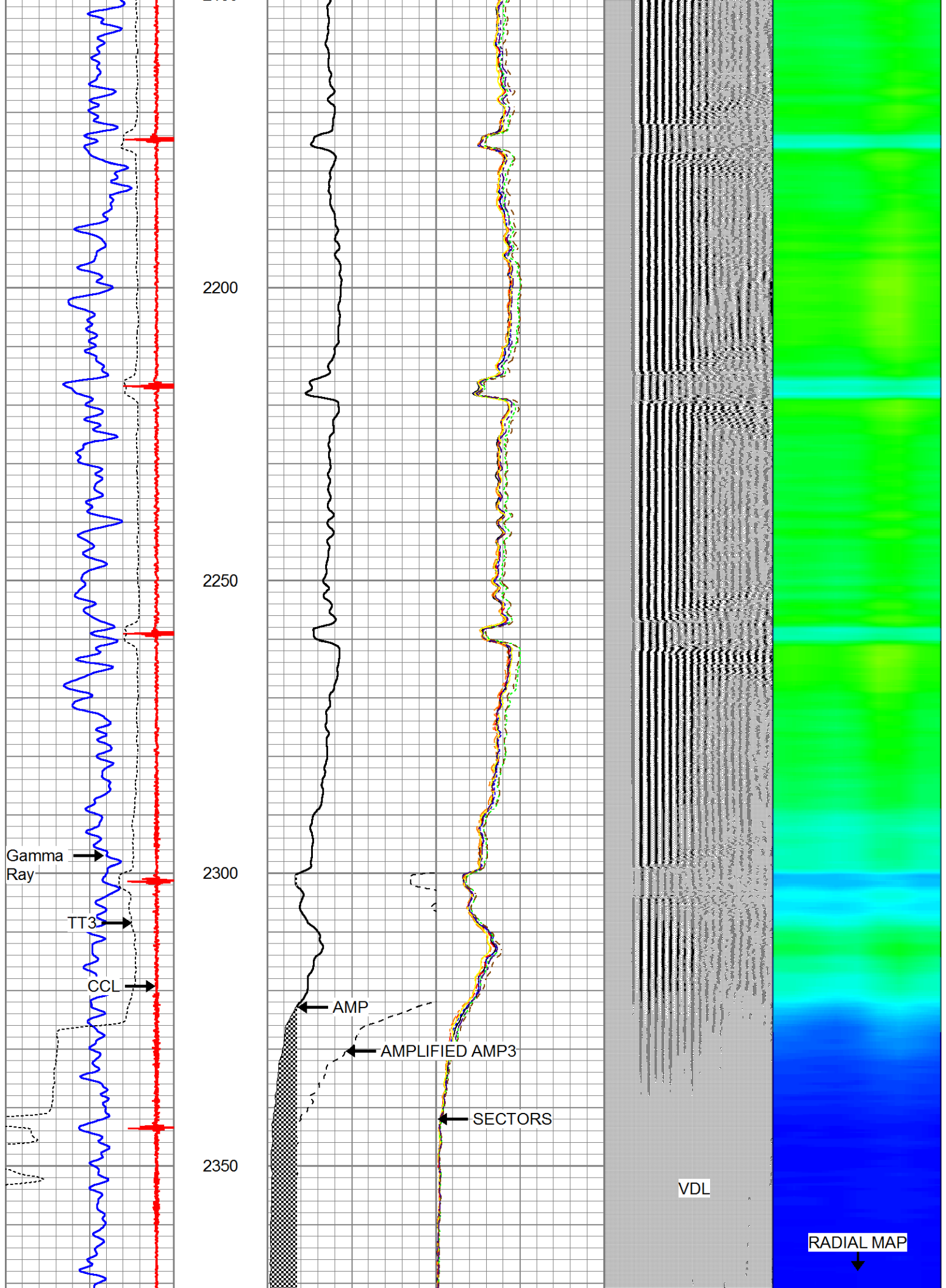
1800

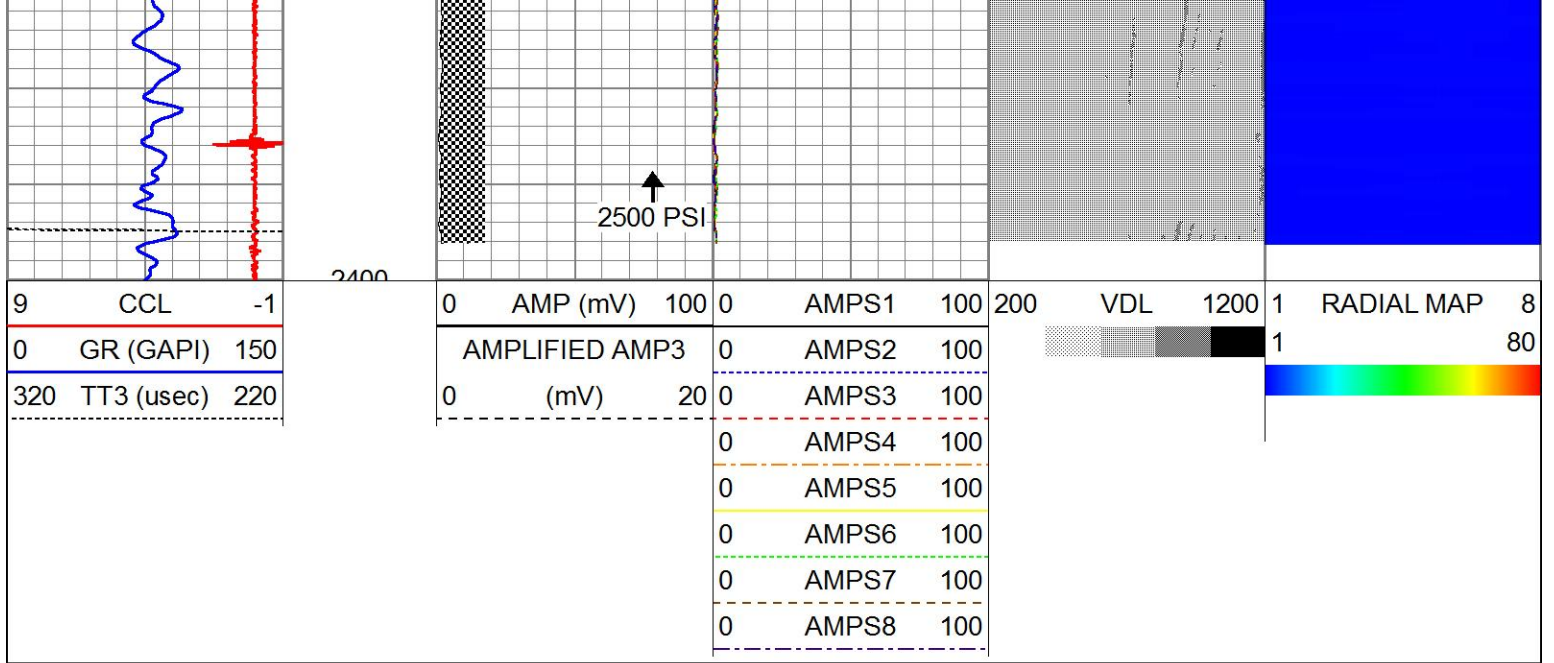
1850

1900

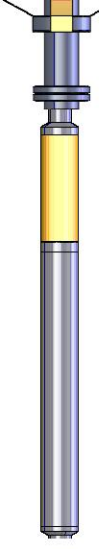








Sensor	Offset (ft)	Schematic	Description	Length (ft)	O.D. (in)	Weight (lb)	
			CHD-STNDRD Standard Cable Head	1.00	1.69	10.00	
			CENT-Probe Probe 2 3/4 Centralizer	2.88	2.75	20.00	
			RBT-Probe (101020) Probe Radii Bond Tool with Digital Telemetry	8.75	2.75	90.00	
WVFS8	11.67						
WVFS7	11.67						
WVFS6	11.67						
WVFS5	11.67						
WVFS4	11.67						
WVFS3	11.67						
WVFS2	11.67						
WVFS1	11.67						
WVFCAL	11.67						
WVF3FT	11.67						
WVF5FT	10.67						
			CENT-Probe Probe 2 3/4 Centralizer	2.88	2.75	20.00	

CCL	3.63				
GR	0.89		GR-Probe275dig (101010) Probe Gamma CCL	4.54	2.75

Dataset: pinnacle 2-2.db: field/well/run1/pass1.29  
 Total length: 20.04 ft  
 Total weight: 197.00 lb  
 O.D.: 2.75 in

### Calibration Report

Database File: pinnacle 2-2.db  
 Dataset Pathname: pass1.29  
 Dataset Creation: Tue Oct 15 12:05:47 2024

### Gamma Ray Calibration Report

Type / Serial: Probe275dig / 101010

#### SHOP CALIBRATION

Wed Feb 27 07:52:48 2013

	Counts/Sec.	Gain	Offset	Jig	Units
Background	0.0				cps
Calibrator	1.0	0.6500			cps GAPI/cps

#### PRIMARY VERIFICATION

Background	0.0				cps
Calibrator	0.0				cps
Difference				0.0	GAPI

#### BEFORE SURVEY VERIFICATION

Background	0.0				cps
Calibrator	0.0				cps
Difference				0.0	GAPI

#### AFTER SURVEY VERIFICATION

Background	0.0				cps
Calibrator	0.0				cps
Difference				0.0	GAPI

### Segmented Cement Bond Log Calibration Report

Serial Number:	101020		
Tool Model:	Probe		
Calibration Casing Diameter:	4.500	in	
Calibration Depth:	342.400	ft	

	Raw (v)		Calibrated (mv)		Results	
	Zero	Cal	Zero	Cal	Gain	Offset
3'	-0.014	0.840	1.000	81.196	93.910	2.270
CAL	-0.014	0.842				
5'	-0.014	0.850	1.000	81.196	92.876	2.256
SUM						
S1	-0.014	0.834	0.000	81.196	95.796	1.296
S2	-0.014	0.835	0.000	81.196	95.677	1.294
S3	-0.013	0.838	0.000	81.196	95.347	1.284
S4	-0.014	0.835	0.000	81.196	95.717	1.304
S5	-0.014	0.829	0.000	81.196	96.372	1.307
S6	-0.013	0.828	0.000	81.196	96.464	1.299
S7	-0.014	0.832	0.000	81.196	96.030	1.298
S8	-0.014	0.838	0.000	81.196	95.321	1.289

Internal Reference Calibration, performed Tue Feb 12 12:45:01 2013:

	Raw (v)		Calibrated (v)		Results	
	Zero	Cal	Zero	Cal	Gain	Offset
CAL	0.000	0.000	-0.014	0.842	1.000	0.000

Air Zero Calibration, performed Thu Feb 21 13:40:31 2013:

	Raw (v)		Calibrated (v)		Results	
	Zero		Zero		Offset	
3'	0.000		0.000			0.000
5'	0.000		0.000			0.000
SUM						
S1	0.000		0.000			0.000
S2	0.000		0.000			0.000
S3	0.000		0.000			0.000
S4	0.000		0.000			0.000
S5	0.000		0.000			0.000
S6	0.000		0.000			0.000
S7	0.000		0.000			0.000
S8	0.000		0.000			0.000